

PARTIES TO APPLICATION

SAGA COMMUNICATIONS OF INDIANA, LLC
(Proposed Assignee)

The sole member of Saga Communications of Indiana, LLC, is Saga Broadcasting, LLC. The sole member of Saga Broadcasting, LLC, is Saga Communications, Inc. The chart following the table provides in graphic form a description of the parties to the application.

Saga Communications of Indiana, LLC

Name and Address	Citizenship	Positional Interest		
			Votes	Equity
Christopher S. Forgy 73 Kercheval Ave. Grosse Pointe Farms, MI 48236	US	President	0	0
Samuel D. Bush 73 Kercheval Ave. Grosse Pointe Farms, MI 48236	US	Treasurer/Vice President	0	0
Katherine Semivan 73 Kercheval Ave. Grosse Pointe Farms, MI 48236	US	Secretary	0	0
Catherine Bobinski 73 Kercheval Ave. Grosse Pointe Farms, MI 48236	US	Vice President	0	0
Saga Broadcasting, LLC 73 Kercheval Avenue Grosse Pointe Farms, MI 48236	Delaware limited liability company	Sole Member	100%	100%

Saga Broadcasting, LLC

Name and Address	Citizenship	Positional Interest		
			Votes	Equity
Christopher S. Forgy 73 Kercheval Ave. Grosse Pointe Farms, MI 48236	US	President	0	0
Samuel D. Bush 73 Kercheval Ave. Grosse Pointe Farms, MI 48236	US	Treasurer/Vice President	0	0

Katherine Semivan 73 Kercheval Ave. Grosse Pointe Farms, MI 48236	US	Secretary	0	0
Catherine Bobinski 73 Kercheval Ave. Grosse Pointe Farms, MI 48236	US	Vice President	0	0
Saga Communications, Inc. 73 Kercheval Avenue Grosse Pointe Farms, MI 48236	Florida Corporation	Sole Member	100%	100%

Saga Communications, Inc.

Name and Address	Citizenship	Positional Interest		
			Votes	Equity
Edward K. Christian Trust, Judith A. Christian and Michael L. Dallaire, Co-Trustees 73 Kercheval Ave. Grosse Pointe Farms, MI 48236	US	Class A stockholder	15.82%	15.82%
TowerView, LLC 460 Park Avenue 20 th Floor New York, NY 10022	US	Class A stockholder	18.96%	18.96%
Christopher S. Forgey 73 Kercheval Ave. Grosse Pointe Farms, MI 48236	US	President/Chief Executive Officer Director	<5%	<5%
Samuel D. Bush 73 Kercheval Ave. Grosse Pointe Farms, MI 48236	US	Senior Vice President/ Treasurer/Chief Financial Officer	<5%	<5%
Marcia K. Lobaito 73 Kercheval Ave. Grosse Pointe Farms, MI 48236	US	Director	<5%	<5%
Catherine Bobinski 73 Kercheval Ave. Grosse Pointe Farms, MI 48236	US	Senior Vice President/Corporate Controller	<5%	<5%
Wayne Leland 73 Kercheval Avenue Grosse Pointe Farms, MI 48236	US	Senior Vice President/Operations	<5%	<5%
Pat McGuigan (aka Pat Paxton) 73 Kercheval Avenue Grosse Pointe Farms, MI 48236	US	Senior Vice President/Content	<5%	<5%
Tom Atkins 73 Kercheval Ave. Grosse Pointe Farms, MI 48236	US	Vice President/ Engineering	<5%	<5%
Angela Parks 73 Kercheval Ave. Grosse Pointe Farms, MI 48236	US	Vice President/ Design and Facilities	<5%	<5%

Eric Christian 73 Kercheval Ave. Grosse Pointe Farms, MI 48236	US	Vice President Digital Strategies	<5%	<5%
Annette Calcaterra 73 Kercheval Ave. Grosse Pointe Farms, MI 48236	US	Vice President Human Resources	<5%	<5%
Tracy Cleeton 73 Kercheval Ave. Grosse Pointe Farms, MI 48236	US	Chief Technology Officer	<5%	<5%
Katherine L. Semivan 73 Kercheval Avenue Grosse Pointe Farms, MI 48236	US	Vice President/Secretary	<5%	<5%
Warren Lada 73 Kercheval Ave. Grosse Pointe Farms, MI 48236	US	Chairman of the Board Director	<5%	<5%
Gary Stevens 3138 Gulfstream Road Gulfstream, FL 33483	US	Director	<5%	<5%
Clarke R. Brown, Jr. 73 Kercheval Ave. Grosse Pointe Farms, MI 48236	US	Director	<5%	<5%
Roy F. Coppedge III 10 Rowes Wharf Boston, MA 02110	US	Director	<5%	<5%
Timothy J. Clarke 1540 Harbor Cay Lane Longboat Key, FL 34228	US	Director	<5%	<5%
Michael W. Schechter 460 Park Avenue, 20 th Floor New York, NY 10022	US	Director	<5%	<5%

Edward K. Christian Trust

Edward K. Christian Trust 3310 Sabal Cove Lane Longboat Key, FL 3428 (Grantor, Co-Trustees and Beneficiary are U. S Citizens)		Class A Stockholder in Saga Communications, Inc.	Votes	Income Beneficiary
Judith A. Christian 3310 Sabal Cove Lane Longboat Key, FL 34228	US	Co-Trustee	50%	100%
Michael L. Dallaire 1200 Roslyn Road Grosse Pointe Woods, MI 48236	US	Co-Trustee	50%	0

TowerView LLC

Name and Address	Citizenship	Positional Interest	Votes	Equity
TowerView LLC 460 Park Avenue 20 th Floor New York, NY 10022	US	Class A stockholder in Saga Communications, Inc.	N/A	N/A
Daniel R. Tisch ¹ 460 Park Avenue 20 th Floor New York, NY 10022	US	Managing Member	100%	73.07%
Andrew H. Tisch 460 Park Avenue 20 th Floor New York, NY 10022	US	Member	0%	3.23%
Thomas J. Tisch 460 Park Avenue 20 th Floor New York, NY 10022	US	Member	0%	4.07%
Alan R. Tisch 2003 Trust – 2021 460 Park Avenue 20 th Floor New York, NY 10022	US	Member	0%	2.61%
Michael J. Tisch 2003 Trust 2021 460 Park Avenue 20 th Floor New York, NY 10022	US	Member	0%	2.61%
ELK Partners 460 Park Avenue 20 th Floor New York, NY 10022	US	Member	0%	12.58%

¹ Pursuant to the Limited Liability Company Agreement for TowerView, LLC (the “Company”), the Managing Member, Daniel R. Tisch, is vested with the power to take all actions on behalf of the Company. Other Members of the Company have no voting power with respect to the day-to-day operations of the Company, except for the limited right to appoint a successor Managing Member in the event that Daniel R. Tisch shall cease to act as the Managing Member. However, such voting rights are specifically based on the Member’s relative capital account balance; thus, as a practical matter any successor-in-interest to Daniel R. Tisch will continue to exercise full voting power.

Alan R. Tisch 2003 Trust – 2021²

Name and Address	Citizenship	Positional Interest	Votes	Equity
Alan R. Tisch 2003 Trust – 2021 460 Park Avenue 20 th Floor New York, NY 10022	US	Member of TowerView, LLC	N/A	N/A
Daniel R. Tisch 460 Park Avenue 20 th Floor New York, NY 10022	US	Managing Trustee	100%	0%

Michael J. Tisch 2003 Trust – 2021

Name and Address	Citizenship	Positional Interest	Votes	Equity
Michael J. Tisch 2003 Trust – 2021 460 Park Avenue 20 th Floor New York, NY 10022	US	Member of TowerView, LLC	N/A	N/A
Daniel R. Tisch 460 Park Avenue 20 th Floor New York, NY 10022	US	Managing Trustee	100%	0%

ELK Partners

Name and Address	Citizenship	Positional Interest	Votes	Equity
ELK Partners 460 Park Avenue 20 th Floor New York, NY 10022	US	Member of TowerView, LLC	N/A	N/A

² The trustees, beneficiaries, and grantors under all of the trusts listed herein are United States citizens.

Daniel R. Tisch 460 Park Avenue 20 th Floor New York, NY 10022	US	Manager	33.3% ³	0%
Andrew H. Tisch 460 Park Avenue 20 th Floor New York, NY 10022	US	Manager	33.3%	0%
James S. Tisch 460 Park Avenue 20 th Floor New York, NY 10022	US	Manager	33.3%	0%
KAL Family Partnership 460 Park Avenue 20 th Floor New York, NY 10022	US	Partner	0%	25%
DMA Family Partnership 460 Park Avenue 20 th Floor New York, NY 10022	US	Partner	0%	37.5%
JT Family Partnership 460 Park Avenue 20 th Floor New York, NY 10022	US	Partner	0%	37.5%

KAL Family Partnership

Name and Address	Citizenship	Positional Interest	Votes	Equity
KAL Family Partnership 460 Park Avenue 20 th Floor New York, NY 10022	US	Partner in ELK Partners	N/A	N/A
Andrew H. Tisch 460 Park Avenue 20 th Floor New York, NY 10022	US	Manager	100%	0%

³ As a practical matter, any Manager of ELK Partners can make decisions on behalf of ELK Partners.

Alexander H. Tisch 1989 Trust 460 Park Avenue 20 th Floor New York, NY 10022	US	Partner	0%	50%
Lacey A. Tisch 1989 Trust 460 Park Avenue 20 th Floor New York, NY 10022	US	Partner	0%	50%

DMA Family Partnership

Name and Address	Citizenship	Positional Interest	Votes	Equity
DMA Family Partnership 460 Park Avenue 20 th Floor New York, NY 10022	US	Partner in ELK Partners	N/A	N/A
Daniel R. Tisch 460 Park Avenue 20 th Floor New York, NY 10022	US	Manager	100%	0%
David L. Tisch 1989 Trust 460 Park Avenue 20 th Floor New York, NY 10022	US	Partner	0%	33.3%
Michael J. Tisch 1989 Trust 460 Park Avenue 20 th Floor New York, NY 10022	US	Partner	0%	33.3%
Alan R. Tisch 1989 Trust 460 Park Avenue 20 th Floor New York, NY 10022	US	Partner	0%	33.3%

JT Family Partnership

Name and Address	Citizenship	Positional Interest	Votes	Equity
JT Family Partnership 460 Park Avenue 20 th Floor New York, NY 10022	US	Partner in ELK Partners	N/A	N/A
James S. Tisch 460 Park Avenue 20 th Floor New York, NY 10022	US	Manager	100%	0%
Jessica S. Tisch 1989 Trust 460 Park Avenue 20 th Floor New York, NY 10022	US	Partner	0%	33.3%
Benjamin J. Tisch 1989 Trust 460 Park Avenue 20 th Floor New York, NY 10022	US	Partner	0%	33.3%
Samuel A. Tisch 1989 Trust 460 Park Avenue 20 th Floor New York, NY 10022	US	Partner	0%	33.3%

Alexander H. Tisch 1989 Trust

Name and Address	Citizenship	Positional Interest	Votes	Equity
Alexander H. Tisch 1989 Trust 460 Park Avenue 20 th Floor New York, NY 10022	US	Partner in KAL Family Partnership	N/A	N/A
Andrew H. Tisch 460 Park Avenue 20 th Floor New York, NY 10022	US	Co-trustee	33.3%	0%

Daniel R. Tisch 460 Park Avenue 20 th Floor New York, NY 10022	US	Co-trustee	33.3%	0%
James S. Tisch 460 Park Avenue 20 th Floor New York, NY 10022	US	Co-trustee	33.3%	0%

Lacey A. Tisch 1989 Trust

Name and Address	Citizenship	Positional Interest	Votes	Equity
Lacey A. Tisch 1989 Trust 460 Park Avenue 20 th Floor New York, NY 10022	US	Partner in KAL Family Partnership	N/A	N/A
Andrew H. Tisch 460 Park Avenue 20 th Floor New York, NY 10022	US	Co-trustee	33.3%	0%
Daniel R. Tisch 460 Park Avenue 20 th Floor New York, NY 10022	US	Co-trustee	33.3%	0%
James S. Tisch 460 Park Avenue 20 th Floor New York, NY 10022	US	Co-trustee	33.3%	0%

David L. Tisch 1989 Trust

Name and Address	Citizenship	Positional Interest	Votes	Equity
David L. Tisch 1989 Trust 460 Park Avenue 20 th Floor New York, NY 10022	US	Partner in DMA Family Partnership	N/A	N/A

Daniel R. Tisch 460 Park Avenue 20 th Floor New York, NY 10022	US	Co-trustee	33.3%	0%
Andrew H. Tisch 460 Park Avenue 20 th Floor New York, NY 10022	US	Co-trustee	33.3%	0%
James S. Tisch 460 Park Avenue 20 th Floor New York, NY 10022	US	Co-trustee	33.3%	0%

Michael J. Tisch 1989 Trust

Name and Address	Citizenship	Positional Interest	Votes	Equity
Michael J. Tisch 1989 Trust 460 Park Avenue 20 th Floor New York, NY 10022	US	Partner in DMA Family Partnership	N/A	N/A
Daniel R. Tisch 460 Park Avenue 20 th Floor New York, NY 10022	US	Co-trustee	33.3%	0%
Andrew H. Tisch 460 Park Avenue 20 th Floor New York, NY 10022	US	Co-trustee	33.3%	0%
James S. Tisch 460 Park Avenue 20 th Floor New York, NY 10022	US	Co-trustee	33.3%	0%

Alan R. Tisch 1989 Trust

Name and Address	Citizenship	Positional Interest	Votes	Equity
Alan R. Tisch 1989 Trust 460 Park Avenue 20 th Floor New York, NY 10022	US	Partner in DMA Family Partnership	N/A	N/A
Daniel R. Tisch 460 Park Avenue 20 th Floor New York, NY 10022	US	Co-trustee	33.3%	0%
Andrew H. Tisch 460 Park Avenue 20 th Floor New York, NY 10022	US	Co-trustee	33.3%	0%
James S. Tisch 460 Park Avenue 20 th Floor New York, NY 10022	US	Co-trustee	33.3%	0%

Jessica S. Tisch 1989 Trust

Name and Address	Citizenship	Positional Interest	Votes	Equity
Jessica S. Tisch 1989 Trust 460 Park Avenue 20 th Floor New York, NY 10022	US	Partner in JT Family Partnership	N/A	N/A
James S. Tisch 460 Park Avenue 20 th Floor New York, NY 10022	US	Co-trustee	33.3%	0%
Daniel R. Tisch 460 Park Avenue 20 th Floor New York, NY 10022	US	Co-trustee	33.3%	0%
Andrew H. Tisch 460 Park Avenue 20 th Floor New York, NY 10022	US	Co-trustee	33.3%	0%

Benjamin J. Tisch 1989 Trust

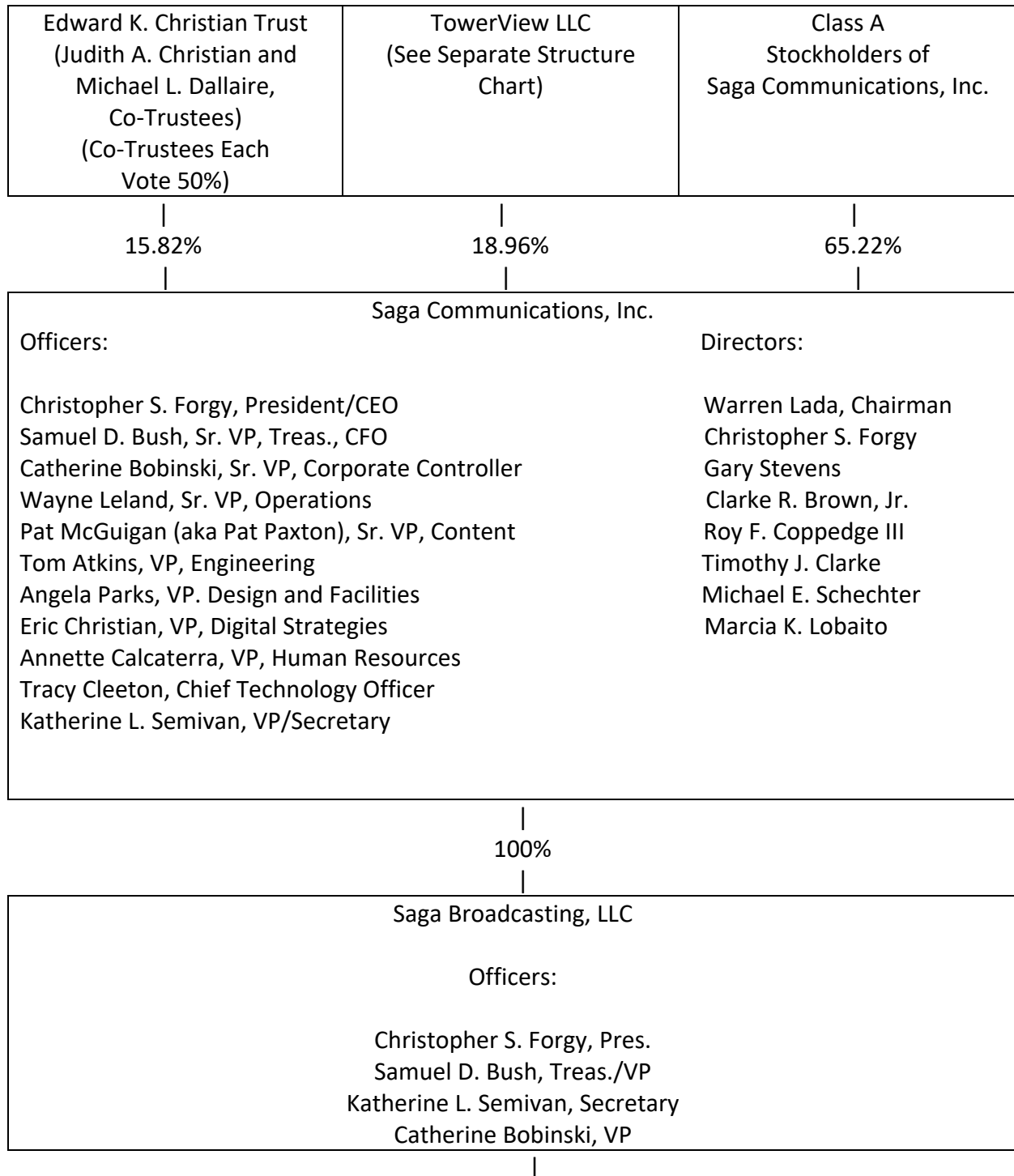
Name and Address	Citizenship	Positional Interest	Votes	Equity
Benjamin J. Tisch 1989 Trust 460 Park Avenue 20 th Floor New York, NY 10022	US	Partner in JT Family Partnership	N/A	N/A
James S. Tisch 460 Park Avenue 20 th Floor New York, NY 10022	US	Co-trustee	33.3%	0%
Daniel R. Tisch 460 Park Avenue 20 th Floor New York, NY 10022	US	Co-trustee	33.3%	0%
Andrew H. Tisch 460 Park Avenue 20 th Floor New York, NY 10022	US	Co-trustee	33.3%	0%

Samuel A. Tisch 1989 Trust

Name and Address	Citizenship	Positional Interest	Votes	Equity
Samuel A. Tisch 1989 Trust 460 Park Avenue 20 th Floor New York, NY 10022	US	Partner in JT Family Partnership	N/A	N/A
James S. Tisch 460 Park Avenue 20 th Floor New York, NY 10022	US	Co-trustee	33.3%	0%
Daniel R. Tisch 460 Park Avenue 20 th Floor New York, NY 10022	US	Co-trustee	33.3%	0%

Andrew H. Tisch 460 Park Avenue 20 th Floor New York, NY 10022	US	Co-trustee	33.3%	0%
--	----	------------	-------	----

Corporate Structure Chart
Saga Communications of Indiana, LLC



|
100%
|

Saga Communications of Indiana, LLC

Officers:

Christopher S. Forgy, Pres.
Samuel D. Bush, Treas./VP
Katherine L. Semivan, Secretary
Catherine Bobinski, VP

