

Section 74.1204 - Statement of Compliance
W280FF, Morgantown, WV to Channel 242D
FM Translator Facility ID. 76086
January, 2024

As demonstrated elsewhere in this Application, the Applicant proposes a minor modification to the above-referenced, non-reserved band, FM translator station. As discussed below, the instant proposal complies with the protection requirements set forth in Section 74.1204 of the FCC Rules.

Section 74.1204(a) Contour Overlap Protection Criteria

Attached are a series of maps which demonstrate that proposed technical facility complies with the contour overlap provisions of Section 74.1204(a) of the FCC Rules with respect to all pertinent co-channel (See Exhibit 1), first-adjacent channel (See Exhibit 2) and second/third-adjacent channel (See Exhibit 3) assignments, authorizations, and applications. The instant proposal is well clear of all other relevant protection considerations not represented herein.

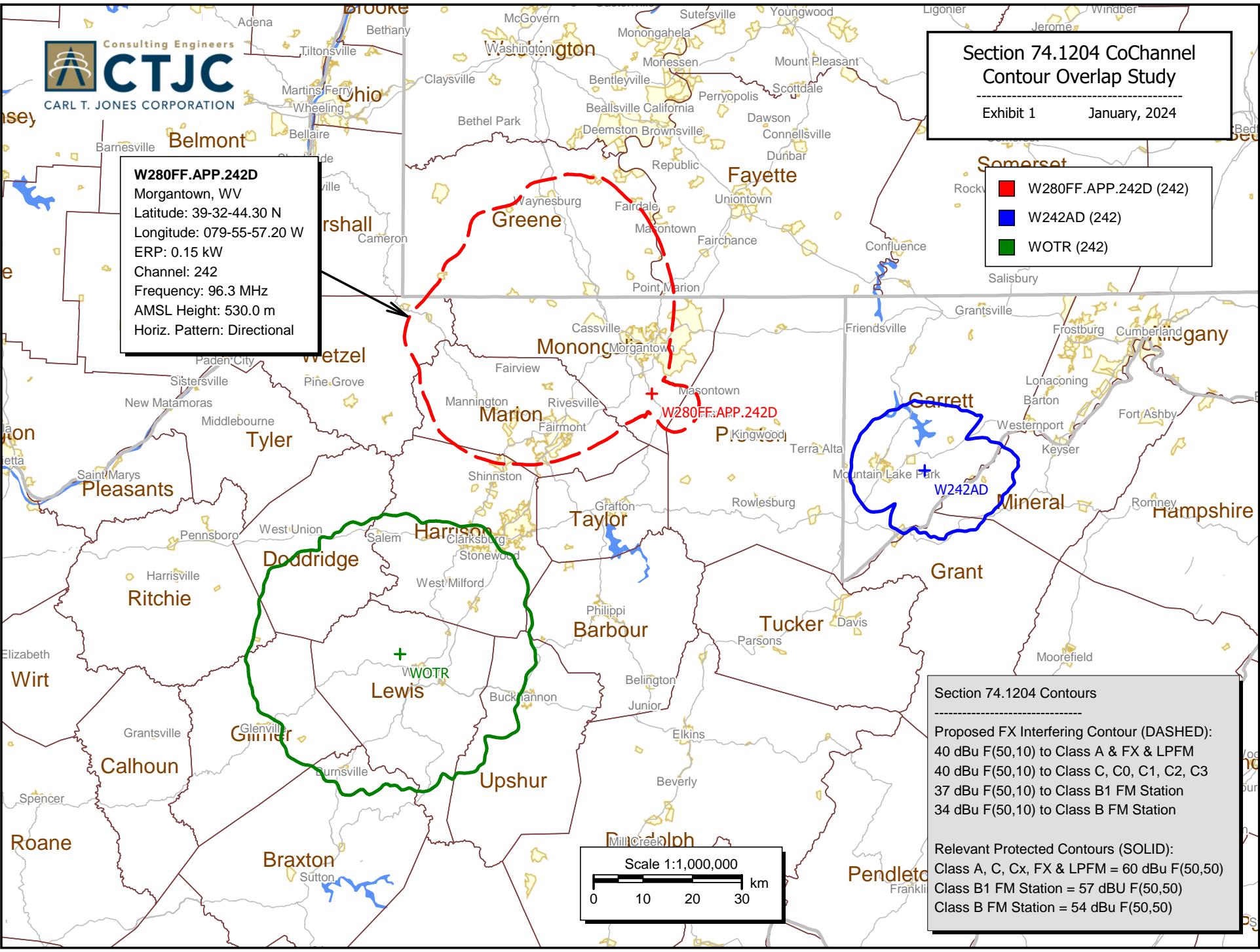


Section 74.1204 CoChannel Contour Overlap Study

Exhibit 1 January, 2024

W280FF.APP.242D
Morgantown, WV
Latitude: 39-32-44.30 N
Longitude: 079-55-57.20 W
ERP: 0.15 kW
Channel: 242
Frequency: 96.3 MHz
AMSL Height: 530.0 m
Horiz. Pattern: Directional

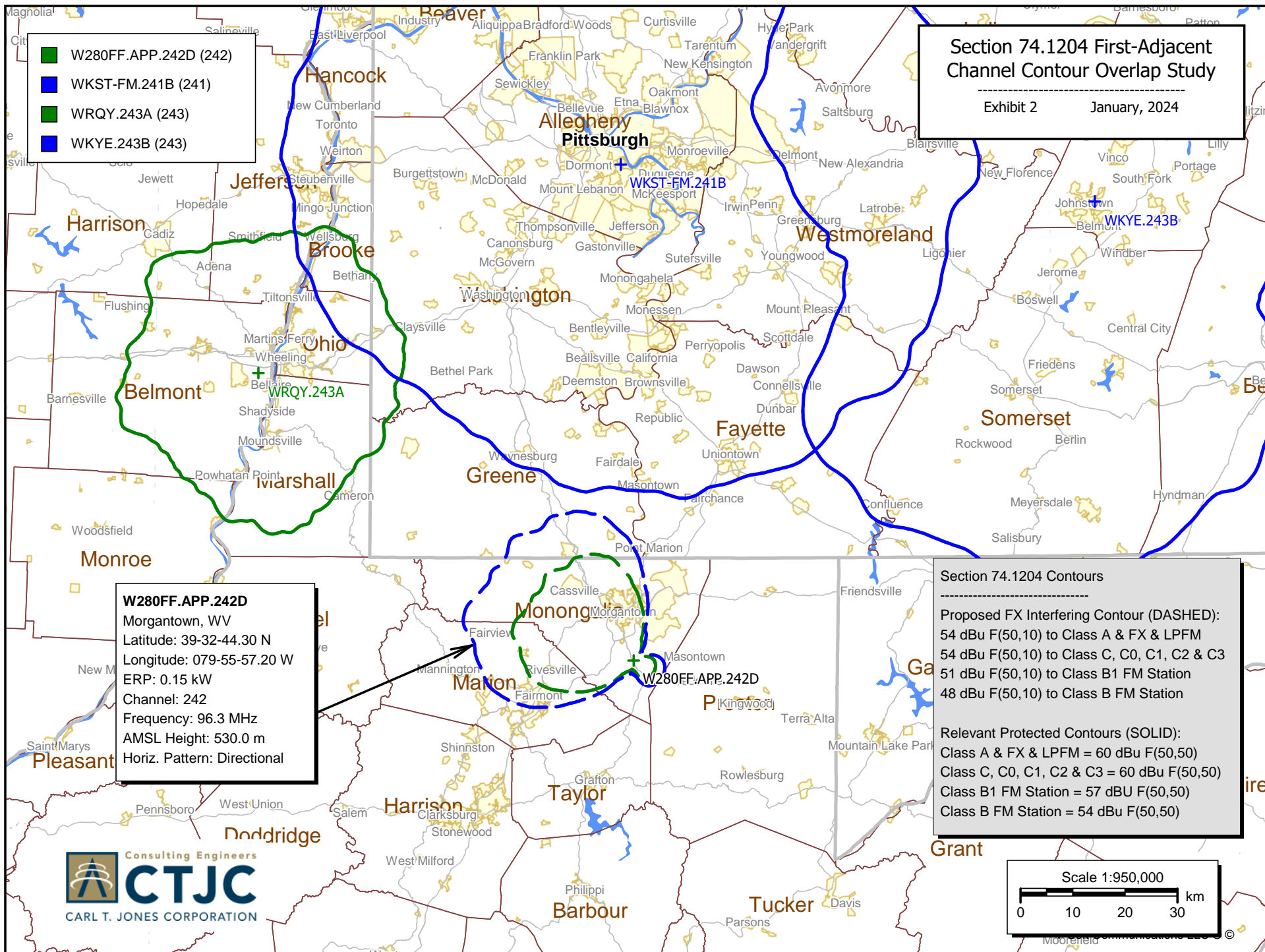
- W280FF.APP.242D (242)
- W242AD (242)
- WOTR (242)



Section 74.1204 Contours

Proposed FX Interfering Contour (DASHED):
40 dBu F(50,10) to Class A & FX & LPFM
40 dBu F(50,10) to Class C, C0, C1, C2, C3
37 dBu F(50,10) to Class B1 FM Station
34 dBu F(50,10) to Class B FM Station

Relevant Protected Contours (SOLID):
Class A, C, Cx, FX & LPFM = 60 dBu F(50,50)
Class B1 FM Station = 57 dBu F(50,50)
Class B FM Station = 54 dBu F(50,50)



Section 74.1204 2nd & 3rd Adjacent Channel Contour Overlap Study

Exhibit 3

January, 2024

- W280FF.APP.242D (242)
- WKMM (244)

W280FF.APP.242D
Morgantown, WV
Latitude: 39-32-44.30 N
Longitude: 079-55-57.20 W
ERP: 0.15 kW
Channel: 242
Frequency: 96.3 MHz
AMSL Height: 530.0 m
Horiz. Pattern: Directional

W280FF.APP.242D

Section 74.1204 Contours

Proposed FX Interfering Contour (SMALL):
100 dBu F(50,10) to Class A & FX & LPFM
100 dBu F(50,10) to Class C, C0, C1, C2 & C3
97 dBu F(50,10) to Class B1 FM Station
94 dBu F(50,10) to Class B FM Station

Relevant Protected Contours (SOLID):
Class A & FX & LPFM = 60 dBu F(50,50)
Class C, C0, C1, C2 & C3 = 60 dBu F(50,50)
Class B1 FM Station = 57 dBu F(50,50)
Class B FM Station = 54 dBu F(50,50)

Scale 1:200,000

0 2 4 6 km