

ENGINEERING EXHIBIT

Digital Low Power Television Station Application for Modification of Construction Permit prepared for

Gray Television Licensee, LLC
W30EZ-D Purvis, MS
Facility ID 186322
Ch. 30 15 kW Directional

Gray Television Licensee, LLC (“Gray”) is the licensee of digital Low Power Television station W30EZ-D, Channel 30, Facility ID 186322, Purvis MS. W30EZ-D is licensed to operate at 0.2 kW effective radiated power (“ERP”) with a directional antenna (file# 0000197965, granted October 11, 2022). A minor modification Construction Permit (“CP” file# 0000222769) authorizes W30EZ-D to relocate and to utilize a different directional antenna at increased ERP and height. *Gray* proposes herein to modify the CP to change the antenna’s make, model, and directional pattern.

As with the current CP, W30EZ-D will employ an antenna to be side-mounted on the tower structure associated with FCC Antenna Structure Registration number 1263929, located 31.2 km (19.4 miles) from the licensed site. No change to the overall structure height is proposed.

The proposed antenna is a PSI model PSILP12BB-30 having horizontal polarization. The proposed ERP is 15 kW using a “full service” out of channel emission mask. A plot of the directional antenna’s azimuthal pattern is supplied in Figure 1. Figure 2 depicts the coverage contour of the proposed facility as well as that of the licensed facility, demonstrating compliance with §73.3572 for a minor change.

Interference study per OET Bulletin 69¹ shows that the proposal complies with the FCC’s interference protection requirements toward all digital television, television translator, LPTV, and

¹FCC Office of Engineering and Technology Bulletin number 69, *Longley-Rice Methodology for Evaluating TV Coverage and Interference*, February 6, 2004 (“OET-69”). This analysis employed the FCC’s current “TVStudy” software with the default application processing template settings, 1 km cell size, and 1.0 km terrain increment.

Class A stations. The results, summarized in Table 1, show that any new interference does not exceed the FCC's interference limits (0.5 percent to full power and Class A stations, and 2.0 percent to secondary stations) to any facility.

Human Exposure to Radiofrequency Electromagnetic Field (Environmental)

The proposed operation was evaluated for human exposure to RF energy using the procedures outlined in the FCC's OET Bulletin Number 65. Based on OET-65 equation (10) and considering 20 percent antenna relative field in downward elevations, the calculated signal density near the tower at two meters above ground level attributable to the proposed facility is $3.3 \mu\text{W}/\text{cm}^2$, which is 0.9 percent of the general population/uncontrolled maximum permitted exposure limit. This is below the five percent threshold limit described in §1.1307(b) regarding sites with multiple emitters, categorically excluding the applicant from responsibility for taking any corrective action in the areas where the proposal's contribution is less than five percent.

The general public will not be exposed to RF levels attributable to the proposal in excess of the FCC's guidelines. RF exposure warning signs will continue to be posted. With respect to worker safety, the applicant will coordinate exposure procedures with all pertinent stations and will reduce power or cease operation as necessary to protect persons having access to the site, tower, or antenna from RF electromagnetic field exposure in excess of FCC guidelines. This exhibit is limited to the evaluation of exposure to RF electromagnetic field. No increase in structure height is proposed.

Engineering Exhibit
Gray Television Licensee, LLC (W30EZ-D)
(page 3 of 3)

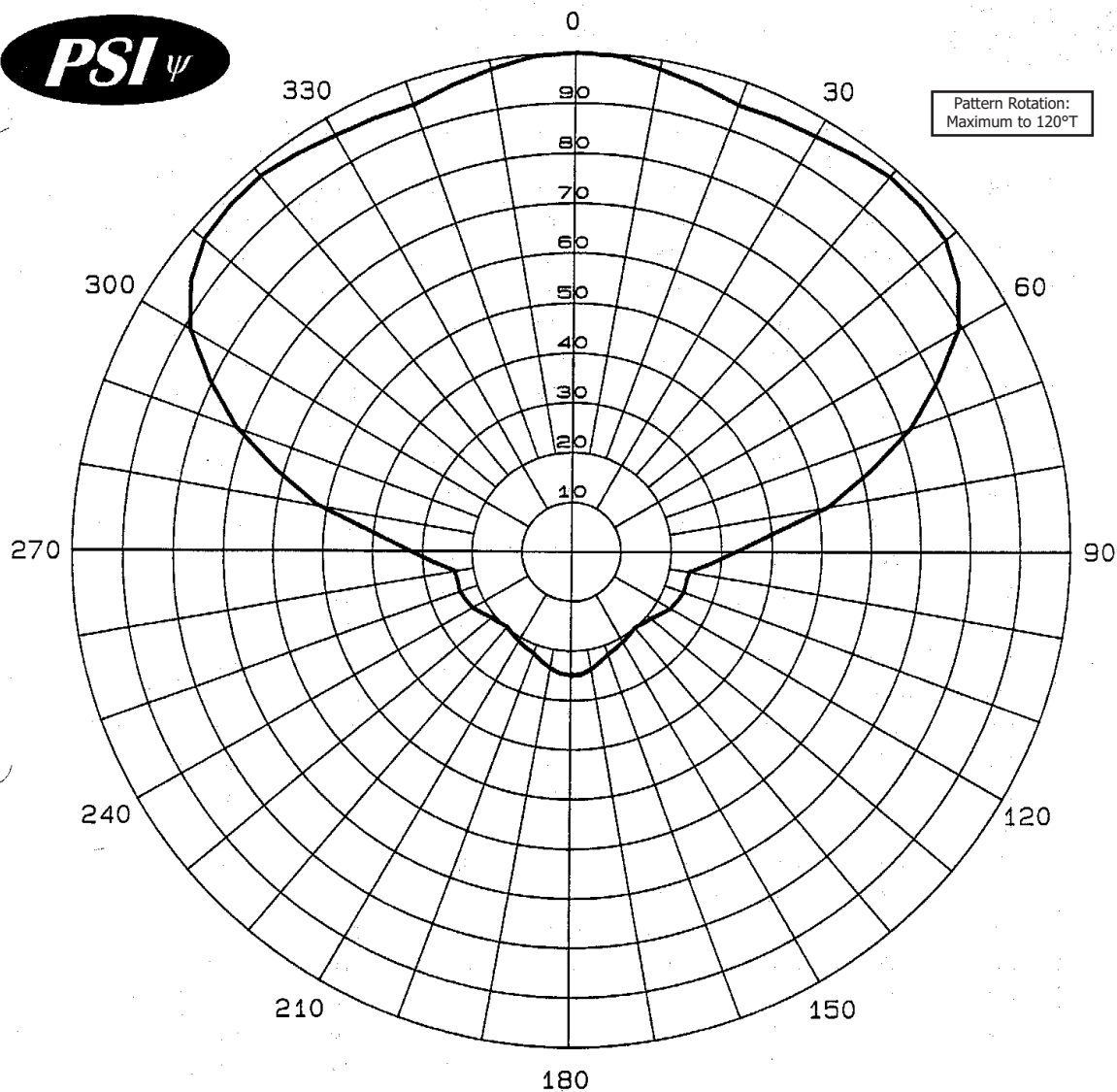


List of Attachments

Figure 1	Antenna Azimuthal Pattern
Figure 2	Coverage Contour Comparison
Table 1	TVStudy Analysis of Proposal
Form 2100	Saved Version of Engineering Sections of FCC Form at Time of Upload

Chesapeake RF Consultants, LLC

Joseph M. Davis, P.E.	October 27, 2023	
207 Old Dominion Road	Yorktown, VA 23692	703-650-9600



Calculated Relative Field
Azimuth Plane Pattern
Low Power UHF Slot
Antenna Type: PSILP
Pattern Type: BB
Directivity: 2.5 (4.0 dB)
Date: 7/1/97
Rev. 0

PROPAGATION SYSTEMS, INC.
PO BOX 113
EBENSBURG, PA. 15931

Figure 1
Antenna Azimuthal Pattern
W30EZ-D Purvis, MS
Facility ID 186322
Ch. 30 15 kW Directional

prepared for
Gray Television Licensee, LLC

October, 2023





Chesapeake RF Consultants, LLC
Radiofrequency Consulting Engineers
Digital Television and Radio

Figure 2
Coverage Contour Comparison
W30EZ-D Purvis, MS
Facility ID 186322
Ch. 30 15 kW Directional

prepared for
Gray Television Licensee, LLC

October, 2023

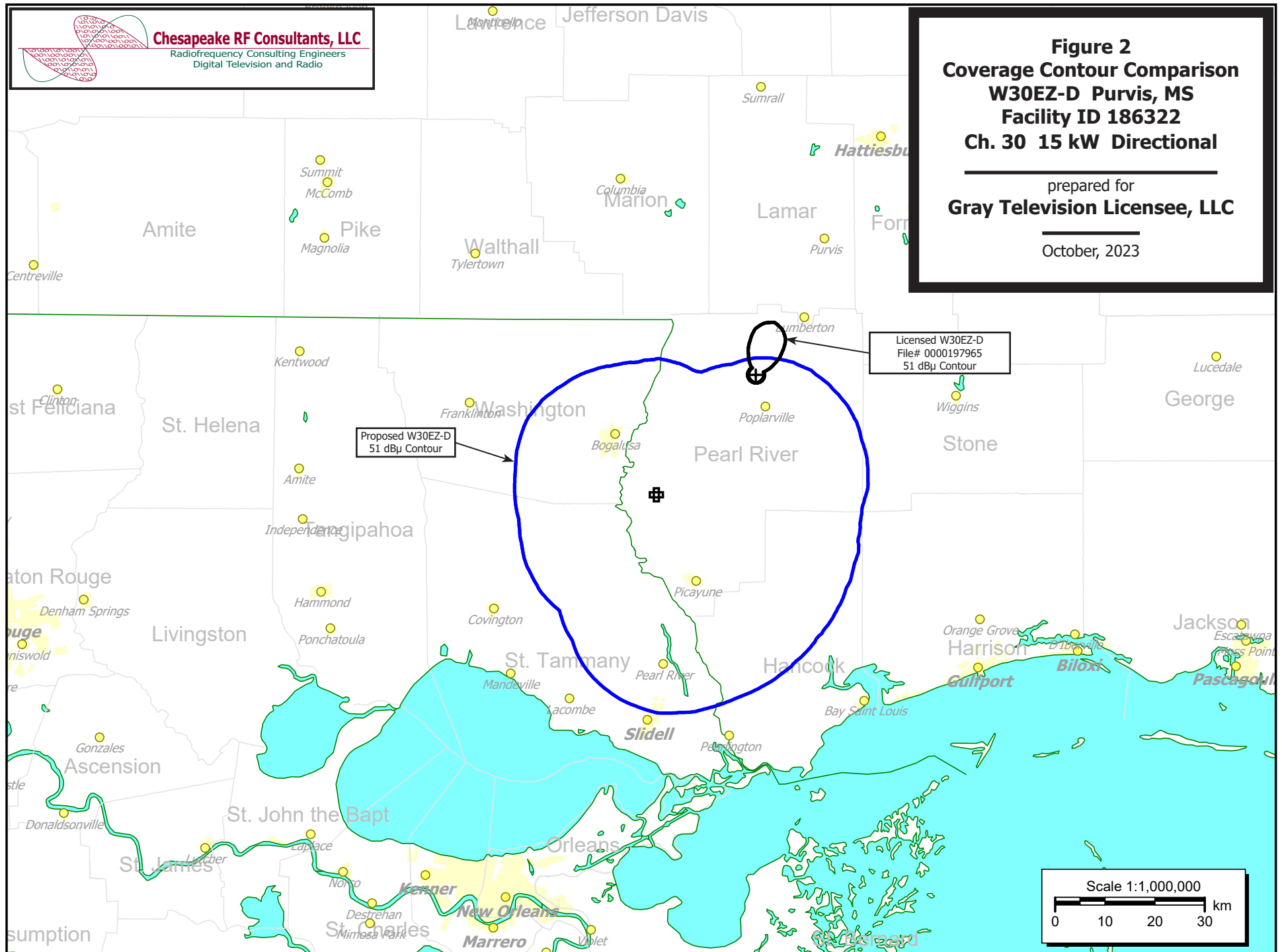


Table 1 W30EZ-D TVStudy Analysis of Proposal (page 1 of 5)



tvstudy v2.2.5 (4uoc83)
Database: localhost, Study: W30EZ-D 1263929 PSIBB, Model: Longley-Rice
Start: 2023.10.26 16:39:31

Study created: 2023.10.26 16:39:31

Study build station data: LMS TV 2023-10-26

Proposal: W30EZ-D D30 LD APP PURVIS, MS
File number: W30EZ-D 1263929 PSIBB
Facility ID: 186322
Station data: User record
Record ID: 209
Country: U.S.

Build options:
Protect pre-transition records not on baseline channel

Search options:
Baseline record excluded if station has CP

Stations potentially affected by proposal:

IX	Call	Chan	Svc	Status	City, State	File Number	Distance
No	WFB	D29	DD	CP	DESTIN, FL	BLANK0000216432	256.7 km
No	K29LR-D	D29	LD	LIC	BATON ROUGE, LA	BLANK0000103483	150.3
Yes	WVUE-DT	D29	DT	CP	NEW ORLEANS, LA	BLANK0000127677	82.8
Yes	WVUE-DT	D29	DT	LIC	NEW ORLEANS, LA	BLANK0000203686	82.8
No	W29EY-D	D29	LD	LIC	COLUMBIA, MS	BLANK0000125050	65.5
No	WIAT	D30	DT	LIC	BIRMINGHAM, AL	BLANK0000198139	417.8
No	WGIQ	D30	DT	LIC	LOUISVILLE, AL	BLANK0000067031	427.3
Yes	WEIQ	D30	DT	LIC	MOBILE, AL	BLANK0000111746	178.8
No	W30EL-D	D30	LD	LIC	MONTGOMERY, AL	BLANK0000195920	374.0
No	W30EL-D	D30	LD	APP	MONTGOMERY, AL	BLANK0000215013	374.0
No	DDW45DJ-D	D30	LD	APP	PANAMA CITY, FL	BLANK0000123144	384.9
No	K30QG-D	D30	LD	LIC	ALEXANDRIA, LA	BLANK0000086776	263.4
No	WLFT-CD	D30	DC	LIC	BATON ROUGE, LA	BLDTA20110912ACB	128.1
No	K30QV-D	D30	LD	LIC	DERIDDER, LA	BLANK0000194776	332.3
No	KFOL-CD	D30	DC	LIC	HOUMA, LA	BLANK0000189681	154.4
No	KXKW-LD	D30	LD	LIC	LAFAYETTE, LA	BLANK0000166791	214.0
No	K30QB-D	D30	LD	LIC	SHREVEPORT, LA	BLANK0000068681	429.2
No	W30ES-D	D30	LD	LIC	COLUMBUS, MS	BLANK0000196017	340.8
No	W30ES-D	D30	LD	APP	COLUMBUS, MS	BLANK0000202365	340.8
Yes	WLBT	D30	DT	LIC	JACKSON, MS	BLCDT20100119AEE	180.2
No	WMBP-LD	D31	LD	LIC	MOBILE, AL	BLANK0000214594	187.7
No	W31EL-D	D31	LD	LIC	BATON ROUGE, LA	BLANK0000157740	132.1
No	KNOV-CD	D31	DC	LIC	NEW ORLEANS, LA	BLANK0000087428	86.2
No	WTBL-LD	D31	LD	LIC	BILOXI, MS	BLANK0000219240	79.6
Yes	WTBL-LD	D31	LD	CP	BILOXI, MS	BLANK0000221026	64.3
No	WGBC	D31	DT	CP	MERIDIAN, MS	BLANK0000035926	209.3
No	WGBC	D31	DT	LIC	MERIDIAN, MS	BLCDT20071024AAK	209.3

No non-directional AM stations found within 0.8 km

No directional AM stations found within 3.2 km

Record parameters as studied:

Channel: D30
Mask: Full Service
Latitude: 30 40 51.50 N (NAD83)
Longitude: 89 45 44.70 W
Height AMSL: 139.7 m
HAAT: 0.0 m
Peak ERP: 15.0 kW
Antenna: PSI BB 120.0 deg
Elev Pattn: Generic
Elec Tilt: 1.00

50.3 dBu contour:
Azimuth ERP HAAT Distance
0.0 deg 0.794 kW 96.1 m 28.2 km

Table 1 W30EZ-D TVStudy Analysis of Proposal
(page 2 of 5)



45.0	5.77	96.1	38.3
90.0	13.8	94.4	42.4
135.0	14.0	107.2	43.9
180.0	11.9	119.4	44.2
225.0	0.864	122.9	31.1
270.0	0.662	117.0	29.3
315.0	0.794	116.0	30.2

Database HAAT does not agree with computed HAAT
Database HAAT: 0 m Computed HAAT: 109 m

Distance to Canadian border: 1376.2 km

Distance to Mexican border: 874.0 km

Conditions at FCC monitoring station: Powder Springs GA
Bearing: 51.9 degrees Distance: 590.8 km

Proposal is not within the West Virginia quiet zone area

Conditions at Table Mountain receiving zone:
Bearing: 311.1 degrees Distance: 1745.8 km

Study cell size: 1.00 km
Profile point spacing: 1.00 km

Maximum new IX to full-service and Class A: 0.50%
Maximum new IX to LPTV: 2.00%

Interference to BLANK0000127677 CP scenario 1

	Call	Chan	Svc	Status	City, State	File Number	Distance
Desired:	WVUE-DT	D29	DT	CP	NEW ORLEANS, LA	BLANK0000127677	
Undesireds:	W30EZ-D	D30	LD	APP	PURVIS, MS	W30EZ-D 1263929 PSIBB	82.8 km
	WFBD	D29	DT	LIC	DESTIN, FL	BLANK0000131443	330.4
	WLFT-CD	D30	DC	LIC	BATON ROUGE, LA	BLDTA20110912ACB	116.3
	KFOL-CD	D30	DC	LIC	HOUMA, LA	BLANK0000189681	89.6
Service area		Terrain-limited		IX-free, before		IX-free, after	Percent New IX
25459.1 1,683,186		25457.1 1,683,143		24957.9 1,607,553		24883.9 1,606,900	0.30 0.04
Undesired		Total IX		Unique IX, before		Unique IX, after	
W30EZ-D D30 LD APP		75.0 653		74.0 653			
WFBD D29 DT LIC		4.0 141		3.0 141			
WLFT-CD D30 DC LIC		75.1 6,196		75.1 6,196			
KFOL-CD D30 DC LIC		420.1 69,253		420.1 69,253			

Interference to BLANK0000127677 CP scenario 2

	Call	Chan	Svc	Status	City, State	File Number	Distance
Desired:	WVUE-DT	D29	DT	CP	NEW ORLEANS, LA	BLANK0000127677	
Undesireds:	W30EZ-D	D30	LD	APP	PURVIS, MS	W30EZ-D 1263929 PSIBB	82.8 km
	WFBD	D29	DD	CP	DESTIN, FL	BLANK0000216432	293.6
	WLFT-CD	D30	DC	LIC	BATON ROUGE, LA	BLDTA20110912ACB	116.3
	KFOL-CD	D30	DC	LIC	HOUMA, LA	BLANK0000189681	89.6
Service area		Terrain-limited		IX-free, before		IX-free, after	Percent New IX
25459.1 1,683,186		25457.1 1,683,143		24955.9 1,607,553		24881.9 1,606,900	0.30 0.04
Undesired		Total IX		Unique IX, before		Unique IX, after	
W30EZ-D D30 LD APP		75.0 653		74.0 653			
WFBD D29 DD CP		6.0 141		5.0 141			
WLFT-CD D30 DC LIC		75.1 6,196		75.1 6,196			
KFOL-CD D30 DC LIC		420.1 69,253		420.1 69,253			

Interference to BLANK0000203686 LIC scenario 1

Table 1 W30EZ-D TVStudy Analysis of Proposal
(page 3 of 5)



Desired:	Call	Chan	Svc	Status	City, State	File Number	Distance
	WVUE-DT	D29	DT	LIC	NEW ORLEANS, LA	BLANK0000203686	
Undesireds:	W30EZ-D	D30	LD	APP	PURVIS, MS	W30EZ-D 1263929 PSIBB	82.8 km
	WFBD	D29	DT	LIC	DESTIN, FL	BLANK0000131443	330.4
	WLFT-CD	D30	DC	LIC	BATON ROUGE, LA	BLDTA20110912ACB	116.3
	KFOL-CD	D30	DC	LIC	HOUMA, LA	BLANK0000189681	89.6
Service area		Terrain-limited		IX-free, before		IX-free, after	Percent New IX
24673.2 1,659,211		24672.2 1,659,168		24244.3 1,582,973		24176.5 1,582,280	0.28 0.04

Undesired	Total IX	Unique IX, before	Unique IX, after
W30EZ-D D30 LD APP	67.8 693	67.8 693	67.8 693
WFBD D29 DT LIC	4.0 141	4.0 141	4.0 141
WLFT-CD D30 DC LIC	34.0 1,680	34.0 1,680	34.0 1,680
KFOL-CD D30 DC LIC	389.9 74,374	389.9 74,374	389.9 74,374

Interference to BLANK0000203686 LIC scenario 2

Desired:	Call	Chan	Svc	Status	City, State	File Number	Distance
	WVUE-DT	D29	DT	LIC	NEW ORLEANS, LA	BLANK0000203686	
Undesireds:	W30EZ-D	D30	LD	APP	PURVIS, MS	W30EZ-D 1263929 PSIBB	82.8 km
	WFBD	D29	DD	CP	DESTIN, FL	BLANK0000216432	293.6
	WLFT-CD	D30	DC	LIC	BATON ROUGE, LA	BLDTA20110912ACB	116.3
	KFOL-CD	D30	DC	LIC	HOUMA, LA	BLANK0000189681	89.6
Service area		Terrain-limited		IX-free, before		IX-free, after	Percent New IX
24673.2 1,659,211		24672.2 1,659,168		24243.3 1,582,973		24175.5 1,582,280	0.28 0.04

Undesired	Total IX	Unique IX, before	Unique IX, after
W30EZ-D D30 LD APP	67.8 693	67.8 693	67.8 693
WFBD D29 DD CP	5.0 141	5.0 141	5.0 141
WLFT-CD D30 DC LIC	34.0 1,680	34.0 1,680	34.0 1,680
KFOL-CD D30 DC LIC	389.9 74,374	389.9 74,374	389.9 74,374

Interference to BLANK0000111746 LIC scenario 1

Desired:	Call	Chan	Svc	Status	City, State	File Number	Distance
	WEIQ	D30	DT	LIC	MOBILE, AL	BLANK0000111746	
Undesireds:	W30EZ-D	D30	LD	APP	PURVIS, MS	W30EZ-D 1263929 PSIBB	178.8 km
	WFBD	D29	DT	LIC	DESTIN, FL	BLANK0000131443	118.0
	WIAT	D30	DT	LIC	BIRMINGHAM, AL	BLANK0000198139	330.2
	WGIQ	D30	DT	LIC	LOUISVILLE, AL	BLANK0000067031	261.7
	WLBT	D30	DT	LIC	JACKSON, MS	BLCDT20100119AEE	292.6
Service area		Terrain-limited		IX-free, before		IX-free, after	Percent New IX
19085.7 1,053,327		18955.5 1,052,336		18737.6 1,046,854		18736.7 1,046,854	0.01 0.00

Undesired	Total IX	Unique IX, before	Unique IX, after
W30EZ-D D30 LD APP	8.1 83	1.0 0	1.0 0
WFBD D29 DT LIC	117.1 4,621	113.0 4,608	113.0 4,608
WIAT D30 DT LIC	5.1 109	0.0 0	0.0 0
WGIQ D30 DT LIC	4.0 13	0.0 0	0.0 0
WLBT D30 DT LIC	100.8 861	95.7 752	89.6 669

Interference to BLANK0000111746 LIC scenario 2

Desired:	Call	Chan	Svc	Status	City, State	File Number	Distance
	WEIQ	D30	DT	LIC	MOBILE, AL	BLANK0000111746	
Undesireds:	W30EZ-D	D30	LD	APP	PURVIS, MS	W30EZ-D 1263929 PSIBB	178.8 km
	WFBD	D29	DD	CP	DESTIN, FL	BLANK0000216432	81.3
	WIAT	D30	DT	LIC	BIRMINGHAM, AL	BLANK0000198139	330.2
	WGIQ	D30	DT	LIC	LOUISVILLE, AL	BLANK0000067031	261.7
	WLBT	D30	DT	LIC	JACKSON, MS	BLCDT20100119AEE	292.6
Service area		Terrain-limited		IX-free, before		IX-free, after	Percent New IX

Table 1 W30EZ-D TV Study Analysis of Proposal
(page 4 of 5)

19085.7 1,053,327 18955.5 1,052,336 18737.6 1,046,854 18736.7 1,046,854 0.01 0.00

Undesired		Total IX	Unique IX, before	Unique IX, after
W30EZ-D D30 LD APP	8.1	83		1.0
WFBD D29 DD CP	117.1	4,621	113.0	4,608
WIAT D30 DT LIC	5.1	109	0.0	0
WGIQ D30 DT LIC	4.0	13	0.0	0
WLBT D30 DT LIC	100.8	861	95.7	752
				89.6
				669

Interference to BLCDT20100119AEE LIC scenario 1

Desired:	Call	Chan	Svc	Status	City, State	File Number	Distance
	WLBT	D30	DT	LIC	JACKSON, MS	BLCDT20100119AEE	
Undesireds:	W30EZ-D	D30	LD	APP	PURVIS, MS	W30EZ-D 1263929 PSIBB	180.2 km
	WIAT	D30	DT	LIC	BIRMINGHAM, AL	BLANK0000198139	362.5
	WEIQ	D30	DT	LIC	MOBILE, AL	BLANK0000111746	292.6
	KLRT-TV	D30	DT	LIC	LITTLE ROCK, AR	BLANK0000149904	347.5
	WLFT-CD	D30	DC	LIC	BATON ROUGE, LA	BLDTA20110912ACB	213.5
	WMC-TV	D30	DT	CP	MEMPHIS, TN	BLANK0000207177	331.7
	WGBC	D31	DT	CP	MERIDIAN, MS	BLANK0000035926	159.4

Service area	Terrain-limited	IX-free, before	IX-free, after	Percent New IX
43114.4 948,233	42973.0 946,937	42607.0 941,024	42590.8 940,680	0.04 0.04

Undesired		Total IX	Unique IX, before	Unique IX, after
W30EZ-D D30 LD APP	29.5	635		16.3
WIAT D30 DT LIC	79.4	629	22.0	133
WEIQ D30 DT LIC	201.3	2,038	161.0	1,711
KLRT-TV D30 DT LIC	10.0	4	2.0	2
WLFT-CD D30 DC LIC	19.3	84	16.3	82
WMC-TV D30 DT CP	34.9	215	19.9	163
WGBC D31 DT CP	101.6	3,463	76.4	3,322
				76.4
				3,322

Interference to BLCDT20100119AEE LIC scenario 2

Desired:	Call	Chan	Svc	Status	City, State	File Number	Distance
	WLBT	D30	DT	LIC	JACKSON, MS	BLCDT20100119AEE	
Undesireds:	W30EZ-D	D30	LD	APP	PURVIS, MS	W30EZ-D 1263929 PSIBB	180.2 km
	WIAT	D30	DT	LIC	BIRMINGHAM, AL	BLANK0000198139	362.5
	WEIQ	D30	DT	LIC	MOBILE, AL	BLANK0000111746	292.6
	KLRT-TV	D30	DT	LIC	LITTLE ROCK, AR	BLANK0000149904	347.5
	WLFT-CD	D30	DC	LIC	BATON ROUGE, LA	BLDTA20110912ACB	213.5
	WMC-TV	D30	DT	CP	MEMPHIS, TN	BLANK0000207177	331.7
	WGBC	D31	DT	LIC	MERIDIAN, MS	BLCDT20071024AAK	159.4

Service area	Terrain-limited	IX-free, before	IX-free, after	Percent New IX
43114.4 948,233	42973.0 946,937	42614.0 941,134	42597.8 940,790	0.04 0.04

Undesired		Total IX	Unique IX, before	Unique IX, after
W30EZ-D D30 LD APP	29.5	635		16.3
WIAT D30 DT LIC	79.4	629	22.0	133
WEIQ D30 DT LIC	201.3	2,038	161.0	1,711
KLRT-TV D30 DT LIC	10.0	4	2.0	2
WLFT-CD D30 DC LIC	19.3	84	16.3	82
WMC-TV D30 DT CP	34.9	215	19.9	163
WGBC D31 DT LIC	94.5	3,353	69.4	3,212
				69.4
				3,212

Interference to BLANK0000221026 CP scenario 1

Desired:	Call	Chan	Svc	Status	City, State	File Number	Distance
	WTBL-LD	D31	LD	CP	BILOXI, MS	BLANK0000221026	
Undesireds:	W30EZ-D	D30	LD	APP	PURVIS, MS	W30EZ-D 1263929 PSIBB	64.3 km
	WMBP-LD	D31	LD	LIC	MOBILE, AL	BLANK0000214594	123.6
	KNOV-CD	D31	DC	LIC	NEW ORLEANS, LA	BLANK0000087428	127.1
	WGBC	D31	DT	CP	MERIDIAN, MS	BLANK0000035926	182.3
	WLOX	D32	DT	LIC	BILOXI, MS	BLANK0000059502	0.0

Table 1 W30EZ-D TVStudy Analysis of Proposal
(page 5 of 5)

Service area		Terrain-limited		IX-free, before		IX-free, after		Percent New IX	
10424.4	403,828	10413.2	403,815	10143.6	400,669	10137.6	400,640	0.06	0.01
Undesired		Total IX		Unique IX, before		Unique IX, after			
W30EZ-D	D30 LD APP	9.0	248			6.0	29		
WMBP-LD	D31 LD LIC	20.1	412	16.1	363	16.1	363		
KNOV-CD	D31 DC LIC	3.0	225	3.0	225	1.0	9		
WGBC	D31 DT CP	38.7	736	38.7	736	37.7	733		
WLOX	D32 DT LIC	211.9	1,822	207.9	1,773	207.9	1,773		

Interference to BLANK0000221026 CP scenario 2

Desired:	Call	Chan	Svc	Status	City, State	File Number	Distance
	WTBL-LD	D31	LD	CP	BILOXI, MS	BLANK0000221026	
Undesireds:	W30EZ-D	D30	LD	APP	PURVIS, MS	W30EZ-D 1263929 PSIBB	64.3 km
	WMBP-LD	D31	LD	LIC	MOBILE, AL	BLANK0000214594	123.6
	KNOV-CD	D31	DC	LIC	NEW ORLEANS, LA	BLANK0000087428	127.1
	WGBC	D31	DT	LIC	MERIDIAN, MS	BLCDT20071024AAK	182.3
	WLOX	D32	DT	LIC	BILOXI, MS	BLANK0000059502	0.0

Service area		Terrain-limited		IX-free, before		IX-free, after		Percent New IX	
10424.4	403,828	10413.2	403,815	10148.7	400,719	10142.7	400,690	0.06	0.01
Undesired		Total IX		Unique IX, before		Unique IX, after			
W30EZ-D	D30 LD APP	9.0	248			6.0	29		
WMBP-LD	D31 LD LIC	20.1	412	16.1	363	16.1	363		
KNOV-CD	D31 DC LIC	3.0	225	3.0	225	1.0	9		
WGBC	D31 DT LIC	33.6	686	33.6	686	32.6	683		
WLOX	D32 DT LIC	211.9	1,822	207.9	1,773	207.9	1,773		

Interference to proposal scenario 1

Desired:	Call	Chan	Svc	Status	City, State	File Number	Distance
	W30EZ-D	D30	LD	APP	PURVIS, MS	W30EZ-D 1263929 PSIBB	
Undesireds:	WVUE-DT	D29	DT	CP	NEW ORLEANS, LA	BLANK0000127677	82.8 km
	WEIQ	D30	DT	LIC	MOBILE, AL	BLANK0000111746	178.8
	WLFT-CD	D30	DC	LIC	BATON ROUGE, LA	BLDTA20110912ACB	128.1
	WLBT	D30	DT	LIC	JACKSON, MS	BLCDT20100119AEE	180.2
	WTBL-LD	D31	LD	LIC	BILOXI, MS	BLANK0000219240	79.6

Service area		Terrain-limited		IX-free		Percent IX	
4156.0	145,482	4153.0	145,482	4127.7	145,403	0.61	0.05
Undesired		Total IX		Unique IX		Prcnt Unique IX	
WEIQ	D30 DT LIC	14.1	31	3.0	0	0.07	0.00
WLFT-CD	D30 DC LIC	3.0	0	0.0	0	0.00	0.00
WLBT	D30 DT LIC	22.2	79	11.1	48	0.27	0.03

Interference to proposal scenario 2

Desired:	Call	Chan	Svc	Status	City, State	File Number	Distance
	W30EZ-D	D30	LD	APP	PURVIS, MS	W30EZ-D 1263929 PSIBB	
Undesireds:	WVUE-DT	D29	DT	CP	NEW ORLEANS, LA	BLANK0000127677	82.8 km
	WEIQ	D30	DT	LIC	MOBILE, AL	BLANK0000111746	178.8
	WLFT-CD	D30	DC	LIC	BATON ROUGE, LA	BLDTA20110912ACB	128.1
	WLBT	D30	DT	LIC	JACKSON, MS	BLCDT20100119AEE	180.2
	WTBL-LD	D31	LD	CP	BILOXI, MS	BLANK0000221026	64.3

Service area		Terrain-limited		IX-free		Percent IX	
4156.0	145,482	4153.0	145,482	4127.7	145,403	0.61	0.05
Undesired		Total IX		Unique IX		Prcnt Unique IX	
WEIQ	D30 DT LIC	14.1	31	3.0	0	0.07	0.00
WLFT-CD	D30 DC LIC	3.0	0	0.0	0	0.00	0.00
WLBT	D30 DT LIC	22.2	79	11.1	48	0.27	0.03
WTBL-LD	D31 LD CP	1.0	0	0.0	0	0.00	0.00

**Channel and
Facility
Information**

Section	Question	Response
Facility ID	186322	
State	Mississippi	
City	PURVIS	
LPD Channel	30	

Antenna Location
Data

Section	Question	Response
Antenna Structure Registration	Do you have an FCC Antenna Structure Registration (ASR) Number?	Yes
	ASR Number	1263929
Coordinates (NAD83)	Latitude	30° 40' 51.5" N+
	Longitude	089° 45' 44.7" W-
	Structure Type	LTOWER-Lattice Tower
	Overall Structure Height	94.8 meters
	Support Structure Height	91.4 meters
	Ground Elevation (AMSL)	59.4 meters
Antenna Data	Height of Radiation Center Above Ground Level	80.3 meters
	Height of Radiation Center Above Mean Sea Level	139.7 meters
	Effective Radiated Power	15 kW

Antenna
Technical Data

Section	Question	Response
Antenna Type	Antenna Type	Directional Custom
	Do you have an Antenna ID?	No
	Antenna ID	
Antenna Manufacturer and Model	Manufacturer:	PSI
	Model	PSILP12BB-30
	Rotation	120 degrees
	Electrical Beam Tilt	1.0
	Mechanical Beam Tilt	Not Applicable
	toward azimuth	
	Polarization	Horizontal
Elevation Radiation Pattern	Does the proposed antenna propose elevation radiation patterns that vary with azimuth for reasons other than the use of mechanical beam tilt?	No
	Uploaded file for elevation antenna (or radiation) pattern data	
	Out-of-Channel Emission Mask:	Full Service

Directional Antenna Relative Field Values (Pre-rotated Pattern)

Degree	Value	Degree	Value	Degree	Value	Degree	Value
0	1.0	90	0.33	180	0.25	270	0.33
10	0.98	100	0.24	190	0.24	280	0.52
20	0.95	110	0.24	200	0.22	290	0.72
30	0.96	120	0.23	210	0.21	300	0.89
40	0.98	130	0.21	220	0.20	310	0.97
50	0.97	140	0.20	230	0.21	320	0.98
60	0.89	150	0.21	240	0.23	330	0.96
70	0.72	160	0.22	250	0.24	340	0.95
80	0.52	170	0.24	260	0.24	350	0.98

Additional Azimuths

Degree	V _A
--------	----------------