

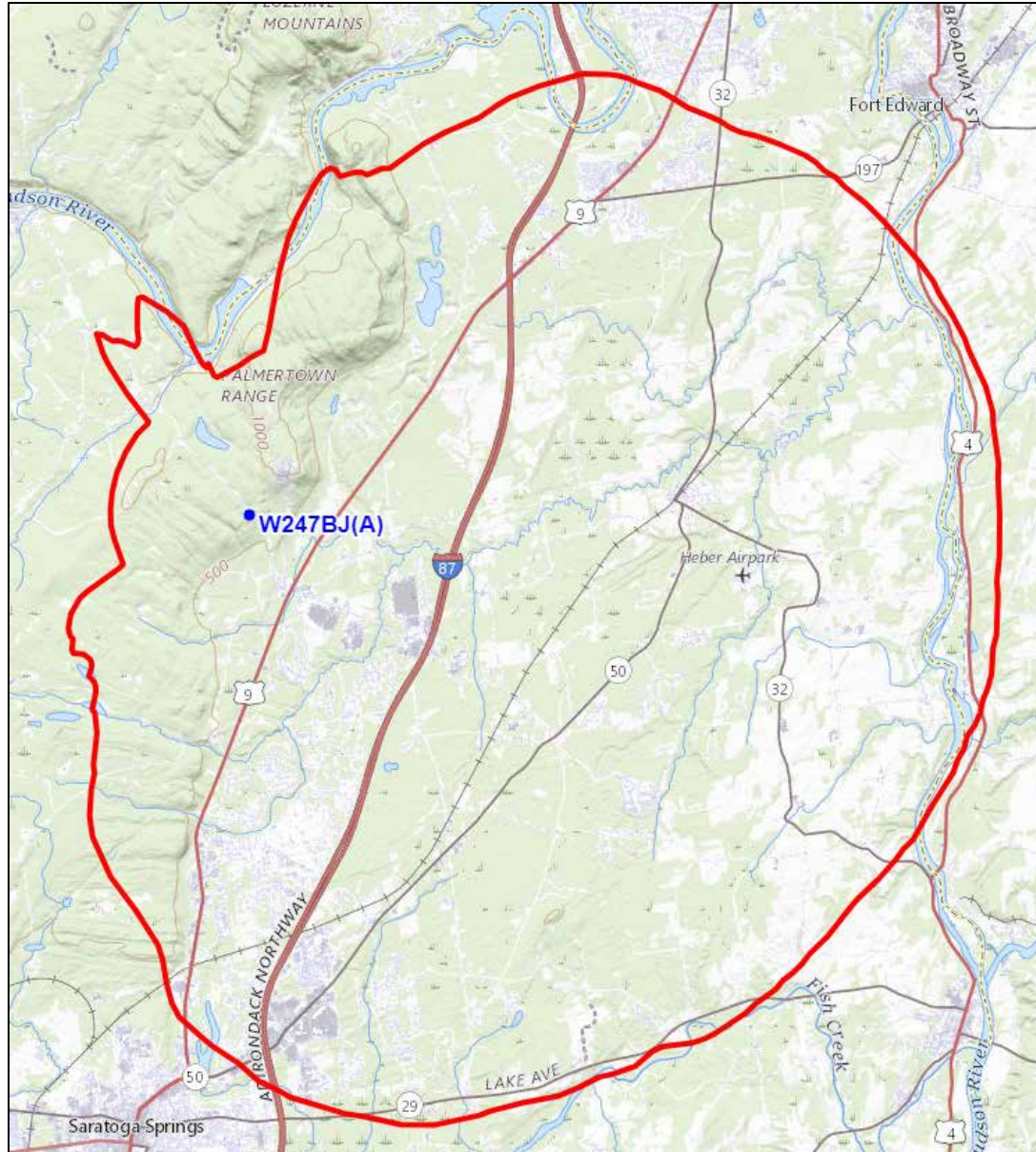


REC Networks/Michelle Bradley CBT
11541 Riverton Wharf Rd.
Mardela Springs, MD 21837
844.REC.LPFM/202.621.2355
recnet.com

Minor change for W247BJ
GLENS FALLS, NY

THE ST. LAWRENCE UNIVERSITY
BLFT-20060228AAN

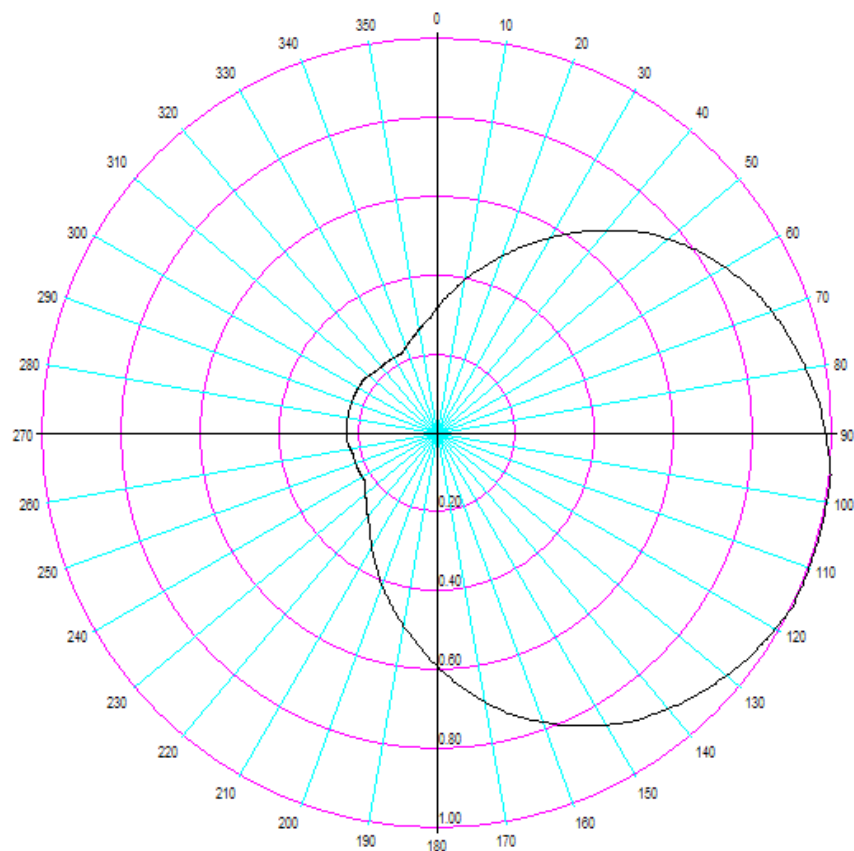
PROPOSED 60dBu F(50,50) SERVICE CONTOUR



SARATOGA SPRINGS, NY ~ Channel 242D (96.3 MHz) ~ ERP 0.099 kW Vertical - DA
Elev: 250 meters ~ RCAGL: 40 meters ~ RCAMSL: 290 meters
Overall tower height: 55 meters AGL ~ ASR: None (no airports)
NAD83 Latitude: 43° 11' 35.2" NL ~ Longitude: 73° 45' 23.4" WL
No nearby AM stations.
Existing tower.
Antenna: Nicom BKY-3 (vertical polarization) – 1 section

ComStudy 2.2 search of channel 242 (96.3 MHz Class D) at 43-11-35.2 N, 73-45-23.4 W.

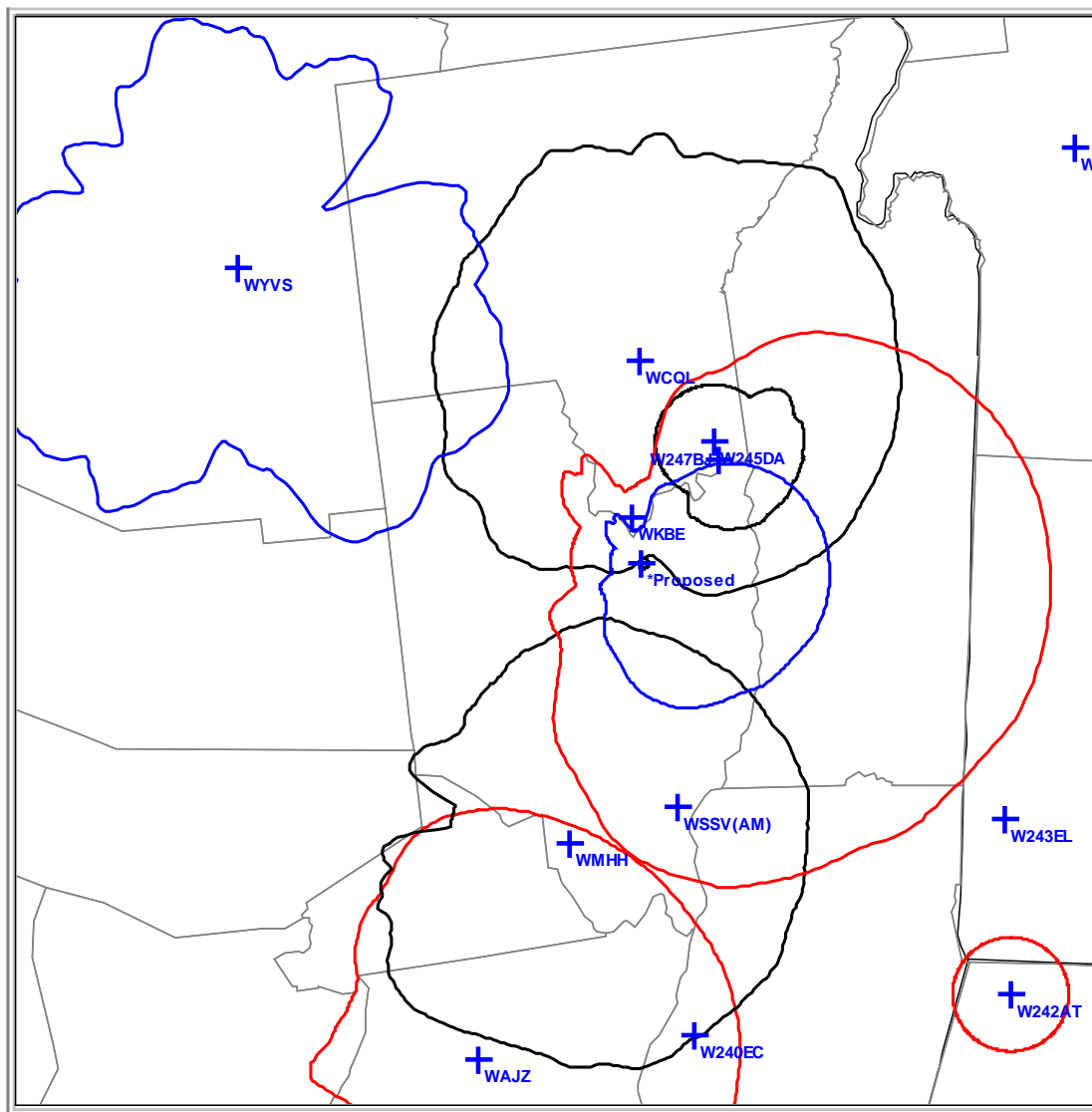
CALL	CITY	ST	CHN	CL	DIST	SEP	BRNG	CLEARANCE
WKBE	CORINTH	NY	296	A	5.84	10.00	348.2	-4.2
>> ERP < 100 watts.								
WCQL	QUEENSBURY	NY	240	A	25.21	31.00	359.3	CLEAR
WAJZ	VOORHEESVILLE	NY	242	A	64.98	115.00	197.9	0.18 dB
WMHH	CLIFTON PARK	NY	244	A	35.97	31.00	194.0	4.36 dB
W242AT	WILLIAMSTOWN	MA	242	D	70.13	0.00	139.8	6.69 dB
W245DA	SOUTH GLENS FALLS	NY	245	D	17.47	0.00	30.1	8.36 dB
WYVS	SPECULATOR	NY	243	A	61.24	72.00	307.2	9.70 dB
W243EL	BENNINGTON	VT	243	D	54.63	0.00	125.5	13.99 dB
WFYX	WALPOLE	NH	242	A	107.81	115.00	92.9	14.28 dB
WOUR	UTICA	NY	245	B	115.77	69.00	267.9	22.91 dB
W242AG	QUECHEE	VT	242	D	124.23	0.00	65.1	22.94 dB
W240EC	ALBANY	NY	240	D	59.13	0.00	173.8	24.81 dB
WDEV- FM	WARREN	VT	241	C3	123.39	89.00	32.4	26.68 dB
WTIC- FM	HARTFORD	CT	243	B	175.95	113.00	153.4	28.95 dB
WSRS	WORCESTER	MA	241	B	180.69	113.00	122.4	30.02 dB
WODZ- FM	ROME	NY	241	B1	115.82	96.00	267.8	32.10 dB
W242AZ	KEENE VALLEY	NY	242	D	110.64	0.00	358.6	33.98 dB
WBEC- FM	PITTSFIELD	MA	240	A	94.93	31.00	156.0	34.21 dB
WPEL- FM	MONTROSE	PA	243	B	228.25	113.00	230.0	36.62 dB
WTSA- FM	BRATTLEBORO	VT	244	A	99.11	31.00	109.6	36.31 dB
WFVR- LP	SOUTH ROYALTON	VT	243	LP100	121.39	56.00	54.7	37.35 dB
WXNY- FM	NEW YORK	NY	242	B	272.21	178.00	184.1	37.20 dB
W243DY	ROME	NY	243	D	115.42	0.00	267.7	39.95 dB



Azim	Rel.FS	ERP [W]	dBk	Azim	Rel.FS	ERP [W]	dBk	Azim	Rel.FS	ERP [W]	dBk	Azim	Rel.FS	ERP [W]	dBk
0.0	0.318	10.011	-19.995	90.0	0.982	95.468	-10.201	180.0	0.590	34.462	-14.627	270.0	0.230	5.237	-22.809
5.0	0.353	12.336	-19.088	95.0	0.997	98.407	-10.070	185.0	0.540	28.868	-15.396	275.0	0.230	5.237	-22.809
10.0	0.392	15.213	-18.178	100.0	1.000	99.000	-10.044	190.0	0.494	24.160	-16.169	280.0	0.230	5.237	-22.809
15.0	0.432	18.476	-17.334	105.0	1.000	99.000	-10.044	195.0	0.449	19.958	-16.999	285.0	0.230	5.237	-22.809
20.0	0.476	22.431	-16.492	110.0	1.000	99.000	-10.044	200.0	0.408	16.480	-17.830	290.0	0.230	5.237	-22.809
25.0	0.521	26.873	-15.707	115.0	1.000	99.000	-10.044	205.0	0.368	13.407	-18.727	295.0	0.230	5.237	-22.809
30.0	0.570	32.165	-14.926	120.0	0.988	96.638	-10.149	210.0	0.332	10.912	-19.621	300.0	0.230	5.237	-22.809
35.0	0.620	38.056	-14.196	125.0	0.973	93.726	-10.281	215.0	0.297	8.733	-20.589	305.0	0.230	5.237	-22.809
40.0	0.670	44.441	-13.522	130.0	0.954	90.101	-10.453	220.0	0.274	7.433	-21.289	310.0	0.226	5.057	-22.961
45.0	0.720	51.322	-12.897	135.0	0.934	86.363	-10.637	225.0	0.254	6.387	-21.947	315.0	0.221	4.835	-23.156
50.0	0.762	57.484	-12.405	140.0	0.910	81.982	-10.863	230.0	0.238	5.608	-22.512	320.0	0.220	4.792	-23.195
55.0	0.802	63.677	-11.960	145.0	0.885	77.539	-11.105	235.0	0.223	4.923	-23.078	325.0	0.220	4.792	-23.195
60.0	0.838	69.522	-11.579	150.0	0.852	71.864	-11.435	240.0	0.220	4.792	-23.195	330.0	0.220	4.792	-23.195
65.0	0.873	75.451	-11.223	155.0	0.817	66.081	-11.799	245.0	0.220	4.792	-23.195	335.0	0.220	4.792	-23.195
70.0	0.900	80.190	-10.959	160.0	0.778	59.923	-12.224	250.0	0.220	4.792	-23.195	340.0	0.232	5.329	-22.734
75.0	0.925	84.707	-10.721	165.0	0.738	53.920	-12.683	255.0	0.220	4.792	-23.195	345.0	0.247	6.040	-22.190
80.0	0.946	88.597	-10.526	170.0	0.690	47.134	-13.267	260.0	0.224	4.967	-23.039	350.0	0.266	7.005	-21.546
85.0	0.966	92.382	-10.344	175.0	0.640	40.550	-13.920	265.0	0.229	5.192	-22.847	355.0	0.286	8.098	-20.916

Additional radial: 106 degrees = 1.000 field value.

§74.1204 Contour Protection

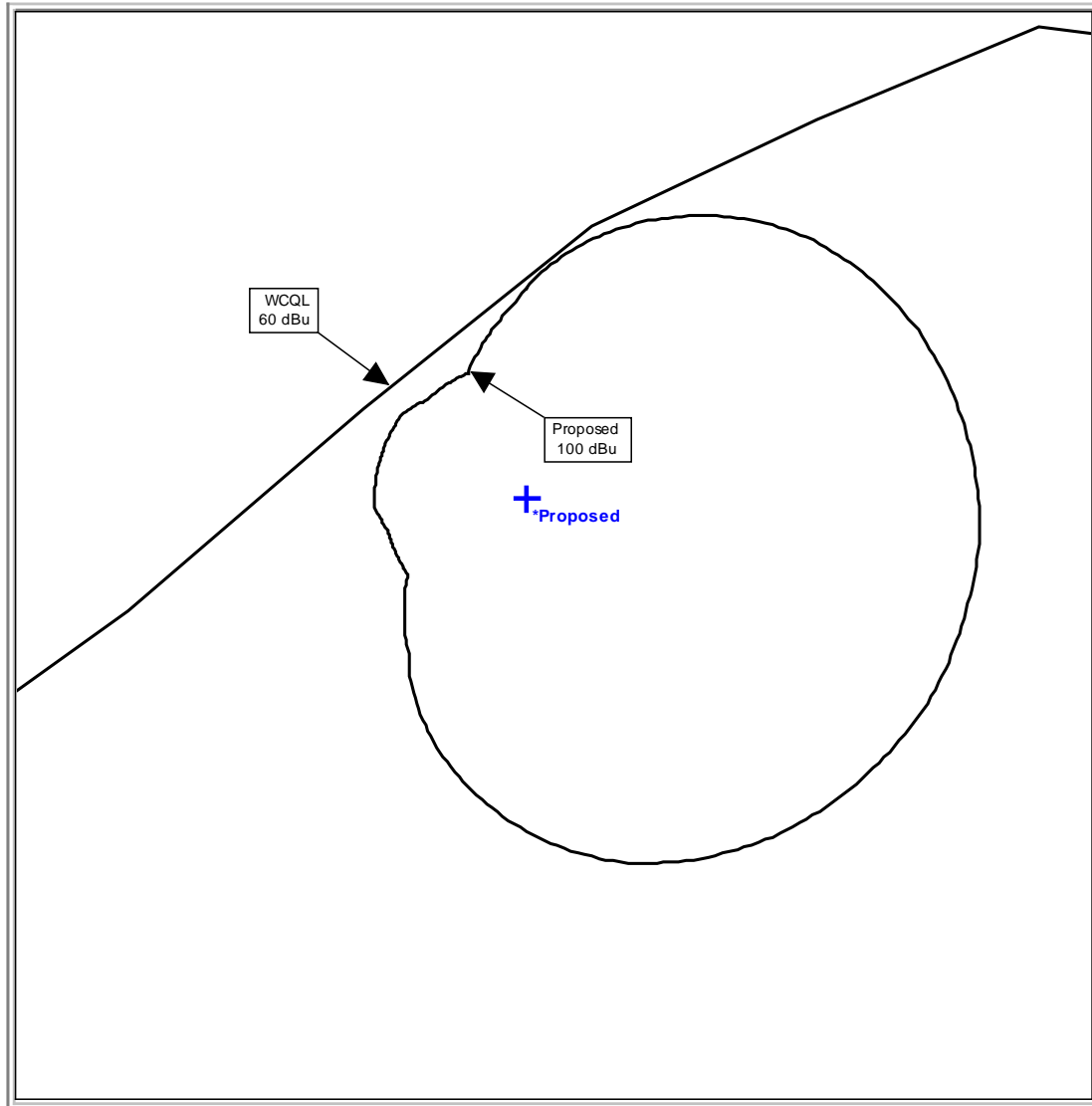


Red - CoChannel | Blue - First Adj. | Black - Second/Third Adj

Map Scale: 1:732231 1 cm = 7.32 km V/H Size: 135.11 x 130.51 km

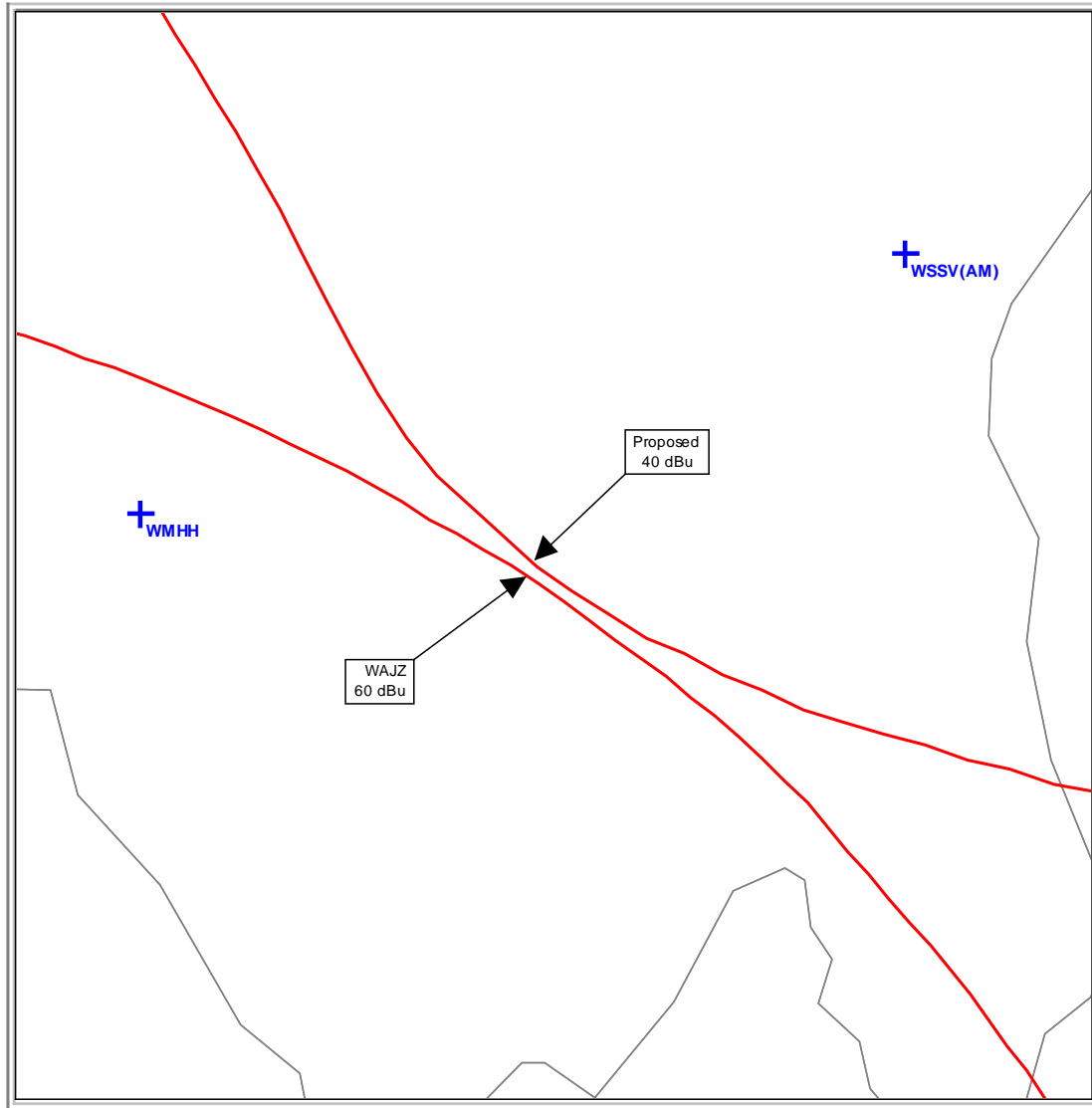
See next maps for close-up details of protection to WCQL and WAJZ.

§74.1204 Contour Protection vs WCQL



Red - CoChannel | Blue - First Adj. | Black - Second/Third Adj

§74.1204 Contour Protection vs WAJZ



Red - CoChannel | Blue - First Adj. | Black - Second/Third Adj.

REQUEST FOR §74.1233(A)(i)(a)(2) HANDLING
NON-ADJACENT CHANNEL

W247BJ
Saratoga Springs, New York
Channel 242D (96.3 MHz)

§74.1233(A)(i)(a)(2) permits an FM Translator to change perform a remedial same-band change to any channel upon a showing of interference to or from any other broadcast station.

In the instant case, first-adjacent channel station WZRT, Rutland, Vermont (Facility ID No. 25741) on Channel 246C2 has filed a modification (File No. 0000214967) to relocate to a different site and to increase their effective radiated power from 1.15 kW to 6.3 kW into a nondirectional antenna.

As a result of the instant application, existing overlap from the WZRT 54 dBu interfering contour is substantially increased. In addition, the modification of WZRT has resulted in new overlap of the W247BJ 60 dBu service and 54 dBu interfering contours into the 60 dBu service contour of the WZRT construction permit site.

To address this interference, the applicant is requesting a minor site change as well as a change from channel 247D to non-adjacent channel 242D.

As the modification of WZRT will result in harmful interference from W247BJ, the applicant is requesting this remedial non-adjacent channel change, pursuant to §74.1233(A)(i)(a)(2) to address the eventual increase in interference.

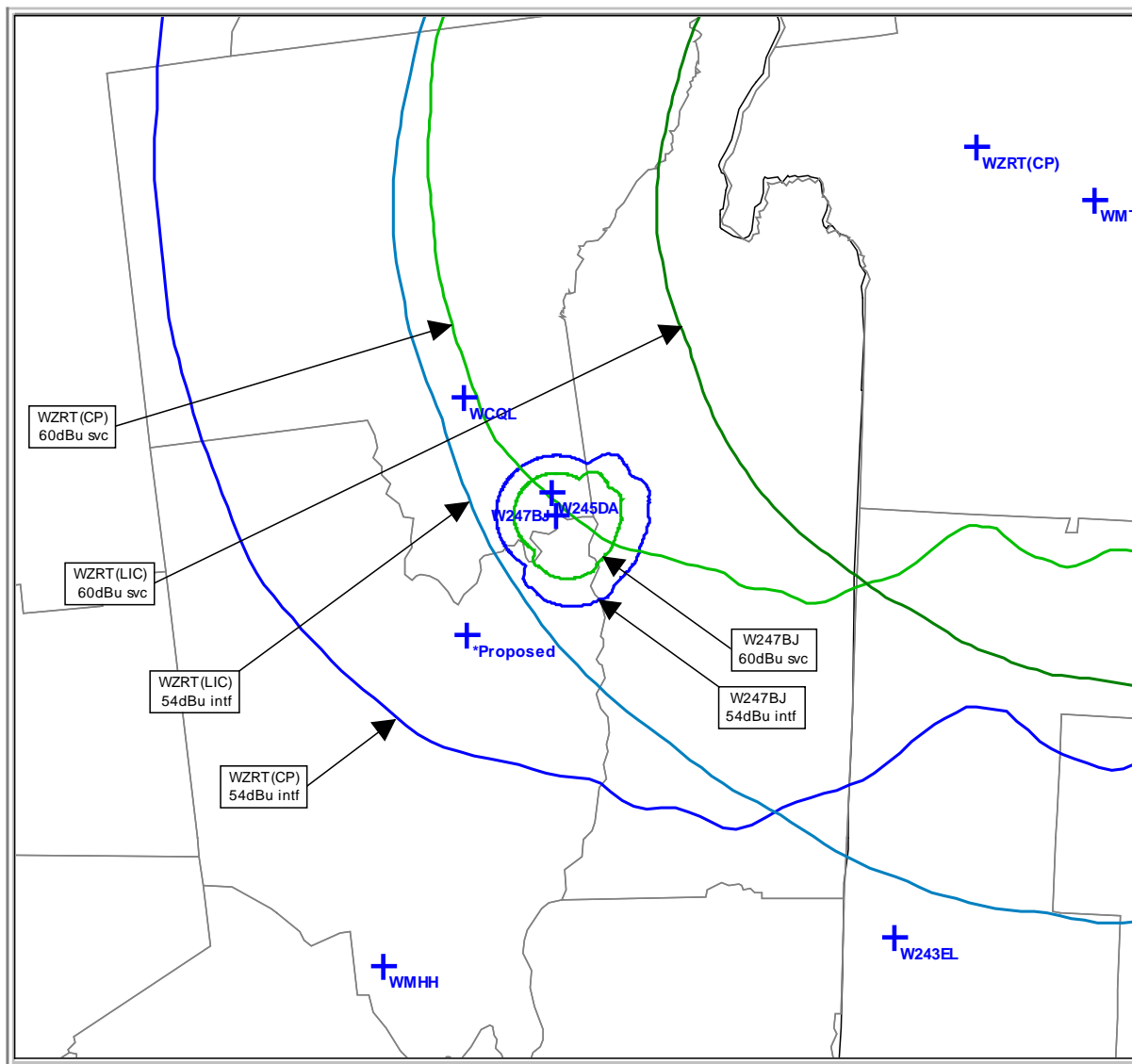
Prepared by,

/S/

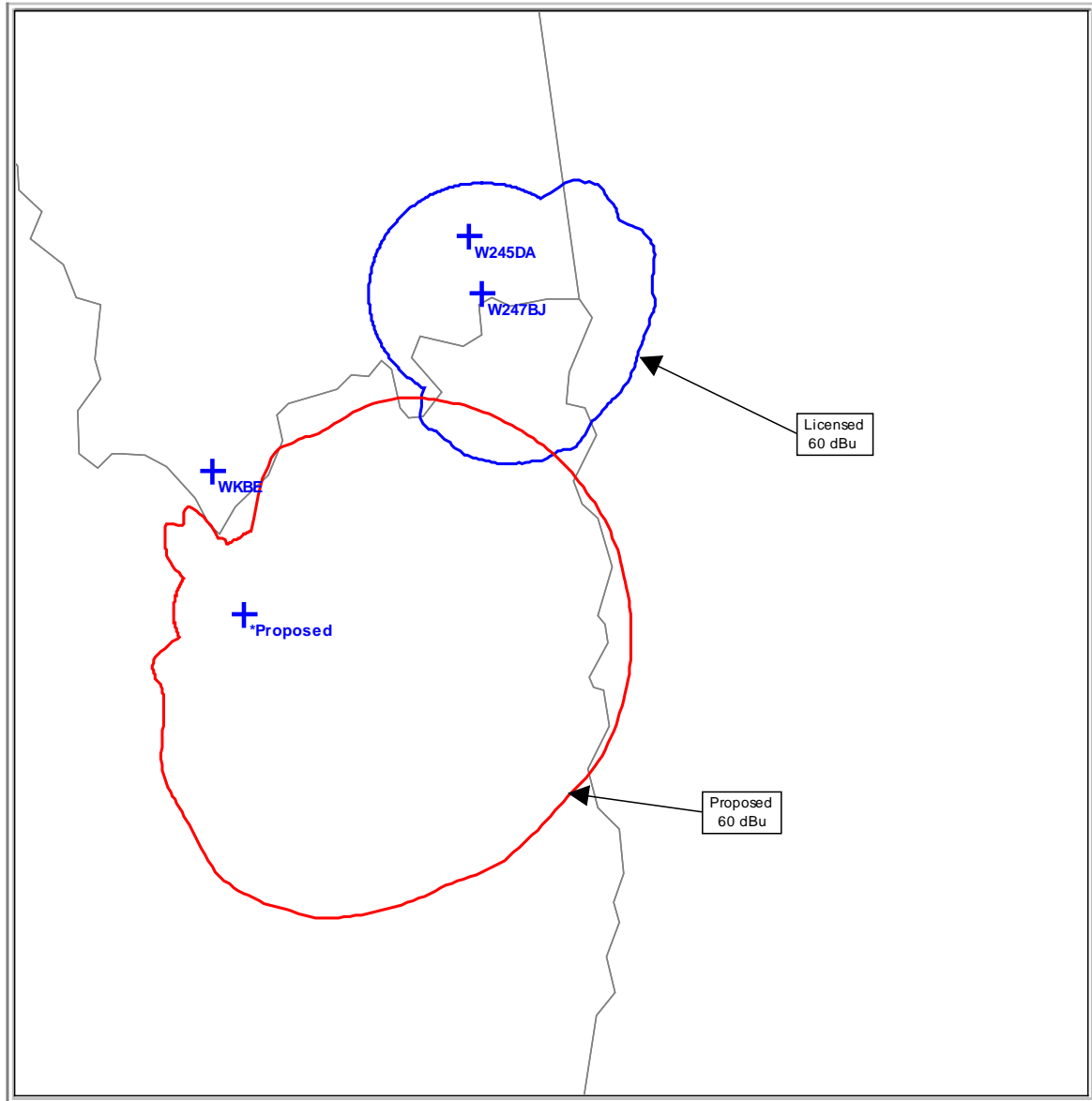
Michelle Bradley, CBT
REC Networks

August 23, 2023

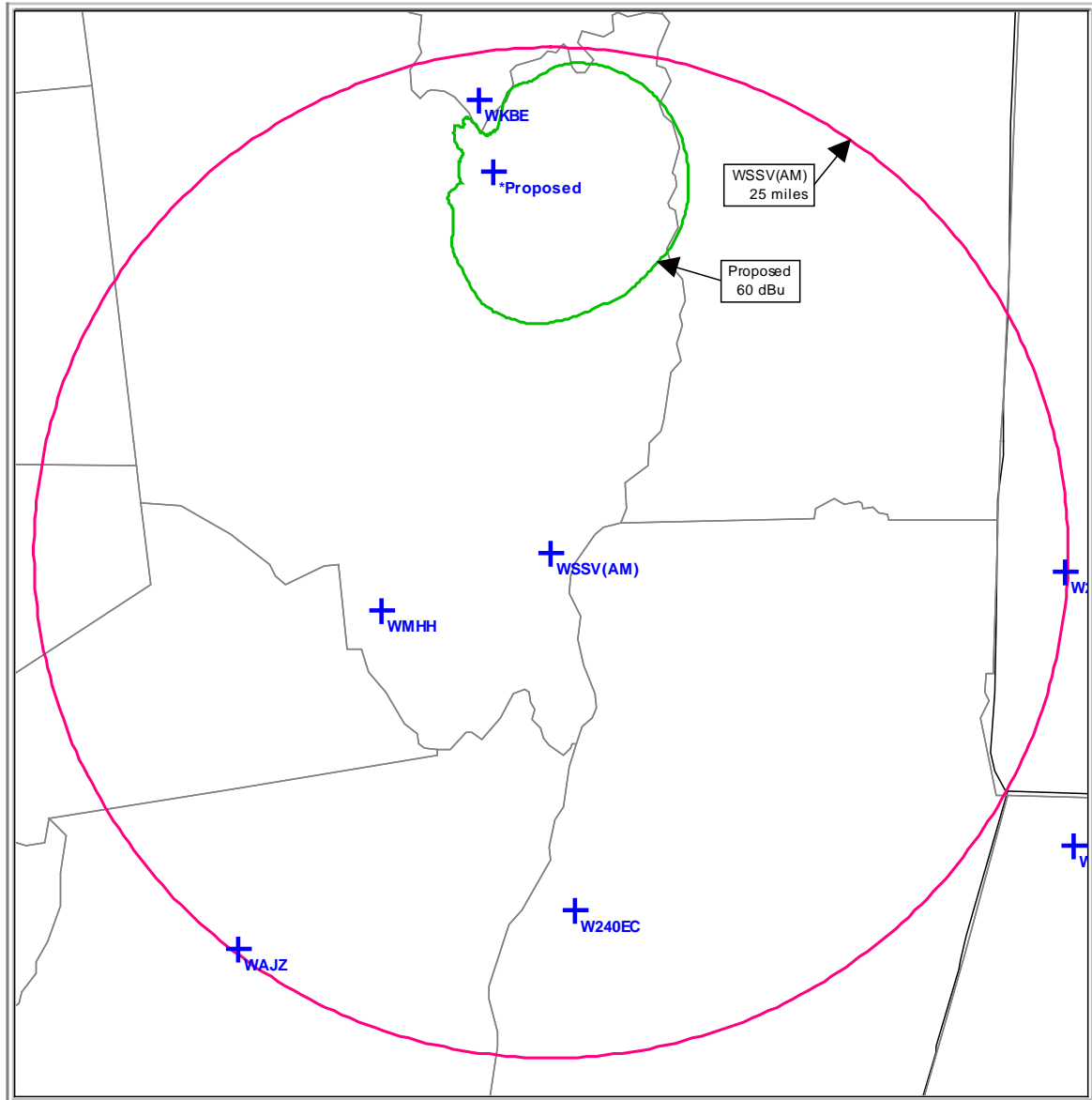
W247BJ Current Interference



Minor Modification



Fill In: WSSV(AM)



NEPA COMPLIANCE

W247BJ
Glens Falls, New York
Channel 242D (96.3 MHz)

Utilizing the Commission's FM MODEL software:

The existing station on this tower, WSSK operates 0.05 kW, vertical only at 52 meters above ground level into a single-bay EPA-1 type antenna. The peak power density is measured at $0.636 \mu\text{W}/\text{cm}^2$ at 11.4 meters from the tower base.

The instant application on this tower is proposed to operate 0.099 kW, vertical only at 40 meters above ground level into a single-bay EPA-1 type antenna. The proposed facility will contribute an additional power density of $2.183 \mu\text{W}/\text{cm}^2$ at 8.8 meters from the tower base.

Therefore, the peak power density from this tower site does not exceed the general population/controlled exposure guideline of $200 \mu\text{W}/\text{cm}^2$.

Prepared by

/S/
Michelle Bradley, CBT
REC Networks

August 23, 2023