

# LEGAL DESCRIPTION

PART OF THE NW 1/4 OF THE SE 1/4 OF SECTION 36, T16N, R12E OF THE 6th P.M., DOUGLAS COUNTY, NEBRASKA.

I HEREBY CERTIFY THAT THIS SURVEY WAS MADE BY ME OR UNDER MY DIRECT PERSONAL SUPERVISION AND THAT I AM A DULY REGISTERED LAND SURVEYOR UNDER THE LAWS OF THE STATE OF NEBRASKA.

## TOWER LOCATION INFORMATION

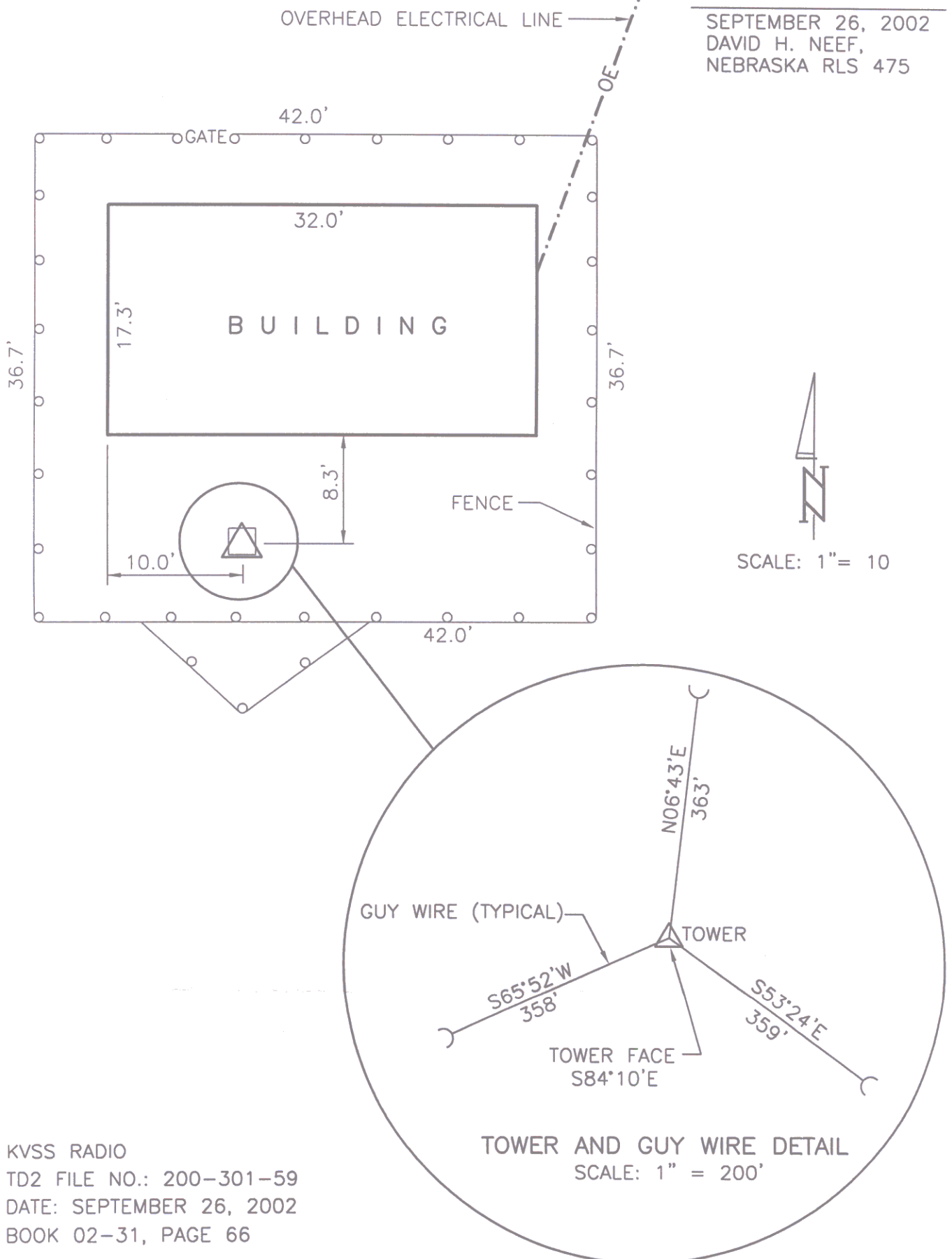
LATITUDE OF TOWER 41°18'46.8" (N) NAD 1983  
LONGITUDE OF TOWER 96°00'38.2" (W) NAD 1983  
GROUND ELEVATION AT TOWER 1154 (NAVD 1988)

### NOTE

BEARINGS SHOWN HEREON WERE CALCULATED FROM GPS OBSERVATIONS.



SEPTEMBER 26, 2002  
DAVID H. NEEF,  
NEBRASKA RLS 475



KVSS RADIO  
TD2 FILE NO.: 200-301-59  
DATE: SEPTEMBER 26, 2002  
BOOK 02-31, PAGE 66