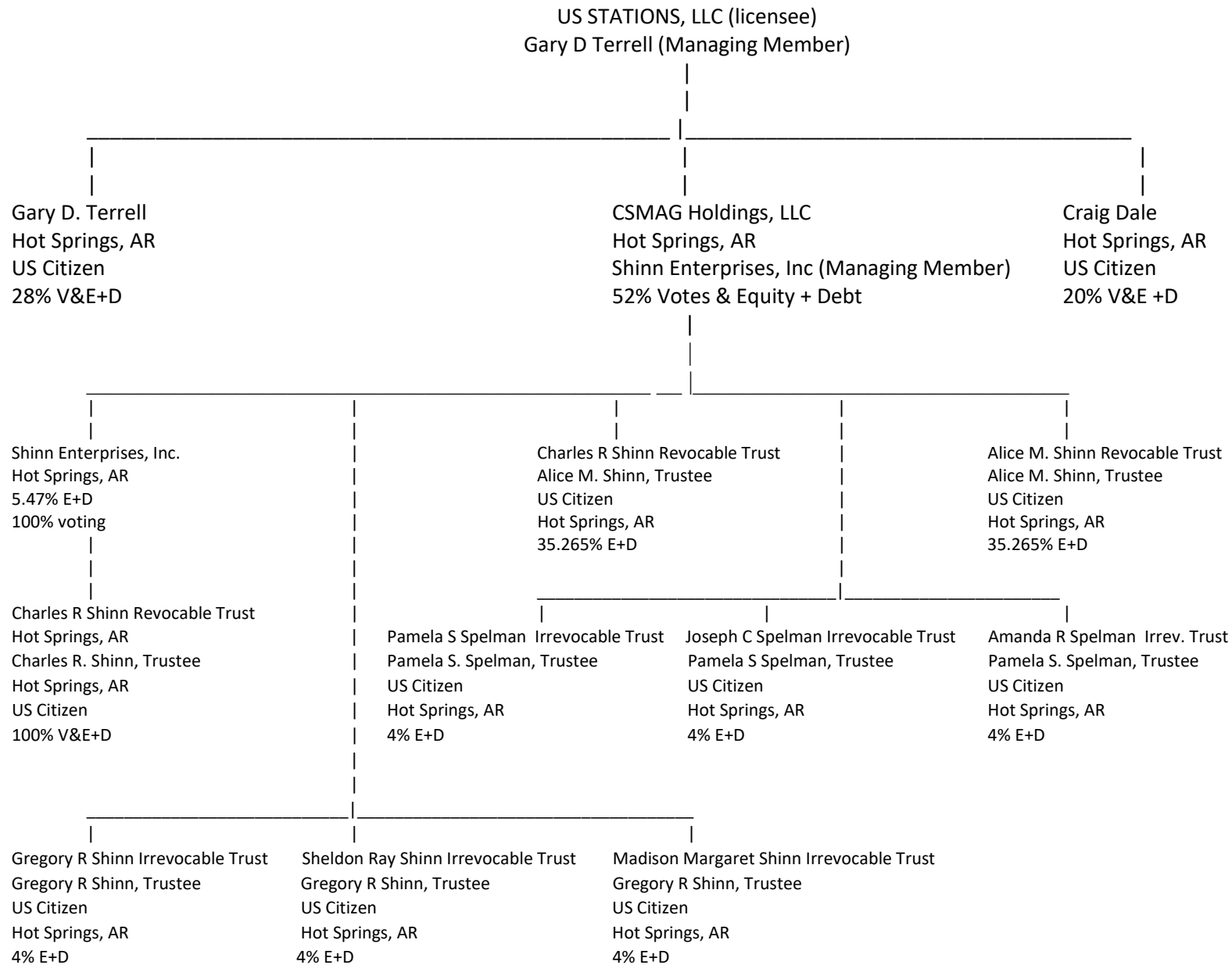
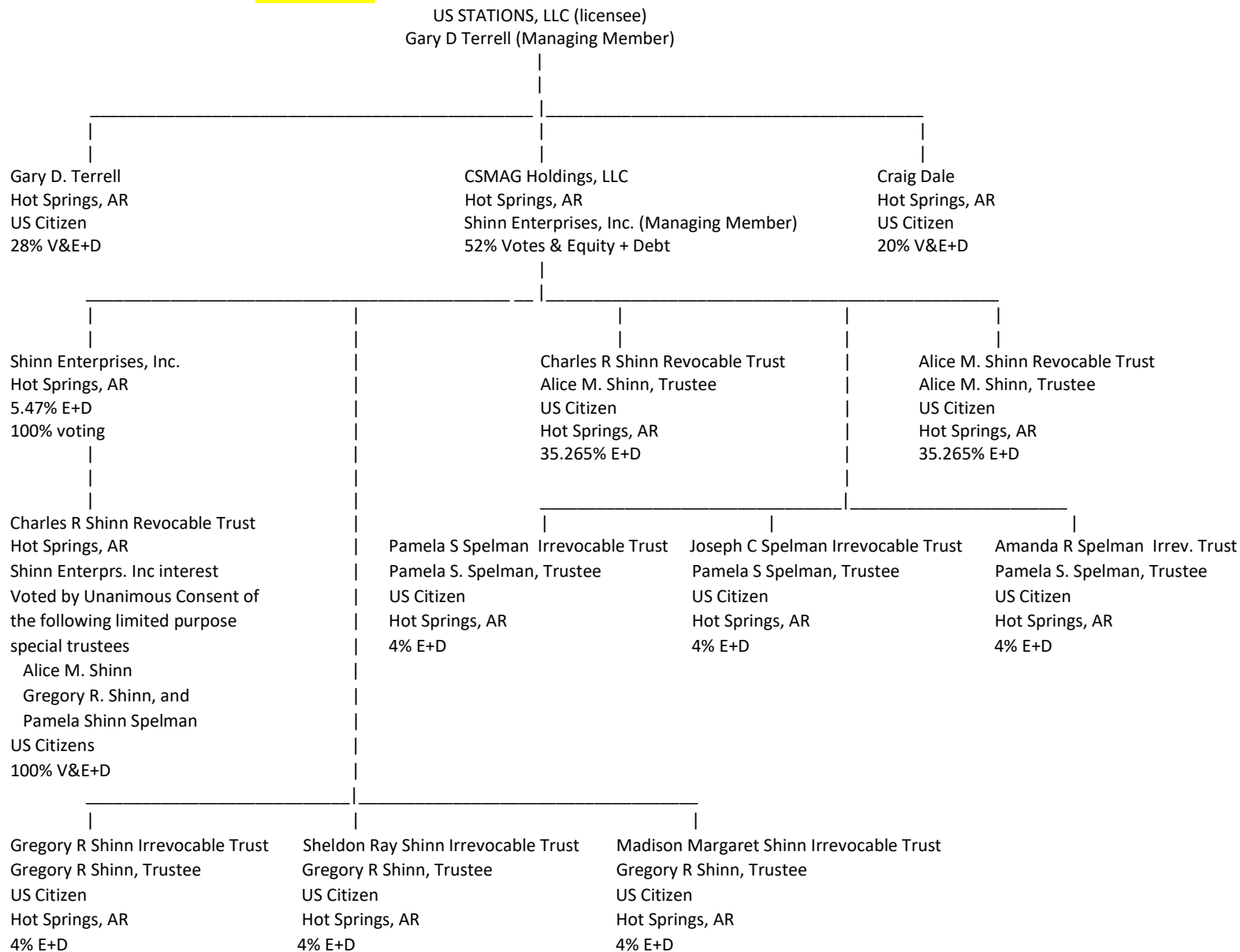


BEFORE TRANSFER OF CONTROL



AFTER TRANSFER OF CONTROL



Officers of Shinn Enterprises, Inc.
Gregory R. Shinn, President
Pamela Shinn Spelman, Vice-President and Treasurer
Alice M Shinn, Secretary

Charles R Shinn Revocable Trust

Grantor: Charles R. Shinn

Successor Trustee: Alice M. Shinn: widowed spouse of grantor

Special Trustees: Gregory R Shinn, Pamela Shinn Spelman children of grantor; Alice M. Shinn widowed spouse of grantor

Successor Beneficiary: Alice M. Shinn: widowed spouse of grantor

The Special Trustees are the only parties who hold the power to vote the interests of the Trust with respect to matters concerning USMag Holdings, LLC.

The Special Trustees have the sole power to sell the Trust's ownership interest in Shinn Enterprises, Inc.

This trust became irrevocable at Charles R Shinn's death: no party has the power to revoke the trust at will

No person has the power to replace the Trustees at will. The Trustees may not be replaced without cause, typically only pursuant to Court order

Alice M Shinn Revocable Trust

Grantor: Alice M Shinn

Trustee: Alice M. Shinn

Beneficiary: Alice M. Shinn

The Trustee is the only party who holds the power to vote the interests of the Trust. However, this trust has no power to vote matters concerning the control of CSMag Holdings, LLC, which is controlled by its LLC Managing Member, Shinn Enterprises, Inc., which is in turn controlled by the Special Trustees of the Charles R Shinn Revocable Trust.

The Trustee has the sole power to sell the trust's ownership interest in CSMAG Holdings, LLC

Only Alice M Shinn has the power to revoke the trust.

No person has the power to replace the Trustee at will. The Trustee may not be replaced without cause, typically only pursuant to Court order

Gregory R. Shinn Irrevocable Trust

Grantor: 2% from Charles R Shinn Revocable Trust

Grantor: 2% from Alice M Shinn Revocable Trust

Trustee: Gregory R. Shinn, son of grantors Charles R and Alice M Shinn

Beneficiary: Gregory R Shinn, son of grantors Charles R and Alice M Shinn

The Trustee is the only party who holds the power to vote the interests of the Trust. However, this trust has no power to vote matters concerning the control of CSMag Holdings, LLC, which is controlled by its LLC Managing Member, Shinn Enterprises, Inc., which is in turn controlled by the Special Trustees of the Charles R Shinn Revocable Trust.

The Trustee has the sole power to sell the trust's interest in CSMAG Holdings, LLC

This trust is irrevocable: no party has the power to revoke the trust at will

No person has the power to replace the Trustee at will. The Trustee may not be replaced without cause, typically only pursuant to Court order.

Sheldon Ray Shinn Irrevocable Trust

Grantor: 2% from Charles R Shinn Revocable Trust

Grantor: 2% from Alice M Shinn Revocable Trust

Trustee: Gregory R. Shinn, son of grantors Charles R and Alice M Shinn

Beneficiary: Sheldon Ray Shinn: son of trustee Gregory R. Shinn; grandson of grantors Charles R and Alice M Shinn

The Trustee is the only party who holds the power to vote the interests of the Trust. However, this trust has no power to vote matters concerning the control of CSMag Holdings, LLC, which is controlled by its LLC Managing Member, Shinn Enterprises, Inc., which is in turn controlled by the Special Trustees of the Charles R Shinn Revocable Trust.

The Trustee has the sole power to sell the trust's ownership interest in CSMAG Holdings, LLC

This trust is irrevocable: no party has the power to revoke the trust at will

No person has the power to replace the Trustee at will. The Trustee may not be replaced without cause, typically only pursuant to Court order.

Madison Margaret Shinn Irrevocable Trust

Grantor: 2% from Charles R Shinn Revocable Trust

Grantor: 2% from Alice M Shinn Revocable Trust

Trustee: Gregory R. Shinn, son of grantors Charles R and Alice M Shinn

Beneficiary: Madison Margaret Shinn: daughter of trustee Gregory R. Shinn; granddaughter of grantors Charles R and Alice M Shinn

The Trustee is the only party who holds the power to vote the interests of the Trust. However, this trust has no power to vote matters concerning the control of CSMag Holdings, LLC, which is controlled by its LLC Managing Member, Shinn Enterprises, Inc., which is in turn controlled by the Special Trustees of the Charles R Shinn Revocable Trust.

The Trustee has the sole power to sell the trust's ownership interest in CSMAG Holdings, LLC

This trust is irrevocable: no party has the power to revoke the trust at will

No person has the power to replace the Trustee at will. The Trustee may not be replaced without cause, typically only pursuant to Court order.

Pamela Shinn Spelman Irrevocable Trust

Grantor: 2% from Charles R Shinn Revocable Trust

Grantor: 2% from Alice M Shinn Revocable Trust

Trustee: Pamela Shinn Spelman, daughter of grantors Charles R and Alice M Shinn

Beneficiary: Pamela Shinn Spelman, daughter of grantors Charles R and Alice M Shinn

The Trustee is the only party who holds the power to vote the interests of the Trust. However, this trust has no power to vote matters concerning the control of CSMag Holdings, LLC, which is controlled by its LLC Managing Member, Shinn Enterprises, Inc., which is in turn controlled by the Special Trustees of the Charles R Shinn Revocable Trust.

The Trustee has the sole power to sell the trust's ownership interest in CSMAG Holdings, LLC

This trust is irrevocable: no party has the power to revoke the trust at will

No person has the power to replace the Trustee at will. The Trustee may not be replaced without cause, typically only pursuant to Court order.

Joseph Charlton Spelman Irrevocable Trust

Grantor: 2% from Charles R Shinn Revocable Trust

Grantor: 2% from Alice M Shinn Revocable Trust

Trustee: Pamela Shinn Spelman: daughter of grantors Charles R and Alice M Shinn

Beneficiary: Joseph Charlton Spelman: son of trustee Pamela Shinn Spelman; grandson of grantors Charles R and Alice M Shinn

The Trustee is the only party who holds the power to vote the interests of the Trust. However, this trust has no power to vote matters concerning the control of CSMag Holdings, LLC, which is controlled by its LLC Managing Member, Shinn Enterprises, Inc., which is in turn controlled by the Special Trustees of the Charles R Shinn Revocable Trust.

The Trustee has the sole power to sell the trust's ownership interest in CSMAG Holdings, LLC

This trust is irrevocable: no party has the power to revoke the trust at will

No person has the power to replace the Trustee at will. The Trustee may not be replaced without cause, typically only pursuant to Court order.

Amanda Renee Spelman Irrevocable Trust

Grantor: 2% from Charles R Shinn Revocable Trust

Grantor: 2% from Alice M Shinn Revocable Trust

Trustee: Pamela Shinn Spelman: daughter of grantors Charles R and Alice M Shinn

Beneficiary: Amanda Renee Spelman: daughter of trustee Pamela Shinn Spelman; granddaughter of grantors Charles R and Alice M Shinn

The Trustee is the only party who holds the power to vote the interests of the Trust. However, this trust has no power to vote matters concerning the control of CSMag Holdings, LLC, which is controlled by its LLC Managing Member, Shinn Enterprises, Inc., which is in turn controlled by the Special Trustees of the Charles R Shinn Revocable Trust.

The Trustee has the sole power to sell the trust's ownership interest in CSMAG Holdings, LLC

This trust is irrevocable: no party has the power to revoke the trust at will

No person has the power to replace the Trustee at will. The Trustee may not be replaced without cause, typically only pursuant to Court order.