

Radiofrequency Electromagnetic Field Exposure Report

KUDD American Fork, UT

FIN: 59034

105.1 MHz

February 9th, 2020

TABLE OF CONTENTS

Introduction	3
Equipment	3
Summary	3
Drawings	4
RF Exposure Measurement Area	4
Measurement Points	5
General Public and Occupational Exposure Measurement Points	5

Introduction

The permittee for the KUDD auxiliary construction permit (file number 0000085238) is Broadway Media LS, LLC. The Radio Frequency Exposure Study was completed on February 9th, 2020. Measurements were recorded at the facility using a Narda SRM 3000 instrument which properly analyzes and compensates for frequency dependent variables in the requirements of OET-65. Measurements were taken while slowly moving the instrument probe between approximately two and eight feet above ground, as well as side-to-side while walking to and from each measurement point. If an area had higher than average readings, further investigation was conducted to determine the extent of the area.

Equipment

- Narda SRM 3000
- SN: N-0010
- Firmware: SRM-FW V1.5.6

Summary

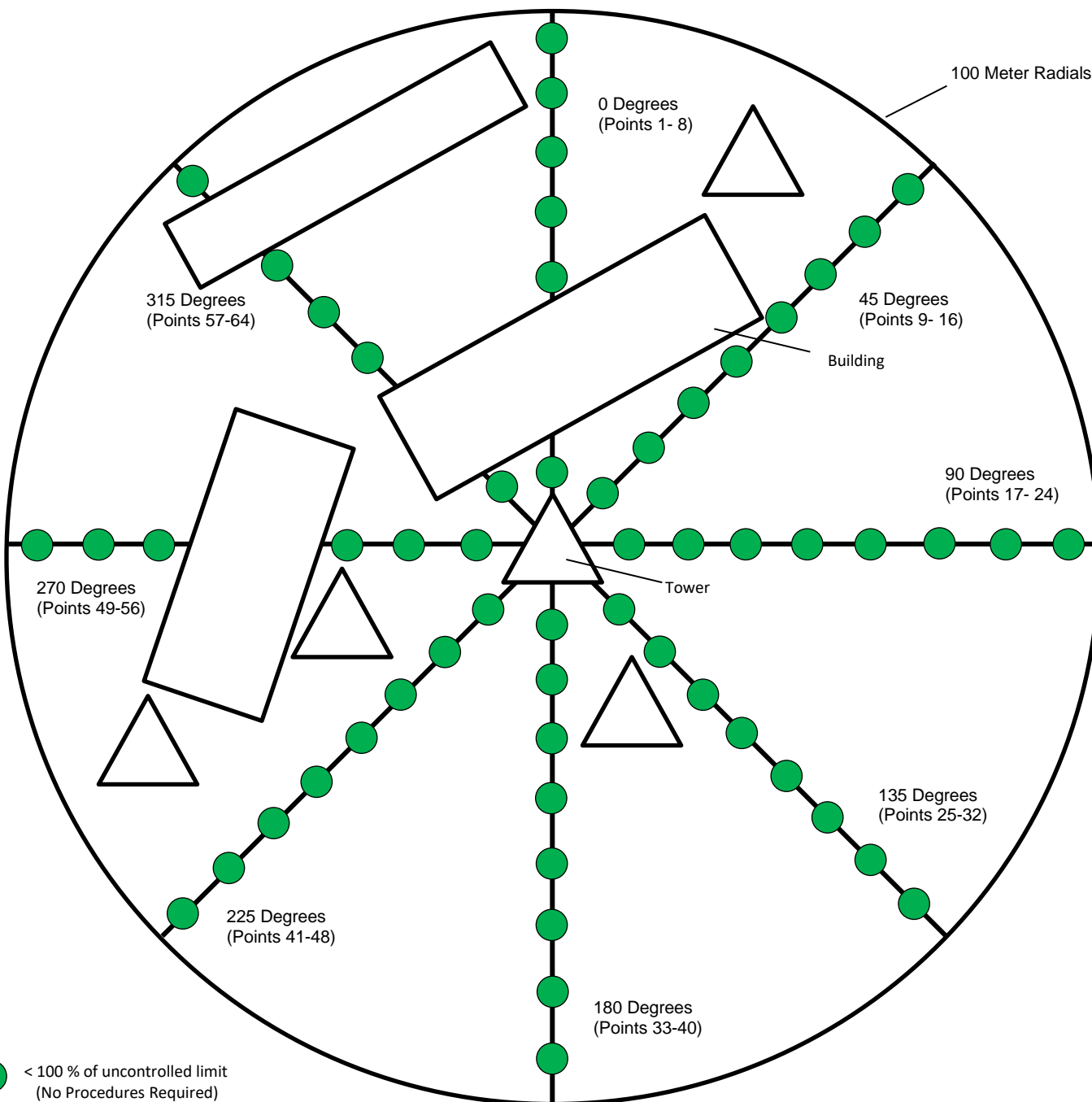
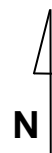
The KUDD auxiliary transmissions were confirmed to be operating at 100% ERP prior to recording measurements. Measurement points were recorded along eight equally spaced radials as well as throughout the accessible areas of the facility.

All measurement points and areas throughout the KUDD auxiliary facility were measured to be below 100% of the uncontrolled limits of OET-65. Therefore, the KUDD auxiliary facility fully complies with the FCC's maximum permissible radiofrequency electromagnetic exposure limits for controlled and uncontrolled environments.

Lastly, though the site will fully comply with the FCC's controlled and uncontrolled exposure limits, access to the site will be restricted and appropriately marked with signage. When it becomes necessary for workers to ascend the antenna structure, the permittee will reduce power or cease operation as necessary to protect persons having access to the site, tower or antenna from radiofrequency electromagnetic fields in excess of FCC guidelines.

Drawings

RF Exposure Measurement Area



- < 100 % of uncontrolled limit
(No Procedures Required)
- 100 – 499 % of uncontrolled limit
- 500 – 5000 % of uncontrolled limit
- > 5000 % of uncontrolled limit

Not to Scale

Measurement Points

General Public and Occupational Exposure Measurement Points

Point	Total General Public %	General Public % 105.1 MHz	Total Occupational %	Occupational % 105.1 MHz
1	33.21	0.40	6.64	0.08
2	33.21	0.40	6.64	0.08
3	33.21	0.40	6.64	0.08
4	33.21	0.40	6.64	0.08
5	37.85	0.38	7.57	0.08
6	37.85	0.38	7.57	0.08
7	37.85	0.38	7.57	0.08
8	37.85	0.38	7.57	0.08
9	58.83	0.21	11.77	0.04
10	58.83	0.21	11.77	0.04
11	48.13	0.56	9.63	0.11
12	48.13	0.56	9.63	0.11
13	48.13	0.56	9.63	0.11
14	40.23	0.74	8.05	0.15
15	40.23	0.74	8.05	0.15
16	33.52	0.24	6.70	0.05
17	33.52	0.24	6.70	0.05
18	45.81	0.90	9.16	0.18
19	47.66	0.65	9.53	0.13
20	47.66	0.65	9.53	0.13
21	61.33	0.46	12.27	0.09
22	50.99	1.40	10.20	0.28
23	50.99	1.40	10.20	0.28
24	50.99	1.40	10.20	0.28
25	28.81	0.17	5.76	0.03
26	28.81	0.17	5.76	0.03
27	53.83	1.31	10.77	0.26
28	53.83	1.31	10.77	0.26
29	47.30	1.05	9.46	0.21
30	47.30	1.05	9.46	0.21
31	47.30	1.05	9.46	0.21
32	57.72	0.07	11.54	0.01
33	57.72	0.07	11.54	0.01
34	57.72	0.07	11.54	0.01

SWE Services, LLC

35	91.80	0.82	18.36	0.16
36	44.09	1.15	8.82	0.23
37	44.09	1.15	8.82	0.23
38	44.09	1.15	8.82	0.23
39	44.09	1.15	8.82	0.23
40	20.95	0.20	4.19	0.04
41	20.95	0.20	4.19	0.04
42	20.95	0.20	4.19	0.04
43	20.95	0.20	4.19	0.04
44	18.58	0.09	3.72	0.02
45	18.58	0.09	3.72	0.02
46	18.58	0.09	3.72	0.02
47	18.58	0.09	3.72	0.02
48	18.58	0.09	3.72	0.02
49	38.85	0.08	7.77	0.02
50	38.85	0.08	7.77	0.02
51	33.21	0.07	6.64	0.01
52	20.94	0.05	4.19	0.01
53	18.59	0.04	3.72	0.01
54	44.07	0.08	8.81	0.02
55	50.97	0.09	10.19	0.02
56	11.09	1.1	2.22	0.22
57	11.09	1.3	2.22	0.26
58	17.07	0.08	3.41	0.02
59	13.46	0.09	2.69	0.02
60	13.46	0.09	2.69	0.02
61	33.24	0.07	6.65	0.01
62	37.82	0.06	7.56	0.01
63	18.56	0.05	3.71	0.01
64	17.07	1.01	3.41	0.20