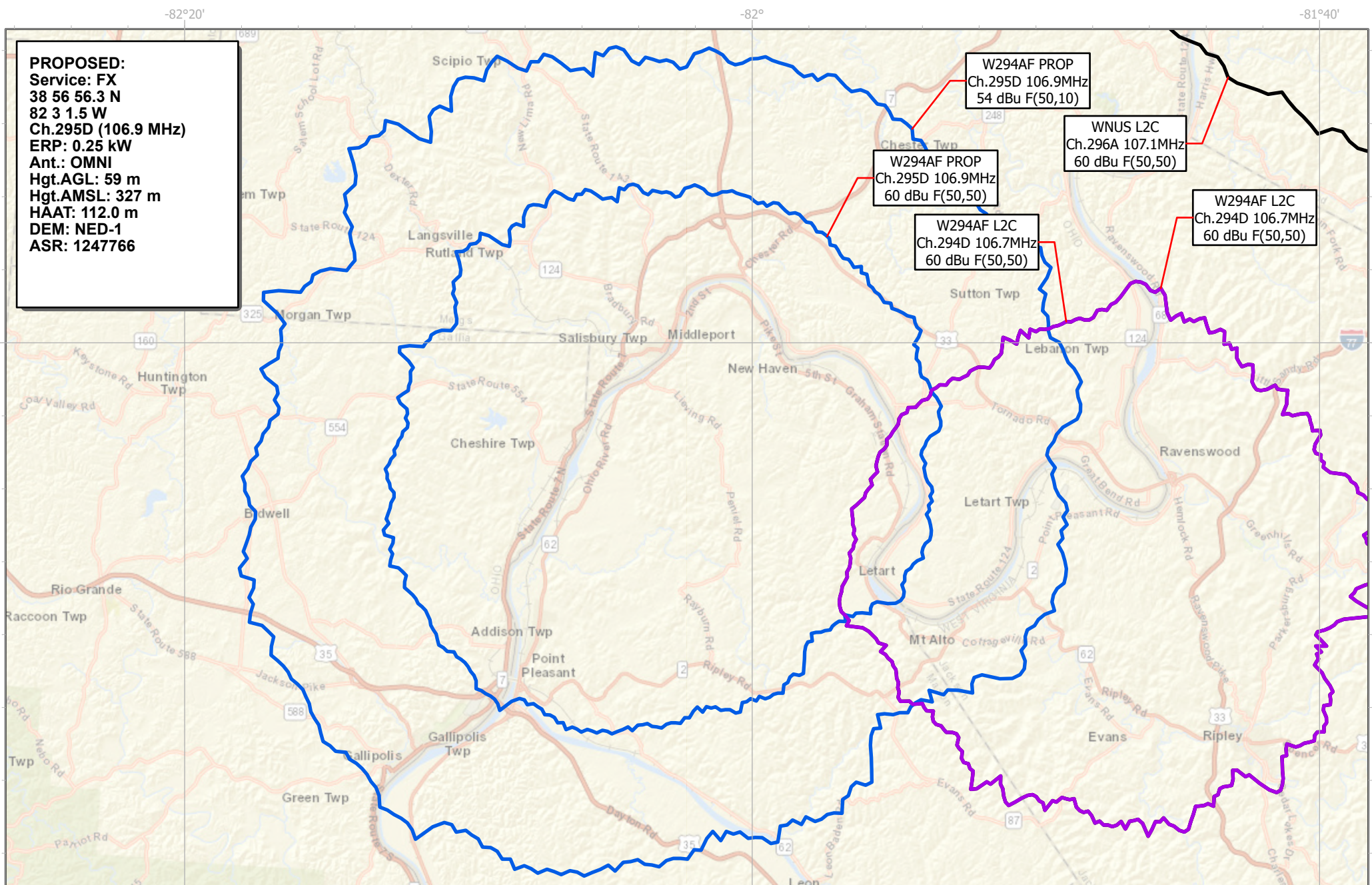


W294AF POINT PLEASANT, WV Proposed Channel 295D (106.9 MHz)
VANDALIA MEDIA PARTNERS, LLC - MINOR CHANGE

Co-channel and minor change showing.

Figure 1

Robert J. Robbins, Ph.D.
www.radiodataservices.com
radiodataservices@radiodataservices.com
(305) 234-9309



W294AF POINT PLEASANT, WV Proposed Channel 295D (106.9 MHz)
VANDALIA MEDIA PARTNERS, LLC - MINOR CHANGE

1st adjacent-channel showing.

0 3.25 6.5 13 Kilometers **Figure 2**

Robert J. Robbins, Ph.D.
www.radiodataservices.com
radiodataservices@radiodataservices.com
(305) 234-9309

PROPOSED:
Service: FX
38 56 56.3 N
82 3 1.5 W
Ch.295D (106.9 MHz)
ERP: 0.25 kW
Ant.: OMNI
Hgt.AGL: 59 m
Hgt.AMSL: 327 m
HAAT: 112.0 m
DEM: NED-1
ASR: 1247766

W294AF PROP
Ch.295D 106.9MHz
60 dBu F(50,50)

W294AF PROP
Ch.295D 106.9MHz
100 dBu F(50,10)

WAMX L2C
Ch.292B1 106.3MHz
57 dBu F(50,50)

WAMX L2C
Ch.292B1 106.3MHz
57 dBu F(50,50)

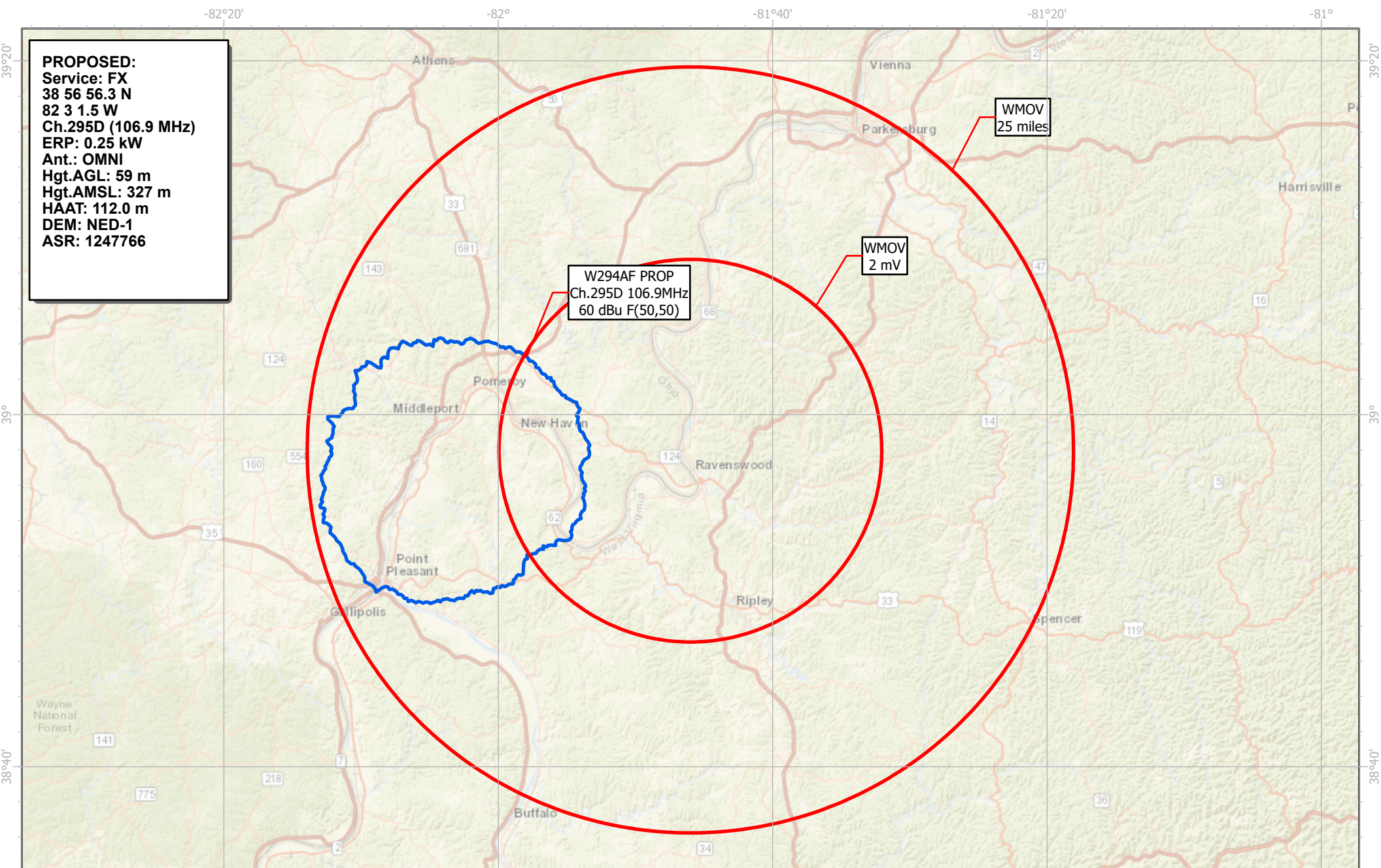
WKAZ-FM MOD
Ch.297B 107.3MHz
54 dBu F(50,50)

WKAZ-FM MOD
Ch.297B 107.3MHz
54 dBu F(50,50)

A number line representing distance in Kilometers. The line starts at 0 and ends at 13. Major tick marks are labeled at 0, 3.25, 6.5, and 13. There are 8 equal intervals between 0 and 13, each representing 1.625 Kilometers.

2nd and 3rd adjacent-channel showing.

Robert J. Robbins, Ph.D.
www.radiodataservices.com
radiodataservices@radiodataservices.com
(305) 234-9309



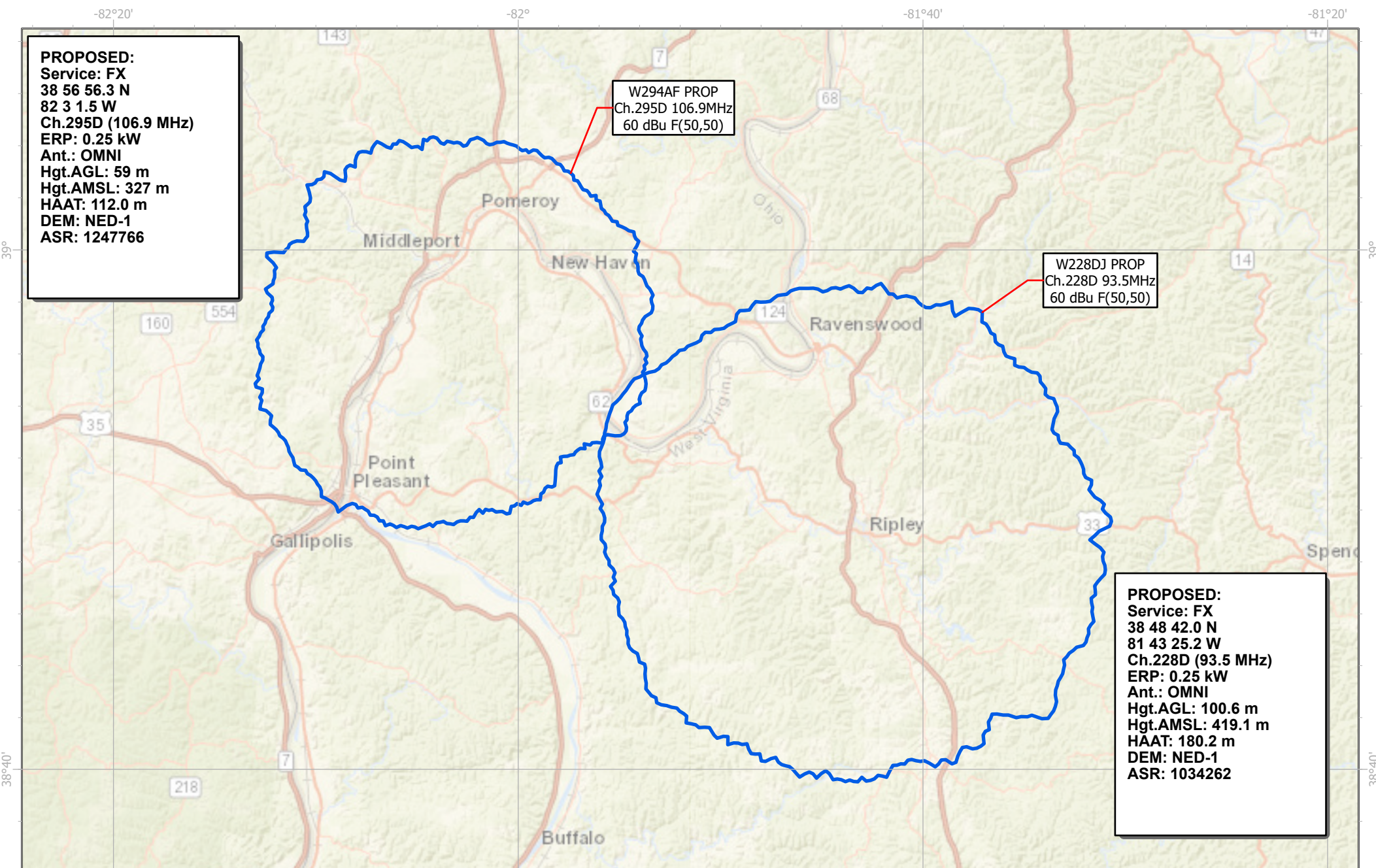
W294AF POINT PLEASANT, WV Proposed Channel 295D (106.9 MHz)
VANDALIA MEDIA PARTNERS, LLC - MINOR CHANGE

0 5 10 20 Kilometers

Figure 5

Fill-in translator with respect to primary station WMOV (AM).

Robert J. Robbins, Ph.D.
www.radiodataservices.com
radiodataservices@radiodataservices.com
(305) 234-9309



W294AF POINT PLEASANT, WV Proposed Channel 295D (106.9 MHz)
W228DJ RAVENSWOOD, WV Proposed Channel 228D (93.5 MHz)
VANDALIA MEDIA PARTNERS, LLC - MINOR CHANGE

0 4.5 9 18 Kilometers

Figure 4

No significant common overlap between proposed facilities both rebroadcasting WMOV. Applications to modify both W294AF and W22DJ are being filed contemporaneously.

Robert J. Robbins, Ph.D.
www.radiodataservices.com
radiodataservices@radiodataservices.com
(305) 234-9309

Table 1 - 74.1204(a) Channel Study**W294AF POINT PLEASANT, WV - VANDALIA MEDIA PARTNERS, LLC****MINOR CHANGE October 2022 (Ch.295D proposed)**

Chan	Class	Call Letters	Type	Status	City	State	Country	Owner	Bearing TO (deg)	Distance (km)	Req. Dist. (km)	Clearance (km)	Field Strength (dBu)	
292	B1	WAMX	FS	L-L2C	MILTON	WV	US	IHM LICENSES, LLC	195.7	51.1	32.6	18.5	46.7	
292	B1	WAMX	FM	L-L2C	MILTON	WV	US	IHM LICENSES, LLC	195.7	51.1	45.4	5.7	53.5	
294	D	W294AF	FX	L-L2C	RIPLEY	WV	US	VANDALIA MEDIA PAF	104.8	24.1	35.1	-11.0	50.9	(applicant)
294	L1	WEAK-LP	FL	L-L2C	ATHENS	OH	US	HOBBY RADIO, INC.	346.2	42.1	25.7	16.4	23.7	
294	D	W294CP	FX	L-L2C	HUNTINGTON	WV	US	BIG RIVER RADIO, INC.	207.5	66.3	32.8	33.4	24.1	
294	D	W294CL	FX	L-L2C	CHARLESTON	WV	US	WEST VIRGINIA RADIO	149.5	76.3	29.2	47.1	17.6	
294	D	W294CN	FX	L-L2C	NEW BOSTON	OH	US	MAILLET MEDIA, INC	253.3	86.1	37.7	48.4	21.7	
295	L1	WAXE-LP	FL	L-L2C	ST. ALBANS	WV	US	COAL MOUNTAIN BRO	167.6	62.0	51.4	10.7	14.9	
296	A	WNUS	FM	L-L2C	BELPRE	OH	US	IHM LICENSES, LLC	47.5	64.2	51.2	13.0	43.4	
296	A	WAWT	FM	L-MOD	IRONTON	OH	US	EDUCATIONAL MEDIA	228.0	70.5	41.8	28.7	31.8	
296	A	WAWT	FS	L-L2C	IRONTON	OH	US	EDUCATIONAL MEDIA	230.1	70.8	36.2	34.6	28.1	
297	B	WKAZ-FM	FM	L-MOD	MIAMI	WV	US	WEST VIRGINIA RADIO	148.5	87.9	70.5	17.4	45.8	

Terrain data DEM: NED-1

Table 2 - 74.1204(g) Channel Study
W294AF POINT PLEASANT, WV - VANDALIA MEDIA PARTNERS, LLC
MINOR CHANGE October 2022 (Ch.295D proposed)

Chan	Class	Call Letters	Type	Status	City	State	Country	Owner	Bearing TO (deg)	FCC Dist.(km)	Req. Dist. (km)	Clearance (km)
------	-------	-----------------	------	--------	------	-------	---------	-------	---------------------	------------------	--------------------	-------------------

**** No facilities or applications with less than 50 km clearance.**

Distance separations determined per §73.208(c)

Distance to Canadian border: 331 km.

The proposed antenna location is not within 320 kilometers of the common border between the United States and Canada or Mexico.

Radiofrequency Electromagnetic Exposure Analysis

Source	Height AGL(m)	Antenna type	Bays	Horizontal ERP (kw)	Vertical ERP (kw)	Power Density $\mu\text{W}/\text{cm}^2$ at 2 meters AGL				Distance to maximum PD (m)
						within 10 meters distance	% controlled environment limit (1000 $\mu\text{W}/\text{cm}^2$)	Max. PD	% uncontrolled environment limit (200 $\mu\text{W}/\text{cm}^2$)	
W294AF (Proposed)	59.0	BEXT TFC2K *	1	0.250	0.250	3.0	0.30%	3.10	1.55%	16.0
WJEH	66.2	ERI LPX-3E-HW *	3	4.100	4.100	38.4	3.84%	40.00	20.00%	18.0
						38.40	4.14%	40.00	21.55%	18.0

The proposed facility is excluded from environmental processing under 47. C.F.R. Section 1.1306 (i.e., The facility will not have a significant environmental impact and complies with the maximum permissible radiofrequency electromagnetic exposure limits for controlled and uncontrolled environments).

* EPA Type 1, single bay assumed (worst case)

Calculations made using FCC FMModel (Revised version)