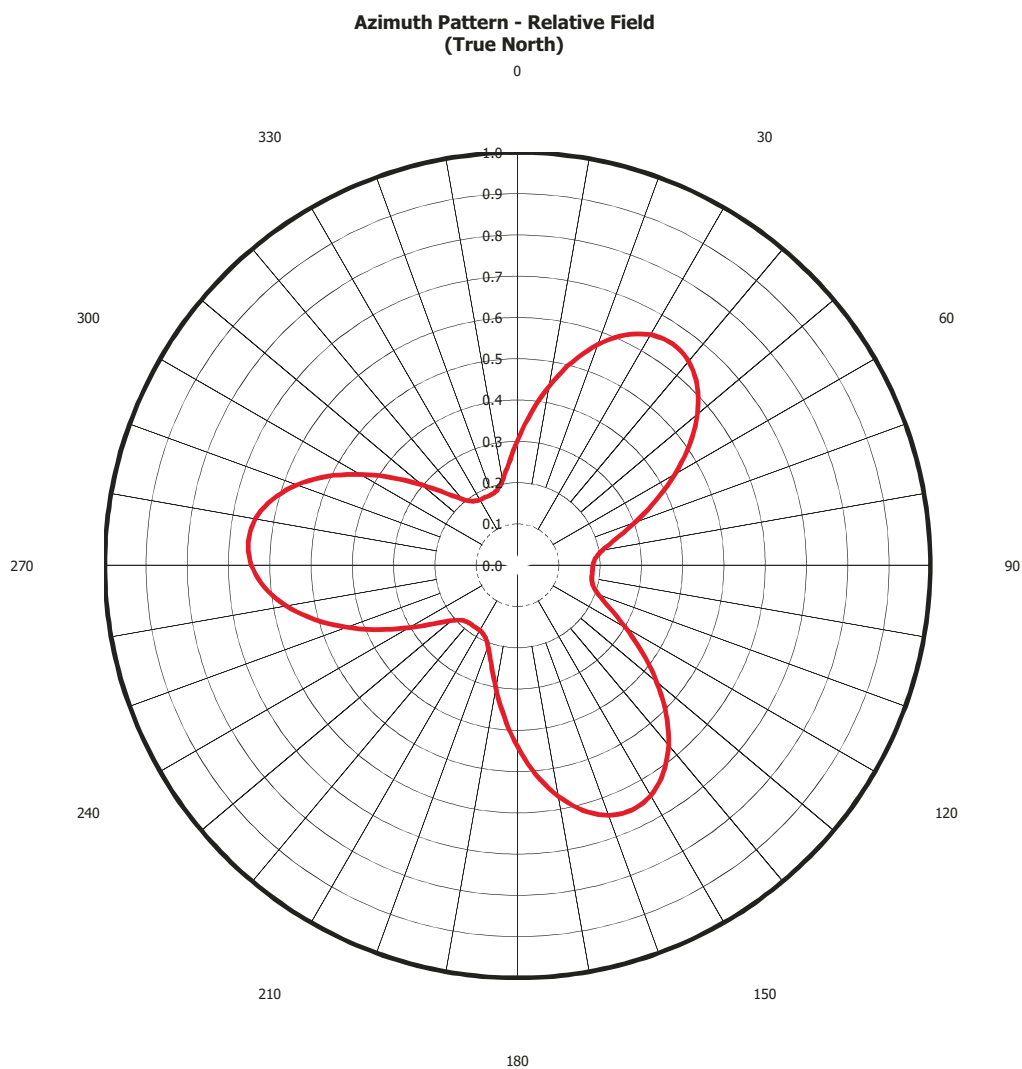


AZIMUTH PATTERN Horizontal Polarization

Proposal No.	C-70579-2
Date	2-Oct-17
Call Letters	WNYS
Channel	15
Frequency	479 MHz
Antenna Type	TFU-20DSC/VP-R T140 DC
Gain	1.45 (1.63dB)
	Calculated



AZIMUTH PATTERN Vertical Polarization

Proposal No.	C-70579-2
Date	2-Oct-17
Call Letters	WNYS
Channel	15
Frequency	479 MHz
Antenna Type	TFU-20DSC/VP-R T140 DC
Gain	2.33 (3.68dB)
	Calculated

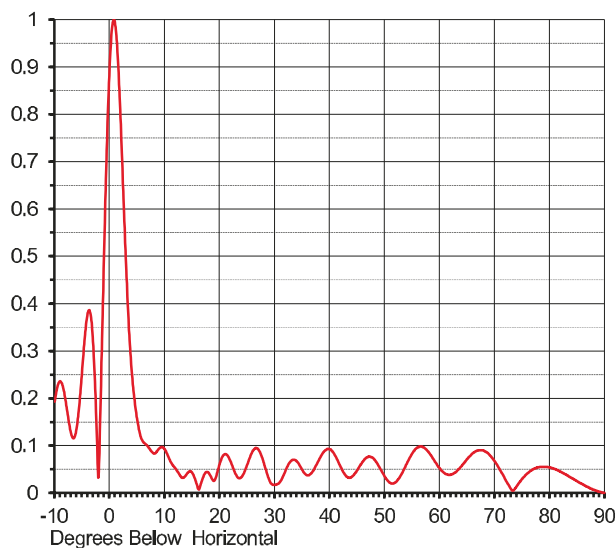
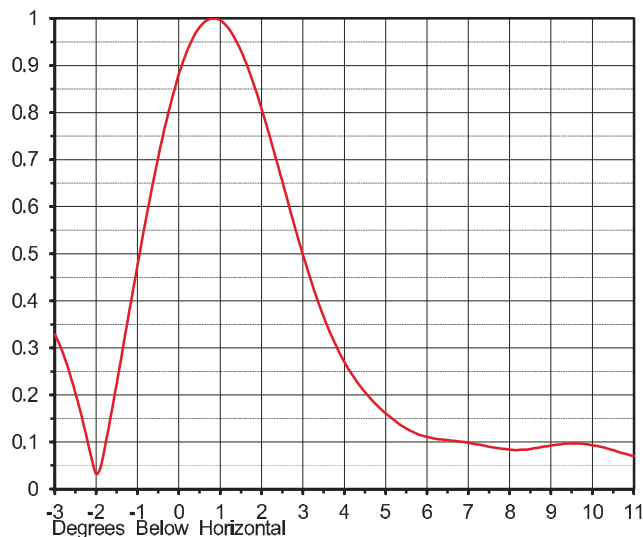


ELEVATION PATTERN

Proposal No.	C-70579-2
Date	2-Oct-17
Call Letters	WNYS
Channel	15
Frequency	479 MHz
Antenna Type	TFU-20DSC/VP-R T140 D

RMS Directivity at Main Lobe	17.0 (12.30 dB)
RMS Directivity at Horizontal	14.0 (11.46 dB)
	Calculated

Beam Tilt	0.75 deg
Pattern Number	20Q170075



Angle	Field
-10.0	0.193
-9.0	0.236
-8.0	0.193
-7.0	0.124
-6.0	0.139
-5.0	0.263
-4.0	0.380
-3.0	0.310
-2.0	0.044
-1.0	0.524
0.0	0.907
1.0	0.989
2.0	0.779
3.0	0.470
4.0	0.255
5.0	0.154
6.0	0.109
7.0	0.097
8.0	0.083
9.0	0.094