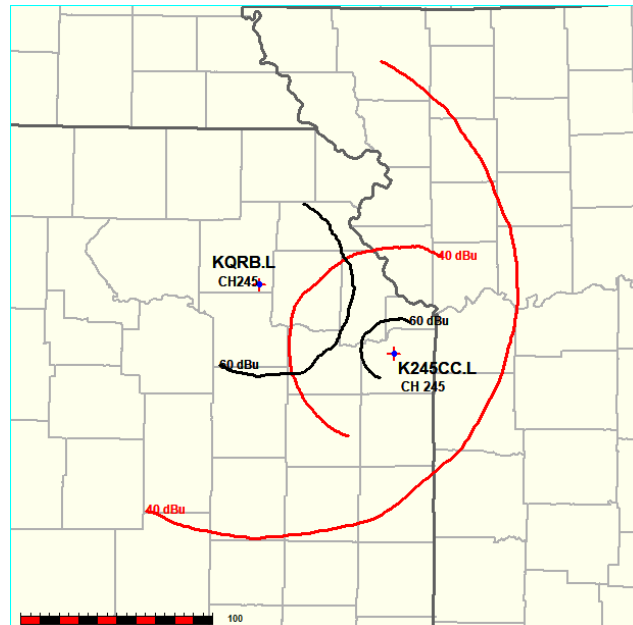


Call letters: K245CC
City of License: Olathe, KS
Channel: CH245D (96.9 MHz)
File No: BLFT-20170822AAN
Facility ID: 140359
Applicant: Bott Broadcasting Company

Request for Expedited Processing

The applicant requests expedited processing for this Minor Modification of a Licensed Facility (Construction Permit Application) for FM Translator K245CC.L - Olathe, KS (Facility ID: 140359).

On July 18th, 2022, KQRB(FM) – Effingham, KS (FAC ID: 164159) filed License to Cover Application LMS(lic)-0000195145 commencing its Class C2 operation covering outstanding Construction Permit LMS(cp)-0000186475. KQRB(FM) specifies operation on CH245C2 with 50 kW ERP (17.3 kW TPO) into an ERI Model SHPX-6AC antenna mounted 95 meters AGL (440 m AMSL; 114 m HAAT). Immediately prior to this commencement, on July 12, 2022, KQRB(FM) representatives contacted the K245CC licensee alleging significant interference. No 47 C.F.R. Section 74.1201(k) based listener complaints were submitted at that time; however, 47 C.F.R. Section 74.1204(a) contour overlap between the new KQRB(FM) facility and K245CC does exist as follows:



Therefore, out of an overabundance of caution, K245CC requests expedited processing of this Schedule 349 Minor Modification of a Licensed Facility (Construction Permit Application) to resolve this potential interference issue.