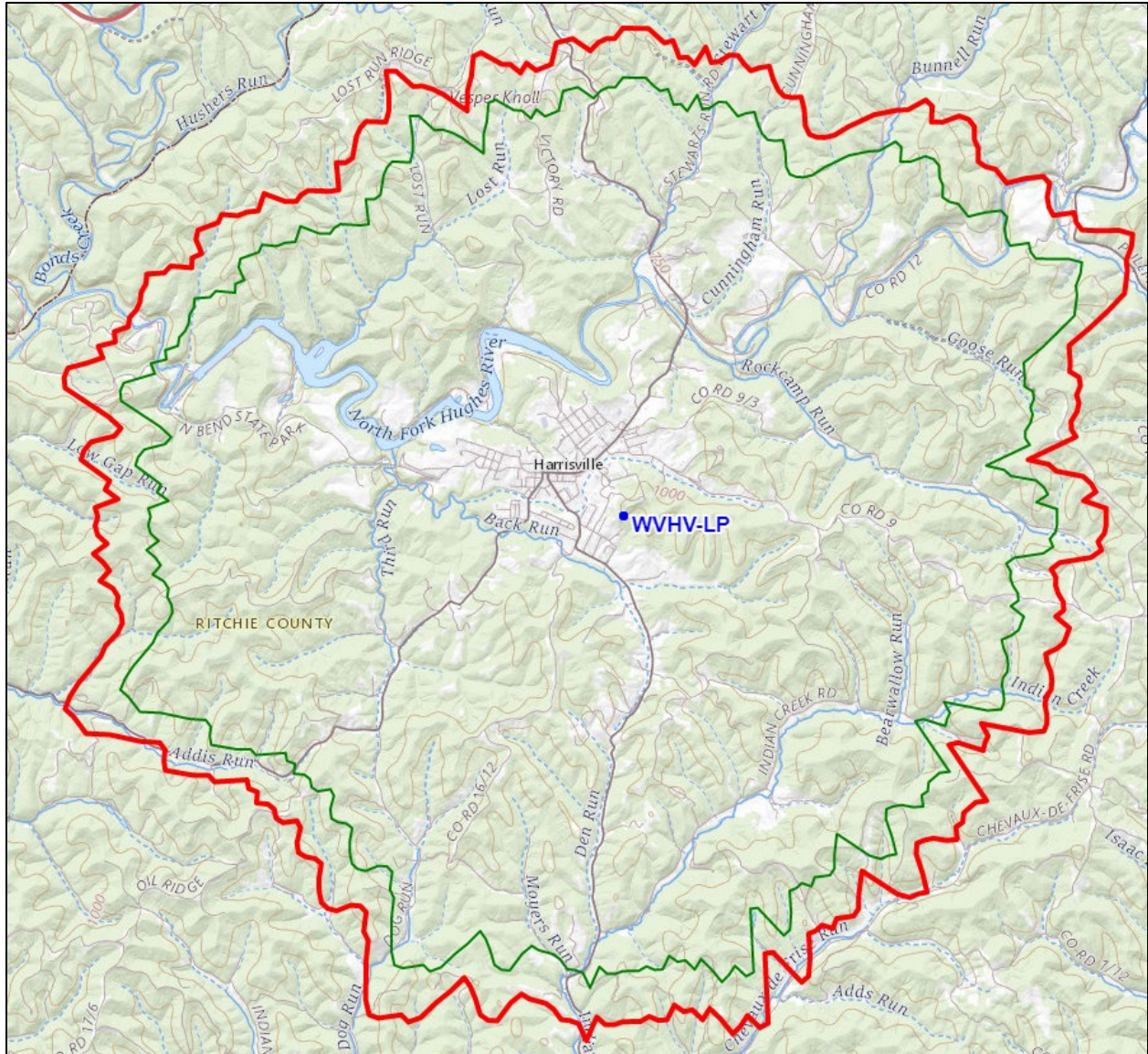




REC Networks/Michelle Bradley CBT  
11541 Riverton Wharf Rd.  
Mardela Springs, MD 21837  
844.REC.LPFM/202.621.2355  
recnet.com

Minor change for WVHV-LP  
HARRISVILLE, WV  
**RITCHIE PROGRESS ALLIANCE, INC.**  
BLL-20140930AMR

### PROPOSED 60dBu F(50,50) SERVICE CONTOUR



HARRISVILLE, WV – Channel 253LP100 (98.5 MHz) ~ ERP 0.017 kW  
Elev: 311 meters ~ RCAGL: 56 meters ~ RCAMSL: 367 meters ~ HAAT: 72m (GLOBE30)  
Support structure: 0 meters AGL  
Overall tower height: 59 meters AGL ~ ASR: None (no nearby airports)  
NAD83 Latitude: 39° 12' 17.7" NL – Longitude: 81° 02' 28.4" WL  
No nearby AM stations.

NAD83 LATITUDE: 39 - 12' 17.7" - LONGITUDE: 81 - 02' 28.4"  
CHANNEL: 253 - CLASS: LP100

CHAN	FREQ	CALL	LOCATION	CLS	DIST	REQ	CLEAR	BEAR
250	97.9	WKKW : WEST VIRGINIA RADIO	FAIRMONT CORPORATION	WV B	87.7	0.0	87.7	74.0
250	97.9	WNCI : IHM LICENSES, LLC	COLUMBUS	OH B	188.7	0.0	188.7	297.4
250	97.9	WMGA : FIFTH AVENUE BROADCASTING CO., INC	KENOVA	WV A	156.1	0.0	156.1	236.5
250	97.9	WVBD : SUMMIT MEDIA SOUTH, INC.	FAYETTEVILLE	WV A	141.9	0.0	141.9	177.5
251	98.1	W251CP : MID OHIO VALLEY RADIO CORPORATION	PARKERSBURG	WV D6	42.2	21.0	21.2	290.7
252	98.3	WCEF : BIG RIVER RADIO, INC.	RIPLEY	WV A	74.0	56.0	18.0	229.0
253	98.5	WCMO : MARIETTA COLLEGE	MARIETTA	OH D	41.9	24.0	17.9	304.6
253	98.5	WACL : IHM LICENSES, LLC	ELKTON	VA B1	216.9	87.0	129.9	113.9
253	98.5	WNCX : AUDACY LICENSE, LLC	CLEVELAND	OH B	244.5	112.0	132.5	346.2
253	98.5	WVHV-LP : RITCHIE PROGRESS ALLIANCE, INC. > Currently authorized facility - no physical change	HARRISVILLE	WV L1	0.0	24.0	-24.0	9.7
253	98.5	WYRA : EDUCATIONAL MEDIA FOUNDATION	CONFLUENCE	PA A	174.1	67.0	107.1	66.8
254	98.7	WRVZ : WEST VIRGINIA RADIO CORPORATION OF CHARLESTON	POCATALICO	WV A	105.6	56.0	49.6	212.0
254	98.7	WOVK : IHM LICENSES, LLC	WHEELING	WV B	100.2	97.0	3.2	13.2
255	98.9	WDNE-FM : WEST VIRGINIA RADIO CORPORATION OF ELKINS	ELKINS	WV B1	113.3	46.0	67.3	106.5
256	99.1	WDUQ-LP : KOL AMI HAVURAH	BENWOOD	WV L1	92.1	0.0	92.1	17.7
256	99.1	WRKW : FM RADIO LICENSES, LLC	EBENSBURG	PA B	235.9	0.0	235.9	54.5
256	99.1	WBWG-LP : GOD'S WORD BROADCASTING, INC.	IDA MAY	WV L1	74.9	0.0	74.9	63.7
256	99.1	WSLQ : MEL WHEELER, INC.	ROANOKE	VA C	236.0	0.0	236.0	160.6
256	99.1	WGGE : BURBACH OF DE, LLC	PARKERSBURG	WV B1	53.9	0.0	53.9	280.4

## **PURPOSE OF APPLICATION**

WVHV-LP  
Harrisville, West Virginia  
Channel 253LP100 (98.5 MHz)

WVHV-LP is currently authorized to operate at 11 watts (actually, 11.046 watts) effective radiated power (ERP). This is based on a height above average terrain (HAAT) of 87.891 meters.

This HAAT was calculated using functionality in the legacy CDBS filing system that automatically calculates the HAAT of LPFM Form 318s being filed, so the applicant does not have to do the calculation, thus simplifying the LPFM application process.

Over the years, it has been very well known that the calculations made by what REC calls the “CDBS Overnight Engineer” are not always accurate and many LPFM stations were assigned ERPs lower than what they are entitled to.

Utilizing the FCC’s legacy HAAT Calculator Tool and using GLOBE30 terrain data, the HAAT was calculated at 72 meters. The HAAT calculation functionality at the Commission’s Contours API also confirms the HAAT at 72.44 meters using GLOBE30 terrain data.

Pursuant to §73.811(a) of the Commission’s Rules and confirmed by the Commission’s FM POWER web tool, the maximum ERP allowed for an LPFM station at 72 meters HAAT is 17 watts (0.017 kW).

Therefore, the instant application is simply to request a construction permit to increase the ERP from 0.011 kW to 0.017 kW with no other changes in station operating parameters. Once granted, the applicant will modify their transmitter power output accordingly and file a license application to cover the granted construction permit.

Prepared by

/S/

Michelle Bradley, CBT  
REC Networks

April 22, 2022

## Antenna Height Above Average Terrain Calculations -- Results

### Input Data

Latitude **39° 12' 17.71" North**

Longitude **81° 2' 28.39" West (NAD 83)**

Height of antenna radiation center above mean sea level: **367 meters AMSL**

Number of Evenly Spaced Radials = **8**     0° is referenced to True North

### Results

Calculated HAAT = **72 meters**

Antenna Height Above Average Terrain calculated  
using 1 km [GLOBE terrain data](#)

### Individual "Radial HAAT" Values, in meters

0°	71.8 m
45°	79.7 m
90°	70.8 m
135°	63.2 m
180°	79.0 m
225°	63.3 m
270°	85.5 m
315°	64.1 m

Choose a U.S. State or Possession: WV - West Virginia ▼

Station Class: 100 watt LPFM ▼

72 meters Antenna Height Above Average Terrain (HAAT)

**Find Result**

Print

Clear Data

Results:

**Calculated ERP (rounded per Section 73.212) = 0.017 kW**

Unrounded ERP = 0.016743 kW