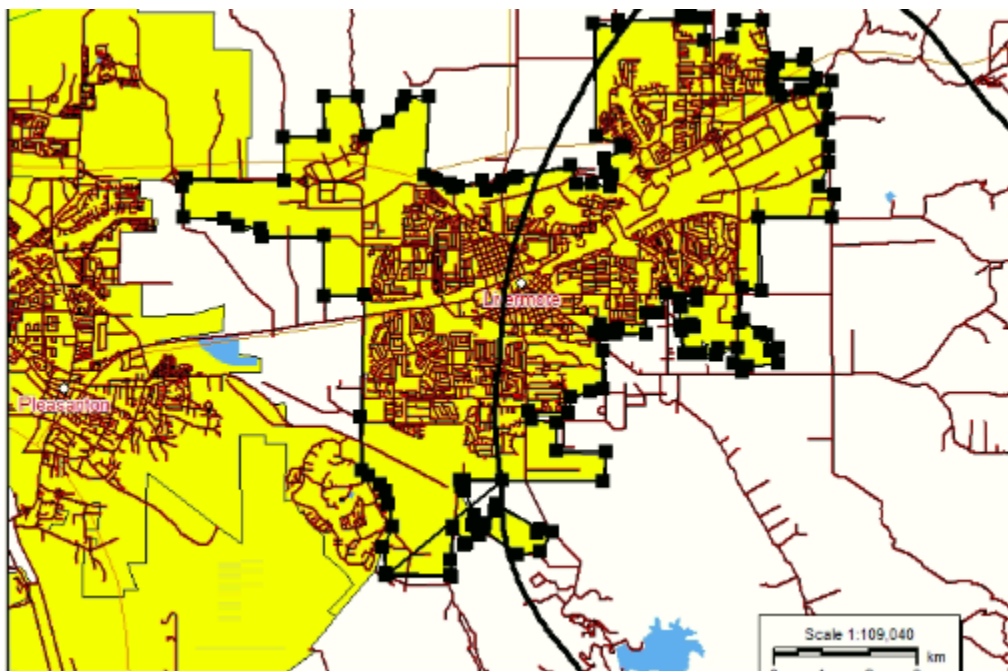


## NEW NCE FM LIVERMORE, CA

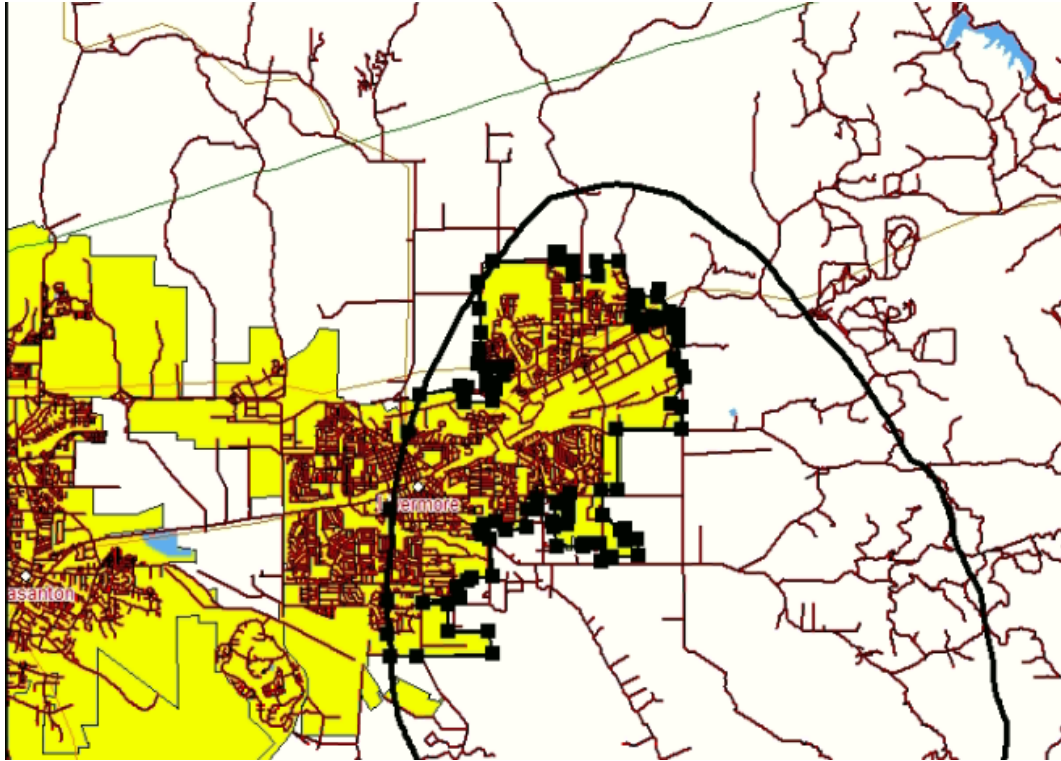
---

### PARAMETERS

COL	LIVERMORE, CA
COOR	37 35 42.6 N 121 39 48.2 W.
CH	210
ASR	NA
GROUND	619
TOWER	10
AGL	9
COR	628
HAAT	112.4
CLASS	A
POWER	0.055 kW
DA	Y
307B	N



Livermore City Limit vs. 60 dBu Proposed



37.6 km with Proposed 60 dBu  
 68.5 km total area (city limits) of Livermore, California  
 $37.6/68.5 = 55\%$  area

### Contours

Galaxy Cat

REFERENCE CH# 210A - 89.9 MHz, Pwr= 0.055 kW DA, HAAT= 112.4 M, COR= 628 M DISPLAY DATES  
 37 35 42.6 N. Average Protected F(50-50)= 9.4 km DATA 01-03-22  
 121 39 48.2 W. Standard Directional SEARCH 01-10-22

CH CITY	CALL	TYPE STATE	ANT	AZI. <--	DIST FILE #	LAT. LNG.	Pwr(kW) HAAT(M)	INT(km) COR(M)	PRO(km) LICENSEE	*IN* (Overlap in km)	*OUT*
210A Livermore	766057!	APP DCN CA	330.7	10.66	150.7 0000167159	37 40 43.80 121 43 21.90	0.200 -90	207	---Reference--- Galaxy Cat		
211B Stockton	KYCC	LIC DCN CA	39.5	52.41	219.7 BLED20080930ATZ	37 57 29.70 121 16 58.80	41.000 107	44.9 116	29.2 Your Christian Companion N	0.4	13.0
210B Angwin	KOSC	LIC CN CA	325.0	146.33	144.4 0000150741	38 40 08.40 122 37 53.90	0.800 933	129.8 1351	55.6 University Of Southern Cal	1.2	38.8
209B1 Los Altos	KFJC	LIC CN CA	234.3	52.21	54.0 BMLD19961105KB	37 19 13.70 122 08 32.80	0.110 562	46.3 820	29.7 Foothill-De Anza Community	3.1	18.5
208A Tracy	KVSJ-FM	LIC HN CA	60.6	17.99	240.8 BLED20130328AKC	37 40 27.30 121 29 07.50	0.100 -49	0.7 175	5.6 Peace And Justice Network	11.7	12.2
210B Le Grand	KEFR	LIC CN CA	92.2	144.33	273.2 BLED19910610KB	37 32 00.80 120 01 53.60	1.800 653	129.4 1330	54.4 Family Stations, Inc.	12.8	83.1

208A	KVSJ-FM	APP	CN	52.0	20.70	37 42 34.36	0.270	1.2	7.2	13.3	13.3
Tracy			CA	232.1	0000162813	121 28 40.82	-81	55	Peace And Justice Network		
208A	KBCC/KVSJ	CP	CN	52.0	20.70	37 42 34.36	0.240	1.1	7.0	13.4	13.6
Tracy			CA	232.1	0000092707	121 28 40.82	-81	55	Peace And Justice Network		
207A	KOHL	LIC	DEN	253.2	22.29	37 32 13.70	0.145	0.8	6.2	15.5	16.0
Fremont			CA	73.1	BLED19930503KA	121 54 17.80	124	329	Fremont-Newark Community C		
209B	KLRS	LIC	DCN	10.3	76.34	38 16 17.70	2.500	48.9	31.3	16.2	28.6
Lodi			CA	190.4	BLED20081103AAE	121 30 21.80	487	489	Educational Media Foundati		
211A	KZSU	LIC	CN	246.0	49.94	37 24 41.70	0.500	27.8	18.8	17.5	24.3
Stanford			CA	65.7	BLED1774	122 10 44.80	-3	155	The Board Of Trustees Of T		
213A	KSJS	LIC	DCN	193.1	43.99	37 12 32.80	1.500	1.4	15.6	40.5	28.3
San Jose			CA	13.0	BMLD20010928AAK	121 46 33.80	144	396	San Jose State University		
210A	KHCF	LIC	HN	175.4	55.28	37 05 55.10	0.160	21.1	6.3	32.1	42.5
Morgan Hill			CA	355.4	BLED20131017APM	121 36 47.10	-178	104	Common Frequency, Inc		
208A	KSMC	LIC	DHN	304.8	47.93	37 50 24.70	0.800	0.4	4.0	35.5	43.7
Moraga			CA	124.5	BLED19840702CA	122 06 39.80	24	205	Associated Students Of St.		
207A	KMTG	LIC	DCN	202.0	47.10	37 12 05.80	0.300	0.6	10.3	44.4	36.7
San Jose			CA	21.9	0000109662	121 51 45.80	-95	185	San Jose Unified School Di		
213A	KVHS	LIC	CN	328.5	56.74	38 01 48.70	0.410	1.4	10.0	39.5	46.3
Concord			CA	148.3	BLED20020430AAA	122 00 06.90	137	209	Clayton Valley High School		
207A	KCAI	CP	CY	55.1	59.27	37 53 55.40	1.600	1.8	18.9	51.5	40.3
Linden			CA	235.4	0000088692	121 06 36.10	74	96	Educational Media Foundati		
211A	767760	APP	DCN	210.2	57.88	37 08 39.90	0.005	12.5	8.5	43.3	46.5
Lexington Hills			CA	30.0	0000167221	121 59 31.40	275	642	Central Coast Media Educat		
213A	KLXF	LIC	CN	88.5	62.25	37 36 27.80	5.000	1.8	17.8	57.9	44.4
Modesto			CA	268.9	0000106732	120 57 30.80	38	62	Educational Media Foundati		

<----->

CH	CALL	TYPE	ANT	AZI.	DIST	LAT.	Pwr(kW)	INT(km)	PRO(km)	*IN*	*OUT*
CITY			STATE	<--	FILE #	LNG.	HAAT(M)	COR(M)	LICENSEE	(Overlap in km)	
210A	KFER	APP	DHN	200.9	57.95	37 06 27.00	0.068	10.6	2.1	45.3	49.4
Santa Cruz			CA	20.8	0000162743	121 53 50.00	331	672	Santa Cruz Educational Bro		
210A	KFER	LIC	CN	203.1	70.31	37 00 44.80	0.200	22.4	6.7	45.8	57.1
Santa Cruz			CA	22.9	BLED19920212KB	121 58 28.80	8	174	Santa Cruz Educational Bro		
212B1	KDFC	LIC	DCN	291.4	78.89	37 51 03.70	1.000	1.5	29.7	67.1	49.1
San Francisco			CA	110.9	BLED20120109ABQ	122 29 53.90	301	353	University Of Southern Cal		
207A	KPFB	LIC	DHN	300.1	61.88	37 52 19.70	0.460	0.7	5.7	49.8	56.0
Berkeley			CA	119.7	BLED19910909KB	122 16 21.80	-30	72	Pacifica Foundation, Inc.		
208A	KHCF	APP	DHN	188.0	60.89	37 03 06.60	0.014	0.1	7.8	58.7	53.0
Morgan Hill			CA	7.9	0000125602	121 45 32.30	458	750	Common Frequency, Inc		

207A 766444 Pierce	APP DCN CA	326.2 69.02 145.9 0000167205	38 06 37.80 0.160 0.4 122 06 08.70 -6 56	5.2 53.1 63.4 Media Alliance
208A KP00 San Francisco	LIC DHN CA	288.6 69.85 108.1 BLED19800304AC	37 47 32.70 0.270 0.9 122 24 55.80 165 188	15.8 59.2 53.9 Poor People's Radio, Inc.
208A KBES Ceres	LIC CN CA	90.4 62.35 270.8 BLED20100901ACT	37 35 20.80 0.150 0.9 120 57 26.80 40 72	8.2 59.3 54.0 Bet-Nahrain, Inc.
212A 768408 Newman	APP DHN CA	122.5 57.80 302.9 0000167223	37 18 52.70 0.100 0.1 121 06 46.60 8 149	2.4 55.5 55.3 Modesto Independent Media
207A KBCZ Boulder Creek	LIC CN CA	216.6 65.53 36.3 0000145377	37 07 14.70 0.115 0.8 122 06 13.90 383	5.8 62.7 59.6 Boulder Creek Recreation &
207B1 KCAI Linden	LIC DVN CA	54.4 101.00 235.0 BLED20160318ABS	38 07 09.70 0.450 1.5 120 43 30.80 587 945	40.7 93.5 60.2 Educational Media Foundati
209B1 KNVM Prunedale	CP DCN CA	171.3 94.20 351.4 BPED20190507ABL	36 45 21.90 0.330 30.9 121 30 09.80 715 1013	19.8 61.2 71.5 Educational Media Foundati
209B KNVM Prunedale	LIC DCN CA	171.3 94.20 351.4 BLED20060822AJC	36 45 21.90 0.450 30.9 121 30 09.80 715 1013	19.8 61.3 71.6 Educational Media Foundati
208A KZCT Vallejo	LIC DVN CA	323.3 77.27 143.0 BLED20110316ABV	38 09 05.70 0.007 0.0 122 11 28.80 264 343	3.1 62.2 73.8 Ozcat Entertainment
207A KMVS Moss Beach	LIC DCN CA	267.3 72.27 86.8 0000113882	37 33 44.00 0.043 0.1 122 28 49.80 500 581	6.3 65.2 65.9 Educational Media Foundati
207A KPDO Pescadero	LIC CN CA	239.6 76.72 59.2 BLED20180226AAA	37 14 39.80 0.100 0.7 122 24 36.90 -7 67	5.6 72.4 71.0 Pescadero Public Radio Ser

-----

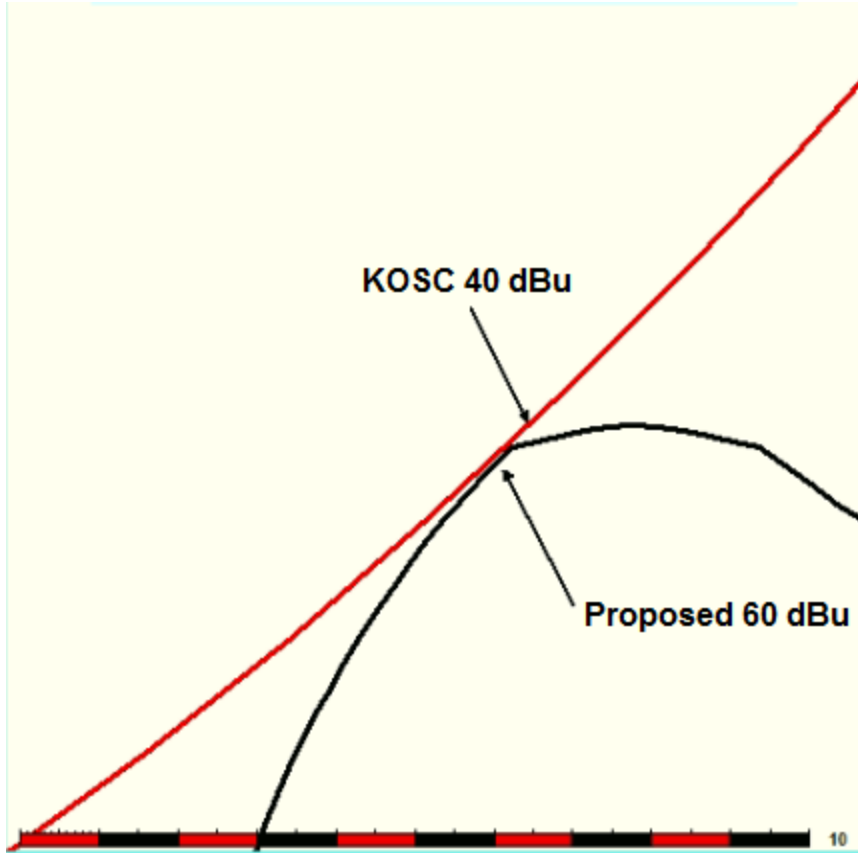
Terrain database is NGDC 30 SEC, R= 73.215 qualifying spacings or FCC minimum spacings in KM, M= Margin in KM

Contour distances are on direct line to and from reference station. Reference Zone= - Zone 1A, Co to 3rd adjacent.

All separation margins (if shown) include rounding. Call signs with exclamation marks need not be protected.

Ant Column: (D= DA Standard, Z= DA 73.215, N= Not DA 73.215, \_= Omni), Polarization (C,H,V,E), Beamtilt(Y,N,X)

« = Station meets FCC minimum distance spacing for its class.



04-16-2022      Terrain Data: NGDC 30 SEC      FMOVer Analysis

766057.A

KOSC 0000150741

Channel = 210A  
 Max ERP = 0.055 kW  
 RCAMSL = 628 m  
 N. Lat. 37 35 42.60  
 W. Lng. 121 39 48.20  
 Protected  
 60 dBu

Channel = 210B  
 Max ERP = 0.8 kW  
 RCAMSL = 1351 m  
 N. Lat. 38 40 08.40  
 W. Lng. 122 37 53.90  
 Interfering  
 40 dBu

Azimuth (degrees)	ERP (kW)	HAAT (m)	Dist (km)	Azimuth (degrees)	ERP (kW)	HAAT (m)	Dist (km)	Actual (dBu)	IX (km)
265.0	000.0021	0365.0	006.9	146.7	000.8000	1122.9	143.0	36.61	
266.0	000.0022	0363.1	006.9	146.7	000.8000	1122.9	142.9	36.65	
267.0	000.0022	0360.6	007.0	146.7	000.8000	1122.9	142.7	36.68	
268.0	000.0023	0359.8	007.1	146.7	000.8000	1122.9	142.6	36.72	
269.0	000.0024	0358.4	007.1	146.7	000.8000	1122.9	142.4	36.75	
270.0	000.0025	0356.8	007.2	146.7	000.8000	1122.9	142.3	36.79	
271.0	000.0026	0355.2	007.3	146.7	000.8000	1122.9	142.1	36.83	
272.0	000.0027	0353.5	007.4	146.7	000.8000	1122.9	142.0	36.88	
273.0	000.0029	0351.3	007.5	146.7	000.8000	1122.9	141.8	36.92	

274.0	000.0030	0351.1	007.6		146.8	000.8000	1122.9	141.6	36.96
275.0	000.0031	0352.4	007.8		146.8	000.8000	1123.0	141.4	37.01
276.0	000.0033	0353.4	007.9		146.8	000.8000	1123.0	141.3	37.06
277.0	000.0034	0350.7	008.0		146.8	000.8000	1122.9	141.1	37.10
278.0	000.0036	0346.5	008.1		146.7	000.8000	1122.9	140.9	37.14
279.0	000.0037	0342.4	008.1		146.7	000.8000	1122.9	140.8	37.17
280.0	000.0039	0338.6	008.2		146.7	000.8000	1122.8	140.6	37.21
281.0	000.0041	0336.9	008.3		146.7	000.8000	1122.8	140.5	37.26
282.0	000.0043	0337.2	008.4		146.7	000.8000	1122.8	140.3	37.31
283.0	000.0045	0339.4	008.6		146.7	000.8000	1122.8	140.0	37.36
284.0	000.0047	0345.5	008.8		146.7	000.8000	1122.9	139.8	37.42
285.0	000.0049	0354.0	009.0		146.7	000.8000	1122.9	139.5	37.49
286.0	000.0051	0362.9	009.2		146.7	000.8000	1122.9	139.3	37.56
287.0	000.0054	0371.5	009.4		146.7	000.8000	1122.9	139.0	37.63
288.0	000.0056	0379.2	009.6		146.7	000.8000	1122.9	138.7	37.70
289.0	000.0059	0386.1	009.8		146.7	000.8000	1122.9	138.5	37.76
290.0	000.0061	0391.8	010.0		146.7	000.8000	1122.9	138.2	37.83
291.0	000.0064	0395.3	010.2		146.7	000.8000	1122.9	138.0	37.89
292.0	000.0068	0396.9	010.4		146.7	000.8000	1122.8	137.7	37.95
293.0	000.0071	0397.1	010.5		146.7	000.8000	1122.8	137.5	38.01
294.0	000.0074	0396.6	010.6		146.6	000.8000	1122.7	137.3	38.07
295.0	000.0078	0395.5	010.8		146.6	000.8000	1122.6	137.1	38.12
296.0	000.0082	0394.0	010.9		146.6	000.8000	1122.5	136.9	38.17
297.0	000.0085	0392.3	011.0		146.5	000.8000	1122.4	136.7	38.22
298.0	000.0089	0390.9	011.1		146.5	000.8000	1122.3	136.5	38.27
299.0	000.0093	0390.0	011.2		146.4	000.8000	1122.2	136.3	38.32
300.0	000.0097	0389.8	011.3		146.4	000.8000	1122.1	136.1	38.37
301.0	000.0102	0390.3	011.5		146.3	000.8000	1122.0	135.9	38.43
302.0	000.0107	0391.4	011.7		146.3	000.8000	1121.9	135.7	38.49
303.0	000.0113	0392.8	011.8		146.2	000.8000	1121.7	135.4	38.55
304.0	000.0118	0394.2	012.0		146.2	000.8000	1121.6	135.2	38.61
305.0	000.0124	0395.3	012.1		146.1	000.8000	1121.4	135.0	38.66
306.0	000.0129	0396.1	012.3		146.1	000.8000	1121.2	134.7	38.72
307.0	000.0135	0396.4	012.4		146.0	000.8000	1121.0	134.5	38.77
308.0	000.0141	0396.3	012.6		145.9	000.8000	1120.8	134.3	38.82
309.0	000.0147	0396.3	012.7		145.8	000.8000	1120.6	134.2	38.87
310.0	000.0153	0396.7	012.8		145.8	000.8000	1120.3	134.0	38.92
311.0	000.0161	0397.9	013.0		145.7	000.8000	1120.1	133.7	38.98
312.0	000.0169	0399.6	013.2		145.6	000.8000	1119.8	133.5	39.05
313.0	000.0178	0401.7	013.4		145.5	000.8000	1119.5	133.2	39.11
314.0	000.0186	0403.7	013.6		145.5	000.8000	1119.2	133.0	39.17
315.0	000.0195	0405.5	013.8		145.4	000.8000	1118.8	132.8	39.23
316.0	000.0204	0406.9	013.9		145.3	000.8000	1118.5	132.6	39.28
317.0	000.0213	0407.9	014.1		145.2	000.8000	1118.0	132.4	39.33
318.0	000.0222	0408.2	014.3		145.1	000.8000	1117.6	132.2	39.38
319.0	000.0232	0407.8	014.4		145.0	000.8000	1117.1	132.0	39.43
320.0	000.0242	0406.9	014.5		144.9	000.8000	1116.6	131.8	39.47
321.0	000.0254	0405.7	014.7		144.8	000.8000	1116.0	131.7	39.51
322.0	000.0267	0404.3	014.9		144.7	000.8000	1115.4	131.5	39.55
323.0	000.0280	0403.0	015.0		144.6	000.8000	1114.8	131.3	39.59
324.0	000.0293	0401.8	015.2		144.5	000.8000	1114.1	131.2	39.63
325.0	000.0306	0400.6	015.3		144.3	000.8000	1113.3	131.0	39.67
326.0	000.0320	0399.5	015.5		144.2	000.8000	1112.5	130.9	39.71

327.0	000.0335	0398.4	015.6		144.1	000.8000	1111.7	130.7	39.74
328.0	000.0349	0397.5	015.8		144.0	000.8000	1110.8	130.6	39.77
329.0	000.0364	0396.8	015.9		143.9	000.8000	1109.8	130.4	39.80
330.0	000.0379	0396.1	016.1		143.7	000.8000	1108.8	130.3	39.83
331.0	000.0395	0395.3	016.3		143.6	000.8000	1107.7	130.2	39.86
332.0	000.0411	0394.4	016.4		143.5	000.8000	1106.6	130.1	39.88
333.0	000.0427	0393.7	016.6		143.3	000.8000	1105.4	130.0	39.91
334.0	000.0444	0393.3	016.7		143.2	000.8000	1104.2	129.9	39.93
335.0	000.0460	0392.9	016.9		143.1	000.8000	1102.9	129.8	39.94
336.0	000.0478	0392.5	017.0		142.9	000.8000	1101.6	129.7	39.96
337.0	000.0495	0391.9	017.2		142.8	000.8000	1100.2	129.6	39.97
338.0	000.0513	0391.2	017.3		142.6	000.8000	1098.7	129.6	39.98
339.0	000.0531	0390.2	017.4		142.5	000.8000	1097.2	129.5	39.98
340.0	000.0550	0389.2	017.6		142.3	000.8000	1095.7	129.5	39.98
341.0	000.0550	0388.1	017.6		142.2	000.8000	1094.4	129.6	39.94
342.0	000.0550	0387.0	017.5		142.1	000.8000	1093.0	129.7	39.90
343.0	000.0550	0385.8	017.5		142.0	000.8000	1091.7	129.8	39.85
344.0	000.0550	0384.1	017.5		141.8	000.8000	1090.3	130.0	39.80
345.0	000.0550	0381.2	017.4		141.7	000.8000	1089.1	130.2	39.74
346.0	000.0550	0376.4	017.3		141.6	000.8000	1087.9	130.4	39.67
347.0	000.0550	0370.6	017.2		141.5	000.8000	1086.8	130.6	39.60
348.0	000.0550	0364.5	017.0		141.4	000.8000	1085.7	130.9	39.52
349.0	000.0550	0359.1	016.9		141.3	000.8000	1084.7	131.1	39.45
350.0	000.0550	0353.7	016.8		141.3	000.8000	1083.6	131.4	39.37
351.0	000.0528	0348.8	016.5		141.2	000.8000	1083.0	131.8	39.26
352.0	000.0507	0344.0	016.2		141.2	000.8000	1082.5	132.1	39.15
353.0	000.0487	0338.8	015.9		141.1	000.8000	1082.0	132.6	39.03
354.0	000.0466	0336.9	015.7		141.1	000.8000	1081.4	132.9	38.94
355.0	000.0446	0334.4	015.4		141.0	000.8000	1080.9	133.2	38.84
356.0	000.0427	0330.2	015.2		141.0	000.8000	1080.5	133.6	38.74
357.0	000.0408	0321.9	014.8		141.0	000.8000	1080.5	134.1	38.62
358.0	000.0390	0313.7	014.4		141.0	000.8000	1080.5	134.5	38.50
359.0	000.0371	0306.6	014.1		141.0	000.8000	1080.5	134.9	38.39
000.0	000.0354	0299.0	013.8		141.0	000.8000	1080.6	135.3	38.29
001.0	000.0340	0291.3	013.5		141.0	000.8000	1080.6	135.7	38.18
002.0	000.0326	0287.5	013.2		141.0	000.8000	1080.4	136.0	38.10
003.0	000.0312	0284.5	013.0		141.0	000.8000	1080.2	136.3	38.02
004.0	000.0299	0280.5	012.8		141.0	000.8000	1080.1	136.7	37.93
005.0	000.0286	0276.5	012.6		141.0	000.8000	1080.1	137.0	37.85
006.0	000.0273	0271.6	012.3		141.0	000.8000	1080.2	137.3	37.76
007.0	000.0261	0266.3	012.1		141.0	000.8000	1080.3	137.6	37.68
008.0	000.0249	0260.9	011.8		141.0	000.8000	1080.5	138.0	37.59
009.0	000.0237	0256.9	011.6		141.0	000.8000	1080.7	138.3	37.52
010.0	000.0225	0253.7	011.4		141.0	000.8000	1080.8	138.6	37.44
011.0	000.0216	0248.3	011.2		141.0	000.8000	1081.0	138.9	37.37
012.0	000.0207	0241.5	010.9		141.1	000.8000	1081.4	139.2	37.29
013.0	000.0198	0235.7	010.7		141.1	000.8000	1081.7	139.5	37.21
014.0	000.0190	0235.5	010.5		141.1	000.8000	1081.6	139.7	37.16
015.0	000.0182	0239.4	010.5		141.1	000.8000	1081.2	139.9	37.11
016.0	000.0173	0243.2	010.5		141.0	000.8000	1080.8	140.0	37.06
017.0	000.0165	0244.5	010.4		141.0	000.8000	1080.6	140.2	37.01
018.0	000.0158	0243.0	010.2		141.0	000.8000	1080.8	140.5	36.95
019.0	000.0150	0239.9	010.0		141.0	000.8000	1081.1	140.7	36.89

020.0	000.0142	0236.0	009.8		141.1	000.8000	1081.5	141.0	36.82
021.0	000.0137	0230.2	009.6		141.1	000.8000	1082.0	141.2	36.76
022.0	000.0131	0223.6	009.4		141.2	000.8000	1082.6	141.5	36.70
023.0	000.0126	0217.9	009.1		141.2	000.8000	1083.2	141.7	36.64
024.0	000.0120	0214.1	009.0		141.3	000.8000	1083.6	142.0	36.58

-----|-----

04-16-2022      Terrain Data: NGDC 30 SEC      FMOver Analysis

KOSC 0000150741

766057.A

Channel = 210B  
Max ERP = 0.8 kW  
RCAMSL = 1351 m  
N. Lat. 38 40 08.40  
W. Lng. 122 37 53.90  
Protected  
60 dBu

Channel = 210A  
Max ERP = 0.055 kW  
RCAMSL = 628 m  
N. Lat. 37 35 42.60  
W. Lng. 121 39 48.20  
Interfering  
40 dBu

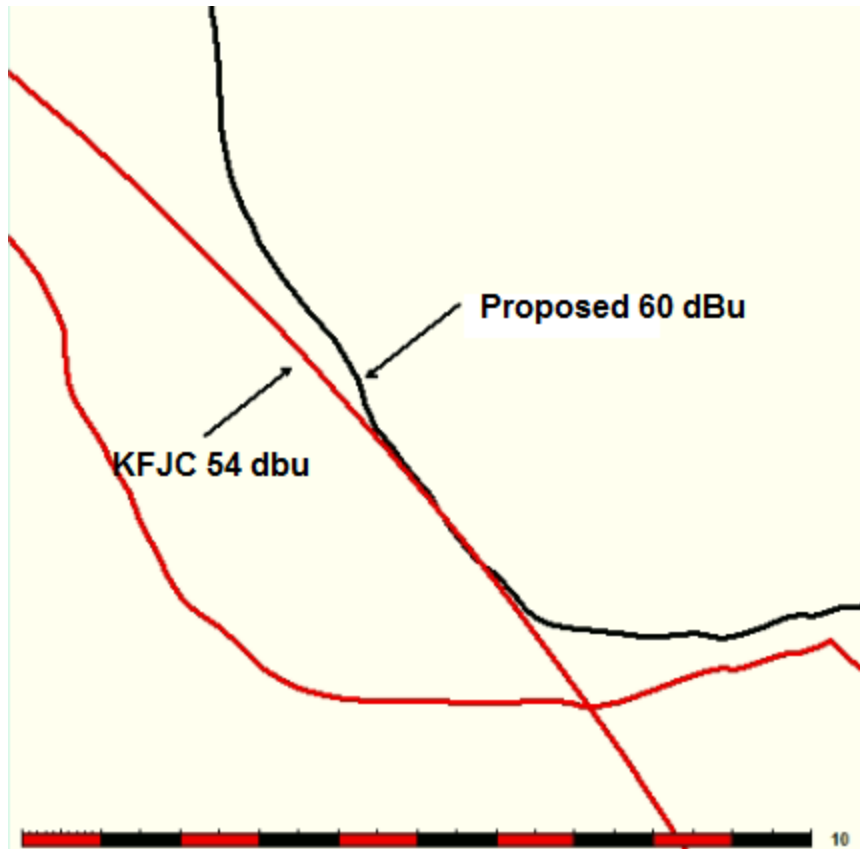
Azimuth (degrees)	ERP (kW)	HAAT (m)	Dist (km)		Azimuth (degrees)	ERP (kW)	HAAT (m)	Dist (km)	Actual (dBu)	IX (km)
----- -----										
084.0	000.8000	0830.7	049.9		344.6	000.0550	0382.7	129.0	18.19	
085.0	000.8000	0847.5	050.3		344.7	000.0550	0382.3	128.1	18.41	
086.0	000.8000	0861.3	050.7		344.8	000.0550	0382.1	127.1	18.64	
087.0	000.8000	0868.4	050.8		344.7	000.0550	0382.1	126.2	18.87	
088.0	000.8000	0870.5	050.9		344.7	000.0550	0382.3	125.4	19.09	
089.0	000.8000	0872.7	050.9		344.6	000.0550	0382.6	124.5	19.32	
090.0	000.8000	0874.9	051.0		344.5	000.0550	0382.8	123.6	19.55	
091.0	000.8000	0876.9	051.0		344.4	000.0550	0383.1	122.8	19.78	
092.0	000.8000	0874.9	051.0		344.3	000.0550	0383.5	121.9	20.00	
093.0	000.8000	0874.3	051.0		344.1	000.0550	0383.8	121.1	20.22	
094.0	000.8000	0873.6	051.0		344.0	000.0550	0384.1	120.3	20.44	
095.0	000.8000	0871.5	050.9		343.8	000.0550	0384.5	119.5	20.66	
096.0	000.8000	0867.9	050.8		343.6	000.0550	0384.9	118.7	20.87	
097.0	000.8000	0864.7	050.8		343.4	000.0550	0385.2	117.9	21.08	
098.0	000.8000	0864.5	050.7		343.2	000.0550	0385.5	117.1	21.30	
099.0	000.8000	0863.1	050.7		343.0	000.0550	0385.8	116.3	21.51	
100.0	000.8000	0858.9	050.6		342.8	000.0550	0386.2	115.6	21.71	
101.0	000.8000	0852.7	050.5		342.5	000.0550	0386.5	114.9	21.90	
102.0	000.8000	0845.6	050.3		342.2	000.0550	0386.8	114.2	22.08	
103.0	000.8000	0835.9	050.0		341.9	000.0550	0387.2	113.6	22.25	
104.0	000.8000	0823.8	049.7		341.5	000.0550	0387.6	113.0	22.40	
105.0	000.8000	0812.0	049.4		341.1	000.0550	0388.0	112.5	22.56	
106.0	000.8000	0800.1	049.1		340.7	000.0550	0388.4	112.0	22.70	
107.0	000.8000	0788.2	048.7		340.3	000.0550	0388.8	111.5	22.84	
108.0	000.8000	0777.9	048.4		339.9	000.0548	0389.2	111.0	22.96	
109.0	000.8000	0769.1	048.2		339.5	000.0541	0389.7	110.5	23.04	
110.0	000.8000	0761.1	047.9		339.2	000.0534	0390.1	110.1	23.12	
111.0	000.8000	0752.2	047.6		338.8	000.0527	0390.5	109.6	23.18	



112.0	000.8000	0740.3	047.3		338.3	000.0519	0390.9	109.3	23.22
113.0	000.8000	0725.8	046.8		337.8	000.0510	0391.3	109.0	23.22
114.0	000.8000	0708.3	046.2		337.3	000.0501	0391.7	108.9	23.19
115.0	000.8000	0691.2	045.7		336.8	000.0492	0392.0	108.8	23.15
116.0	000.8000	0677.9	045.2		336.3	000.0484	0392.3	108.6	23.13
117.0	000.8000	0669.9	044.9		335.9	000.0477	0392.5	108.3	23.15
118.0	000.8000	0666.8	044.8		335.6	000.0470	0392.7	107.9	23.20
119.0	000.8000	0667.7	044.9		335.2	000.0465	0392.8	107.4	23.28
120.0	000.8000	0670.6	045.0		334.9	000.0459	0392.9	106.9	23.37
121.0	000.8000	0676.8	045.2		334.6	000.0454	0393.0	106.3	23.49
122.0	000.8000	0688.9	045.6		334.4	000.0450	0393.1	105.5	23.65
123.0	000.8000	0706.4	046.2		334.2	000.0447	0393.2	104.6	23.86
124.0	000.8000	0726.8	046.8		334.0	000.0443	0393.3	103.7	24.09
125.0	000.8000	0748.0	047.5		333.8	000.0440	0393.4	102.7	24.32
126.0	000.8000	0773.2	048.3		333.5	000.0436	0393.4	101.6	24.58
127.0	000.8000	0802.5	049.1		333.3	000.0432	0393.5	100.5	24.86
128.0	000.8000	0832.8	049.9		333.1	000.0428	0393.7	099.4	25.13
129.0	000.8000	0861.4	050.7		332.8	000.0423	0393.8	098.3	25.37
130.0	000.8000	0888.7	051.3		332.4	000.0418	0394.1	097.4	25.58
131.0	000.8000	0914.1	051.9		332.1	000.0412	0394.4	096.6	25.76
132.0	000.8000	0936.7	052.3		331.7	000.0405	0394.7	095.8	25.92
133.0	000.8000	0956.0	052.7		331.2	000.0398	0395.2	095.2	26.05
134.0	000.8000	0973.5	053.1		330.7	000.0390	0395.6	094.6	26.15
135.0	000.8000	0991.1	053.4		330.2	000.0383	0396.0	094.0	26.25
136.0	000.8000	1009.0	053.7		329.7	000.0375	0396.3	093.5	26.34
137.0	000.8000	1025.9	054.1		329.2	000.0367	0396.7	093.0	26.42
138.0	000.8000	1041.1	054.3		328.7	000.0359	0397.0	092.5	26.47
139.0	000.8000	1054.9	054.6		328.1	000.0351	0397.4	092.1	26.51
140.0	000.8000	1068.1	054.8		327.6	000.0342	0397.9	091.8	26.53
141.0	000.8000	1080.5	055.0		327.0	000.0334	0398.5	091.4	26.54
142.0	000.8000	1092.1	055.2		326.4	000.0326	0399.1	091.2	26.53
143.0	000.8000	1102.4	055.4		325.8	000.0317	0399.7	091.0	26.51
144.0	000.8000	1110.9	055.5		325.2	000.0309	0400.5	090.8	26.47
145.0	000.8000	1117.1	055.6		324.6	000.0300	0401.1	090.7	26.40
146.0	000.8000	1121.1	055.7		323.9	000.0292	0401.9	090.7	26.31
147.0	000.8000	1123.3	055.8		323.3	000.0284	0402.6	090.7	26.21
148.0	000.8000	1124.1	055.8		322.7	000.0276	0403.4	090.8	26.08
149.0	000.8000	1123.6	055.8		322.1	000.0268	0404.2	090.9	25.94
150.0	000.8000	1122.7	055.7		321.5	000.0260	0405.0	091.1	25.79
151.0	000.8000	1120.9	055.7		320.9	000.0253	0405.8	091.3	25.63
152.0	000.8000	1117.4	055.7		320.3	000.0246	0406.6	091.5	25.44
153.0	000.8000	1110.9	055.5		319.7	000.0239	0407.2	091.8	25.24
154.0	000.8000	1101.7	055.4		319.2	000.0234	0407.7	092.2	25.04
155.0	000.8000	1091.7	055.2		318.6	000.0228	0408.0	092.7	24.81
156.0	000.8000	1082.1	055.1		318.1	000.0223	0408.2	093.1	24.58
157.0	000.8000	1072.7	054.9		317.6	000.0218	0408.1	093.6	24.33
158.0	000.8000	1065.2	054.8		317.1	000.0214	0407.9	094.1	24.08
159.0	000.8000	1060.0	054.7		316.5	000.0209	0407.5	094.5	23.84
160.0	000.8000	1054.7	054.6		316.0	000.0204	0407.0	095.0	23.58
161.0	000.8000	1048.1	054.5		315.5	000.0200	0406.3	095.5	23.31
162.0	000.8000	1042.3	054.4		315.1	000.0196	0405.6	096.0	23.04
163.0	000.8000	1039.2	054.3		314.6	000.0191	0404.8	096.5	22.78
164.0	000.8000	1039.8	054.3		314.1	000.0187	0403.9	097.0	22.52

165.0	000.8000	1042.6	054.4		313.6	000.0183	0402.9	097.5	22.26
166.0	000.8000	1044.6	054.4		313.1	000.0179	0401.9	097.9	21.99
167.0	000.8000	1044.8	054.4		312.7	000.0175	0401.0	098.5	21.71
168.0	000.8000	1043.5	054.4		312.2	000.0171	0400.1	099.0	21.43
169.0	000.8000	1042.6	054.4		311.8	000.0168	0399.2	099.6	21.15
170.0	000.8000	1040.6	054.3		311.4	000.0164	0398.5	100.3	20.87
171.0	000.8000	1035.9	054.2		311.0	000.0161	0397.9	100.9	20.58
172.0	000.8000	1031.1	054.2		310.6	000.0158	0397.4	101.6	20.29
173.0	000.8000	1028.6	054.1		310.3	000.0155	0397.0	102.3	20.01
174.0	000.8000	1028.0	054.1		309.9	000.0153	0396.7	103.0	19.75
175.0	000.8000	1028.2	054.1		309.5	000.0150	0396.4	103.6	19.49
176.0	000.8000	1027.3	054.1		309.2	000.0148	0396.3	104.3	19.24
177.0	000.8000	1026.4	054.1		308.8	000.0146	0396.3	105.1	18.98
178.0	000.8000	1025.0	054.0		308.5	000.0144	0396.3	105.8	18.73
179.0	000.8000	1024.0	054.0		308.2	000.0142	0396.3	106.5	18.47
180.0	000.8000	1022.7	054.0		307.9	000.0140	0396.3	107.3	18.22
181.0	000.8000	1021.7	054.0		307.6	000.0139	0396.4	108.1	17.96
182.0	000.8000	1023.8	054.0		307.3	000.0137	0396.4	108.8	17.71
183.0	000.8000	1025.6	054.1		307.0	000.0135	0396.4	109.6	17.45
184.0	000.8000	1029.0	054.1		306.7	000.0133	0396.3	110.4	17.20
185.0	000.8000	1033.5	054.2		306.4	000.0132	0396.3	111.1	16.94
186.0	000.8000	1038.6	054.3		306.1	000.0130	0396.2	111.9	16.68
187.0	000.8000	1042.1	054.4		305.9	000.0128	0396.0	112.7	16.42
188.0	000.8000	1041.5	054.3		305.6	000.0127	0395.9	113.6	16.15
189.0	000.8000	1040.8	054.3		305.4	000.0126	0395.7	114.4	15.89
190.0	000.8000	1043.9	054.4		305.2	000.0125	0395.5	115.2	15.62
191.0	000.8000	1054.3	054.6		304.9	000.0123	0395.2	116.0	15.35
192.0	000.8000	1065.6	054.8		304.7	000.0122	0395.0	116.8	15.08
193.0	000.8000	1073.2	054.9		304.4	000.0120	0394.7	117.7	14.81
194.0	000.8000	1079.1	055.0		304.2	000.0119	0394.4	118.6	14.54
195.0	000.8000	1085.7	055.1		304.0	000.0118	0394.2	119.4	14.27
196.0	000.8000	1089.4	055.2		303.8	000.0117	0394.0	120.3	14.00
197.0	000.8000	1089.3	055.2		303.7	000.0116	0393.8	121.3	13.73
198.0	000.8000	1086.1	055.1		303.6	000.0116	0393.6	122.2	13.47
199.0	000.8000	1086.3	055.1		303.5	000.0115	0393.5	123.1	13.20
200.0	000.8000	1091.5	055.2		303.4	000.0115	0393.3	124.1	12.93
201.0	000.8000	1096.7	055.3		303.2	000.0114	0393.1	125.0	12.67
202.0	000.8000	1097.2	055.3		303.1	000.0113	0393.0	125.9	12.40
203.0	000.8000	1095.2	055.3		303.1	000.0113	0392.9	126.9	12.15

-----|-----



04-16-2022      Terrain Data: NGDC 30 SEC      FMOver Analysis

766057.A

KFJC    BML19961105KB

Channel = 210A  
 Max ERP = 0.055 kW  
 RCAMSL = 628 m  
 N. Lat. 37 35 42.60  
 W. Lng. 121 39 48.20  
 Protected  
 60 dBu

Channel = 209B1  
 Max ERP = 0.11 kW  
 RCAMSL = 820 m  
 N. Lat. 37 19 13.70  
 W. Lng. 122 08 32.80  
 Interfering  
 54 dBu

Azimuth (degrees)	ERP (kW)	HAAT (m)	Dist (km)	Azimuth (degrees)	ERP (kW)	HAAT (m)	Dist (km)	Actual (dBu)	IX (km)
174.0	000.0017	-0112.2	002.1	056.0	000.1100	0757.5	051.2	52.18	
175.0	000.0017	-0110.3	002.1	056.0	000.1100	0757.5	051.2	52.19	
176.0	000.0017	-0105.3	002.1	056.0	000.1100	0757.5	051.1	52.20	
177.0	000.0017	-0100.5	002.1	056.0	000.1100	0757.5	051.1	52.21	
178.0	000.0017	-0097.4	002.1	056.0	000.1100	0757.6	051.1	52.22	
179.0	000.0017	-0096.4	002.1	055.9	000.1100	0757.6	051.1	52.24	
180.0	000.0017	-0099.3	002.1	055.9	000.1100	0757.6	051.0	52.25	
181.0	000.0017	-0102.2	002.1	055.9	000.1100	0757.6	051.0	52.26	

182.0	000.0017	-0108.3	002.1		055.9	000.1100	0757.6	051.0	52.27
183.0	000.0017	-0121.6	002.1		055.9	000.1100	0757.7	050.9	52.28
184.0	000.0017	-0135.8	002.1		055.8	000.1100	0757.7	050.9	52.29
185.0	000.0017	-0148.8	002.1		055.8	000.1100	0757.7	050.9	52.30
186.0	000.0017	-0159.5	002.1		055.8	000.1100	0757.7	050.8	52.31
187.0	000.0017	-0168.4	002.1		055.7	000.1100	0757.7	050.8	52.32
188.0	000.0017	-0179.9	002.1		055.7	000.1100	0757.8	050.8	52.33
189.0	000.0017	-0189.3	002.1		055.7	000.1100	0757.8	050.8	52.34
190.0	000.0017	-0196.6	002.1		055.7	000.1100	0757.8	050.7	52.35
191.0	000.0017	-0196.2	002.1		055.6	000.1100	0757.8	050.7	52.36
192.0	000.0017	-0184.6	002.1		055.6	000.1100	0757.9	050.7	52.37
193.0	000.0017	-0173.1	002.1		055.6	000.1100	0757.9	050.7	52.38
194.0	000.0017	-0164.2	002.1		055.5	000.1100	0757.9	050.6	52.39
195.0	000.0017	-0158.9	002.1		055.5	000.1100	0757.9	050.6	52.40
196.0	000.0017	-0155.6	002.1		055.5	000.1100	0758.0	050.6	52.41
197.0	000.0017	-0157.8	002.1		055.5	000.1100	0758.0	050.6	52.42
198.0	000.0017	-0158.9	002.1		055.4	000.1100	0758.0	050.5	52.43
199.0	000.0017	-0155.7	002.1		055.4	000.1100	0758.0	050.5	52.44
200.0	000.0017	-0153.0	002.1		055.4	000.1100	0758.1	050.5	52.45
201.0	000.0017	-0154.0	002.1		055.3	000.1100	0758.1	050.5	52.45
202.0	000.0017	-0156.8	002.1		055.3	000.1100	0758.1	050.5	52.46
203.0	000.0017	-0157.8	002.1		055.2	000.1100	0758.2	050.4	52.47
204.0	000.0017	-0154.4	002.1		055.2	000.1100	0758.2	050.4	52.48
205.0	000.0017	-0147.6	002.1		055.2	000.1100	0758.2	050.4	52.48
206.0	000.0017	-0140.4	002.1		055.1	000.1100	0758.2	050.4	52.49
207.0	000.0017	-0132.8	002.1		055.1	000.1100	0758.3	050.4	52.50
208.0	000.0017	-0125.1	002.1		055.1	000.1100	0758.3	050.3	52.50
209.0	000.0017	-0117.5	002.1		055.0	000.1100	0758.3	050.3	52.51
210.0	000.0017	-0110.4	002.1		055.0	000.1100	0758.4	050.3	52.52
211.0	000.0017	-0104.1	002.1		055.0	000.1100	0758.4	050.3	52.52
212.0	000.0017	-0099.2	002.1		054.9	000.1100	0758.4	050.3	52.53
213.0	000.0017	-0095.3	002.1		054.9	000.1100	0758.5	050.3	52.53
214.0	000.0017	-0092.9	002.1		054.8	000.1100	0758.5	050.3	52.54
215.0	000.0017	-0091.2	002.1		054.8	000.1100	0758.5	050.2	52.55
216.0	000.0017	-0087.2	002.1		054.8	000.1100	0758.6	050.2	52.55
217.0	000.0017	-0077.8	002.1		054.7	000.1100	0758.6	050.2	52.55
218.0	000.0017	-0064.8	002.1		054.7	000.1100	0758.6	050.2	52.56
219.0	000.0017	-0051.1	002.1		054.6	000.1100	0758.7	050.2	52.56
220.0	000.0017	-0038.6	002.1		054.6	000.1100	0758.7	050.2	52.57
221.0	000.0017	-0026.4	002.1		054.6	000.1100	0758.7	050.2	52.57
222.0	000.0017	-0013.6	002.1		054.5	000.1100	0758.8	050.2	52.57
223.0	000.0017	-0001.4	002.1		054.5	000.1100	0758.8	050.2	52.58
224.0	000.0017	0008.9	002.1		054.4	000.1100	0758.8	050.2	52.58
225.0	000.0017	0017.0	002.1		054.4	000.1100	0758.9	050.1	52.58
226.0	000.0017	0023.7	002.1		054.4	000.1100	0758.9	050.1	52.59
227.0	000.0017	0029.8	002.1		054.3	000.1100	0758.9	050.1	52.59
228.0	000.0017	0034.6	002.2		054.3	000.1100	0758.9	050.0	52.64
229.0	000.0017	0037.5	002.3		054.3	000.1100	0759.0	049.9	52.68
230.0	000.0017	0039.3	002.4		054.2	000.1100	0759.0	049.8	52.70
231.0	000.0017	0041.0	002.4		054.2	000.1100	0759.0	049.8	52.72
232.0	000.0017	0043.8	002.5		054.1	000.1100	0759.1	049.7	52.75
233.0	000.0017	0048.4	002.6		054.1	000.1100	0759.1	049.6	52.80
234.0	000.0017	0053.7	002.8		054.0	000.1100	0759.2	049.4	52.85

235.0	000.0017	0058.3	002.9		054.0	000.1100	0759.2	049.3	52.89
236.0	000.0017	0060.9	002.9		053.9	000.1100	0759.3	049.3	52.90
237.0	000.0017	0064.8	003.0		053.8	000.1100	0759.3	049.2	52.93
238.0	000.0017	0074.0	003.2		053.8	000.1100	0759.4	049.0	53.00
239.0	000.0017	0088.4	003.5		053.7	000.1100	0759.5	048.8	53.10
240.0	000.0017	0105.0	003.8		053.6	000.1100	0759.5	048.4	53.21
241.0	000.0017	0117.8	004.0		053.5	000.1100	0759.6	048.3	53.28
242.0	000.0017	0124.8	004.1		053.4	000.1100	0759.7	048.2	53.31
243.0	000.0017	0129.8	004.2		053.3	000.1100	0759.8	048.1	53.34
244.0	000.0017	0137.3	004.3		053.2	000.1100	0759.9	048.0	53.37
245.0	000.0017	0148.4	004.4		053.0	000.1100	0760.0	047.9	53.43
246.0	000.0017	0164.1	004.7		052.9	000.1100	0760.1	047.6	53.51
247.0	000.0017	0178.6	004.9		052.7	000.1100	0760.3	047.5	53.57
248.0	000.0017	0192.2	005.0		052.6	000.1100	0760.4	047.4	53.62
249.0	000.0017	0208.3	005.2		052.4	000.1100	0760.5	047.2	53.67
250.0	000.0017	0226.1	005.4		052.2	000.1100	0760.7	047.1	53.73
251.0	000.0017	0247.0	005.6		052.1	000.1100	0760.8	046.9	53.79
252.0	000.0017	0267.9	005.8		051.9	000.1100	0761.0	046.7	53.85
253.0	000.0017	0286.6	005.9		051.7	000.1100	0761.1	046.6	53.90
254.0	000.0017	0300.9	006.0		051.5	000.1100	0761.3	046.6	53.93
255.0	000.0017	0313.6	006.1		051.3	000.1100	0761.4	046.5	53.95
256.0	000.0017	0324.1	006.2		051.2	000.1100	0761.6	046.5	53.95
257.0	000.0017	0332.4	006.2		051.0	000.1100	0761.7	046.5	53.96
258.0	000.0017	0339.8	006.3		050.9	000.1100	0761.8	046.5	53.96
259.0	000.0017	0349.0	006.3		050.7	000.1100	0762.0	046.5	53.96
260.0	000.0017	0358.2	006.4		050.6	000.1100	0762.1	046.5	53.95
261.0	000.0018	0365.5	006.5		050.4	000.1100	0762.3	046.5	53.98
262.0	000.0019	0368.8	006.6		050.2	000.1100	0762.5	046.4	53.99
263.0	000.0019	0368.6	006.7		050.0	000.1100	0762.6	046.4	54.00
264.0	000.0020	0367.1	006.8		049.9	000.1100	0762.8	046.4	54.00
265.0	000.0021	0365.0	006.9		049.7	000.1100	0763.0	046.4	54.00
266.0	000.0022	0363.1	006.9		049.5	000.1100	0763.1	046.4	54.00
267.0	000.0022	0360.6	007.0		049.3	000.1100	0763.3	046.5	53.99
268.0	000.0023	0359.8	007.1		049.2	000.1100	0763.5	046.5	53.99
269.0	000.0024	0358.4	007.1		049.0	000.1100	0763.6	046.5	53.98
270.0	000.0025	0356.8	007.2		048.8	000.1100	0763.8	046.5	53.97
271.0	000.0026	0355.2	007.3		048.6	000.1100	0764.0	046.5	53.97
272.0	000.0027	0353.5	007.4		048.4	000.1100	0764.2	046.5	53.97
273.0	000.0029	0351.3	007.5		048.2	000.1100	0764.3	046.5	53.97
274.0	000.0030	0351.1	007.6		048.0	000.1100	0764.5	046.6	53.97
275.0	000.0031	0352.4	007.8		047.8	000.1100	0764.8	046.6	53.97
276.0	000.0033	0353.4	007.9		047.5	000.1100	0765.0	046.6	53.96
277.0	000.0034	0350.7	008.0		047.3	000.1100	0765.1	046.6	53.95
278.0	000.0036	0346.5	008.1		047.2	000.1100	0765.3	046.7	53.93
279.0	000.0037	0342.4	008.1		047.0	000.1100	0765.4	046.8	53.90
280.0	000.0039	0338.6	008.2		046.8	000.1100	0765.6	046.8	53.88
281.0	000.0041	0336.9	008.3		046.6	000.1100	0765.8	046.9	53.86
282.0	000.0043	0337.2	008.4		046.4	000.1100	0766.0	046.9	53.85
283.0	000.0045	0339.4	008.6		046.1	000.1100	0766.2	047.0	53.84
284.0	000.0047	0345.5	008.8		045.8	000.1100	0766.5	047.0	53.83
285.0	000.0049	0354.0	009.0		045.5	000.1100	0766.7	047.0	53.83
286.0	000.0051	0362.9	009.2		045.1	000.1100	0767.0	047.0	53.82
287.0	000.0054	0371.5	009.4		044.8	000.1100	0767.3	047.1	53.81

288.0	000.0056	0379.2	009.6		044.5	000.1100	0767.6	047.1	53.80
289.0	000.0059	0386.1	009.8		044.2	000.1100	0767.9	047.2	53.78
290.0	000.0061	0391.8	010.0		043.9	000.1100	0768.1	047.3	53.75
291.0	000.0064	0395.3	010.2		043.6	000.1100	0768.4	047.3	53.72
292.0	000.0068	0396.9	010.4		043.4	000.1100	0768.7	047.4	53.68
293.0	000.0071	0397.1	010.5		043.1	000.1100	0768.9	047.6	53.64

-----|-----

04-16-2022      Terrain Data: NGDC 30 SEC      FMOver Analysis

KFJC   BMLED19961105KB

766057.A

Channel = 209B1

Channel = 210A

Max ERP = 0.11 kW

Max ERP = 0.055 kW

RCAMSL = 820 m

RCAMSL = 628 m

N. Lat. 37 19 13.70

N. Lat. 37 35 42.60

W. Lng. 122 08 32.80

W. Lng. 121 39 48.20

Protected

Interfering

60 dBu

54 dBu

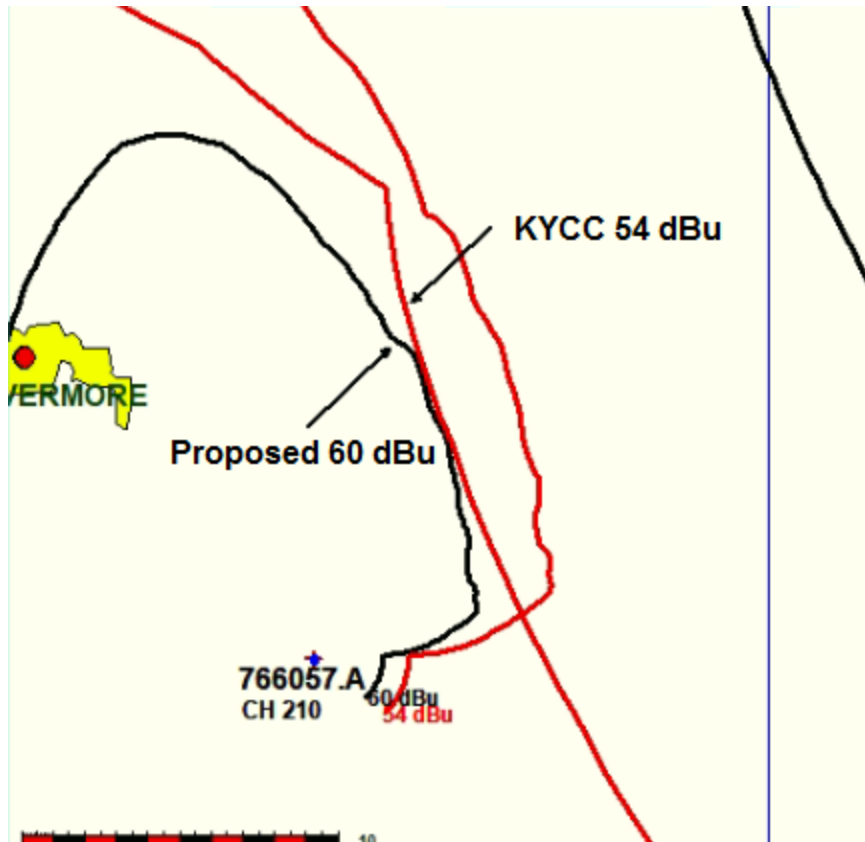
Azimuth (degrees)	ERP (kW)	HAAT (m)	Dist (km)		Azimuth (degrees)	ERP (kW)	HAAT (m)	Dist (km)	Actual (dBu)	IX (km)
354.0	000.1100	0722.0	028.9		267.9	000.0023	0359.8	045.4	30.17	
355.0	000.1100	0725.3	029.0		268.1	000.0023	0359.7	044.9	30.39	
356.0	000.1100	0728.1	029.1		268.2	000.0023	0359.6	044.4	30.61	
357.0	000.1100	0730.4	029.1		268.2	000.0023	0359.5	043.9	30.82	
358.0	000.1100	0732.8	029.2		268.3	000.0023	0359.3	043.4	31.04	
359.0	000.1100	0735.1	029.2		268.4	000.0023	0359.3	042.8	31.26	
000.0	000.1100	0737.3	029.3		268.4	000.0023	0359.2	042.3	31.48	
001.0	000.1100	0739.1	029.3		268.4	000.0023	0359.1	041.8	31.71	
002.0	000.1100	0740.8	029.3		268.4	000.0024	0359.1	041.3	31.93	
003.0	000.1100	0742.6	029.4		268.4	000.0024	0359.1	040.8	32.15	
004.0	000.1100	0744.6	029.4		268.4	000.0023	0359.1	040.3	32.38	
005.0	000.1100	0746.6	029.5		268.4	000.0023	0359.2	039.8	32.60	
006.0	000.1100	0748.6	029.5		268.4	000.0023	0359.2	039.2	32.83	
007.0	000.1100	0750.7	029.5		268.3	000.0023	0359.3	038.7	33.05	
008.0	000.1100	0752.7	029.6		268.3	000.0023	0359.4	038.2	33.28	
009.0	000.1100	0754.5	029.6		268.2	000.0023	0359.5	037.7	33.51	
010.0	000.1100	0755.9	029.7		268.1	000.0023	0359.7	037.2	33.73	
011.0	000.1100	0756.7	029.7		267.9	000.0023	0359.8	036.7	33.95	
012.0	000.1100	0757.1	029.7		267.7	000.0023	0360.0	036.2	34.16	
013.0	000.1100	0757.3	029.7		267.5	000.0023	0360.0	035.7	34.36	
014.0	000.1100	0757.5	029.7		267.3	000.0023	0360.1	035.2	34.57	
015.0	000.1100	0757.8	029.7		267.0	000.0022	0360.5	034.7	34.78	
016.0	000.1100	0758.2	029.7		266.8	000.0022	0361.1	034.2	34.99	
017.0	000.1100	0758.7	029.7		266.5	000.0022	0362.0	033.7	35.21	
018.0	000.1100	0759.2	029.7		266.2	000.0022	0362.7	033.2	35.42	
019.0	000.1100	0759.7	029.7		265.8	000.0022	0363.4	032.7	35.62	
020.0	000.1100	0760.3	029.8		265.5	000.0021	0364.0	032.2	35.81	

021.0	000.1100	0761.1	029.8		265.1	000.0021	0364.6	031.7	36.01
022.0	000.1100	0761.9	029.8		264.7	000.0021	0365.8	031.3	36.22
023.0	000.1100	0762.7	029.8		264.3	000.0020	0366.6	030.8	36.43
024.0	000.1100	0763.6	029.8		263.8	000.0020	0367.4	030.3	36.63
025.0	000.1100	0764.6	029.8		263.4	000.0020	0368.1	029.9	36.83
026.0	000.1100	0765.5	029.9		262.8	000.0019	0368.8	029.4	37.02
027.0	000.1100	0766.5	029.9		262.3	000.0019	0368.9	029.0	37.20
028.0	000.1100	0767.3	029.9		261.7	000.0019	0368.5	028.6	37.36
029.0	000.1100	0768.0	029.9		261.1	000.0018	0366.1	028.1	37.45
030.0	000.1100	0768.6	029.9		260.4	000.0018	0361.8	027.7	37.49
031.0	000.1100	0769.1	029.9		259.7	000.0017	0355.9	027.3	37.52
032.0	000.1100	0769.6	029.9		259.0	000.0017	0349.1	026.9	37.60
033.0	000.1100	0770.1	030.0		258.3	000.0017	0341.9	026.5	37.66
034.0	000.1100	0770.6	030.0		257.4	000.0017	0335.7	026.2	37.74
035.0	000.1100	0771.1	030.0		256.6	000.0017	0329.3	025.8	37.82
036.0	000.1100	0771.4	030.0		255.7	000.0017	0321.5	025.4	37.85
037.0	000.1100	0771.5	030.0		254.8	000.0017	0311.1	025.1	37.79
038.0	000.1100	0771.5	030.0		253.8	000.0017	0298.6	024.8	37.67
039.0	000.1100	0771.2	030.0		252.8	000.0017	0283.4	024.5	37.44
040.0	000.1100	0770.9	030.0		251.8	000.0017	0263.0	024.2	37.02
041.0	000.1100	0770.4	030.0		250.7	000.0017	0240.2	024.0	36.48
042.0	000.1100	0769.8	030.0		249.6	000.0017	0217.8	023.7	35.83
043.0	000.1100	0769.0	029.9		248.4	000.0017	0198.4	023.5	35.19
044.0	000.1100	0768.1	029.9		247.2	000.0017	0181.3	023.3	34.58
045.0	000.1100	0767.2	029.9		246.0	000.0017	0164.1	023.1	33.81
046.0	000.1100	0766.3	029.9		244.8	000.0017	0145.4	023.0	32.78
047.0	000.1100	0765.4	029.9		243.5	000.0017	0133.0	022.8	32.07
048.0	000.1100	0764.5	029.8		242.2	000.0017	0125.9	022.7	31.69
049.0	000.1100	0763.6	029.8		240.9	000.0017	0117.0	022.6	31.15
050.0	000.1100	0762.7	029.8		239.6	000.0017	0098.7	022.6	29.68
051.0	000.1100	0761.7	029.8		238.3	000.0017	0077.8	022.5	27.53
052.0	000.1100	0760.9	029.8		237.0	000.0017	0064.6	022.5	25.97
053.0	000.1100	0760.0	029.7		235.6	000.0017	0060.1	022.4	25.40
054.0	000.1100	0759.2	029.7		234.3	000.0017	0055.3	022.5	24.71
055.0	000.1100	0758.4	029.7		233.0	000.0017	0048.3	022.5	23.46
056.0	000.1100	0757.5	029.7		231.7	000.0017	0042.7	022.5	22.28
057.0	000.1100	0756.7	029.7		230.4	000.0017	0039.9	022.6	21.62
058.0	000.1100	0756.0	029.7		229.1	000.0017	0037.7	022.7	21.05
059.0	000.1100	0755.3	029.6		227.8	000.0017	0033.8	022.8	20.06
060.0	000.1100	0754.7	029.6		226.5	000.0017	0027.0	022.9	19.04
061.0	000.1100	0754.2	029.6		225.3	000.0017	0019.1	023.0	18.94
062.0	000.1100	0753.6	029.6		224.1	000.0017	0009.7	023.2	18.82
063.0	000.1100	0752.8	029.6		222.9	000.0017	-0002.5	023.4	18.69
064.0	000.1100	0751.8	029.6		221.8	000.0017	-0016.9	023.6	18.54
065.0	000.1100	0750.6	029.5		220.6	000.0017	-0031.0	023.8	18.38
066.0	000.1100	0749.4	029.5		219.5	000.0017	-0044.1	024.1	18.21
067.0	000.1100	0748.2	029.5		218.5	000.0017	-0057.8	024.3	18.03
068.0	000.1100	0747.0	029.5		217.5	000.0017	-0071.8	024.6	17.84
069.0	000.1100	0745.7	029.4		216.5	000.0017	-0083.2	024.9	17.64
070.0	000.1100	0744.2	029.4		215.6	000.0017	-0089.5	025.2	17.44
071.0	000.1100	0742.4	029.4		214.7	000.0017	-0091.8	025.5	17.22
072.0	000.1100	0740.4	029.3		213.8	000.0017	-0093.2	025.9	17.00
073.0	000.1100	0738.2	029.3		213.0	000.0017	-0095.2	026.2	16.77

074.0	000.1100	0735.8	029.2		212.3	000.0017	-0098.1	026.6	16.54
075.0	000.1100	0733.5	029.2		211.5	000.0017	-0101.2	027.0	16.30
076.0	000.1100	0731.0	029.1		210.9	000.0017	-0104.9	027.4	16.07
077.0	000.1100	0728.5	029.1		210.2	000.0017	-0109.1	027.8	15.83
078.0	000.1100	0726.1	029.0		209.6	000.0017	-0113.3	028.2	15.60
079.0	000.1100	0723.7	029.0		209.0	000.0017	-0117.6	028.6	15.37
080.0	000.1100	0721.7	028.9		208.4	000.0017	-0121.7	029.0	15.15
081.0	000.1100	0719.7	028.9		207.9	000.0017	-0125.9	029.5	14.93
082.0	000.1100	0718.2	028.9		207.4	000.0017	-0129.8	029.9	14.72
083.0	000.1100	0717.3	028.8		206.9	000.0017	-0133.9	030.3	14.51
084.0	000.1100	0716.7	028.8		206.4	000.0017	-0137.6	030.7	14.31
085.0	000.1100	0716.0	028.8		205.9	000.0017	-0141.0	031.2	14.12
086.0	000.1100	0714.9	028.8		205.5	000.0017	-0144.0	031.6	13.93
087.0	000.1100	0713.6	028.8		205.1	000.0017	-0146.8	032.1	13.75
088.0	000.1100	0712.4	028.7		204.7	000.0017	-0149.6	032.5	13.57
089.0	000.1100	0711.1	028.7		204.4	000.0017	-0152.0	033.0	13.39
090.0	000.1100	0709.9	028.7		204.1	000.0017	-0153.9	033.5	13.22
091.0	000.1100	0708.5	028.7		203.8	000.0017	-0155.5	033.9	13.04
092.0	000.1100	0707.1	028.6		203.5	000.0017	-0156.6	034.4	12.86
093.0	000.1100	0705.8	028.6		203.3	000.0017	-0157.3	034.9	12.69
094.0	000.1100	0704.4	028.6		203.1	000.0017	-0157.7	035.4	12.52
095.0	000.1100	0703.3	028.5		202.8	000.0017	-0157.9	035.8	12.34
096.0	000.1100	0702.3	028.5		202.6	000.0017	-0157.9	036.3	12.17
097.0	000.1100	0700.4	028.5		202.5	000.0017	-0157.8	036.8	12.00
098.0	000.1100	0697.8	028.4		202.4	000.0017	-0157.6	037.3	11.83
099.0	000.1100	0694.8	028.4		202.3	000.0017	-0157.5	037.8	11.66
100.0	000.1100	0691.6	028.3		202.2	000.0017	-0157.4	038.3	11.50
101.0	000.1100	0688.0	028.2		202.2	000.0017	-0157.3	038.8	11.33
102.0	000.1100	0684.1	028.1		202.2	000.0017	-0157.3	039.3	11.17
103.0	000.1100	0680.0	028.1		202.2	000.0017	-0157.3	039.8	11.01
104.0	000.1100	0675.8	028.0		202.2	000.0017	-0157.3	040.3	10.85
105.0	000.1100	0671.5	027.9		202.2	000.0017	-0157.4	040.8	10.70
106.0	000.1100	0666.7	027.8		202.3	000.0017	-0157.5	041.3	10.55
107.0	000.1100	0661.3	027.7		202.4	000.0017	-0157.7	041.8	10.40
108.0	000.1100	0656.0	027.6		202.5	000.0017	-0157.8	042.3	10.26
109.0	000.1100	0650.9	027.5		202.6	000.0017	-0157.9	042.7	10.12
110.0	000.1100	0645.9	027.3		202.7	000.0017	-0157.9	043.2	09.98
111.0	000.1100	0641.1	027.2		202.8	000.0017	-0157.9	043.7	09.85
112.0	000.1100	0636.8	027.2		202.9	000.0017	-0157.8	044.2	09.72
113.0	000.1100	0633.1	027.1		203.0	000.0017	-0157.7	044.7	09.59

-----|-----





04-16-2022      Terrain Data: NGDC 30 SEC      FMOver Analysis

766057.A

KYCC BLED20080930ATZ

Channel = 210A  
 Max ERP = 0.055 kW  
 RCAMSL = 628 m  
 N. Lat. 37 35 42.60  
 W. Lng. 121 39 48.20  
 Protected  
 60 dBu

Channel = 211B  
 Max ERP = 41 kW  
 RCAMSL = 116 m  
 N. Lat. 37 57 29.70  
 W. Lng. 121 16 58.80  
 Interfering  
 54 dBu

Azimuth (degrees)	ERP (kW)	HAAT (m)	Dist (km)	Azimuth (degrees)	ERP (kW)	HAAT (m)	Dist (km)	Actual (dBu)	IX (km)
340.0	000.0550	0389.2	017.6	238.9	003.9148	0115.1	046.1	52.28	
341.0	000.0550	0388.1	017.6	238.8	003.9056	0115.1	045.8	52.39	
342.0	000.0550	0387.0	017.5	238.7	003.8957	0115.1	045.5	52.50	
343.0	000.0550	0385.8	017.5	238.6	003.8848	0115.1	045.2	52.60	
344.0	000.0550	0384.1	017.5	238.4	003.8721	0115.1	045.0	52.70	
345.0	000.0550	0381.2	017.4	238.3	003.8561	0115.1	044.7	52.79	
346.0	000.0550	0376.4	017.3	238.0	003.8349	0115.1	044.4	52.88	
347.0	000.0550	0370.6	017.2	237.7	003.8106	0115.1	044.2	52.95	
348.0	000.0550	0364.5	017.0	237.4	003.7850	0115.1	043.9	53.01	

349.0	000.0550	0359.1	016.9		237.1	003.7602	0115.1	043.7	53.08
350.0	000.0550	0353.7	016.8		236.8	003.7349	0115.1	043.5	53.14
351.0	000.0528	0348.8	016.5		236.3	003.6921	0115.1	043.3	53.15
352.0	000.0507	0344.0	016.2		235.8	003.6494	0115.1	043.2	53.16
353.0	000.0487	0338.8	015.9		235.3	003.6056	0115.0	043.1	53.15
354.0	000.0466	0336.9	015.7		234.8	003.5696	0115.0	043.0	53.16
355.0	000.0446	0334.4	015.4		234.4	003.5323	0115.0	042.8	53.17
356.0	000.0427	0330.2	015.2		233.9	003.4918	0115.0	042.8	53.15
357.0	000.0408	0321.9	014.8		233.3	003.4429	0115.0	042.7	53.10
358.0	000.0390	0313.7	014.4		232.7	003.3954	0115.0	042.7	53.04
359.0	000.0371	0306.6	014.1		232.1	003.3513	0114.9	042.7	52.98
000.0	000.0354	0299.0	013.8		231.6	003.3073	0114.9	042.7	52.92
001.0	000.0340	0291.3	013.5		231.1	003.2658	0114.9	042.7	52.86
002.0	000.0326	0287.5	013.2		230.6	003.3213	0114.8	042.7	52.94
003.0	000.0312	0284.5	013.0		230.2	003.3919	0114.8	042.7	53.05
004.0	000.0299	0280.5	012.8		229.8	003.4661	0114.8	042.7	53.14
005.0	000.0286	0276.5	012.6		229.4	003.5411	0114.7	042.7	53.23
006.0	000.0273	0271.6	012.3		228.9	003.6191	0114.7	042.7	53.31
007.0	000.0261	0266.3	012.1		228.5	003.6982	0114.6	042.7	53.38
008.0	000.0249	0260.9	011.8		228.1	003.7773	0114.5	042.8	53.44
009.0	000.0237	0256.9	011.6		227.6	003.8510	0114.4	042.9	53.50
010.0	000.0225	0253.7	011.4		227.3	003.9216	0114.3	042.9	53.55
011.0	000.0216	0248.3	011.2		226.9	003.9949	0114.1	043.0	53.59
012.0	000.0207	0241.5	010.9		226.5	004.0715	0113.9	043.1	53.62
013.0	000.0198	0235.7	010.7		226.1	004.1442	0113.7	043.2	53.64
014.0	000.0190	0235.5	010.5		225.8	004.2000	0113.6	043.2	53.69
015.0	000.0182	0239.4	010.5		225.6	004.2446	0113.5	043.1	53.76
016.0	000.0173	0243.2	010.5		225.3	004.2902	0113.4	043.0	53.82
017.0	000.0165	0244.5	010.4		225.0	004.3432	0113.3	043.0	53.87
018.0	000.0158	0243.0	010.2		224.7	004.4030	0113.2	043.1	53.90
019.0	000.0150	0239.9	010.0		224.4	004.4661	0113.1	043.2	53.92
020.0	000.0142	0236.0	009.8		224.1	004.5302	0113.0	043.3	53.93
021.0	000.0137	0230.2	009.6		223.8	004.5944	0112.9	043.4	53.93
022.0	000.0131	0223.6	009.4		223.5	004.6590	0112.8	043.6	53.91
023.0	000.0126	0217.9	009.1		223.2	004.7201	0112.7	043.7	53.90
024.0	000.0120	0214.1	009.0		222.9	004.7765	0112.6	043.9	53.90
025.0	000.0115	0212.3	008.8		222.6	004.8278	0112.5	043.9	53.90
026.0	000.0110	0211.5	008.7		222.4	004.8765	0112.5	044.0	53.91
027.0	000.0105	0211.4	008.6		222.2	004.9236	0112.4	044.1	53.92
028.0	000.0100	0212.2	008.5		221.9	004.9689	0112.3	044.1	53.93
029.0	000.0095	0213.8	008.4		221.7	005.0126	0112.2	044.2	53.95
030.0	000.0090	0214.7	008.3		221.5	005.0567	0112.1	044.2	53.95
031.0	000.0087	0213.7	008.2		221.3	005.1011	0112.1	044.3	53.95
032.0	000.0083	0210.9	008.0		221.1	005.1463	0112.0	044.5	53.93
033.0	000.0079	0207.5	007.9		220.9	005.1962	0111.9	044.6	53.91
034.0	000.0076	0204.6	007.7		220.7	005.2493	0111.8	044.7	53.90
035.0	000.0072	0202.5	007.6		220.5	005.3002	0111.8	044.9	53.88
036.0	000.0069	0201.4	007.5		220.3	005.3490	0111.7	045.0	53.88
037.0	000.0066	0201.2	007.4		220.2	005.3959	0111.6	045.1	53.87
038.0	000.0063	0201.4	007.3		220.0	005.4417	0111.6	045.1	53.87
039.0	000.0060	0201.3	007.2		219.8	005.4865	0111.5	045.2	53.87
040.0	000.0057	0200.6	007.1		219.7	005.5300	0111.4	045.3	53.85
041.0	000.0054	0198.9	007.0		219.5	005.5721	0111.4	045.5	53.84

042.0	000.0052	0196.3	006.8		219.4	005.6126	0111.3	045.6	53.81
043.0	000.0050	0194.1	006.7		219.2	005.6517	0111.3	045.7	53.79
044.0	000.0048	0193.3	006.6		219.1	005.6899	0111.2	045.8	53.78
045.0	000.0046	0194.0	006.6		219.0	005.7278	0111.2	045.9	53.77
046.0	000.0044	0195.7	006.5		218.8	005.7654	0111.1	045.9	53.77
047.0	000.0042	0198.1	006.5		218.7	005.8028	0111.1	046.0	53.77
048.0	000.0040	0200.9	006.4		218.6	005.8398	0111.0	046.1	53.77
049.0	000.0038	0203.9	006.4		218.4	005.8760	0111.0	046.1	53.77
050.0	000.0036	0206.3	006.3		218.3	005.9109	0110.9	046.2	53.76
051.0	000.0035	0207.6	006.3		218.2	005.9463	0110.9	046.3	53.76
052.0	000.0034	0207.4	006.2		218.1	005.9793	0110.8	046.3	53.75
053.0	000.0032	0206.1	006.2		218.0	006.0098	0110.8	046.4	53.73
054.0	000.0031	0203.7	006.1		217.9	006.0376	0110.7	046.6	53.71
055.0	000.0030	0200.4	006.0		217.8	006.0630	0110.7	046.7	53.67
056.0	000.0029	0196.8	005.9		217.7	006.0867	0110.7	046.8	53.64
057.0	000.0028	0194.2	005.8		217.6	006.1105	0110.6	046.9	53.61
058.0	000.0027	0193.4	005.7		217.5	006.1357	0110.6	047.0	53.58
059.0	000.0026	0193.8	005.7		217.4	006.1618	0110.6	047.1	53.57
060.0	000.0025	0194.7	005.6		217.4	006.1877	0110.5	047.2	53.55
061.0	000.0025	0194.5	005.6		217.3	006.2162	0110.5	047.3	53.55
062.0	000.0025	0193.7	005.6		217.2	006.2428	0110.5	047.3	53.53
063.0	000.0024	0194.2	005.5		217.1	006.2714	0110.4	047.4	53.53
064.0	000.0024	0196.7	005.5		217.0	006.3034	0110.4	047.4	53.54
065.0	000.0024	0200.4	005.6		216.9	006.3378	0110.4	047.4	53.55
066.0	000.0023	0203.5	005.6		216.7	006.3709	0110.3	047.5	53.56
067.0	000.0023	0204.1	005.6		216.6	006.3982	0110.3	047.5	53.55
068.0	000.0023	0203.1	005.5		216.6	006.4212	0110.3	047.6	53.53
069.0	000.0022	0200.9	005.5		216.5	006.4408	0110.3	047.7	53.51
070.0	000.0022	0199.4	005.4		216.4	006.4614	0110.3	047.8	53.49
071.0	000.0022	0198.5	005.4		216.4	006.4865	0110.2	047.9	53.48
072.0	000.0022	0198.1	005.4		216.3	006.5122	0110.2	047.9	53.47
073.0	000.0022	0197.5	005.4		216.2	006.5372	0110.2	048.0	53.46
074.0	000.0022	0194.4	005.4		216.1	006.5550	0110.2	048.1	53.44
075.0	000.0022	0186.4	005.3		216.1	006.5596	0110.2	048.2	53.39
076.0	000.0022	0174.4	005.1		216.1	006.5508	0110.2	048.4	53.32
077.0	000.0022	0162.2	004.9		216.2	006.5328	0110.2	048.6	53.23
078.0	000.0021	0149.8	004.7		216.3	006.5074	0110.2	048.8	53.14
079.0	000.0021	0136.9	004.5		216.4	006.4750	0110.2	049.0	53.03
080.0	000.0021	0125.4	004.3		216.5	006.4516	0110.3	049.2	52.95
081.0	000.0021	0114.6	004.2		216.5	006.4289	0110.3	049.4	52.87
082.0	000.0021	0104.5	004.0		216.6	006.4010	0110.3	049.5	52.78
083.0	000.0021	0095.3	003.8		216.7	006.3738	0110.3	049.7	52.70
084.0	000.0021	0087.3	003.6		216.8	006.3477	0110.4	049.9	52.62
085.0	000.0021	0078.6	003.4		216.9	006.3145	0110.4	050.0	52.53
086.0	000.0021	0068.7	003.2		217.1	006.2748	0110.4	050.2	52.44
087.0	000.0021	0059.6	003.0		217.2	006.2362	0110.5	050.4	52.35
088.0	000.0021	0048.5	002.8		217.4	006.1780	0110.6	050.6	52.23
089.0	000.0021	0031.6	002.2		217.8	006.0531	0110.7	051.0	52.01
090.0	000.0021	0014.6	002.2		217.8	006.0471	0110.7	051.0	51.98
091.0	000.0021	-0002.5	002.2		217.8	006.0545	0110.7	051.1	51.97
092.0	000.0021	-0015.7	002.2		217.8	006.0617	0110.7	051.1	51.97
093.0	000.0021	-0023.8	002.2		217.8	006.0687	0110.7	051.1	51.96
094.0	000.0021	-0031.3	002.2		217.7	006.0755	0110.7	051.2	51.95

095.0	000.0021	-0036.7	002.2		217.7	006.0821	0110.7	051.2	51.94
096.0	000.0021	-0039.1	002.2		217.7	006.0886	0110.7	051.2	51.93
097.0	000.0021	-0037.9	002.2		217.7	006.0948	0110.7	051.3	51.92
098.0	000.0021	-0036.7	002.2		217.7	006.1009	0110.7	051.3	51.91
099.0	000.0021	-0039.5	002.2		217.6	006.1067	0110.6	051.3	51.90

-----|-----

04-16-2022      Terrain Data: NGDC 30 SEC      FMOver Analysis

KYCC BLED20080930ATZ

766057.A

Channel = 211B

Channel = 210A

Max ERP = 41 kW

Max ERP = 0.055 kW

RCAMSL = 116 m

RCAMSL = 628 m

N. Lat. 37 57 29.70

N. Lat. 37 35 42.60

W. Lng. 121 16 58.80

W. Lng. 121 39 48.20

Protected

Interfering

60 dBu

54 dBu

Azimuth (degrees)	ERP (kW)	HAAT (m)	Dist (km)		Azimuth (degrees)	ERP (kW)	HAAT (m)	Dist (km)	Actual (dBu)	IX (km)
----- -----										
160.0	041.0000	0107.8	044.4		091.4	000.0021	-0009.7	048.8	09.44	
161.0	041.0000	0107.8	044.4		091.8	000.0021	-0013.2	048.1	09.59	
162.0	041.0000	0107.8	044.4		092.1	000.0021	-0016.6	047.4	09.75	
163.0	041.0000	0107.8	044.4		092.4	000.0021	-0019.4	046.7	09.92	
164.0	041.0000	0107.9	044.4		092.8	000.0021	-0022.0	045.9	10.09	
165.0	041.0000	0108.0	044.4		093.1	000.0021	-0024.5	045.2	10.28	
166.0	041.0000	0108.1	044.4		093.4	000.0021	-0027.0	044.5	10.47	
167.0	041.0000	0108.1	044.4		093.7	000.0021	-0029.4	043.7	10.67	
168.0	041.0000	0108.3	044.5		094.0	000.0021	-0031.5	043.0	10.87	
169.0	041.0000	0108.5	044.5		094.4	000.0021	-0033.5	042.2	11.08	
170.0	041.0000	0108.7	044.5		094.7	000.0021	-0035.2	041.5	11.30	
171.0	041.0000	0108.9	044.6		095.0	000.0021	-0036.6	040.7	11.52	
172.0	040.1111	0108.9	044.4		095.0	000.0021	-0036.7	040.0	11.77	
173.0	039.2319	0109.2	044.2		095.1	000.0021	-0036.9	039.2	12.02	
174.0	038.3624	0109.5	044.1		095.1	000.0021	-0037.0	038.4	12.28	
175.0	037.5027	0109.7	043.9		095.1	000.0021	-0036.9	037.6	12.55	
176.0	036.6528	0109.8	043.8		095.0	000.0021	-0036.6	036.8	12.82	
177.0	035.8126	0109.9	043.6		094.9	000.0021	-0036.2	036.0	13.09	
178.0	034.9821	0110.0	043.4		094.8	000.0021	-0035.6	035.2	13.37	
179.0	034.1614	0110.0	043.2		094.6	000.0021	-0034.7	034.5	13.66	
180.0	033.3504	0110.0	043.0		094.4	000.0021	-0033.5	033.7	13.94	
181.0	032.5491	0110.0	042.8		094.1	000.0021	-0032.1	032.9	14.23	
182.0	031.2258	0110.0	042.5		093.6	000.0021	-0028.4	032.2	14.53	
183.0	029.9300	0110.0	042.1		093.0	000.0021	-0023.6	031.4	14.83	
184.0	028.6616	0110.0	041.8		092.3	000.0021	-0018.5	030.7	15.16	
185.0	027.4207	0110.0	041.4		091.6	000.0021	-0011.4	030.0	15.49	
186.0	026.2072	0110.0	041.0		090.7	000.0021	0001.8	029.3	15.85	
187.0	025.0212	0110.0	040.7		089.9	000.0021	0016.9	028.6	16.20	

188.0	023.8627	0110.0	040.3		088.9	000.0021	0033.3	028.0	17.35
189.0	022.7316	0110.0	039.9		087.9	000.0021	0050.5	027.4	21.28
190.0	021.6280	0110.0	039.5		086.7	000.0021	0062.1	026.8	23.42
191.0	020.5518	0110.0	039.1		085.5	000.0021	0073.9	026.2	25.25
192.0	019.7129	0110.0	038.7		084.4	000.0021	0084.4	025.6	26.85
193.0	018.8915	0110.0	038.4		083.2	000.0021	0094.1	025.1	28.24
194.0	018.0876	0110.0	038.1		081.9	000.0021	0106.0	024.6	29.71
195.0	017.3012	0110.0	037.7		080.5	000.0021	0120.0	024.1	31.14
196.0	016.5322	0110.0	037.3		079.0	000.0021	0136.5	023.7	32.58
197.0	015.7807	0110.0	037.0		077.5	000.0022	0156.3	023.3	34.16
198.0	015.0467	0110.0	036.6		075.9	000.0022	0176.0	022.9	35.56
199.0	014.3302	0110.0	036.2		074.2	000.0022	0193.3	022.6	36.62
200.0	013.6312	0110.0	035.8		072.4	000.0022	0198.0	022.3	37.06
201.0	012.9496	0110.0	035.4		070.6	000.0022	0198.8	022.1	37.29
202.0	012.4251	0110.0	035.1		068.9	000.0022	0201.1	021.8	37.66
203.0	011.9114	0110.0	034.8		067.1	000.0023	0204.1	021.6	38.06
204.0	011.4085	0110.0	034.4		065.4	000.0024	0201.7	021.5	38.20
205.0	010.9165	0110.0	034.1		063.5	000.0024	0195.3	021.3	38.14
206.0	010.4353	0110.0	033.7		061.7	000.0025	0193.9	021.3	38.25
207.0	009.9650	0110.0	033.4		059.8	000.0026	0194.5	021.2	38.44
208.0	009.5055	0110.0	033.0		058.0	000.0027	0193.4	021.2	38.67
209.0	009.0569	0110.0	032.6		056.1	000.0029	0196.5	021.3	39.05
210.0	008.6191	0110.0	032.2		054.3	000.0031	0202.8	021.4	39.51
211.0	008.1922	0110.0	031.8		052.5	000.0033	0206.9	021.5	39.83
212.0	007.8584	0110.0	031.5		050.8	000.0035	0207.4	021.6	40.01
213.0	007.5316	0110.0	031.2		049.2	000.0037	0204.4	021.8	40.07
214.0	007.2118	0110.0	030.9		047.6	000.0040	0199.8	021.9	40.09
215.0	006.8988	0110.0	030.5		046.1	000.0043	0195.9	022.1	40.09
216.0	006.5928	0110.2	030.2		044.6	000.0046	0193.5	022.3	40.13
217.0	006.2938	0110.4	030.0		043.2	000.0050	0193.8	022.5	40.26
218.0	006.0017	0110.8	029.7		041.8	000.0053	0196.9	022.8	40.48
219.0	005.7165	0111.2	029.4		040.5	000.0056	0200.0	023.0	40.66
220.0	005.4383	0111.6	029.1		039.2	000.0059	0201.3	023.3	40.77
221.0	005.1670	0111.9	028.8		038.0	000.0063	0201.4	023.6	40.82
222.0	004.9567	0112.3	028.6		036.8	000.0067	0201.2	023.9	40.87
223.0	004.7508	0112.7	028.4		035.7	000.0070	0201.6	024.2	40.91
224.0	004.5492	0113.0	028.1		034.6	000.0074	0203.2	024.5	40.97
225.0	004.3520	0113.3	027.9		033.6	000.0077	0205.7	024.8	41.04
226.0	004.1591	0113.7	027.6		032.6	000.0081	0208.7	025.1	41.12
227.0	003.9707	0114.1	027.4		031.7	000.0084	0211.8	025.5	41.17
228.0	003.7866	0114.5	027.1		030.8	000.0087	0214.0	025.8	41.16
229.0	003.6068	0114.7	026.9		030.0	000.0090	0214.7	026.2	41.06
230.0	003.4315	0114.8	026.6		029.3	000.0094	0214.2	026.7	40.91
231.0	003.2605	0114.9	026.3		028.6	000.0097	0213.1	027.1	40.72
232.0	003.3396	0114.9	026.4		027.6	000.0102	0211.7	027.1	40.85
233.0	003.4196	0115.0	026.6		026.6	000.0107	0211.4	027.2	41.00
234.0	003.5006	0115.0	026.7		025.6	000.0112	0211.8	027.3	41.16
235.0	003.5826	0115.0	026.9		024.6	000.0117	0212.8	027.4	41.34
236.0	003.6654	0115.1	027.0		023.6	000.0122	0215.4	027.5	41.55
237.0	003.7493	0115.1	027.1		022.6	000.0128	0220.0	027.7	41.83
238.0	003.8341	0115.1	027.3		021.6	000.0133	0225.9	027.8	42.13
239.0	003.9198	0115.1	027.4		020.7	000.0138	0232.2	028.0	42.42
240.0	004.0065	0115.2	027.5		019.8	000.0144	0237.1	028.2	42.65

241.0	004.0941	0115.2	027.7		018.8	000.0151	0240.5	028.4	42.83
242.0	004.3093	0115.2	028.0		017.7	000.0160	0243.7	028.5	43.12
243.0	004.5301	0115.2	028.3		016.5	000.0169	0244.3	028.6	43.31
244.0	004.7563	0115.2	028.6		015.4	000.0178	0241.2	028.8	43.34
245.0	004.9881	0115.3	028.9		014.3	000.0187	0236.5	028.9	43.29
246.0	005.2254	0115.3	029.3		013.2	000.0197	0235.2	029.2	43.33
247.0	005.4682	0115.3	029.6		012.1	000.0206	0240.7	029.4	43.58
248.0	005.7165	0115.3	029.9		011.1	000.0216	0247.8	029.6	43.86
249.0	005.9704	0115.3	030.2		010.0	000.0225	0253.5	029.9	44.07
250.0	006.2297	0115.3	030.5		009.0	000.0236	0256.8	030.2	44.21
251.0	006.4946	0115.3	030.8		008.1	000.0248	0260.6	030.6	44.36
252.0	006.8351	0115.4	031.1		007.0	000.0261	0266.4	030.9	44.59
253.0	007.1843	0115.4	031.5		006.0	000.0274	0271.8	031.2	44.78
254.0	007.5422	0115.4	031.9		004.9	000.0287	0276.8	031.6	44.94
255.0	007.9088	0115.4	032.3		004.0	000.0299	0280.6	032.0	45.05
256.0	008.2841	0115.4	032.6		003.0	000.0312	0284.4	032.4	45.13
257.0	008.6681	0115.4	033.0		002.1	000.0324	0287.3	032.8	45.16
258.0	009.0608	0115.4	033.3		001.3	000.0335	0288.9	033.3	45.13
259.0	009.4622	0115.4	033.7		000.5	000.0346	0295.0	033.8	45.20
260.0	009.8722	0115.4	034.0		359.8	000.0358	0300.6	034.3	45.26
261.0	010.2910	0115.4	034.3		359.1	000.0370	0305.9	034.9	45.30
262.0	010.8320	0115.4	034.8		358.3	000.0384	0311.6	035.4	45.37
263.0	011.3869	0115.4	035.1		357.6	000.0397	0317.0	036.0	45.40
264.0	011.9556	0115.4	035.5		356.9	000.0410	0322.6	036.6	45.42
265.0	012.5382	0115.4	035.9		356.3	000.0422	0327.8	037.2	45.41
266.0	013.1346	0115.4	036.3		355.7	000.0433	0332.1	037.8	45.36
267.0	013.7449	0115.4	036.6		355.2	000.0443	0333.8	038.4	45.22
268.0	014.3690	0115.4	037.0		354.7	000.0452	0335.2	039.1	45.05
269.0	015.0070	0115.4	037.3		354.3	000.0461	0336.3	039.8	44.87
270.0	015.6589	0115.5	037.7		353.9	000.0469	0337.1	040.4	44.66
271.0	016.3246	0115.4	038.0		353.5	000.0476	0337.7	041.1	44.44
272.0	017.1789	0115.4	038.4		353.1	000.0485	0338.5	041.9	44.23
273.0	018.0550	0115.4	038.8		352.7	000.0492	0340.2	042.6	44.04
274.0	018.9528	0115.4	039.2		352.4	000.0499	0342.0	043.3	43.84
275.0	019.8725	0115.4	039.6		352.1	000.0506	0343.6	044.1	43.63
276.0	020.8139	0115.4	039.9		351.8	000.0511	0344.9	044.8	43.40
277.0	021.7771	0115.4	040.3		351.6	000.0516	0346.0	045.6	43.16
278.0	022.7621	0115.4	040.7		351.4	000.0520	0346.9	046.4	42.91
279.0	023.7689	0115.4	041.0		351.3	000.0523	0347.6	047.2	42.65

-----|-----