

NEW Borrego Springs, CA FAC# 762494
Method of Calculating Technical Parameters
January 4, 2022

The new area served (404.3 km²) and the population served (3,479) listed in technical parameters were calculated using ComStudy 2.2 with U.S. Census 2010 population data. The parameters of the study are listed below in Figure 1.

The area served and the population served within the 60 dBμ F(50,50) contour were calculated as listed in Figure 2.

| Param | Value [m] | Terrain | dBase |
|---------|-----------|----------|--------|
| AGL | 36.00 | | 28.00 |
| G-AMSL | 162.00 | 180.00 m | 877.50 |
| RC-AMSL | 198.00 | | 905.50 |
| HAAT | -221.54 | -221.54 | 557.00 |

Figure 1. Technical Parameters of Study

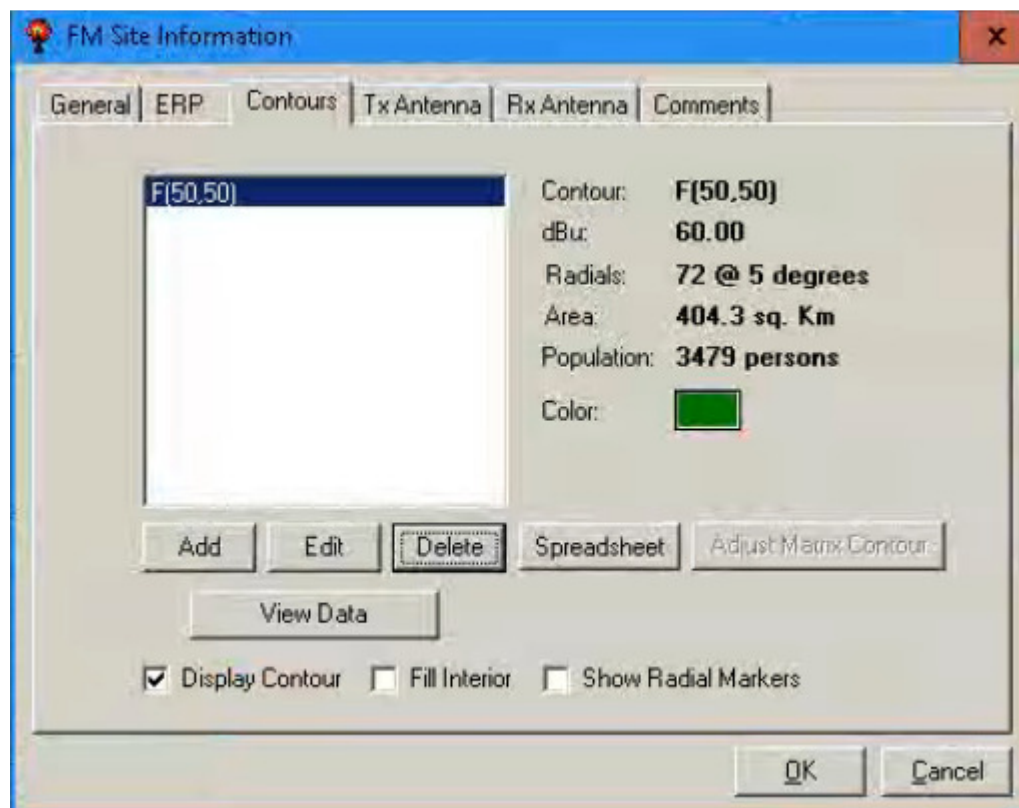


Figure 2. Area and Population Calculations within 60 dB μ F(50,50) contour.