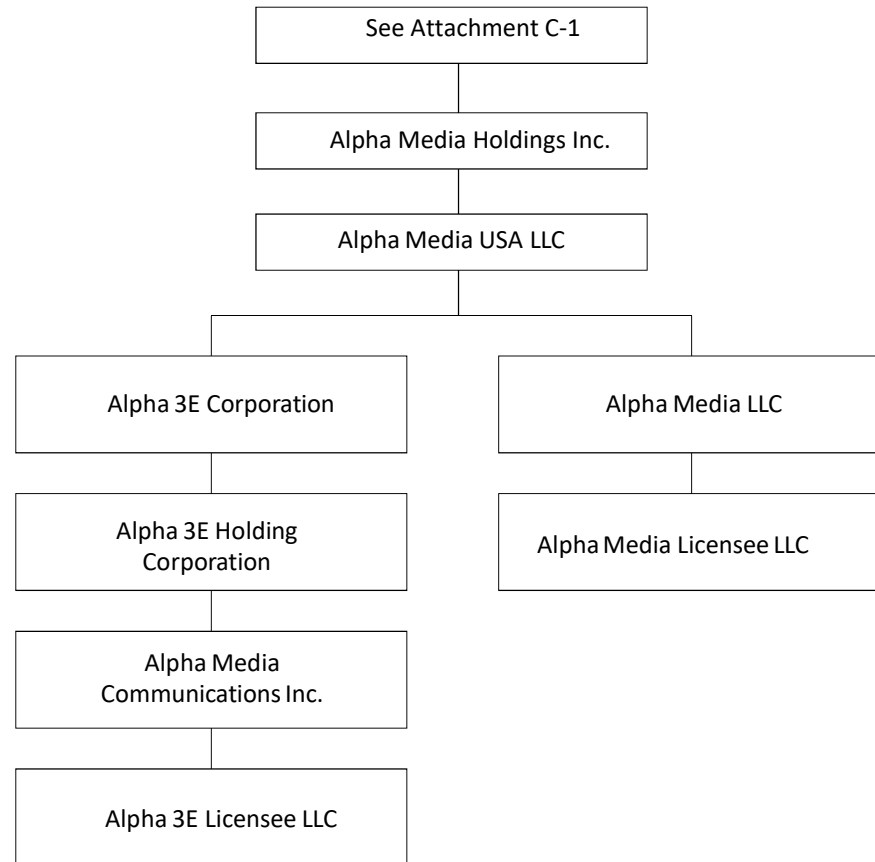
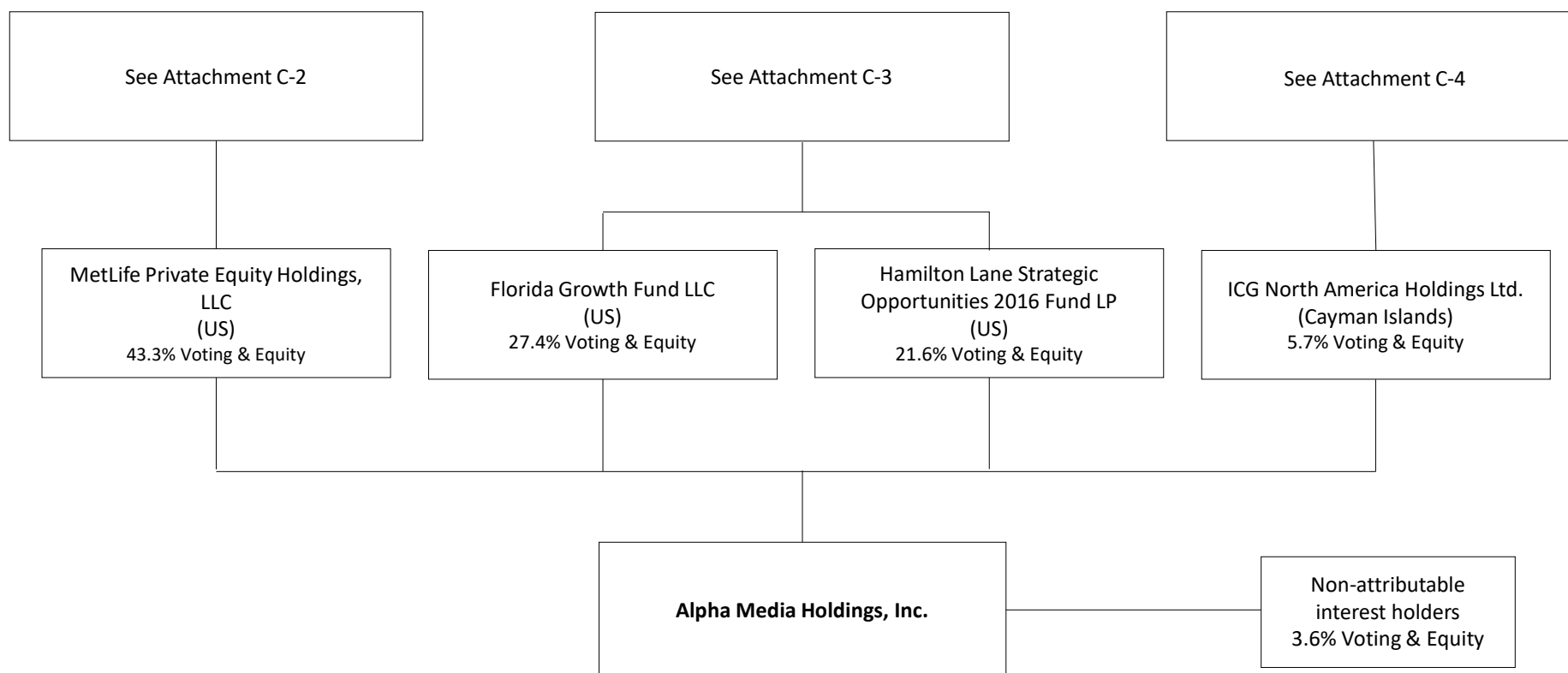


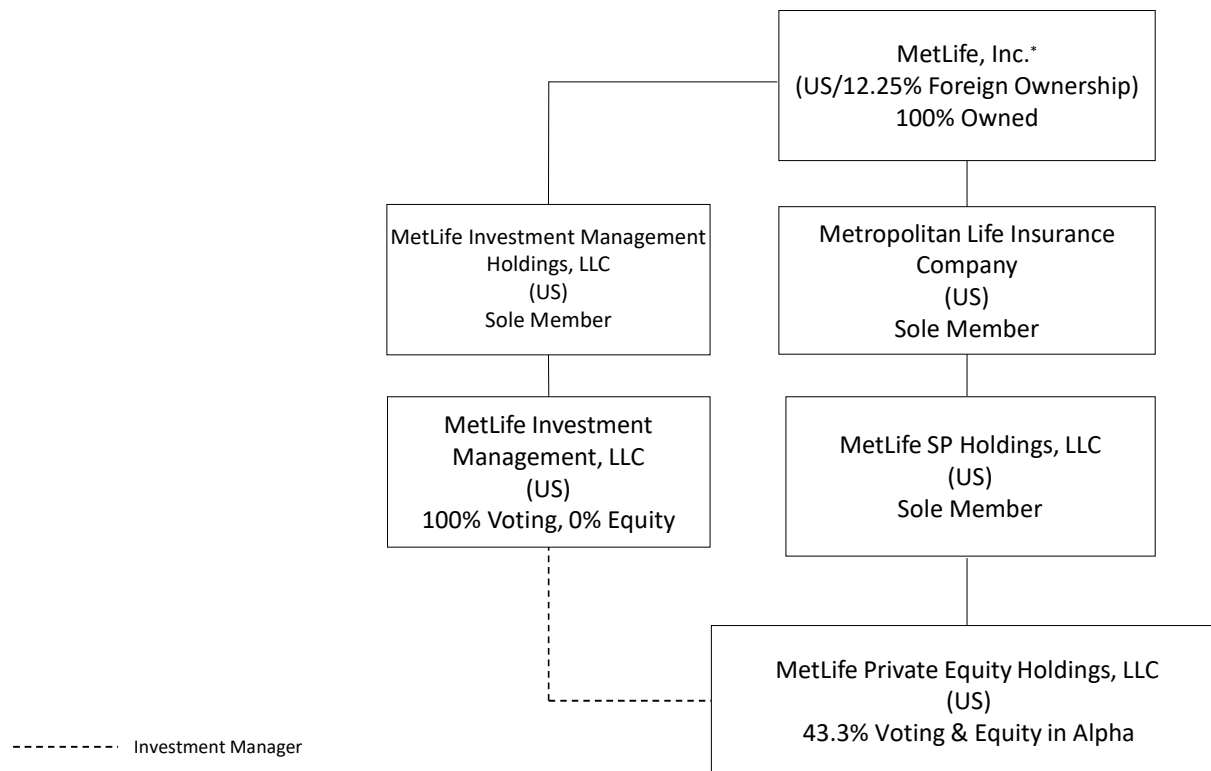
Organizational Chart



ATTACHMENT C-1



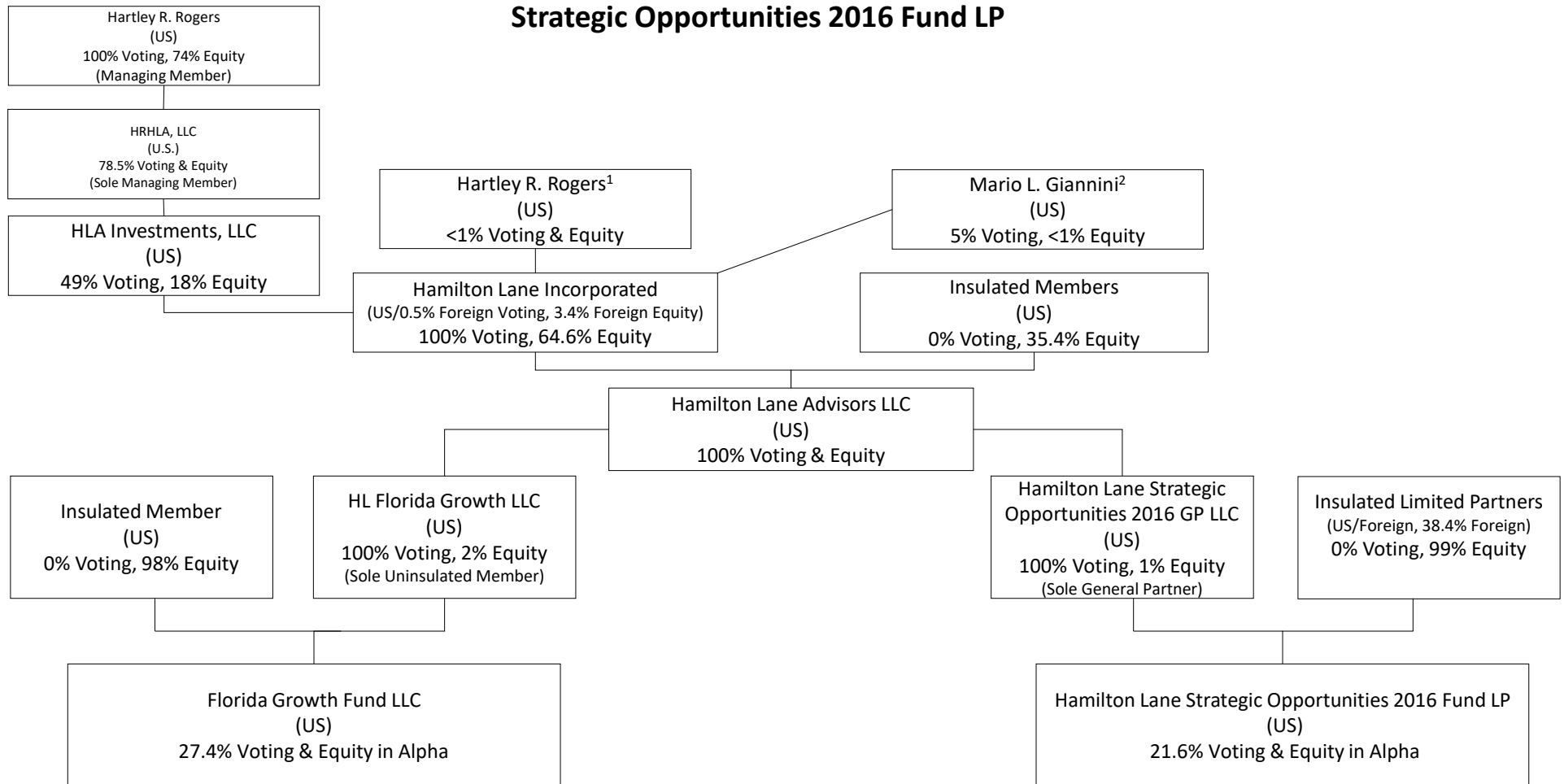
MetLife Private Equity Holdings, LLC



* MetLife, Inc., which is also the indirect parent of MetLife Insurance K.K. ("MIK"), acquired a 1.6% voting and equity interest in Alpha at emergence, such that MetLife Inc.'s total indirect interest is 43.3%. Prior to the exercise of the Warrants, MIK will transfer its entire interest in Alpha to MetLife Private Equity Holdings, LLC, and the total interest held by MetLife, Inc. will not change. MetLife SP Holdings, LLC is the sole member and manager of MetLife Private Equity Holdings, LLC and controls all of the voting and equity interests in it, but decision-making authority over the investments in Alpha has been delegated to MetLife Investment Management, LLC.

Florida Growth Fund LLC and Hamilton Lane Strategic Opportunities 2016 Fund LP

ATTACHMENT C-3

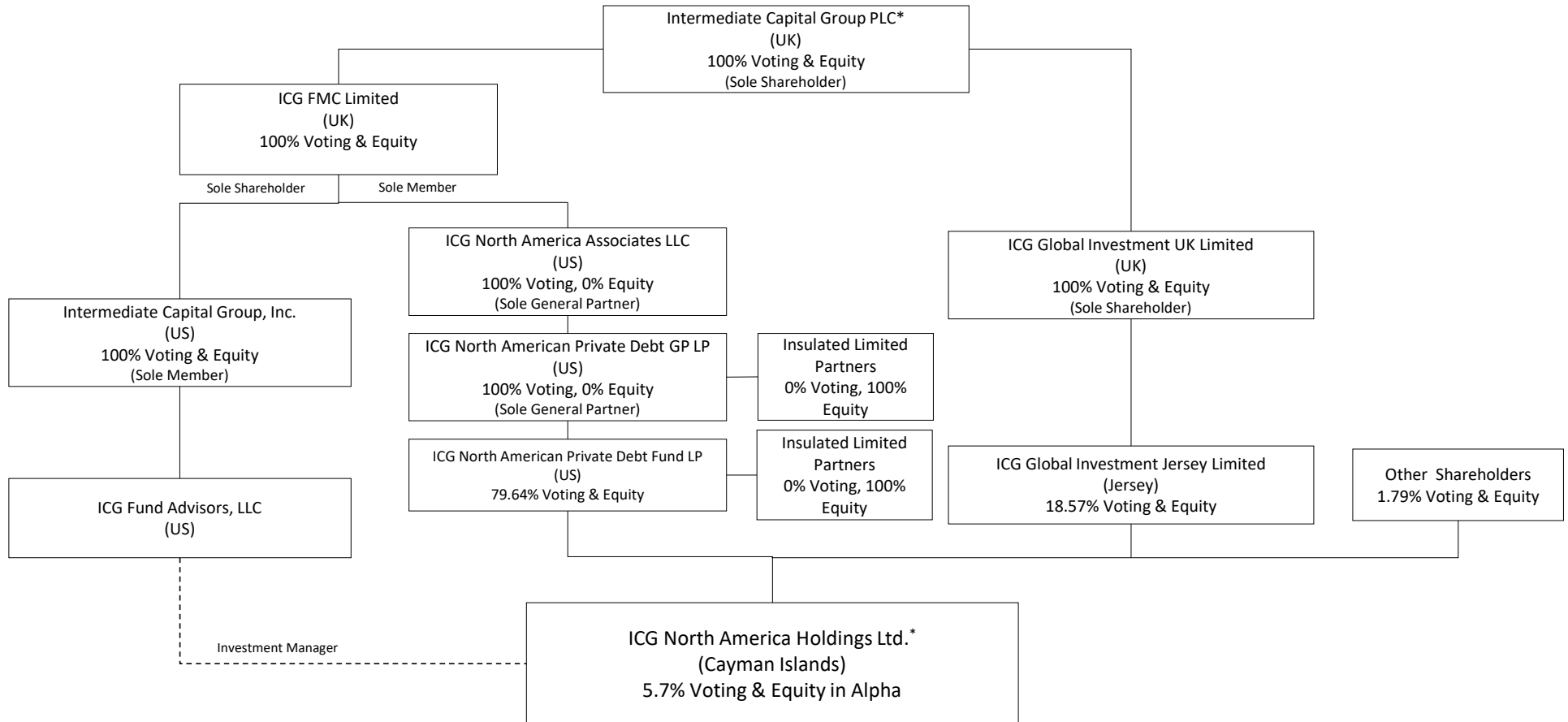


¹ Mr. Rogers directly holds small amounts of Hamilton Lane Incorporated stock. Through his direct interests and his controlling interest in HLA Investments, LLC, he ultimately controls approximately 49% of the total voting interests and 15% of the total equity interests in Hamilton Lane Incorporated.

² Mr. Giannini directly holds approximately 5% of the voting interests and less than 1% of the equity interests. He ultimately controls approximately 19% of the voting interests and 7% of the equity interests in Hamilton Lane Incorporated through his ownership of Hamilton Lane Advisors, Inc. a shareholder of Hamilton Lane Incorporated which will itself hold a non-attributable interest in Alpha.

ICG North America Holdings Ltd.

ATTACHMENT C-4



* Intermediate Capital Group PLC also directly holds a 0.5% equity and voting interest in Alpha, such that Intermediate Capital Group PLC's total interest is approximately 6.2%.

This is one of a number of biennial ownership reports being filed for Alpha Media Holdings Inc. ("Alpha"), Alpha's broadcast licensee subsidiaries, and intervening entities. These ownership reports will also serve as post consummation ownership reports for Alpha and applicable subsidiaries in connection with the following transactions: 0000138774; 000138727, 0000138678, 0000138519; 0000132830; 000133039.