

EXHIBIT A – TECHNICAL NARRATIVE

NEW NCEFM APPLICATION

CHANNEL 217 (91.9 MHZ)

**World Federation Of Pastors and Ministers of the Full Gospel, Inc
Knox, IN**

Applicant, is submitting this application for a new non-commercial facility. This facility will be located on a tower with the FCC ASRN 1220216.

This application is for First NCEFM Licensed Service to Knox, IN.

This application protects all stations, allotments, construction permits, and applications.

ENVIRONMENTAL

This application does not propose any changes to tower ASRN 1220216 that would require an environmental impact analysis.

ADDITIONAL EXHIBITS

Exhibit A – This Narrative

Exhibit B – Channel Study and Contour Protections

Exhibit C – Map showing no overlap between this proposal and WGCS.

Exhibit D – Community Coverage Contour Map

Exhibit E – Channel 6 TV Showing. required as the ch 6 LPTV stations are less than 174 km. (73.525)

Exhibit F – FM MODEL RFE analysis

Exhibit G – Aerial of site

Tower ASRN 1220216

41 – 22 – 35.9 N

86 – 32 – 51.7 W

Tower height is 76.5 meters without appurtenances, 79.2 meters overall

Antenna RCAGL is 59 meters both Horizontal and Vertical

G-AMSL is 213.4 meters

RCAMSL is 272 meters both Horizontal and Vertical

HAAT is 56.5 meters

ERP is 5.0 kW both Horizontal and Vertical

Class A

Non-Directional antenna

2 bay Nicom BKG 77, or similar type of antenna.

This narrative, Overlap Requirements, Community Coverage, Environmental, Site aerial photo

Proposed NCEFM Contour Protection

Exhibit B - Attached study shows the relevant channel 6 TV stations and existing NCEFM facilities including CPs, and applications.

Exhibit C - Contour map is included to show that there is no contour overlap with the Proposed facility and any other facilities.

Community Coverage

Exhibit D - Map showing that the 60 db contour coverage of the proposed NCEFM Community.

Exhibit E - TV 6 Interference Analysis

Section 73.525 designates TV 6 stations within 174 km of proposed FM stations on channel 217 to be affected.

Affected ch 6 LPTV stations:

WDXN, WDMY, and WRME. These stations are less than 174 km from the proposed facility. Contour F(50,50) is 47 db.

The proposed F(50,10) is 76 db. 73.599, figure 1 was used to determine value of the contour.

Environmental RFE – FMMODEL

Exhibit F - FMMODEL predicts this application will result in 18.6 mW/cm² or 9.3% of the 200 mW/cm² maximum allowable uncontrolled exposure to the general public.

Exhibit G - Aerial of Site

Site is secured by fence with a locked gate.

Applicant will place proper signage at the site, reduce or cease transmission when there are workers present working on the tower.

EXHIBIT I

ADDITIONAL TECHNICAL STATEMENT

Population Counts and Area are based on the US 2010 Census Block Centroids. The sum of all Census 2010 blocks that have 1 or more persons in that block that are inside a contour is counted as the population inside that contour. The area calculation is done by using triangles that fill the contour being measured. Then the area of each triangle is calculated and added together with other triangles areas inside the contour.

Proposed 60 db:

Population 37,534

Area 1,361.2 sq km

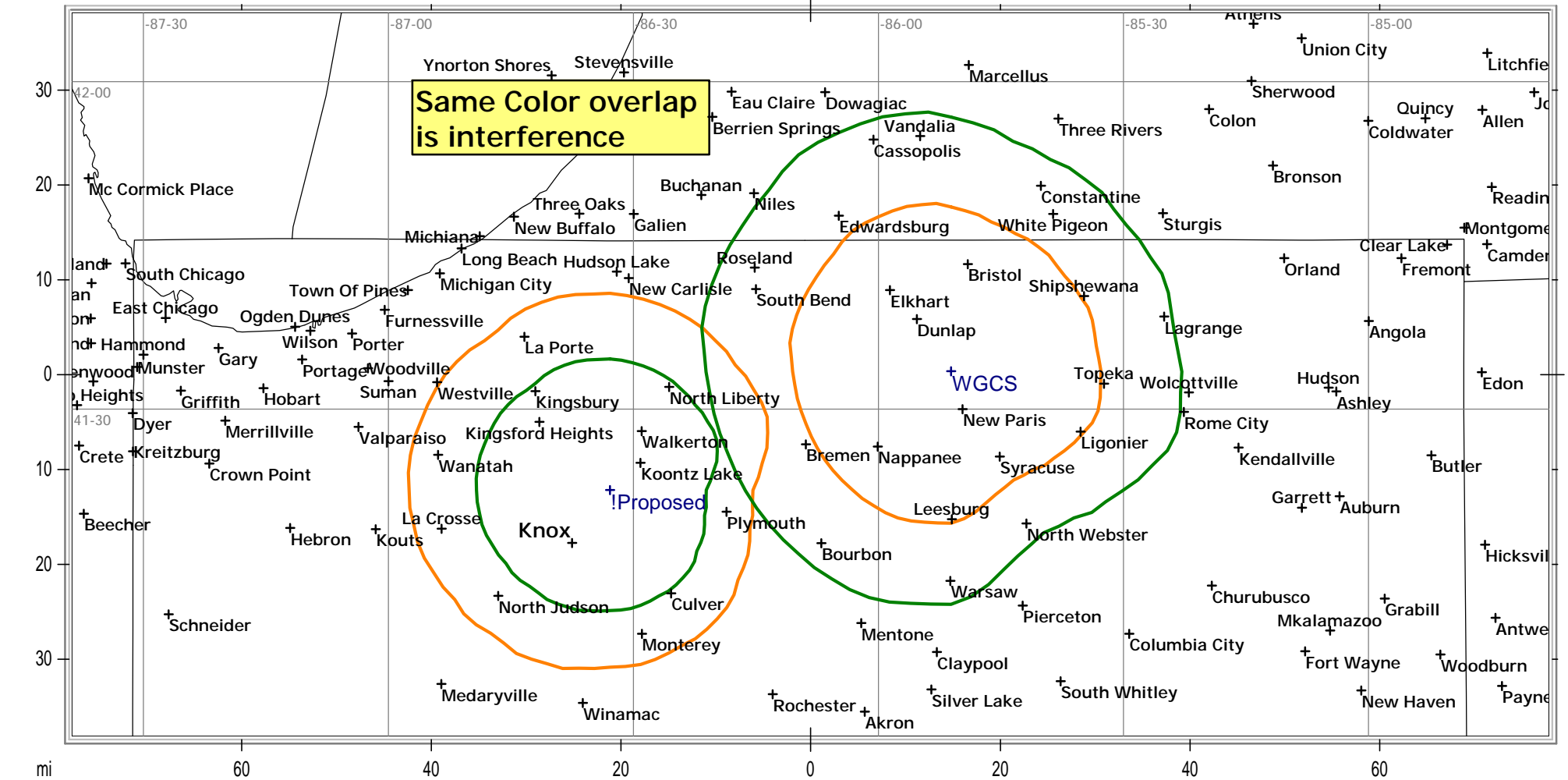
First Licensed NCEFM Service to the Community of Knox, IN.

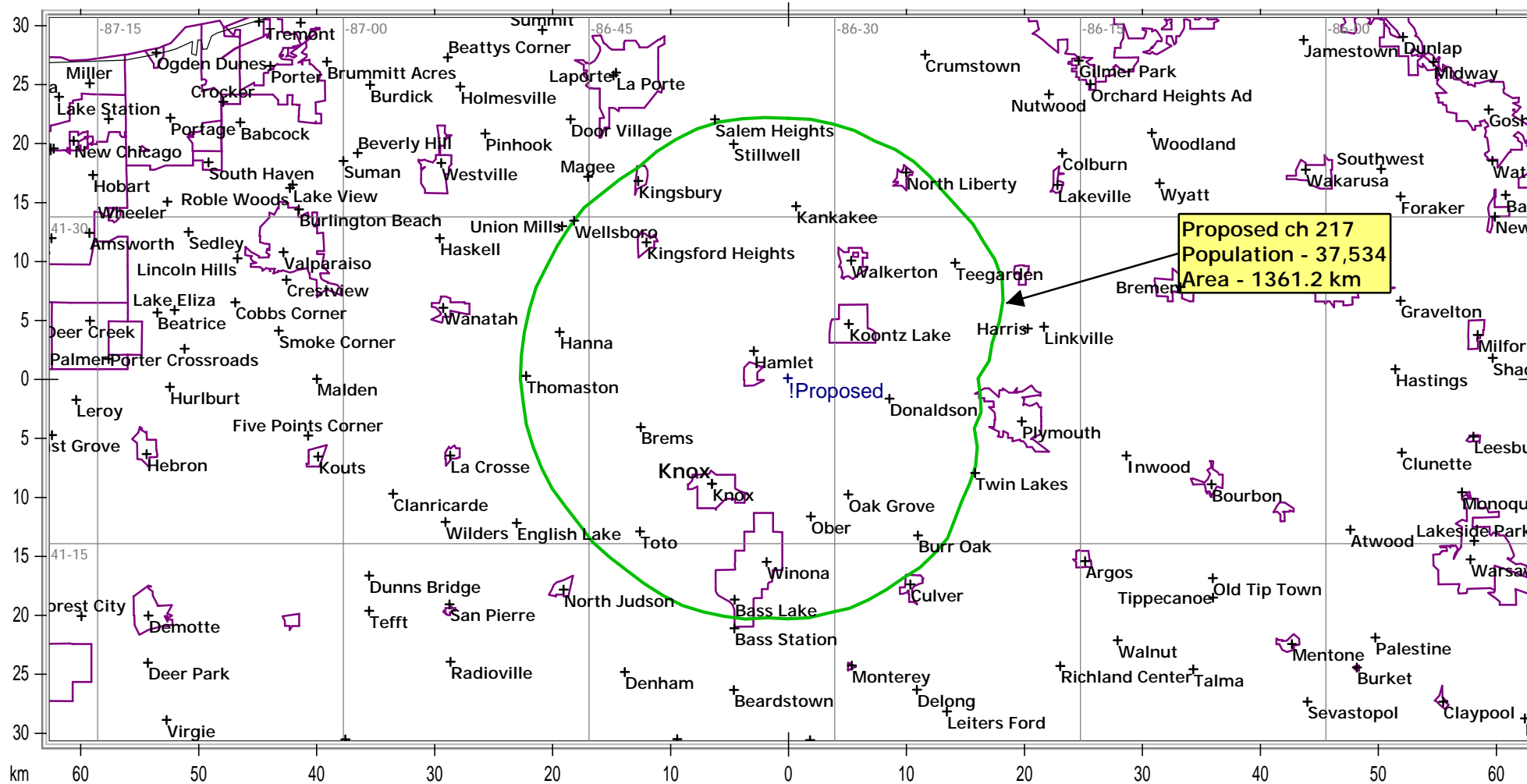
**EXHIBIT B
PROPOSED KNOX,IN
CH 217 STUDY**

Call Sign	ST	City	Freq.	Ch#	ERP [W]	Class	Status	Distance [mi]	Sep	Clr
WDXN-LD	IL	DIXON	82.1	6	300	TV	CP	143.87	0	0
WDMY-LP	OH	TOLEDO	82.1	6	3000	TV	CP	165.57	0	0
WGCS	IN	GOSHEN	91.1	216	6000	A	LIC	38.24	44.74	0.32 dB
WDMY-LP	OH	TOLEDO	82.1	6	1500	TV	APP	133.55	0	0
WRME-LD	IL	CHICAGO	82.1	6	3000	TV	LIC	66.33	0	0
WRME-LD	IL	CHICAGO	82.1	6	3000	TV	LIC	66.33	0	0
WDMY-LP	OH	TOLEDO	82.1	6	1500	TV	CP	133.55	0	0
WJCZ	IL	MILFORD	91.3	217	50000	B	CP MOD	91.98	110.6	1.76 dB
WBEZ	IL	CHICAGO	91.5	218	5700	B	LIC	66.33	70.21	1.71 dB
WBEZ	IL	CHICAGO	91.5	218	5600	B	LIC	66.33	70.21	1.75 dB
WBEZ	IL	CHICAGO	91.5	218	8400	B	CP MOD	66.33	70.21	2.12 dB
WBEZ	IL	CHICAGO	91.5	218	7500	B	CP MOD	66.33	70.21	2.04 dB
WCSG	MI	GRAND RAPIDS	91.3	217	37000	B	LIC	108.31	110.6	3.51 dB
WJCZ	IL	MILFORD	91.3	217	25000	B1	LIC	91.98	88.86	4.77 dB
WAUS	MI	BERRIEN SPRINGS	90.7	214	50000	B	LIC	41.65	42.87	6.15 dB
WJCO	IN	MONTPELIER	91.3	217	6000	A	CP MOD	86.66	71.46	8.49 dB
WETL	IN	SOUTH BEND	91.7	219	3000	A	LIC	23.43	19.26	9.41 dB
WCKZ	IN	ORLAND	91.3	217	2000	A	LIC	79.36	71.46	9.12 dB
WCSG	MI	GRAND RAPIDS	91.3	217	10000	B	LIC	108.31	110.6	10.78 dB
WJCO	IN	MONTPELIER	91.3	217	350	A	LIC	86.64	71.46	11.51 dB
WNDY	IN	CRAWFORDSVILLE	91.3	217	2200	A	LIC	93.39	71.46	12.04 dB
WVAV	MI	VICKSBURG	91.5	218	20000	B1	LIC	73.73	59.65	13.29 dB
WNIW	IL	LA SALLE	91.3	217	36000	B	LIC	141.82	110.6	14.46 dB
WHJE	IN	CARMEL	91.3	217	400	A	LIC	99.01	71.46	15.55 dB
WJHS	IN	COLUMBIA CITY	91.5	218	2650	A	LIC	56.69	44.74	15.09 dB
WJHS	IN	COLUMBIA CITY	91.5	218	3500	A	CP MOD	56.97	44.74	15.26 dB
WWHI	IN	MUNCIE	91.3	217	380	A	LIC	100.76	71.46	16.24 dB
WBEK	IL	KANKAKEE	91.1	216	2600	A	LIC	70.7	44.74	18.01 dB
WGTE-FM	OH	TOLEDO	91.3	217	13500	B	LIC	162.78	110.6	20.73 dB
WCYT	IN	LAFAYETTE TOWNSHIP	91.1	216	1500	A	CP MOD	70.37	44.74	20.91 dB
WCNB	IN	DAYTON	91.5	218	4200	A	LIC	75.73	44.74	20.79 dB
WTZY	IL	WONDER LAKE	91.3	217	4000	A	LIC	122.48	71.46	20.91 dB
WCYT	IN	LAFAYETTE TOWNSHIP	91.1	216	125	A	LIC	71.52	44.74	21.83 dB
WWDL	IN	PLAINFIELD	91.3	217	295	A	LIC	118.06	71.46	21.24 dB
WWQI	IN	MORRISTOWN	91.3	217	14500	B1	LIC	132.78	88.86	23.84 dB
WJCY	IN	CICERO	91.5	218	5000	A	CP MOD	84.23	44.74	23.43 dB
WFWR	IN	ATTICA	91.5	218	165	A	LIC	84.1	44.74	24.62 dB
WYSO	OH	YELLOW SPRINGS	91.3	217	36000	B	LIC	175.41	110.6	25.38 dB
WIRE	IN	LEBANON	91.1	216	3200	A	LIC	90.79	44.74	25.66 dB
WJCY	IN	CICERO	91.5	218	475	A	LIC	84.24	44.74	25.04 dB
WIRE	IN	LEBANON	91.1	216	140	A	LIC	90.79	44.74	26.50 dB
WGTD	WI	KENOSHA	91.1	216	3200	A	LIC	108.27	44.74	28.71 dB
WQSG	IN	LAFAYETTE	90.7	214	17000	B1	LIC	69.45	29.83	29.97 dB

Sheet1

WGTD	WI	KENOSHA	91.1	216	680	A	LIC	108.27	44.74	30.32 dB
WIWC	IN	KOKOMO	91.7	219	2100	A	LIC	55.11	19.26	31.92 dB
WJCH	IL	JOLIET	91.9	220	50000	B	LIC	89.65	42.87	31.51 dB
WFHB	IN	BLOOMINGTON	91.3	217	1600	A	LIC	162.5	71.46	31.12 dB
WOES	MI	OVID-ELSIE	91.3	217	550	A	LIC	159.87	71.46	32.63 dB
WBIE	OH	DELPHOS	91.5	218	5500	A	LIC	123.11	44.74	32.50 dB
WPCJ	MI	PITTSFORD	91.1	216	270	A	LIC	113.11	44.74	33.69 dB
WEDM	IN	INDIANAPOLIS	91.1	216	180	A	LIC	113.14	44.74	33.48 dB
WBSH	IN	HAGERSTOWN	91.1	216	8000	B1	LIC	121.88	59.65	34.98 dB
WCIC	IL	PEKIN	91.5	218	47000	B	LIC	167.78	70.21	34.12 dB
WSTM	WI	KIEL	91.3	217	1100	A	LIC	179.51	71.46	34.49 dB
WGRE	IN	GREENCASTLE	91.5	218	800	A	LIC	121.07	44.74	35.47 dB
WILV	IL	LOVES PARK	91.1	216	7000	B1	LIC	142.91	59.65	36.35 dB
WQKO	IN	HOWE	91.9	220	1600	A	LIC	64.77	19.26	36.85 dB
WRFT	IN	INDIANAPOLIS	91.5	218	130	A	LIC	120.65	44.74	36.23 dB
WVSH	IN	HUNTINGTON	91.9	220	920	A	LIC	63.6	19.26	37.05 dB
WGMR	IL	EFFINGHAM	91.3	217	620	A	LIC	187.99	71.46	37.95 dB
WBSW	IN	MARION	90.9	215	2400	A	LIC	68.52	19.26	38.23 dB
WJEF	IN	LAFAYETTE	91.9	220	250	A	LIC	69.67	19.26	38.34 dB





 State Borders
 City Borders
 Lat/Lon Grid

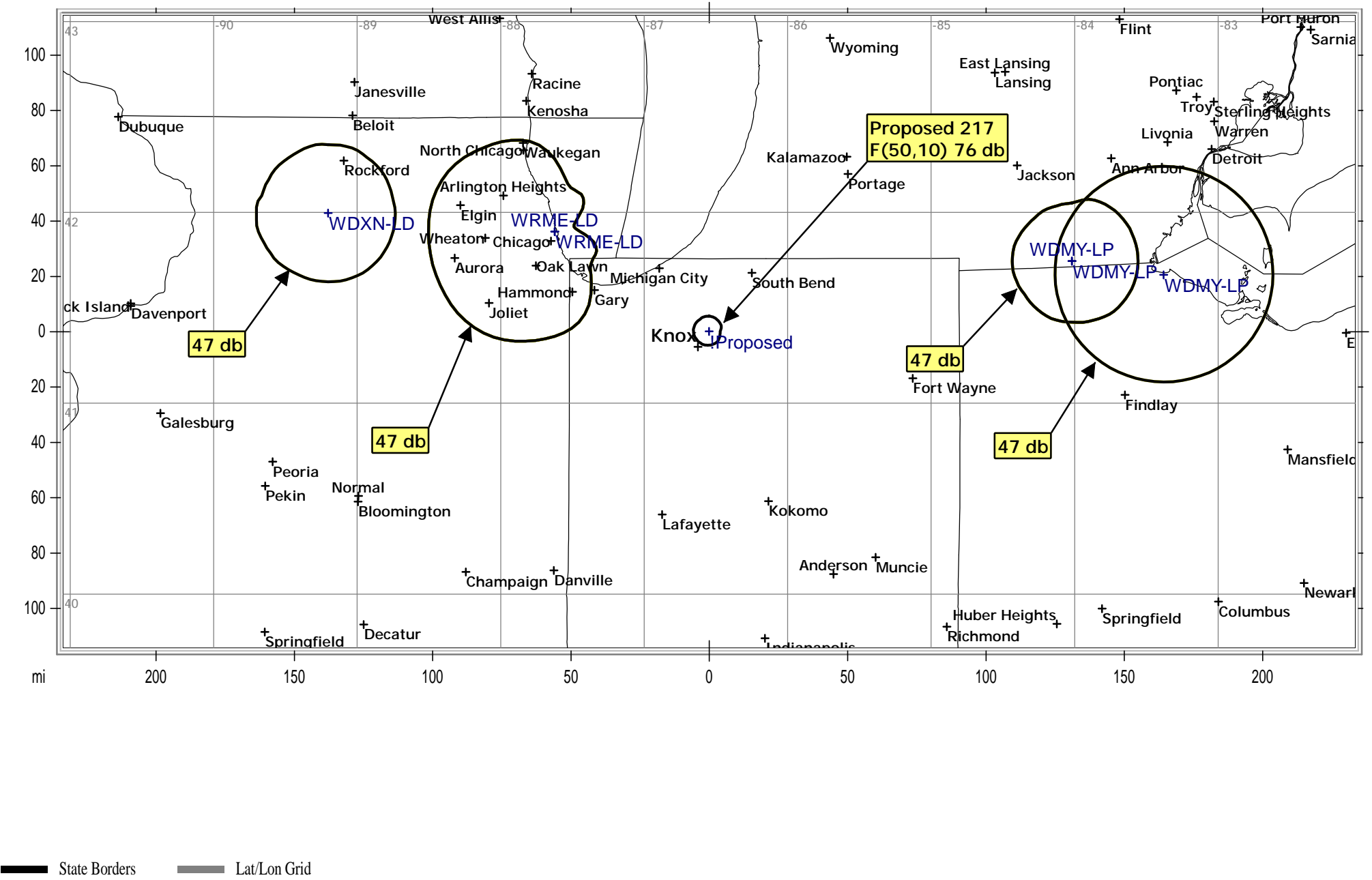
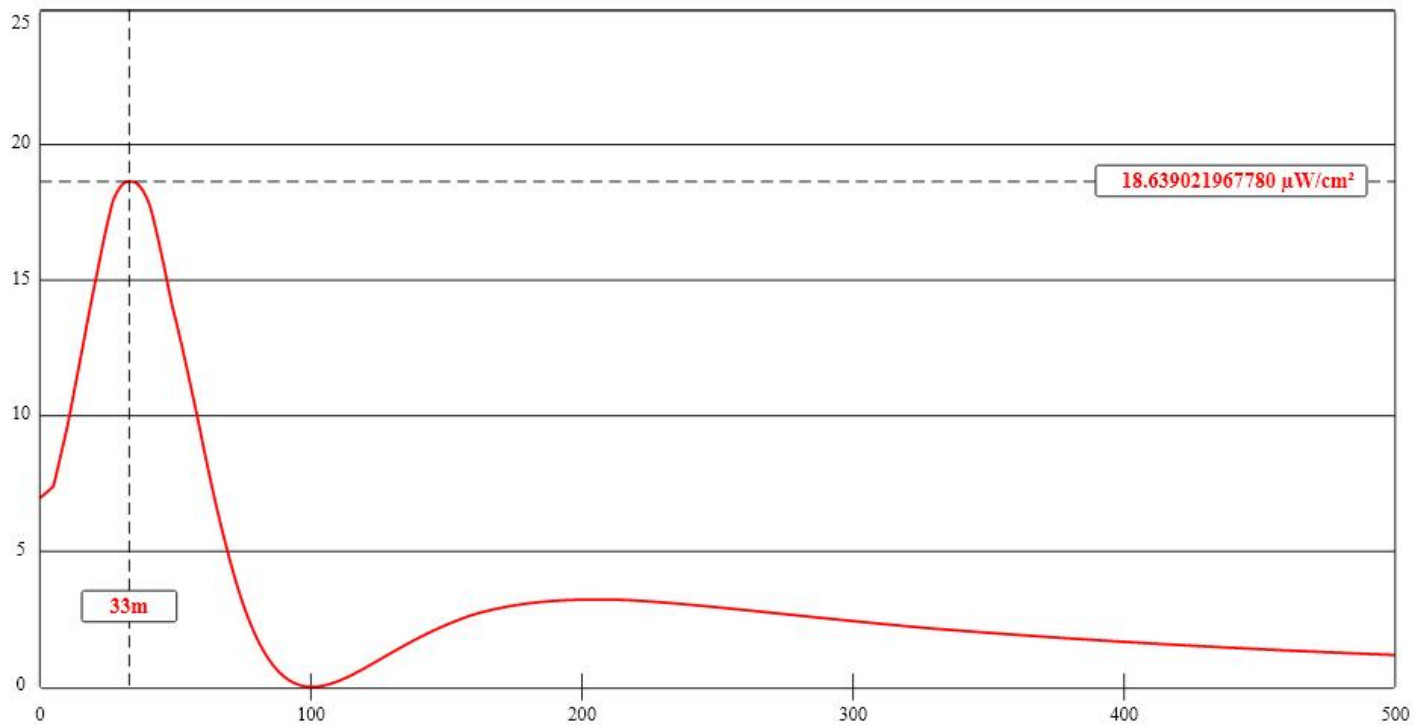


EXHIBIT F RFE



View Tabular Results +

Channel Selection	Channel 217 (91.3 MHz) ▾		
Antenna Type +	EPA Type 2: Opposed V Dipole ▾		
Height (m)	<input type="text" value="60"/>	Distance (m)	<input type="text" value="500"/>
ERP-H (W)	<input type="text" value="5000"/>	ERP-V (W)	<input type="text" value="5000"/>
Num of Elements	<input type="text" value="2"/>	Element Spacing (λ)	<input type="text" value="1"/>
Num of Points	<input type="text" value="500"/>	<input type="button" value="Apply"/>	

EXHIBIT G

Aerial of Site

Legend

- ?? Oregon Davis High School
- 1220216

