

**NEW, Soledad, CA FAC# 767193**  
**Method of Calculating Technical Parameters**  
**11/7/2021**

The new area served (1886.8 km<sup>2</sup>) and the population served (16,394) listed in technical parameters were calculated using ComStudy 2.2 with U.S. Census 2010 population data. The parameters of the study are listed below in Figure 1.

The area served and the population served within the 60 dBμ F(50,50) contour were calculated as listed in Figure 2.

Param	Value [m]	Terrain	dBase
AGL	12.00		45.00
G-AMSL	1182.00	1184.00 m	1035.00
RC-AMSL	1194.00		1080.00
HAAT	518.82	518.82	782.00

**Figure 1. Technical Parameters of Study**

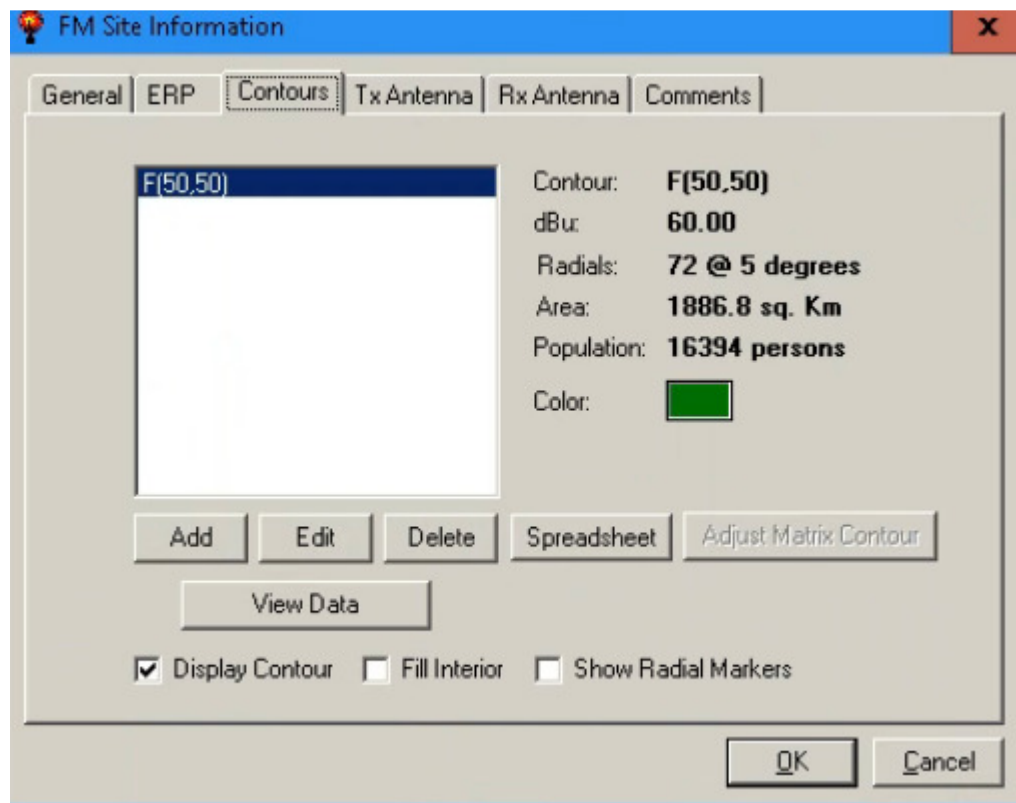


Figure 2. Area and Population Calculations within 60 dBμ F(50,50) contour.