

FCC Form 2100 Schedule 340
NEW NCE FM Station
GRACE COMMUNITY CHURCH OF AMARILLO
Farwell TX

All Purpose Technical Exhibit

Eligibility

The applicant was previously granted a license BLED- 20080609ACU which has already established the Educational Objectives of the applicant herein.

Other Authorizations

The attached is a complete listing of the facilities owned by the applicant. The applicant shares a board member with Radio By Grace, Inc. and that licensee's ownership is also listed.

Fair Distribution of Service

There is no first or second noncommercial service area created as a result of the proposed facility which includes a population of 2,000 persons.

Point System Factors / Tiebreakers

The applicant is replacing an existing translator with the proposed facility, hence there is no Fair Distribution point being sought.

Technical Certifications:

Site Assurance for the application is based on written lease currently held with KOB-TV, owner of the tower herein. The applicant is utilizing this tower currently for translator K201CY.

Interference

The attached map of contours is an accurate depiction of the facility landscape and demonstrates that the proposed facility meets all contour protection requirements. The map utilizes FCC 30 Second Terrain for contour calculations.

Other Authorizations

The applicant herein is also the licensee of the following Stations and translators:

Grace Community Church of Amarillo

Calls	Frequency	City	State	FACID
KRBG(FM)	88.7 MHz	Umbarger	TX	93643
KBZD(FM)	99.7 MHz	Amarillo	TX	33449
K213EW	90.5 MHz	San Angelo	TX	91707
K201CY	88.1 MHz	Clovis	NM	10895
K284BH	104.7 MHz	Amarillo	TX	142022
K227BJ	93.3 MHz	Plainview	TX	142024
K272EM	102.3 MHz	Amarillo	TX	149696
K280EU	103.9 MHz	Amarillo	TX	153628
K204GQ	88.7 MHz	Dalhart	TX	154894
K204GP	88.7 MHz	Dumas	TX	154898
K204GO	88.7 MHz	Pampa	TX	154954
K204FP	88.7 MHz	Childress	TX	154969
K201HZ	88.1 MHz	Tulia	TX	154998
K207FF	89.3 MHz	Big Spring	TX	92372
K271DE	102.1 MHz	Lubbock	TX	142023
K269HH	101.7 MHz	New Deal	TX	142374
K278DB	103.5 MHz	Dumas	TX	153644
K204GS	88.7 MHz	Borger	TX	154856
K296EW	96.3 MHz	Pampa	TX	155727

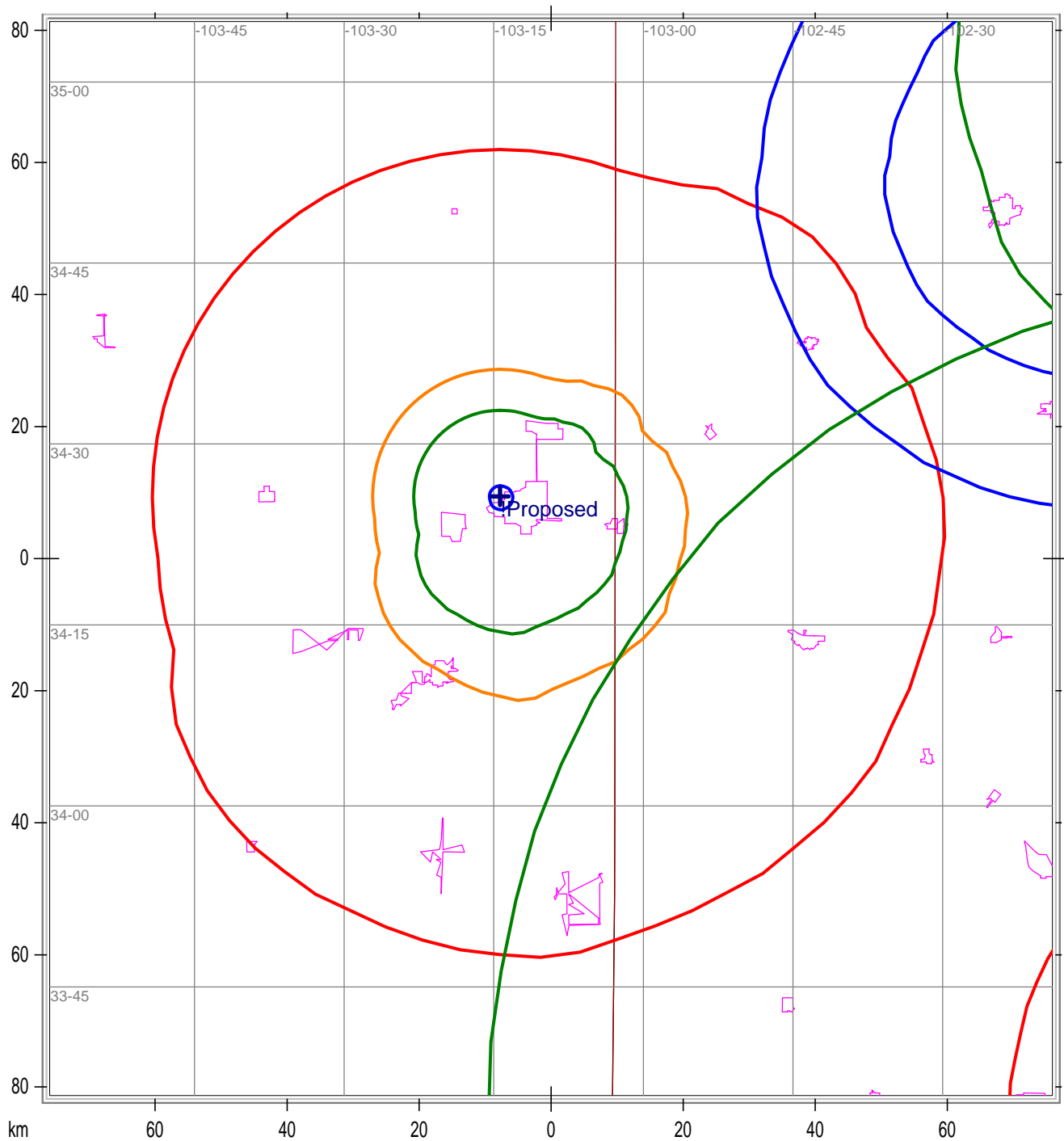
Radio By Grace, Inc. is the licensee of the following:

Calls	Frequency	City	State	FACID
WZXX(FM)	88.5 MHz	Lawrenceburg	TN	89511
WLOG(FM)	89.1 MHz	Markleysburg	PA	91030
WTSE(FM)	91.1 MHz	Benton	TN	93012
WHHR(FM)	92.1 MHz	Vienna	GA	165954
WKIH(FM)	90.3 MHz	Vidalia	GA	172182
WJEP(FM)	91.1 MHz	Cusseta	GA	177011
W288DD	105.5 MHz	Tamarac	FL	138594
W268AA	101.5 MHz	Falling Water	TN	58442
W233AP	94.5 MHz	Oakland Park	FL	139105
W276CZ	103.1 MHz	Saginaw	MI	140015
W227CI	93.3 MHz	Catlettsburg	KY	141051
K284CV	104.7 MHz	Whitefish	MT	141979
W219DM	91.7 MHz	Lexington	KY	144206
K222BM	92.3 MHz	Moapa	NV	144580
K228FL	93.5 MHz	Kimberly	ID	146174
K232CI	94.3 MHz	Missoula	MT	146259

Calls	Frequency		City	State	FACID
K296GT	107.1 MHz	FM	Mt Lemmon	AZ	147206
W276DD	103.1 MHz	FM	Cincinnati	OH	147546
K237DZ	95.3 MHz	FM	Missoula	MT	147617
K242CI	96.3 MHz	FM	Casper	WY	148047
K268CO	101.5 MHz	FM	Lake Los Ange	CA	148497
W259CA	99.7 MHz	FM	Cuthbert	GA	148541
W247CJ	97.3 MHz	FM	Manchester	GA	148547
W253BK	98.5 MHz	FM	Winchester	KY	148885
W261CE	100.1 MHz	FM	Southaven	MS	149153
W222BF	92.3 MHz	FM	Cochran	GA	149343
W287CG	105.3 MHz	FM	Augusta	GA	150276
K286BU	105.1 MHz	FM	Idaho Falls	ID	150295
W285FJ	104.9 MHz	FM	Aiken	SC	150411
W286AY	105.1 MHz	FM	Charleston	SC	150415
W270CE	101.9 MHz	FM	Rome	GA	150667
W261BX	100.1 MHz	FM	Birmingham	AL	150818
W280EI	103.9 MHz	FM	Montgomery	AL	150858
W248BO	97.5 MHz	FM	Tuscaloosa	AL	150864
W266CM	101.1 MHz	FM	Mobile	AL	150912
W281AM	104.1 MHz	FM	Macclenny	FL	151393
K279CH	103.7 MHz	FM	Pocatello	ID	151720
W232BI	94.3 MHz	FM	Albany	A	151736
W224AZ	92.7 MHz	FM	Chattanooga	TN	151761
K294CR	106.7 MHz	FM	Tucson	AZ	152140
W257DF	99.3 MHz	FM	Atlanta	GA	152237
K248BZ	97.5 MHz	FM	Kimberly	ID	152272
K239BN	95.7 MHz	FM	Idaho Falls	ID	152313
K284DA	104.7 MHz	FM	Clovis	NM	152832
K208FC	89.5 MHz	FM	Arabi	LA	153127
W292EE	106.3 MHz	FM	Augusta	GA	153230
W285DV	104.9 MHz	FM	Charleston	SC	153420
K296GZ	107.1 MHz	FM	Muscatine	IA	153605
W282CA	104.3 MHz	FM	Richmond	VA	154008
K289CF	105.7 MHz	FM	Kalispell	MT	155031
W292EL	106.3 MHz	FM	Memphis	TN	155668
W291CL	106.1 MHz	FM	Richmond	VA	155800
K235BT	94.9 MHz	FM	Fort Collins	CO	155948
K239BR	95.7 MHz	FM	Pocatello	ID	157876
WHHR(FM)	92.1 MHz	FM	Vienna	GA	165954
WKIH(FM)	90.3 MHz	FM	Vidalia	GA	172182
WJEP(FM)	91.1 MHz	FM	Cusseta	GA	177011
W203BI	88.5 MHz	FM	Bowling Green	KY	64266
W218CC	91.5 MHz	FM	Wausau	WI	73057
W209CF	89.7 MHz	FM	Gulfport	MS	77029
W217AQ	91.3 MHz	FM	Meridian	MS	78018
W214BE	90.7 MHz	FM	Raymond	MS	91873

<u>Calls</u>	<u>Frequency</u>		<u>City</u>	<u>State</u>	<u>FACID</u>
K204DI	88.7 MHz	FM	Hot Springs	AR	92408
W220DS	91.9 MHz	FM	Montgomery	AL	121804
K253CA	98.5 MHz	FM	Eagle River	AK	138494
W290CA	105.9 MHz	FM	Cleveland	TN	140986
K212FU	90.3 MHz	FM	Lewistown	MT	141964
W212BY	90.3 MHz	FM	Brunswick	GA	142658
W219DI	91.7 MHz	FM	Morehead	KY	143879
W204CM	88.7 MHz	FM	Waycross	GA	146657
K240DE	95.9 MHz	FM	Sioux City	IA	146700
W214BZ	90.7 MHz	FM	Savannah	GA	148330
W219DH	91.7 MHz	FM	Macon	GA	148623
K218EA	91.5 MHz	FM	Ottumwa	IA	148639
K219KS	91.7 MHz	FM	Maryville	MO	149124
W218CY	91.5 MHz	FM	Manistee	MI	149168
K250BP	97.9 MHz	FM	Evergreen	MT	149287
K208EW	89.5 MHz	FM	Lovelock	NV	149480
K300AZ	107.9 MHz	FM	Twin Falls	ID	150127
W273CT	102.5 MHz	FM	Canton	GA	150660
W209CG	89.7 MHz	FM	Tallapoosa	GA	150669
K216GA	91.1 MHz	FM	Chanute	KS	150677
W258AY	99.5 MHz	FM	Mobile	AL	150854
K210DV	89.9 MHz	FM	De Queen	AR	151020
K206ED	89.1 MHz	FM	Le Mars	IA	152205
W209CD	89.7 MHz	FM	Atlanta	GA	152214
W201DJ	88.1 MHz	FM	Douglas	GA	152243
W206BP	89.1 MHz	FM	Dublin	GA	152259
K208FB	89.5 MHz	FM	Burley	ID	152545
K245CH	96.9 MHz	FM	Grangeville	ID	152576
K220JL	91.9 MHz	FM	Walla Walla	WA	155099
K213EL	90.5 MHz	FM	Laramie	WY	155214
K262CI	89.1 MHz	FM	Tacoma	WA	155285

Map of Interfering Contours



Proposed Facility:

Blue - 100dBu(50,10)

Green - 60dBu(50,50)

Orange - 54dBu(50,10)

Red - 40dBu (50,10)

.

Other Facilities

Co-Channel

Red - 60dBu (50,50) Green - 40dBu (50,10)

First Adjacent

Orange - 60dBu (50,50) Green - 54dBu (50,10)

Second/Third Adjacent

Blue - 60dBu (50,50) Green - 100dBu (50,10)

I.F. Separation - Brown