

Broadcast Facility Details

NEW 203A Rockland, MI

The FM Channel Study demonstrates that the proposed facility is in compliance with §73.203, §73.207, §73.213, §73.509 and §73.525.

FM Channel Study

New NCE-FM Gospel Opportunities, Inc											
REFERENCE 46 41 58.69 N. 89 13 53.86 W.		CH#	203A	-	88.5 MHz,	Pwr= 0.9 kw,	HAAT= 131.6 M,	COR= 439 M	Average Protected F(50-50)= 20.74 km		
Omni-directional										DISPLAY DATES DATA 10-27-21 SEARCH 11-02-21	
CH CITY	CALL	TYPE	ANT STATE	AZI <--	DIST FILE #	LAT LNG	PWR(kw) HAAT(M)	INT(km) COR(M)	PRO(km) LICENSEE	*IN* (Overlap in km)	*OUT*
203D Ontonagon	WOAS	LIC _CN	MI	345.0 165.0	20.17 BLED19781201AA	46 52 29.70 89 18 00.50	0.009 18	9.9 221	3.1 Ontonagon Area School Dist	-14.5*<	-56.3*<
204C1 Minocqua	WQMN	APP _CN	WI	199.8 19.5	83.64 0000162775	45 59 28.70 89 35 53.60	50.000 67	60.8 571	36.8 Radio 74 Internationale	5.9	21.8
202C1 Michigamme	WKPK	APP _VN	MI	94.4 275.5	123.76 0000162677	46 36 14.10 87 37 15.10	40.000 285	85.9 666	58.3 Northland Community Broadc	14.2	30.1
202C2 Michigamme	WKPK	LIC _VN	MI	94.4 275.5	123.75 BLED20080711ACT	46 36 13.80 87 37 15.50	15.000 252	69.2 633	46.8 Northland Community Broadc	31.0	41.6
202A Ironwood	WKIW	LIC _VN	MI	248.9 68.2	78.94 BLED20080716AGQ	46 26 27.80 90 11 26.60	0.300 157	23.3 600	15.5 Educational Media Foundati	41.0	41.5
204C3 Grand Marais	WMLS	LIC _CN	MN	325.1 144.3	145.69 BLED20020411AAK	47 46 03.60 90 20 47.40	6.000 194	73.0 537	49.0 Minnesota Public Radio	48.6	60.6
06 -- Merrill	W06DL-D<	CP DHN	WI	188.6 8.3	166.65 0000152902	45 12 59.70 89 32 53.01	3.000	26.5 458	11.1	37.6R	129.0M

Terrain database is FCC NGDC 30 Sec , R= 73.215 qualifying spacings or FCC minimum Spacings in KM, M= Margin in KM
 Contour distances are on direct line to and from reference station. Reference zone= - Zone 2, Co to 3rd adjacent.
 All separation margins (if shown) include rounding. Call signs with strikeout need not be protected.
 Ant Column: (D= DA Standard, Z= DA 73.215, N= Not DA 73.215, _= Omni), Polarization (C,H,V,E), Beamtilt(Y,N,X)
 "*"affixed to 'IN' or 'OUT' values = site inside restricted contour.
 < = Station meets FCC minimum distance spacing for its class.
 < = Contour Overlap
 Reference station has protected zone issue: Canada

Although this instant application would bump WOAS (203D) off of its currently licensed channel, there are more than 50 other channels available for its use.

Protected zones report for NEW! on channel 203A 11-03-2021
 Lat. 46 41 58.7 Lng. 89 13 53.9, ERP= 0.9 kw, HAAT= 131.55 m

*** Station must likely coordinate with Canada. Distance to border = 142.6 km.

Facility is okay with respect to AM station towers.

Closest AM Facility is WMPL, HANCOCK, MI, L, ND1 at 47.2° at a distance of 66.1 km

Facility is okay with respect to FCC monitoring stations.

Closest FCC Monitoring Station is 523.9 km= Allegan, MI

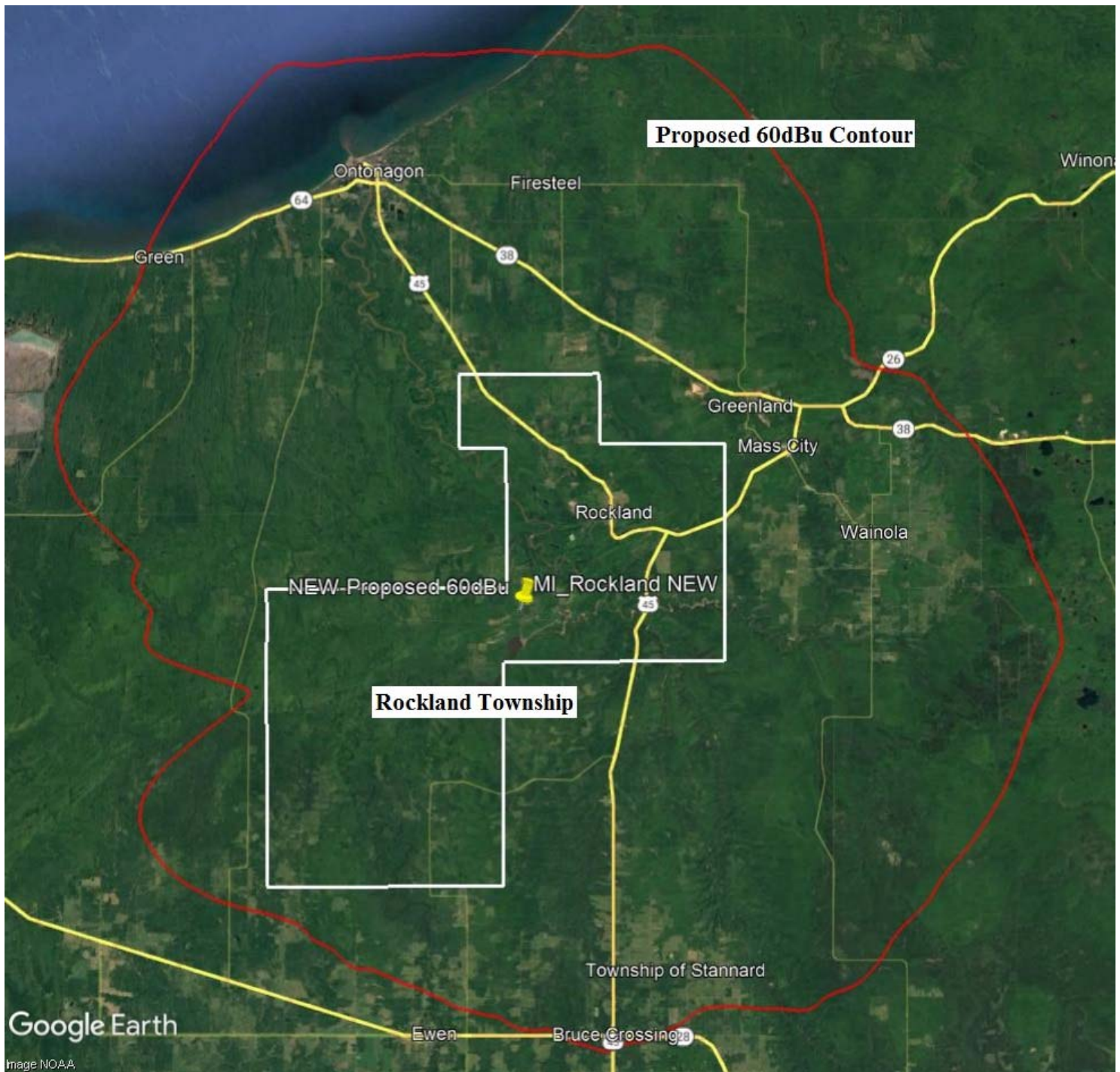
Facility is okay toward West Virginia Quiet Zone. Distance to center = 1222.4 km

Facility is okay toward Table Mountain. Distance to Center = 1487.5 km, Azimuth = 246.3 Degrees True

Broadcast Facility Details NEW 203A Rockland, MI

The NCE-FM City of License Contour Map shows compliance with §73.515. Since the proposed facility is for a reserved channel, §73.315 does not apply.

NCE-FM City of License Contour Map



Broadcast Facility Details NEW 203A Rockland, MI

Although Rockland, MI is an unincorporated township having a population of only 185¹. Rockland has its own:

- post office²,
- museum³,
- library⁴,
- volunteer fire department⁵,
- Township Office⁶,
- groceries at Rockland Depot/General Store⁷,
- food at Henry's Inn⁸,
- a Catholic church⁹ and
- a Methodist church¹⁰.

¹ <https://michigan.quickcityinfo.com/Rockland/Census>

² Zipcode 49960

³ <https://hsmichigan.org/resources/local-historical-organizations/rockland-township-historical-museum/>

⁴ <https://librarytechnology.org/library/19700>

⁵ <https://fire-departments.org/fire-department/rockland-fire-department-michigan.html>

⁶ <https://www.yellowpages.com/rockland-mi/mip/rockland-township-office-1366068>

⁷ <https://rockland-general-store.hub.biz/>

⁸ https://www.tripadvisor.com/Restaurant_Review-g42647-d541742-Reviews-Henry_s_Inn-Rockland_Upper_Peninsula_Michigan.html

⁹ <https://www.dioceseofmarquette.org/stmaryrockland>

¹⁰ <https://www.umc.org/en/find-a-church/church?id=52712>