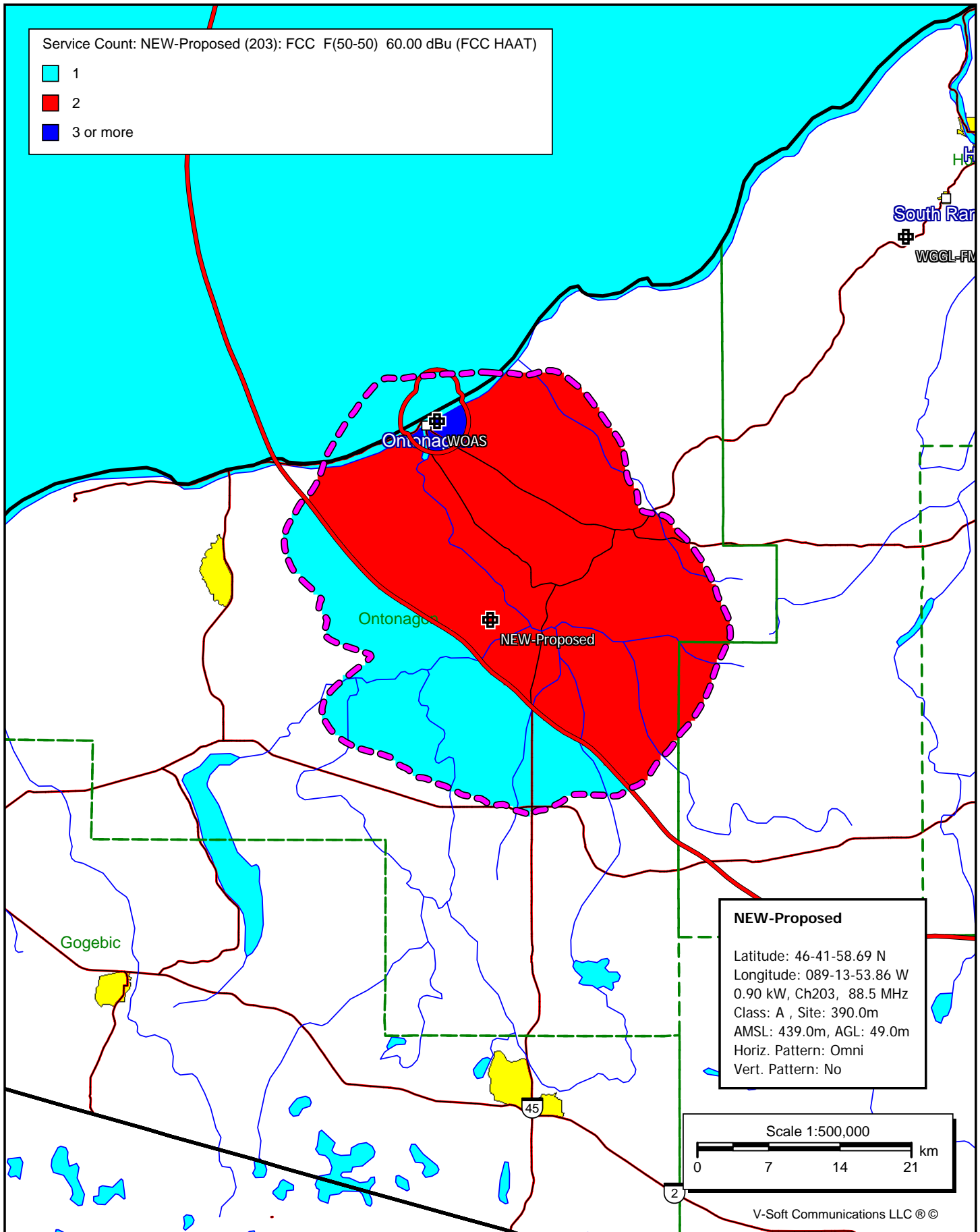


# NEW 203A Rockland, MI Fair Distribution of Service



Service Count Population Report - Service Count: NEW-Proposed (203): FCC  
F(50-50) 60.00 dBu (FCC HAAT)

Reference Area: NEW-Proposed (203): FCC F(50-50) 60.00 dBu (FCC HAAT)  
Counting Grid Cell Size: 0.5 sq. km  
Population Database: 2010 US Census (PL)

Services Included in Count:

NEW-Proposed (203): FCC F(50-50) 60.00 dBu (FCC HAAT)  
WOAS (203): FCC F(50-50) 60.00 dBu (FCC HAAT)  
WGGL-FM (216): FCC F(50-50) 60.00 dBu (FCC HAAT)

Count Area	Population	Housing Units	Area (sq. km)
1 Service	626	513	378.59
2 Service	2,009	1,581	936.66
3 or more	1,636	999	39.06
Reference Area	4,271	3,093	1354.31

	Service Pop	Percent	Running Total	Running %
1 Service	626	14.7 %	626	14.7 %
2 Service	2,009	47.0 %	2,635	61.7 %
3 or more	1,636	38.3 %	4,271	100.0 %

-----

	Housing Units	Population
Michigan		
Houghton County		
Total	18,636	36,628
2 Service	1	0
Reference Area	1	0
Ontonagon County		
Total	5,672	6,780
1 Service	513	626
2 Service	1,580	2,009
3 or more	999	1,636
Reference Area	3,092	4,271