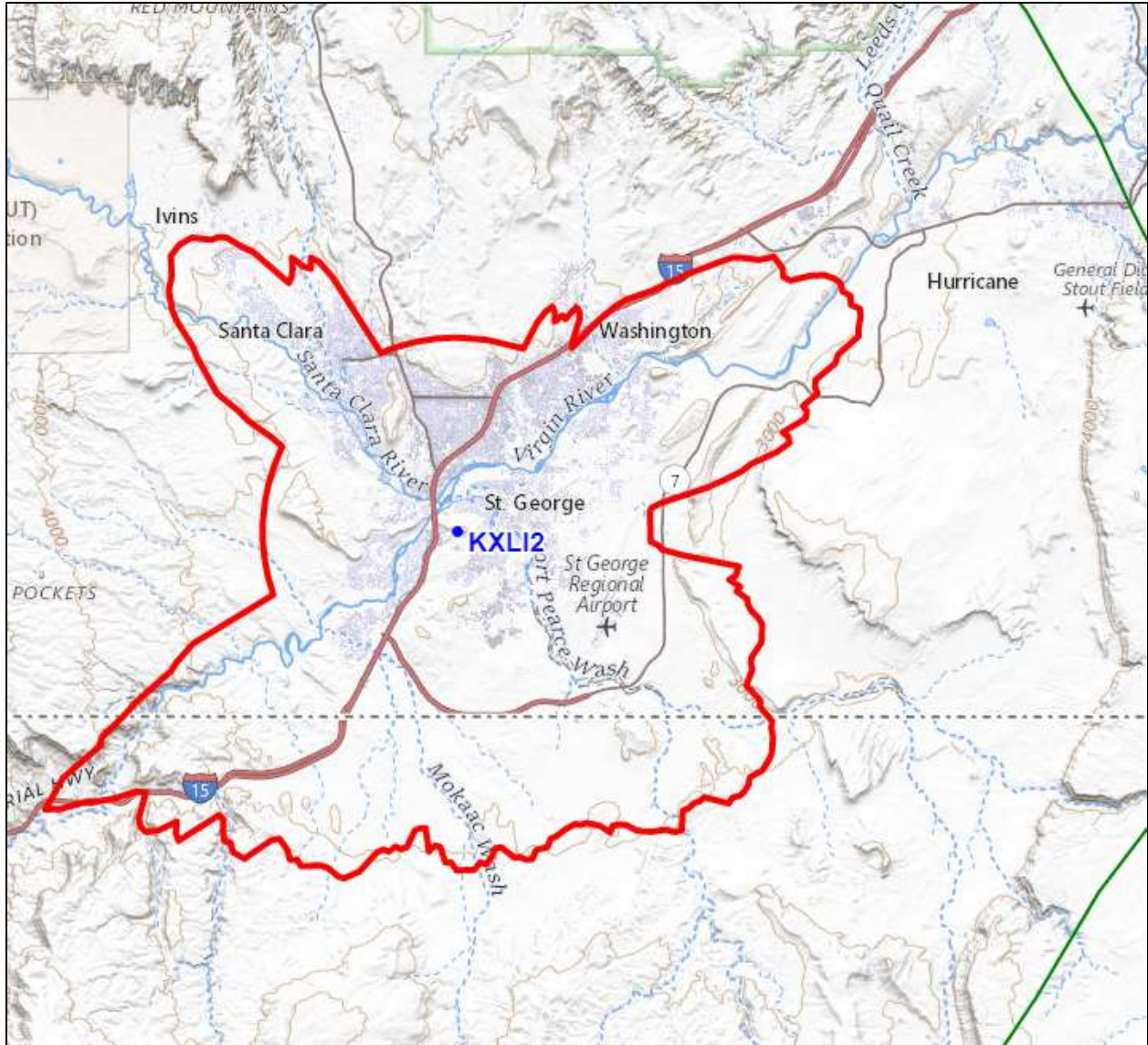




REC Networks/Michelle Bradley, CBT
11541 Riverton Wharf Rd.
Mardela Springs, MD 21837
844.REC.LPFM/202.621.2355
recnet.com

Original Construction Permit for KXLI (FB)
SAINT GEORGE, UT
RADIO ACTIVO BROADCASTING LICENSE, LLC

PROPOSED 60dBu F(50,50) SERVICE CONTOUR



SAINT GEORGE, UT – Channel 233D ~ 94.5 MHz ~ ERP 0.300 kW (V only)

Elev: 932.6 meters ~ RCAGL: 33 meters ~ RCAMSL: 965.6 meters

Overall tower height: 33.5 meters – ASR: 1240386

NAD83 Latitude: 37° 03' 49.9" NL – Longitude: 113° 34' 27.9" WL

NAD27 Latitude: 37° 03' 50.0" NL – Longitude: 113° 34' 25.1" WL

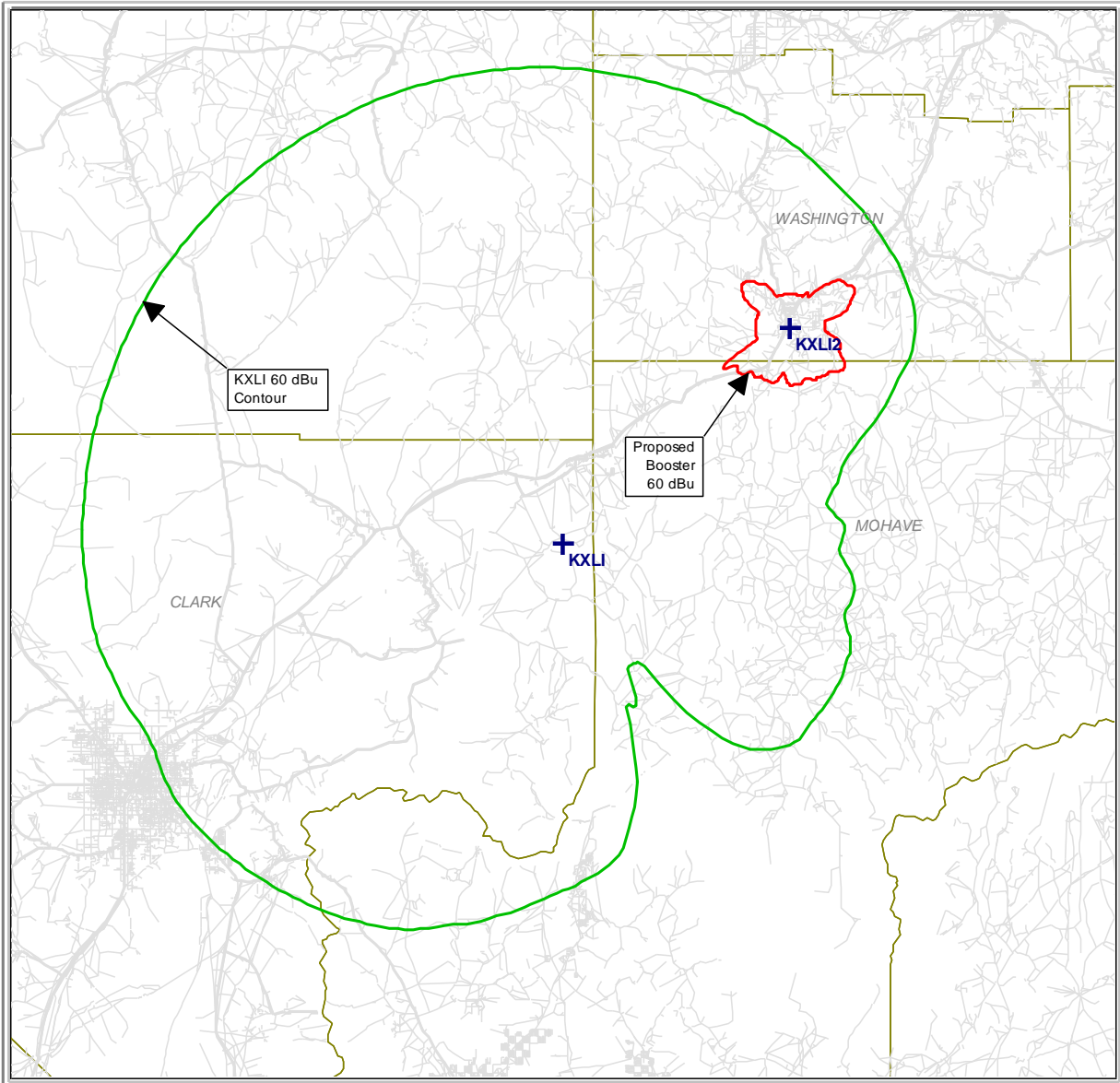
No AM stations within 3km

Nondirectional Facility

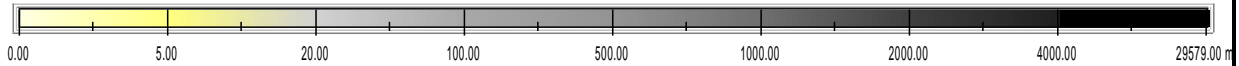
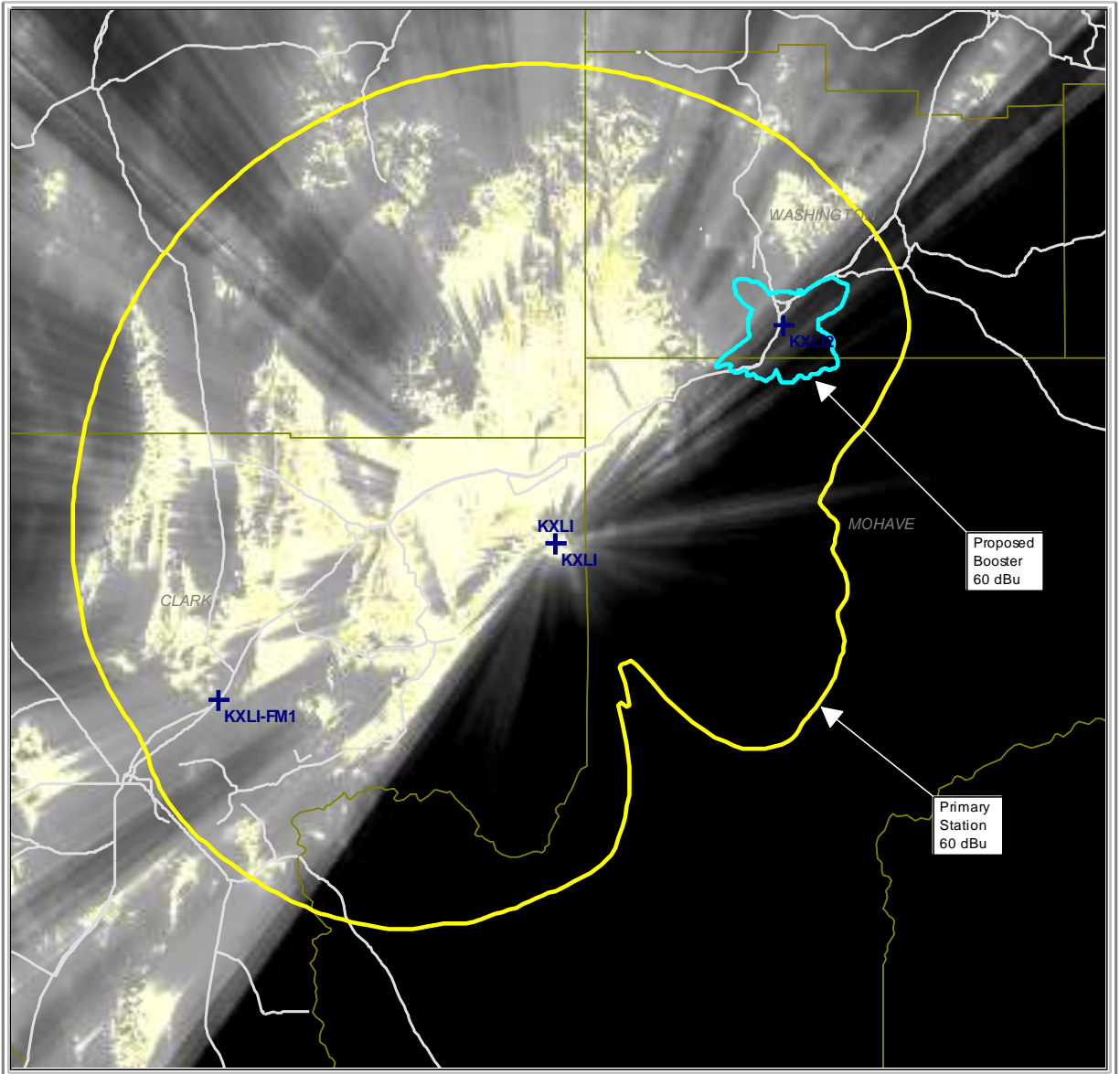
Site: KXLI2
 Coordinates: 37-03-50.0 N, 113-34-25.1 W
 Freq: 94.50000 MHz
 ERP: 300.00 W

Bearing	ERP W	HAAT	DH	Distance	Lat	Lon
0	300.00	-61	970	7.45	37.130852	-113.573639
5	300.00	-66	1170	7.45	37.130597	-113.566319
10	300.00	-68	1380	7.45	37.129834	-113.559054
15	300.00	-36	1510	7.45	37.128569	-113.551901
20	300.00	19	1770	7.45	37.126811	-113.544913
25	300.00	40	1760	8.57	37.133742	-113.532777
30	300.00	34	880	7.86	37.125129	-113.529288
35	300.00	56	580	10.28	37.139619	-113.507104
40	300.00	90	570	12.78	37.151874	-113.480972
45	300.00	121	540	14.82	37.158079	-113.455380
50	300.00	129	800	15.33	37.152446	-113.441115
55	300.00	140	860	16.05	37.146614	-113.425256
60	300.00	136	650	15.79	37.134796	-113.419369
65	300.00	116	590	14.52	37.118990	-113.425200
70	300.00	96	410	13.18	37.104362	-113.433931
75	300.00	65	560	11.01	37.089457	-113.453736
80	300.00	24	480	7.45	37.075488	-113.490983
85	300.00	3	610	7.45	37.069696	-113.490034
90	300.00	2	680	7.45	37.063859	-113.489721
95	300.00	26	740	7.45	37.058023	-113.490047
100	300.00	43	500	8.92	37.049917	-113.474652
105	300.00	62	620	10.79	37.038706	-113.456168
110	300.00	73	660	11.60	37.028156	-113.450883
115	300.00	71	550	11.46	37.020289	-113.456686
120	300.00	90	570	12.78	37.006372	-113.449029
125	300.00	113	590	14.32	36.989944	-113.441557
130	300.00	115	640	14.45	36.980264	-113.448980
135	300.00	102	670	13.60	36.977369	-113.465398
140	300.00	90	640	12.78	36.975832	-113.481187
145	300.00	92	480	12.91	36.968741	-113.490278
150	300.00	85	450	12.44	36.966953	-113.503607
155	300.00	90	490	12.78	36.959735	-113.512867
160	300.00	77	560	11.88	36.963504	-113.527916
165	300.00	76	770	11.81	36.961314	-113.539243
170	300.00	88	790	12.64	36.951906	-113.548931
175	300.00	86	790	12.51	36.951814	-113.561369
180	300.00	88	660	12.64	36.950181	-113.573639
185	300.00	67	850	11.16	36.963884	-113.584589
190	300.00	60	810	10.63	36.969738	-113.594417
195	300.00	84	610	12.37	36.956414	-113.609675
200	300.00	89	600	12.71	36.956471	-113.622561
205	300.00	89	800	12.71	36.960282	-113.634093
210	300.00	84	1060	12.37	36.967514	-113.643266
215	300.00	97	950	13.25	36.966213	-113.659212
220	300.00	88	1170	12.64	36.976749	-113.665129
225	300.00	117	870	14.58	36.971091	-113.689720
230	300.00	119	750	14.70	36.978827	-113.700435
235	300.00	122	370	14.88	36.987049	-113.710882
240	300.00	139	510	15.98	36.991903	-113.729520
245	300.00	63	540	10.87	37.022537	-113.684571
250	300.00	34	660	7.86	37.039671	-113.656897
255	300.00	19	670	7.45	37.046530	-113.654679
260	300.00	16	690	7.45	37.052232	-113.656269
265	300.00	15	630	7.45	37.058023	-113.657231
270	300.00	15	610	7.45	37.063859	-113.657557
275	300.00	4	770	7.45	37.069696	-113.657244
280	300.00	2	620	7.45	37.075488	-113.656295
285	300.00	0	850	7.45	37.081193	-113.654716
290	300.00	2	720	7.45	37.086766	-113.652520
295	300.00	5	670	7.45	37.092165	-113.649723
300	300.00	49	510	9.59	37.106976	-113.667296
305	300.00	81	370	12.15	37.126533	-113.685943
310	300.00	103	370	13.66	37.142806	-113.691711
315	300.00	109	590	14.05	37.153201	-113.685762
320	300.00	99	730	13.39	37.156129	-113.670794
325	300.00	77	780	11.88	37.151364	-113.650508
330	300.00	65	890	11.01	37.149626	-113.635754
335	300.00	44	700	9.04	37.137556	-113.616734
340	300.00	-3	780	7.45	37.126811	-113.602364
345	300.00	-19	820	7.45	37.128569	-113.595377
350	300.00	-46	810	7.45	37.129834	-113.588224
355	300.00	-60	730	7.45	37.130597	-113.580959

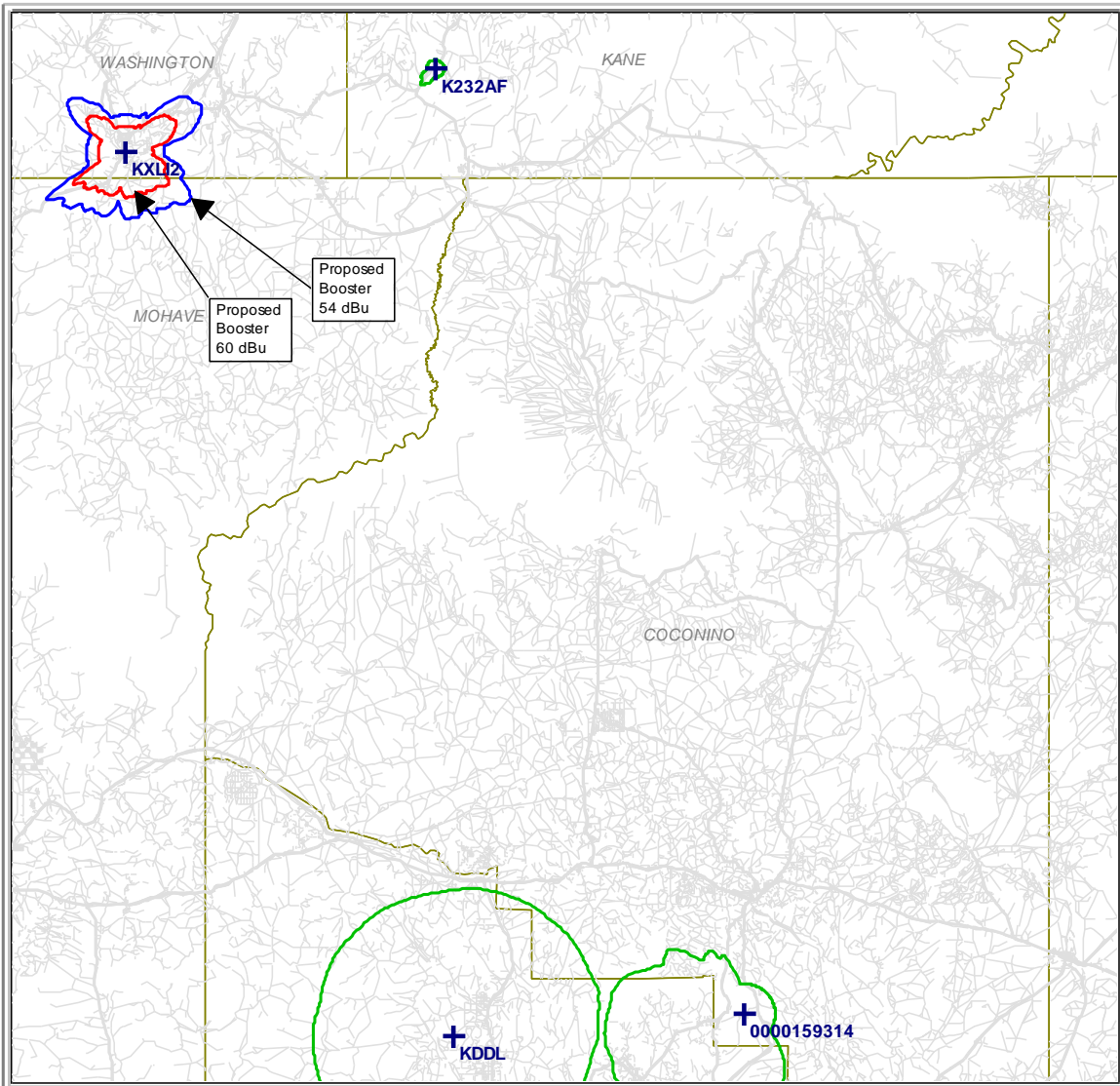
Booster Service Contour - Inside Service Contour



Line of sight from primary station



First Adjacent Channel Protections



Green: 60 dBu contours of first adjacent facilities.