

# Radius Search Results

**Latitude:**

31° 47' 32.8" N+

**Longitude:**

106° 28' 47.6" W+

**Radius:** 100 Miles

**Services:**

FM Allotments, FM Auxiliary, FM Booster, FM Rulemaking, FM Translator, Full Power FM,  
Low Power FM

**Channel From**

275

**Channel To**

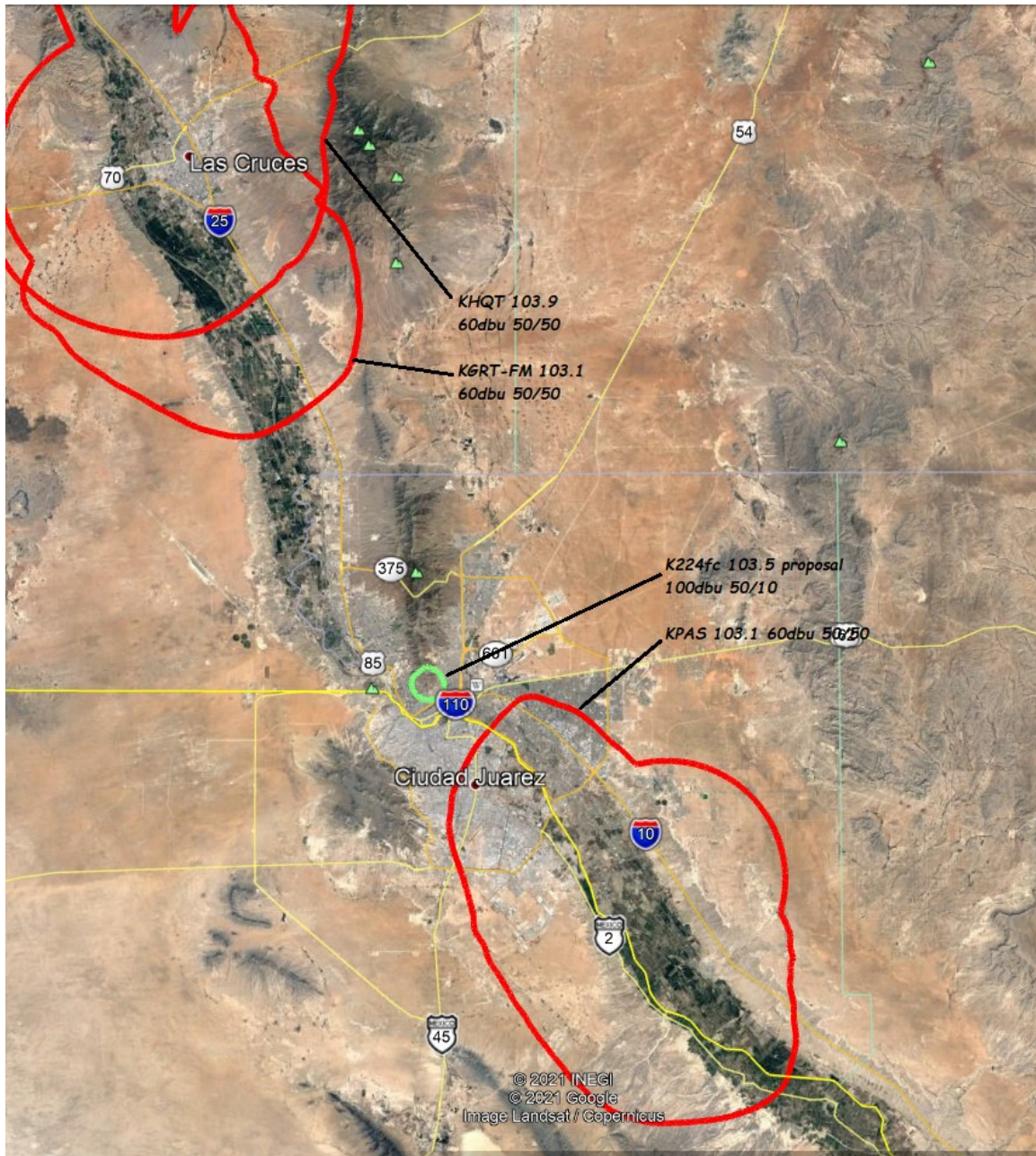
281

**Facility Type**

Active Only

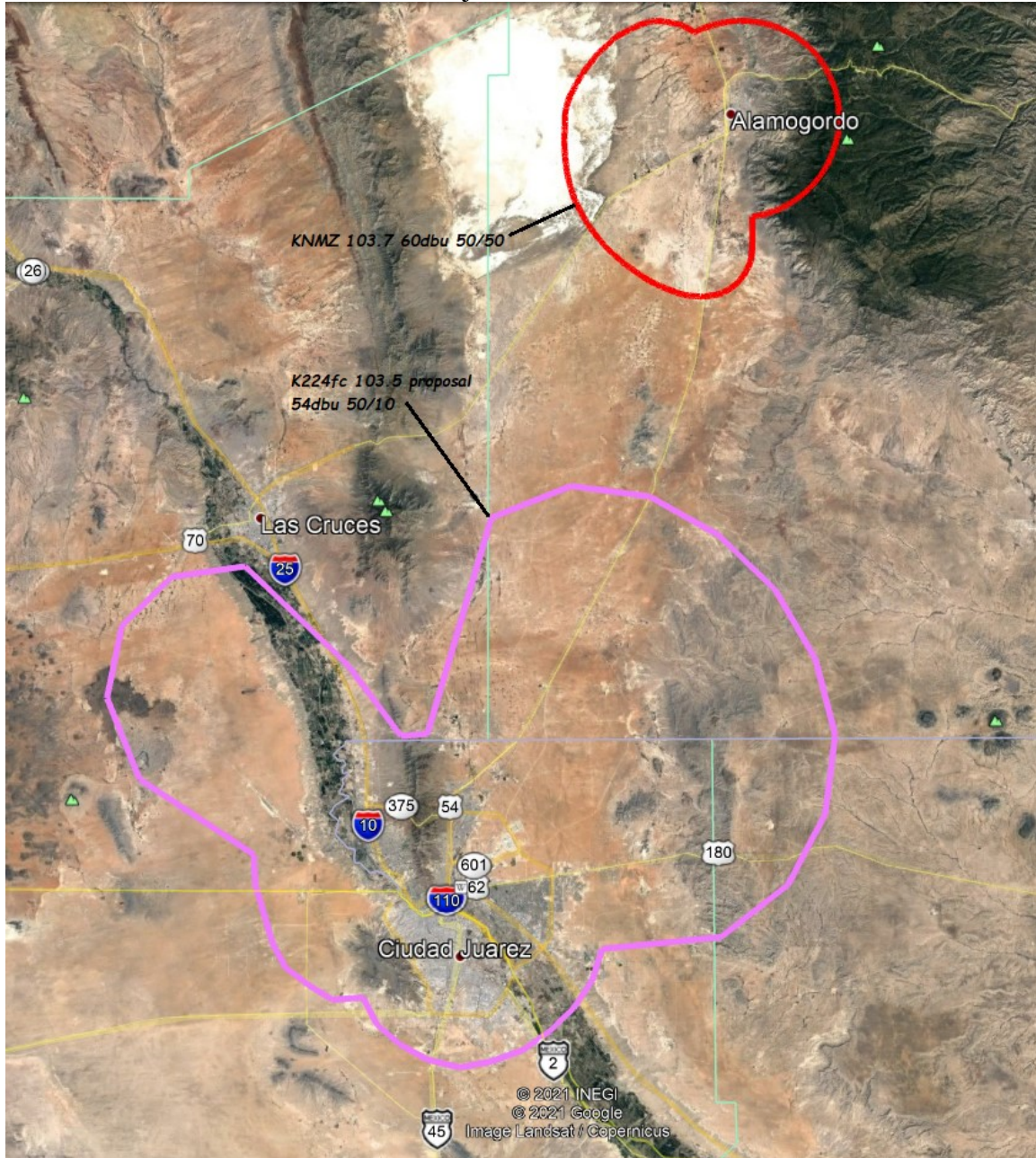
Facility ID	Call Sign	File Number	Channel Purpose	Azimuth	Power	Distance (KM)	Status
976	KPAS	BLH-19840319AC	276 L2C	309.58	3	34.395	Active
63951	KGRT-FM	BMLH-20070423AAA	280 MOD	150.36	6	65.875	Active
14030	KNMZ	BLH-20141209ABC	279 L2C	202.56	6	131.921	Active
33457	KHQT	BLH-19981203KB	276 L2C	158.52	1	72.965	Active

Clearance to 2<sup>nd</sup> adjacent stations KPAS 103.1, KGRT-FM 103.9, and KHQT 103.1





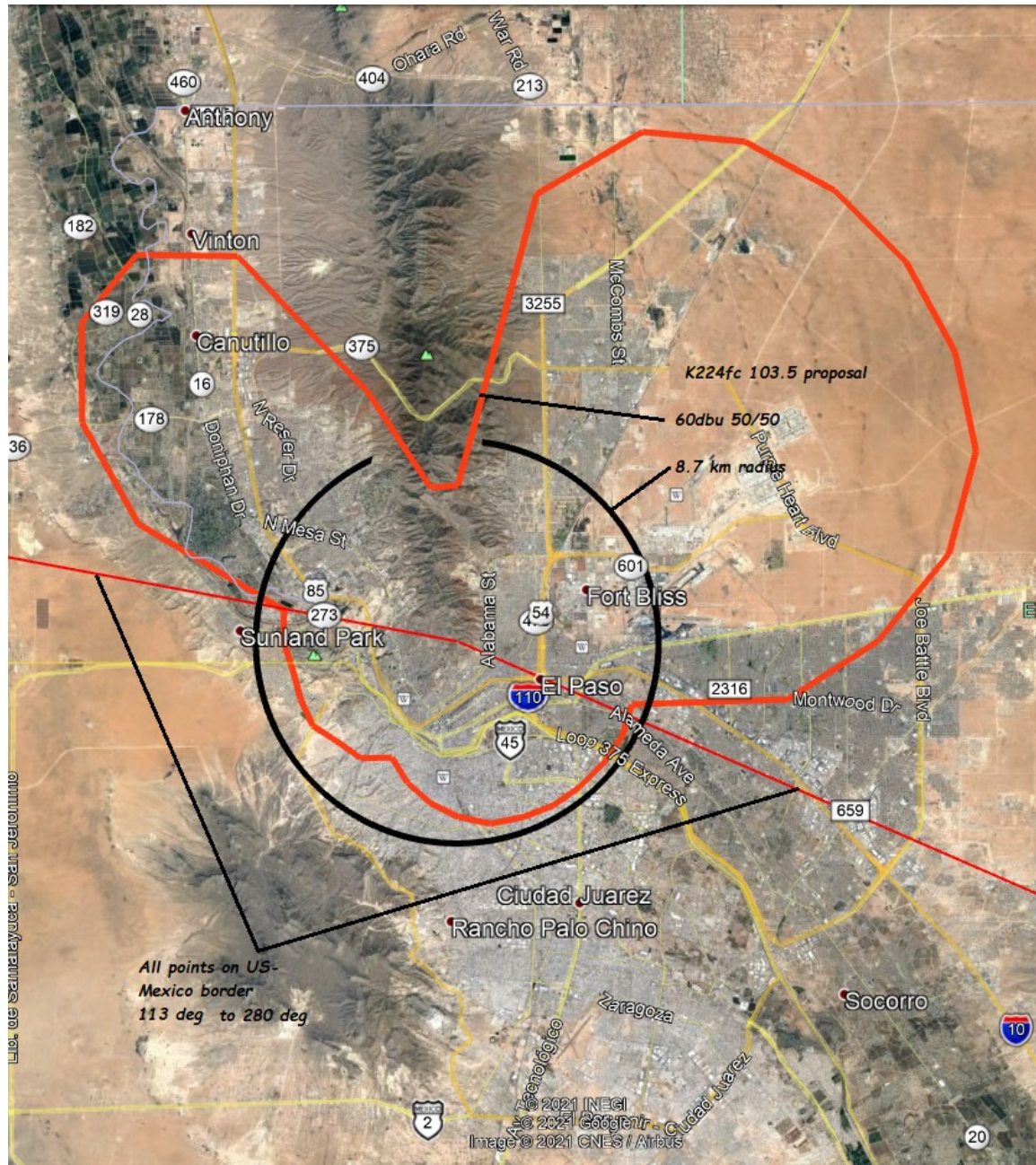
Clearance to 1<sup>st</sup> adjacent stations KNMZ 103.7





The 60dbu 50/50 contour of this proposal extends less than 8.7 km toward any point on the US – Mexico border.

The proposed ERP will be less than 50 watts toward any point on the US – Mexico border.





The 60dbu 50/50 contour of this proposal will be entirely within a 25-mile radius of station KVIV, and so will be a “fill-in” translator.

