

PERDOMO MEDIA GROUP (PMG)

25 Woodman St. Providence, RI. 02907. Tel 401-338-2642

W222AL MINOR MODIFICATION REPORT

License W222AL: 55 watts, 61 meters AMSL

Proposed: 250 watts, 93 meters AMSL

This is a fill-in translator for WJPG-FM, Cape May Court House, New Jersey. The purpose of this application is to increase the antenna height above mean sea level from 61 meters to 93 meters and increase effective radiated power to 250 watts. The map following this narrative demonstrates that the 60 dbu contour of the translator is entirely within the 60 dBu primary service contour of WJPG-FM.

Table 1. An allocation study finds two stations of interest. Co-channel construction permit for W222CX, Atlantic City, New Jersey, is protected here by the use of a directional antenna, as shown by the map following this narrative.

WSMJ This is a second adjacent Class A station on Ch. 220, 91.9 MHZ. Presently the site of W222AL is in an unpopulated area some 2.9 miles (4.68 KM) from the WSMJ tower. Proposed here is a move to another site some 5 ½ miles (8.84 KM) north of the WSMJ tower. This site is just within the 60 dbu contour of WSMJ. This will be further discussed below.

As Table 1 demonstrates, and the maps following this narrative, this new site for W222AL remains far enough away from the other stations of interest so as to not create any interference to their signals. W223CO has a construction permit to operate on Co-Channel 92.3 AKA W222CX.CW

Exhibits: List of exhibits follows this narrative.

Table 1

91.7	Ch. 219A	WRTX	Dover, Delaware	64.61 KM	278°
		W219BZ	Lewes, Delaware	54.26 KM	215°
91.9	Ch. 220A	WSMJ	North Wildwood, N.J.	8.84 KM	197°
92.1	Ch. 221A	WVLT	Vineland, NJ	46.7 KM	333°
92.3	Ch. 222B	WERQ	Baltimore, MD	160.8 KM	279°
		W222CX/CP	Atlantic City, NJ	39.80 KM	42°
92.5	Ch. 223B	WXTU	Philadelphia, PA	107.4 KM	341°
		W223CO	Atlantic City, NJ	39.82 KM	42°
92.7	Ch. 224A	WGMD	Rehoboth Beach, DE	57.04 KM	215°
92.9	Ch. 225	W225BV	Pomona, NJ	46.05 KM	32°

PERDOMO MEDIA GROUP (PMG)

25 Woodman St. Providence, RI. 02907. Tel 401-338-2642

Antenna's Patterns:

Antenna Model PSI FML-4 Special
Effective Radiated Power: 0.25 kW
Antenna Center HAAT: 90 m (295 ft.)
Antenna Center AMSL: 93 m (305 ft.)
Antenna Center HAG: 88 m (289 ft.)
Site Location: 39-07-32.4 N
74-49-24.6 W (NAD 83)
ASR 1038532

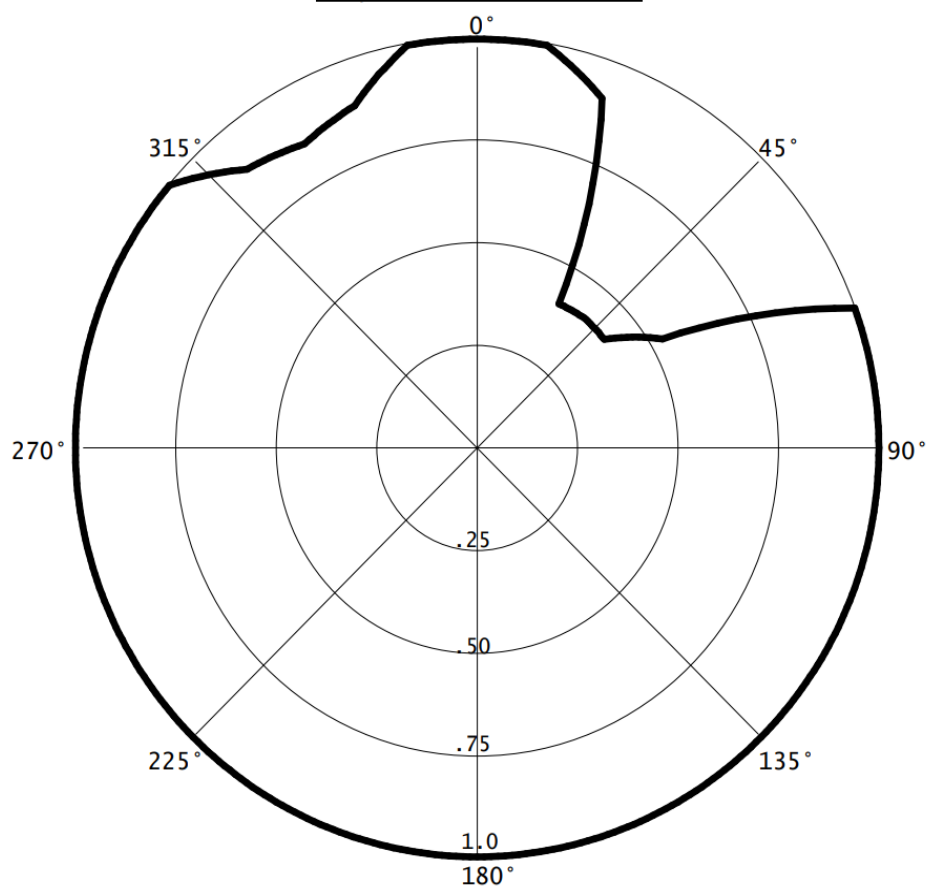
PROPOSED

Azi	Field	dBk	kw
000	1.000	-06.021	0.250
010	1.000	-06.021	0.250
020	0.910	-06.840	0.207
030	0.407	-13.829	0.041
040	0.415	-13.660	0.043
050	0.413	-13.702	0.043
060	0.533	-11.486	0.071
070	1.000	-06.021	0.250
080	1.000	-06.021	0.250
090	1.000	-06.021	0.250
100	1.000	-06.021	0.250
110	1.000	-06.021	0.250
120	1.000	-06.021	0.250
130	1.000	-06.021	0.250
140	1.000	-06.021	0.250
150	1.000	-06.021	0.250
160	1.000	-06.021	0.250
170	1.000	-06.021	0.250
180	1.000	-06.021	0.250
190	1.000	-06.021	0.250
200	1.000	-06.021	0.250
210	1.000	-06.021	0.250
220	1.000	-06.021	0.250
230	1.000	-06.021	0.250
240	1.000	-06.021	0.250
250	1.000	-06.021	0.250
260	1.000	-06.021	0.250
270	1.000	-06.021	0.250
280	1.000	-06.021	0.250
290	1.000	-06.021	0.250
300	1.000	-06.021	0.250
310	1.000	-06.021	0.250
320	0.890	-07.033	0.198
330	0.859	-07.341	0.184
340	0.891	-07.023	0.198
350	1.000	-06.021	0.250

05-25-2021

RMS(V)= .941

Graph is Relative Field



PERDOMO MEDIA GROUP (PMG)

25 Woodman St. Providence, RI. 02907. Tel 401-338-2642

Allocations											
Perdomo Media Group											
REFERENCE		CH# 222D - 92.3 MHZ, Pwr= 0.25 kw DA, HAAT= 90.0 M, COR= 93 M								DISPLAY DATES	
39 07 32.40 N.		Average Protected F(50-50)= 12.23 km								DATA 05-23-21	
74 49 24.60 W.		Standard Directional								SEARCH 05-25-21	
CH	CALL	TYPE	ANT	AZI	DIST	LAT	PWR(kw)	INT(km)	PRO(km)	*IN*	*OUT*
CITY		STATE		<--	FILE #	LNG	HAAT(M)	COR(M)	LICENSEE	(Overlap in km)	
222D	W222CX/w2	CP _CN		42.3	39.77	39 23 24.00	0.250	44.5	12.9	-15.1*	0.0
Atlantic City		NJ		222.5	0000143285	74 30 44.00	58	102	Longport Media, LLC		
221A	WVLT	LIC NCN		332.5	46.72	39 29 53.40	6.000	46.3	29.9	-10.9	0.0
Vineland		NJ		152.3	BLH20021028AAY	75 04 29.60	100	127	Clear Communications, Inc.		
220A	WSMJ	LIC ZVN		197.1	8.84	39 02 58.00	0.750	0.9	10.1	-4.2*	-2.3*
North Wildwood		NJ		17.0	BLE20130204AAR	74 51 13.00		75	Domestic Church Media Foun		
222B	WERQ-FM	LIC DCN		279.1	160.45	39 20 18.40	37.000	141.2	70.4	6.9	31.0
Baltimore		MD		97.9	BLH20130830ACP	76 39 58.90	173	269	Radio One Licenses, LLC		
223B	WXTU	LIC DCN		340.9	107.51	40 02 19.40	15.000	80.6	68.4	14.9	14.1
Philadelphia		PA		160.6	BLH20031017ACG	75 14 12.60	279	343	Beasley Media Group Licens		
223D	W223CO	LIC DVN		42.3	39.78	39 23 24.40	0.050	1.6	1.0	27.6	25.6
Atlantic City		NJ		222.5	BLFT20150313AAN	74 30 43.50	58	62	Longport Media, LLC		
221A	WLBW	LIC _CN		199.4	82.85	38 25 20.40	3.000	43.1	28.4	27.4	36.5
Fenwick Island		DE		19.2	BMLED20110201ADZ	75 08 21.70	143	147	Educational Media Foundati		
224A	WGMD	LIC NCN		214.9	57.06	38 42 14.80	2.600	2.4	26.5	42.3	29.4
Rehoboth Beach		DE		34.7	BLH20070802ABF	75 11 59.30	132	136	Resort Broadcasting Compan		
219A	WLFR	LIC _CN		32.1	46.05	39 28 34.70	0.820	1.6	12.0	32.9	33.5
Pomona		NJ		212.3	BLE20091223AFC	74 32 18.90	45	57	Stockton University		
225D	W225BV	LIC _CN		32.1	46.04	39 28 34.40	0.080	0.6	6.4	33.9	39.1
Pomona		NJ		212.3	BLFT20150814ACF	74 32 18.60	47	54	wyrs Broadcasting		
225A	WRDX	LIC NCN		277.7	64.45	39 12 03.40	1.700	2.0	23.4	50.0	40.0
Smyrna		DE		97.2	BLH19931203KC	75 33 53.70	115	123	Ihm Licenses, LLC		
219D	W219BZ	LIC _CN		215.0	54.28	38 43 30.40	0.170	0.9	7.1	41.0	46.1
Lewes		DE		34.8	BLFT19990517UB	75 10 56.70	34	38	Bible Broadcasting Network		
219A	WRTX	LIC _VN		277.7	64.45	39 12 03.40	0.580	1.6	16.4	50.4	47.0
Dover		DE		97.2	BLE19950418KB	75 33 53.70		104	Temple University of The c		

Terrain database is FCC NGDC 30 Sec , R= 73.215 qualifying spacings or FCC minimum Spacings in KM, M= Margin in KM
In & Out distances between contours are shown at closest points. Reference zone= East Zone, Co to 3rd adjacent.
All separation margins (if shown) include rounding.

Ant Column: (D= DA Standard, Z= DA 73.215, N= Not DA 73.215, _= Omni), Polarization (C,H,V,E), Beamtilt(Y,N,X)
""affixed to 'IN' or 'OUT' values = site inside restricted contour.

PERDOMO MEDIA GROUP (PMG)

25 Woodman St. Providence, RI. 02907. Tel 401-338-2642

OVERLAP REQ.

PROPOSED 60 dBu

Overlaps License W222AL 60 dBu

Coverage Study - FCC NGDC 30 Sec
06-05-2021



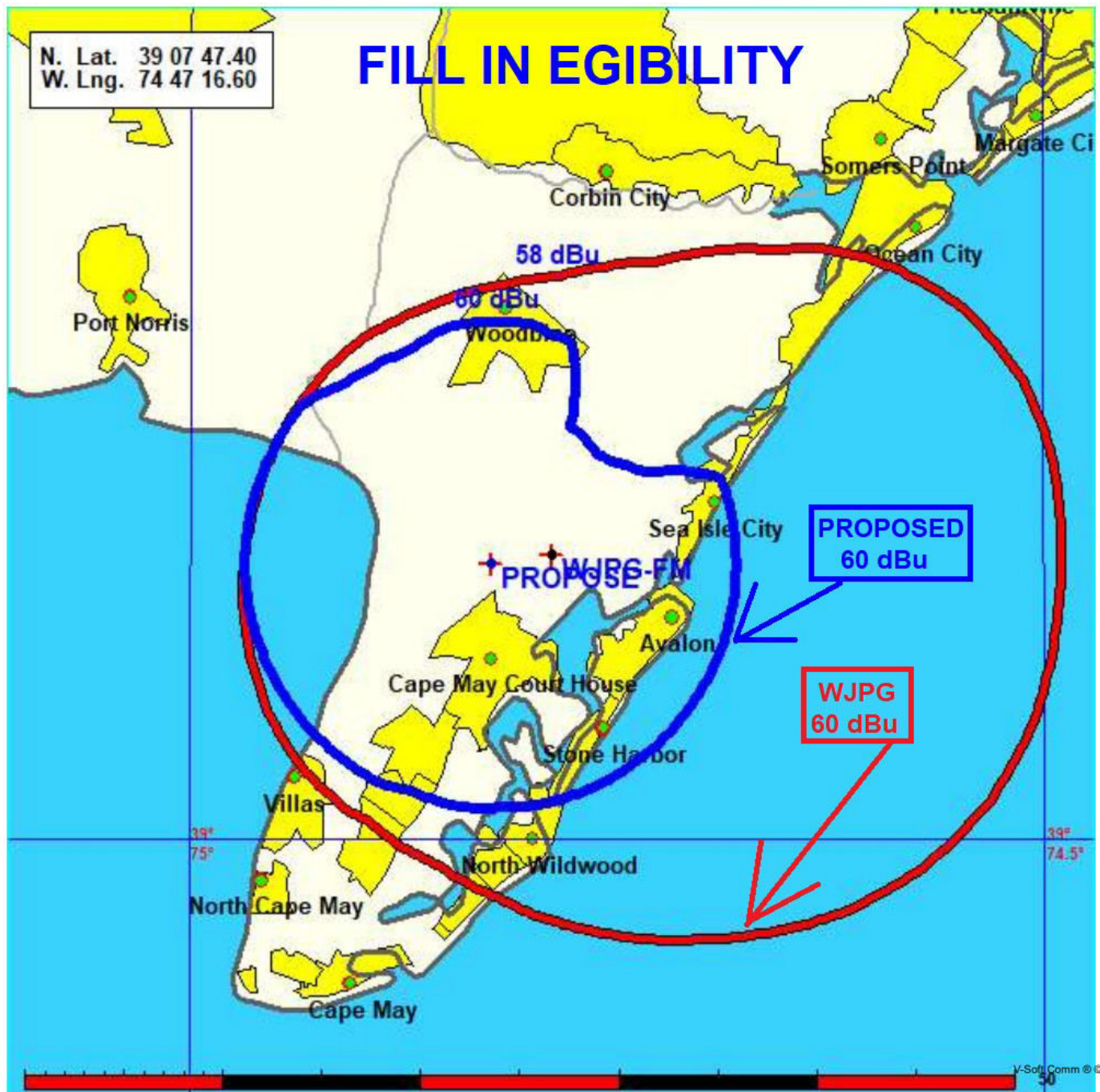
PERDOMO MEDIA GROUP (PMG)

25 Woodman St. Providence, RI. 02907. Tel 401-338-2642

FILL IN & PRIMARY STATION

WJPG -FM PRIMARY STATION
W222AL FILL IN TRANSLATOR

Coverage Study - FCC NGDC 30 Sec
07-05-2021



PERDOMO MEDIA GROUP (PMG)

25 Woodman St. Providence, RI. 02907. Tel 401-338-2642

W223CO WAS MODIFIED TO CO-CHA. 222
Perdomo Media Group

FMCommander Single Allocation Study - 06-18-2021 - FCC NGDC 30 Sec
PROPOSED s Overlaps (In= -15.14 km, Out= 0.02 km)

PROPOSED CH 222 D DA
Lat= 39 07 32.40, Lng= 74 49 24.60
0.25 kW 90 m HAAT, 93 m COR
Prot.= 60 dBu, Intef.= 40 dBu

W222CX/W2 CH 222 D 0000143285
Lat= 39 23 24.00, Lng= 74 30 44.00
0.25 kW 57.8 m HAAT, 101.5 m COR
Prot.= 60 dBu, Intef.= 40 dBu



PERDOMO MEDIA GROUP (PMG)

25 Woodman St. Providence, RI. 02907. Tel 401-338-2642

CO-WERQ
Perdomo Media Group

FMCommander Single Allocation Study - 06-05-2021 - FCC NGDC 30 Sec
PROPOSED's Overlaps (In= 6.9 km, Out= 30.96 km)

PROPOSED CH 222 D DA
Lat= 39 07 32.40, Lng= 74 49 24.60
0.25 kW 90 m HAAT, 93 m COR
Prot.= 60 dBu, Intef.= 34 dBu

WERQ-FM CH 222 B DA BLH20130830ACP
Lat= 39 20 18.40, Lng= 76 39 58.90
37.0 kW 173 m HAAT, 269 m COR
Prot.= 54 dBu, Intef.= 40 dBu



PERDOMO MEDIA GROUP (PMG)

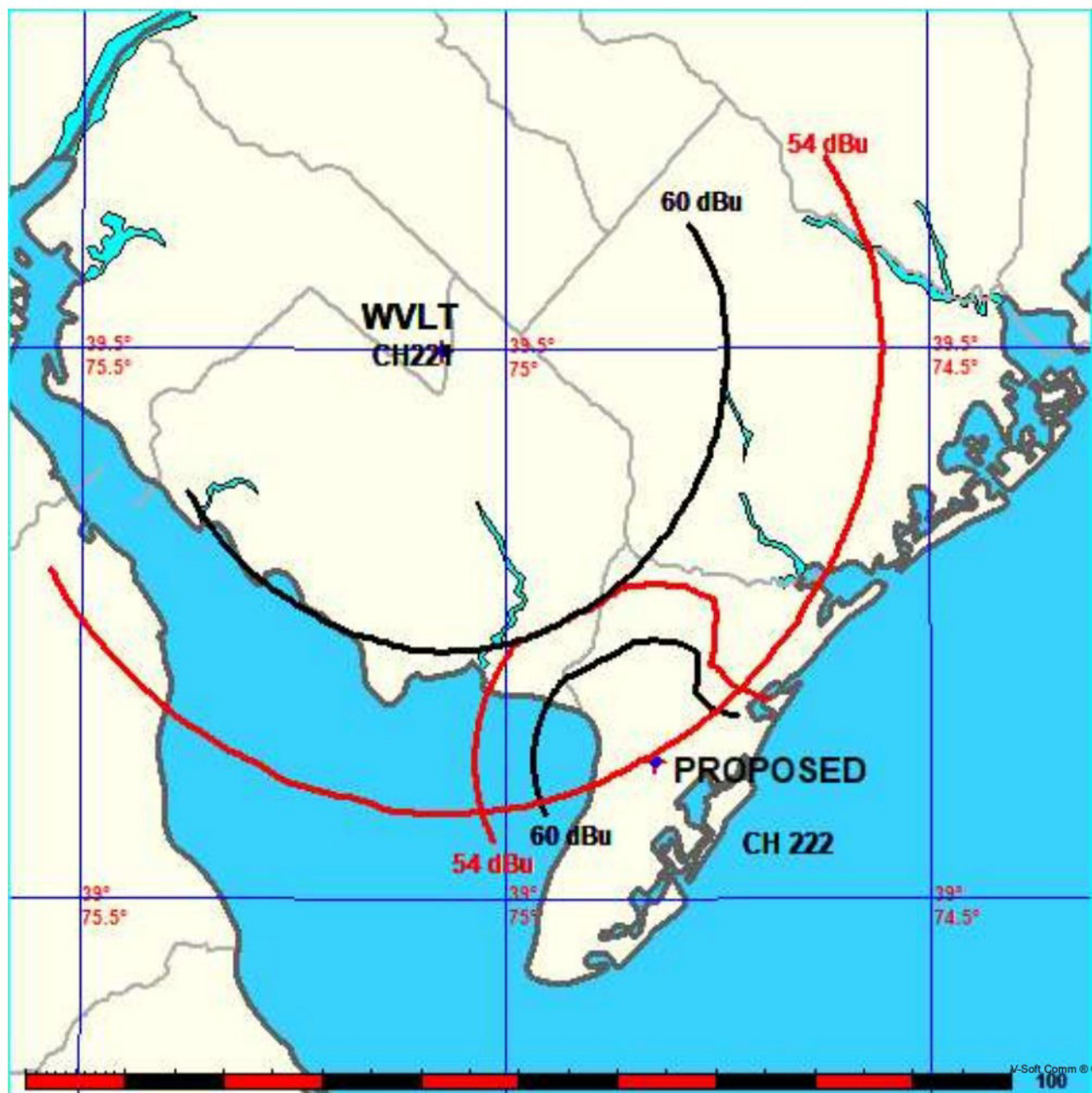
25 Woodman St. Providence, RI. 02907. Tel 401-338-2642

1st. WVLT
Perdomo Media Group

FMCommander Single Allocation Study - 06-05-2021 - FCC NGDC 30 Sec
PROPOSED Overlaps (In= -10.95 km, Out= 0.0 km)

PROPOSED CH 222 D DA
Lat= 39 07 32.40, Lng= 74 49 24.60
0.25 kW 90 m HAAT, 93 m COR
Prot.= 60 dBu, Intef.= 54 dBu

WVLT CH 221 A 73.215 N BLH20021028AAY
Lat= 39 29 53.40, Lng= 75 04 29.60
6.0 kW 100 m HAAT, 127 m COR
Prot.= 60 dBu, Intef.= 54 dBu



PERDOMO MEDIA GROUP (PMG)

25 Woodman St. Providence, RI. 02907. Tel 401-338-2642

1st. W223CO
Perdomo Media Group

FMCommander Single Allocation Study - 06-05-2021 - FCC NGDC 30 Sec
PROPOSED 's Overlaps (In= 27.56 km, Out= 25.57 km)

PROPOSED CH 222 D DA
Lat= 39 07 32.40, Lng= 74 49 24.60
0.25 kW 90 m HAAT, 93 m COR
Prot.= 60 dBu, Intef.= 54 dBu

W223CO CH 223 D DA BLFT20150313AAN
Lat= 39 23 24.40, Lng= 74 30 43.50
0.05 kW 57.8 m HAAT, 62 m COR
Prot.= 60 dBu, Intef.= 54 dBu



PERDOMO MEDIA GROUP (PMG)

25 Woodman St. Providence, RI. 02907. Tel 401-338-2642

1ST. WXTU
Perdomo Media Group

FMCommander Single Allocation Study - 06-06-2021 - FCC NGDC 30 Sec
PROPOSED s Overlaps (In= 14.94 km, Out= 14.1 km)

PROPOSED CH 222 D DA
Lat= 39 07 32.40, Lng= 74 49 24.60
0.25 kW 90 m HAAT, 93 m COR
Prot.= 60 dBu, Intef.= 48 dBu

WXTU CH 223 B DA BLH20031017ACG
Lat= 40 02 19.40, Lng= 75 14 12.60
15.0 kW 279 m HAAT, 343 m COR
Prot.= 54 dBu, Intef.= 54 dBu



PERDOMO MEDIA GROUP (PMG)

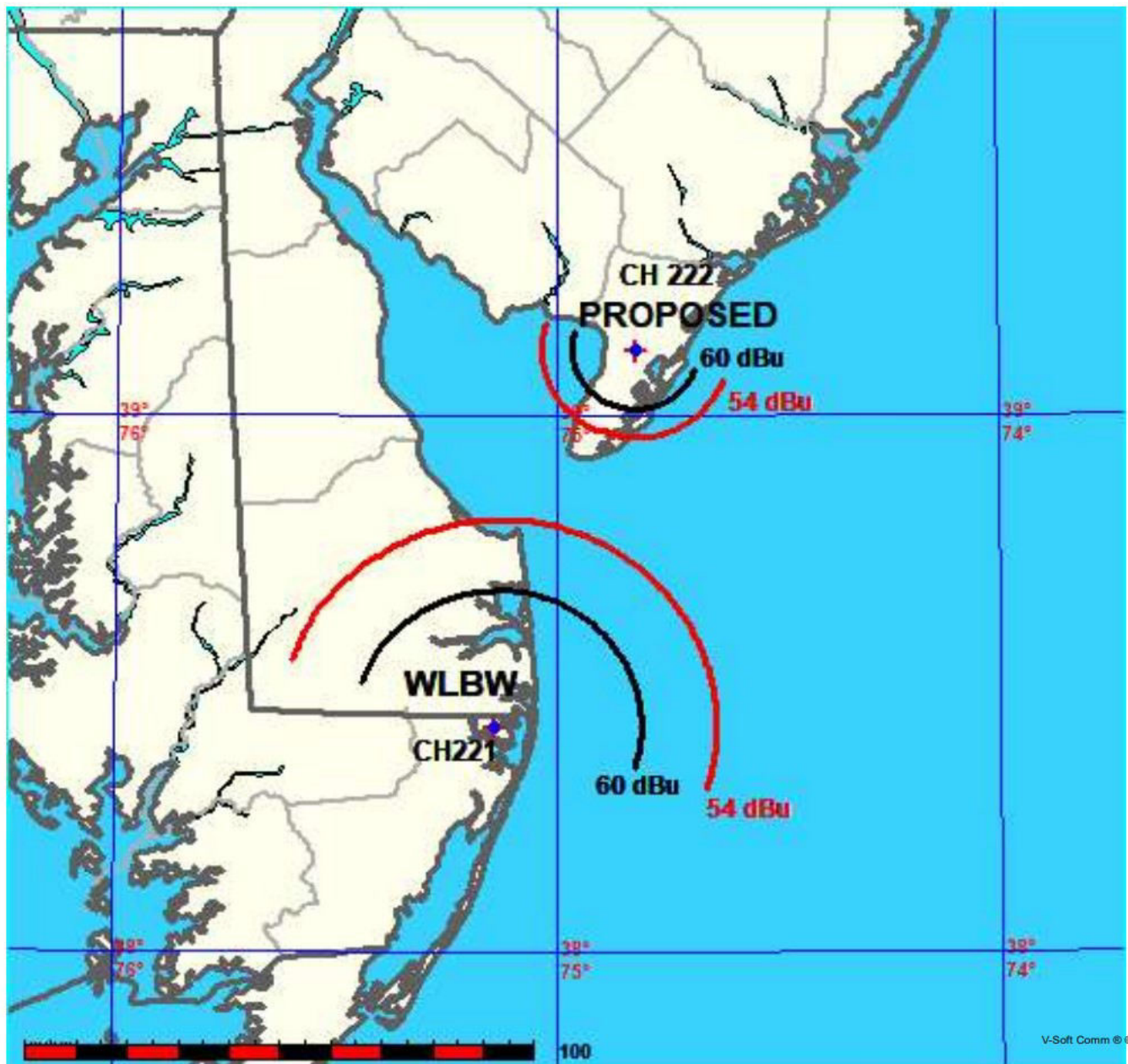
25 Woodman St. Providence, RI. 02907. Tel 401-338-2642

1ST. WLBW
Perdomo Media Group

FMCommander Single Allocation Study - 06-06-2021 - FCC NGDC 30 Sec
PROPOSED's Overlaps (In= 27.43 km, Out= 36.5 km)

PROPOSED CH 222 D DA
Lat= 39 07 32.40, Lng= 74 49 24.60
0.25 kW 90 m HAAT, 93 m COR
Prot.= 60 dBu, Intef.= 54 dBu

WLBW CH 221 A BMLED20110201ADZ
Lat= 38 25 20.40, Lng= 75 08 21.70
3.0 kW 143 m HAAT, 147 m COR
Prot.= 60 dBu, Intef.= 54 dBu



PERDOMO MEDIA GROUP (PMG)

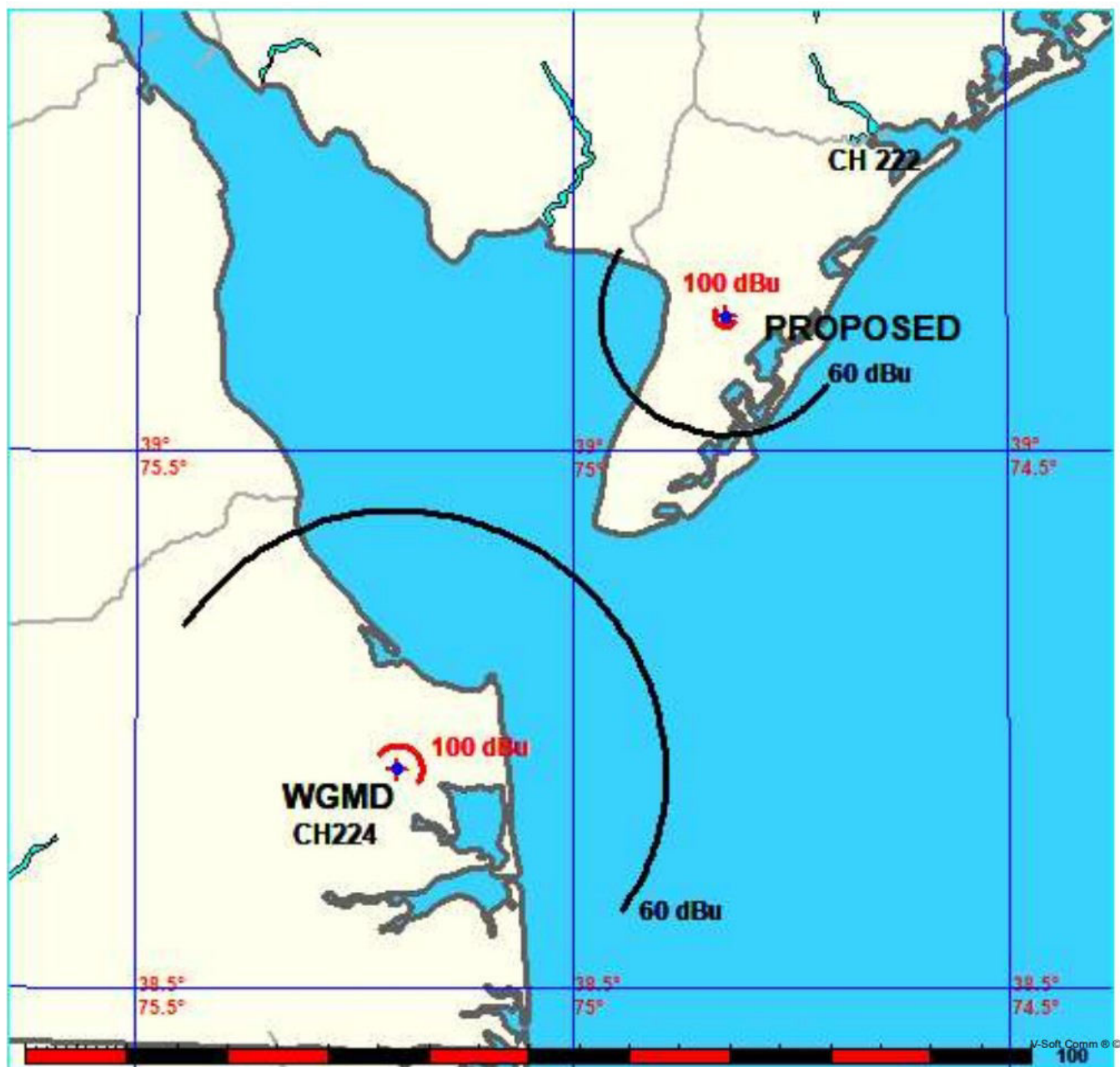
25 Woodman St. Providence, RI. 02907. Tel 401-338-2642

2ND. WGMD
Perdomo Media Group

FMCommander Single Allocation Study - 06-06-2021 - FCC NGDC 30 Sec
PROPOSED 's Overlaps (In= 42.26 km, Out= 29.42 km)

PROPOSED CH 222 D DA
Lat= 39 07 32.40, Lng= 74 49 24.60
0.25 kW 90 m HAAT, 93 m COR
Prot.= 60 dBu, Intef.= 100 dBu

WGMD CH 224 A 73.215 N BLH20070802ABF
Lat= 38 42 14.80, Lng= 75 11 59.30
2.6 kW 132 m HAAT, 135.6 m COR
Prot.= 60 dBu, Intef.= 100 dBu



PERDOMO MEDIA GROUP (PMG)

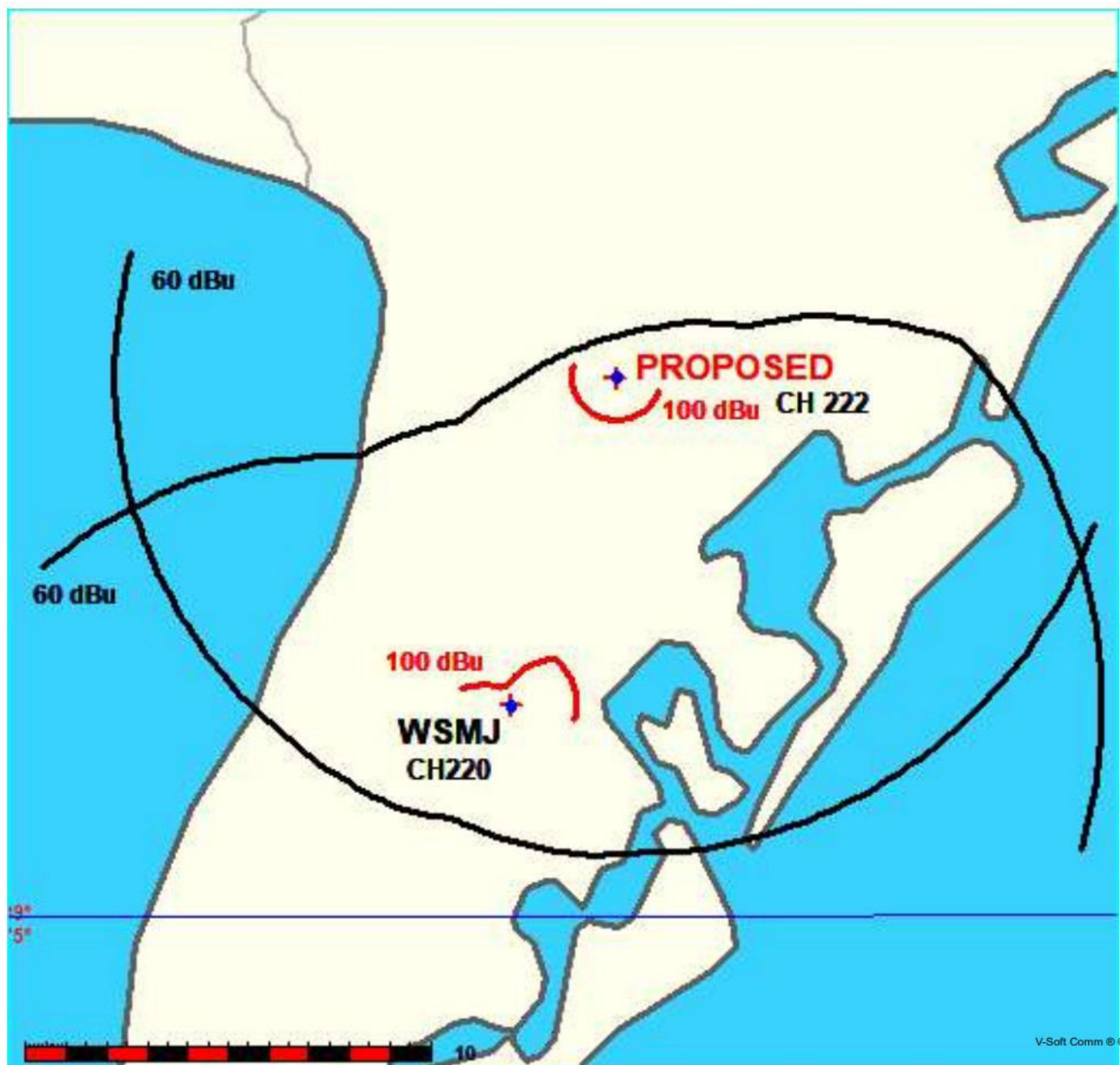
25 Woodman St. Providence, RI. 02907. Tel 401-338-2642

2ND. WSMJ
Perdomo Media Group

FMCommander Single Allocation Study - 06-06-2021 - FCC NGDC 30 Sec
PROPOSED's Overlaps (In= -4.24 km, Out= -2.34 km)

PROPOSED CH 222 D DA
Lat= 39 07 32.40, Lng= 74 49 24.60
0.25 kW 90 m HAAT, 93 m COR
Prot.= 60 dBu, Intef.= 100 dBu

WSMJ CH 220 A 73.215 Z BLED20130204AAR
Lat= 39 02 58.00, Lng= 74 51 13.00
0.75 kW 0 m HAAT, 74.7 m COR
Prot.= 60 dBu, Intef.= 100 dBu



PERDOMO MEDIA GROUP (PMG)

25 Woodman St. Providence, RI. 02907. Tel 401-338-2642

3RD. W219BZ
Perdomo Media Group

FMCommander Single Allocation Study - 06-06-2021 - FCC NGDC 30 Sec
PROPOSED Overlaps (In= 40.95 km, Out= 46.06 km)

PROPOSED CH 222 D DA
Lat= 39 07 32.40, Lng= 74 49 24.60
0.25 kW 90 m HAAT, 93 m COR
Prot.= 60 dBu, Intef.= 100 dBu

W219BZ CH 219 D BLFT19990517UB
Lat= 38 43 30.40, Lng= 75 10 56.70
0.17 kW 34 m HAAT, 38 m COR
Prot.= 60 dBu, Intef.= 100 dBu



PERDOMO MEDIA GROUP (PMG)

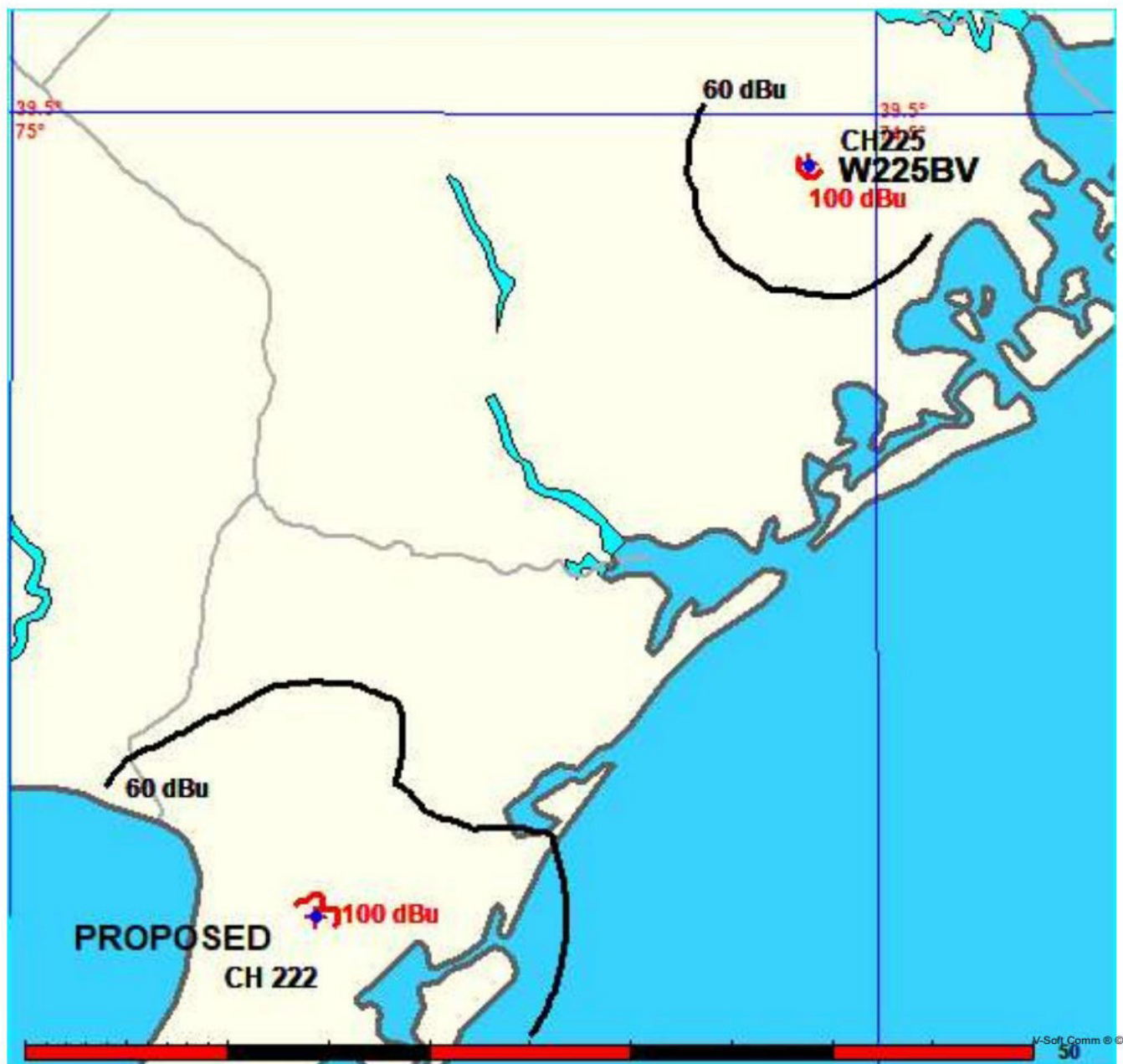
25 Woodman St. Providence, RI. 02907. Tel 401-338-2642

3RD. W225BV
Perdomo Media Group

FMCommander Single Allocation Study - 06-06-2021 - FCC NGDC 30 Sec
PROPOSED Overlaps (In= 33.92 km, Out= 39.13 km)

PROPOSED CH 222 D DA
Lat= 39 07 32.40, Lng= 74 49 24.60
0.25 kW 90 m HAAT, 93 m COR
Prot.= 60 dBu, Intef.= 100 dBu

W225BV CH 225 D BLFT20150814ACF
Lat= 39 28 34.40, Lng= 74 32 18.60
0.08 kW 47 m HAAT, 54 m COR
Prot.= 60 dBu, Intef.= 100 dBu



PERDOMO MEDIA GROUP (PMG)

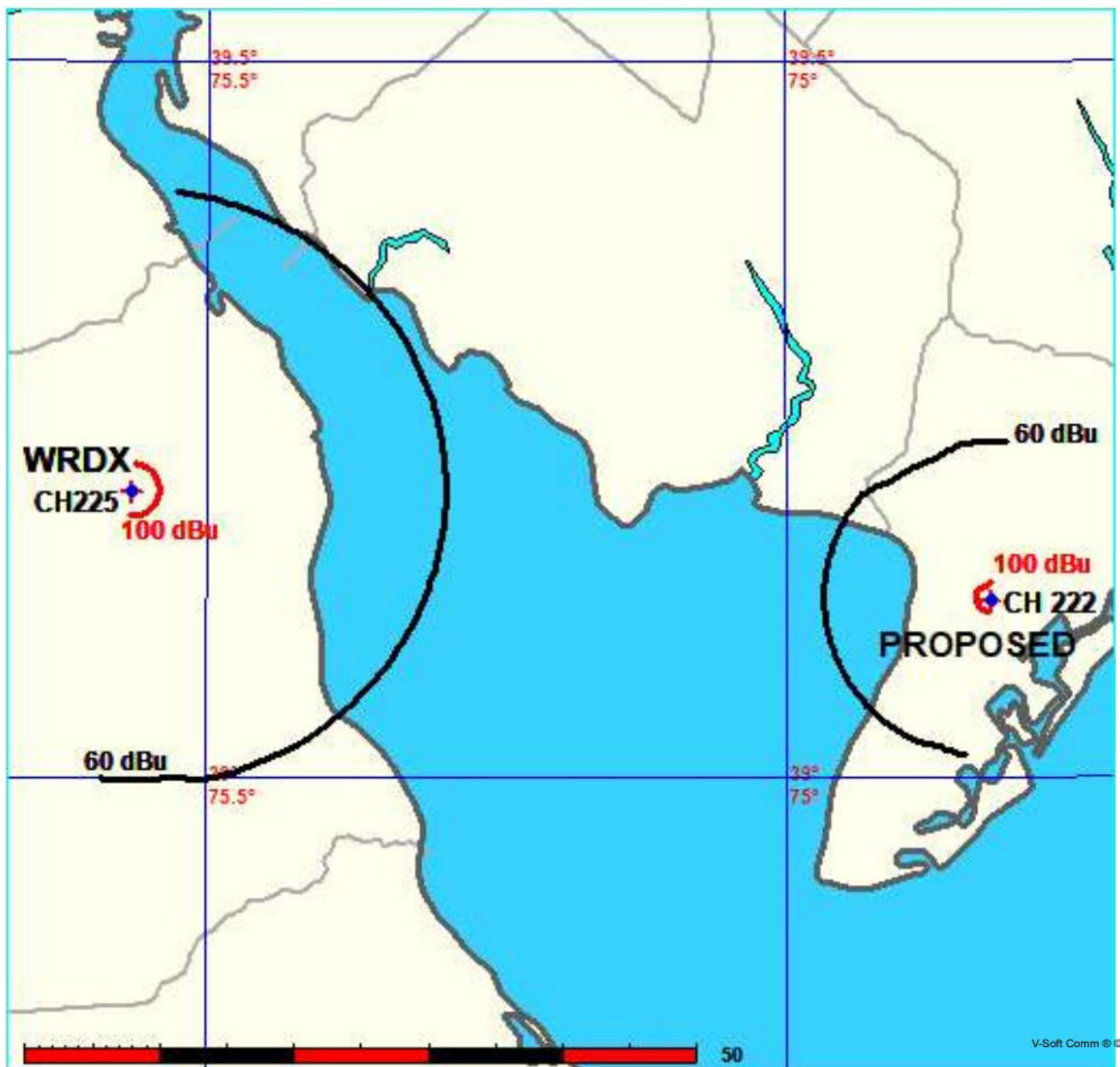
25 Woodman St. Providence, RI. 02907. Tel 401-338-2642

3RD. WRDX
Perdomo Media Group

FMCommander Single Allocation Study - 06-06-2021 - FCC NGDC 30 Sec
PROPOSED's Overlaps (In= 50.0 km, Out= 39.98 km)

PROPOSEDCH 222 D DA
Lat= 39 07 32.40, Lng= 74 49 24.60
0.25 kW 90 m HAAT, 93 m COR
Prot.= 60 dBu, Intef.= 100 dBu

WRDX CH 225 A 73.215 N BLH19931203KC
Lat= 39 12 03.40, Lng= 75 33 53.70
1.7 kW 115 m HAAT, 123 m COR
Prot.= 60 dBu, Intef.= 100 dBu



PERDOMO MEDIA GROUP (PMG)

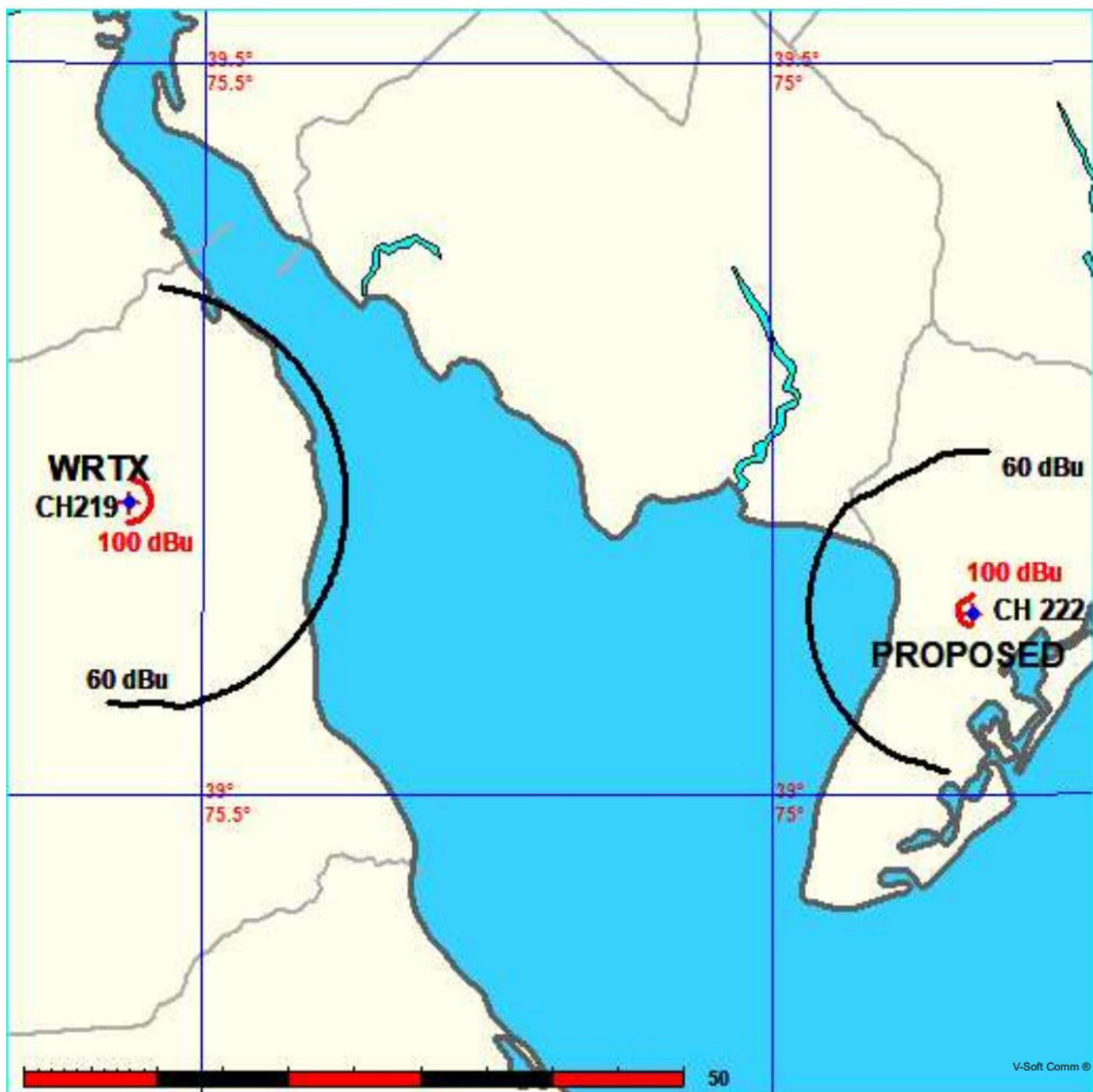
25 Woodman St. Providence, RI. 02907. Tel 401-338-2642

3RD. WRTX
Perdomo Media Group

FMCommander Single Allocation Study - 06-06-2021 - FCC NGDC 30 Sec
PROPOSED Overlaps (In= 50.43 km, Out= 46.96 km)

PROPOSED CH 222 D DA
Lat= 39 07 32.40, Lng= 74 49 24.60
0.25 kW 90 m HAAT, 93 m COR
Prot.= 60 dBu, Intef.= 100 dBu

WRTX CH 219 A BLED19950418KB
Lat= 39 12 03.40, Lng= 75 33 53.70
0.58 kW 0 m HAAT, 104 m COR
Prot.= 60 dBu, Intef.= 100 dBu



PERDOMO MEDIA GROUP (PMG)

25 Woodman St. Providence, RI. 02907. Tel 401-338-2642

WAVIER REQUEST

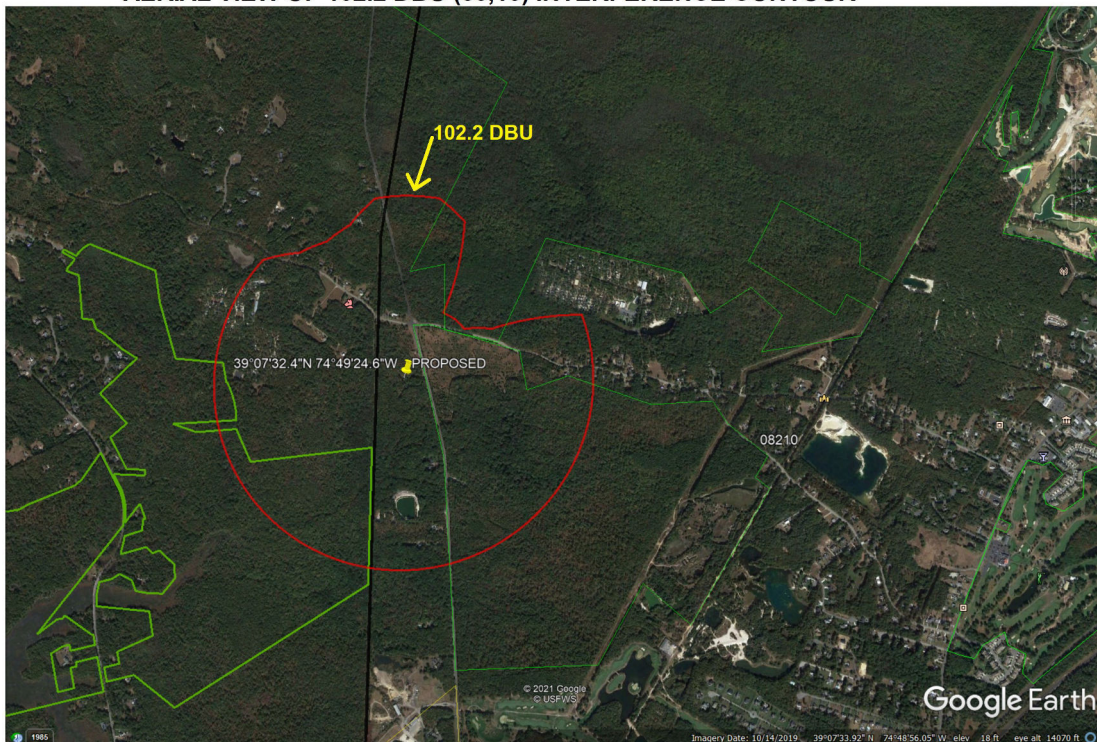
WSMJ

This directional station operates on Ch. 220A, 91.9 at North Wildwood, New Jersey. With an effective radiated power of 750 watts, 74.7 meters above mean sea level. At the proposed new site for W222AL, WSMJ places a 62.2 DBU contour over the site. This will overlap the 100 dbu contour from the proposed W222AL antenna. Under Section 74.1204 (d), this interference restriction may be waived if the area where interference occurs is entirely over an unoccupied area. The interfering contour of the translator must be 40 dbu higher than the protected contour of the protected station, or 102.2 DBU. With an antenna at 93 meters AG, and 250 watts ERP, this 50/10 interference contour extends 860 meters from the antenna in the horizontal plane.

Now look at the graph next page showing the distances to this 102.2 DBU interfering contour at various downward vertical angles from the antenna. From Google Earth it appears that the nearest occupied structure is a house about 300 meters to the north of the site, or 313 meters from the antenna. This is a downward angle of 73 degrees, at this angle the interfering contour only extends between 15 and 22 meters from the antenna. That is, interference occurs at a point some 72 meters above ground.

Therefore we can conclude that the 102.2 DBU interference contour is entirely within a small area in the immediate vicinity of the tower. Based on this a waiver of Section 74.1204 is requested in accordance with Living Way Ministries, Inc. (FCC 08-242).

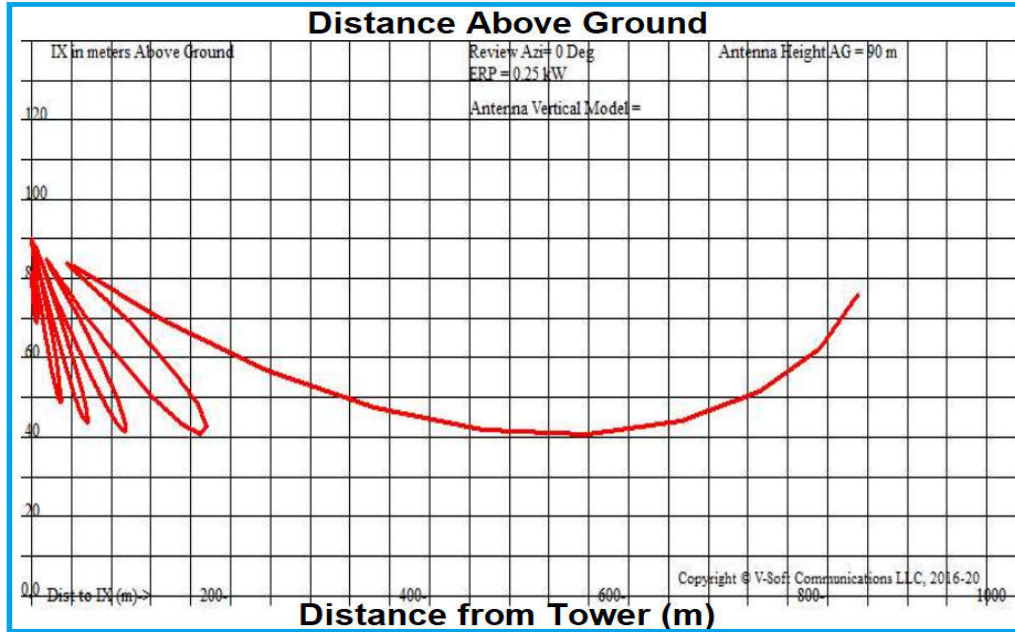
AERIAL VIEW OF 102.2 DBU (50,10) INTERFERENCE CONTOUR



PERDOMO MEDIA GROUP (PMG)

25 Woodman St. Providence, RI. 02907. Tel 401-338-2642

PROTECTION TO SECOND ADJACENT CHANNEL 220 WSMJ 91.9 mHz



Graph of elevation of 102.2 dbuV contour above ground with distance

PROPOSED CAPE MAY, NJ, Showing Protection to WSMJ, Channel: 220

Geographic Coordinates: N. 39 07 32.40 W. 74 49 24.60

74.1204(d) Showing - Using FCC 30 SEC Terrain Database

Translator or LPFM Maximum Licensed ERP = 0.25 kW, Channel: 222

Translator or LPFM Antenna Height AG = 90 meters

PROPOSED Antenna Model = PSIFML-4 Special

Protected Station's Contour = 62.20581 dBu

Translator's or LPFM's full Interference contour 102.20581

Review Azimuth = 0 Degrees True

Horizontal Relative Field at Review Azimuth = 1.000

Translator/LPFM ERP on the horizontal at Review Azimuth = 0.25 kW

Distance between stations = 8.9 km

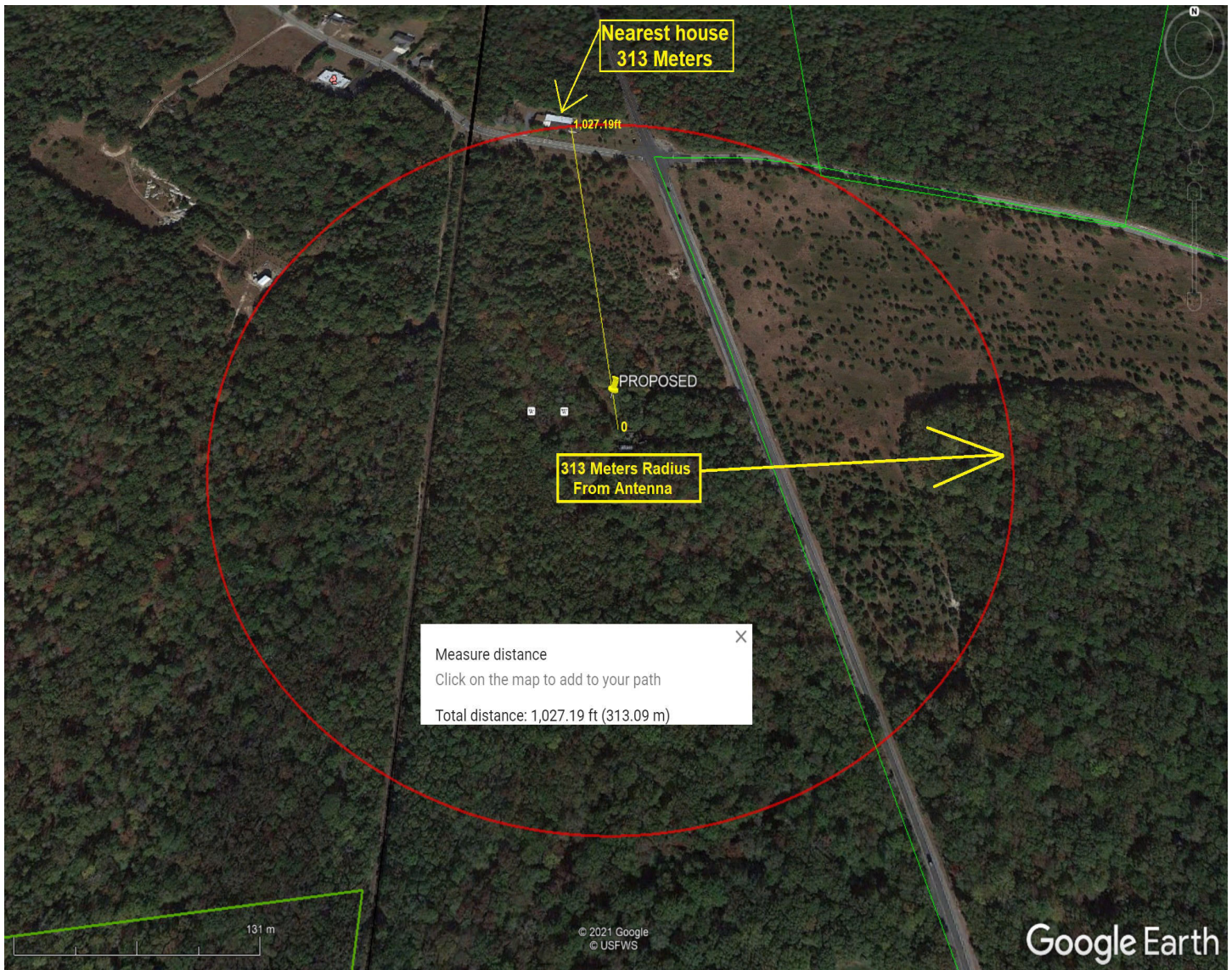
Protected Station= WSMJ, 0.75 kW, 74.7 meters COR AMSL

Depression Angle From Degree(Deg)	Vertical Relative Field	Horizontal Relative Field	ERP (kw)	Dist to IX Contour Along Dep. Angle(m)	Dist to IX Contour From Tower Base(m)	Height IX Above Ground (m)
00.00	1.0	1.0	0.2500	860.3586	860.3586	090.000
05.00	0.665	1.0	0.1106	572.1385	569.9613	040.135
10.00	0.051	1.0	0.0007	043.8783	043.2117	082.381
15.00	0.216	1.0	0.0117	185.8375	179.5052	041.902
20.00	0.065	1.0	0.0011	055.9233	052.5507	070.873
25.00	0.114	1.0	0.0032	098.0809	088.8915	048.549
30.00	0.083	1.0	0.0017	071.4098	061.8427	054.295
35.00	0.042	1.0	0.0004	036.1351	029.6001	069.274
40.00	0.085	1.0	0.0018	073.1305	056.0212	042.993
45.00	0.029	1.0	0.0002	024.9504	017.6426	072.357
50.00	0.039	1.0	0.0004	033.5540	021.5681	064.296
55.00	0.059	1.0	0.0009	050.7612	029.1154	048.419
60.00	0.038	1.0	0.0004	032.6936	016.3468	061.686
65.00	0.005	1.0	0.0000	004.3018	001.8180	086.101
70.00	0.017	1.0	0.0001	014.6261	005.0024	076.256
75.00	0.025	1.0	0.0002	021.5090	005.5669	069.224
80.00	0.024	1.0	0.0001	020.6486	003.5856	069.665
85.00	0.018	1.0	0.0001	015.4865	001.3497	074.572
90.00	0.011	1.0	0.0000	009.4639	000.0000	080.536

PERDOMO MEDIA GROUP (PMG)

25 Woodman St. Providence, RI. 02907. Tel 401-338-2642

Google Earth it appears that the nearest occupied structure is a house about 300 meters to the north of the site, or 313 meters from the antenna.



www.perdomomediagroup.com

Technical Consultant

qperdomo@perdomomediagroup.com

401-338-2642

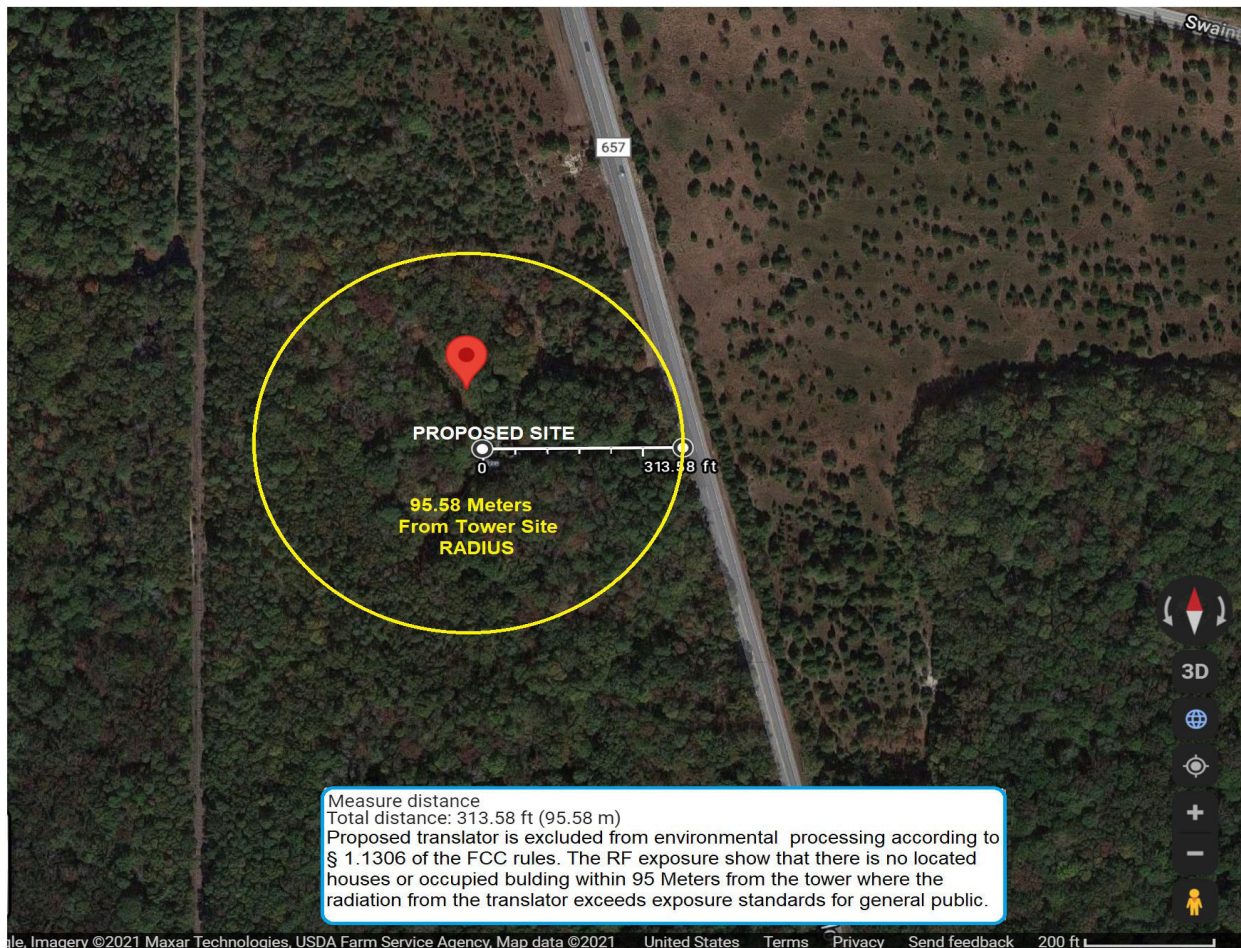
PERDOMO MEDIA GROUP (PMG)

25 Woodman St. Providence, RI. 02907. Tel 401-338-2642

Environmental

The antenna will be mounted on an existing tower shared with station WNJH. WNJH operates on 105.5 MHz, Ch. 288A. Proposed antenna will have a de minimis effect on public exposure limits at the base of the tower. There are no AM stations within 5 miles of the site. The only construction required will be the installation of a new feed line on the tower, and mounting of the antenna. No ground disturbance will be required. Below an aerial photo within 95 Meters Radius from the tower site.

Compliance with RF safety requirements in accordance with FCC part 1.1306(8)b)
The operation does not exceed human exposure limits. The satellite photo shows that there is not high-way, roads or population within 95 meters around the proposed tower site.



www.perdomomediagroup.com

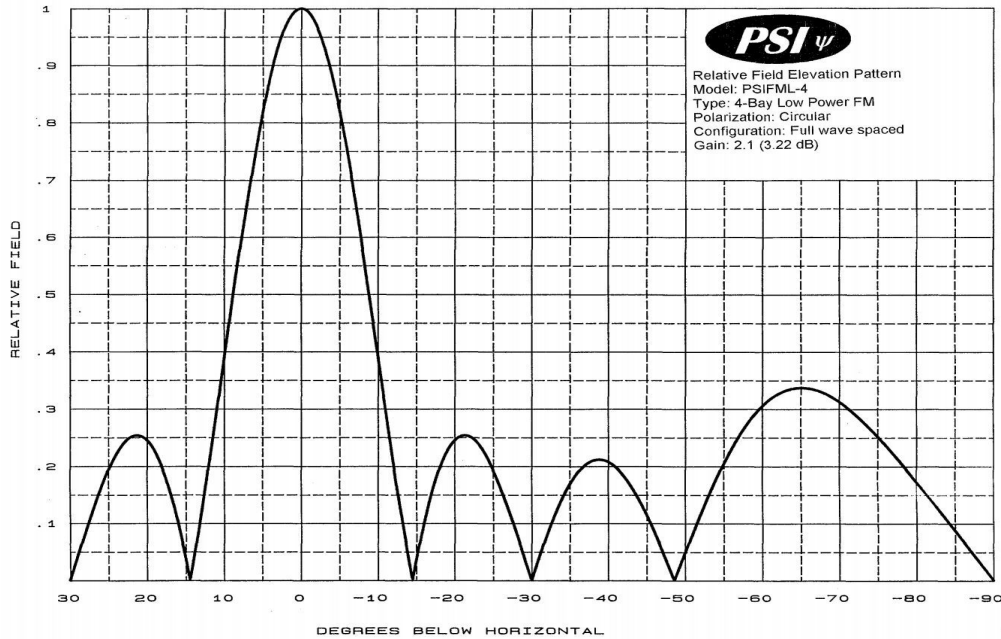
Technical Consultant

qperdomo@perdomomediagroup.com

401-338-2642

PERDOMO MEDIA GROUP (PMG)

25 Woodman St. Providence, RI. 02907. Tel 401-338-2642



Propagation Systems Inc.
Elevation Pattern Tabulation
Antenna: PSIFML-4 Special
Bay spacing: fullwave

Angle	Field	dB	Angle	Field	dB	Angle	Field	dB
-90.0	0.001	-60.000	-50.0	0.048	-26.315	-10.0	0.388	-8.216
-89.0	0.017	-35.177	-49.0	0.014	-36.928	-9.0	0.483	-6.326
-88.0	0.035	-29.156	-48.0	0.020	-34.179	-8.0	0.575	-4.804
-87.0	0.052	-25.634	-47.0	0.053	-25.584	-7.0	0.663	-3.563
-86.0	0.070	-23.136	-46.0	0.084	-21.489	-6.0	0.745	-2.553
-85.0	0.087	-21.198	-45.0	0.114	-18.890	-5.0	0.819	-1.738
-84.0	0.104	-19.626	-44.0	0.140	-17.049	-4.0	0.882	-1.095
-83.0	0.122	-18.297	-43.0	0.164	-15.714	-3.0	0.932	-0.609
-82.0	0.139	-17.153	-42.0	0.183	-14.750	-2.0	0.970	-0.269
-81.0	0.156	-16.151	-41.0	0.198	-14.085	-1.0	0.992	-0.067
-80.0	0.173	-15.260	-40.0	0.207	-13.676	0.0	1.000	0.000
-79.0	0.189	-14.460	-39.0	0.211	-13.512	1.0	0.992	-0.067
-78.0	0.205	-13.746	-38.0	0.209	-13.587	2.0	0.970	-0.269
-77.0	0.221	-13.104	-37.0	0.202	-13.914	3.0	0.932	-0.609
-76.0	0.237	-12.517	-36.0	0.188	-14.529	4.0	0.882	-1.094
-75.0	0.252	-11.989	-35.0	0.168	-15.492	5.0	0.819	-1.737
-74.0	0.266	-11.515	-34.0	0.143	-16.901	6.0	0.745	-2.552
-73.0	0.279	-11.095	-33.0	0.113	-18.959	7.0	0.664	-3.561
-72.0	0.291	-10.720	-32.0	0.078	-22.121	8.0	0.575	-4.802
-71.0	0.302	-10.392	-31.0	0.040	-27.861	9.0	0.483	-6.323
-70.0	0.312	-10.114	-30.0	0.001	-60.000	10.0	0.388	-8.213
-69.0	0.321	-9.881	-29.0	0.041	-27.700	11.0	0.294	-10.621
-68.0	0.327	-9.698	-28.0	0.083	-21.647	12.0	0.203	-13.855
-67.0	0.332	-9.566	-27.0	0.123	-18.221	13.0	0.116	-18.718
-66.0	0.336	-9.483	-26.0	0.160	-15.926	14.0	0.035	-29.007
-65.0	0.337	-9.460	-25.0	0.193	-14.301	15.0	0.037	-28.679
-64.0	0.335	-9.495	-24.0	0.220	-13.164	16.0	0.100	-20.013
-63.0	0.331	-9.594	-23.0	0.240	-12.412	17.0	0.153	-16.322
-62.0	0.325	-9.758	-22.0	0.251	-12.010	18.0	0.195	-14.220
-61.0	0.316	-10.005	-21.0	0.253	-11.942	19.0	0.225	-12.951
-60.0	0.304	-10.336	-20.0	0.245	-12.233	20.0	0.245	-12.233
-59.0	0.290	-10.761	-19.0	0.225	-12.951	21.0	0.253	-11.942
-58.0	0.272	-11.300	-18.0	0.195	-14.213	22.0	0.251	-12.010
-57.0	0.252	-11.968	-17.0	0.153	-16.313	23.0	0.240	-12.412
-56.0	0.229	-12.794	-16.0	0.100	-20.000	24.0	0.220	-13.164
-55.0	0.204	-13.816	-15.0	0.037	-28.643	25.0	0.193	-14.301
-54.0	0.176	-15.087	-14.0	0.035	-29.044	26.0	0.160	-15.918
-53.0	0.146	-16.691	-13.0	0.116	-18.729	27.0	0.123	-18.221
-52.0	0.115	-18.797	-12.0	0.203	-13.862	28.0	0.083	-21.647
-51.0	0.082	-21.727	-11.0	0.294	-10.626	29.0	0.041	-27.700
						30.0	0.001	-60.000

file: FML 4-bay elevation tabulation
revision: A
Date: 1/28/08

PERDOMO MEDIA GROUP (PMG)

25 Woodman St. Providence, RI. 02907. Tel 401-338-2642

Antenna Structure Registration

[FCC](#) > [WTB](#) > [ASR](#) > [Online Systems](#) > ASR Search

[FCC Site Map](#)

ASR Registration Search

Registration 1038532

[? HELP](#)

[New Search](#) [Return to Results](#) [Printable Page](#) [Map Registration](#)

Registration Detail

Reg Number	1038532	Status	Constructed
File Number	A0045396	Constructed	01/01/1981
EMI	No	Dismantled	
NEPA	No		

Antenna Structure

Structure Type TOWER - Free standing or Guyed Structure used for Commu

Location (in NAD83 Coordinates - [Convert to NAD27](#))

Lat/Long	39-07-32.0 N 074-49-25.0 W	Address	RT 659 S OF RTS 646 & RT 647 INT
City, State	CAPE MAY , NJ		
Zip	08210	County	CAPE MAY
Center of AM Array		Position of Tower in Array	

Heights (meters)

Elevation of Site Above Mean Sea Level	Overall Height Above Ground (AGL)
4.6	93.3
Overall Height Above Mean Sea Level	Overall Height Above Ground w/o Appurtenances
97.8	93.3

Painting and Lighting Specifications

FCC Paragraphs 1, 3, 12, 21

FAA Notification

FAA Study	81-AEA-84-OE	FAA Issue Date	04/08/1981
-----------	--------------	----------------	------------

Owner & Contact Information

FRN	Owner Entity Type
-----	----------------------

Owner

WBNJ FM
Attention To: SMR LEASING MARVIN WAXMAN
6845 WESTFIELD AVE
PENNSAUKEN , NJ 08110

P: (609)317-1795
F:
E: TEKTRON_1@AOL.COM

Contact

P:
F:
E: