

TECHNICAL SUMMARY
APPLICATION FOR AN AUXILIARY OPERATION
TV STATION WINK-TV
FORT MYERS, FLORIDA
CHANNEL 31 775 KW (DA) 370 m

1. The instant application is an auxiliary operation for WINK-TV, Fort Myers, Florida, which is authorized (CP) for operation on channel 31.¹ The proposed WINK-TV auxiliary operation will operate on digital channel 31 from its CP site location with a maximum ERP of 775 kW using an existing Dielectric model TFU-24WB directional antenna side-mounted at a height of 369 meters above ground level on the existing tower. There will be no change in the overall structure height of the authorized tower (ASRN 1319288).

2. The proposed auxiliary operation has been designed such that there will be no extension of the predicted noise-limited service contour of the auxiliary facility beyond that of the authorized main post-transition facility (see Figure 1 attached).

3. RFR Compliance: The proposed facilities were evaluated in terms of potential radiofrequency radiation (RFR) exposure at ground level to workers and the general public. The radiation center for the proposed DTV antenna will be located 369 meters above ground level. The total DTV ERP is 775 kW (horizontal polarization). A conservative vertical plane relative field value of 0.1 is presumed for the antenna's downward radiation (for angles below 60 degrees downward, see vertical plane relative field pattern attached). The calculated power density at a point 2 meters above ground level is 1.9 uW/cm² which is only 0.5% of the FCC's recommended limit of 383.3 uW/cm² for channel 31 for an uncontrolled environment.

Access to the transmitting site is restricted and appropriately marked with RFR warning signs. Furthermore, as this is a multi-user site, a formal RFR protection protocol is in effect in the event that workers or other authorized personnel enter the restricted area or climb the tower to ensure that appropriate measure will be taken to assure worker safety with respect to RFR exposure. Such measures include limiting the exposure time, wearing protective clothing, reducing power to an acceptable level

¹ See LMS File No. 0000144948.

or termination of transmitter output power all together until workers leave the restricted area.

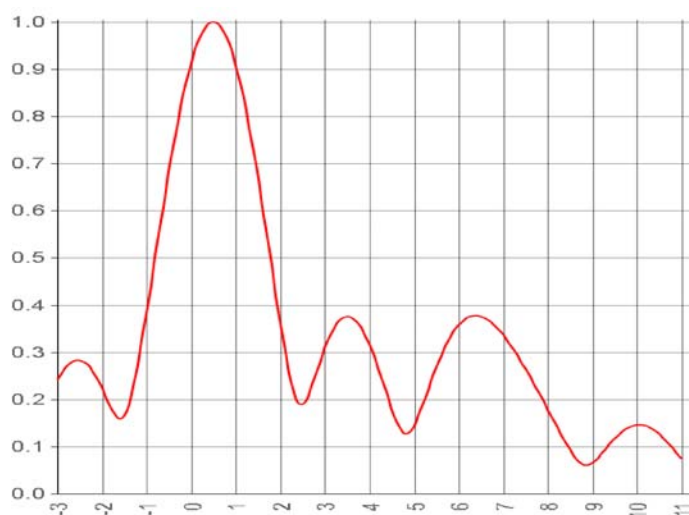
ELEVATION PATTERN

Exhibit No. **EL1**
Date **12 Sep 2018**
Call Letters **WINK**
Channel **50**
Antenna Type **TFU-24WB**
Location **FT Myers**
Customer **WINK**

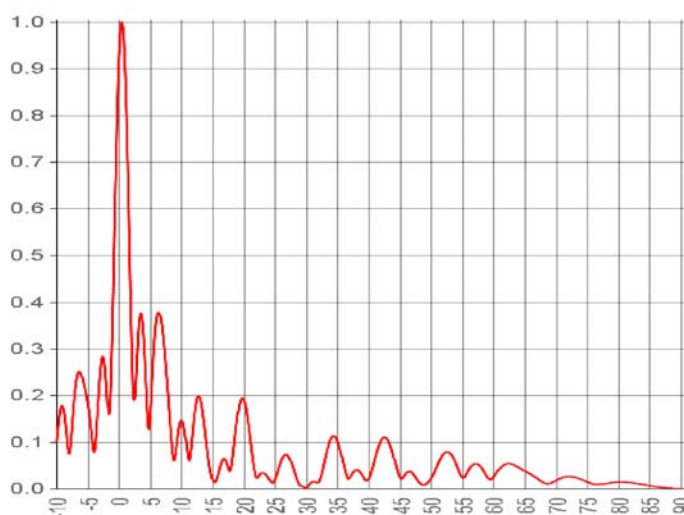
RMS Gain at Main Lobe **21.6 (13.35 dB)**

Beam Tilt **0.5 Degrees**

RMS Gain at Horizontal **18.0 (12.56 dB)**

Drawing # **24I2161050**
Calculated


Degrees below horizontal

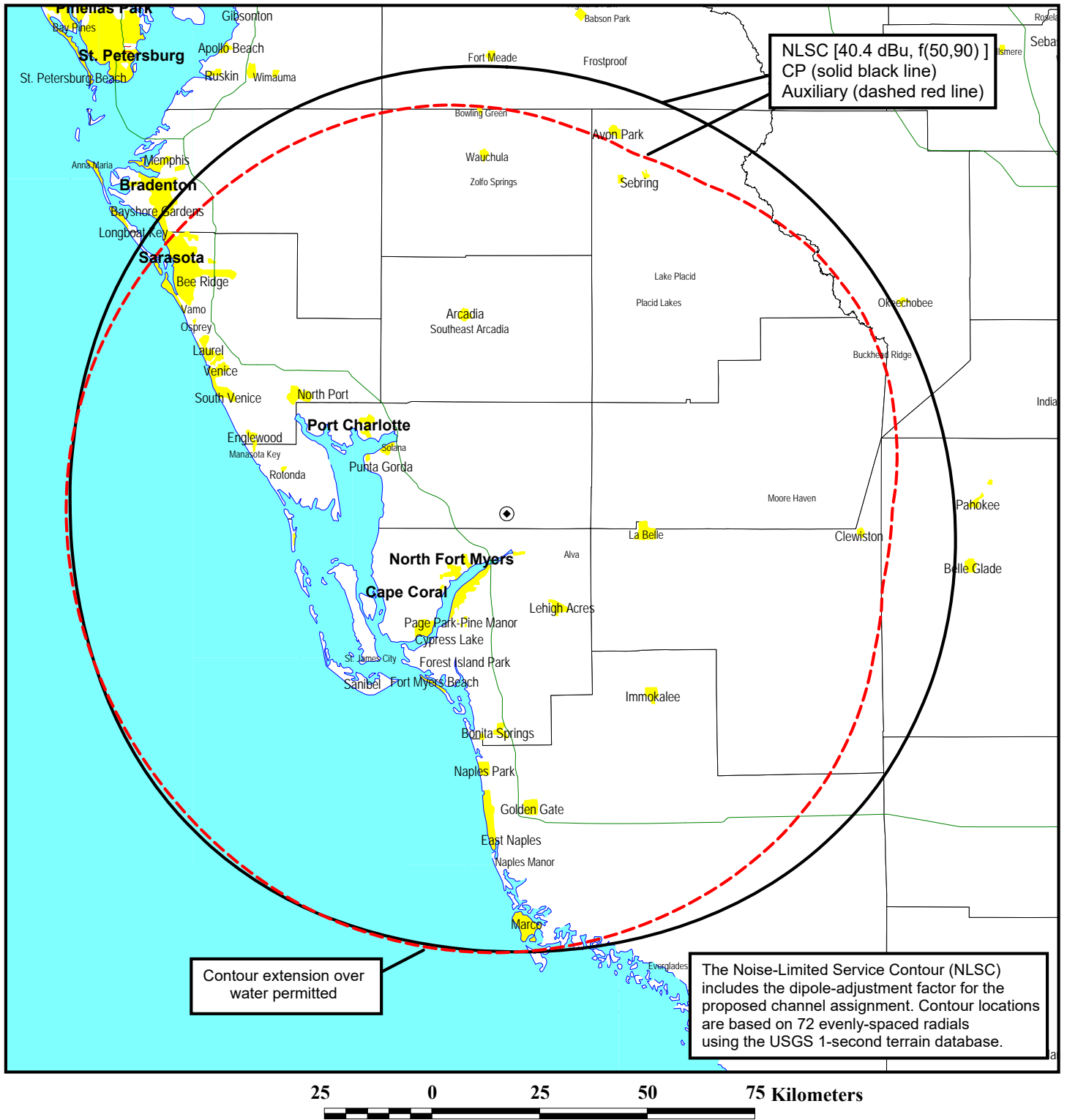


Degrees below horizontal

Angle	Field	Angle	Field	Angle	Field	Angle	Field	Angle	Field
-10	0.099	10	0.146	30	0.000	50	0.022	70	0.017
-9	0.176	11	0.074	31	0.014	51	0.049	71	0.023
-8	0.075	12	0.146	32	0.014	52	0.074	72	0.026
-7	0.208	13	0.194	33	0.062	53	0.076	73	0.024
-6	0.244	14	0.101	34	0.108	54	0.053	74	0.020
-5	0.184	15	0.020	35	0.103	55	0.024	75	0.014
-4	0.078	16	0.036	36	0.051	56	0.039	76	0.010
-3	0.242	17	0.063	37	0.023	57	0.053	77	0.009
-2	0.224	18	0.044	38	0.040	58	0.046	78	0.011
-1	0.382	19	0.154	39	0.029	59	0.025	79	0.013
0	0.913	20	0.191	40	0.021	60	0.024	80	0.014
1	0.909	21	0.112	41	0.064	61	0.043	81	0.014
2	0.360	22	0.025	42	0.103	62	0.053	82	0.013
3	0.309	23	0.034	43	0.106	63	0.052	83	0.011
4	0.317	24	0.021	44	0.069	64	0.046	84	0.009
5	0.145	25	0.019	45	0.024	65	0.038	85	0.006
6	0.358	26	0.059	46	0.033	66	0.030	86	0.004
7	0.337	27	0.072	47	0.034	67	0.022	87	0.002
8	0.178	28	0.041	48	0.016	68	0.013	88	0.001
9	0.066	29	0.007	49	0.009	69	0.011	89	0.000

This document contains proprietary and confidential information of Dielectric. It is to be used solely for the purpose for which it is provided. No disclosure, reproduction, or use of this document or any part of it may be made without the written permission of Dielectric.

Figure 1



FCC PREDICTED COVERAGE CONTOURS

AUXILIARY APPLICATION
DTV STATION WINK-TV
FORT MYERS, FLORIDA
CH 31 775 KW (DA) 370 M

du Treil, Lundin & Rackley, Inc. Sarasota, Florida