

ENGINEERING EXHIBIT

FILL-IN TRANSLATOR RELATIONSHIP TO PRIMARY STATION

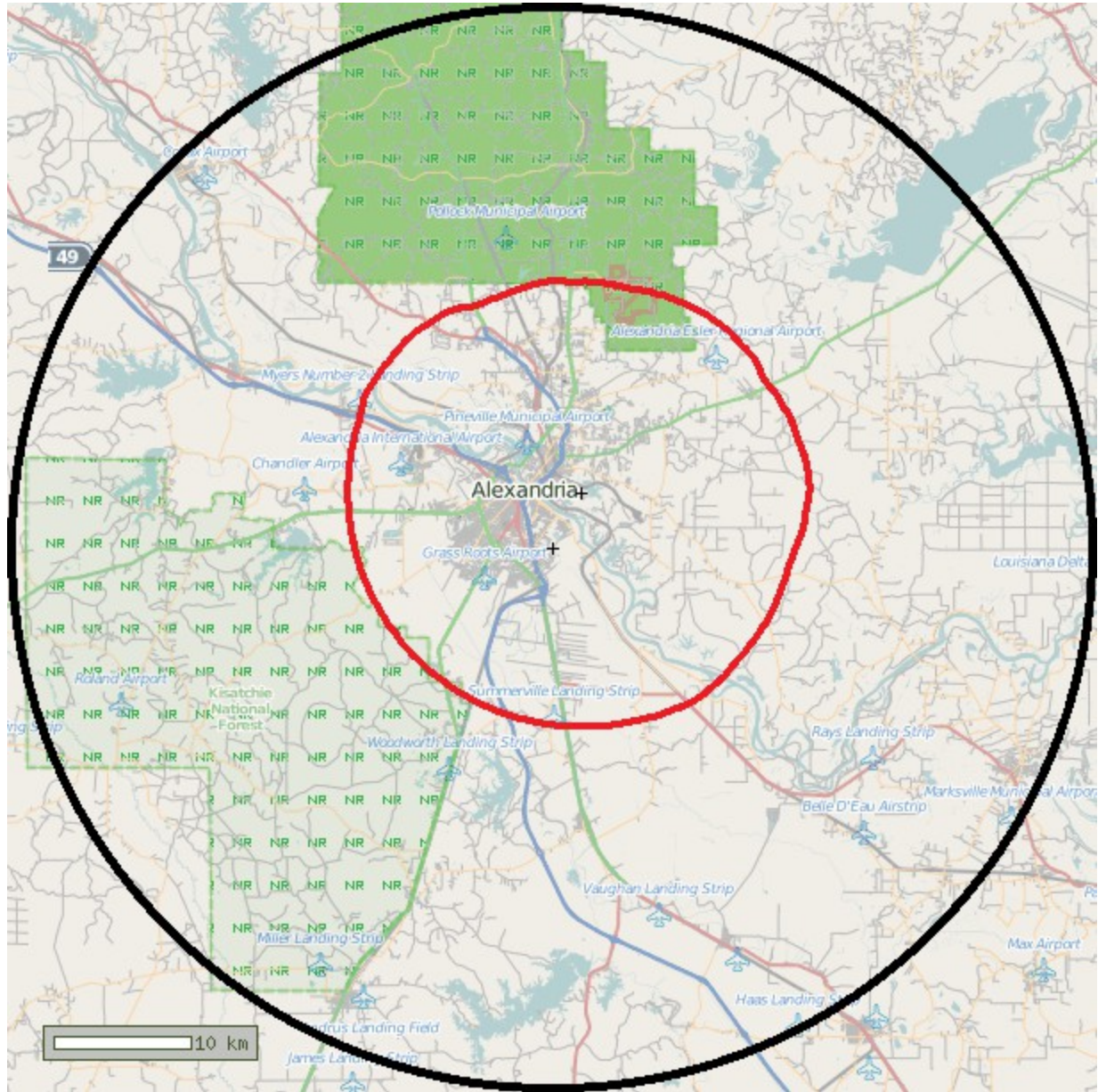


Figure 1: The map above depicts the F(50,50) 60 dBu contour of the proposed fill-in K234CY translator (Facility ID 200892, red contour) and a circle with a radius of 25 miles extending from the KDBS 1410 AM (primary station, Facility ID 32995, black contour) tower site. As shown above, there is no point at which the translator's F(50,50) 60 dBu service contour extends the KDBS contour beyond 25 miles.

OVERLAP SHOWING BETWEEN LICENSED AND PROPOSED FACILITY

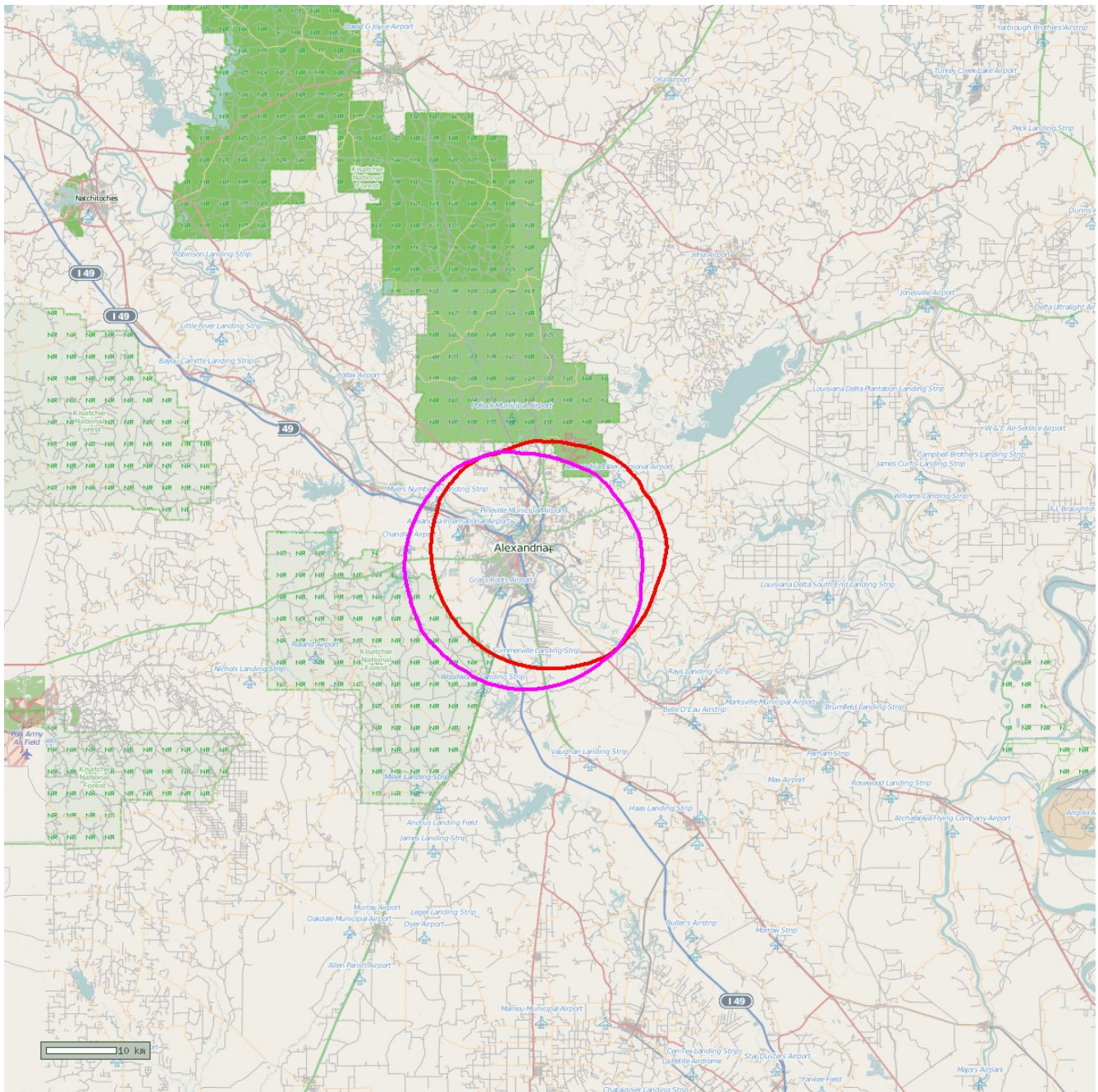


Figure 2: The map above depicts the F(50,50) 60 dBu contour of the proposed K234CY fill-in translator (Facility ID 200892, red contour) against the K234CY licensed facility (BLFT-20180117AAF). As shown above, there is substantial overlap between the two primary service contours. Therefore, it is respectfully concluded that the proposal herein constitutes a “minor change” application.

EXHIBIT - 74.1204 OVERLAP SHOWING

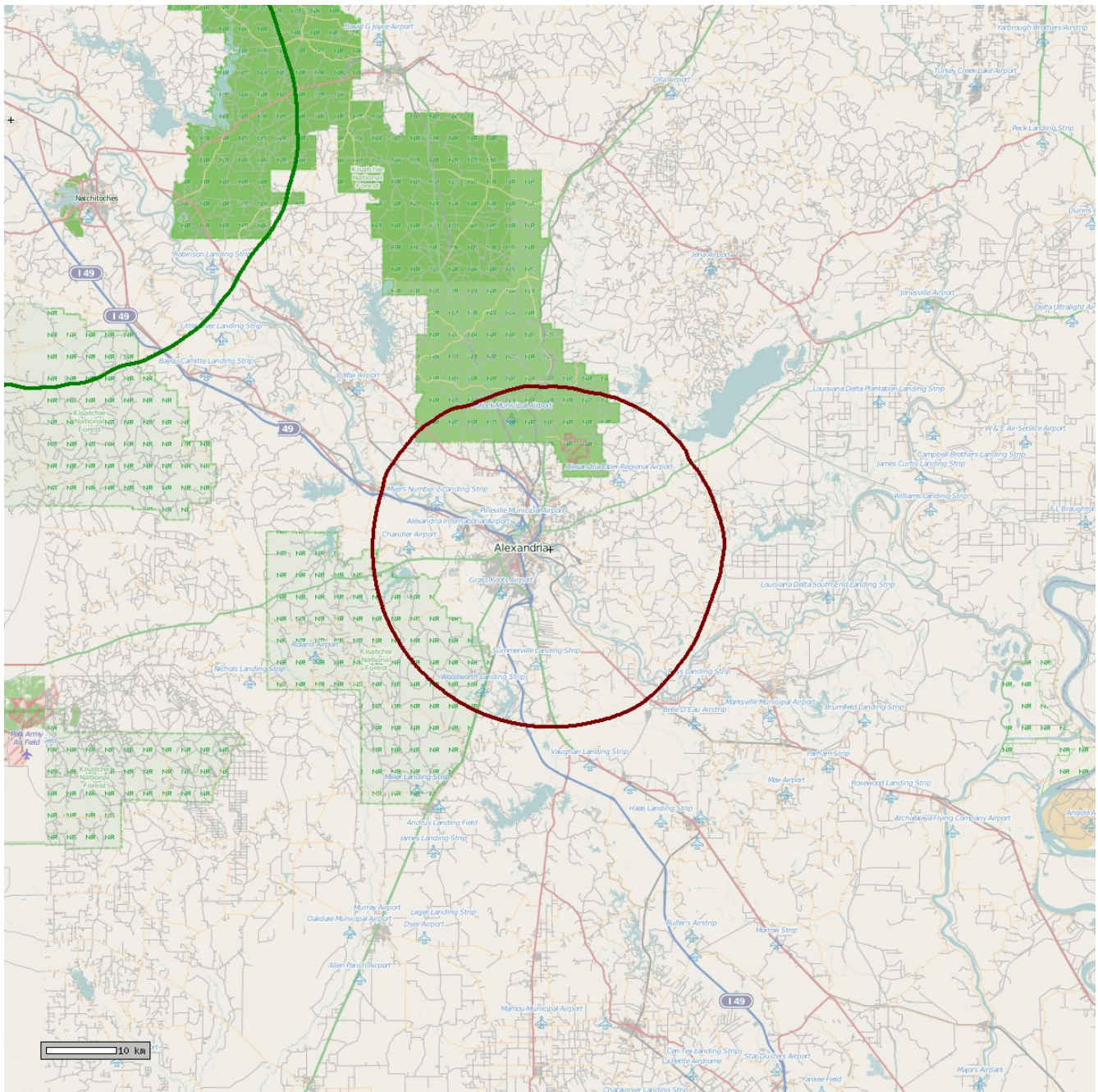


Figure 3: The map above depicts the F(50,50) 60 dBu contour of FM station KSBH 94.9 FM (Facility ID 4956, green contour) at Coushatta, Louisiana, and the F(50,10) 54 dBu interfering contour of the proposed K234CY fill-in translator (Facility ID 200892, dark red contour). As demonstrated above, there is no prohibited overlap between the two facilities.

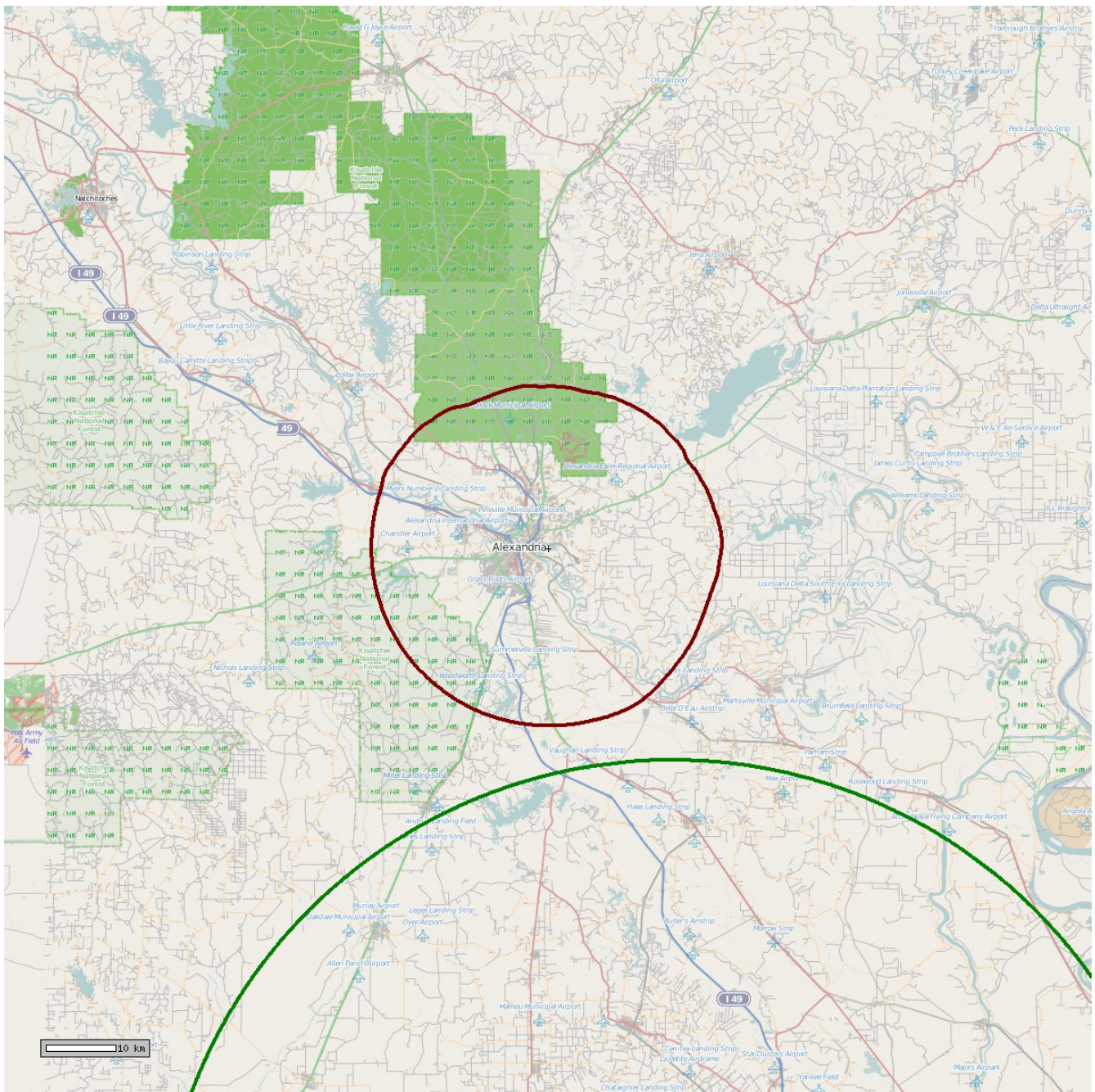


Figure 4: The map above depicts the F(50,50) 60 dBu contour of FM station KSMB 94.5 FM (Facility ID 41057, green contour) at Lafayette, Louisiana, and the F(50,10) 54 dBu interfering contour of the proposed K234CY fill-in translator (Facility ID 200892, dark red contour). As demonstrated above, there is no prohibited overlap between the two facilities.