



1300 NORTH 17th STREET, 11th FLOOR  
ARLINGTON, VIRGINIA 22209

OFFICE: (703) 812-0400  
FAX: (703) 812-0486  
www.fhhlaw.com  
www.commlawblog.com

DAVINA SASHKIN  
(703) 812-0458  
SASHKIN@FHHLAW.COM

December 15, 2020

**SUBMITTED ELECTRONICALLY VIA ECFS**

Ms. Marlene H. Dortch, Secretary  
Federal Communications Commission  
445 12th Street, S.W.  
Washington, D.C. 20554

Attn: Barbara Kreisman, Chief, Video Division, Media Bureau

**Re: Petition for Waiver to Allow Major Change Application  
WHNE-LD, Detroit, MI (Facility ID 168737)**

Dear Ms. Dortch:

Tait Broadcasting, LLC (“Licensee”), licensee of digital low power television station WHNE-LD, Detroit, Michigan (Facility ID 168737), seeks waiver of the Commission’s policy to “freeze” major changes to existing low power television stations adopted in 2010.<sup>1</sup> As demonstrated herein, the conditions necessitating the freeze are now moot and waiver will serve the public interest.

***WHNE-LD Ch. 3 Operations Cannot Serve the Viewers of the Community of License***

As a result of the post-Incentive Auction repacking of full-power and Class A television stations, WHNE-LD was displaced from its licensed UHF channel 20. The only channel then-available for displacement was low-VHF channel 3. As previously explained to the Commission in Licensee’s 2019 application for modification of license (LMS File No. 0000074644) and in its

---

<sup>1</sup> *Initiation of Nationwide First-Come, First-Served Digital Licensing for Low Power Television and TV Translators Postponed Until Further Notice*, Public Notice, 25 FCC Rcd 8179 (MB 2010) (the “Major Change Freeze PN”).

request for Special Temporary Authority for increased power operation (LMS File No. 0000074645), WHNE-LD's experience on channel 3 has been abysmal. It is well-understood that highly industrial communities such as Detroit generate high levels of man-made noise which interferes with television reception in the VHF band. In addition to the noise interference, many cable companies use channel 3 for their distribution network. These factors combine to make continued operation of WHNE-LD on channel 3 untenable, even at the higher power level allowed pursuant to the STA.

The Commission has acknowledged for years that "VHF channels have certain characteristics that have posed challenges for their use in providing digital television service," noting that "the propagation characteristics of these channels allow undesired signals and noise to be receivable at relatively farther distances, nearby electrical devices tends to emit noise in this band that can cause interference, and reception of VHF signals requires physically larger antennas [than for UHF reception]."<sup>2</sup> Both the Commission staff and an independent engineering firm confirmed more than a decade ago that there is "large variability in the performance (especially intrinsic gain) of indoor antennas available to consumers, with most antennas receiving fairly well at UHF and the substantial majority not so well to very poor at high-VHF," noting it was expected that indoor antennas would fare even more poorly in receiving low-VHF channels.<sup>3</sup> Further, the Commission confirmed that "the engineers participating in our Broadcast Engineering Forum indicated the view that the options for improving TV service on the VHF channels, especially those in the low-VHF band, are limited...." concluding that "a power increase would not be sufficient to compensate for

---

<sup>2</sup> Innovation in the Broadcast Television Bands: Allocations, Channel Sharing and Improvements to VHF, NPRM, 25 FCC Rcd 16498 ¶ 42 (2010) ("VHF Improvements NPRM").

<sup>3</sup> *Id.*

reception problems caused by the increased RF noise level in the band and physical limitations on the size and efficiency of the transmit and receive antennas.”<sup>4</sup> Licensee’s own experiences with various makes and models of antennas, and the experiences of its viewers, as well Licensee’s power increase to intended to mitigate these issues, confirm that the technology in the indoor antenna marketplace has not improved in the decade since these engineers reached their conclusion about the reception of low-VHF digital channels.

As demonstrated in the emails and Facebook posts from viewers of WHNE-LD attached hereto at Exhibit A (which includes a map indicating the locations of the viewers within the service contour of the station), many viewers experienced a sudden and complete loss of the station’s signal when WHNE-LD transitioned from RF channel 20 (virtual channel 14) to RF/virtual channel 3 in April. Other viewers experience ongoing pixilation and intermittent signal strength, likely as a result of interference from the man-made noise in Detroit. As can be seen especially in the Facebook postings, Licensee has engaged with viewers to offer technical advice. Unfortunately, short of purchasing and installing UHF-capable antennae for viewers, there is no solution that will allow WHNE-LD on Ch. 3 to be able to be received by a large percentage of the over-the-air OTA viewers within the station’s licensed contour.

### ***Proposed Operation***

To overcome the demonstrated impediments to reception on channel 3, Licensee has identified proposed WHNE-LD operation on channel 30 with 14kW power, transmitting from the station’s current tower. See Exhibit B. This proposal cannot be filed in the Commission’s Licensing and Management System, because LMS does not permit a LPTV licensee to select a

---

<sup>4</sup> *Id.* at ¶ 45.

major change application option due to the freeze on such applications. Therefore, a waiver is necessary.

### ***Waiver Request***

The Commission may grant a waiver for good cause shown.<sup>5</sup> A waiver is appropriate where the particular facts make strict compliance inconsistent with the public interest.<sup>6</sup> In considering a waiver, the Commission may take into account considerations of hardship, equity, or more effective implementation of overall policy on an individual basis.<sup>7</sup> Such a waiver is appropriate if circumstances warrant a deviation from the general rule, and such deviation will serve the public interest.<sup>8</sup>

As a low power television station, WHNE-LD is not carried by any multichannel video programming distribution (“MVPD”) services; it reaches its audience entirely via over-the-air viewership. It is therefore paramount that Licensee finds a solution to the reception issues plaguing WHNE-LD in order to ensure viewers in Detroit have access to its twelve (12) channels of high-quality, free, over-the-air broadcast programming. Failure to find such resolution will result not only in the loss of advertising revenue, which has already taken a hit from COVID-19, but in the loss of programming altogether – resulting, ultimately, in shutting down the station if there is no revenue source.

WHNE-LD broadcasts 12 digital streams of popular programming, including family-friendly Light TV, faith-based SonLife, classic television and movies on RetroTV and Get TV, automotive programming on REV’N (which, you can imagine, is huge in Motor City!), as well

---

<sup>5</sup> 47 C.F.R. § 1.3.

<sup>6</sup> *Northeast Cellular Tel. Co. v. FCC*, 897 F.2d 1164, 1166 (D.C. Cir. 1990).

<sup>7</sup> *WAIT Radio v. FCC*, 418 F.2d 1153, 1159 (D.C. Cir. 1969), *cert. denied*, 409 U.S. 1027 (1972); *Northeast Cellular*, 897 F.2d at 1166.

<sup>8</sup> *Northeast Cellular*, 897 F.2d at 1166.

as 24/7 national news from NewsNet. More than a third of the households in the Detroit DMA do not subscribe to an MVPD, a number that is expected to grow.<sup>9</sup> The availability of free, high quality, over-the-air television is therefore all the more important, and the FCC should remove obstacles preventing broadcasters from ensuring their viewers can receive their programming.

Denial of the requested waiver would be inconsistent with the public interest, as there is a clear impediment to WHNE's ability to reach viewers but there no longer exists a clear government interest in limiting channel changes to ensure a stable television technical database. The DTV transition formed the original basis for freezing the ability of LPTV licensees from making major changes to their facilities other than displacements, followed by the National Broadband plan (which became the Incentive Auction and subsequent post-auction transition, or "repack")<sup>10</sup>. The DTV transition concluded in 2009 and the post-Incentive Auction transition ended in July 2020.<sup>11</sup> The Commission claims the circumstances are such that lifting the freeze on full-power and Class A station major changes is advisable, but that LPTV stations must continue to wait while because some "are still being displaced as a result of modifications by full service stations as they technically adjust to their new repacked channel locations."<sup>12</sup> The Commission provides no evidence of continued "adjustments" by full-power and Class A stations to justify the ongoing stranglehold on LPTV stations. Moreover, analysis of applications filed by full-power and/or Class A stations after their channel-change freeze was lifted through

---

<sup>9</sup> "Advertising On Detroit Radio Reaches Pay-TV's Cord Cutters," Advertise In Detroit (July 30, 2020 (citing research from eMarketer), *available at* <https://blog.advertiseindetroit.com/advertising-on-detroit-radio-reaches-pay-tvs-cord-cutters>).

<sup>10</sup> See Major Change Freeze PN.

<sup>11</sup> *Media Bureau Lifts Freeze on the Filing Of Television Station Minor Modification Applications and Rulemaking Petitions Effective Fifteen Days After Publication in the Federal Register*, DA 20-1269, Public Notice (Oct. 27, 2020).

<sup>12</sup> *Id.* at 2-3.

the date hereof reveals no continued uncertainty in the Detroit DMA.<sup>13</sup> The public interest weighs in favor of permitting LPTV channel changes – if not by complete lifting of the freeze, then certainly by waiver where good cause is shown, as is true for WHNE-LD.

***Conclusion***

The public interest would be best served by eliminating the freeze on LPTV major change applications. Failing that, good cause exists to waive the major change application freeze policy as it applies to WHNE-LD, thus allowing Licensee to file for the proposed channel change and granting the viewers of Detroit substantially improved over-the-air broadcast television service as soon as possible.

Respectfully submitted,



---

Davina S. Sashkin  
*Counsel for Tait Broadcasting, LLC*

cc: Kevin Harding ([kevin.harding@fcc.gov](mailto:kevin.harding@fcc.gov))  
Mark Colombo ([mark.colombo@fcc.gov](mailto:mark.colombo@fcc.gov))

---

<sup>13</sup> While Licensee does not know whether there remains uncertainty about post-transition full-power and Class A facilities around the country, it can be assumed that any remaining channel and technical adjustments are now known pursuant to applications filed on a first-come, first-served basis upon the lifting of the channel change freeze for these stations on November 27, 2020.

## **EXHIBIT A**



**WHNE Detroit**

@WHNEDetroit · TV Channel

 Send Message

Home

Reviews

Videos

More 

 Like







**WHNE Detroit**

April 2 · 

We tried this antenna right in the parking lot at 16 Mile and Vandyke in Sterling Hts. this evening and it picked up or station just fine, crystal clear.

[https://www.amazon.com/Winega.../dp/B001TIQ6SW/ref=sr\\_1\\_4...](https://www.amazon.com/Winega.../dp/B001TIQ6SW/ref=sr_1_4...)







AMAZON.COM

**Winegard Company Compact Video Antenna (HD7000R)**

Compact "Yagi" antenna with uniform gain across both the UHF an...

11

12 Comments 1 Share



Like



Comment



Share



Most Relevant



Write a comment...

**Len Scheuer**

you need a bit more power to get your signal to the northern end of the county. about 12-14 more miles perhaps?

Like · Reply · 36w



Author

**WHNE Detroit**

We are at our maximum power output now.

Like · Reply · 36w

**Len Scheuer**

**WHNE Detroit** most sorry to hear of this.

Like · Reply · 36w



Write a reply...

**Paul Sposite**

I get the station just fine in Westland

Like · Reply · 36w

**Matthew Thiesmeyer**

Are you guys going up and down right now or am I just loosing you part of the day ?

Like · Reply · 36w



Author

**WHNE Detroit**

Our signal is stable, you may be losing us to weather or a weak incoming signal to your antenna.

Like · Reply · 36w

**Matthew Thiesmeyer**

your only reading 38 - 40 so I'm guessing it's me

Like · Reply · 36w





John Wrobel

**WHNE Detroit** duh no really.maybe i should buy a low vhf antenna that nobodys sells .huh.

Like · Reply · 35w



Write a reply...



Cora Wilson

Parking Lot...okkkkkayyyyy...have you tried going out further .....like uhmmmmmm.....Allen Park, Dearborn, Grosse Pointe ??????????????????????

Like · Reply · 36w · Edited



Jack Marter

They said they went to Sterling Heights

Like · Reply · 36w



John Lawton

Cora Wilson that lot was Sterling Heights! Bottom line is that many of you will have either replace or upgrade your antennas.

Like · Reply · 36w · Edited



Write a reply...



Moe Worthington

I was receiving then did a scan and lost it. Just found old rabbit ears did a scan and still no get TV.

PINNED POST

Like · Reply · 36w



**WHNE Detroit**

September 4 ·



WHNE is happy to announce the exciting new service here in Detroit! You can now watch all 12 WHNE channels without using an antenna!

Please SHARE this post with your family and friends!

Locast is a public service to Americans, providing local broadcast signals (like WHNE) over the Internet. All you have to do is sign up online and certify that you live in the Detroit TV market, then, you can select among all the local broadcasters and stream your favorite local station. ... **See More**





## WHNE Detroit

@WHNEDetroit · TV Channel

 Send Message



WHNE Detroit

April 2 · 

Update 4/2/2020

We've been reading your posts and want to remind everyone that the receive antenna at your home needs to be capable of receiving "Low VHF" signal or it will not work well enough to watch WHNE.

One of our engineers is driving around testing several different antennas that we purchased to test to see which would be best for our



WHNE Detroit

 Send Message

 Like



on the map shows that if you have an antenna that is designed for Low VHF our signal should be good for "Easy Indoor" antennas. If you live farther out it will require a slightly larger antenna the farther you are from Oak Park.

If you're inside the GREEN area and still can't get WHNE, it's likely because your antenna isn't designed for Low VHF. As I mentioned

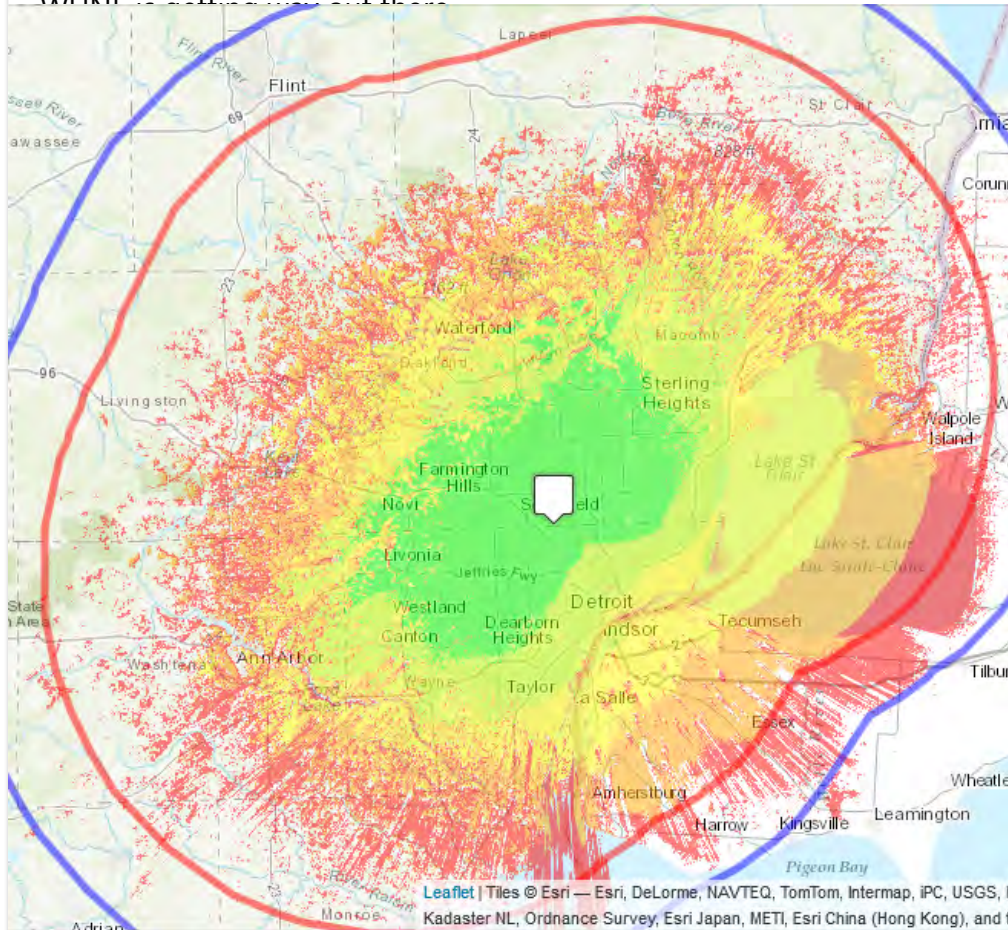






real expensive. We'll keep you posted with model numbers of the antennas that work well.

If you live out toward the RED line, it's where you will likely require an outside antenna mounted above your roof. We have a viewer in Capac, MI and another near Marine City, MI, so with a good outside antenna



35

193 Comments 1 Share

Like

Comment

Share



Most Relevant



Write a comment...



**Mark Blackwell**

I live in the area of Michigan Avenue and Wayne Roads. I've scanned about 3 times. No luck. 😞. I have "Terk" indoor HDTV Antennas on my televisions.

Like · Reply · 36w



2



**Cora Wilson**

You & 98 % of the viewing area. WHNE is a complete joke !





Jack Marter

**Cora Wilson** That is an exaggeration and you know it. You have already made your point.

Like · Reply · 36w



1



Author

**WHNE Detroit**

**Cora Wilson** what part of town do you live in? I would like to do a signal strength test in your area.  
Thanks

Like · Reply · 36w



**Mark Blackwell**

**Cora Wilson** ....

Near Annapolis and Howe Roads.

Like · Reply · 36w



Write a reply...



**Scott Sabo**

I just did a search for a low band VHF antenna and they have all been discontinued. Question: Why low power? Why low VHF? Why such a small coverage area? I mean all the other locals are reachable for every in the Detroit market. You have some great cha... **See More**

Like · Reply · 36w



2

Hide 11 Replies



**Cora Wilson**

To Save money & use cheapo antenna materials.

Like · Reply · 36w



1



**Scott Sabo**

**Cora Wilson** that is short sighted of them because it is going to affect advertising rates. Really, what is the point of running a station that even people living in the green area not going to get using the same antenna that works for everyone else.

Like · Reply · 36w



3



**Cora Wilson**

**Scott Sabo** Exactly !! Their loss ! Not ours. I'm fine with 50+ channels locally !

Like · Reply · 36w



1



**Scott Sabo**

**Cora Wilson** I really just wanted them for for drive-in, Retro, and the news channel. Oh well like you



20

**Scott Sabo**

I picked up the signal again around 10:50 last night and have had it since with my big antenna. Lost it around 1:00 yesterday.

Like · Reply · 36w

**Scott Sabo**

Well, had a solid watchable picture with my big antenna from 10:50 last night until 11:40 today. It has started to drop out now, still watchable but I am guessing not for long.

Like · Reply · 36w



1

**Scott Sabo**

Totally gone at 12:12pm

Like · Reply · 36w



1

**Scott Sabo**

I am going to build a folded dipole and see if I can get it to work.

Like · Reply · 36w



1



Author

**WHNE Detroit**

**Scott Sabo** We will be posting a list of Low VHF antennas very soon. About 14 in all.

Like · Reply · 35w

**Rick West**

**WHNE Detroit** where are you finding VHF Lo antennas? All the one's I see have been discontinued.

Like · Reply · 34w

**Jack Marter**

**Cora Wilson** Actually the low VHF materials are more expensive

Like · Reply · 36w



Write a reply...

**Craig Hanton**

I'm up between Holly and Ortonville, and my HD Stacker can't pull you in. I'm NOT taking it down and replacing it. It's up at 53ft and too dangerous at my current age. Why didn't you guys go for rf8 to avoid this obvious issue????

Like · Reply · 36w



6

Hide 12 Replies

Most Relevant is selected, so some replies may have been filtered out



20



Andy Manor

**Craig Hanton** they can't because Fox is in rf 7 and CBC is rf 9. The FCC won't allow any station to be on an rf that is adjacent to another station in that market or adjacent market.

Like · Reply · 36w



Craig Hanton

No true with DTV, WDIV is on rf32 and WMYD is on rf31, for example.

Like · Reply · 36w



Author

WHNE Detroit

**Craig Hanton** WUDT-LD was given it.

Like · Reply · 36w



Craig Hanton

**WHNE Detroit** ....trade them, since practically NO ONE watches that channel.

Like · Reply · 36w



4



Andy Manor

**Craig Hanton** WDIV was moved to rf 25, but I do stand corrected with WUDT

Like · Reply · 36w



Craig Hanton

Andy Manor WXYZ is on rf25....and WPXD is on rf24. Another adjacent channel.

Like · Reply · 36w · Edited



1



Andy Manor

**Craig Hanton** I stand corrected and they must have changed the rule because that used to be a rule in the old analogue days.

Like · Reply · 36w



1



Chuck Reti

**Andy Manor** Digital TV has very different engineering criteria and adjacencies are not so much an issue. Both the first DTV and the new repack channels have many adjacent, some on the same tower. Besides interference and spacing, the old analog 14-83 UH... **See More**

Like · Reply · 36w



1



Mark Michaels

**WHNE Detroit** I lost them also.

Like · Reply · 36w



2



20



1



2

**Mary Farley**

I live in an area, that is part green and part yellow. Im getting a very scrambled pic and no sound! So cant watch it? I hope, there is an indoor antenna, that I can get. Cant get on the roof. I miss it.

Like · Reply · 36w

**Joe Magetlik**

**WHNE Detroit** add daystar for free to your lineup and ask them to use their slot of vhf 8 save yourself a lot of headache's and viewers.

Like · Reply · 36w

**Jack Marter**

**Joe Magetlik** Daystar would need to downgrade to SD, and one of WHNE's channels would have to be removed.

Like · Reply · 36w

Most Relevant is selected, so some replies may have been filtered out.



Write a reply...

**Dan LaTour**

I live in Flat Rock, bought an Antop antenna it's the big boy model 85 mile range at 15 ft. I use mine indoors and pick your station perfect most days, like the old days cloudy windy rainy days affect it at this distance away. Great station.

Like · Reply · 36w · Edited

**Dan LaTour**

Ok, since I haven't ran channel scan since you all went down, and guess what? No signal. Until I get my antenna outside on a pole, I guess you are too far, never used to be. No matter the excuse, you have lost many viewers. When an upgrade gets you less, it's not one. Hopefully in the future things will change. I get plenty of other channels here. Thanks for your time.

Like · Reply · 36w



Author

**WHNE Detroit**

**Dan LaTour** I just looked up the Big Boy specifications. They say that it is a Low VHF antenna but it is not. 87.5 to 230 MHz makes it FM and Hi VHF. Low VHF starts at 54MHz to 88MHz. WHNE is in the Low VHF band at 63 MHz.

Like · Reply · 35w







Dan LaTour

**WHNE Detroit** well I bought what I bought to watch T.V. with. And before you changed I could get you everyday of the week with that antenna. I didn't switch frequencies you did. That not my antennas fault. I'm not here for you, your supposed be here for me. Until you fix you, I'm good with the situation. I don't need another antenna, you do.

Like · Reply · 35w



Write a reply...



Craig Hanton

I just heard from a friend in Clarkston that bought a HUGE antenna last summer, in anticipation of your change to RF3. It's one of those Winegard 8200's....a behemoth. I know, I put it up for him. We also installed a really good, low noise pre-amp. He ... **See More**

Like · Reply · 36w



Rick West

**Craig Hanton** They've been saying a preamp can make their signal worse. Maybe try without and see if it improves?

Like · Reply · 36w



Rick West

I'm in Lk Orion, have a huge VHF antenna (20+ years old) in my attic with no preamp on that antenna and I get it just fine.

Like · Reply · 36w · Edited



Write a reply...



Bob Papich

Welcome Back! Getting much better picture and sound (NW Detroit, old rooftop ant.) on Ch3. I am hooked on "The Doctors". Just in time to see a pivotal episode. Thanks!

Like · Reply · 36w





1



2

**Mat Smith**

Nope ,as your the FIRST station in the area to attempt low VHF you really cut yourself out of many of the households.Low VHF has always been a difficult thing for many antenna's already out there. Even of the UHF antenna's can pick up High VHF .So not too many are going to change an antenna that already picks up 60 plus changes to get one that took the FIRST low VHF in the area .Its a sad loss but we make due with what works .Area coverage means nothing if the antenna design relates to a big yagi with bipoles required to receive the signal.as ATSC 1.0 has many issues and until ATSC 3.0 takes off its going to effect you sales revenue.Best of luck

Like · Reply · 36w



4

**Thomas A. Beck**

Haven't been able to get the signal at my house or the GF's house 48240 and 48154, both in the green zone. I have tried with a variety of antennas including the old fashioned set top rabbit ears that were used on my 1975 Sharp tv, a rooftop antenna I bought in the mid-1980s, a Radio Shack rabbit ears, an amplified Radio Shack rabbit ears/flat combo (both with and without power) an RCA indoor/outdoor antenna, an RCA flat antenna and a Terk flat antenna. I even ran a cable out on the east-facing deck to one of the rabbit ear antennas and had no signal.



Like · Reply · 36w · Edited

**Dave Dion**

No signal out here in Bruce Township (Romeo 48065). I have 2 antennas in my attic and boosters. Worked great with old digital channel.

Like · Reply · 36w



1

**Dave Dion**

Forgot to add, I have low VHF antenna.

Like · Reply · 36w · Edited

**Dave Dion**

I think you got the Obama FCC deal on the new frequency agreement. You can keep your doctor, I mean TV Channels.

Like · Reply · 36w



1

**Cora Wilson**

You & 98% of the viewing area. WHNE is a total JOKE !

Like · Reply · 36w



20



Like · Reply · 35w



Write a reply...

**Len Scheuer**

richmond area here. 31 mile rd and gratiot. i have a good antenna on the chimney and i get nothing from you guys. used to come in half way decent on good days. now, nothing. can/will you turn up the power and increase the signal?

Like · Reply · 36w

**Jack Marter**

They're at the legal power limit already

Like · Reply · 36w

**Cora Wilson**

Len, it's you & 98 % of the viewing area. WHNE don't seem to give a crap.

Like · Reply · 36w

**Rick West**

**Cora Wilson** you're not being fair to WHNE. They didn't choose this. The government forced it on them. The government also sets the broadcast power level. The fact that they're roaming the streets testing antennas means they care a lot if you can re... [See More](#)

Like · Reply · 36w



Write a reply...

**Robert E Witzke**

I live in Sterling Heights 48313 off of Clinton River Rd near the Henry Ford II High School. The signal is Perfect!!! I have an Antop AT-400BV Big Boy Low VHF/High VHF/UHF Flat Panel Antenna with the VHF rods sticking out of the sides. It's mounted up ... [See More](#)

Like · Reply · 36w

**Mark Stockton**

I took channels out of my tv because they do not come in all the way with an antenna 10feet above the house. I will miss your channels but not end of world. 94 southfield Taylor

Like · Reply · 36w

**Lee Bolin**

Im in pontiac and cant receive.you came in good before.I have an outside clearstream antenna





Author

**WHNE Detroit**

ClearStream antennas are primarily for UHF. WHNE channel 3 is in the low VHF band. 54MHZ to 88MHZ.

Like · Reply · 35w



Write a reply...



**Chuck Reti**

Attic antenna on main set, good. other sets on indoor flat card U/Hig-V antennas, no go. NW Detroit

Like · Reply · 36w



**Marty Taylor**

I just looked to see how far away you are just guessing about 70 miles as the bird flies I do pickup all the other chanals in Detroit with no problems

Like · Reply · 35w



**Michael Bengle**

I am in Garden City and you guys really craped the bed on this one why would a religious channel like wudt get a better frequency than you you are the big losers in all of this

Like · Reply · 36w



**Jeff Clark**

Oh my, what a bunch of whiners!! Why didnt you do this? Why didnt you do that? They didnt, it's done, live with it get over yourselves!!!

Like · Reply · 36w



**David G. Pike**

Glad to see the Propagation Map, THANKS!!

Like · Reply · 36w



**Victor Armaly**

I live in Saint Clair Shores and have a outdoor antenna, but I don't get your channel, I love your channel, any ideas

Like · Reply · 36w



**John Lawton**

**Victor Armaly** is it one of those large V shaped antennas?

Like · Reply · 36w

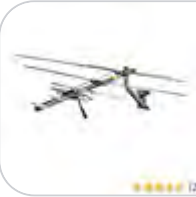




Author

**WHNE Detroit**

You'll need something like this

[https://www.amazon.com/Winega.../dp/B07Y2MN2QX/ref=sr\\_1\\_3...](https://www.amazon.com/Winega.../dp/B07Y2MN2QX/ref=sr_1_3...)

AMAZON.COM

Winegard YA7000C TV Antenna with Mount, VHF-Low and Hig...

Like · Reply · 36w

**Victor Armaly**

I bought an antenna that gets to hundred mile radius, but it does not say hi or low, can I send you a picture?

Like · Reply · 35w



Author

**WHNE Detroit****Victor Armaly** Brand and Model # please

Like · Reply · 35w

**Victor Armaly**

Like · Reply · 35w

**Victor Armaly**

Channel master antenna advantage 100

Like · Reply · 35w



Author

**WHNE Detroit**

**Victor Armaly** According to the specs you should be able to receive WHNE no problem. Make sure the antenna is pointed towards Oak Park.

Like · Reply · 35w



Write a reply...





Dan Aro

I'm in Plymouth, main and Ann arbor road. Channel 3 is coming in loud and clear. Clearstream Max antenna mounted about 8 feet off the ground, and a channel master cm3412 amplifier. Thanks for getting back and running. Missed ya.

Like · Reply · 36w



1



Joe Magetlik

Dan, is that the antenna with 2 circles or the 4 circles and does it have the long horizontal element in the middle??? thx trying to find the right one to pick up vhf3...

Like · Reply · 36w



Dan Aro

**Joe Magetlik** not working for me. Maybe one day I can get it. I get 2, 4, 7 9, 20, etc. You need to increase your power, otherwise it's not possible.

<https://m.youtube.com/watch?v=DabEFEeykq8#menu...> See More



YOUTUBE.COM

ClearStream 2MAX Indoor Outdoor HD TV Antenna...

Like · Reply · 36w



Dan Aro

14 was good, 3 is not. Can't argue that.

Like · Reply · 36w



1



Joe Magetlik

**Dan Aro** ok thx I wont waste my money then thx for the reply

Like · Reply · 36w



1



Dan Aro

**Joe Magetlik** this channel messed up IMO, going from 14 to 3 IMO. Low power, heck I get 38 too.

Like · Reply · 36w



1



Write a reply...



Quentin P. Dandybrook

My antenna picks up vhf but, it will no longer pickup any of your stations. Have you considered streaming any of them?



20



1



2

**Mark Michaels**

So if we can ACTUALLY find a low VHF antenna that nobody but radio shack seems to carry, will we lose all our other channels?

And mine needs to be indoor as I'm in an apartment

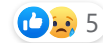
Like · Reply · 36w

3 Replies

**John Wrobel**

Well thanks for nothing it was nice knowing you.you probably lost more then half your viewers with way weaker antenna.thanks have a nice life.now that im a former viewer.good bye.

Like · Reply · 36w · Edited



Hide 23 Replies



Author

**WHNE Detroit**

Sorry John that you feel it's our fault. The channel 3 coverage area is larger than we had with UHF. We have viewers miles away from the station, but it requires having a home antenna capable of receiving "Low VHF" signal. We've been posting this infor... [See More](#)

Like · Reply · 36w

**Jack Marter**

WHNE has been very helpful. You shouldn't be so rude to them.

Like · Reply · 36w

**Shawn M. Colley**

WHNE wasn't the one that wanted to move.. the FCC told them they had to vacate UHF 20 for **Detroit Public Television**. VHF 3 is one of the last available frequencies...

Like · Reply · 36w

**Jan VanDerziel**

**WHNE Detroit** have one can't.get you 48187 But my question is , if you have been around a while why did I just start getting you a couple weeks before you went down?  
I scan often .

Like · Reply · 36w

**Matthew Thiesmeyer**

**Jan VanDerziel** I'm at 48188 and have gotten the fir almost 2 years though i only get them spotty since





**Jan VanDerziel**

**Matthew Thiesmeyer** thanks then maybe and out door antennas? I've had two different indoor amplified ant.

Like · Reply · 36w



Author

**WHNE Detroit**

**Jan VanDerziel** No idea, we were on Channel 14 for almost the last 6 years until we were forced to move due to the FCC repack.

Like · Reply · 36w



**Jan VanDerziel**

**WHNE Detroit** WoW I missed out, thanks 😊

Like · Reply · 36w



Author

**WHNE Detroit**

**John Wrobel** What part of town do you live in? I have been driving around checking our signal. Next time I am out I would like check near you place.

Like · Reply · 35w



**John Wrobel**

**WHNE Detroit** 696 an gratiot.no signal at all ever on 3.14 was fine.

Like · Reply · 35w



Author

**WHNE Detroit**

**John Wrobel** on my way

Like · Reply · 35w



**Matthew Thiesmeyer**

**Jan VanDerziel** i have a rooftop antennae

Like · Reply · 35w



**Jan VanDerziel**

**WHNE Detroit** Ford Rd and Haggerty

Like · Reply · 35w



Author

**WHNE Detroit**

**John Wrobel** I did a test in the parking lot of Sam's club. 13 mile and Gratiot. No problem receiving WHNE.

Like · Reply · 35w



**John Wrobel**

**WHNE Detroit** thats not where i live.







**John Wrobel**

**WHNE Detroit** no im a t 696 an gratiot.

Like · Reply · 35w



Author

**WHNE Detroit**

**Jan VanDerziel** Just did a test in the parking lot of Bob Evans.

No problem receiving WHNE.

Like · Reply · 35w



Author

**WHNE Detroit**

**John Wrobel** You told us that you were in Roseville, so we tested twice in Roseville and had no problem getting WHNE both times. The second test, we were a couple blocks south of where you are located at the church parking lot by Huron Park. No problem ... **See More**

Like · Reply · 35w



**John Wrobel**

**WHNE Detroit** thats funny cuz theyvlook at you like im stupid when you ask for that kind of antenna nobody has them?

Like · Reply · 35w



Author

**WHNE Detroit**

Was I to far north?

I also did a test at Huron Park. Is this closer to you? Again no problem receiving WHNE.

Like · Reply · 35w



**John Wrobel**

**WHNE Detroit** i just ran a scan an nothing.

Like · Reply · 35w



Author

**WHNE Detroit**

**John Wrobel** It doesn't matter how many times you try to rescan, you if you don't have an antenna capable of receiving Low VHF it will not work with your current antenna.

Like · Reply · 35w



**John Wrobel**

**WHNE Detroit** well then good bye whne.im not buyin an antenna when i get 51 channels on 4 tvs.an not 1 of them is your channel.thats really sad isnt it





Write a reply...



**Carol Embach**

Thank you so much for doing this antenna study! My husband loves your channel, and we need to get an antenna to continue viewing. Take care!

Like · Reply · 35w



Author

**WHNE Detroit**

Keep us informed on your progress with the new antenna Carol!

Like · Reply · 35w



Write a reply...



**Michael Bingle**

not a smart move on your end I have a very good antenna you need to go back to the FCC this is unacceptable people don't have the money to through around because you guys screwed up

Like · Reply · 36w



Hide 11 Replies



**Cora Wilson**

WHNE is a complete JOKE !

Like · Reply · 36w



**Michael Bingle**

Cora Wilson yes they are pitiful

Like · Reply · 36w



**Jack Marter**

Cora Wilson They are not, stop it, it's getting redundant.

Like · Reply · 36w



Author

**WHNE Detroit**

We will be posting a list of Low VHF antennas very soon. About 14 in all.

Like · Reply · 35w



**Michael Bingle**

Just a update I have a remedy for getting WHNE and it works great

Like · Reply · 34w





Author

**WHNE Detroit**

**Michael Bengle** Would you please send **Cora Wilson** a picture of your antenna.

Like · Reply · 33w



1

**Michael Bengle****WHNE Detroit** yes

Like · Reply · 33w

**Michael Bengle****Cora Wilson**

Like · Reply · 33w

**Michael Bengle**

Like · Reply · 33w

**Michael Bengle**

**Cora Wilson** here are before and after pictures to get WHNE two pieces of 53 inch Cooper tubing attached to your existing VHF antenna with clamps works great and a great signal



Like · Reply · 33w



20



1



2

**Michael Benge**

Hi is there a way you can get the green line going across the screen on news net channel 3-9 at the top of the screen it is very annoying

**Like · Reply · 33w**

Write a reply...

**Matthew Thiesmeyer**

As of 2 hours ago, your signal is clear and strong at 21 and Garfield

**Like · Reply · 36w****Craig Bielecki**

Solid Signal in Novi has an Extreme Signal HDB8X that works great, live near Flat Rock MI and did not receive WDNE until I installed the above mentioned antenna.

**Like · Reply · 35w****James Howard Carr**

THANK YOU 3.6 !!!

**Like · Reply · 36w**

Author

**WHNE Detroit**

We take it you are receiving us ok?

**Like · Reply · 36w****James Howard Carr**

Clear & strong signal ... I'm in Berkley ... one block from westborn market ...

**Like · Reply · 36w**

Author

**WHNE Detroit**

**James Howard Carr** Please share with everyone the type of antenna that you are using, brand and model # if possible.

**Like · Reply · 36w****James Howard Carr**

**WHNE Detroit**, I have 2 RCA antennas, both are square & flat, one large ANT1750Z & one small ANT1500E. BOTH antennas are within 4 feet of each other. The large one is a discontinued design BUT has been replaced with same size & distance of 60 mile range... **See More**

**Like · Reply · 36w**



**Jack Marter**

James Howard Carr You're lucky, you can use flat antennas near Oak Park. Otherwise, we need rabbit ears or outdoor. I get them indoors near SW Detroit.

**Like · Reply · 36w · Edited**



**James Howard Carr**

NOW that I have helped WHNE & its viewing audience ... BRING BACK DIYA TV, the Indian entertainment channel from SF !!! ... DIYA TV was enjoyable & ALWAYS HAD ad time filled ... GREAT MUSIC VIDEOS !!!

**Like · Reply · 36w**



Write a reply...



**Steve Lipple**

If I received it before on channel 14.1 will I still be able to receive?

**Like · Reply · 36w**



**Author**

**WHNE Detroit**

If you have an antenna that will receive "Low VHF" signal you should have no problem.

**Like · Reply · 36w**



**Christiane Paiz Traina**

Steve Lipple, I am the same, received all the Channel 14's now nothing. Will try again tomorrow. I will not buy another antenna.

**Like · Reply · 36w**



Write a reply...



**Mark Stockton**

So your signal goes way out capac but will not go 10 miles south?

**Like · Reply · 36w**



**Jack Marter**

Maybe you have the wrong antenna, for me it goes 11 miles south with indoor rabbit ears. (I don't work for WHNE)

**Like · Reply · 36w**



Write a reply...





David G. Pike

My antenna is a 1980s ordinary combination lo-hi-Vhf-uhf antenna, on a rotor, inside my attic. I haven't tried yet, working outside in this gorgeous weather, but I should be able to get it, since I don't live far away! Farmington Hills.

Like · Reply · 36w



Joe Magetlik

btw Im willing to buy a new antenna plz list models if possible anyone????

Like · Reply · 36w



Jack Marter

Buy two pairs of RCA rabbit ears, fully extend all the rods, detach the rods from one of the sets, then attach one to each of the rods of the intact antenna with tin foil and duct tape so that each rod measures 4... [See More](#)

Like · Reply · 36w



1



Joe Magetlik

Jack Marter thx will see if I can find any ....

Like · Reply · 36w



Author

WHNE Detroit

We will be posting a list of Low VHF antennas very soon. About 14 in all.

Like · Reply · 35w



1



Write a reply...



Shawn M. Colley

i'm in Windsor right across from Downtown Detroit and I can't get WHNE anymore... i fear i'll have to replace my rooftop antenna, since that's designed for channels 7-69...

When you guys were on UHF 20, you came in VERY well. i could aim my antenna a... [See More](#)

Like · Reply · 36w · Edited



2



Joe Magetlik

I think those of us in Windsor will need to get one of those Antop 400BV big boy antennas to receive WHNE again.It has low/high vhf and uhf.But theyre not cheap IF you can even find one....

Like · Reply · 36w





Shawn M. Colley

Wouldn't a Channel Master 5020 antenna do the trick? says it supports VHF Low, VHF High and UHF...

Like · Reply · 36w



1



Author

WHNE Detroit

Shawn M. Colley Yes! It says it accommodates a VHF bandwidth of 54-216. We start at 54 so you should be able to pick us up with that monster of an antenna

Like · Reply · 36w



Write a reply...



Jon David Wanner

It's simple, most homes have some sort of Wifi. Do the Roku App like others are starting too.



shutterstock.com • 1077493412

Like · Reply · 35w



1



Ronald Green

Nothing so far. The usual Detroit TV channels did not change at all although they were going to other channel but did not. 7 4 2 56 50 20 23 31-5 are all in the channel location. 14 is gone and somebody ought to petition the FCC about this loss. I would like to be able to catch White Fang Black Tooth and Soupy as if March 13 didn't change anything

Like · Reply · 36w



2



James Howard Carr

THANK YOU !!! UP in Berkley !!! Missed me some Soupy !!!

Like · Reply · 36w



Greg Donahoe

Good reception at 10/Ryan.



20

**Larry Banks**

Unwatchable here. Near Drake and 16 mile with 40" rabbit ears outside 2nd story balcony looking your way. Maybe try for RF29.

Like · Reply · 36w

**Mark Stockton**

There was someone from Southgate on here that I was going to give an antenna to but lost there info

Like · Reply · 32w

**James Howard Carr**

WHEN will 3.6 SHOW MOVIES ... ???

Like · Reply · 36w

**Greg Gdaniec**

Got you here in Livonia!

Like · Reply · 35w

**Cora Wilson**

I have a powerful rooftop antenna in Grosse Pointe Woods. Used to get 14 easily with a strong signal just like any other channel....Now NOTHING with 3 ! Please amp up your transmitter !

Like · Reply · 36w



3

Most Relevant is selected, so some replies may have been filtered out.

**Jack Marter**

They're already at the power limit

Like · Reply · 36w

Most Relevant is selected, so some replies may have been filtered out.



Write a reply...

**Sam Allen**

Not able to receive any longer in 48185. Using an RCA flat antenna that worked fine when programming was 14.X

Like · Reply · 36w



1

**Sam Allen**

Thanks but I will need to use an indoor antenna, do you have a recommendation ?

Like · Reply · 36w



Author

**WHNE Detroit**

**Sam Allen** we have an indoor antenna on order for testing.

It should be here in a few days.



20





Like · Reply · 35w



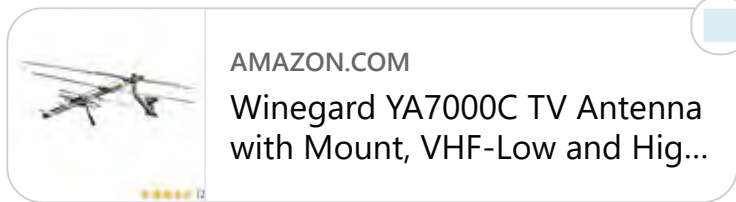
Author

**WHNE Detroit**

Flat antennas will no longer work to pick us up as they do not receive low VHF frequencies. You'll need something like this

[https://www.amazon.com/Winegard-YA7000C-Antenna-Mount-VHF-Low/dp/B07Y2MN2QX/ref=sr\\_1\\_3?dchild=1&keywords=low+vhf+antenna&qid=...](https://www.amazon.com/Winegard-YA7000C-Antenna-Mount-VHF-Low/dp/B07Y2MN2QX/ref=sr_1_3?dchild=1&keywords=low+vhf+antenna&qid=...)

See More



Like · Reply · 36w



Write a reply...



**Rick West**

WHNE, a lot of people may buy an antenna, but could you share some plans for how to built a ch3 folded dipole? If it can be made for a few dollars and put in an attic, that may be beneficial to some. Maybe a reflector on the back too and maybe 1 or 2 directors? Made with, perhaps, 3/8" soft refrigeration copper tubing? Easy to work, fastened to a 2x4?

Like · Reply · 36w · Edited



Author

**WHNE Detroit**

2 pieces of 3/8 copper tubing 53 inches long each. Drill a hole at end of each to connect a 300 to 75 ohm adapter. We tried this in Hamtramck and it pick up or station just fine.

Like · Reply · 36w



**Rick West**

This dipole is 300 ohms, without being folded?

Like · Reply · 36w



Author

**WHNE Detroit**

**Rick West** two 53 inch dipoles, extended out on either side

Like · Reply · 36w





**WHNE Detroit**

Attach a coax cable to the adapter and you have length to give you more position-ability with the home made antenna

**Like · Reply · 36w**



**Rick West**

**WHNE Detroit** I've done some antenna research before and if I remember correctly, a half wave dipole has an impedance of about 75 ohms. If I remember correctly, a folded dipole has a 300 ohm impedance. Is this not correct?

**Like · Reply · 36w**



**WHNE Detroit**

**Rick West** Yes 300 ohm for the folded dipole.

**Like · Reply · 36w**



**Rick West**

**WHNE Detroit** so how long should the folded dipole be, and what is the radius of the turn at each end?

**Like · Reply · 36w**



Write a reply...



**Rick West**

I'm in Lake Orion very near Oxford. I have an old Radio Shack V-185 in my attic. I hooked it back in using an old ch3 combiner (being a pack rat has advantages) and I get WHNE now.

**Like · Reply · 36w · Edited**



1



**Marty Taylor**

I'm North of Jackson have my antenna up about 60 ft it's a Winegard not sure if that's how it's spelled I can pick you up in the morning and by 10 I'm losing you it's just the conditions the higher you have an vhf or uhf antenna the better they work I ... **See More**

**Like · Reply · 35w**



1



**WHNE Detroit**

**Marty Taylor** you are over 50 miles away from WHNE. We are truly surprised that you get us at all. We are very impressed.

**Like · Reply · 35w**



2





**Marty Taylor**

I'm picking you guys up and it's raining out right now not the best but it there

Like · Reply · 35w



Write a reply...



**Ken Ascher**

After your channel move, I can't receive you from the west side of Ann Arbor. Is your transmitting antenna in the same location as before?

Like · Reply · 36w



Author

**WHNE Detroit**

**Ken Ascher** At over 30 miles away we are surprised that you could receive WHNE. Is your a low VHF antenna? Low VHF starts at 54MHz. WHNE channel 3 is at 63 MHz.

Like · Reply · 35w



**Ken Ascher**

**WHNE Detroit** I could receive all 12 channels about 90% of the time before the frequency change. I tested different window antennas from my second-floor condo. Although the specs on the antenna claim it is omnidirectional, if you change the orientation of the antenna by 10 degrees then rescan, the flat panel antennas can be oriented for best reception. These low-grade antennas have a built-in amplifier and range in price from \$30 to \$75. When I have time, I will see if I can receive WHNE by simply reorienting the flat panel antennas or using an amplifier and directional antenna designed for 54-512 MHz. I previously worked in engineering at TV 9/10 which was Fetzer Broadcasting WWTV and WWUP. In ham radio, I am WB8LIT.

Like · Reply · 35w



Write a reply...



**Cora Wilson**

Here's the deal.. As I said before, I have a high powered rooftop antenna, capable of receiving BOTH UHF & VHF signals. I currently get ALL Detroit & suburban stations....2, 4, 7, 15, 18, 20, 31, 38, 50, 56, 62...all at 95% signal strength !!!!!!! Why is that I cannot get Channel 3 at all....NOTHING ?????? The majority of the viewing area are ALSO getting NOTHING from Channel 3 !!!! PLEASE AMP UP YOUR TRANSMITTER !!! Thank You !!!

Like · Reply · 36w

**Joe Magetlik**

Cora, wait until WHNE suggests a diff antenna because they are now on 3 yes but its vhf low which means maybe a new antenna or add on for a lot of us. Keep here on FB to see what we need to get to receive them again.thx

Like · Reply · 36w

**Cora Wilson**

It's their end....not ours....sorry Joe.

Like · Reply · 36w

**Matthew Thiesmeyer**

you don't get 9? where are you Cora ?

Like · Reply · 36w

**Cora Wilson**

Matthew Thiesmeyer I only listed Detroit stations to make my point. Yes, I get the Windsor ones 9, 19, 26 as well.

Like · Reply · 36w · Edited

**Rick West**

None of those are on VHF Lo. I couldn't get it either until I combined in an old attic antenna that received VHF Lo. Now it comes in fine. Perhaps your high power setup receives VHF Hi and UHF only. I can't know. I have a nice high gain setup as we... **See More**

Like · Reply · 36w · Edited



Author

**WHNE Detroit**

**Cora Wilson** I am standing in the city of Wayne Community Center parking lot pick up WHNE Detroit very easily

Like · Reply · 36w





Author

**WHNE Detroit**

We have an antenna ordered it should arrive later this week.

When it arrives I will test it at this location

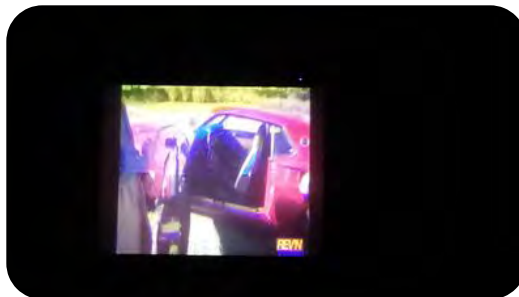
Like · Reply · 36w



Write a reply...

**Marty Taylor**

This is what I'm getting at 11:20 pm North of Jackson working good !!!



Like · Reply · 35w



Author

**WHNE Detroit****WOW**

1

Like · Reply · 35w



Write a reply...

**Cora Wilson**

I finally picked up Channel 3.....but it's WKYC in Cleveland !! Funny how my antenna can pick up all of Toledo & Cleveland channels, but NOTHING for WHNE in Detroit !!!!!

Like · Reply · 36w



Author

**WHNE Detroit**

**Cora Wilson** WKYC in the Cleveland Ohio area broadcasts on channel 19 which is uhf

Like · Reply · 36w



Write a reply...

**Joe Magetlik**

No go in Windsor, Im in the yellow portion tried 3 diff antennas and not even a whiff. If anyone here in the Windsor side is getting WHNE plz let me know what



20



**Sharon Hebert**

**Joe Magetlik** I'm in Windsor and channels scan in but nothing. If you figure it out please let me know.



Like · Reply · 36w

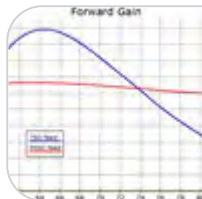


Write a reply...



**Bella T. Bichon**

Regarding the 300 ohm vs. 75 ohm transmission line question, the k6sti site has plans for a dipole for low VHF. It can be fed with either 300 ohm or 75 ohm transmission line. It actually works better on Channel 3 with 75 ohm line. The 300 ohm is better... **See More**



HAM-RADIO.COM

TV Antennas

Like · Reply · 35w · Edited

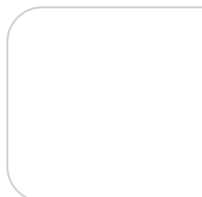
2 Replies



**Cora Wilson**

For those devoted Christians missing out on Jimmy Swaggart's wonderful preaching on the Son Life Network (Channel 3.5) due to this mess, you can watch the network LIVE for free.....AMEN & AMEN ...HAPPY PASSOVER EVERYONE !!!

<https://www.youtube.com/watch?v=5Tw5xhRsonc>



YOUTUBE.COM

Sonlife Broadcasting Network Live

Like · Reply · 36w · Edited



**Matthew Thiesmeyer**

Sadly, seems I lose you about 10 am every day and pick you up again late afternoon early evening. ant only reads about 39

Like · Reply · 36w



Author

**WHNE Detroit**

**Matthew Thiesmeyer** What part of town do you live?

Like · Reply · 35w





1



2



Like · Reply · 35w



**Matthew Thiesmeyer**

The signal varies as to weather as well as time of day. I cannot get you past 41 on ant strength

Like · Reply · 35w



**Matthew Thiesmeyer**

[https://smile.amazon.com/McD.../dp/B074CHS7CP/ref=sr\\_1\\_13...](https://smile.amazon.com/McD.../dp/B074CHS7CP/ref=sr_1_13...) I have this but older model, not sure number

PINNED POST



AMAZON.COM

McDuary Outdoor 150 Miles  
Digital Antenna 360 Degree...

Like · Reply · 35w



Author

**WHNE Detroit**

**Matthew Thiesmeyer** I copied this from the Amazon website

Working Frequency: VHF 170~230MHz, UHF 470~860MHz... **See More**

Like · Reply · 35w



1



Write a reply...



Write a comment...





1



2







1



2



OTHER POSTS







1



2





1



2





5



## WHNE Detroit

@WHNEDetroit · TV Channel

 Send Message

Home

Reviews

Videos

More



 Like



WHNE Detroit

April 2 · 

If you are using an antenna that is designed for Low VHF and it has a pre-amp or booster you need to remove the booster. While pre-amps and boosters work for High VHF and UHF they will only degrade the signal and increase the static on a Low VHF signal.



6

21 Comments

 Like

 Comment

 Share



Most Relevant 

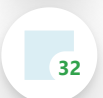
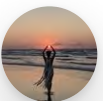


Write a comment...



Quentin P. Dandybrook

I removed my booster but, still not getting any of the channels that I once got perfectly. Like many people I suppose I'm just not financially solvent enough to invest



32



5



Like · Reply · 36w

**Craig Hanton**

Ok, I got a lock on your signal after playing around with my antenna rotor here in Groveland Twp. Signal meter is at 60%, which is a LOCK for other distant channels, but the picture is totally pixelated. Funny, the best signal comes in when my antenna is pointed directly opposite of where your tower is.

Like · Reply · 36w

**Rick West**

Are you still carrying the same channel lineup?

Like · Reply · 36w

2 Replies

**Len Scheuer**

but then i lose the high end. any solution to this?

Like · Reply · 36w



Author

**WHNE Detroit**

The only solution is to get a separate Low VHF Antenna and install it in addition to your other antenna

Like · Reply · 36w · Edited



Write a reply...

**Angie Guarino**

I still can't find your channel 🤔

Like · Reply · 36w

**Cora Wilson**

Neither can 98% of the viewing area.

Like · Reply · 36w

**Jack Marter**

**Cora Wilson** That sounds like an exaggeration

Like · Reply · 36w

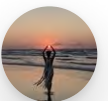
**Cora Wilson**

**Jack Marter** Nope....just the facts....

Like · Reply · 36w

**Jack Marter**

**Cora Wilson** Well if one doesn't intend to get the correct antenna, even in the future after the pandemic is over, they clearly don't want WHNE. They can't increase power as they're already at the



32



5



**Angie Guarino**  
What is the correct antenna?

Like · Reply · 36w



**Jack Marter**  
**Angie Guarino** Rabbit ears fully extended, and horizontal

Like · Reply · 36w



Write a reply...



**Rick West**  
Are you transmitting yet?

Like · Reply · 36w



Author

**WHNE Detroit**  
Yes, have been since yesterday

Like · Reply · 36w



**Rick West**  
Ok, not picking you up, so may need another antenna. I'm in Lake Orion and had no trouble with your ch14(20?) signal.

Like · Reply · 36w



**Rick West**  
I did rescan.

Like · Reply · 36w



Author

**WHNE Detroit**  
**Rick West** You need an antenna specifically designed for Low VHF, the bigger the better and outdoor with your distance from us.

Like · Reply · 36w



Write a reply...



**Dave Dion**  
So, take booster/amp out and get even fewer channels To enjoy? This is not an option. Sorry to say goodbye WHNE, but I have to in this case From Romeo.

Like · Reply · 36w



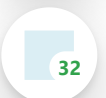
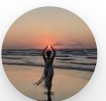
**Craig Hanton**  
Ditto....



Like · Reply · 36w



Write a reply...



32



## WHNE Detroit

@WHNEDetroit · TV Channel

Send Message

Home

Reviews

Videos

More

Like



### WHNE Detroit

April 15 ·

#### ANTENNA LIST FROM WHNE\*--

This antenna list has various antennas that we are suggesting for these different zones (on the map) for receiving Low VHF signal channel 3 from WHNE. We've checked the specifications on these antennas and the manufacturers claim them to be good for Low VHF (54 to 88MHz) and High VHF (174 to 216MHz) and UHF (470 to 608MHz). Check the specifications for which ever antenna you decide on, to make sure it will work for Low VHF.

If any of these antennas offer Low VHF extension Kits, be sure to purchase them with your antenna.

Please remember that the farther out you live from the WHNE tower site in Oak Park, it is better to have your antenna outside as high as possible. In some cases, it can be mounted in your attic.

Zone A (Within 4 miles of WHNE)

We have finished a little video on how to make a really low cost







out in our tests). This DIY-Homemade antenna video will be posted is now posted in another post on our FB page.

We didn't find any other antennas to suggest for close-in expect if you can find a set of "old" rabbit ears with sticks that go out 48 inches. (New rabbit ears antennas sticks are to short)

A viewer took two new ones and took off sticks on one and taped them to the other antenna, making one with long sticks. He's getting good signal with it. (The sticks need to be over 49 inches on each side to receive channel 3)

Zone B - (We can suggest that these antennas should be good for Zone B):

<https://winegard.com/.../platinum.../platinum-series-hd7000r>

(This is the one we tested all over the Metro with and had good pictures at all of the test locations that we listed)

Available online for around \$45

<https://winegard.com/.../cla.../classic-series-yagi-ya-7000c>

Available for around \$74 from Amazon

<https://www.solidsignal.com/pview.asp?p=ANT3037XR>

Available online for around \$70

Zone C - (We can suggest that this antenna should be good for Zone C):

[https://www.channelmaster.com/Digital\\_HDTV.../cm-3016.htm](https://www.channelmaster.com/Digital_HDTV.../cm-3016.htm)

Available online for around \$99

If you live farther out than Zone C we suggest one of these larger antennas:

<https://www.channelmaster.com/Masterpiece.../cm-5018.htm>

Available online for around \$180

<https://www.solidsignal.com/pview.asp?p=REFURB-HD-8200U>

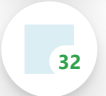
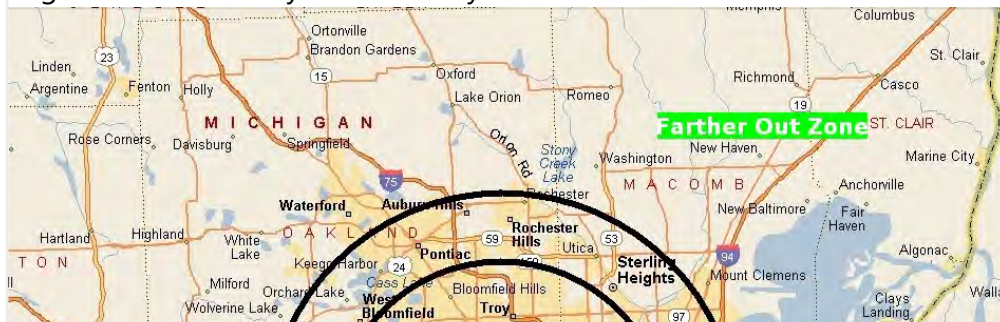
Available online for around \$130

<https://www.solidsignal.com/pview.asp?p=HD8200XL> Available online for around \$190

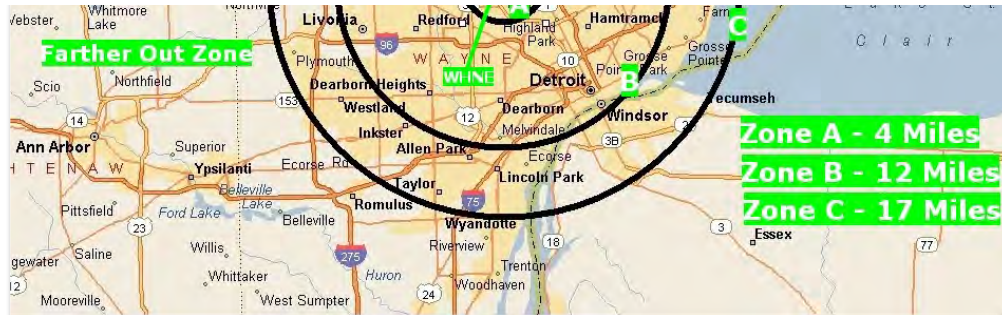
[https://www.channelmaster.com/Digital\\_HDTV.../cm-3020.htm](https://www.channelmaster.com/Digital_HDTV.../cm-3020.htm)

Available online for around \$180

\*We are only suggesting that these antennas will work, but we can not guarantee that they will work at your home. Be sure to have them



32



21

82 Comments 7 Shares

Like

Comment

Share



Most Relevant



Write a comment...



Author

**WHNE Detroit**  
Scott Sabo

Like · Reply · 33w



**Chad McLeish**

I don't live in this area but I can pick up VHF Low signal from 60 miles away with a Winegard 8200 and a pre-amp. It is big but its still cheaper than cable!

Like · Reply · 34w



1



**Michael Heck**

Okay, everyone here, what the OP has is a list of antennas that work, if you are buying a new one, customized to various distances. What you have right now should be fine especially if you have an outdoor log periodic or yagi (almost all rooftop antenna... [See More](#)

Like · Reply · 34w · Edited

5 Replies



**Kim Adams**

It's a shame my antenna doesn't pick up your station anymore from Macomb Twp....definitely wii not be buying a new antenna. These new digital antenna worked fine. This is not even close to your old signal strength...We were willing to put up with the... [See More](#)

Like · Reply · 34w · Edited



3

2 Replies



**Matthew Thiesmeyer**

Sadly, I will just have to continue getting you when I can.



32



Like · Reply · 34w

5 Replies



**Dan LaTour**

Not buying another antenna just to watch your rehash channels, when there are 70 other rehash channels out there in the area.

Like · Reply · 34w



**Len Scheuer**

i'm in 48050. really not that far. you're talking almost \$200 PLUS installation for a second antenna on my roof and it MIGHT work? i liked your station and several channels but most of that content IS available online for streaming if i really want. ... **See More**

Like · Reply · 34w



9 Replies



**Mark Michaels**

What a shame.

I'm in Wixom, which is on the outer edge of your ZONE C, which means I have no options to continue watching as I am in an apartment.

Based on the other comments, it seems you guys messed up enough to lose about half your audience. I can't... **See More**

Like · Reply · 34w

4 Replies



**Craig Hanton**

Very helpful, but it's buh-bye for me up in Groveland Twp, northern Oakland Co. no matter what antenna. 🙄

Like · Reply · 34w

4 Replies



**Jack Marter**

You guys are helpful! 🕶️

Like · Reply · 34w

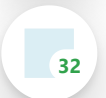
1 Reply



**Sean Raymond Ketelhut**

You use to have a great signal when you was on 14. You switched to 3 and now you're signal is useless and blows. Why should I buy a antenna when you was on 14 you're signal was great. Thanks for nothing!

Like · Reply · 34w



**Jack Marter**

Actually, zone A could go all the way out to Melvindale, 11 miles away. I get you guys indoors

Like · Reply · 34w

**Jamie Fach**

I use to get your channel most of the time up here in Corunna Ontario, but according to this signal map i dont have a hope in hell, no way this is even close to what your signal strength was. I wont be able to ever get u tuned in lol

Like · Reply · 34w

12 Replies

**Angie Guarino**

I had this channel before you did whatever you did 🙄🙄

Like · Reply · 34w

8 Replies

**Chris Boone**

Zone B and C and farther might also consider using a CM7777 or 7778 amp at the antenna...impulse noise at lowband DTV 2-6, coupled with the low ERP power levels the FCC put on lowband channels is a reception killer....amp sometimes increases such noise... [See More](#)

Like · Reply · 34w

**Doug Hendricks**

We had a Christian station in Lima, Ohio who switched their digital channel to 4. After they added something to their tower, more people were able to receive it again.

Like · Reply · 33w

**Sean Raymond Ketelhut**

You guys coming in clear right now what did you do?

Like · Reply · 33w

**Michael Bengle**

anyone running a outdoor antenna on the roof who has high vhf and not low here is a low cost solution to receive WHNE I live in Garden City I am 12 miles from the transmitter I took two 53 inch pieces of Cooper tubing and attached it to my existing vh... [See More](#)

Like · Reply · 33w

**Scott Biggs**

We are located at Nine Mile Road and I-94 in Saint Clair Shores. Our present outdoor antenna does not have low vhf capability (Anten model by 400 ) Which model or





Like · Reply · 15w

2 Replies



Sam Allen

48185 signing off, I have tried a few antennas new and old without success. Bad timing to ask viewers to purchase new antennas.

Like · Reply · 34w

6 Replies



David Rwalker

Your doing more for your viewers than any other broadcaster? This information is needed by consumers!

Like · Reply · 34w

1 Reply



Michael Heck

The Winegard antennas are really good and the price is excellent.

Like · Reply · 34w

## PINNED POST



WHNE Detroit

September 4 ·

WHNE is happy to announce the exciting new service here in Detroit! You can now watch all 12 WHNE channels without using an antenna!

Please SHARE this post with your family and friends!

Locast is a public service to Americans, providing local broadcast signals (like WHNE) over the Internet. All you have to do is sign up online and certify that you live in the Detroit TV market, then, you can select among all the local broadcasters and stream your favorite local station. ... [See More](#)







5



## WHNE Detroit

@WHNEDetroit · TV Channel

 Send Message



### WHNE Detroit

April 11 · 

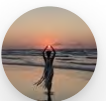
We ordered several different antennas from online sources. They all claimed to work for Low VHF. When they arrived, some of them actually had printed right on the box that they would not work for Low VHF. Others did not work either. They all were returned.

We learned to look at the manufacturers web sites and at the specs for their antennas. Antennas capable of receiving Low VHF must receive 54-216 MHz.

We will provide a list of suggested antennas shortly. We are in final stages of testing the last one before posting the list!

We tested this last week all over the Metro area. Our engineer traveled in his car. He would stop, pull the antenna out of the back seat and hold it by hand above his head. Watching a portable TV, he could see good clear pictures at all these locations listed below. Check out the list to see if he was near where you live.

Test Location List (as of 4/11/2020)



35



5



Gratiot Avenue & Masonic (Sam's Club) - Roseville  
16 Mile and Utica Road - Clinton Township  
16 Mile and Groesbeck Highway - Clinton Township  
16 Mile and Gratiot Avenue - Clinton Township  
Romeo Plank Road & Canal Road - Clinton Township  
Dequindre Road & 16 Mile/Metro Parkway - Sterling Heights  
Dequindre Road & E. Hamlin Road - Shelby Charter Township  
Adams Road & Tienken Road - Rochester Hills  
Woodward Avenue & Square Lake Road - Bloomfield Township  
Orchard Lake Road & 14 Mile - Farmington Hills  
10 Mile & Power Road - Farmington Hills  
9 Mile & Novi Road - Novi  
8 Mile & Haggerty Road (Meijers) - Northville

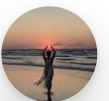
**WHNE Detroit**

Send Message

Like



Ford & Sheldon Road - Canton  
Ford Road & Haggerty (Bob Evans) - Canton  
Michigan Avenue & 275 - Canton  
Ecorse Road west of 275- Van Buren Charter Township  
Ecorse Road & Merriman Road- Romulus  
Eureka Road east of 275 (Cell Lot) - Romulus  
Eureka Road & Trenton Road - Southgate  
Fort Street & London Avenue (Memorial Park) - Lincoln Park  
Southfield Road & Dix Highway (Lincoln Park Shopping Center) - Lincoln Park  
Ford Road & Outer Drive (St Anselms Church) - Dearborn Heights  
Ford Road & Wyoming Avenue - Dearborn  
Michigan Avenue & 24th Street - Detroit  
Van Dyke Avenue & Nevada - Detroit



35



👍 😮 ❤️ 23

92 Comments 1 Share



Like



Comment



Share



Most Relevant



Write a comment...



Author

**WHNE Detroit**

Are you in Dearborn Heights?

Like · Reply · 35w



**Sean Raymond Ketelhut**

**WHNE Detroit** no Detroit Warren and cadieux

Like · Reply · 35w



**Mark Stockton**

Taylor just south of Van Born Road west of Pelham

Like · Reply · 35w



Author

**WHNE Detroit**

We did a test just east of you at the Lincoln Park shopping center and other tests farther out southwest of you with good reception. I can't tell exactly from the picture and looking it up, but I don't think that antenna is good for Low VHF. They need ... **See More**

Like · Reply · 35w



**Mark Stockton**

I get 2 4 7 11 13 15 18 19 20 24 31 32 36 38 50 56 62 and all the subs my antenna is GE 33685

Like · Reply · 35w



Author

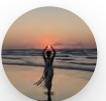
**WHNE Detroit**

All those stations are High VHF or UHF. That's what I said, your antenna is not good for Low VHF. Don't you get channel 9 from Windsor?

Like · Reply · 35w



**Sean Raymond Ketelhut**







5

**Mark Stockton****WHNE Detroit** I do get channel 9

Like · Reply · 35w

**Ronald Green****WHNE Detroit** Ron yes I am in Dearborn Hts. The 48127 Dearborn Hts. I am glad you are examining low VHF and have found they did not work except. for the cost to you and would have felt troubled. It is entertainment Which already costs heavily with DTE higher than believeable rates.

Like · Reply · 35w



Write a reply...



Author

**WHNE Detroit**

Attention apartment dwellers. We are waiting for an indoor antenna to be delivered that we will be testing ASAP.

Like · Reply · 35w · Edited

**Mat Smith**

Low VHF (2-6) digital broadcasts are particularly prone to interference and are often hard to receive reliably, regardless of what model of antenna is used ,from rabbitears.info

Like · Reply · 35w

**Rich Sheff**

Not entirely true. All radio signals are subject to reflections and interference. VHF signals have less propagation loss, due to atmospheric moisture.

Indoor antennas are almost always less effective than outdoor antennas. The indoor antennas have more interference sources near them, plus people moving around, that can block signals.

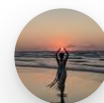
Like · Reply · 35w



Write a reply...

**Charles McCoy**

Hello, I'm in Bruce. I have an antenna with 150 mile range. The box it came in says it's VHF frequency is 40-300. I have rescanned many times and still am unable to bring in channel 3 WHNE. You stated you had a viewer in Capac, MI. which is farther out than me to, get your new





5



Like · Reply · 35w

**Kenyetta Davis**

I live near warren and Southfield fwy I can't get the channels to work unless I'm in my bed holding my antenna above my head I haven't been able to watch anything since the channels have been restored I really miss Get tv please help



Like · Reply · 35w

**Joe Mosolits**

Lookin forward to the final results. I am currently not able to receive WHNE. I am very close to the Memorial Park in Lincoln Park area. I miss the station!

Like · Reply · 35w

1 Reply

**Ed Chaczyk**

When you post the antennas that work in getting your station, will they also get ALL the other stations in Detroit? Low VHF through High UHF?

BTW, for the past few days has channel 3.6 been off the air? The other 3.x channels are okay. Also, any thought on getting "The Spy Smasher" serial?



Like · Reply · 35w

**Bob Walchli**

Good news. I have a Channel Master VHF and UHF CM-3018 with a mast-mounted CM-7778 preamp at roof level on a single-story home around 31 mile and Rochester Road. I'm getting WHNE again!



Like · Reply · 35w

5 Replies

**Mark Stockton**

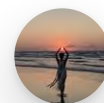
My problem is I have antenna 10 feet above my roof and get 88 channels including all toledo channels so if I switch to an antenna that would get whne then i would lose all channels to south so it's just will not work for me so i have to go with out whne when i used to get them. If you where online then I could get you thru smart tv.



Like · Reply · 35w

Hide 11 Replies

Most Relevant is selected, so some replies may have been filtered out.



35



5

**WHNE Detroit**

Mark, what brand and model antenna do you currently have at your home? What main cross streets are near you? We'd like to help you figure out why you can't receive us if you're getting that many all ready.

Like · Reply · 35w

**Mark Stockton**

GE pro outdoor made by Jasco I have two of them on my roof one to north one to south works great on every channel but yours. Pelham and Van Born



Like · Reply · 35w

**Mark Stockton**

Its not end of world not getting WHNE>

Like · Reply · 35w

**Rich Sheff**

The model number is not visible in that pic.

Like · Reply · 35w

**Mark Stockton**

**Rich Sheff** my Antenna is GE 33685 Walmart \$39 had them for 5 years

Like · Reply · 35w



1

**Rich Sheff**

That looks like a VHF high band & UHF antenna. Low band performance will be mediocre, at best.

Like · Reply · 35w



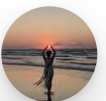
1

**Joe Magetlik**

Mark...use an A/B switch then u can use your current antenna and then a separate coax for the low vhf antenna for WHNE. A is current antenna push B then for WHNE



1



35



5

**Mark Stockton**

**Joe Magetlik** I was thinking of A/B switch but also thinking I would lose some of ohio station in signal loss. That's on my radar  
Thanks

**Like · Reply · 35w****Rich Sheff**

Where would you be losing signal? An A/B switch should only drop about 1/2 dB.

**Like · Reply · 34w****Rich Sheff**

What VF did you use for the tubing?

**Like · Reply · 33w** **Author****WHNE Detroit**

**Mark Stockton** I purchased the same antenna and modified it to work on low VHF. I bought a 10 foot roll of 1/4 copper tubing straightened it out the best that I could. Cut 2 pieces 53 inches long and stuck them in the longest elements of the antenna. I tested the modified antenna by holding it above my head and watching on a small portable TV. I was 10 miles away from WHNE's transmitter site and received a clear signal. Cost less than \$10

**Like · Reply · 33w · Edited**

Most Relevant is selected, so some replies may have been filtered out.



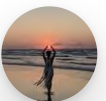
Write a reply...

**Larry Fuller**

Try Inkster Rd. and Michigan Ave. area in Inkster.

**Like · Reply · 35w** **Author****WHNE Detroit**

We tested Ecorse Road & Merriman Road- Romulus





5



Like · Reply · 35w · Edited



Write a reply...



**Sean Raymond Ketelhut**

Channel 14 worked great and now Channel 3 really sucks  
not clear at Mack and Cadieux

Like · Reply · 35w



3



Author

**WHNE Detroit**

What are you using for an antenna? Brand model  
number if you know.

Like · Reply · 35w



**Sean Raymond Ketelhut**

**WHNE Detroit** roof antenna on chimney  
sometimes you're channel next it's all static.

Like · Reply · 35w



**Rich Sheff**

I wonder two things about your antenna:

- 1) Does it have VHF Low elements?
- 2) Has the antenna been damaged, or corroded.

Like · Reply · 35w



**Sean Raymond Ketelhut**

**Rich Sheff** no

Like · Reply · 35w



Write a reply...



**Robert E Witzke**

How about testing Clinton River Rd near the Henry Ford  
II High School in Sterling Heights 48313? I live on  
Montroy Dr.

Like · Reply · 35w



1



Author

**WHNE Detroit**

We tested near you Gratiot Avenue & Masonic  
(Sam's Club) - Roseville

Like · Reply · 35w



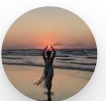
1



**Robert E Witzke**

**WHNE Detroit** Channel 3 still pixelates at times.

Like · Reply · 35w



35



5

**Robert E Witzke**

**WHNE Detroit** Gratiot Ave & Masonic is not that near me. I'm about 2 miles away from the town of Utica. I'm near M53 Expressway and Clinton River Rd in Sterling Heights 48313. Please test that area.

Like · Reply · 35w

**Anthony Cammarata**

Can't get this channel anymore as well also live in 48313 on Clinton River Road.

Like · Reply · 33w



Write a reply...

**Greg Gdaniec**

So glad you're back, Livonia sez hi & you were missed!

Like · Reply · 35w

**Jeff Lipchik**

I'm in Livonia too. I can't pick it up at all.

Like · Reply · 34w



Write a reply...

**Rich Sheff**

The antenna needs cover 60 MHz to 66 MHz, to receive channel 3.

TV VHF-Lo is 54 MHz to 88 MHz, channels 2 through 6.  
TV VHF-Hi is 174 MHz to 216 MHz, channels 7 through 13.

TV UHF starts at 470 MHz, and goes upto whatever is still in use, which is channel 14 and up.

Like · Reply · 35w

**Ed Chaczyk**

If VHF-Lo is channels 2-6, then if someone is receiving channels 2 and 4, shouldn't they be able to receive channel 3?

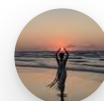
Like · Reply · 35w



Author

**WHNE Detroit**

**Ed Chaczyk** No that is not correct. WJBK/FOX channel 2 actually broadcasts on High VHF channel 7. WDIV/NBC channel 4 actually broadcasts on UHF channel 32. The 2 and 4 are their display/PSIP channels that stations use for viewers to tune in the stations... **See More**



35



Rich Sheff

Ed, that is the difference between the virtual channel, or PSIP, and the RF channel. For the antennas, you need to know the RF channels.

Edit: The page has changed, and does not show the RF channel any longer.

This page might be useful:

<https://www.fcc.gov/media/engineering/dtvmaps>



Like · Reply · 35w · Edited



Write a reply...



Dan LaTour

Still don't realize what you don't get. People already have antennas, they used to get your station regular. Now because your changing antennas and channels, you want us to buy another antenna, just for you? I get 53 channels from all over the area, not including you now. What makes you think I need an upgrade to view what you have to offer?

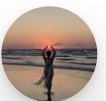
Like · Reply · 35w



Dan LaTour

I just rescanned, I got 58 here. None of them are this channel

Like · Reply · 35w







5



Author

**WHNE Detroit**

**Dan LaTour** As I just said to Cora above, we had no choice, go to channel 3 or go off the air. If you've re-scanned several times and don't get channel 3, it's likely you don't have an antenna that receives Low VHF (2 thru 6) signals. We have tested our signal all over the Metro (with a \$45 antenna) and found good signal in most places. I don't know about Flat Rock area. We didn't test that far south, though the FCC coverage area goes farther south from there. When you're that far from the tower, it's important to have an outside antenna pointed toward Oak Park. Most Detroit TV stations are near us, so it would help to receive them too. We hope that you feel our 12 program channels on WHNE are worth the one time cost of a new/different antenna to get them again. We'll have a list of antenna's here on Facebook as soon as we finish testing the antennas that we purchased.

Like · Reply · 35w



1

**Randy Michigan**

**WHNE Detroit** I'm looking forward to that list. Finding an antenna that specifies low vhf isn't easy!

Like · Reply · 35w

**Rich Sheff**

The stations being moved onto new RF channels was forced onto them, by the Congress. The decision was made to further reduce the available number of UHF channels, so those channels could be sold to cell phone companies.

Like · Reply · 35w



Author

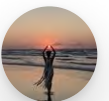
**WHNE Detroit**

**Cora Wilson** We are not laughing. We had no choice in the matter. Channel 3 or go off the air! We spent over \$150,000 building channel 3. There is good signal at your home, but YOU don't have an antenna capable of receiving channel 3. That's not our fault, it's just the way it is. You don't have to be so negative by posting comments like we are "a joke" on our Facebook page. If you don't feel the extra cost of buying a new antenna to receive WHNE, so be it, but continuing to make negative posts about us is unacceptable.

Like · Reply · 35w



1



35



5

**Dan LaTour**

**WHNE Detroit** it's unacceptable for you to tell us what to say, we all have opinions, including your station. You want us to except the fact that we have to change for you, but we didn't change, you did. And that makes you a joke, no matter what options you had to choose from. Your problems are your problems, not the rest of the City's, enjoy your smaller viewership, through no fault of ours. Jokes on you. Happy Easter.

Like · Reply · 35w · Edited



3



Author

**WHNE Detroit**

**Cora Wilson** That is only your opinion since you don't have an antenna that receives WHNE. Another FB poster that does have an antenna capable to receive us actually mentioned that they're now getting around 80 channels from their antenna. I hope you feel that WHNE is worth getting a new antenna to receive many more channels beside WHNE.

Like · Reply · 35w

**Cora Wilson**

WHNE is a joke...98% of the viewing area can't get it, but can get all other 50 channels in the area with no issues.

Like · Reply · 35w · Edited



3



Write a reply...

**Karl Eric Luther**

Any antennas work for apartment dwellers who cant use an outdoor antenna? My square one taped in my window worked fine on ch14! Nothing on ch3.

Like · Reply · 35w



1



Author

**WHNE Detroit**

Attention apartment dwellers. We are waiting for an indoor antenna to be delivered that we will be testing ASAP.

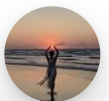
Like · Reply · 35w



1



Write a reply...

**Randy Michigan**

35



5

**Julie Phelps**

3 is not coming in in Livonia... 🤔

Like · Reply · 35w

**Jeff Lipchik**

Same here. I can't get it anymore since it left channel 14.

Like · Reply · 34w



Write a reply...

**Randy Michigan**

I'm getting impatient for that list! 🤔

Like · Reply · 34w

**Ron Wilbanks**

Are you actually transmitting on Ch-3 at this time at full power?

Like · Reply · 35w

**John Lawton****Ron Wilbanks** yes

Like · Reply · 35w



Author

**WHNE Detroit****Ron Wilbanks** WHNE has been granted by the FCC Special temporary Authority to broadcast at over twice the legal power.

Like · Reply · 35w



Write a reply...

**Jack Marter**

Is there a difference between circular polarization and elliptical polarization as far as signal strength/reliability goes?

Like · Reply · 35w · Edited

**Steve Pittiglio**

No love for St Clair County?

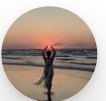
Like · Reply · 35w

5 Replies

**Angie D. Johnson**

I'm at 15 &amp; Ryan and still nothing

Like · Reply · 35w

**Arthur Desvarreux Larnetteur**

35



5

**Mark Stockton**

Give it more power like before

Like · Reply · 35w

**Mat Smith**

And what method is now being used ? Application  
 Purpose: Extension Request (Engineering) Antenna  
 Polarization: Circular Antenna Expiration Date:  
 04/16/2020 versus Antenna Polarization: Elliptical  
 Granted 04/08/2020

<https://www.fccdata.org/?>
[facid=&call=WHNE&cocode=1&city=&state=&country=US&zip=&arn=&party=&lmspf=&lmspl=&party\\_type=LICEN&latd=&lond=&lang=en](https://www.fccdata.org/?)


FCCDATA.ORG

FCCdata.org - powered by REC

Like · Reply · 35w

3 Replies

**Sean Raymond Ketelhut**

Will a rf signal booster help me get you're signal better

Like · Reply · 35w

**Rich Sheff**

Maybe. If it is one at the antenna, with power sent  
 up the coaxial cable. Here is an example, from  
 Channel Master.

[https://www.channelmaster.com/TV\\_Antenna.../cm-7778v3.htm](https://www.channelmaster.com/TV_Antenna.../cm-7778v3.htm)


CHANNELMASTER.COM

 Outdoor HDTV VHF/UHF  
 Antenna Preamplifier/Booster...

Like · Reply · 35w

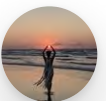


Write a reply...

**Lois Enot**


Van Dyke & 12 Mile (Warren) no signal .. receiving all the  
 other stations but not WHNE Detroit.


Like · Reply · 35w

**Rich Sheff**

35



 **Lois Enot**  
MaxEnergy Digital Indoor Antenna Full 1080P HD  
Like · Reply · 35w

 **Rich Sheff**  
This one? If so, it is a UHF antenna, so low band VHF performance is going to be extremely poor.  
<https://www.amazon.com/MaxEnergy-4330952921.../dp/B072BXTKNL>

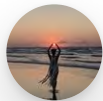


Like · Reply · 35w

 Write a reply...



PINNED POST





4



## WHNE Detroit

@WHNEDetroit · TV Channel

 Send Message



### WHNE Detroit

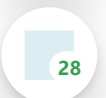
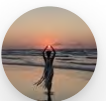
May 5 · 

ATTENTION WHNE VIEWERS: If you've had issues or problems in trying to receive WHNE since we changed from channel 14 to channel 3, we need to hear from you. Please send us your comments using this special email address: [WHNEInfo@gmail.com](mailto:WHNEInfo@gmail.com)

Take a few minutes to read the information below that explains why WHNE had to change channels.

Back in 2015 the Obama Administration, Congress and the Federal Communications Commission (FCC) decided to sell off spectrum (TV frequencies) to wireless companies. They created an auction to take channels 38 to 51 to sell and then to move/repack all the TV stations that were on those channels down between channels 2 thru 36, forcing every TV station in the U.S. to be packed into these few channels.

The Spectrum Auction took place and the Repack was to be completed across the country in 10 phases, so tower crews and equipment companies could spread the work out over the 39 months,







4



This is sort of confusing to explain, but after TV stations changed to digital many years ago, they could broadcast on one channel, but show up on your TV on they're old channel that you've watched them on for years. For example, WDIV/NBC has always been channel 4, but when they became digital, they were actually broadcasting on channel 45 with a display channel of 4. Now after the Repack on March 13th, they are now on channel 32, but you still use channel 4 on your TV to see them. What this all means is, when you rescaned your TV set on March 14th, it found all the TV stations on their new channels, but they still showed up on the same old display channel you've been seeing them on for years. You may not have realized that all the stations in Detroit had changed their actual broadcast channels, because their display channels remained the same!

In the case of WHNE, when we came on the air a few years ago on broadcast channel 20, the FCC told us we had to use "Display channel 14". For the Repack on March 13th we changed from display channel 14 (broadcast channel 20) to our new broadcast and display channel 3.

There is a big difference in TV channels (frequencies) used by TV stations because they are divided into 3 different frequency bands:

Channels 2 thru 6 are Low VHF (54 - 88 MHz)

Channels 7 thru 13 are High VHF (174 - 216 MHz)

Channels 14 thru 36 are UHF (470 - 608 MHz)

Each frequency band requires a DIFFERENT type of antenna to receive at your home!

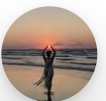
Back in the day, most people had big antennas on their roofs that worked on all 3 bands or they lived close to the TV stations towers and used Rabbit Ear antennas (which back then worked for all bands). After the TV stations changed to digital, there were very few "Low VHF" stations left, so antenna companies made newer antennas smaller to lower their cost. These newer antennas do not receive Low VHF.

When WHNE was Repacked to Low VHF, it was to get a coverage area similar to the old channel 14 coverage area. Today on channel 3 WHNE still covers a similar area, but since many of our viewers don't have antennas capable of receiving Low VHF, they're having issues seeing WHNE now. We've had many posts on our Facebook and email through our Web page asking what to do or complaining that you don't get us on your TV after rescanning many times.

We are going to ask you to take a few minutes to send us an EMAIL MESSAGE. We need to hear your issues and problems in trying to get WHNE since the repack to channel 3. Even if you've posted on Facebook or sent an email, we would like to hear from you again with an email message.

Good or bad we would like to hear from you! Please describe as best you can any and all of the issues you've had in getting WHNE on your TV since we changed to channel 3.

We've set up a special email address just for all these comments:







4

**WHNE Detroit**

TV Channel

[Learn More](#)

19

45 Comments 2 Shares



Like



Comment



Share



Most Relevant



Write a comment...

**Linn Hammill Balsley**

We are sad. as we can no longer receive WHNE Channels at all, even though we have scanned & re scanned many times. We have a very good 'big' antenna way up in the attic, and our home is up on a hill. We get all the other channels, and even get Lansing, Flint, Toledo, and Windsor, Ontario's CBC. Wish we could bring in your channels, but it looks like it won't work, unless you are going to get different equipment like a stronger transmitter? Wish that could happen.

Like · Reply · 31w



2



Author

**WHNE Detroit**

Please send us a detailed email so that we can log your comments WHNEInfo@gmail.com

Like · Reply · 31w



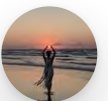
1



Write a reply...

**Andy Manor**

I sent an email. I think my issue is I have to use an indoor antenna, and I can't find an indoor antenna that picks up low vhf.



28



4

**Kim Kay**

Cannot get in romulus mi with antenna on top house.  
Used to get no problem

Like · Reply · 31w



1

1 Reply

**Sean Raymond Ketelhut**

I use to get you clear on 14 now that you're on 3 I get nothing or a bunch of mess on TV. And I live at Mack and Cadieux in Detroit.

Like · Reply · 31w



2



Author

**WHNE Detroit**

Please send us a detailed email so that we can log your comments WHNEInfo@gmail.com

Like · Reply · 31w



Write a reply...

**Roger Samuel**

I Like The WHNE Channel But I No Longer Can Get It In Inkster I Got A Couple Of Low VHF Antennas And None Of Them Work So I Took Them Back Im Done Moving On

Like · Reply · 30w · Edited

**Angie Guarino**

So with my indoor antenna I get channel 2 thru 64. Why can't I get channel 3?

Like · Reply · 32w



1

**Matt Powers**

**Angie Guarino** 2-64 broadcast on high vhf frequencies, whne channel broadcasts on a low frequency which your antenna is not designed to receive.

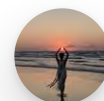
Like · Reply · 31w



Author

**WHNE Detroit**

WJBK/FOX channel 2 actually broadcasts on channel 7 (High VHF) but your TV let's you tune in their display channel 2. WDIV/NBC display channel 4 broadcasts on UHF channel 32. Most TV stations are not broadcasting on the actual channel that you tune your TV to see them. WHNE does broadcast and has a display channel 3, which is Low VHF. From what you mentioned, your antenna receives High VHF and UHF which gives you



28



4



Write a reply...

**Pamela Fuller**

I cannot pickup this channel I live in Wayne border Romulus

Like · Reply · 31w

**Michael Benge**

I had too add a quick fix to my antenna

Like · Reply · 32w

2 Replies

**Greg Gdaniec**

The signal now is very weak, and what does come through Isn't really watchable 😞😞 Wayne & Ann Arbor Tr, Livonia

Like · Reply · 31w

**David Rwalker**

I put up a different antenna, The tv picks up your signal from scanning but no pic or sound,will raising it help?

Like · Reply · 32w

**Matt Powers**

David Rwalker higher is always better for reception. Your tuner might be detecting the signal but the reception might not be strong enough for the tuner to decode it.

Like · Reply · 32w · Edited

**David Rwalker**

**Matt Powers** thanks I need your programming!

Like · Reply · 32w



Write a reply...

**Rick West**

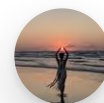
Are you going to use these emails to petition the FCC for more power?

Like · Reply · 31w

**Jan VanDerziel**

You said you came out and surveyed Canton when I said I could not longer receive WHNE . I'm in a upper unit condo. So I bought a small amplified outdoor ant to put in the attic. I Sill can't receive your station . It came in perfect before

Like · Reply · 31w





4



Author

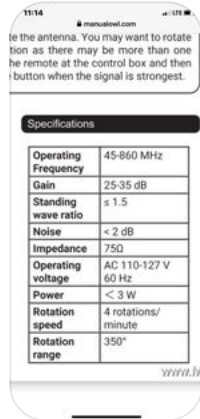
**WHNE Detroit**

Do the specs of the antenna say that it receives the Low VHF frequencies? If it does not then the antenna will do you no good.

Like · Reply · 31w



**Jan VanDerziel**  
**WHNE Detroit**



Like · Reply · 31w

**Jan VanDerziel**

Like · Reply · 31w



Author

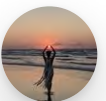
**WHNE Detroit**

These specs tell us nothing, you need to find out the frequency range that this antenna receives.

Like · Reply · 31w



**Jan VanDerziel**  
**WHNE Detroit** they don't list anything else on their web page. Wouldn't you think the fcc would require manufacturers to follow specifications for UHF and VHF bands. Have they come up with new ones since 1080p TVs. Back when I study for second class license they were specific.



28



4



Author

**WHNE Detroit**

**Jan VanDerziel** What is the model #? We'll see what we can find.

Like · Reply · 31w

**Jan VanDerziel**

**WHNE Detroit** MG-ant-104 . Channel 2 comes in with rabbit ears. I'm fine with it not working , but you guys asked the question and I like your station. I though it would be worth a try. But I didn't gain anything with the new antenna.

Like · Reply · 31w



Author

**WHNE Detroit**

it looks like the operating frequency is correct. It sounds like the antenna isn't powerful enough when installed in your attic. It would have to be installed outside as high as possible and pointed at Oak Park. Just to be clear, according to the ... **See More**

Like · Reply · 30w · Edited

**Jan VanDerziel**

**WHNE Detroit** thought I would let you know that there are times when I get it now! Just don't know what times lol 😂

Like · Reply · 28w

**WHNE Detroit**

Send Message

Like

**Eunice Twork**

My friend who lives in Madison Heights & myself in Royal Oak cannot get channel 3, anymore. Even when we scan the channels.

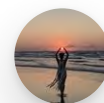
Like · Reply · 28w · Edited

**Linn Hammill Balsley**

Still cannot get WHNE since you changed to channel 3. We used to enjoy all your channels when on 14. - 14.1 thru 14.9

We have tried everything. Sadly, we have given up. It was nice knowing ya. 🙄 Can't you get a stronger transmitter?

Like · Reply · 30w · Edited





4

**Matt Powers**

Linn Hammill Balsley we are broadcasting at double our FCC power limit. It's not a matter of our power output. Even if we increased our power times 10 unless you have an antenna that can receive Low VHF you won't be able to pick up our signal.

**Like · Reply · 30w · Edited****Curon Aaron Denha**

Linn Hammill Balsley call (248) 284-4184 maybe we can help. We are WHNE Detroit Deaf Church TV

**Like · Reply · 27w**

Write a reply...

**Greg Gdaniec**

As of right now, I'm not getting any of the channel 3 line up!! 😞😞

**Like · Reply · 31w****Ronald Green**

Ch 2 1-5 Ch 4 1-4 if are low VHF are on my TV with indoor antennas. Ch. 3 has not come in since WHNE said it is on Ch 3. I don't know if you still carry Swaggert on SBN or Soupy Sales on Sat. on Retro TV. The news on old 14 was ok at times. But I have ... **See More**

**Like · Reply · 31w****Matt Powers**

Ronald Green Channel 2 broadcasts on 7 which is high VHF

**Like · Reply · 31w****Rick West**

And ch4 broadcasts on UHF.

**Like · Reply · 28w**

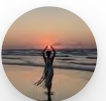
Write a reply...

**Scott Sabo**

I just ordered a new Wineguard HD8200U. Going to be 30 feet up. Hopefully this does the trick. Right now I can't get you all of the time. (Waterford)

**Like · Reply · 29w · Edited** **1 Reply****Sharon Hebert**

Email sent. Hope to have you back soon.





Bob Naismith &lt;whneinfo@gmail.com&gt;

---

**channel 3**

1 message

**GARY PAWLOWSKI**

Tue, May 5, 2020 at 10:21 AM

Reply-To: GARY PAWLOWSKI

To: whneinfo@gmail.com

*I still cannot receive your station in S/W Detroit, Livernois & John Kronk. I have 3 antennas on a pole and no help. I get channel 11 from Toledo with no problems but I lost channel 38 from Mt. Clemens but I have better reception from Toledo.*





Bob Naismith &lt;whneinfo@gmail.com&gt;

---

**(no subject)**

1 message

---

**Sharon Hebert**

To: WHNEInfo@gmail.com

Tue, May 5, 2020 at 10:28 AM

We used to get all the channel 14's perfect but sadly since the switch we get nothing. The 3's scanned in but got nothing but blue screen. Our antenna is outdoor (I have enclosed the link to type we have) mounted on chimney. We live in Windsor about 3 miles from river.

Thanks

Sharon Hebert

[https://www.amazon.com/Digital-Antenna-Degree-Rotation-Wireless/dp/B07TVNK79J/ref=sr\\_1\\_12?dchild=1&keywords=outdoor+t+antenna&qid=1588688644&sr=8-12](https://www.amazon.com/Digital-Antenna-Degree-Rotation-Wireless/dp/B07TVNK79J/ref=sr_1_12?dchild=1&keywords=outdoor+t+antenna&qid=1588688644&sr=8-12)



Bob Naismith &lt;whneinfo@gmail.com&gt;

---

**Reception**1 message

---

**alfred bolin**  
To: whneinfo@gmail.com

Tue, May 5, 2020 at 10:30 AM

I have not been able to receive you since the switch I live in pontiac.I received you good before.I have a clearstream antenna that looks like double 8s.I paid almost \$200 for.I am not replacing.I miss your shows especially "naked city"but i am learning to do without.I still hope you get straighten out tho.best of luck.



Bob Naismith <whneinfo@gmail.com>

---

## WHNE got a bad deal on Channel Reassignment

1 message

---

**David Dion**  
To: whneinfo@gmail.com

Tue, May 5, 2020 at 11:16 AM

WHNE in Detroit was pretty much screwed when they were forced to convert to Low VHF with the Obama administration FCC. I live in Bruce Township Michigan and no longer receive and will not pay any more money to get an antenna to receive as I spent quite a bit on revamping my antennas back in 2018/2019. It's too bad a small business station was left out in the cold much like other businesses from the administration regulations back in the day. Sorry to see WHNE gone from our home here in Northern Macomb County.

David Dion  
77830 Deerfield Dr.  
Romeo, MI, 48065

Sent from my iPad



Bob Naismith &lt;whneinfo@gmail.com&gt;

---

**info request for future**

1 message

**dads fix**

Tue, May 5, 2020 at 1:00 PM

To: "WHNEInfo@gmail.com" &lt;WHNEInfo@gmail.com&gt;

I am very familiar with the repack and how it has effected the Detroit and Windsor Ontario market . For your former Windsor market you have lost most all viewers. VHF low has many know issues . As you moved to this location the FIRST in the area for broadcasters it means for the viewing a specialized yagi antenna to have a chance to pick up your broadcast . Also a yagi style in more directional limiting what towers can be received via line of sight . As there is current other Detroit ,Windsor and Ohio broadcasting most will keep what they have and continue without being able to receive your broadcast. Unfortunately your major dedicated channels such as GetTV,LightTV and REVN will see less viewers that will effect revenue dollars and possible a move to a more preferred broadcaster that is easily picked up by local viewers .It seems the greed of higher power execs towards Cell Phone providers has had a major effect on OTA ,but the public takes the brunt do to less choices for viewing . The NextgenTV may mean even more consolidated options down the road .

Sorry to see this but any other RF frequency out of the VHF low band is the only way you have a chance for long term success

regards  
Dan



Bob Naismith <whneinfo@gmail.com>

---

## Channel 3 reception

1 message

---

To: Whneinfo@gmail.com

Tue, May 5, 2020 at 1:35 PM

Good day. Since you switch to channel 3 I've tried five different antennas and not being able to go and get you in. One antenna had a fuzzy going in and out. I have tried different locations of the attic antennas. I live in zip code 48111. 275 and Ecorse Road, One Mile West of there. I really miss REVN.

Thanks,  
Doug Dillingham



Bob Naismith <whneinfo@gmail.com>

---

## Channel 3

1 message

---

**Mary Farley**

To: whneinfo@gmail.com

Tue, May 5, 2020 at 1:56 PM

Yes, I have lost, your programming. I scanned, 2 tvs and only got, a scrambled picture, with no sound & it says, no program information. One tv has a big antenna on the house & the other one has rabbit ears. Live in Sterling hts, 16 mile and Van Dyke area. I hope, something can be done, love Light Tv and miss it very much!

Mary



Bob Naismith <whneinfo@gmail.com>

---

**48173**

1 message

---

**Angie Dudek**  
To: whneinfo@gmail.com

Tue, May 5, 2020 at 2:14 PM

Just following up with your FB post. We used to get your channel, we dont since the upgrade. I may have to buy another antenna!

Sent from my iPhone



Bob Naismith <[whneinfo@gmail.com](mailto:whneinfo@gmail.com)>

---

**Recent difficulties in receiving WHNE**

1 message

---

**Roger Reini**  
To: [WHNEInfo@gmail.com](mailto:WHNEInfo@gmail.com)

Tue, May 5, 2020 at 4:54 PM

For about five days now — since May began, in fact — I have not been able to acceptably receive WHNE on RF channel 3. Before,, I was able to use a pair of rabbit ears to receive you, and the signal was steady with few if any dropouts. But since May 1, the picture has been full of breakups and stutters; more often than not, the TV gives up and says “weak signal”. I cannot find an acceptable position for the antenna. The only one that seems to work for a short period has me standing very close to the rabbit ears. That is not an acceptable viewing position.

I cannot lift the rabbit ears any higher (they are on the second floor now). Since I live in a condo, I cannot erect an outdoor antenna. I would like to find a solution and will keep trying. Perhaps the new spring leaves are hindering reception.

Roger Reini  
[36640 Deerhurst S.](#)  
[Westland, MI 48185](#)



Bob Naismith <whneinfo@gmail.com>

---

**Can't receive WHNE anymore. :(**

1 message

---

Linn B

To: WHNEInfo@gmail.com

Tue, May 5, 2020 at 6:17 PM

Dear WHNE, just a note to tell you that we can no longer receive your channels since your change over to Channel 3. :( We have scanned & re scanned, and we have a very good antenna, & we get all the other channels available in the Detroit area, & the CBC in Canada too.

Just wanted to let you know. We miss your channels. Hope that someday you will get a bigger transmitter. Please let us know if you ever get this problem corrected.

Sincerely,

Linn B. & Family





Bob Naismith &lt;whneinfo@gmail.com&gt;

---

**Channels 3.1-3.12**1 message

---

**Florence Fuller**

To: whneinfo@gmail.com

Tue, May 5, 2020 at 6:56 PM

When you did broadcast on the 14s we received all the channels every day. Since you moved to the 3s it's not a great experience. Sometimes it works fine and we get all the channels daily.

The past few weeks the channels barely come in. Sometimes early in the morning and late at night we get reception.

Really sad because we watched programs on many of the channels daily. Really liked 3.6 and 3.7.

Hopefully this will change sometime soon. Especially with the stay at home situation we really miss the channels. You have an awesome schedule that we looked forward to viewing.

Sad in Capac.



Bob Naismith <whneinfo@gmail.com>

---

## Channel 3 reception

1 message

---

Igor N. Hue

Tue, May 5, 2020 at 7:15 PM

To: "WHNEinfo@gmail.com" <WHNEinfo@gmail.com>

I live in an apartment in Shelby Twp. I have a square antenna taped to my window. I did get all the whne channels on channel 14. Now I get no signal on channel 3 despite many attempts to scan channel 3.

Get [Outlook for Android](#)



Bob Naismith &lt;whneinfo@gmail.com&gt;

---

**Reception issues**

1 message

---

**Andy Manor**

Wed, May 6, 2020 at 12:30 PM

To: "whneinfo@gmail.com" &lt;whneinfo@gmail.com&gt;

Back in January I decided to cut cable and I got a good indoor/outdoor antenna. When WHNE was on channel 14, RF 20 I got a decent signal at Martin and Gratiot. However my antenna was only designed for high VHF, and not low VHF for when the repack happened. I do not have access to the roof to place an outdoor antenna with low VHF elements and I have my indoor antenna on a window facing the bulk of the transmitters in Southfield and Oak Park. Now I plan on moving soon and if I can I'll get an outdoor antenna for low vhf, but until then I won't be able to pick up WHNE.



Bob Naismith <whneinfo@gmail.com>

---

## Pixelation Now And Then

1 message

---

**ROBERT WITZKE**

Wed, May 6, 2020 at 9:11 PM

Reply-To: ROBERT WITZKE

To: "whneinfo@gmail.com" <WHNEInfo@gmail.com>

WHNE,

I live in Sterling Heights, Michigan 48313 off of Clinton River Road near the Henry Ford II High School by the M-53 Freeway.

I get pixelation now and then.

I have written several times on Facebook on this.

All of my antennas are above the roof top about 5-6'

One antenna is Antop AT-400BV "Big Boy" Low VHF, High VHF, UHF.

The other antenna is Antop AT-406BV "Mini Big Boy" Low VHF, High VHF, UHF.

Pixelation from both antennas every now and then.

Want to let you know the situation.

Thank You,

Robert E Witzke

41930 Montroy Dr

Sterling Heights, Michigan 48313-2591



Bob Naismith &lt;whneinfo@gmail.com&gt;

---

**switch to channel 3**

1 message

**winnie the pooh**

Thu, May 7, 2020 at 10:13 AM

To: "WHNEInfo@gmail.com" &lt;WHNEInfo@gmail.com&gt;

To whomever this concerns,

Since WHNE made the switch to channel 3, we are no longer able to view programming. We are located in Windsor, ON. Before the switch, we received the channel well 95% of the time, having problems only when it rained.

To the powers that be, please rectify this situation. I have a rooftop antenna and do not have the ability to re-position a new antenna in order to get the station.

This household enjoyed WHNE programming. We do not have cable and rely strictly on over-the-air signals. So many of our favorite shows are on your station. Older shows that can be found nowhere else. We would like to be able to view them again, but will not be purchasing a new antenna in order to do so. If you can fix it so that your channel returns to the air like it was before, we will most definitely watch you again. We will be waiting patiently.

Thank you.





Bob Naismith &lt;whneinfo@gmail.com&gt;

---

**Issues with channel**

1 message

**William House**

To: whneinfo@gmail.com

Fri, May 8, 2020 at 7:47 PM

Igate your channel very clear when the weather is good. But wind and inclement weather I get no signals on any of your channels. It is like you turned off your transmitter. I would have thought I would have got pixelation at a minimum, but I get nothing.

I am at 17 mile and Van Dyke area in STERLING Heights.



20200508\_193714.jpg  
790K



Bob Naismith &lt;whneinfo@gmail.com&gt;

---

**Change to Channel 3**

1 message

**Thomas Jablonowski**

Fri, May 8, 2020 at 9:11 PM

To: "WHNEInfo@gmail.com" &lt;WHNEInfo@gmail.com&gt;

Only about 15 miles from the transmitter site in Sterling Heights and normally do not pick up the signal on ch 3 now. When I am able to receive it is all pixelated and sound is breaking up. The move to 60mhz and the drop in power output really killed your viewing area.

Currently using an Antennas Direct clearstream 2v antenna mounted 21feet above ground, which gets me about 60 channels now. Prior the repack was up around 70 channels. Have a Wineguard ya7000c waiting to be mounted once it gets warmer so hopefully will be able to pick you up again..

Hopefully you signal will not get washed out when the sporadic E skip kicks in this summer. Remember back in the analog days picking up Florida stations sometimes on the vhf-lo channels..



Bob Naismith <whneinfo@gmail.com>

---

## Unable to receive your broadcast

1 message

---

**larry warmuskerken**

Fri, May 8, 2020 at 10:11 PM

To: "WHNEInfo@gmail.com" <WHNEInfo@gmail.com>

I live in the City of Warren, I used to receive your broadcasts on channel 14.1 thru 14.12, since the change over I do not receive any of your broadcasts after several attempts to scan or rescan. I really miss the programming you delivered. Light, Retro and Drive-in, in particular were very good channels.

Lawrence Warmuskerken



Bob Naismith <whneinfo@gmail.com>

---

## Missing RetroTV, Drive-in TV, andSBN

1 message

---

**Marjorie Hotchkiss**

To: WHNEInfo@gmail.com

Thu, May 14, 2020 at 5:01 PM

Cannot receive your stations and miss them VERY MUCH!!!!!! I live near Partridge Creek Mall. This is the 21st century, things should get better and not worse! I live in an apartment so this is hopeless. I have several indoor antennas and receive 50 stations. Yours (above three) were my favorites. I love old movies from the 1930's and 1940's. They are the best! On SBN, Frances and Friends is a very informative talk show. I miss it very much. Can anything be done?



Bob Naismith &lt;whneinfo@gmail.com&gt;

**Antennas**

1 message

To: "whneinfo@gmail.com" &lt;whneinfo@gmail.com&gt;

Sat, May 16, 2020 at 5:11 PM

Dear WHNE:

You wanted to hear from those of us who have lost your signal since you changed to channel 3. Well here goes- When you were on channel 14, I got your signal on an upstairs TV, (it was ok, I had to get my indoor antenna just right to get it, but it worked.

I live at 17 and 1/2 mile and Hayes rd in Sterling Heights, so according to your map, I'm 17 miles away from your tower. So I guess I was pretty lucky to get it at all, considering.

So I purchased a new indoor antenna (Antop with an amplifier that plugs in and it has rabbit ears.) This is the 3rd antenna I've had to get since digital TV came into play and I really cannot afford to get an outdoor antenna. Well you guessed it, I STILL CANNOT GET YOUR STATIONS!!! No channel 3 at all .I scanned my tv and still no channel 3. I sure do miss Light Tv and my favorite program Heartland.

PLEASE MAKE YOUR SIGNAL REACH US AGAIN!! I'm sure I'm not the only one who's missing all the good programming you have to offer I'm really disappointed I can't get this antenna to work, even though I knew I was taking a chance buying it.

PLEASE HELP US GET YOUR TV PROGRAMS AGAIN. WE'RE MISSING YOUR STATIONS TREMENDOUSLY. ESPECIALLY SINCE WE ALL HAVE TO STAY AT HOME SO MUCH!!!

Sincerely,

Karen 🙏🙏🙏



Bob Naismith &lt;whneinfo@gmail.com&gt;

---

**WHNE Issues**1 message

---

~

Sun, May 10, 2020 at 4:05 AM

To: WHNEInfo@gmail.com

Hello,

I have not been able to pick up WHNE since it moved to RF3. I am in Ontario, near the edge of the WHNE coverage map. The antenna I use is an outdoor antenna. I don't know exactly what antenna model it is, but I believe it has been there since the 1980s, when WJBK (RF2) and WDIV (RF4) were on low VHF, so it likely can receive low VHF.

When WHNE was on RF20, I could have the antenna pointed toward Toledo, and the signal strength was still 4/10 bars.

I am able to pick up WLMB in Toledo, a few times per year. They are on RF5, so I know I can receive low VHF channels.

I never knew WGGN moved to RF3, until I saw it posted on the WHNE Facebook page. The coverage map for WGGN shows it reaches across Lake Erie, so I wonder if it could be causing interference, making it harder to receive either channel on RF3. I know that both WUDT and WNWO have been on RF23 since the end of 2018. I have not been able to receive either of them after WNWO moved from RF49 to RF23, since their coverage maps overlap. Low VHF seems to be prone to interference, so it could be the same problem with WHNE and WGGN being too close.

Thanks.



Bob Naismith <whneinfo@gmail.com>

---

## Unable to Recieve WHNE

1 message

Tue, May 19, 2020 at 1:06 PM

Reply-To:

To: "WHNEInfo@gmail.com" <WHNEInfo@gmail.com>

Hello,

I saw your post on Facebook and wanted to let you know that I have tried several different indoor antennas and have had no luck picking up WHNE since the move to Channel 3 from 14. I've been using the RCA and Winegard flat antennas with 60 mile radius for several years and had no trouble getting WHNE until the move. I live in Warren (Common and Lorraine) in an apartment building.

A friend of mine, who lives in Clawson (14 and Campbell area) has better luck than I do, but still has trouble receiving your stations. He uses the same kind of indoor antennas that I do.

Please let me know if you have ny suggestions.

Thank you,  
Brian Varkula





Bob Naismith &lt;whneinfo@gmail.com&gt;

---

**Channel 3 switch-antennas**

1 message

**krncIn2**

Tue, Jun 9, 2020 at 3:37 PM

To: "whneinfo@gmail.com" &lt;whneinfo@gmail.com&gt;

Hello WHNE:

This is an update of my last email awhile ago regarding repack problems. I stated that I live in the 17 1/2 mile road and Hayes area in Sterling Heights and that after purchasing a new Antop antenna (with rabbit ears) and after rescanning my Tv, I still cannot get Light Tv or any of the other channel 3's since you moved from channel 14.

Since then I purchased a Channelmaster LTE filter hoping to maybe get lucky and finally be able to get Light Tv with it, ( I do have a cell tower not far from me which I thought might be causing some interference.) But alas, still no channel 3 here- I've even done the old aluminum foil trick and everything I can think of but to no avail.

The funny thing is, you said on Facebook that channel 3 was to get SIMILER COVERAGE TO CHANNEL 14. But it's not similer because I GOT CHANNEL 14 WITH A CHEAP FLAT HOMEWORX ANTENNA WITHOUT RABBIT EARS!!!

The irony of all this is besides PBS ( I do get that) Light Tv was really the only channel I regularly watched Get tv and the Retro channel, too. All the other stuff on Tv is just garbage and an insult to my intelligence. It's left a real void in TV land for me. Roma Downey said it best about Light TV- " There really is something good on!" At least on Light there is. Hope you can help us all get your station back again. I miss Heartland!!!

Sincerely, Karen 🙏



Bob Naismith <whneinfo@gmail.com>

---

## No reception

1 message

---

**Robert Monte**

To: whneinfo@gmail.com

Fri, Jun 12, 2020 at 11:40 AM

I live in New Baltimore, MI, 48047.

I used to get your station (Chan 14) OTA with my Antop outdoor antenna before you went to low frequency VHF.

I'm looking for a new outdoor antenna to receive your channels.

I came across the Lava HD2605 which states it has VHF frequency 40 - 300 MHz, 28-32 dB.

Do you think this will work?

Thanks,

Robert



Bob Naismith &lt;whneinfo@gmail.com&gt;

---

**Antenna options?**

1 message

**Mark Michaels**

To: whneinfo@gmail.com

Sun, Jul 5, 2020 at 9:06 PM

Hello,

I live in an apartment, in Wixom, my ONLY option is indoor antenna. I have searched and searched (very difficult during lockdowns). I have been unable to find any indoor antenna that gets low VHF signal at all. Is there one suggested? Every model in stores either doesn't list what signals they receive (they all promote how many miles, not transmission wavelengths), or those that list wavelength only show HIGH VHF and UHF.

I tried a few that didn't list anything, with no success in any room. As someone who loved the stations.... its frustrating.

Mark



Bob Naismith &lt;whneinfo@gmail.com&gt;

---

**Issues with your signal**

1 message

**William House**

Sat, Jul 25, 2020 at 1:20 PM

To: whneinfo@gmail.com, whnetv@gmail.com

I am still having issues with your channel. It is either very clear , all stations , or I don't get the station at all. Generally during inclement weather I don't get your signal at all and sometimes it comes up missing. I attached an earlier email with a picture of my antenna. What I don't understand is the all or nothing signal. Do you lower your power ? You would think I would get pixelations some of the time if it was my antenna . Any info would be appreciated in understanding this situation.

William House

[Preview attachment 20200508\\_193714.jpg](#)[20200508\\_193714.jpg](#)  
790 KB

----- Forwarded message -----

From: William House &lt;&gt;

To: whneinfo@gmail.com

Cc:

Bcc:

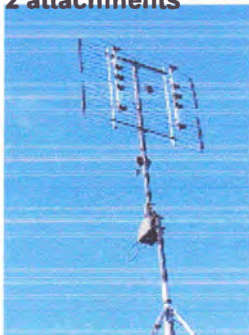
Date: Fri, 8 May 2020 19:47:22 -0400

Subject: Issues with channel

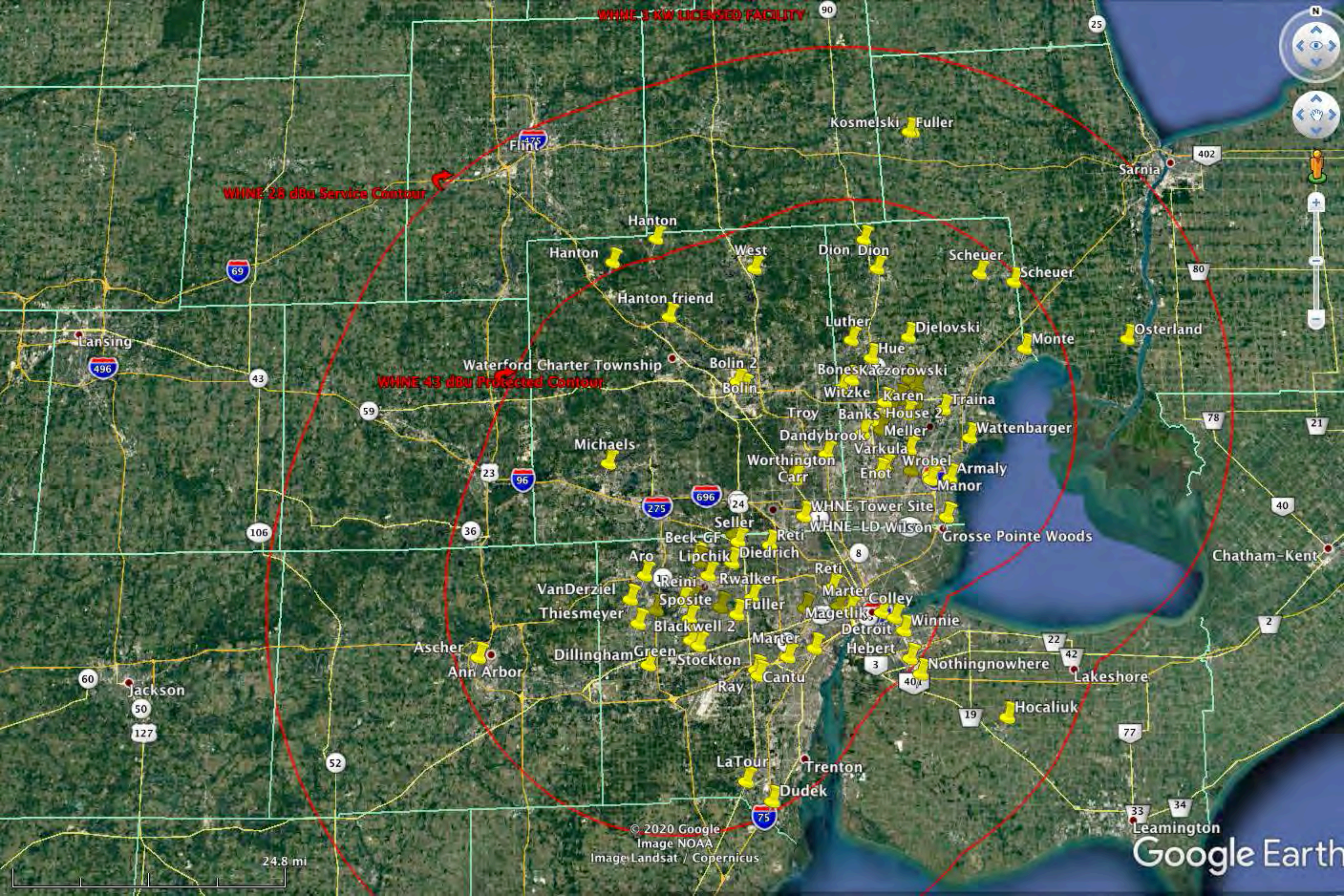
Igate your channel very clear when the weather is good. But wind and inclement weather I get no signals on any of your channels. It is like you turned off your transmitter. I would have thought I would have got pixelation at a minimum, but I get nothing.

I am at 17 mile and Van Dyke area in STERLING Heights.

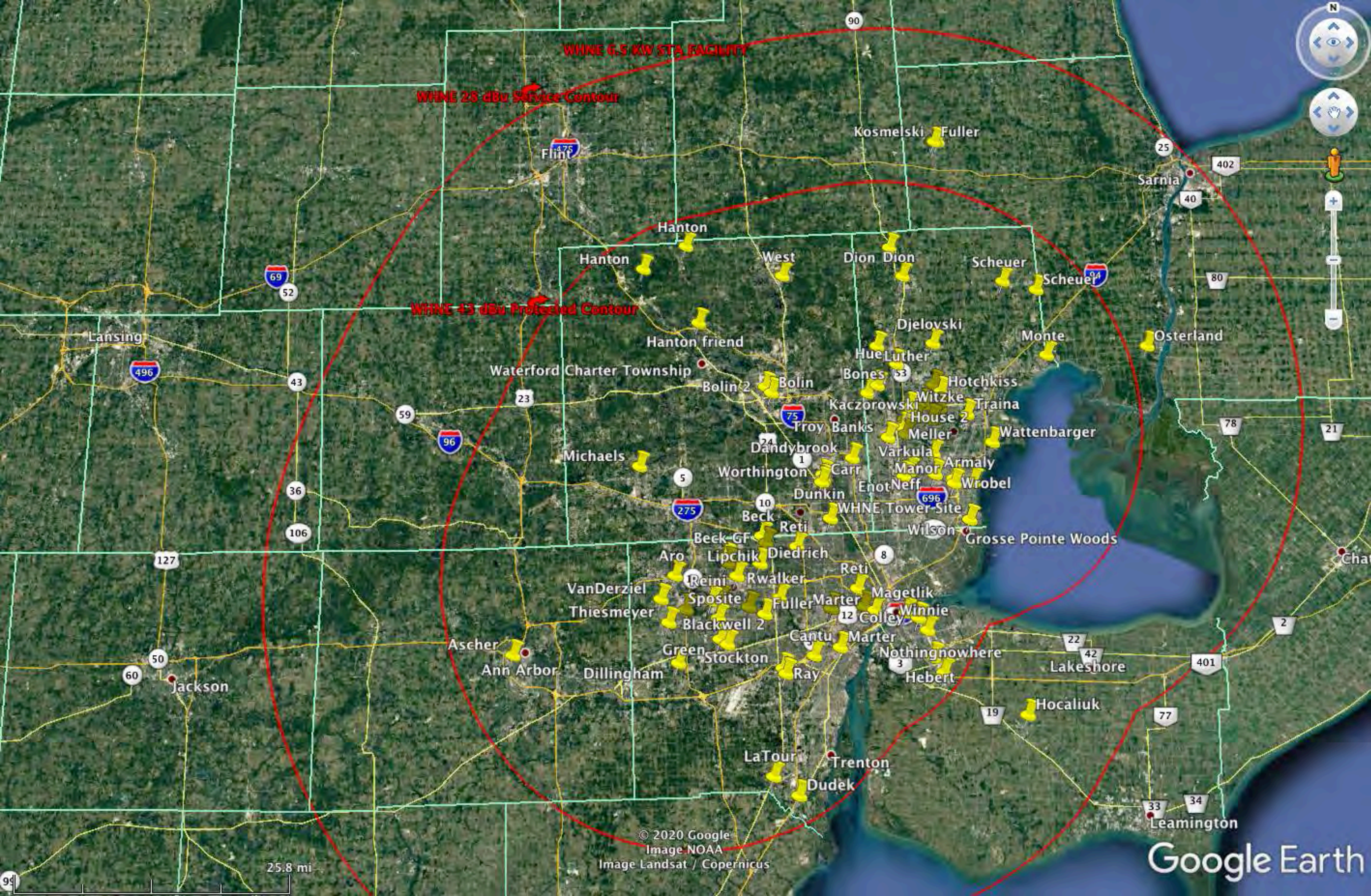
---

**2 attachments**[20200508\\_193714.jpg](#)  
790K[issues with channel.eml](#)  
1083K











## **EXHIBIT B**

**GREG BEST  
CONSULTING, INC.**

16100 Outlook Avenue  
Stilwell, KS 66085  
816-792-2913

## **SUPPLMENTAL TECHNICAL EXHIBIT FOR WHNE WAIVER APPLICATION TO MOVE TO CHANNEL 30**

The following technical exhibits are provided to support the requested waiver for WHNE to move from channel 3 to channel 30. The licensee received authorization to broadcast at 3 kW ERP consistent with the LPTV rules and its viewership had significant problems with reception from the licensed facility at an RCAGL of 476 ft. To overcome the manmade noise obstacle well known at low VHF, the licensee obtained an STA to operate at 6.5 kW (217 % of the nominal power). However, this was insufficient to overcome the reception problems (documented elsewhere in the application to which this exhibit is attached). The licensee is requesting a waiver from the minor change rules to change its channel of operation from channel 3 to channel 30.

The following technical exhibits support this request and provide the following information, 1) the proposed facility causes no interference and the applicant will accept the incoming interference, 2) the proposed facility does not contribute more than 5% from the RF exposure general population limit established in OET-65 and thus the facility can be excluded from requiring an environmental assessment from an RF exposure point of view, and 3) the protected contour of the proposed facility has overlap with the existing licensed facility. These exhibits confirm with the exception of the channel change, that the proposed facility is in compliance with all other technical requirements of the LPTV rules.

The TV Study interference analysis is supplied as a separate textfile exhibit . The interference analysis study was executed with the propagation parameters of a cell size of 0.2 km and a terrain spacing of 0.25 km and the proposed facility used a full service emission mask.

Sincerely,



Consulting Engineer



## RF EXPOSURE PREDICTION

This will serve as the exhibit to confirm that no significant Environmental Impact Assessment as defined in FCC Rule 1.1307 for the proposed facility is necessary. The site is not a Native American religious site, nor located in a flood plain area, nor officially designated wilderness area, nor officially designated wildlife preserve. Likewise, the proposed change of the facility does not include any lighting changes, nor creates any land disturbance or surface features to the existing facility.

To ensure the proposed facility does not create an RF Radiation Hazard, the calculation for this proposed facility is calculated below. The RF radiation near the ground (2 meters above ground) can be calculated using the OET-65 formula for broadcast television stations taking into account the following factors

S= power density in watts per square meter

P= total Effective Radiated Power from the antenna

F= field radiated on the axis to the ground level

R= distance to the ground level (actually 2 meters above ground)

Therefore, given the following data for the proposed facility:

P= 14.0 kwatts

R=Radiation center above ground level – 2 meters)  
= 143 meters

F= 0.1 for UHF antennas

The RF radiation near the ground level can be calculated with the following result:

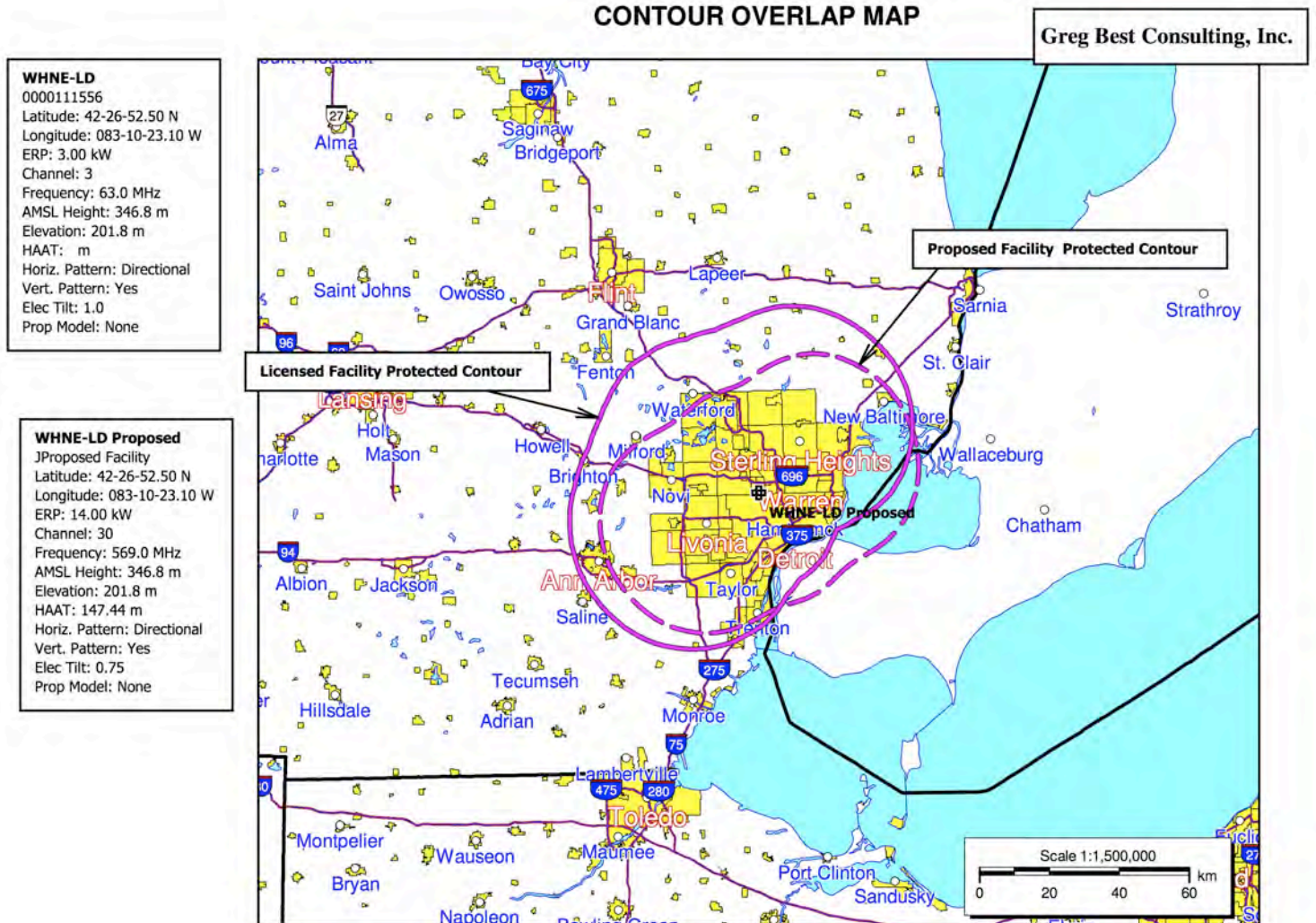
0.11  $\mu\text{watts}/\text{cm}^2$

which is 0.03 % of the general population exposure limit of 379  $\mu\text{w}/\text{cm}^2$  for this channel 30 facility

Since the contribution from this RF source is less than 5% of the MPE limit for Occupational/Controlled Exposure or General Population/Uncontrolled Exposure at any point on the ground, proposed facility is not considered a "significant contributor" to the RF exposure environment pursuant to OET Bulletin 65, Edition 97-01. The licensee, in coordination with the other users of the antenna facility, will reduce power or cease operation as necessary to protect persons having access to the tower or antenna from RF energy in excess of the FCC guidelines.

Should you have any questions regarding this information please contact me.

# CONTOUR OVERLAP EXHIBIT



tvstudy v2.2.5 (4uoc83)  
Database: localhost, Study: WHNE CH 30 PEANUT #1047, Model: Longley-Rice  
Start: 2020.12.04 07:40:05

Study last edited: 2020.12.03 08:14:03

Proposal: WHNE-LD D30 LD LIC DETROIT, MI  
File number: WHNE CH 30 PEANUT  
Facility ID: 168737  
Station data: User record  
Record ID: 673  
Country: U.S.

Proposal "before": (none)

Study has been edited. Stations studied for impact of proposal:

Call	Chan	Svc	Status	City, State	File Number	Distance
WGTE-TV	D29		DT LIC	TOLEDO, OH	BLEDT20031110AKO	90.4 km
WNEM-TV	D30		DT LIC	BAY CITY, MI	BLANK0000113433	126.1

Record parameters as studied:

Channel: D30  
Mask: Full Service  
Latitude: 42 26 52.50 N (NAD83)  
Longitude: 83 10 23.10 W  
Height AMSL: 346.8 m  
HAAT: 147.3 m  
Peak ERP: 14.0 kW  
Antenna: ALPH 60.0 deg  
Elev Pattn: Generic  
Elec Tilt: 1.00

50.3 dBu contour:

Azimuth	ERP	HAAT	Distance
0.0 deg	1.47 kW	132.5 m	34.5 km
45.0	12.4	155.0	46.9
90.0	8.17	155.2	44.8
135.0	0.780	152.8	32.5
180.0	1.28	157.9	35.4
225.0	12.2	154.9	46.8
270.0	8.54	146.7	44.4
315.0	0.868	123.8	31.2

\*\*Proposal 25.32 dBu contour crosses Canadian border, coordination required  
Distance to Canadian border: 17.0 km

Distance to Mexican border: 2151.3 km

Conditions at FCC monitoring station: Allegan MI  
Bearing: 275.3 degrees Distance: 228.6 km

Proposal is not within the West Virginia quiet zone area

Conditions at Table Mountain receiving zone:  
Bearing: 269.5 degrees Distance: 1853.7 km

Study cell size: 0.20 km  
Profile point spacing: 0.25 km

Maximum new IX to full-service and Class A: 0.50%  
Maximum new IX to LPTV: 2.00%

Interference to BLEDT20031110AKO LIC scenario 1  
Proposal causes no interference.

Interference to BLEDT20031110AKO LIC scenario 2  
Proposal causes no interference.

Interference to BLANK0000113433 LIC scenario 1

Call	Chan	Svc	Status	City, State	File Number	Distance
Desired:	WNEM-TV	D30	DT LIC	BAY CITY, MI		BLANK0000113433
Undesireds:	WHNE-LD	D30	LD LIC	DETROIT, MI	WHNE CH 30 PEANUT	126.1 km
	WGTV	D29	DT CP	TRAVERSE CITY, MI	BLANK0000035794	172.4
	WSJV	D30	DT LIC	ELKHART, IN	BLANK0000124380	283.2
	WMYD	D31	DT LIC	DETROIT, MI	BLANK0000125639	126.1
Service area	Terrain-limited		IX-free, before		IX-free, after	Percent New IX
25674.6	1,479,020	25650.4	1,473,199	25463.6	1,424,331	25410.9 1,417,322 0.21 0.49
Undesired	Total IX		Unique IX, before		Unique IX, after	
WHNE-LD D30 LD LIC	210.9		50,243		52.7 7,009	
WSJV D30 DT LIC	5.9		919 3.0 145		2.6 145	
WMYD D31 DT LIC	183.8		48,723 180.8 47,949		25.9 5,473	

Interference to proposal scenario 1  
31.23% interference received

Call	Chan	Svc	Status	City, State	File Number	Distance
Desired:	WHNE-LD	D30	LD LIC	DETROIT, MI		WHNE CH 30 PEANUT
Undesireds:	WNEM-TV	D30	DT LIC	BAY CITY, MI	BLANK0000113433	126.1 km
	WMYD	D31	DT LIC	DETROIT, MI	BLANK0000125639	0.0
Service area	Terrain-limited		IX-free		Percent IX	
4454.9	3,709,103	4450.9	3,708,930	2426.4	2,550,640	45.48 31.23
619.9	271,444	619.9	271,444	378.9	133,822	38.87 50.70 (in Canada)

Undesired	Total IX	Unique IX	Prent Unique IX				
WNEM-TV D30 DT LIC	61.2	14,943	0.0	0	0.00	0.00	
WMYD D31 DT LIC	2024.5	1,158,290	1963.3	1,143,347	44.11	30.83	
WMYD D31 DT LIC	241.0	137,622	241.0	137,622	38.87	50.70	(in Canada)