

**Broadcast Engineering Services of Bonny Doon, Inc.**

---

Donald E. Mussell Jr. NCE-CBT  
Consulting Engineer  
740 Front Street Suite 305  
Santa Cruz, Ca 95060

Hawaii Office:  
P.O. Box 983  
Kilauea, Hi 96754

(808) 828-0209 Office  
(831) 588-9463 Cell  
dmsml@well.com  
[www.well.com/user/dmsml](http://www.well.com/user/dmsml)

**Engineering Statement  
in support of a Minor Change  
K264BL, Honolulu, Hawaii  
BLFT-20151013AIM**

Hawaii Public Radio (HPR), licensee of K264BL, is requesting a minor change to the K264BL license, this to change the effective radiated power.

K264BL is a fill-in translator for KIPO, Honolulu. There are no full power FM or TV facilities in the entire state of Hawaii that are affected or overlapped by this proposal except for KCCN-FM and KORL-FM. Because the proposed 100 dbu F5/10 contour does not overlap any populated areas, it will not cause any interference. An allocation study, along with detail maps, is attached to this statement.

The proposed power increase is to .099 KW. This will contribute less than 1% to the existing RFR levels at this multi-user tower site. Because the proposed power is less than 100 watts, it is categorically exempt from environmental processing

This site is primarily accessible by helicopter, and located adjacent to a hiking trail, and fully surrounded by a security fence. RFR signage is already in place.

Respectfully submitted,



Donald E. Mussell Jr. NCE-CBT  
Consulting Engineer  
August 18, 2020

Broadcast Engineering Services of Bonny Doon, Inc  
Don Mussell, Consulting Engineer

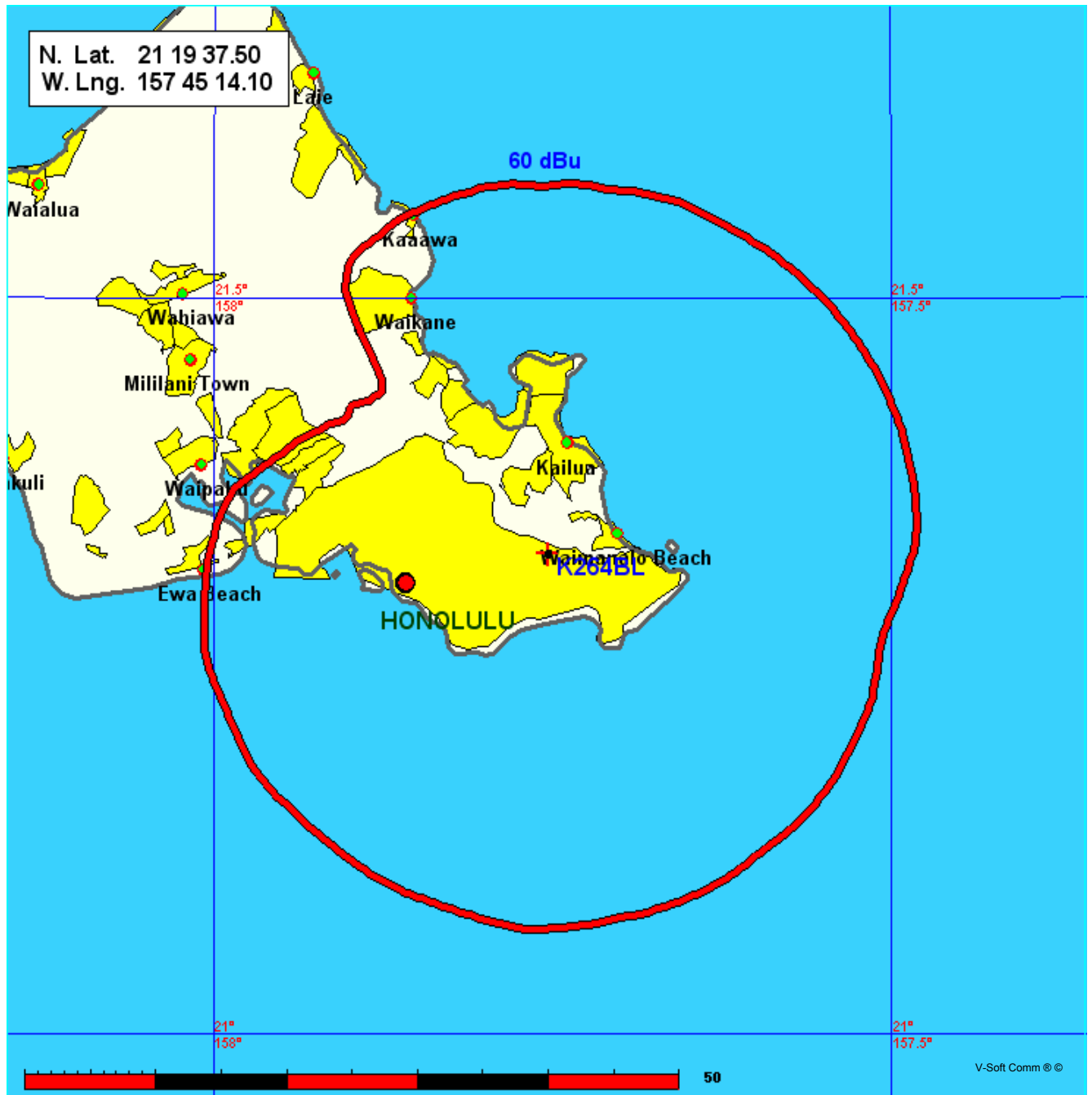
K264BL											
Hawaii Public Radio, Inc											
REFERENCE		CH#	264D	- 100.7 MHz, Pwr= 0.099 kw, HAAT= 667.9 M, COR= 748 M				DISPLAY DATES			
21 19 37.50 N.		Average Protected F(50-50)= 27.12 km				DATA 08-13-20					
157 45 14.10 W.		Omni-directional				SEARCH 08-13-20					
CH	CALL	TYPE	ANT	AZI	DIST	LAT	PWR(kw)	INT(km)	PRO(km)	*IN*	*OUT*
CITY		STATE		<--	FILE #	LNG	HAAT(M)	COR(M)	LICENSEE	(Overlap in km)	
264D	K264BL	LIC	---	0.0	0.00	21 19 37.50	0.010		---	Reference---	
Honolulu		HI		0.0	BLFT20151013AIM	157 45 14.10	668	748	Hawaii Public Radio, Inc		
266C	AL9254	RSV-A	---	281.9	36.40	21 23 39.64	100.000	15.1	95.5	-3.6	-59.8*
Waianae		HI		101.8	RM10623	158 05 51.13	600	736			
266C	KORL-FM	LIC	D---	282.1	36.63	21 23 45.00	100.000	14.5	94.8	-2.1	-58.9*
Waianae		HI		102.0	BLH20070706ACG	158 05 58.00	592	734	Hochman Hawaii-Three, Inc.		
262C	KCCN-FM	LIC	D---	281.9	36.40	21 23 39.60	100.000	14.0	94.1	-1.9	-58.3*
Honolulu		HI		101.8	BLH19940331KA	158 05 51.10	599	742	Sm-Kccn, LLC		
264C0	KMKV	LIC	---	113.7	169.35	20 42 34.00	3.500	167.5	77.6	-25.3	8.3
Kihei		HI		294.2	BLED20190917AAD	156 15 49.00	1798	2995	Educational Media Foundati		

Terrain database is FCC NGDC 30 sec , R= 73.215 qualifying spacings or FCC minimum spacings in KM, M= Margin in KM  
In & Out distances between contours are shown at closest points. Reference zone= West Zone, Co to 3rd adjacent.  
All separation margins (if shown) include rounding.  
Ant Column: (D= DA Standard, Z= DA 73.215, N= Not DA 73.215, \_= Omni), Polarization (C,H,V,E), Beamtilt(Y,N,X)  
"\*"affixed to 'IN' or 'OUT' values = site inside restricted contour.

K264BL Proposed  
Hawaii Public Radio, Inc

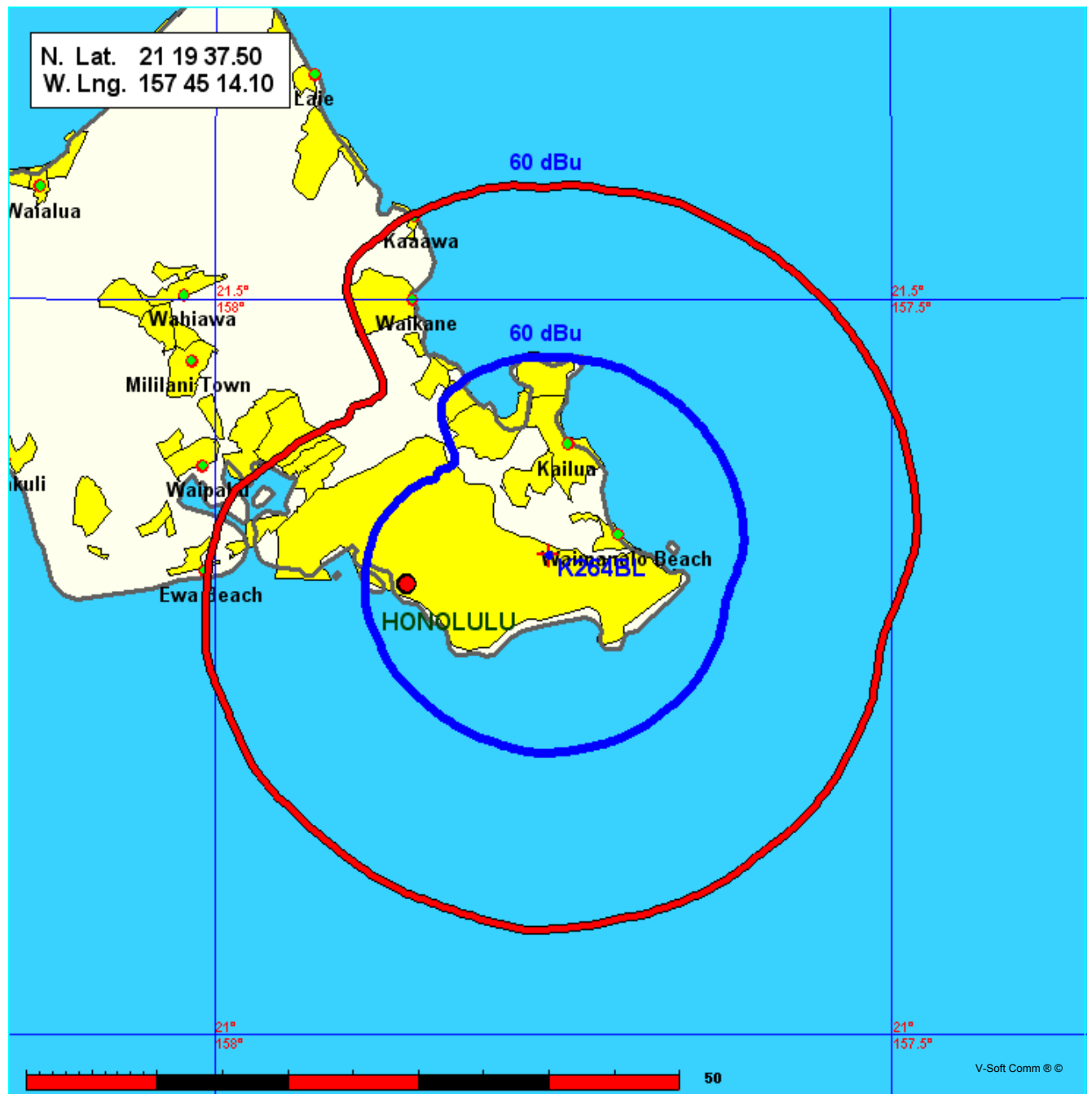
Coverage Study - FCC NGDC 30 Sec  
08-17-2020

K264BL CH264 D , 0.099 kW, 667.9m HAAT, 748.0m COR AMSL  
Service Contour = 60 dBu.



K264BL Existing and Proposed  
Hawaii Public Radio, Inc

Coverage Study - FCC NGDC 30 Sec  
08-17-2020



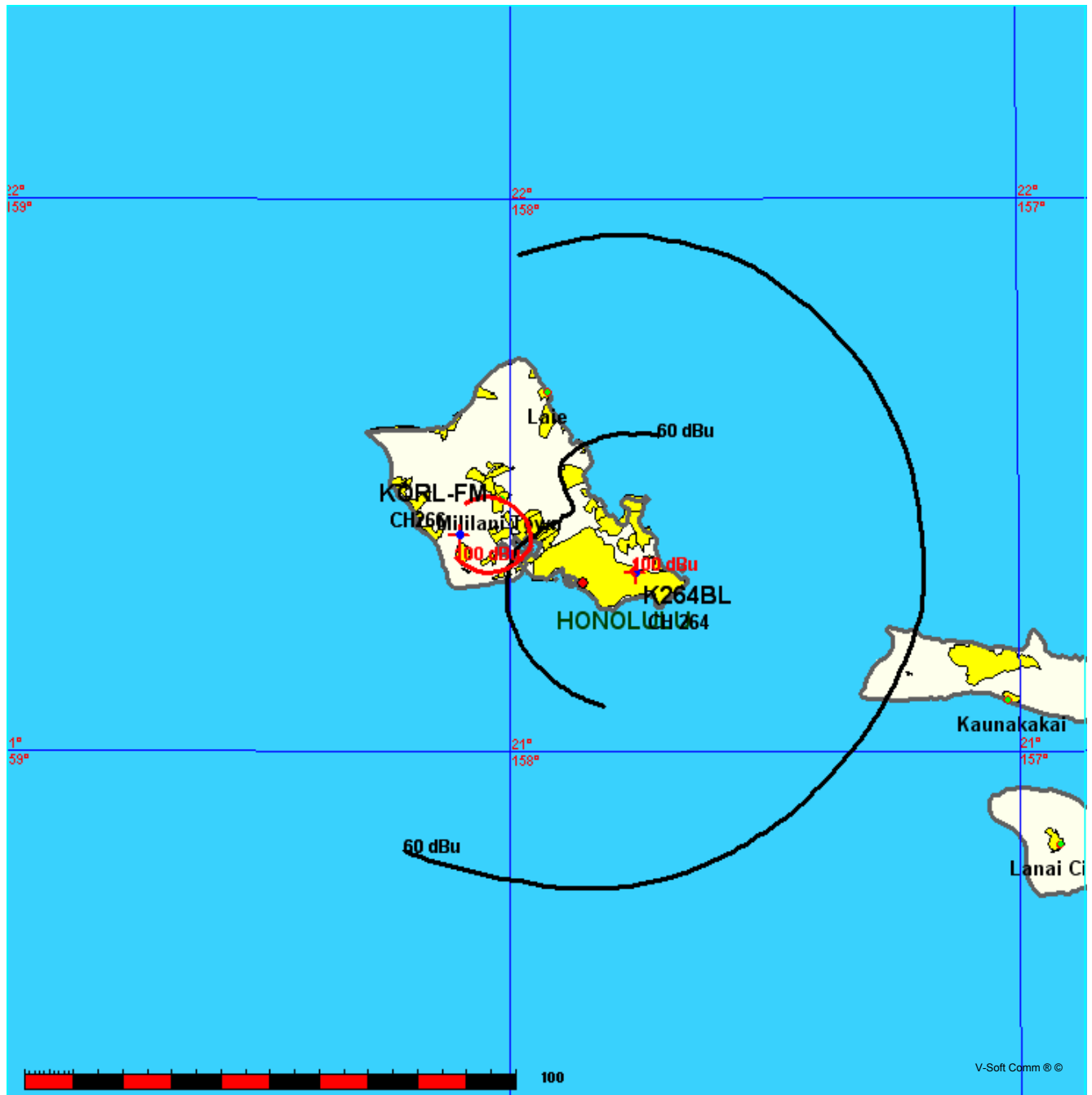


K264BL - KORL  
Hawaii Public Radio, Inc

FMCommander Single Allocation Study - 08-17-2020 - FCC NGDC 30 Sec  
K264BL's Overlaps (In= -2.1 km, Out= -58.88 km)

K264BL CH 264 D  
Lat= 21 19 37.50, Lng= 157 45 14.10  
0.099 kW 667.9 m HAAT, 748 m COR  
Prot.= 60 dBu, Intef.= 100 dBu

KORL-FM CH 266 C DA BLH20070706ACG  
Lat= 21 23 45.00, Lng= 158 05 58.00  
100.0 kW 592 m HAAT, 734 m COR  
Prot.= 60 dBu, Intef.= 100 dBu

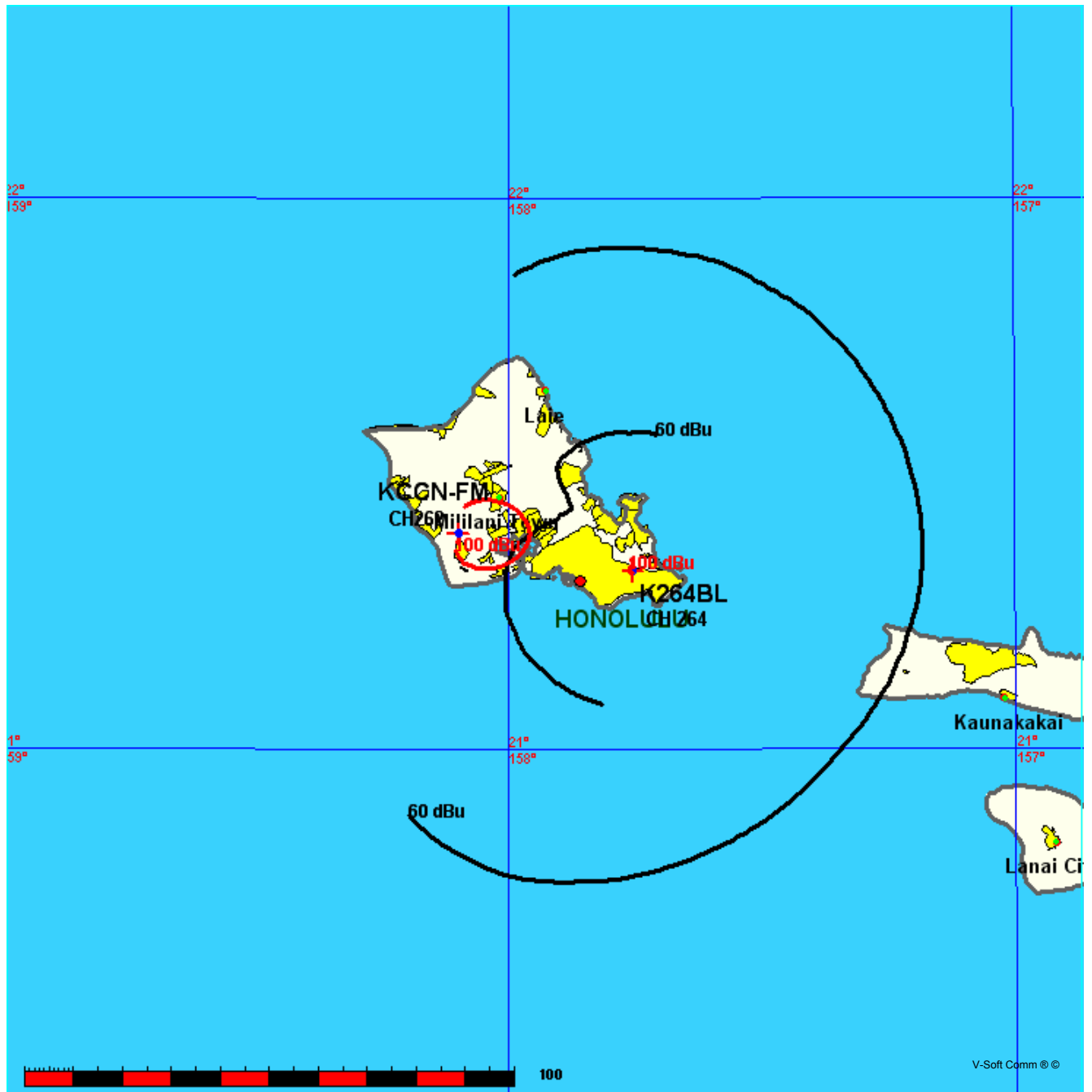


K264BL - KCCN  
Hawaii Public Radio, Inc

FMCommander Single Allocation Study - 08-17-2020 - FCC NGDC 30 Sec  
K264BL's Overlaps (In= -1.91 km, Out= -58.35 km)

K264BL CH 264 D  
Lat= 21 19 37.50, Lng= 157 45 14.10  
0.099 kW 667.9 m HAAT, 748 m COR  
Prot.= 60 dBu, Intef.= 100 dBu

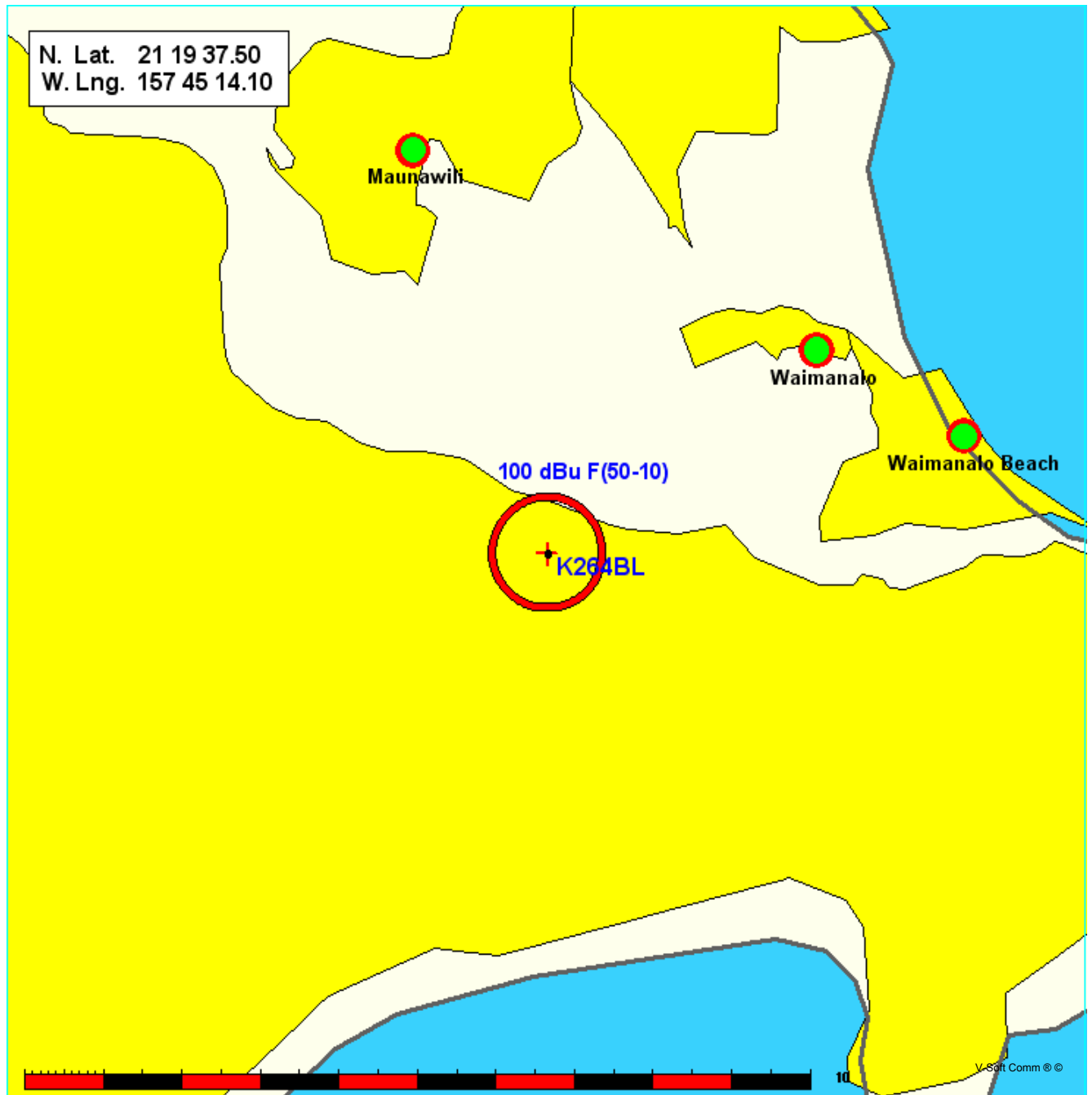
KCCN-FM CH 262 C DA BLH19940331KA  
Lat= 21 23 39.60, Lng= 158 05 51.10  
100.0 kW 599 m HAAT, 742 m COR  
Prot.= 60 dBu, Intef.= 100 dBu



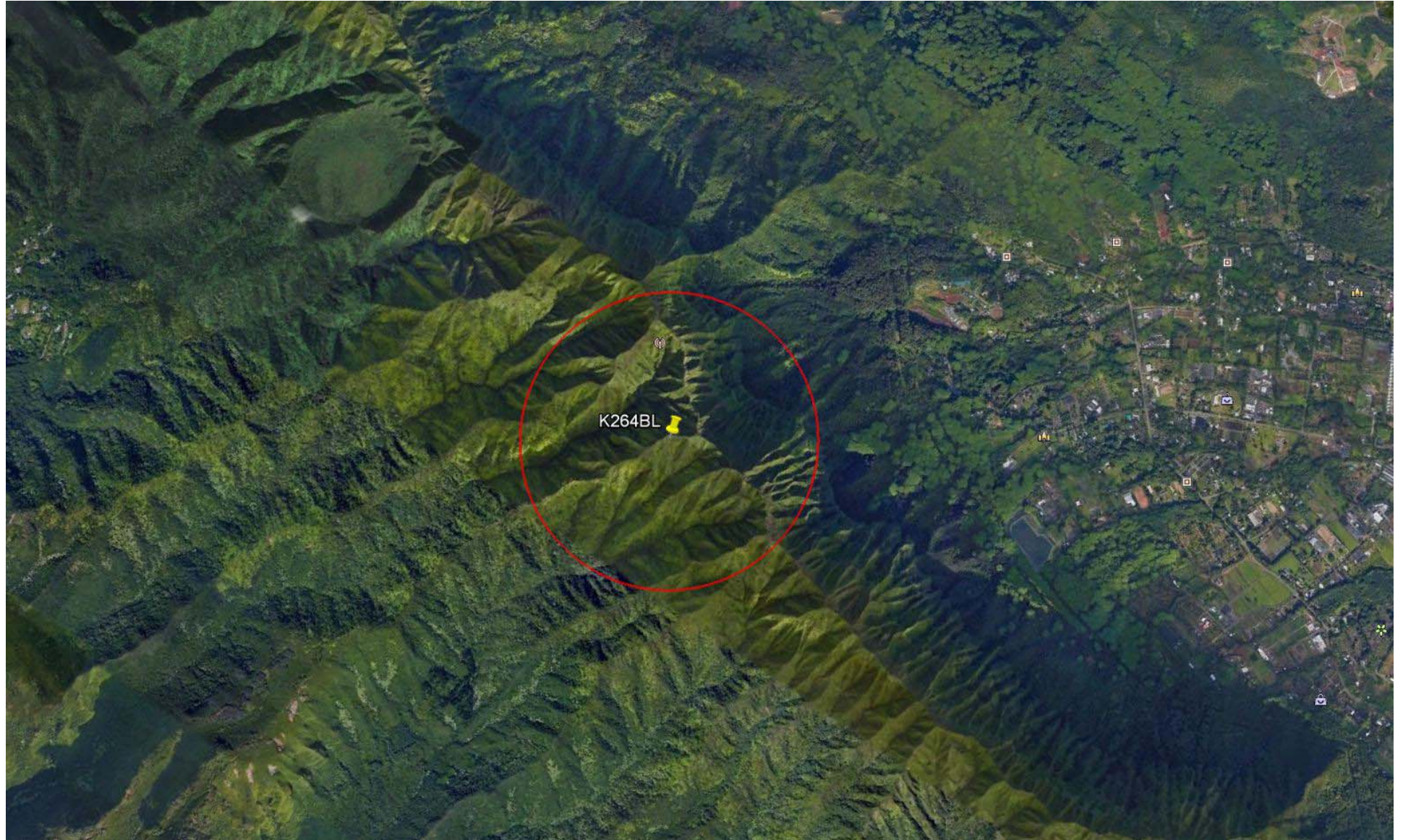
K264BL - Proposed 100 dbu F50/10  
Hawaii Public Radio, Inc

Coverage Study - FCC NGDC 30 Sec  
08-17-2020

K264BL CH264 D , 0.099 kW, 667.9m HAAT, 748.0m COR AMSL  
Service Contour = 100 dBu.







State of Hawaii )  
Kilauea )  
County of Kauai )

That he declares, under penalty of perjury, that the foregoing engineering exhibits were prepared by him or under his direction and supervision; and that the statements contained therein are true and correct to the best of his belief and knowledge.

Donald E. Mussell Jr. NCE-CBT  
Consulting Engineer  
August 18, 2020