

W226BY 93.1 MHz (Ch.226) TOCCOA, GA
 GEORGIA-CAROLINA RADIOCASTING COMPANY, LLC
 Minor Modification of a Licensed Facility for FM Translator Application

Minor Change Showing. 60 dBu contour contained inside both the 2 mV and 25 mile radius contour of primary station WNEG (AM). 74.1204(a) contour protection of 3rd adjacent WFBC-FM. (GLOBE digital elevation model terrain data is used)

0 5 10 20 Kilometers

Figure 1

Robert J. Robbins, Ph.D.
 www.radiodataservices.com
 radiodataservices@radiodataservices.com
 (305) 234-9309

Table 1

W226BY Minor Modification of a Licensed Facility for FM Translator Application July 2020

74.1204(a) Channel Study

Chan	Class	Call Letters	Type	Status	City	State	Country	Owner	Bearing TO (deg)	Distance (km)	Req. Dist. (km)	Clearance (km)	Field Strength (dBu)
223	C	WESC-FM	FM	L-L2C	GREENVILLE	SC	US	CLEAR CHANNEL BROADCAST	45.7	97.4	88.1	9.3	55.6
225	D	W225AZ	FX	L-L2C	GREENVILLE	SC	US	TOWER ABOVE MEDIA LLC	62.2	99.3	53.1	46.2	18.8
225	A	WZLA-FM	FM	L-L2C	ABBEVILLE	SC	US	RONALD SHELLEY REID	111.2	103.7	59.8	43.9	24.4
225	C1	WZGC	FM	L-MOD	ATLANTA	GA	US	ENTERCOM LICENSE, LLC	228.1	119.5	105.2	14.3	40.3
226	D	W226BY	FX	L-L2C	TOCCOA	GA	US	GEORGIA-CAROLINA RADIO	1.9	0.1	84.5	-84.4	123.1 (applicant)
226	L1	WUCG-LP	FL	L-L2C	BLAIRSVILLE	GA	US	THE MISSIONARY QUARTER	299.4	66.9	61.7	5.2	14.4
226	A	WCHZ-FM	FM	L-L2C	WARRENTON	GA	US	BEASLEY MEDIA GROUP LICE	148.4	134.0	101.4	32.6	18.6
227	L1	WPLP-LP	FL	L-L2C	ATHENS	GA	US	THE ATHENIAN MULTICULTUR	180.0	63.3	44.1	19.2	16.8
227	C	WTPT	FM	L-MOD	FOREST CITY	NC	US	ENTERCOM LICENSE, LLC	51.3	133.0	116.4	16.6	40.9
228	D	W228CA	FX	L-L2C	SUWANEE	GA	US	COX RADIO, LLC	224.8	63.0	27.0	36.0	41.1
229	C	WFBC-FM	FM	L-AMD	GREENVILLE	SC	US	ENTERCOM LICENSE, LLC	47.1	95.6	93.9	1.7	58.8

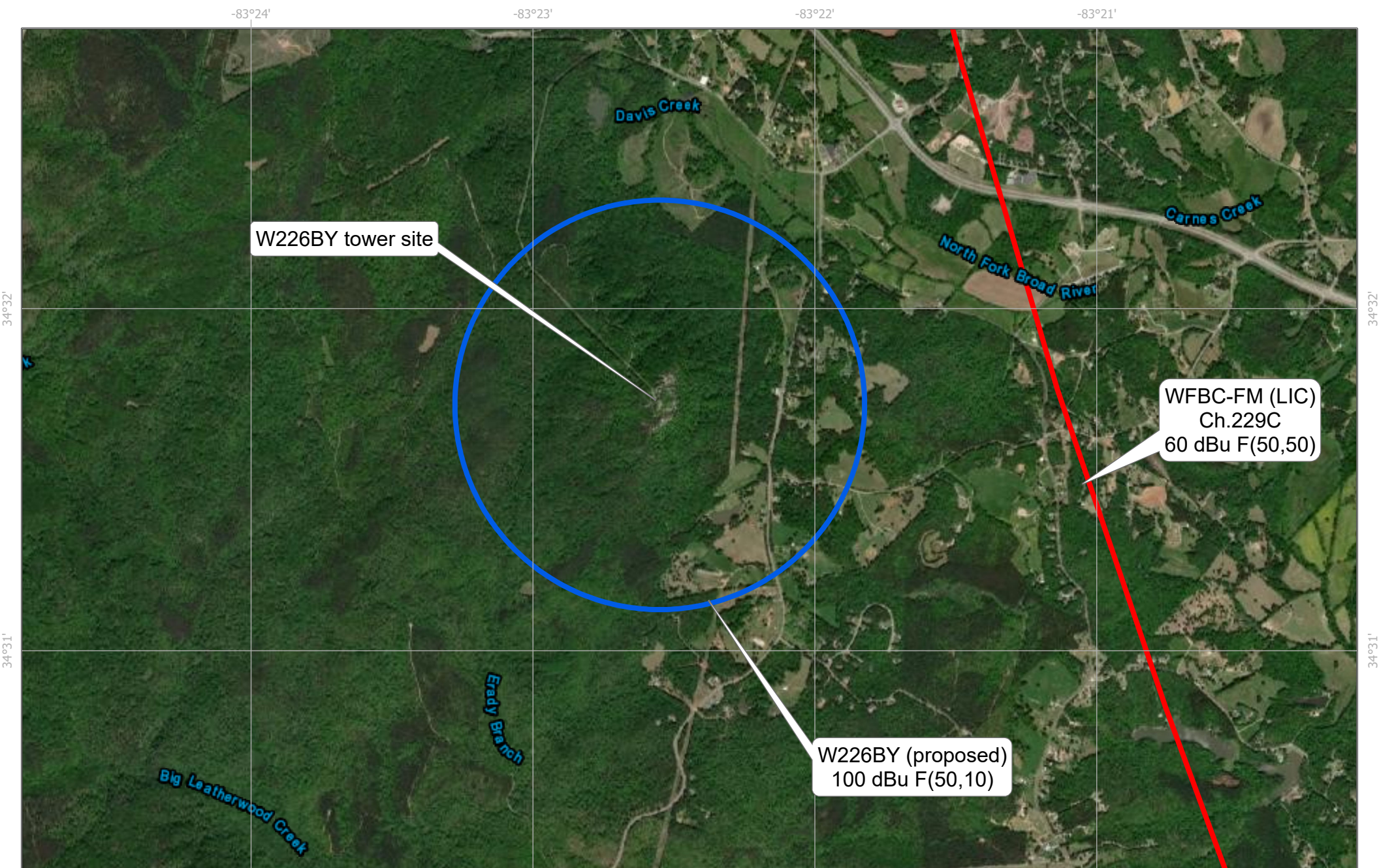
NOTE: GLOBE digital elevation model terrain data is used. There is no contour overlap and this proposal is compliant with Rule 74.1204(a).

Table 2

W226BY Minor Modification of a Licensed Facility for FM Translator Application July 2020

74.1204(g) Channel Study

Chan	Class	Call Letters	Type	Status	City	State	Country	Owner	Bearing TO (deg)	FCC Dist.(km)	Rule 73.207 Req. (km)	Clearance (km)
279	C3	WXKT	FM	L-L2C	MAYSVILLE	GA	US	COX RADIO, LLC	237.2	31.0	12.0	19.0



W226BY 93.1 MHz (Ch.226) TOCCOA, GA
 GEORGIA-CAROLINA RADIOCASTING COMPANY, LLC
 Minor Modification of a Licensed Facility for FM Translator Application

74.1204(a) contour protection of 3rd adjacent WFBC-FM.
 (GLOBE digital elevation model terrain data is used)

Robert J. Robbins, Ph.D.
www.radiodataservices.com
radiodataservices@radiodataservices.com
 (305) 234-9309

Radiofrequency Electromagnetic Exposure Analysis

Source	Height AGL(m)	Antenna type	Bays	Horizontal ERP (kw)	Vertical ERP (kw)	Power Density $\mu\text{W}/\text{cm}^2$ at 2 meters AGL				
						within 10 meters distance	% controlled environment limit (1000 $\mu\text{W}/\text{cm}^2$)	Max. PD	% uncontrolled environment limit (200 $\mu\text{W}/\text{cm}^2$)	Distance to maximum PD (m)
W226BY (proposed)	79.3	SHI-6812B-2	2	0.25	0.25	0.04	0.004%	0.37	0.2%	51.2
						0.04	0.004%	0.37	0.2%	51.2

The proposed facility is excluded from environmental processing under 47. C.F.R. Section 1.1306 (i.e., The facility will not have a significant environmental impact and complies with the maximum permissible radiofrequency electromagnetic exposure limits for controlled and uncontrolled environments).

Calculations made using FCC FMModel