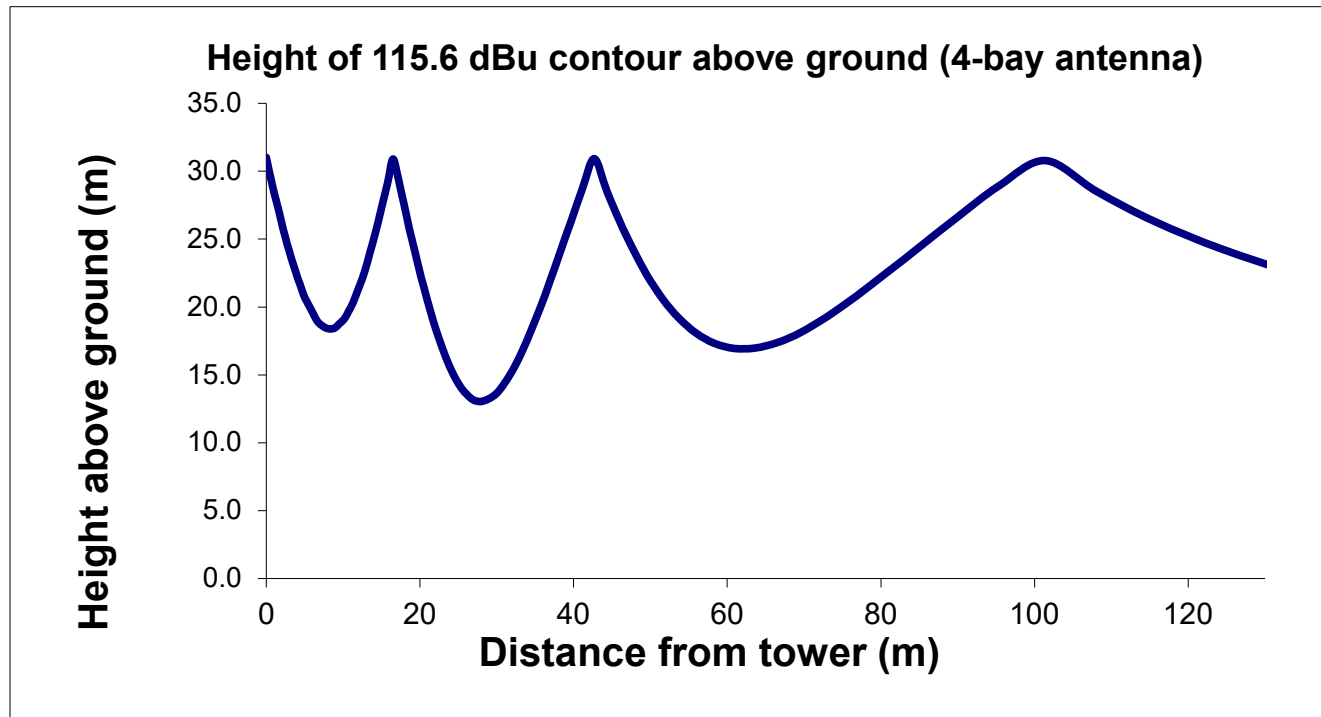


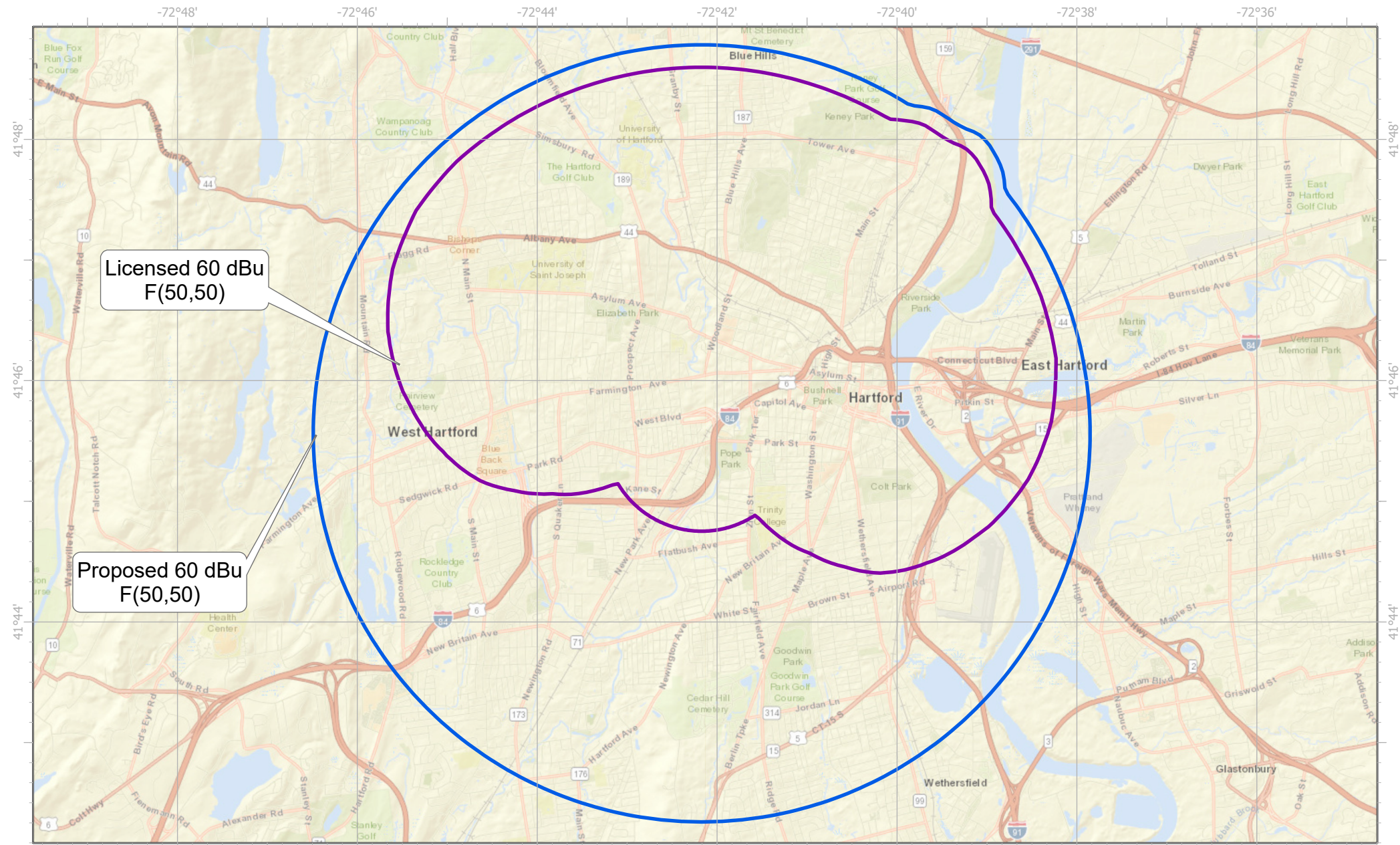
**Table 1 W261BU Minor Change to Licensed Facility February 17 2020**

**Channel Study**

Chan	Class	Call Letters	Type	Status	City	State	Country	Owner	Bearing TO (deg)	Distance (km)	Req. Dist. (km)	Clearance (km)	Field Strength (dBu)	
277	D	W277DT	FX	L-L2C	HARTFORD	CT	US	RED WOLF BROADCASTING	69.1	2.3	14.7	-12.3	89.7	See NOTE
277	D	W277CE	FX	L-L2C	MONTVILLE	CT	US	CONNECTICUT CHRISTIAN R/	127.7	52.6	7.7	44.9		
277	A	WQQQ	FM	L-MOD	SHARON	CT	US	THE RIDGEFIELD BROADCAST	284.1	74.2	28.3	45.9		
278	L1	WSIM-LP	FL	L-L2C	SIMSBURY	CT	US	SIMSBURY FIRE DISTRICT	328.5	18.8	15.8	2.9		
278	D	WCCH	FM	L-L2C	HOLYOKE	MA	US	HOLYOKE COMMUNITY COLI	6.0	49.1	14.5	34.6		
278	L1	WNHH-LP	FL	L-L2C	NEW HAVEN	CT	US	ONLINE JOURNALISM PROJE	200.8	49.6	14.1	35.4		
278	L1	WONH-LP	FL	L-L2C	NEW HAVEN	CT	US	PEQUENAS LIGAS HISPANAS	198.6	50.7	14.1	36.5		
279	D	W279CI	FX	L-AMD	DANBURY	CT	US	THE BERKSHIRE BROADCAST	235.5	75.2	37.2	38.0		
279	B	WVEI-FM	FM	L-MOD	WESTERLY	RI	US	ENTERCOM LICENSE, LLC	102.7	91.3	91.1	0.2		
281	B	WMRQ-FM	FM	L-L2C	WATERBURY	CT	US	RED WOLF BROADCASTING	208.2	24.9	67.9	-43.0	75.6	See NOTE

NOTE: Second adjacent WMRQ-FM has the lowest field strength at the proposed site and is therefore the "worst case" potential to receive interference from the proposed W261BU facility on Channel 279. The field strength of WMRQ-FM is 75.6 dBu F(50,50) at the proposed W261BU site. Therefore, the W261BU interfering contour is the W261BU 115.6 dBu F(50,10). The proposed W261BU interfering contour will not reach any lower than 13 meters above ground level. At 13 meters above ground level, the W261BU interfering contour will remain above the roofs of the adjacent 3 story residential buildings located 94 to 130 meters from the W261BU antenna and will remain above the highest occupied workspaces of the adjacent office buildings (SEE FIGURE 2). Therefore this proposal is compliant with the allowance of Rule 74.1204(d). (SEE FIGURE 2).





W261BU TALCOTTVILLE, CT  
 REVIVAL CHRISTIAN MINISTRIES, INC.  
 Minor Change To Licensed Facility  
 Requested: Channel 279 D (103.7 MHz)

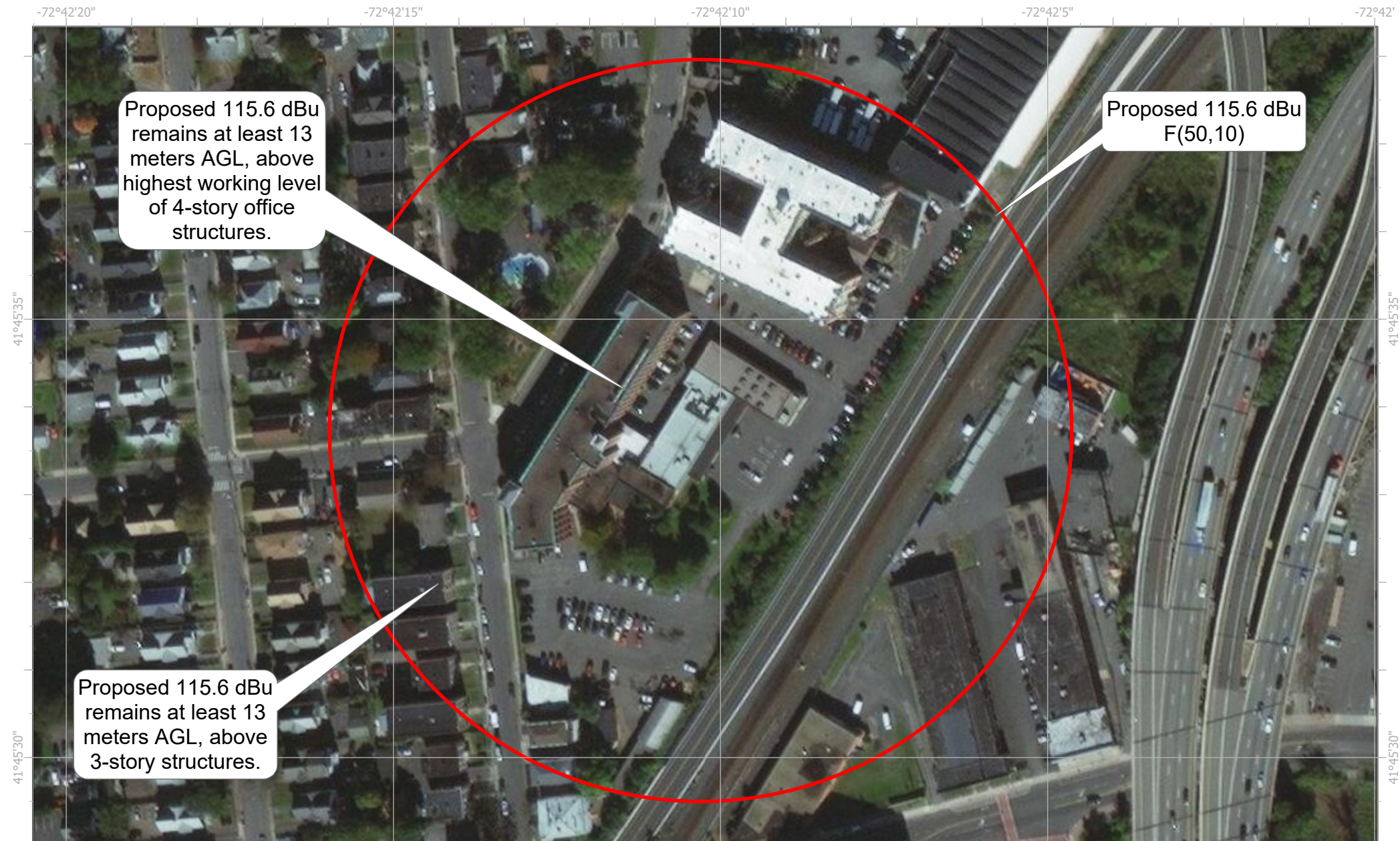
Minor change showing

0 2 4 8 Kilometers

Figure 1

Robert J. Robbins, Ph.D.  
 www.radiodataservices.com  
 radiodataservices@radiodataservices.com  
 (305) 234-9309





W261BU TALCOTTVILLE, CT  
REVIVAL CHRISTIAN MINISTRIES, INC.  
Minor Change To Licensed Facility  
Requested: Channel 279 D (103.7 MHz)

2nd adjacent channel interference exhibit with respect to WMRQ-FM.  
WMRQ-FM field strength: 75.6 dBu F(50,50)

Figure 2

Robert J. Robbins, Ph.D.  
[www.radiodataservices.com](http://www.radiodataservices.com)  
[radiodataservices@radiodataservices.com](mailto:radiodataservices@radiodataservices.com)  
(305) 234-9309

**Non-adjacent channel move request**

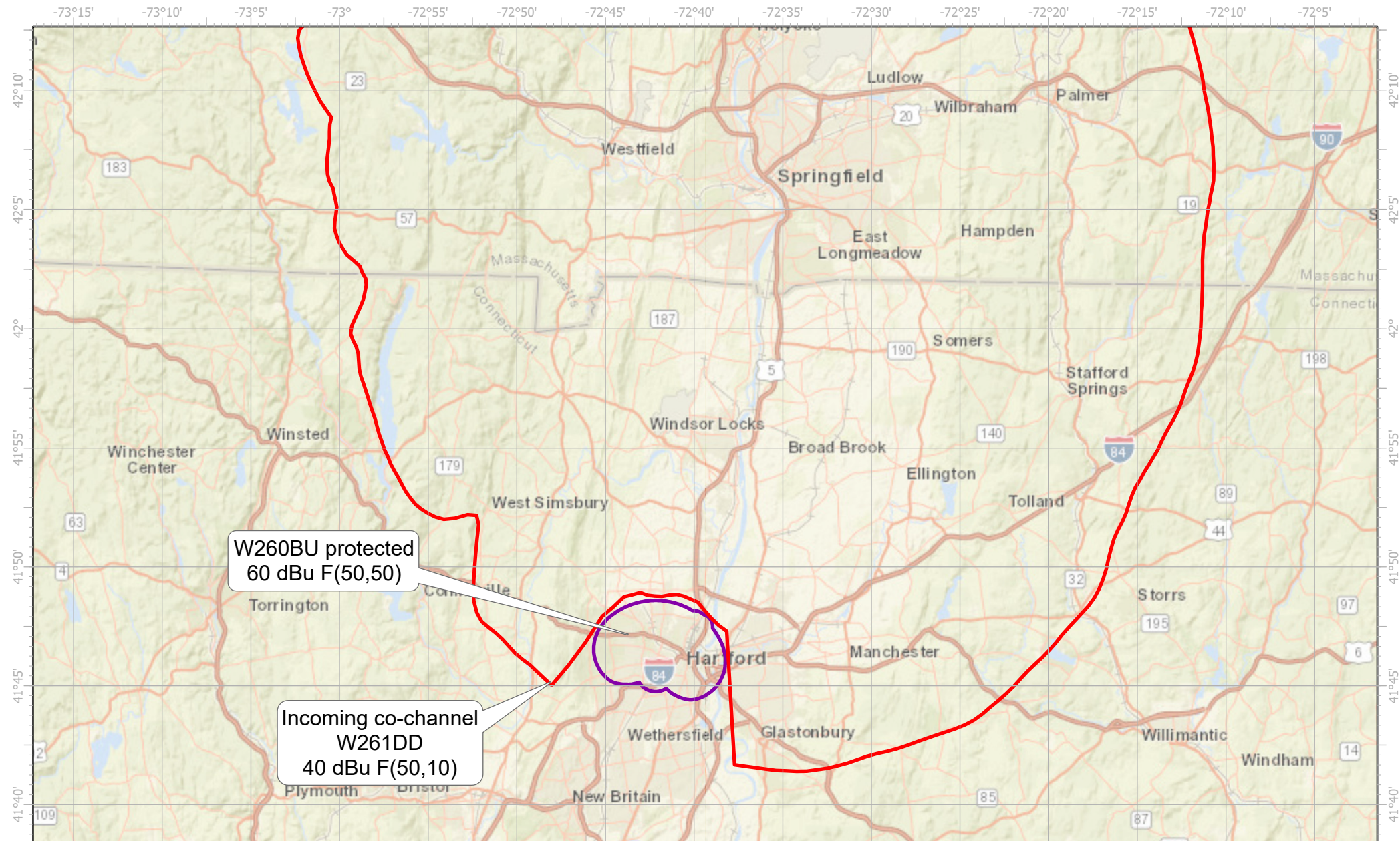
The licensee of W261BU requests a non-adjacent move to channel 279D in accordance with CFR §74.1233(a)(1) as modified In FCC 19-40, May 9, 2019.

In that Report and Order, the Commission explained that: “For these reasons, we modify section 74.1233(a)(1) of the Commission’s rules(Rules) to define an FM translator’s change to any available same-band FM channel as a minor change, upon a showing of **actual** or predicted **interference** to or **from any other broadcast station** (emphasis added).”

Required showing: Figure 3 demonstrates the incoming interference from co-channel translator station W261DD on 261D at SPRINGFIELD, MA.

The translator will continue to rebroadcast WSGG(FM) at Canaan, CT (FCC facility # 92857).





W261BU TALCOTTVILLE, CT  
 REVIVAL CHRISTIAN MINISTRIES, INC.  
 Minor Change To Licensed Facility  
 Requested: Channel 279 D (103.7 MHz)

Demonstration of incoming interference received. W261BU receives receives substantial co-channel interference from W261DD. W261DD (BLFT-20161013AAK) was authorized after W261BU BLFT-20150204ADF. W261DD proposed protection of W261BU via a "notch" in its proposed pattern.

Robert J. Robbins, Ph.D.  
 www.radiodataservices.com  
 radiodataservices@radiodataservices.com  
 (305) 234-9309

Figure 3

## Radiofrequency Electromagnetic Exposure Analysis

Source	Height AGL(m)	Antenna type	Bays	Horizontal ERP (kw)	Vertical ERP (kw)	Power Density $\mu\text{W}/\text{cm}^2$ at 2 meters AGL				
						within 10 meters distance	% controlled environment limit (1000 $\mu\text{W}/\text{cm}^2$ )	Max. PD	% uncontrolled environment limit (200 $\mu\text{W}/\text{cm}^2$ )	Distance to maximum PD (m)
W261BU proposed	29	SHI 6812B-4	4	0.126	0.126	0.8	0.08%	0.84	0.42%	12.2
						0.8	<b>0.08%</b>	0.84	<b>0.42%</b>	12.2

The proposed facility is excluded from environmental processing under 47. C.F.R. Section 1.1306 (i.e., The facility will not have a significant environmental impact and complies with the maximum permissible radiofrequency electromagnetic exposure limits for controlled and uncontrolled environments).

Calculations made using FCC FM Model