



REC Networks / REC ネットワーク

J1 Radio/J1 ラジオ

11541 Riverton Wharf Rd
Mardela Springs, MD 21837
+1 202 621-2355

<http://www.recnet.com>

<http://www.J1FM.tokyo>

Michelle ("Michi") Bradley, CBT

Founder of REC/Director of J1 Radio

SBE Certified

REC 代表取締役

J1 ラジオ ディレクター

mae@recnet.com

In the matter of:

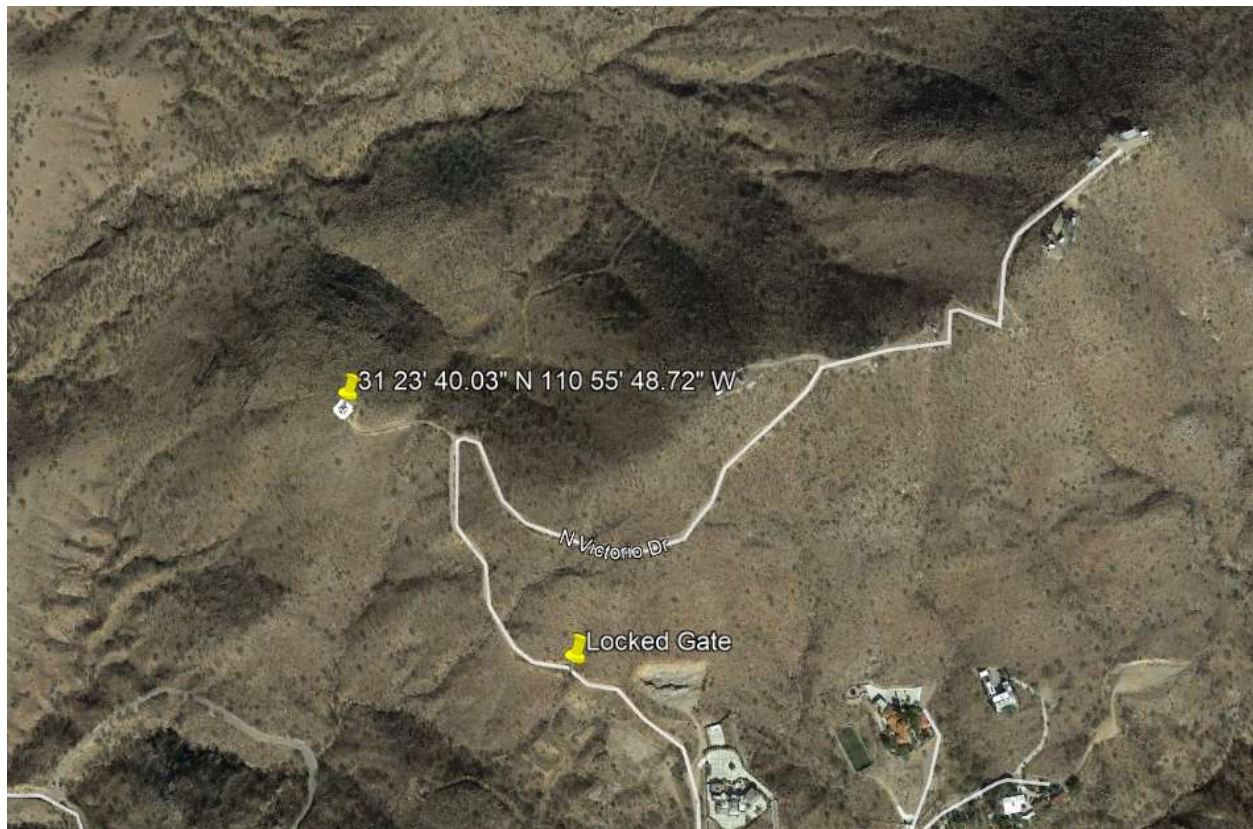
Felix Corporation

KOFH

BMPH-20190424ABA

LICENSE TO COVER – RFR PROTECTION – CP CONDITION #2

As stated in the original application, the location of the antenna is on a mountain that is accessed controlled by a locked gate about 340 meters distant and 30 meters lower from the base of the tower. The applicant has placed fencing surrounding the tower structure and has placed signs in English and Spanish at various locations around immediate area of the tower and at 9 meters from the tower site to warn trespassers of the danger of radio frequency radiation in the area. Because of the terrain, the site is not normally accessible through any method other than the access road. While there are other transmitter sites a distance away, the KOFH site does not have any other regulated services.



Antenna type: JAMPRO JLPC-4

Freq: 99.1 MHz

Circularly polarized

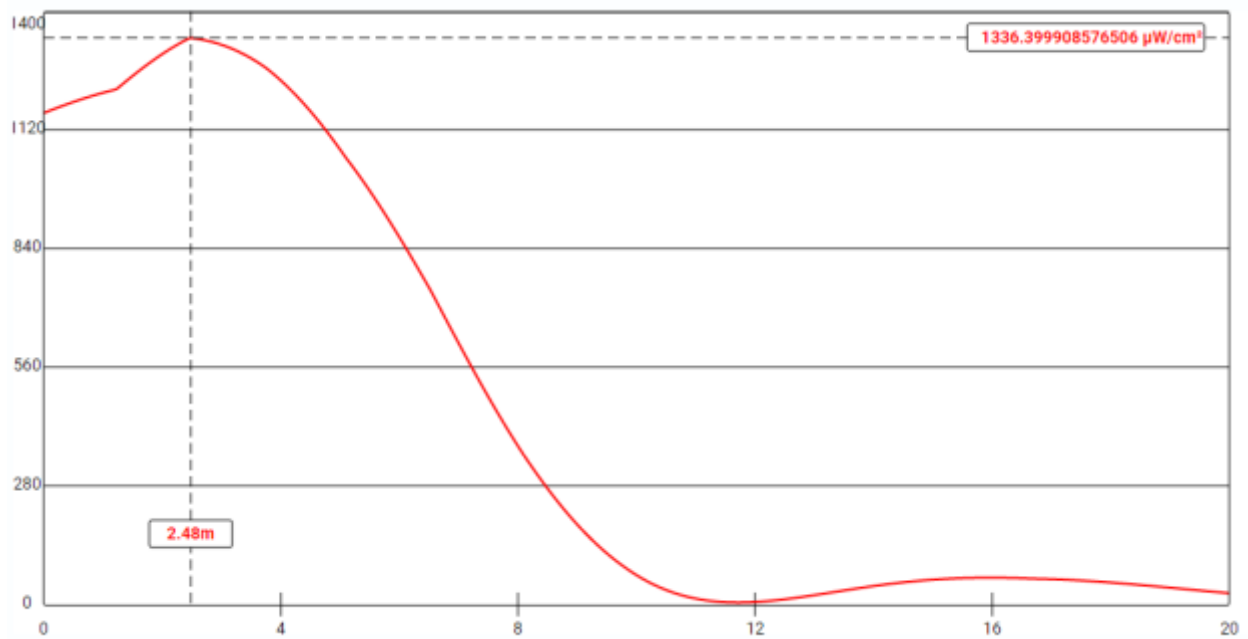
ERP: 6kW (H) & 6 kW (V)

Sections: 4

Spacing 1 wavelength

200 $\mu\text{W}/\text{cm}^2$ distance 8.9m

1000 $\mu\text{W}/\text{cm}^2$ distance 5.4m



Photos provided by applicant:









