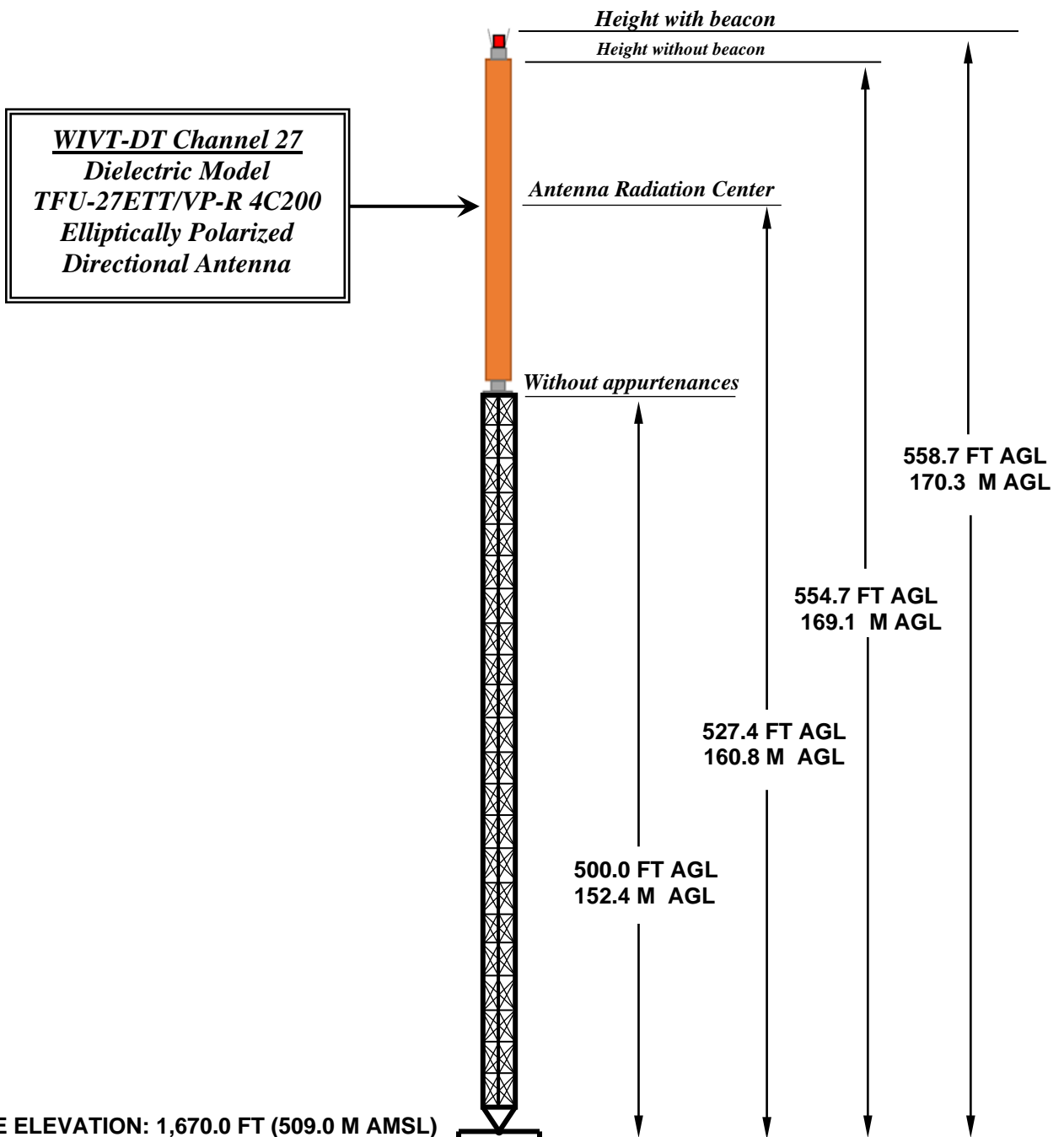


WIVT-DT PROPOSED ELEVATION VIEW



OVERALL HEIGHT AGL:	170.3 M
OVERALL HEIGHT AMSL:	679.3 M
RADIATION CENTER AGL:	160.8 M
RADIATION CENTER AMSL:	669.8 M
RADIATION CENTER HAAT:	275.4 M
AVG OF ALL NON-ODD RADIALS:	394.4 M
SITE HAAT:	114.6 M

COORDINATES (NAD 83):

N. LATITUDE 42° 03' 39"
W. LONGITUDE 75° 56' 35"

Antenna Structure Registration Number:
1007060

NOTE: NOT TO SCALE

Kessler and Gehman Associates, Inc.



Consultants • Broadcast • Wireless
507 NW 60th Street, Suite C
Gainesville, FL 32607
www.kesslerandgehman.com

WIVT-DT CHANNEL 27

Binghamton, New York

20190802

EXHIBIT 1