



6868 Vivian St., Arvada, CO 80004
Phone: 303-465-5742
E-Mail: stcl@comcast.net

B. W. St. Clair

Re: KLSV FI 5339

The underlying Construction Permit specifies the Antenna Concepts model, ACS8B, Antenna ID 17790. This manufacturer is no longer in business. Propagation Systems, Inc. manufactures the identical antenna, Antenna ID 20484. PSI Model PSILP8BB.

As part of this exhibit the relative field values for both antennas are attached as well as contour plots. The coverage is identical with the available PSILP8BB antenna. This exhibit is to note the change of antenna make and model to match the actual construction of the station.

Respectfully submitted,

Susan Hansen
Consultant
December 7, 2018

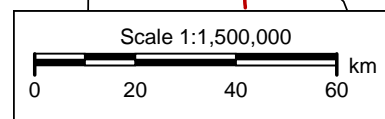
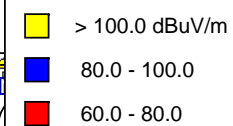
ANT ACS8B ANTENNA ID 17790

KLSV-LD.C

Las Vegas



Henderson



V-Soft Communications LLC ® ©

KLSV-LD.C

0000052473

Latitude: 36-00-30.98 N

Longitude: 115-00-18.73 W

ERP: 10.00 kW

Channel: 21

Frequency: 515.0 MHz




AMSL Height: 995.9 m

Elevation: 967.4 m

Horiz. Pattern: Directional

PSILP8BB ANTENNA ID 20484

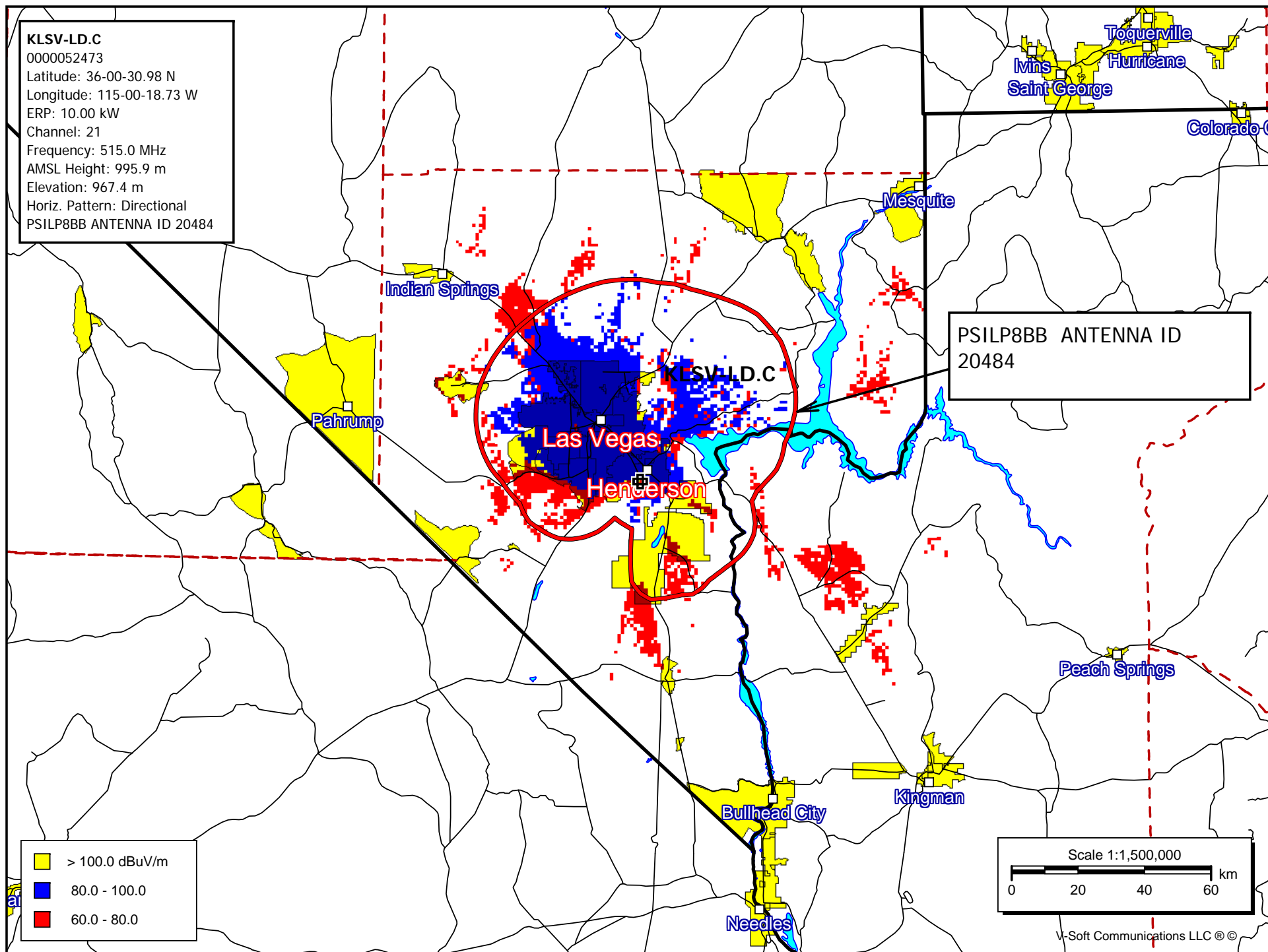
PSILP8BB ANTENNA ID
20484

 > 100.0 dBuV/m
 80.0 - 100.0
 60.0 - 80.0

Scale 1:1,500,000

0 20 40 60 km

V-Soft Communications LLC ©



Directional

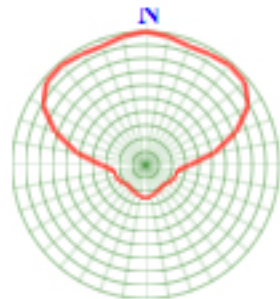
Antenna ID No.: 17790

Pattern Rotation: 0.0

Relative Field values for directional antenna

Relative field values listed here do not include any pattern rotation that may be indicated above.

0°	1.000	60°	0.890	120°	0.230	180°	0.250	240°	0.230	300°	0.890
10°	0.980	70°	0.720	130°	0.210	190°	0.240	250°	0.240	310°	0.970
20°	0.950	80°	0.520	140°	0.200	200°	0.220	260°	0.240	320°	0.980
30°	0.960	90°	0.330	150°	0.210	210°	0.210	270°	0.330	330°	0.960
40°	0.980	100°	0.240	160°	0.220	220°	0.200	280°	0.520	340°	0.950
50°	0.970	110°	0.240	170°	0.240	230°	0.210	290°	0.720	350°	0.980





Relative Field Values

[FCC](#) > [Media Bureau](#) > [MB-CDBS](#) > [CDBS Public Access](#) > [Antenna Search](#)

[Help](#) [site map](#)

Antenna Make	Model	Service	Antenna Id
PSI	PSILP8BB	DC	20484

Antenna relative field values:

0°	1	10°	0.98	20°	0.95	30°	0.96	40°	0.98	50°	0.97
60°	0.89	70°	0.72	80°	0.52	90°	0.33	100°	0.24	110°	0.24
120°	0.23	130°	0.21	140°	0.2	150°	0.21	160°	0.22	170°	0.24
180°	0.25	190°	0.24	200°	0.22	210°	0.21	220°	0.2	230°	0.21
240°	0.23	250°	0.24	260°	0.24	270°	0.33	280°	0.52	290°	0.72
300°	0.89	310°	0.97	320°	0.98	330°	0.96	340°	0.95	350°	0.98

Additional Azimuths:

[Relative Field Polar Plot](#)

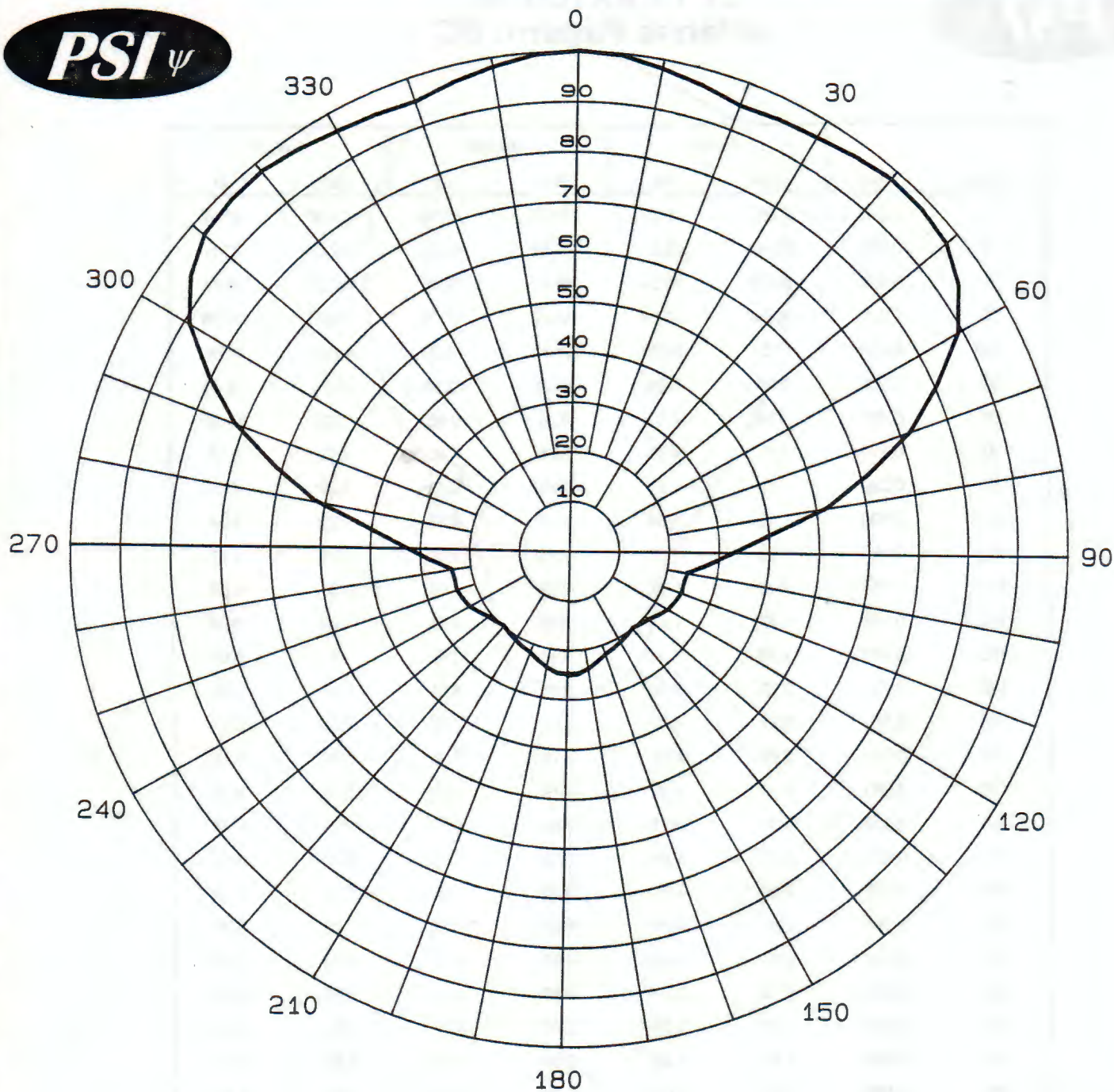
[FCC Home](#) | [Search](#) | [Updates](#) | [E-Filing](#) | [Initiatives](#) | [For Consumers](#) | [Find People](#)

Please send comments via standard mail to the Federal Communications Commission, Consumer and Governmental Affairs Bureau, 445 12th Street, S.W., Washington, D.C., 20554. Questions can also be answered by calling the FCC's National Call Center, toll free, at 1-888-Call FCC (1-888-225-5322).

Federal Communications Commission
445 12th Street SW
Washington, DC 20554
[More FCC Contact Information...](#)

Phone: 1-888-CALL-FCC (1-888-225-5322)
TTY: 1-888-TELL-FCC (1-888-835-5322)
Fax: 1-866-418-0232
E-mail: fccinfo@fcc.gov

- [Privacy Policy](#)
- [Website Policies & Notices](#)
- [Required Browser Plug-ins](#)
- [Freedom of Information Act](#)



Calculated Relative Field
Azimuth Plane Pattern
Low Power UHF Slot
Antenna Type: PSILP
Pattern Type: BB
Directivity: 2.5 (4.0 dB)
Date: 7/1/97
Rev. 0

PROPAGATION SYSTEMS, INC.
PO BOX 113
EBENSBURG, PA. 15931