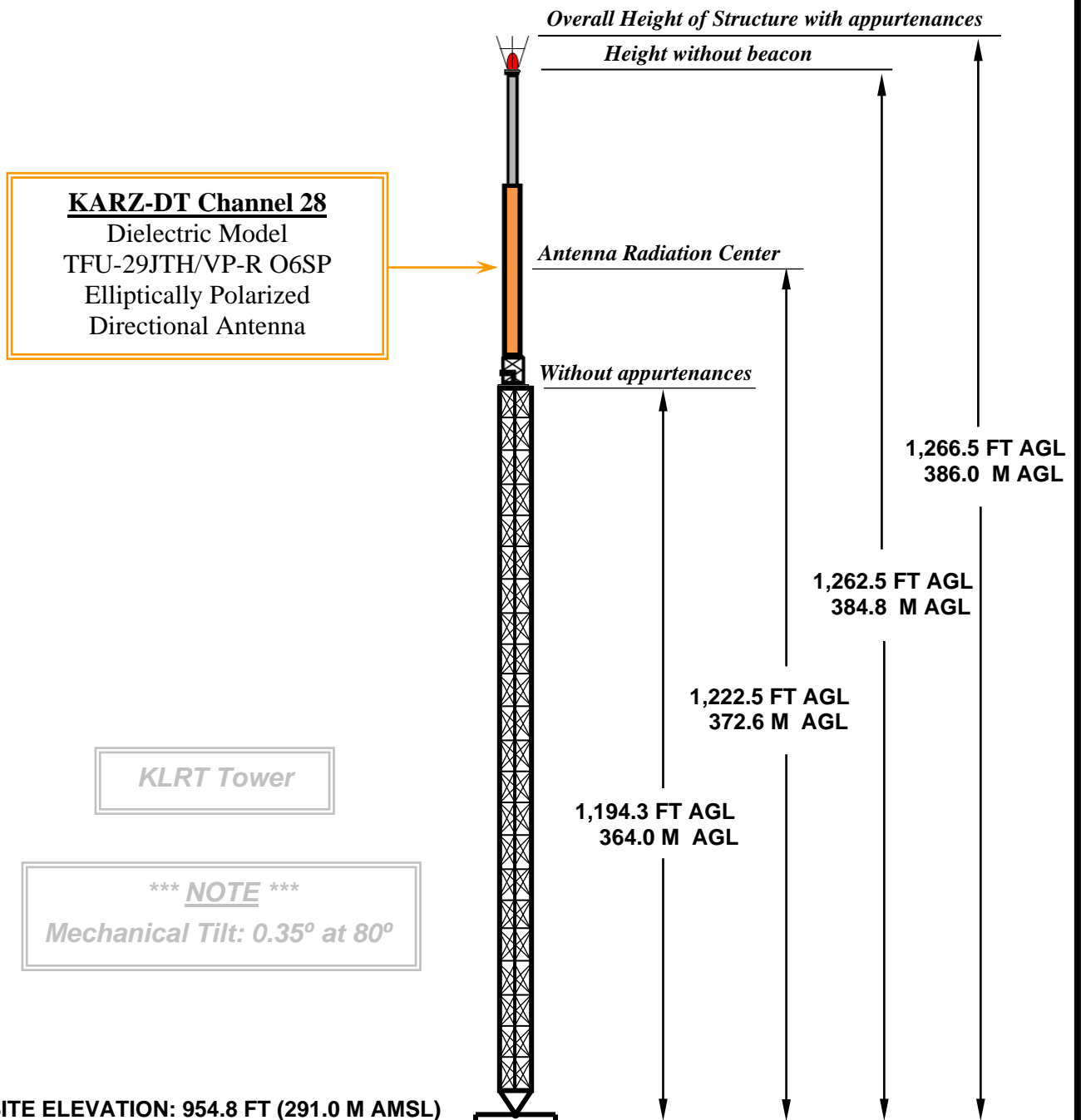


KARZ-D28 ELEVATION VIEW



OVERALL HEIGHT AGL:	386.0 M
OVERALL HEIGHT AMSL:	677.0 M
RADIATION CENTER AGL:	372.6 M
RADIATION CENTER AMSL:	663.6 M
RADIATION CENTER HAAT:	538.3 M
AVG OF ALL NON-ODD RADIALS:	125.3 M
SITE HAAT:	165.7 M

COORDINATES (NAD 83):

N. LATITUDE: 34° 47' 57"

W. LONGITUDE: 92° 29' 30"

Antenna Structure Registration Number:
1036555

NOTE: NOT TO SCALE

Kessler and Gehman Associates, Inc.



Consultants • Broadcast • Wireless
507 NW 60th Street, Suite C
Gainesville, FL 32607
www.kesslerandgehman.com

KARZ-DT CHANNEL 28

Little Rock, Arkansas

20180912

EXHIBIT 1