

## **ENGINEERING EXHIBIT**

### **Incentive Auction Channel Reassignment**

### **Amendment to Application for Modification of Digital Television Station Construction Permit**

prepared for

#### **Gray Television Licensee, LLC**

WCAV(DT) Charlottesville, VA

Facility ID 363

Ch. 32 205 kW 329 m

*Gray Television Licensee, LLC* (“Gray”) is the licensee of digital television station WCAV(DT), Channel 19, Facility ID 363, Charlottesville, VA. Reassignment of WCAV from Channel 19 to Channel 32 was specified in the *Incentive Auction Closing and Channel Reassignment Public Notice* (“CCRPN”, DA 17-317, released April 13, 2017). A Construction Permit (file# 0000025088) authorizes operation on Channel 32 at 210 kW effective radiated power (“ERP”) with a directional antenna at 329 meters height above average terrain. During the second filing window<sup>1</sup>, *Gray* submitted a minor change expansion application (LMS file# 0000034188) to increase the ERP to 1000 kW and change to a nondirectional antenna.

The WCAV expansion application was found to be mutually exclusive (“MX”) with those of WPXV-TV (Ch. 32, Norfolk VA, file# 0000034922) and WHP-TV (Ch. 32, Harrisburg PA, file# 0000033781). These MX applications were listed on the FCC’s Public Notice<sup>2</sup> of April 30, 2018, which set a 90-day period for resolution. The proposed WCAV facility would cause 1.19 percent additional interference to the proposed WPXV-TV facility, and receive 7.59 percent additional interference from WPXV-TV’s proposed facility; and the proposed WCAV facility would cause 0.94 percent additional interference to the proposed WHP-TV facility. *Gray* herein amends the WCAV application 0000034188 to specify 205 kW ERP nondirectional,

---

<sup>1</sup>Public Notice “*Incentive Auction Task Force and Media Bureau Announce the Opening of the Second Filing Window for Eligible Full Power and Class A Television Station—October 3 Through November 2, 2017*” DA 17-911, released September 20, 2017.

<sup>2</sup>Public Notice “*Incentive Auction Task Force and Media Bureau Announce a 90-Day Period from May 1 through July 30, 2018, for Broadcast Station Applicants to Resolve Their Mutual Exclusivity*” DA 18-435, released April 30, 2018.

which complies with the 0.5 percent interference limit to the WPXV-TV and WHP-TV expansion applications and all other facilities requiring protection. *Gray* is accepting the resulting interference from WPXV-TV and WHP-TV's expansion applications.

As with the current authorization, the proposed Channel 32 operation will employ a new antenna system to be top-mounted on the WCAV tower in lieu of the existing Channel 19 antenna. The overall structure elevation is less than 61 meters above ground and passes the FCC's TOWAIR program for the transmitter location, thus FCC antenna structure registration is not necessary.

The proposed antenna is an elliptically polarized Dielectric model TFU-21ETT/VP-R O4 (30 percent vertical polarization). The horizontally polarized ERP is 205 kW and the vertically polarized ERP is 61.5 kW.

Figure 1 supplies a map that demonstrates compliance with §73.625(a)(1) regarding coverage of the entire principal community. The proposed facility's predicted population exceeds 95 percent of the *CCRPN* baseline facility's population.

Interference study per FCC OET Bulletin 69<sup>3</sup> shows that the proposal complies with the 0.5 percent limit of new interference caused to pertinent nearby post-auction full service and Class A television stations and reassignments as required by §73.616. The interference study output report is provided as Table 1.

The proposed WCAV facility would receive 0.55 percent additional interference from WPXV-TV's expansion application and 1.03 percent additional interference from WHP-TV's expansion application.<sup>4</sup> *Gray* consents to the acceptance of interference received by WCAV from the pending WPXV-TV and WHP-TV expansion applications. Considering the incoming

---

<sup>3</sup>FCC Office of Engineering and Technology Bulletin number 69, *Longley-Rice Methodology for Evaluating TV Coverage and Interference*, February 6, 2004 ("OET-69"). This analysis employed the FCC's current "TVStudy" software with the default application processing template settings, 2 km cell size, and 1 km terrain profile increment. Comparisons of various results of this computer program (run on a Mac processor) to the FCC's implementation of TVStudy show excellent correlation.

<sup>4</sup>Based on the use of the cell size and terrain increments specified in those respective applications.

interference from the WPXV-TV and WHP-TV expansion application facilities, the resulting interference-free service achieved by the proposed WCAV facility is 831,477 persons (4.96 percent total incoming interference from all other stations). The proposed interference-free population is a 14.1 percent increase over the 728,470 interference-free population that would be realized by the presently authorized WCAV Channel 32 facility. A comparison map of the WCAV Channel 32 noise-limited service contours (“NLSC”, 41 dBμ) is provided as Figure 2 for the currently authorized, pending application, and amendment facilities.

The nearest FCC monitoring station is 195 km distant at Laurel, MD. This exceeds by a large margin the threshold minimum distance specified in §73.1030(c)(3) that would suggest consideration of the monitoring station. The site is not located within the areas requiring coordination with “quiet” zones specified in §73.1030(a) and (b). The site location is beyond the border areas requiring international coordination. There are no authorized AM stations within 3 kilometers of the site.

### **Human Exposure to Radiofrequency Electromagnetic Field (Environmental)**

The proposed operation was evaluated for human exposure to RF energy using the procedures outlined in the FCC’s OET Bulletin Number 65. Based on OET-65 equation (10), and considering 6 percent antenna relative field in downward elevations (pattern data shows less than 6 percent relative field at angles 35 to 90 degrees below the antenna), the calculated signal density near the tower at two meters above ground level attributable to the proposed facility is  $13.1 \mu\text{W}/\text{cm}^2$ , which is 3.4 percent of the general population/uncontrolled maximum permitted exposure limit. This is below the five percent threshold limit described in §1.1307(b) regarding sites with multiple emitters, categorically excluding the applicant from responsibility for taking any corrective action in the areas where the proposal’s contribution is less than five percent.

The general public will not be exposed to RF levels attributable to the proposal in excess of the FCC’s guidelines. RF exposure warning signs will continue to be posted. With respect to worker safety, the applicant will coordinate exposure procedures with all pertinent stations and will reduce power or cease operation as necessary to protect persons having access to the site,

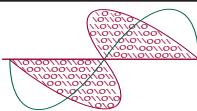
tower, or antenna from RF electromagnetic field exposure in excess of FCC guidelines. This exhibit is limited to the evaluation of exposure to RF electromagnetic field.

*List of Attachments*

Figure 1	Proposed Coverage Contours
Figure 2	Coverage Contour Comparison
Table 1	OET Bulletin 69 Interference Study
Form 2100	Saved Version of Engineering Sections from FCC Form at Time of Upload

**Chesapeake RF Consultants, LLC**

Joseph M. Davis, P.E.	July 12, 2018	
207 Old Dominion Road	Yorktown, VA 23692	703-650-9600



**Chesapeake RF Consultants, LLC**  
Radiofrequency Consulting Engineers  
Digital Television and Radio

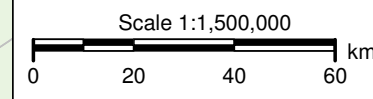
**Figure 1**  
**Proposed Coverage Contours**  
**WCAV(DT) Charlottesville, VA**  
**Facility ID 363**  
**Ch. 32 205 kW 329 m**

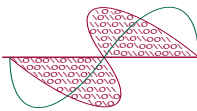
prepared for  
**Gray Television Licensee, LLC**

July, 2018

Proposed WCAV
48 dBu
(Principal Community)
41 dBu
(Noise Limited Service Contour)

Proposed Digital Coverage	Area (sq. km)	Population (2010 Census)
Within Noise Limited Service Contour	23,800.8	1,040,466
OET Bulletin 69: TVStudy		
Within noise limited contour	23,851.0	1,032,270
Not affected by terrain losses	20,508.3	874,886
Lost to all interference	1,062.8	43,409
Net Interference-Free Service	19,445.5	831,477





**Chesapeake RF Consultants, LLC**  
Radiofrequency Consulting Engineers  
Digital Television and Radio

**Figure 2**  
**Coverage Contour Comparison**  
**WCAV(DT) Charlottesville, VA**  
**Facility ID 363**  
**Ch. 32 205 kW 329 m**

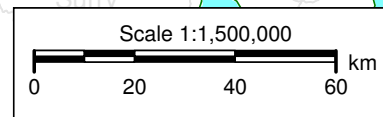
prepared for  
**Gray Television Licensee, LLC**

July, 2018

WCAV Ch. 32 Pending Application  
File # 0000034188  
1000 kW 329 m nondirectional  
41 dBu Contour (NLSC)

Proposed WCAV Ch. 32  
Amendment to File# 0000034188  
205 kW 329 m nondirectional  
41 dBu Contour (NLSC)

Authorized WCAV Ch. 32  
Constr Permit File # 0000025088  
210 kW 329 m directional  
41 dBu Contour (NLSC)



**Table 1 WCAV OET Bulletin 69 Interference Study**  
(page 1 of 20) Amendment July, 2018



tvstudy v2.2.5 (4uoc83)  
Database: localhost, Study: WCAV 205kW nonD, Model: Longley-Rice  
Start: 2018.07.11 16:18:17

Study created: 2018.07.11 16:18:17

Study build station data: LMS TV 2018-07-10

Proposal: WCAV D32 DT APP CHARLOTTESVILLE, VA  
File number: WCAV 205kW nonD  
Facility ID: 363  
Station data: User record  
Record ID: 2212  
Country: U.S.  
Zone: I

Search options:  
Baseline record excluded if station has CP

Stations potentially affected by proposal:

IX	Call	Chan	Svc	Status	City, State	File Number	Distance
Yes	WETA-TV	D31	DT	CP	WASHINGTON, DC	BLANK0000029879	162.5 km
No	WMPT	D31	DT	BL	ANNAPOLIS, MD	DTVBL65942	198.8
No	WGHP	D31	DT	CP	HIGH POINT, NC	BLANK0000034212	270.0
No	WHRO-TV	D31	DT	CP	HAMPTON-NORFOLK, VA	BLANK0000026987	218.1
No	WOAY-TV	D31	DT	CP	OAK HILL, WV	BLANK0000028013	233.9
Yes	WBOC-TV	D32	DT	CP	SALISBURY, MD	BLANK0000033790	254.4
No	WAXN-TV	D32	DT	CP	KANNAPOLIS, NC	BLANK0000034696	362.9
Yes	WRPX-TV	D32	DT	CP	ROCKY MOUNT, NC	BLANK0000034408	210.7
No	WOUB-TV	D32	DT	CP	ATHENS, OH	BLANK0000025156	351.1
No	WMVH-CD	D32	DC	CP	CHARLEROI, PA	BLANK0000027843	267.2
Yes	WHP-TV	D32	DT	CP	HARRISBURG, PA	BLANK0000027770	296.9
Yes	WHP-TV	D32	DT	APP	HARRISBURG, PA	BLANK0000033781	296.9
No	WKHU-CD	D32	DC	CP	KITTANNING, PA	BLANK0000027841	324.5
No	WMBF-TV	D32	DT	LIC	MYRTLE BEACH, SC	BLCDT20091105AAP	475.8
No	WKPT-TV	D32	DT	CP	KINGSPORT, TN	BLANK0000034339	366.8
Yes	WPXV-TV	D32	DT	APP	NORFOLK, VA	BLANK0000034922	218.1
Yes	WPXV-TV	D32	DT	CP	NORFOLK, VA	BLANK0000026979	218.1
No	WHUT-TV	D33	DT	APP	WASHINGTON, DC	BLANK0000035679	162.5
No	WHUT-TV	D33	DT	LIC	WASHINGTON, DC	BLEDT20071018AIJ	162.5
Yes	WHUT-TV	D33	DT	CP	WASHINGTON, DC	BPEDT20120627AAD	162.5
No	WUNL-TV	D33	DT	CP	WINSTON-SALEM, NC	BLANK0000034443	245.0
No	WTVZ-TV	D33	DT	LIC	NORFOLK, VA	BLCDT20090602ABA	218.1

No non-directional AM stations found within 0.8 km

No directional AM stations found within 3.2 km

Record parameters as studied:

Channel: D32  
Latitude: 37 59 4.20 N (NAD83)  
Longitude: 78 28 51.10 W  
Height AMSL: 495.0 m  
HAAT: 329.0 m  
Peak ERP: 205 kW  
Antenna: Omnidirectional  
Elev Pattn: Generic  
Elec Tilt: 1.00

40.5 dBu contour:

Azimuth	ERP	HAAT	Distance
0.0 deg	205 kW	350.2 m	89.6 km
45.0	205	262.7	79.7
90.0	205	379.3	92.0
135.0	205	365.4	91.0
180.0	205	359.2	90.4
225.0	205	315.6	85.8
270.0	205	274.8	80.9
315.0	205	325.0	86.9

Distance to Canadian border: 508.5 km

**Table 1 WCAV OET Bulletin 69 Interference Study**  
(page 2 of 20) Amendment July, 2018



Distance to Mexican border: 2184.9 km

Conditions at FCC monitoring station: Laurel MD  
Bearing: 47.2 degrees Distance: 195.0 km

Proposal is not within the West Virginia quiet zone area

Conditions at Table Mountain receiving zone:  
Bearing: 284.4 degrees Distance: 2311.7 km

Study cell size: 2.00 km  
Profile point spacing: 1.00 km

Maximum new IX to full-service and Class A: 0.50%  
Maximum new IX to LPTV: 2.00%

-----  
Interference to BLANK0000029879 CP scenario 1

Desired:	Call WETA-TV	Chan D31	Svc DT	Status CP	City, State WASHINGTON, DC	File Number BLANK0000029879	Distance		
Undesireds:	WCAV	D32	DT	BL	CHARLOTTESVILLE, VA	DTVBL363	162.5 km		
	WCAV	D32	DT	APP	CHARLOTTESVILLE, VA	WCAV 205kW nonD	162.5		
	WDCO-CD	D30	DC	BL	Woodstock, VA	DTVBL57905	54.2		
	WMPT	D31	DT	BL	ANNAPOLIS, MD	DTVBL65942	41.2		
	WYTV	D31	DT	CP	YOUNGSTOWN, OH	BLANK0000028136	383.0		
	WATM-TV	D31	DT	CP	ALTOONA, PA	BLANK0000028661	214.3		
	WTFX-TV	D31	DT	CP	PHILADELPHIA, PA	BLANK0000034830	199.0		
	WHRO-TV	D31	DT	CP	HAMPTON-NORFOLK, VA	BLANK0000026987	243.3		
	WBOC-TV	D32	DT	CP	SALISBURY, MD	BLANK0000033790	134.0		
	WHP-TV	D32	DT	CP	HARRISBURG, PA	BLANK0000027770	156.1		
Service area		Terrain-limited		IX-free, before		IX-free, after		Percent New IX	
26547.6	8,315,499	25551.9	8,258,807	11250.1	5,405,135	11250.1	5,405,135	0.00	0.00
Undesired				Total IX	Unique IX, before		Unique IX, after		
WCAV D32 DT BL	4.0			51	0.0 0				
WCAV D32 DT APP	4.0			51			0.0	0	
WDCO-CD D30 DC BL	164.2			3,022	32.0	302	32.0	302	
WMPT D31 DT BL	14174.3			2,850,374	13368.7	2,806,581	13368.7	2,806,581	
WATM-TV D31 DT CP	222.6			16,037	15.8	909	15.8	909	
WTFX-TV D31 DT CP	303.1			16,735	19.9	1,080	19.9	1,080	
WHRO-TV D31 DT CP	346.5			17,537	39.8	201	39.8	201	
WBOC-TV D32 DT CP	96.5			2,650	0.0	0	0.0	0	
WHP-TV D32 DT CP	4.0			326	0.0	0	0.0	0	

-----  
Interference to BLANK0000029879 CP scenario 2

	Call	Chan	Svc	Status	City, State	File Number	Distance		
Desired:	WETA-TV	D31	DT	CP	WASHINGTON, DC	BLANK0000029879			
Undesireds:	WCAV	D32	DT	BL	CHARLOTTESVILLE, VA	DTVBL363	162.5 km		
	WCAV	D32	DT	APP	CHARLOTTESVILLE, VA	WCAV 205kW nonD	162.5		
	WDCO-CD	D30	DC	BL	Woodstock, VA	DTVBL57905	54.2		
	WMPT	D31	DT	BL	ANNAPOLIS, MD	DTVBL65942	41.2		
	WYTV	D31	DT	CP	YOUNGSTOWN, OH	BLANK0000028136	383.0		
	WATM-TV	D31	DT	CP	ALTOONA, PA	BLANK0000028661	214.3		
	WTFX-TV	D31	DT	CP	PHILADELPHIA, PA	BLANK0000034830	199.0		
	WHRO-TV	D31	DT	CP	HAMPTON-NORFOLK, VA	BLANK0000026987	243.3		
	WBOC-TV	D32	DT	CP	SALISBURY, MD	BLANK0000033790	134.0		
	WHP-TV	D32	DT	APP	HARRISBURG, PA	BLANK0000033781	156.1		
Service area		Terrain-limited		IX-free, before		IX-free, after	Percent New IX		
26547.6	8,315,499	25551.9	8,258,807	11246.2	5,405,008	11246.2	5,405,008	0.00	0.00
Undesired				Total IX	Unique IX, before	Unique IX, after			
WCAV D32 DT BL	4.0			51	0.0	0			
WCAV D32 DT APP	4.0			51		0.0		0	

**Table 1 WCAV OET Bulletin 69 Interference Study**  
(page 3 of 20) Amendment July, 2018



WDCO-CD D30 DC BL	164.2	3,022	32.0	302	32.0	302
WMPT D31 DT BL	14174.3	2,850,374	13356.8	2,805,541	13356.8	2,805,541
WATM-TV D31 DT CP	222.6	16,037	15.8	909	15.8	909
WTFX-TV D31 DT CP	303.1	16,735	19.9	1,080	19.9	1,080
WHRO-TV D31 DT CP	346.5	17,537	39.8	201	39.8	201
WBOC-TV D32 DT CP	96.5	2,650	0.0	0	0.0	0
WHP-TV D32 DT APP	23.7	1,707	4.0	127	4.0	127

-----  
Interference to BLANK000033790 CP scenario 1

Desired:	Call	Chan	Svc	Status	City, State	File Number	Distance
	WBOC-TV	D32	DT	CP	SALISBURY, MD	BLANK0000033790	
Undesireds:	WCAV	D32	DT	BL	CHARLOTTESVILLE, VA	DTVBL363	254.4 km
	WCAV	D32	DT	APP	CHARLOTTESVILLE, VA	WCAV 205kW nonD	254.4
	WETA-TV	D31	DT	CP	WASHINGTON, DC	BLANK0000029879	134.0
	WMPT	D31	DT	BL	ANNAPOLIS, MD	DTVBL65942	100.8
	WLIW	D32	DT	CP	GARDEN CITY, NY	BLANK0000034431	282.3
	WHP-TV	D32	DT	CP	HARRISBURG, PA	BLANK0000027770	230.0
	WPXV-TV	D32	DT	APP	NORFOLK, VA	BLANK0000034922	203.1
	WHUT-TV	D33	DT	APP	WASHINGTON, DC	BLANK0000035679	134.0

Service area	Terrain-limited	IX-free, before	IX-free, after	Percent New IX
22856.8 813,888	22856.8 813,888	22343.2 805,816	22343.2 805,816	0.00 0.00

Undesired	Total IX	Unique IX, before	Unique IX, after
WCAV D32 DT BL	12.0 422	0.0 0	
WCAV D32 DT APP	12.0 422		0.0 0
WETA-TV D31 DT CP	4.0 112	0.0 0	0.0 0
WMPT D31 DT BL	151.8 1,024	147.8 912	147.8 912
WLIW D32 DT CP	4.0 112	0.0 0	0.0 0
WHP-TV D32 DT CP	16.0 521	4.0 40	4.0 40
WPXV-TV D32 DT APP	357.9 7,008	345.8 6,548	345.8 6,548

-----  
Interference to BLANK000033790 CP scenario 2

Desired:	Call	Chan	Svc	Status	City, State	File Number	Distance
	WBOC-TV	D32	DT	CP	SALISBURY, MD	BLANK0000033790	
Undesireds:	WCAV	D32	DT	BL	CHARLOTTESVILLE, VA	DTVBL363	254.4 km
	WCAV	D32	DT	APP	CHARLOTTESVILLE, VA	WCAV 205kW nonD	254.4
	WETA-TV	D31	DT	CP	WASHINGTON, DC	BLANK0000029879	134.0
	WMPT	D31	DT	BL	ANNAPOLIS, MD	DTVBL65942	100.8
	WLIW	D32	DT	CP	GARDEN CITY, NY	BLANK0000034431	282.3
	WHP-TV	D32	DT	CP	HARRISBURG, PA	BLANK0000027770	230.0
	WPXV-TV	D32	DT	APP	NORFOLK, VA	BLANK0000034922	203.1
	WHUT-TV	D33	DT	LIC	WASHINGTON, DC	BLEDT20071018AIJ	134.0

Service area	Terrain-limited	IX-free, before	IX-free, after	Percent New IX
22856.8 813,888	22856.8 813,888	22343.2 805,816	22343.2 805,816	0.00 0.00

Undesired	Total IX	Unique IX, before	Unique IX, after
WCAV D32 DT BL	12.0 422	0.0 0	
WCAV D32 DT APP	12.0 422		0.0 0
WETA-TV D31 DT CP	4.0 112	0.0 0	0.0 0
WMPT D31 DT BL	151.8 1,024	147.8 912	147.8 912
WLIW D32 DT CP	4.0 112	0.0 0	0.0 0
WHP-TV D32 DT CP	16.0 521	4.0 40	4.0 40
WPXV-TV D32 DT APP	357.9 7,008	345.8 6,548	345.8 6,548

-----  
Interference to BLANK000033790 CP scenario 3

Desired:	Call	Chan	Svc	Status	City, State	File Number	Distance
	WBOC-TV	D32	DT	CP	SALISBURY, MD	BLANK0000033790	
Undesireds:	WCAV	D32	DT	BL	CHARLOTTESVILLE, VA	DTVBL363	254.4 km
	WCAV	D32	DT	APP	CHARLOTTESVILLE, VA	WCAV 205kW nonD	254.4
	WETA-TV	D31	DT	CP	WASHINGTON, DC	BLANK0000029879	134.0
	WMPT	D31	DT	BL	ANNAPOLIS, MD	DTVBL65942	100.8
	WLIW	D32	DT	CP	GARDEN CITY, NY	BLANK0000034431	282.3

**Table 1 WCAV OET Bulletin 69 Interference Study**  
(page 4 of 20) Amendment July, 2018



WHP-TV	D32	DT	CP	HARRISBURG, PA	BLANK0000027770	230.0
WPXV-TV	D32	DT	APP	NORFOLK, VA	BLANK0000034922	203.1
WHUT-TV	D33	DT	CP	WASHINGTON, DC	BPEDT20120627AAD	134.0

Service area	Terrain-limited	IX-free, before	IX-free, after	Percent New IX
22856.8 813,888	22856.8 813,888	22343.2 805,816	22343.2 805,816	0.00 0.00

Undesired	Total IX	Unique IX, before	Unique IX, after
WCAV D32 DT BL	12.0 422	0.0 0	
WCAV D32 DT APP	12.0 422		0.0 0
WETA-TV D31 DT CP	4.0 112	0.0 0	0.0 0
WMPT D31 DT BL	151.8 1,024	147.8 912	147.8 912
WLIW D32 DT CP	4.0 112	0.0 0	0.0 0
WHP-TV D32 DT CP	16.0 521	4.0 40	4.0 40
WPXV-TV D32 DT APP	357.9 7,008	345.8 6,548	345.8 6,548
WHUT-TV D33 DT CP	8.0 331	0.0 0	0.0 0

-----  
Interference to BLANK0000033790 CP scenario 4

Desired:	Call	Chan	Svc	Status	City, State	File Number	Distance
	WBOC-TV	D32	DT	CP	SALISBURY, MD	BLANK0000033790	
Undesireds:	WCAV	D32	DT	BL	CHARLOTTESVILLE, VA	DTVBL363	254.4 km
	WCAV	D32	DT	APP	CHARLOTTESVILLE, VA	WCAV 205kW nonD	254.4
	WETA-TV	D31	DT	CP	WASHINGTON, DC	BLANK0000029879	134.0
	WMPT	D31	DT	BL	ANNAPOLIS, MD	DTVBL65942	100.8
	WLIW	D32	DT	CP	GARDEN CITY, NY	BLANK0000034431	282.3
	WHP-TV	D32	DT	CP	HARRISBURG, PA	BLANK0000027770	230.0
	WPXV-TV	D32	DT	CP	NORFOLK, VA	BLANK0000026979	203.1
	WHUT-TV	D33	DT	APP	WASHINGTON, DC	BLANK0000035679	134.0

Service area	Terrain-limited	IX-free, before	IX-free, after	Percent New IX
22856.8 813,888	22856.8 813,888	22538.0 811,097	22538.0 811,097	0.00 0.00

Undesired	Total IX	Unique IX, before	Unique IX, after
WCAV D32 DT BL	12.0 422	0.0 0	
WCAV D32 DT APP	12.0 422		0.0 0
WETA-TV D31 DT CP	4.0 112	0.0 0	0.0 0
WMPT D31 DT BL	151.8 1,024	147.8 912	147.8 912
WLIW D32 DT CP	4.0 112	0.0 0	0.0 0
WHP-TV D32 DT CP	16.0 521	8.0 190	8.0 190
WPXV-TV D32 DT CP	159.0 1,577	151.0 1,267	151.0 1,267

-----  
Interference to BLANK0000033790 CP scenario 5

Desired:	Call	Chan	Svc	Status	City, State	File Number	Distance
	WBOC-TV	D32	DT	CP	SALISBURY, MD	BLANK0000033790	
Undesireds:	WCAV	D32	DT	BL	CHARLOTTESVILLE, VA	DTVBL363	254.4 km
	WCAV	D32	DT	APP	CHARLOTTESVILLE, VA	WCAV 205kW nonD	254.4
	WETA-TV	D31	DT	CP	WASHINGTON, DC	BLANK0000029879	134.0
	WMPT	D31	DT	BL	ANNAPOLIS, MD	DTVBL65942	100.8
	WLIW	D32	DT	CP	GARDEN CITY, NY	BLANK0000034431	282.3
	WHP-TV	D32	DT	CP	HARRISBURG, PA	BLANK0000027770	230.0
	WPXV-TV	D32	DT	CP	NORFOLK, VA	BLANK0000026979	203.1
	WHUT-TV	D33	DT	LIC	WASHINGTON, DC	BLEDT20071018AIJ	134.0

Service area	Terrain-limited	IX-free, before	IX-free, after	Percent New IX
22856.8 813,888	22856.8 813,888	22538.0 811,097	22538.0 811,097	0.00 0.00

Undesired	Total IX	Unique IX, before	Unique IX, after
WCAV D32 DT BL	12.0 422	0.0 0	
WCAV D32 DT APP	12.0 422		0.0 0
WETA-TV D31 DT CP	4.0 112	0.0 0	0.0 0
WMPT D31 DT BL	151.8 1,024	147.8 912	147.8 912
WLIW D32 DT CP	4.0 112	0.0 0	0.0 0
WHP-TV D32 DT CP	16.0 521	8.0 190	8.0 190
WPXV-TV D32 DT CP	159.0 1,577	151.0 1,267	151.0 1,267

-----  
Interference to BLANK0000033790 CP scenario 6

**Table 1 WCAV OET Bulletin 69 Interference Study**  
(page 5 of 20) Amendment July, 2018



	Call	Chan	Svc	Status	City, State	File Number	Distance
Desired:	WBOC-TV	D32	DT	CP	SALISBURY, MD	BLANK0000033790	
Undesireds:	WCAV	D32	DT	BL	CHARLOTTESVILLE, VA	DTVBL363	254.4 km
	WCAV	D32	DT	APP	CHARLOTTESVILLE, VA	WCAV 205kW nonD	254.4
	WETA-TV	D31	DT	CP	WASHINGTON, DC	BLANK0000029879	134.0
	WMPT	D31	DT	BL	ANNAPOLIS, MD	DTVBL65942	100.8
	WLIW	D32	DT	CP	GARDEN CITY, NY	BLANK0000034431	282.3
	WHP-TV	D32	DT	CP	HARRISBURG, PA	BLANK0000027770	230.0
	WPXV-TV	D32	DT	CP	NORFOLK, VA	BLANK0000026979	203.1
	WHUT-TV	D33	DT	CP	WASHINGTON, DC	BPEDT20120627AAD	134.0

Service area	Terrain-limited	IX-free, before	IX-free, after	Percent New IX
22856.8 813,888	22856.8 813,888	22538.0 811,097	22538.0 811,097	0.00 0.00

Undesired	Total IX	Unique IX, before	Unique IX, after
WCAV D32 DT BL	12.0 422	0.0 0	
WCAV D32 DT APP	12.0 422		0.0 0
WETA-TV D31 DT CP	4.0 112	0.0 0	0.0 0
WMPT D31 DT BL	151.8 1,024	147.8 912	147.8 912
WLIW D32 DT CP	4.0 112	0.0 0	0.0 0
WHP-TV D32 DT CP	16.0 521	8.0 190	8.0 190
WPXV-TV D32 DT CP	159.0 1,577	151.0 1,267	151.0 1,267
WHUT-TV D33 DT CP	8.0 331	0.0 0	0.0 0

-----  
Interference to BLANK0000033790 CP scenario 7

	Call	Chan	Svc	Status	City, State	File Number	Distance
Desired:	WBOC-TV	D32	DT	CP	SALISBURY, MD	BLANK0000033790	
Undesireds:	WCAV	D32	DT	BL	CHARLOTTESVILLE, VA	DTVBL363	254.4 km
	WCAV	D32	DT	APP	CHARLOTTESVILLE, VA	WCAV 205kW nonD	254.4
	WETA-TV	D31	DT	CP	WASHINGTON, DC	BLANK0000029879	134.0
	WMPT	D31	DT	BL	ANNAPOLIS, MD	DTVBL65942	100.8
	WLIW	D32	DT	CP	GARDEN CITY, NY	BLANK0000034431	282.3
	WHP-TV	D32	DT	APP	HARRISBURG, PA	BLANK0000033781	230.0
	WPXV-TV	D32	DT	APP	NORFOLK, VA	BLANK0000034922	203.1
	WHUT-TV	D33	DT	APP	WASHINGTON, DC	BLANK0000035679	134.0

Service area	Terrain-limited	IX-free, before	IX-free, after	Percent New IX
22856.8 813,888	22856.8 813,888	22319.3 805,112	22319.3 805,112	0.00 0.00

Undesired	Total IX	Unique IX, before	Unique IX, after
WCAV D32 DT BL	12.0 422	0.0 0	
WCAV D32 DT APP	12.0 422		0.0 0
WETA-TV D31 DT CP	4.0 112	0.0 0	0.0 0
WMPT D31 DT BL	151.8 1,024	143.8 867	143.8 867
WLIW D32 DT CP	4.0 112	0.0 0	0.0 0
WHP-TV D32 DT APP	47.9 1,361	27.9 744	27.9 744
WPXV-TV D32 DT APP	357.9 7,008	345.8 6,548	345.8 6,548

-----  
Interference to BLANK0000033790 CP scenario 8

	Call	Chan	Svc	Status	City, State	File Number	Distance
Desired:	WBOC-TV	D32	DT	CP	SALISBURY, MD	BLANK0000033790	
Undesireds:	WCAV	D32	DT	BL	CHARLOTTESVILLE, VA	DTVBL363	254.4 km
	WCAV	D32	DT	APP	CHARLOTTESVILLE, VA	WCAV 205kW nonD	254.4
	WETA-TV	D31	DT	CP	WASHINGTON, DC	BLANK0000029879	134.0
	WMPT	D31	DT	BL	ANNAPOLIS, MD	DTVBL65942	100.8
	WLIW	D32	DT	CP	GARDEN CITY, NY	BLANK0000034431	282.3
	WHP-TV	D32	DT	APP	HARRISBURG, PA	BLANK0000033781	230.0
	WPXV-TV	D32	DT	APP	NORFOLK, VA	BLANK0000034922	203.1
	WHUT-TV	D33	DT	LIC	WASHINGTON, DC	BLEDT20071018AIJ	134.0

Service area	Terrain-limited	IX-free, before	IX-free, after	Percent New IX
22856.8 813,888	22856.8 813,888	22319.3 805,112	22319.3 805,112	0.00 0.00

Undesired	Total IX	Unique IX, before	Unique IX, after
WCAV D32 DT BL	12.0 422	0.0 0	

**Table 1 WCAV OET Bulletin 69 Interference Study**  
(page 6 of 20) Amendment July, 2018



WCAV D32 DT APP	12.0	422			0.0	0
WETA-TV D31 DT CP	4.0	112	0.0	0	0.0	0
WMPT D31 DT BL	151.8	1,024	143.8	867	143.8	867
WLIW D32 DT CP	4.0	112	0.0	0	0.0	0
WHP-TV D32 DT APP	47.9	1,361	27.9	744	27.9	744
WPXV-TV D32 DT APP	357.9	7,008	345.8	6,548	345.8	6,548

-----  
Interference to BLANK0000033790 CP scenario 9

Desired:	Call	Chan	Svc	Status	City, State	File Number	Distance
	WBOC-TV	D32	DT	CP	SALISBURY, MD	BLANK0000033790	
Undesireds:	WCAV	D32	DT	BL	CHARLOTTESVILLE, VA	DTVBL363	254.4 km
	WCAV	D32	DT	APP	CHARLOTTESVILLE, VA	WCAV 205kW nonD	254.4
	WETA-TV	D31	DT	CP	WASHINGTON, DC	BLANK0000029879	134.0
	WMPT	D31	DT	BL	ANNAPOLIS, MD	DTVBL65942	100.8
	WLIW	D32	DT	CP	GARDEN CITY, NY	BLANK0000034431	282.3
	WHP-TV	D32	DT	APP	HARRISBURG, PA	BLANK0000033781	230.0
	WPXV-TV	D32	DT	APP	NORFOLK, VA	BLANK0000034922	203.1
	WHUT-TV	D33	DT	CP	WASHINGTON, DC	BPEDT20120627AAD	134.0

Service area	Terrain-limited	IX-free, before	IX-free, after	Percent New IX
22856.8 813,888	22856.8 813,888	22319.3 805,112	22319.3 805,112	0.00 0.00

Undesired	Total IX	Unique IX, before	Unique IX, after
WCAV D32 DT BL	12.0 422	0.0 0	
WCAV D32 DT APP	12.0 422	0.0 0	0
WETA-TV D31 DT CP	4.0 112	0.0 0	0
WMPT D31 DT BL	151.8 1,024	143.8 867	143.8 867
WLIW D32 DT CP	4.0 112	0.0 0	0
WHP-TV D32 DT APP	47.9 1,361	27.9 744	27.9 744
WPXV-TV D32 DT APP	357.9 7,008	345.8 6,548	345.8 6,548
WHUT-TV D33 DT CP	8.0 331	0.0 0	0.0 0

-----  
Interference to BLANK0000033790 CP scenario 10

Desired:	Call	Chan	Svc	Status	City, State	File Number	Distance
	WBOC-TV	D32	DT	CP	SALISBURY, MD	BLANK0000033790	
Undesireds:	WCAV	D32	DT	BL	CHARLOTTESVILLE, VA	DTVBL363	254.4 km
	WCAV	D32	DT	APP	CHARLOTTESVILLE, VA	WCAV 205kW nonD	254.4
	WETA-TV	D31	DT	CP	WASHINGTON, DC	BLANK0000029879	134.0
	WMPT	D31	DT	BL	ANNAPOLIS, MD	DTVBL65942	100.8
	WLIW	D32	DT	CP	GARDEN CITY, NY	BLANK0000034431	282.3
	WHP-TV	D32	DT	APP	HARRISBURG, PA	BLANK0000033781	230.0
	WPXV-TV	D32	DT	CP	NORFOLK, VA	BLANK0000026979	203.1
	WHUT-TV	D33	DT	APP	WASHINGTON, DC	BLANK0000035679	134.0

Service area	Terrain-limited	IX-free, before	IX-free, after	Percent New IX
22856.8 813,888	22856.8 813,888	22514.1 810,393	22514.1 810,393	0.00 0.00

Undesired	Total IX	Unique IX, before	Unique IX, after
WCAV D32 DT BL	12.0 422	0.0 0	
WCAV D32 DT APP	12.0 422	0.0 0	0
WETA-TV D31 DT CP	4.0 112	0.0 0	0
WMPT D31 DT BL	151.8 1,024	143.8 867	143.8 867
WLIW D32 DT CP	4.0 112	0.0 0	0
WHP-TV D32 DT APP	47.9 1,361	31.8 894	31.8 894
WPXV-TV D32 DT CP	159.0 1,577	151.0 1,267	151.0 1,267

-----  
Interference to BLANK0000033790 CP scenario 11

Desired:	Call	Chan	Svc	Status	City, State	File Number	Distance
	WBOC-TV	D32	DT	CP	SALISBURY, MD	BLANK0000033790	
Undesireds:	WCAV	D32	DT	BL	CHARLOTTESVILLE, VA	DTVBL363	254.4 km
	WCAV	D32	DT	APP	CHARLOTTESVILLE, VA	WCAV 205kW nonD	254.4
	WETA-TV	D31	DT	CP	WASHINGTON, DC	BLANK0000029879	134.0
	WMPT	D31	DT	BL	ANNAPOLIS, MD	DTVBL65942	100.8
	WLIW	D32	DT	CP	GARDEN CITY, NY	BLANK0000034431	282.3

**Table 1 WCAV OET Bulletin 69 Interference Study**  
(page 7 of 20) Amendment July, 2018



WHP-TV	D32	DT	APP	HARRISBURG, PA	BLANK0000033781	230.0
WPXV-TV	D32	DT	CP	NORFOLK, VA	BLANK0000026979	203.1
WHUT-TV	D33	DT	LIC	WASHINGTON, DC	BLEDT20071018AIJ	134.0

Service area	Terrain-limited	IX-free, before	IX-free, after	Percent New IX
22856.8 813,888	22856.8 813,888	22514.1 810,393	22514.1 810,393	0.00 0.00

Undesired	Total IX	Unique IX, before	Unique IX, after
WCAV D32 DT BL	12.0 422	0.0 0	
WCAV D32 DT APP	12.0 422		0.0 0
WETA-TV D31 DT CP	4.0 112	0.0 0	0.0 0
WMPT D31 DT BL	151.8 1,024	143.8 867	143.8 867
WLIW D32 DT CP	4.0 112	0.0 0	0.0 0
WHP-TV D32 DT APP	47.9 1,361	31.8 894	31.8 894
WPXV-TV D32 DT CP	159.0 1,577	151.0 1,267	151.0 1,267

Interference to BLANK0000033790 CP scenario 12

Desired:	Call	Chan	Svc	Status	City, State	File Number	Distance
	WBOC-TV	D32	DT	CP	SALISBURY, MD	BLANK0000033790	
Undesireds:	WCAV	D32	DT	BL	CHARLOTTESVILLE, VA	DTVBL363	254.4 km
	WCAV	D32	DT	APP	CHARLOTTESVILLE, VA	WCAV 205kW nonD	254.4
	WETA-TV	D31	DT	CP	WASHINGTON, DC	BLANK0000029879	134.0
	WMPT	D31	DT	BL	ANNAPOLIS, MD	DTVBL65942	100.8
	WLIW	D32	DT	CP	GARDEN CITY, NY	BLANK0000034431	282.3
	WHP-TV	D32	DT	APP	HARRISBURG, PA	BLANK0000033781	230.0
	WPXV-TV	D32	DT	CP	NORFOLK, VA	BLANK0000026979	203.1
	WHUT-TV	D33	DT	CP	WASHINGTON, DC	BPEDT20120627AAD	134.0

Service area	Terrain-limited	IX-free, before	IX-free, after	Percent New IX
22856.8 813,888	22856.8 813,888	22514.1 810,393	22514.1 810,393	0.00 0.00

Undesired	Total IX	Unique IX, before	Unique IX, after
WCAV D32 DT BL	12.0 422	0.0 0	
WCAV D32 DT APP	12.0 422		0.0 0
WETA-TV D31 DT CP	4.0 112	0.0 0	0.0 0
WMPT D31 DT BL	151.8 1,024	143.8 867	143.8 867
WLIW D32 DT CP	4.0 112	0.0 0	0.0 0
WHP-TV D32 DT APP	47.9 1,361	31.8 894	31.8 894
WPXV-TV D32 DT CP	159.0 1,577	151.0 1,267	151.0 1,267
WHUT-TV D33 DT CP	8.0 331	0.0 0	0.0 0

Interference to BLANK0000034408 CP scenario 1

Desired:	Call	Chan	Svc	Status	City, State	File Number	Distance
	WRPX-TV	D32	DT	CP	ROCKY MOUNT, NC	BLANK0000034408	
Undesireds:	WCAV	D32	DT	BL	CHARLOTTESVILLE, VA	DTVBL363	210.7 km
	WCAV	D32	DT	APP	CHARLOTTESVILLE, VA	WCAV 205kW nonD	210.7
	WGHP	D31	DT	CP	HIGH POINT, NC	BLANK0000034212	151.9
	WAXN-TV	D32	DT	CP	KANNAPOLIS, NC	BLANK0000034696	247.3
	WMBF-TV	D32	DT	LIC	MYRTLE BEACH, SC	BLCDT20091105AAP	275.7
	WPXV-TV	D32	DT	APP	NORFOLK, VA	BLANK0000034922	170.1
	WUNL-TV	D33	DT	CP	WINSTON-SALEM, NC	BLANK0000034443	197.8

Service area	Terrain-limited	IX-free, before	IX-free, after	Percent New IX
27781.1 2,436,273	27693.0 2,434,021	26395.8 2,398,326	26375.9 2,397,951	0.08 0.02

Undesired	Total IX	Unique IX, before	Unique IX, after
WCAV D32 DT BL	355.2 5,834	275.3 3,378	
WCAV D32 DT APP	371.1 6,153		295.2 3,753
WGHP D31 DT CP	240.7 18,182	204.6 14,423	204.6 14,423
WAXN-TV D32 DT CP	16.1 183	4.0 28	4.0 28
WMBF-TV D32 DT LIC	8.1 151	0.0 0	0.0 0
WPXV-TV D32 DT APP	801.3 17,338	713.4 12,646	717.4 12,702
WUNL-TV D33 DT CP	4.0 127	4.0 127	4.0 127

Interference to BLANK0000034408 CP scenario 2

**Table 1 WCAV OET Bulletin 69 Interference Study**  
(page 8 of 20) Amendment July, 2018



Desired:	Call	Chan	Svc	Status	City, State	File Number	Distance
	WRPX-TV	D32	DT	CP	ROCKY MOUNT, NC	BLANK0000034408	
Undesireds:	WCAV	D32	DT	BL	CHARLOTTESVILLE, VA	DTVBL363	210.7 km
	WCAV	D32	DT	APP	CHARLOTTESVILLE, VA	WCAV 205kW nonD	210.7
	WGHP	D31	DT	CP	HIGH POINT, NC	BLANK0000034212	151.9
	WAXN-TV	D32	DT	CP	KANNAPOLIS, NC	BLANK0000034696	247.3
	WMBF-TV	D32	DT	LIC	MYRTLE BEACH, SC	BLCDT20091105AAP	275.7
	WPXV-TV	D32	DT	CP	NORFOLK, VA	BLANK0000026979	170.1
	WUNL-TV	D33	DT	CP	WINSTON-SALEM, NC	BLANK0000034443	197.8
<hr/>							
	Service area	Terrain-limited		IX-free, before		IX-free, after	Percent New IX
27781.1	2,436,273	27693.0	2,434,021	26607.2	2,402,693	26591.3 2,402,374	0.06 0.01

Undesired	Total IX	Unique IX, before	Unique IX, after
WCAV D32 DT BL	355.2 5,834	303.1 4,418	
WCAV D32 DT APP	371.1 6,153		319.1 4,737
WGHP D31 DT CP	240.7 18,182	220.6 17,060	220.6 17,060
WAXN-TV D32 DT CP	16.1 183	4.0 28	4.0 28
WMBF-TV D32 DT LIC	8.1 151	0.0 0	0.0 0
WPXV-TV D32 DT CP	546.0 9,294	502.0 8,279	502.0 8,279
WUNL-TV D33 DT CP	4.0 127	4.0 127	4.0 127

-----  
Interference to BLANK0000027770 CP scenario 1

Desired:	Call	Chan	Svc	Status	City, State	File Number	Distance
	WHP-TV	D32	DT	CP	HARRISBURG, PA	BLANK0000027770	
Undesireds:	WCAV	D32	DT	BL	CHARLOTTESVILLE, VA	DTVBL363	296.9 km
	WCAV	D32	DT	APP	CHARLOTTESVILLE, VA	WCAV 205kW nonD	296.9
	WETA-TV	D31	DT	CP	WASHINGTON, DC	BLANK0000029879	156.1
	WMPT	D31	DT	BL	ANNAPOLIS, MD	DTVBL65942	150.1
	WATM-TV	D31	DT	CP	ALTOONA, PA	BLANK0000028661	135.5
	WTFX-TV	D31	DT	CP	PHILADELPHIA, PA	BLANK0000034830	142.5
	WBOC-TV	D32	DT	CP	SALISBURY, MD	BLANK0000033790	230.0
	WNLO	D32	DT	APP	BUFFALO, NY	BLANK0000036123	343.4
	WLIW	D32	DT	CP	GARDEN CITY, NY	BLANK0000034431	244.7
	WPXV-TV	D32	DT	APP	NORFOLK, VA	BLANK0000034922	394.4
	WHUT-TV	D33	DT	APP	WASHINGTON, DC	BLANK0000035679	156.1
	WPSG	D33	DT	CP	PHILADELPHIA, PA	BLANK0000034323	142.2
	WQPX-TV	D33	DT	CP	SCRANTON, PA	BLANK0000034918	154.6
<hr/>							
	Service area	Terrain-limited		IX-free, before		IX-free, after	Percent New IX
27891.2	3,046,000	24602.2	2,774,275	23398.2	2,639,865	23390.2 2,638,548	0.03 0.05

Undesired	Total IX	Unique IX, before	Unique IX, after
WCAV D32 DT BL	47.7 9,598	11.9 2,653	
WCAV D32 DT APP	59.7 10,999		19.9 3,970
WETA-TV D31 DT CP	23.8 2,819	0.0 0	0.0 0
WMPT D31 DT BL	51.5 15,683	11.9 2,175	11.9 2,175
WATM-TV D31 DT CP	43.9 1,151	43.9 1,151	43.9 1,151
WTFX-TV D31 DT CP	112.8 15,879	4.0 244	4.0 244
WBOC-TV D32 DT CP	951.5 97,300	735.2 58,586	731.2 58,502
WNLO D32 DT APP	7.9 0	7.9 0	7.9 0
WLIW D32 DT CP	80.4 6,064	28.1 1,371	28.1 1,371
WHUT-TV D33 DT APP	4.0 690	0.0 0	0.0 0
WPSG D33 DT CP	229.6 41,998	76.5 20,535	76.5 20,535
WQPX-TV D33 DT CP	7.9 242	7.9 242	7.9 242

-----  
Interference to BLANK0000027770 CP scenario 2

Desired:	Call	Chan	Svc	Status	City, State	File Number	Distance
	WHP-TV	D32	DT	CP	HARRISBURG, PA	BLANK0000027770	
Undesireds:	WCAV	D32	DT	BL	CHARLOTTESVILLE, VA	DTVBL363	296.9 km
	WCAV	D32	DT	APP	CHARLOTTESVILLE, VA	WCAV 205kW nonD	296.9
	WETA-TV	D31	DT	CP	WASHINGTON, DC	BLANK0000029879	156.1
	WMPT	D31	DT	BL	ANNAPOLIS, MD	DTVBL65942	150.1
	WATM-TV	D31	DT	CP	ALTOONA, PA	BLANK0000028661	135.5
	WTFX-TV	D31	DT	CP	PHILADELPHIA, PA	BLANK0000034830	142.5
	WBOC-TV	D32	DT	CP	SALISBURY, MD	BLANK0000033790	230.0

**Table 1 WCAV OET Bulletin 69 Interference Study**  
(page 9 of 20) Amendment July, 2018



WNLO	D32	DT	APP	BUFFALO, NY	BLANK0000036123	343.4
WLIW	D32	DT	CP	GARDEN CITY, NY	BLANK0000034431	244.7
WPXV-TV	D32	DT	APP	NORFOLK, VA	BLANK0000034922	394.4
WHUT-TV	D33	DT	LIC	WASHINGTON, DC	BLEDT20071018AIJ	156.1
WPSG	D33	DT	CP	PHILADELPHIA, PA	BLANK0000034323	142.2
WQPX-TV	D33	DT	CP	SCRANTON, PA	BLANK0000034918	154.6

Service area	Terrain-limited	IX-free, before	IX-free, after	Percent New IX
27891.2 3,046,000	24602.2 2,774,275	23398.2 2,639,865	23390.2 2,638,548	0.03 0.05

Undesired	Total IX	Unique IX, before	Unique IX, after
WCAV D32 DT BL	47.7 9,598	11.9 2,653	
WCAV D32 DT APP	59.7 10,999		19.9 3,970
WETA-TV D31 DT CP	23.8 2,819	0.0 0	0.0 0
WMPT D31 DT BL	51.5 15,683	11.9 2,175	11.9 2,175
WATM-TV D31 DT CP	43.9 1,151	43.9 1,151	43.9 1,151
WTFX-TV D31 DT CP	112.8 15,879	4.0 244	4.0 244
WBOC-TV D32 DT CP	951.5 97,300	735.2 58,586	731.2 58,502
WNLO D32 DT APP	7.9 0	7.9 0	7.9 0
WLIW D32 DT CP	80.4 6,064	28.1 1,371	28.1 1,371
WPSG D33 DT CP	229.6 41,998	76.5 20,535	76.5 20,535
WQPX-TV D33 DT CP	7.9 242	7.9 242	7.9 242

-----  
Interference to BLANK0000027770 CP scenario 3

Desired:	Call	Chan	Svc	Status	City, State	File Number	Distance
	WHP-TV	D32	DT	CP	HARRISBURG, PA	BLANK0000027770	
Undesireds:	WCAV	D32	DT	BL	CHARLOTTESVILLE, VA	DTVBL363	296.9 km
	WCAV	D32	DT	APP	CHARLOTTESVILLE, VA	WCAV 205kW nonD	296.9
	WETA-TV	D31	DT	CP	WASHINGTON, DC	BLANK0000029879	156.1
	WMPT	D31	DT	BL	ANNAPOLIS, MD	DTVBL65942	150.1
	WATM-TV	D31	DT	CP	ALTOONA, PA	BLANK0000028661	135.5
	WTFX-TV	D31	DT	CP	PHILADELPHIA, PA	BLANK0000034830	142.5
	WBOC-TV	D32	DT	CP	SALISBURY, MD	BLANK0000033790	230.0
	WNLO	D32	DT	APP	BUFFALO, NY	BLANK0000036123	343.4
	WLIW	D32	DT	CP	GARDEN CITY, NY	BLANK0000034431	244.7
	WPXV-TV	D32	DT	APP	NORFOLK, VA	BLANK0000034922	394.4
	WHUT-TV	D33	DT	CP	WASHINGTON, DC	BPEDT20120627AAD	156.1
	WPSG	D33	DT	CP	PHILADELPHIA, PA	BLANK0000034323	142.2
	WQPX-TV	D33	DT	CP	SCRANTON, PA	BLANK0000034918	154.6

Service area	Terrain-limited	IX-free, before	IX-free, after	Percent New IX
27891.2 3,046,000	24602.2 2,774,275	23398.2 2,639,865	23390.2 2,638,548	0.03 0.05

Undesired	Total IX	Unique IX, before	Unique IX, after
WCAV D32 DT BL	47.7 9,598	11.9 2,653	
WCAV D32 DT APP	59.7 10,999		19.9 3,970
WETA-TV D31 DT CP	23.8 2,819	0.0 0	0.0 0
WMPT D31 DT BL	51.5 15,683	11.9 2,175	11.9 2,175
WATM-TV D31 DT CP	43.9 1,151	43.9 1,151	43.9 1,151
WTFX-TV D31 DT CP	112.8 15,879	4.0 244	4.0 244
WBOC-TV D32 DT CP	951.5 97,300	727.3 57,435	723.3 57,351
WNLO D32 DT APP	7.9 0	7.9 0	7.9 0
WLIW D32 DT CP	80.4 6,064	28.1 1,371	28.1 1,371
WHUT-TV D33 DT CP	31.7 3,970	0.0 0	0.0 0
WPSG D33 DT CP	229.6 41,998	76.5 20,535	76.5 20,535
WQPX-TV D33 DT CP	7.9 242	7.9 242	7.9 242

-----  
Interference to BLANK0000027770 CP scenario 4

Desired:	Call	Chan	Svc	Status	City, State	File Number	Distance
	WHP-TV	D32	DT	CP	HARRISBURG, PA	BLANK0000027770	
Undesireds:	WCAV	D32	DT	BL	CHARLOTTESVILLE, VA	DTVBL363	296.9 km
	WCAV	D32	DT	APP	CHARLOTTESVILLE, VA	WCAV 205kW nonD	296.9
	WETA-TV	D31	DT	CP	WASHINGTON, DC	BLANK0000029879	156.1
	WMPT	D31	DT	BL	ANNAPOLIS, MD	DTVBL65942	150.1
	WATM-TV	D31	DT	CP	ALTOONA, PA	BLANK0000028661	135.5
	WTFX-TV	D31	DT	CP	PHILADELPHIA, PA	BLANK0000034830	142.5
	WBOC-TV	D32	DT	CP	SALISBURY, MD	BLANK0000033790	230.0

**Table 1 WCAV OET Bulletin 69 Interference Study**  
(page 10 of 20) Amendment July, 2018



WNLO	D32	DT	LIC	BUFFALO, NY	BLANK0000053502	343.6
WLIW	D32	DT	CP	GARDEN CITY, NY	BLANK0000034431	244.7
WPXV-TV	D32	DT	APP	NORFOLK, VA	BLANK0000034922	394.4
WHUT-TV	D33	DT	APP	WASHINGTON, DC	BLANK0000035679	156.1
WPSG	D33	DT	CP	PHILADELPHIA, PA	BLANK0000034323	142.2
WQPX-TV	D33	DT	CP	SCRANTON, PA	BLANK0000034918	154.6

Service area	Terrain-limited	IX-free, before	IX-free, after	Percent New IX
27891.2 3,046,000	24602.2 2,774,275	23398.2 2,639,716	23390.2 2,638,399	0.03 0.05

Undesired	Total IX	Unique IX, before	Unique IX, after
WCAV D32 DT BL	47.7 9,598	11.9 2,653	
WCAV D32 DT APP	59.7 10,999		19.9 3,970
WETA-TV D31 DT CP	23.8 2,819	0.0 0	0.0 0
WMPT D31 DT BL	51.5 15,683	11.9 2,175	11.9 2,175
WATM-TV D31 DT CP	43.9 1,151	43.9 1,151	43.9 1,151
WTFX-TV D31 DT CP	112.8 15,879	4.0 244	4.0 244
WBOC-TV D32 DT CP	951.5 97,300	735.2 58,586	731.2 58,502
WNLO D32 DT LIC	7.9 149	7.9 149	7.9 149
WLIW D32 DT CP	80.4 6,064	28.1 1,371	28.1 1,371
WHUT-TV D33 DT APP	4.0 690	0.0 0	0.0 0
WPSG D33 DT CP	229.6 41,998	76.5 20,535	76.5 20,535
WQPX-TV D33 DT CP	7.9 242	7.9 242	7.9 242

-----  
Interference to BLANK0000027770 CP scenario 5

Desired:	Call	Chan	Svc	Status	City, State	File Number	Distance
	WHP-TV	D32	DT	CP	HARRISBURG, PA	BLANK0000027770	
Undesireds:	WCAV	D32	DT	BL	CHARLOTTESVILLE, VA	DTVBL363	296.9 km
	WCAV	D32	DT	APP	CHARLOTTESVILLE, VA	WCAV 205kW nonD	296.9
	WETA-TV	D31	DT	CP	WASHINGTON, DC	BLANK0000029879	156.1
	WMPT	D31	DT	BL	ANNAPOLIS, MD	DTVBL65942	150.1
	WATM-TV	D31	DT	CP	ALTOONA, PA	BLANK0000028661	135.5
	WTFX-TV	D31	DT	CP	PHILADELPHIA, PA	BLANK0000034830	142.5
	WBOC-TV	D32	DT	CP	SALISBURY, MD	BLANK0000033790	230.0
	WNLO	D32	DT	LIC	BUFFALO, NY	BLANK0000053502	343.6
	WLIW	D32	DT	CP	GARDEN CITY, NY	BLANK0000034431	244.7
	WPXV-TV	D32	DT	APP	NORFOLK, VA	BLANK0000034922	394.4
	WHUT-TV	D33	DT	LIC	WASHINGTON, DC	BLEDT20071018AIJ	156.1
	WPSG	D33	DT	CP	PHILADELPHIA, PA	BLANK0000034323	142.2
	WQPX-TV	D33	DT	CP	SCRANTON, PA	BLANK0000034918	154.6

Service area	Terrain-limited	IX-free, before	IX-free, after	Percent New IX
27891.2 3,046,000	24602.2 2,774,275	23398.2 2,639,716	23390.2 2,638,399	0.03 0.05

Undesired	Total IX	Unique IX, before	Unique IX, after
WCAV D32 DT BL	47.7 9,598	11.9 2,653	
WCAV D32 DT APP	59.7 10,999		19.9 3,970
WETA-TV D31 DT CP	23.8 2,819	0.0 0	0.0 0
WMPT D31 DT BL	51.5 15,683	11.9 2,175	11.9 2,175
WATM-TV D31 DT CP	43.9 1,151	43.9 1,151	43.9 1,151
WTFX-TV D31 DT CP	112.8 15,879	4.0 244	4.0 244
WBOC-TV D32 DT CP	951.5 97,300	735.2 58,586	731.2 58,502
WNLO D32 DT LIC	7.9 149	7.9 149	7.9 149
WLIW D32 DT CP	80.4 6,064	28.1 1,371	28.1 1,371
WPSG D33 DT CP	229.6 41,998	76.5 20,535	76.5 20,535
WQPX-TV D33 DT CP	7.9 242	7.9 242	7.9 242

-----  
Interference to BLANK0000027770 CP scenario 6

Desired:	Call	Chan	Svc	Status	City, State	File Number	Distance
	WHP-TV	D32	DT	CP	HARRISBURG, PA	BLANK0000027770	
Undesireds:	WCAV	D32	DT	BL	CHARLOTTESVILLE, VA	DTVBL363	296.9 km
	WCAV	D32	DT	APP	CHARLOTTESVILLE, VA	WCAV 205kW nonD	296.9
	WETA-TV	D31	DT	CP	WASHINGTON, DC	BLANK0000029879	156.1
	WMPT	D31	DT	BL	ANNAPOLIS, MD	DTVBL65942	150.1
	WATM-TV	D31	DT	CP	ALTOONA, PA	BLANK0000028661	135.5
	WTFX-TV	D31	DT	CP	PHILADELPHIA, PA	BLANK0000034830	142.5
	WBOC-TV	D32	DT	CP	SALISBURY, MD	BLANK0000033790	230.0

**Table 1 WCAV OET Bulletin 69 Interference Study**  
(page 11 of 20) Amendment July, 2018



WNLO	D32	DT	LIC	BUFFALO, NY	BLANK0000053502	343.6
WLIW	D32	DT	CP	GARDEN CITY, NY	BLANK0000034431	244.7
WPXV-TV	D32	DT	APP	NORFOLK, VA	BLANK0000034922	394.4
WHUT-TV	D33	DT	CP	WASHINGTON, DC	BPEDT20120627AAD	156.1
WPSG	D33	DT	CP	PHILADELPHIA, PA	BLANK0000034323	142.2
WQPX-TV	D33	DT	CP	SCRANTON, PA	BLANK0000034918	154.6

Service area	Terrain-limited	IX-free, before	IX-free, after	Percent New IX
27891.2 3,046,000	24602.2 2,774,275	23398.2 2,639,716	23390.2 2,638,399	0.03 0.05

Undesired	Total IX	Unique IX, before	Unique IX, after
WCAV D32 DT BL	47.7 9,598	11.9 2,653	
WCAV D32 DT APP	59.7 10,999		19.9 3,970
WETA-TV D31 DT CP	23.8 2,819	0.0 0	0.0 0
WMPT D31 DT BL	51.5 15,683	11.9 2,175	11.9 2,175
WATM-TV D31 DT CP	43.9 1,151	43.9 1,151	43.9 1,151
WTFX-TV D31 DT CP	112.8 15,879	4.0 244	4.0 244
WBOC-TV D32 DT CP	951.5 97,300	727.3 57,435	723.3 57,351
WNLO D32 DT LIC	7.9 149	7.9 149	7.9 149
WLIW D32 DT CP	80.4 6,064	28.1 1,371	28.1 1,371
WHUT-TV D33 DT CP	31.7 3,970	0.0 0	0.0 0
WPSG D33 DT CP	229.6 41,998	76.5 20,535	76.5 20,535
WQPX-TV D33 DT CP	7.9 242	7.9 242	7.9 242

Interference to BLANK0000033781 APP scenario 1

Desired:	Call	Chan	Svc	Status	City, State	File Number	Distance
	WHP-TV	D32	DT	APP	HARRISBURG, PA	BLANK0000033781	
Undesireds:	WCAV	D32	DT	BL	CHARLOTTESVILLE, VA	DTVBL363	296.9 km
	WCAV	D32	DT	APP	CHARLOTTESVILLE, VA	WCAV 205kW nonD	296.9
	WETA-TV	D31	DT	CP	WASHINGTON, DC	BLANK0000029879	156.1
	WMPT	D31	DT	BL	ANNAPOLIS, MD	DTVBL65942	150.1
	WATM-TV	D31	DT	CP	ALTOONA, PA	BLANK0000028661	135.5
	WTFX-TV	D31	DT	CP	PHILADELPHIA, PA	BLANK0000034830	142.5
	WBOC-TV	D32	DT	CP	SALISBURY, MD	BLANK0000033790	230.0
	WNLO	D32	DT	APP	BUFFALO, NY	BLANK0000036123	343.4
	WLIW	D32	DT	CP	GARDEN CITY, NY	BLANK0000034431	244.7
	WPXV-TV	D32	DT	APP	NORFOLK, VA	BLANK0000034922	394.4
	WHUT-TV	D33	DT	APP	WASHINGTON, DC	BLANK0000035679	156.1
	WPSG	D33	DT	CP	PHILADELPHIA, PA	BLANK0000034323	142.2
	WQPX-TV	D33	DT	CP	SCRANTON, PA	BLANK0000034918	154.6

Service area	Terrain-limited	IX-free, before	IX-free, after	Percent New IX
33691.4 4,030,693	29465.8 3,538,096	27575.2 3,139,776	27563.4 3,137,759	0.04 0.06

Undesired	Total IX	Unique IX, before	Unique IX, after
WCAV D32 DT BL	251.5 48,389	160.2 19,262	
WCAV D32 DT APP	267.3 50,409		172.0 21,279
WETA-TV D31 DT CP	123.2 61,960	4.0 3	0.0 0
WMPT D31 DT BL	274.0 147,134	23.8 3,875	23.8 3,875
WATM-TV D31 DT CP	75.8 2,368	75.8 2,368	75.8 2,368
WTFX-TV D31 DT CP	262.0 60,672	24.2 3,865	24.2 3,865
WBOC-TV D32 DT CP	1293.3 299,896	697.8 93,206	697.8 93,206
WNLO D32 DT APP	11.9 46	11.9 46	11.9 46
WLIW D32 DT CP	132.7 39,749	20.1 7,579	20.1 7,579
WPXV-TV D32 DT APP	47.7 32,248	0.0 0	0.0 0
WHUT-TV D33 DT APP	71.5 45,547	0.0 0	0.0 0
WPSG D33 DT CP	475.1 103,089	144.9 27,848	144.9 27,848
WQPX-TV D33 DT CP	12.0 300	12.0 300	12.0 300

Interference to BLANK0000033781 APP scenario 2

Desired:	Call	Chan	Svc	Status	City, State	File Number	Distance
	WHP-TV	D32	DT	APP	HARRISBURG, PA	BLANK0000033781	
Undesireds:	WCAV	D32	DT	BL	CHARLOTTESVILLE, VA	DTVBL363	296.9 km
	WCAV	D32	DT	APP	CHARLOTTESVILLE, VA	WCAV 205kW nonD	296.9
	WETA-TV	D31	DT	CP	WASHINGTON, DC	BLANK0000029879	156.1
	WMPT	D31	DT	BL	ANNAPOLIS, MD	DTVBL65942	150.1
	WATM-TV	D31	DT	CP	ALTOONA, PA	BLANK0000028661	135.5

**Table 1 WCAV OET Bulletin 69 Interference Study**  
(page 12 of 20) Amendment July, 2018



WTFX-TV	D31	DT	CP	PHILADELPHIA, PA	BLANK0000034830	142.5
WBOC-TV	D32	DT	CP	SALISBURY, MD	BLANK0000033790	230.0
WNLO	D32	DT	APP	BUFFALO, NY	BLANK0000036123	343.4
WLIW	D32	DT	CP	GARDEN CITY, NY	BLANK0000034431	244.7
WPXV-TV	D32	DT	APP	NORFOLK, VA	BLANK0000034922	394.4
WHUT-TV	D33	DT	LIC	WASHINGTON, DC	BLANK0000034323	156.1
WPSG	D33	DT	CP	PHILADELPHIA, PA	BLANK0000034323	142.2
WQPX-TV	D33	DT	CP	SCRANTON, PA	BLANK0000034918	154.6

Service area	Terrain-limited	IX-free, before	IX-free, after	Percent New IX
33691.4 4,030,693	29465.8 3,538,096	27575.2 3,139,776	27563.4 3,137,759	0.04 0.06

Undesired	Total IX	Unique IX, before	Unique IX, after
WCAV D32 DT BL	251.5 48,389	160.2 19,262	
WCAV D32 DT APP	267.3 50,409		172.0 21,279
WETA-TV D31 DT CP	123.2 61,960	11.9 1,105	7.9 1,102
WMPT D31 DT BL	274.0 147,134	23.8 3,875	23.8 3,875
WATM-TV D31 DT CP	75.8 2,368	75.8 2,368	75.8 2,368
WTFX-TV D31 DT CP	262.0 60,672	24.2 3,865	24.2 3,865
WBOC-TV D32 DT CP	1293.3 299,896	697.8 93,206	697.8 93,206
WNLO D32 DT APP	11.9 46	11.9 46	11.9 46
WLIW D32 DT CP	132.7 39,749	20.1 7,579	20.1 7,579
WPXV-TV D32 DT APP	47.7 32,248	0.0 0	0.0 0
WHUT-TV D33 DT LIC	27.8 14,390	0.0 0	0.0 0
WPSG D33 DT CP	475.1 103,089	144.9 27,848	144.9 27,848
WQPX-TV D33 DT CP	12.0 300	12.0 300	12.0 300

Interference to BLANK0000033781 APP scenario 3

Desired:	Call	Chan	Svc	Status	City, State	File Number	Distance
	WHP-TV	D32	DT	APP	HARRISBURG, PA	BLANK0000033781	
Undesireds:	WCAV	D32	DT	BL	CHARLOTTESVILLE, VA	DTVBL363	296.9 km
	WCAV	D32	DT	APP	CHARLOTTESVILLE, VA	WCAV 205kW nonD	296.9
	WETA-TV	D31	DT	CP	WASHINGTON, DC	BLANK0000029879	156.1
	WMPT	D31	DT	BL	ANNAPOLIS, MD	DTVBL65942	150.1
	WATM-TV	D31	DT	CP	ALTOONA, PA	BLANK0000028661	135.5
	WTFX-TV	D31	DT	CP	PHILADELPHIA, PA	BLANK0000034830	142.5
	WBOC-TV	D32	DT	CP	SALISBURY, MD	BLANK0000033790	230.0
	WNLO	D32	DT	APP	BUFFALO, NY	BLANK0000036123	343.4
	WLIW	D32	DT	CP	GARDEN CITY, NY	BLANK0000034431	244.7
	WPXV-TV	D32	DT	APP	NORFOLK, VA	BLANK0000034922	394.4
	WHUT-TV	D33	DT	CP	WASHINGTON, DC	BPEDT20120627AAD	156.1
	WPSG	D33	DT	CP	PHILADELPHIA, PA	BLANK0000034323	142.2
	WQPX-TV	D33	DT	CP	SCRANTON, PA	BLANK0000034918	154.6

Service area	Terrain-limited	IX-free, before	IX-free, after	Percent New IX
33691.4 4,030,693	29465.8 3,538,096	27563.3 3,138,959	27551.5 3,136,942	0.04 0.06

Undesired	Total IX	Unique IX, before	Unique IX, after
WCAV D32 DT BL	251.5 48,389	160.2 19,262	
WCAV D32 DT APP	267.3 50,409		172.0 21,279
WETA-TV D31 DT CP	123.2 61,960	0.0 0	0.0 0
WMPT D31 DT BL	274.0 147,134	23.8 3,875	23.8 3,875
WATM-TV D31 DT CP	75.8 2,368	75.8 2,368	75.8 2,368
WTFX-TV D31 DT CP	262.0 60,672	24.2 3,865	24.2 3,865
WBOC-TV D32 DT CP	1293.3 299,896	693.9 92,910	693.9 92,910
WNLO D32 DT APP	11.9 46	11.9 46	11.9 46
WLIW D32 DT CP	132.7 39,749	20.1 7,579	20.1 7,579
WPXV-TV D32 DT APP	47.7 32,248	0.0 0	0.0 0
WHUT-TV D33 DT CP	147.0 64,369	11.9 817	11.9 817
WPSG D33 DT CP	475.1 103,089	144.9 27,848	144.9 27,848
WQPX-TV D33 DT CP	12.0 300	12.0 300	12.0 300

Interference to BLANK0000033781 APP scenario 4

Desired:	Call	Chan	Svc	Status	City, State	File Number	Distance
	WHP-TV	D32	DT	APP	HARRISBURG, PA	BLANK0000033781	
Undesireds:	WCAV	D32	DT	BL	CHARLOTTESVILLE, VA	DTVBL363	296.9 km
	WCAV	D32	DT	APP	CHARLOTTESVILLE, VA	WCAV 205kW nonD	296.9

**Table 1 WCAV OET Bulletin 69 Interference Study**  
(page 13 of 20) Amendment July, 2018



WETA-TV	D31	DT	CP	WASHINGTON, DC	BLANK0000029879	156.1
WMPT	D31	DT	BL	ANNAPOLIS, MD	DTVBL65942	150.1
WATM-TV	D31	DT	CP	ALTOONA, PA	BLANK0000028661	135.5
WTFX-TV	D31	DT	CP	PHILADELPHIA, PA	BLANK0000034830	142.5
WBOC-TV	D32	DT	CP	SALISBURY, MD	BLANK0000033790	230.0
WNLO	D32	DT	APP	BUFFALO, NY	BLANK0000036123	343.4
WLIW	D32	DT	CP	GARDEN CITY, NY	BLANK0000034431	244.7
WPXV-TV	D32	DT	CP	NORFOLK, VA	BLANK0000026979	394.4
WHUT-TV	D33	DT	APP	WASHINGTON, DC	BLANK0000035679	156.1
WPSG	D33	DT	CP	PHILADELPHIA, PA	BLANK0000034323	142.2
WQPX-TV	D33	DT	CP	SCRANTON, PA	BLANK0000034918	154.6

Service area	Terrain-limited	IX-free, before	IX-free, after	Percent New IX
33691.4 4,030,693	29465.8 3,538,096	27575.2 3,139,776	27563.4 3,137,759	0.04 0.06

Undesired	Total IX	Unique IX, before	Unique IX, after
WCAV D32 DT BL	251.5 48,389	164.1 19,933	
WCAV D32 DT APP	267.3 50,409		176.0 21,950
WETA-TV D31 DT CP	123.2 61,960	4.0 3	0.0 0
WMPT D31 DT BL	274.0 147,134	23.8 3,875	23.8 3,875
WATM-TV D31 DT CP	75.8 2,368	75.8 2,368	75.8 2,368
WTFX-TV D31 DT CP	262.0 60,672	24.2 3,865	24.2 3,865
WBOC-TV D32 DT CP	1293.3 299,896	701.8 93,987	701.8 93,987
WNLO D32 DT APP	11.9 46	11.9 46	11.9 46
WLIW D32 DT CP	132.7 39,749	20.1 7,579	20.1 7,579
WPXV-TV D32 DT CP	23.8 19,112	0.0 0	0.0 0
WHUT-TV D33 DT APP	71.5 45,547	0.0 0	0.0 0
WPSG D33 DT CP	475.1 103,089	144.9 27,848	144.9 27,848
WQPX-TV D33 DT CP	12.0 300	12.0 300	12.0 300

Interference to BLANK0000033781 APP scenario 5

Desired:	Call	Chan	Svc	Status	City, State	File Number	Distance
	WHP-TV	D32	DT	APP	HARRISBURG, PA	BLANK0000033781	
Undesireds:	WCAV	D32	DT	BL	CHARLOTTESVILLE, VA	DTVBL363	296.9 km
	WCAV	D32	DT	APP	CHARLOTTESVILLE, VA	WCAV 205kW nonD	296.9
	WETA-TV	D31	DT	CP	WASHINGTON, DC	BLANK0000029879	156.1
	WMPT	D31	DT	BL	ANNAPOLIS, MD	DTVBL65942	150.1
	WATM-TV	D31	DT	CP	ALTOONA, PA	BLANK0000028661	135.5
	WTFX-TV	D31	DT	CP	PHILADELPHIA, PA	BLANK0000034830	142.5
	WBOC-TV	D32	DT	CP	SALISBURY, MD	BLANK0000033790	230.0
	WNLO	D32	DT	APP	BUFFALO, NY	BLANK0000036123	343.4
	WLIW	D32	DT	CP	GARDEN CITY, NY	BLANK0000034431	244.7
	WPXV-TV	D32	DT	CP	NORFOLK, VA	BLANK0000026979	394.4
	WHUT-TV	D33	DT	LIC	WASHINGTON, DC	BLEDT20071018AIJ	156.1
	WPSG	D33	DT	CP	PHILADELPHIA, PA	BLANK0000034323	142.2
	WQPX-TV	D33	DT	CP	SCRANTON, PA	BLANK0000034918	154.6

Service area	Terrain-limited	IX-free, before	IX-free, after	Percent New IX
33691.4 4,030,693	29465.8 3,538,096	27575.2 3,139,776	27563.4 3,137,759	0.04 0.06

Undesired	Total IX	Unique IX, before	Unique IX, after
WCAV D32 DT BL	251.5 48,389	164.1 19,933	
WCAV D32 DT APP	267.3 50,409		176.0 21,950
WETA-TV D31 DT CP	123.2 61,960	11.9 1,105	7.9 1,102
WMPT D31 DT BL	274.0 147,134	23.8 3,875	23.8 3,875
WATM-TV D31 DT CP	75.8 2,368	75.8 2,368	75.8 2,368
WTFX-TV D31 DT CP	262.0 60,672	24.2 3,865	24.2 3,865
WBOC-TV D32 DT CP	1293.3 299,896	701.8 93,987	701.8 93,987
WNLO D32 DT APP	11.9 46	11.9 46	11.9 46
WLIW D32 DT CP	132.7 39,749	20.1 7,579	20.1 7,579
WPXV-TV D32 DT CP	23.8 19,112	0.0 0	0.0 0
WHUT-TV D33 DT LIC	27.8 14,390	0.0 0	0.0 0
WPSG D33 DT CP	475.1 103,089	144.9 27,848	144.9 27,848
WQPX-TV D33 DT CP	12.0 300	12.0 300	12.0 300

Interference to BLANK0000033781 APP scenario 6

Desired:	Call	Chan	Svc	Status	City, State	File Number	Distance
	WHP-TV	D32	DT	APP	HARRISBURG, PA	BLANK0000033781	

**Table 1 WCAV OET Bulletin 69 Interference Study**  
(page 14 of 20) Amendment July, 2018



Undesireds:	WCAV	D32	DT	BL	CHARLOTTESVILLE, VA	DTVBL363	296.9 km
	WCAV	D32	DT	APP	CHARLOTTESVILLE, VA	WCAV 205kW nonD	296.9
	WETA-TV	D31	DT	CP	WASHINGTON, DC	BLANK0000029879	156.1
	WMPT	D31	DT	BL	ANNAPOLIS, MD	DTVBL65942	150.1
	WATM-TV	D31	DT	CP	ALTOONA, PA	BLANK0000028661	135.5
	WTFX-TV	D31	DT	CP	PHILADELPHIA, PA	BLANK0000034830	142.5
	WBOC-TV	D32	DT	CP	SALISBURY, MD	BLANK0000033790	230.0
	WNLO	D32	DT	APP	BUFFALO, NY	BLANK0000036123	343.4
	WLIW	D32	DT	CP	GARDEN CITY, NY	BLANK0000034431	244.7
	WPXV-TV	D32	DT	CP	NORFOLK, VA	BLANK0000026979	394.4
	WHUT-TV	D33	DT	CP	WASHINGTON, DC	BPEDT20120627AAD	156.1
	WPSG	D33	DT	CP	PHILADELPHIA, PA	BLANK0000034323	142.2
	WQPX-TV	D33	DT	CP	SCRANTON, PA	BLANK0000034918	154.6

Service area	Terrain-limited	IX-free, before	IX-free, after	Percent New IX
33691.4 4,030,693	29465.8 3,538,096	27563.3 3,138,959	27551.5 3,136,942	0.04 0.06

Undesired	Total IX	Unique IX, before	Unique IX, after
WCAV D32 DT BL	251.5 48,389	160.2 19,262	
WCAV D32 DT APP	267.3 50,409		172.0 21,279
WETA-TV D31 DT CP	123.2 61,960	0.0 0	0.0 0
WMPT D31 DT BL	274.0 147,134	23.8 3,875	23.8 3,875
WATM-TV D31 DT CP	75.8 2,368	75.8 2,368	75.8 2,368
WTFX-TV D31 DT CP	262.0 60,672	24.2 3,865	24.2 3,865
WBOC-TV D32 DT CP	1293.3 299,896	697.8 93,691	697.8 93,691
WNLO D32 DT APP	11.9 46	11.9 46	11.9 46
WLIW D32 DT CP	132.7 39,749	20.1 7,579	20.1 7,579
WPXV-TV D32 DT CP	23.8 19,112	0.0 0	0.0 0
WHUT-TV D33 DT CP	147.0 64,369	11.9 817	11.9 817
WPSG D33 DT CP	475.1 103,089	144.9 27,848	144.9 27,848
WQPX-TV D33 DT CP	12.0 300	12.0 300	12.0 300

Interference to BLANK0000033781 APP scenario 7

Call	Chan	Svc	Status	City, State	File Number	Distance
Desired: WHP-TV	D32	DT	APP	HARRISBURG, PA	BLANK0000033781	
Undesireds:	WCAV	D32	DT	BL	CHARLOTTESVILLE, VA	DTVBL363 296.9 km
	WCAV	D32	DT	APP	CHARLOTTESVILLE, VA	WCAV 205kW nonD 296.9
	WETA-TV	D31	DT	CP	WASHINGTON, DC	BLANK0000029879 156.1
	WMPT	D31	DT	BL	ANNAPOLIS, MD	DTVBL65942 150.1
	WATM-TV	D31	DT	CP	ALTOONA, PA	BLANK0000028661 135.5
	WTFX-TV	D31	DT	CP	PHILADELPHIA, PA	BLANK0000034830 142.5
	WBOC-TV	D32	DT	CP	SALISBURY, MD	BLANK0000033790 230.0
	WNLO	D32	DT	LIC	BUFFALO, NY	BLANK0000053502 343.6
	WLIW	D32	DT	CP	GARDEN CITY, NY	BLANK0000034431 244.7
	WPXV-TV	D32	DT	APP	NORFOLK, VA	BLANK0000034922 394.4
	WHUT-TV	D33	DT	APP	WASHINGTON, DC	BLANK0000035679 156.1
	WPSG	D33	DT	CP	PHILADELPHIA, PA	BLANK0000034323 142.2
	WQPX-TV	D33	DT	CP	SCRANTON, PA	BLANK0000034918 154.6

Service area	Terrain-limited	IX-free, before	IX-free, after	Percent New IX
33691.4 4,030,693	29465.8 3,538,096	27571.3 3,139,776	27559.4 3,137,759	0.04 0.06

Undesired	Total IX	Unique IX, before	Unique IX, after
WCAV D32 DT BL	251.5 48,389	160.2 19,262	
WCAV D32 DT APP	267.3 50,409		172.0 21,279
WETA-TV D31 DT CP	123.2 61,960	4.0 3	0.0 0
WMPT D31 DT BL	274.0 147,134	23.8 3,875	23.8 3,875
WATM-TV D31 DT CP	75.8 2,368	75.8 2,368	75.8 2,368
WTFX-TV D31 DT CP	262.0 60,672	24.2 3,865	24.2 3,865
WBOC-TV D32 DT CP	1293.3 299,896	697.8 93,206	697.8 93,206
WNLO D32 DT LIC	15.9 46	15.9 46	15.9 46
WLIW D32 DT CP	132.7 39,749	20.1 7,579	20.1 7,579
WPXV-TV D32 DT APP	47.7 32,248	0.0 0	0.0 0
WHUT-TV D33 DT APP	71.5 45,547	0.0 0	0.0 0
WPSG D33 DT CP	475.1 103,089	144.9 27,848	144.9 27,848
WQPX-TV D33 DT CP	12.0 300	12.0 300	12.0 300

Interference to BLANK0000033781 APP scenario 8

**Table 1 WCAV OET Bulletin 69 Interference Study**  
(page 15 of 20) Amendment July, 2018



Desired:	Call	Chan	Svc	Status	City, State	File Number	Distance
	WHP-TV	D32	DT	APP	HARRISBURG, PA	BLANK0000033781	
Undesireds:	WCAV	D32	DT	BL	CHARLOTTESVILLE, VA	DTVBL363	296.9 km
	WCAV	D32	DT	APP	CHARLOTTESVILLE, VA	WCAV 205kW nonD	296.9
	WETA-TV	D31	DT	CP	WASHINGTON, DC	BLANK0000029879	156.1
	WMPT	D31	DT	BL	ANNAPOLIS, MD	DTVBL65942	150.1
	WATM-TV	D31	DT	CP	ALTOONA, PA	BLANK0000028661	135.5
	WTFX-TV	D31	DT	CP	PHILADELPHIA, PA	BLANK0000034830	142.5
	WBOC-TV	D32	DT	CP	SALISBURY, MD	BLANK0000033790	230.0
	WNLO	D32	DT	LIC	BUFFALO, NY	BLANK0000053502	343.6
	WLIW	D32	DT	CP	GARDEN CITY, NY	BLANK0000034431	244.7
	WPXV-TV	D32	DT	APP	NORFOLK, VA	BLANK0000034922	394.4
	WHUT-TV	D33	DT	LIC	WASHINGTON, DC	BLEDT20071018AIJ	156.1
	WPSG	D33	DT	CP	PHILADELPHIA, PA	BLANK0000034323	142.2
	WQPX-TV	D33	DT	CP	SCRANTON, PA	BLANK0000034918	154.6
Service area		Terrain-limited		IX-free, before		IX-free, after	Percent New IX
33691.4 4,030,693		29465.8 3,538,096		27571.3 3,139,776		27559.4 3,137,759	0.04 0.06
Undesired		Total IX		Unique IX, before		Unique IX, after	
WCAV D32 DT BL		251.5 48,389		160.2 19,262			
WCAV D32 DT APP		267.3 50,409				172.0 21,279	
WETA-TV D31 DT CP		123.2 61,960		11.9 1,105		7.9 1,102	
WMPT D31 DT BL		274.0 147,134		23.8 3,875		23.8 3,875	
WATM-TV D31 DT CP		75.8 2,368		75.8 2,368		75.8 2,368	
WTFX-TV D31 DT CP		262.0 60,672		24.2 3,865		24.2 3,865	
WBOC-TV D32 DT CP		1293.3 299,896		697.8 93,206		697.8 93,206	
WNLO D32 DT LIC		15.9 46		15.9 46		15.9 46	
WLIW D32 DT CP		132.7 39,749		20.1 7,579		20.1 7,579	
WPXV-TV D32 DT APP		47.7 32,248		0.0 0		0.0 0	
WHUT-TV D33 DT LIC		27.8 14,390		0.0 0		0.0 0	
WPSG D33 DT CP		475.1 103,089		144.9 27,848		144.9 27,848	
WQPX-TV D33 DT CP		12.0 300		12.0 300		12.0 300	

-----  
Interference to BLANK0000033781 APP scenario 9

Desired:	Call	Chan	Svc	Status	City, State	File Number	Distance
	WHP-TV	D32	DT	APP	HARRISBURG, PA	BLANK0000033781	
Undesireds:	WCAV	D32	DT	BL	CHARLOTTESVILLE, VA	DTVBL363	296.9 km
	WCAV	D32	DT	APP	CHARLOTTESVILLE, VA	WCAV 205kW nonD	296.9
	WETA-TV	D31	DT	CP	WASHINGTON, DC	BLANK0000029879	156.1
	WMPT	D31	DT	BL	ANNAPOLIS, MD	DTVBL65942	150.1
	WATM-TV	D31	DT	CP	ALTOONA, PA	BLANK0000028661	135.5
	WTFX-TV	D31	DT	CP	PHILADELPHIA, PA	BLANK0000034830	142.5
	WBOC-TV	D32	DT	CP	SALISBURY, MD	BLANK0000033790	230.0
	WNLO	D32	DT	LIC	BUFFALO, NY	BLANK0000053502	343.6
	WLIW	D32	DT	CP	GARDEN CITY, NY	BLANK0000034431	244.7
	WPXV-TV	D32	DT	APP	NORFOLK, VA	BLANK0000034922	394.4
	WHUT-TV	D33	DT	CP	WASHINGTON, DC	BPEDT20120627AAD	156.1
	WPSG	D33	DT	CP	PHILADELPHIA, PA	BLANK0000034323	142.2
	WQPX-TV	D33	DT	CP	SCRANTON, PA	BLANK0000034918	154.6
Service area		Terrain-limited		IX-free, before		IX-free, after	Percent New IX
33691.4 4,030,693		29465.8 3,538,096		27559.4 3,138,959		27547.5 3,136,942	0.04 0.06
Undesired		Total IX		Unique IX, before		Unique IX, after	
WCAV D32 DT BL		251.5 48,389		160.2 19,262			
WCAV D32 DT APP		267.3 50,409				172.0 21,279	
WETA-TV D31 DT CP		123.2 61,960		0.0 0		0.0 0	
WMPT D31 DT BL		274.0 147,134		23.8 3,875		23.8 3,875	
WATM-TV D31 DT CP		75.8 2,368		75.8 2,368		75.8 2,368	
WTFX-TV D31 DT CP		262.0 60,672		24.2 3,865		24.2 3,865	
WBOC-TV D32 DT CP		1293.3 299,896		693.9 92,910		693.9 92,910	
WNLO D32 DT LIC		15.9 46		15.9 46		15.9 46	
WLIW D32 DT CP		132.7 39,749		20.1 7,579		20.1 7,579	
WPXV-TV D32 DT APP		47.7 32,248		0.0 0		0.0 0	
WHUT-TV D33 DT CP		147.0 64,369		11.9 817		11.9 817	
WPSG D33 DT CP		475.1 103,089		144.9 27,848		144.9 27,848	
WQPX-TV D33 DT CP		12.0 300		12.0 300		12.0 300	

**Table 1 WCAV OET Bulletin 69 Interference Study**  
(page 16 of 20) Amendment July, 2018



-----  
Interference to BLANK0000033781 APP scenario 10

Desired:	Call	Chan	Svc	Status	City, State	File Number	Distance
	WHP-TV	D32	DT	APP	HARRISBURG, PA	BLANK0000033781	
Undesireds:	WCAV	D32	DT	BL	CHARLOTTESVILLE, VA	DTVBL363	296.9 km
	WCAV	D32	DT	APP	CHARLOTTESVILLE, VA	WCAV 205kW nonD	296.9
	WETA-TV	D31	DT	CP	WASHINGTON, DC	BLANK0000029879	156.1
	WMPT	D31	DT	BL	ANNAPOLIS, MD	DTVBL65942	150.1
	WATM-TV	D31	DT	CP	ALTOONA, PA	BLANK0000028661	135.5
	WTFX-TV	D31	DT	CP	PHILADELPHIA, PA	BLANK0000034830	142.5
	WBOC-TV	D32	DT	CP	SALISBURY, MD	BLANK0000033790	230.0
	WNLO	D32	DT	LIC	BUFFALO, NY	BLANK0000053502	343.6
	WLIW	D32	DT	CP	GARDEN CITY, NY	BLANK0000034431	244.7
	WPXV-TV	D32	DT	CP	NORFOLK, VA	BLANK0000026979	394.4
	WHUT-TV	D33	DT	APP	WASHINGTON, DC	BLANK0000035679	156.1
	WPSG	D33	DT	CP	PHILADELPHIA, PA	BLANK0000034323	142.2
	WQPX-TV	D33	DT	CP	SCRANTON, PA	BLANK0000034918	154.6
Service area		Terrain-limited		IX-free, before		IX-free, after	Percent New IX
33691.4	4,030,693	29465.8	3,538,096	27571.3	3,139,776	27559.4 3,137,759	0.04 0.06
Undesired		Total IX		Unique IX, before		Unique IX, after	
WCAV D32 DT BL	251.5	48,389	164.1	19,933			
WCAV D32 DT APP	267.3	50,409			176.0	21,950	
WETA-TV D31 DT CP	123.2	61,960	4.0	3	0.0	0	
WMPT D31 DT BL	274.0	147,134	23.8	3,875	23.8	3,875	
WATM-TV D31 DT CP	75.8	2,368	75.8	2,368	75.8	2,368	
WTFX-TV D31 DT CP	262.0	60,672	24.2	3,865	24.2	3,865	
WBOC-TV D32 DT CP	1293.3	299,896	701.8	93,987	701.8	93,987	
WNLO D32 DT LIC	15.9	46	15.9	46	15.9	46	
WLIW D32 DT CP	132.7	39,749	20.1	7,579	20.1	7,579	
WPXV-TV D32 DT CP	23.8	19,112	0.0	0	0.0	0	
WHUT-TV D33 DT APP	71.5	45,547	0.0	0	0.0	0	
WPSG D33 DT CP	475.1	103,089	144.9	27,848	144.9	27,848	
WQPX-TV D33 DT CP	12.0	300	12.0	300	12.0	300	

-----  
Interference to BLANK0000033781 APP scenario 11

Desired:	Call	Chan	Svc	Status	City, State	File Number	Distance
	WHP-TV	D32	DT	APP	HARRISBURG, PA	BLANK0000033781	
Undesireds:	WCAV	D32	DT	BL	CHARLOTTESVILLE, VA	DTVBL363	296.9 km
	WCAV	D32	DT	APP	CHARLOTTESVILLE, VA	WCAV 205kW nonD	296.9
	WETA-TV	D31	DT	CP	WASHINGTON, DC	BLANK0000029879	156.1
	WMPT	D31	DT	BL	ANNAPOLIS, MD	DTVBL65942	150.1
	WATM-TV	D31	DT	CP	ALTOONA, PA	BLANK0000028661	135.5
	WTFX-TV	D31	DT	CP	PHILADELPHIA, PA	BLANK0000034830	142.5
	WBOC-TV	D32	DT	CP	SALISBURY, MD	BLANK0000033790	230.0
	WNLO	D32	DT	LIC	BUFFALO, NY	BLANK0000053502	343.6
	WLIW	D32	DT	CP	GARDEN CITY, NY	BLANK0000034431	244.7
	WPXV-TV	D32	DT	CP	NORFOLK, VA	BLANK0000026979	394.4
	WHUT-TV	D33	DT	LIC	WASHINGTON, DC	BLEDT20071018AIJ	156.1
	WPSG	D33	DT	CP	PHILADELPHIA, PA	BLANK0000034323	142.2
	WQPX-TV	D33	DT	CP	SCRANTON, PA	BLANK0000034918	154.6
Service area		Terrain-limited		IX-free, before		IX-free, after	Percent New IX
33691.4	4,030,693	29465.8	3,538,096	27571.3	3,139,776	27559.4 3,137,759	0.04 0.06
Undesired		Total IX		Unique IX, before		Unique IX, after	
WCAV D32 DT BL	251.5	48,389	164.1	19,933			
WCAV D32 DT APP	267.3	50,409			176.0	21,950	
WETA-TV D31 DT CP	123.2	61,960	11.9	1,105	7.9	1,102	
WMPT D31 DT BL	274.0	147,134	23.8	3,875	23.8	3,875	
WATM-TV D31 DT CP	75.8	2,368	75.8	2,368	75.8	2,368	
WTFX-TV D31 DT CP	262.0	60,672	24.2	3,865	24.2	3,865	
WBOC-TV D32 DT CP	1293.3	299,896	701.8	93,987	701.8	93,987	
WNLO D32 DT LIC	15.9	46	15.9	46	15.9	46	
WLIW D32 DT CP	132.7	39,749	20.1	7,579	20.1	7,579	
WPXV-TV D32 DT CP	23.8	19,112	0.0	0	0.0	0	

**Table 1 WCAV OET Bulletin 69 Interference Study**  
(page 17 of 20) Amendment July, 2018



WHUT-TV D33 DT LIC	27.8	14,390	0.0	0	0.0	0
WPSG D33 DT CP	475.1	103,089	144.9	27,848	144.9	27,848
WQPX-TV D33 DT CP	12.0	300	12.0	300	12.0	300

-----  
Interference to BLANK000033781 APP scenario 12

	Call	Chan	Svc	Status	City, State	File Number	Distance
Desired:	WHP-TV	D32	DT	APP	HARRISBURG, PA	BLANK0000033781	
Undesireds:	WCAV	D32	DT	BL	CHARLOTTESVILLE, VA	DTVBL363	296.9 km
	WCAV	D32	DT	APP	CHARLOTTESVILLE, VA	WCAV 205kW nonD	296.9
	WETA-TV	D31	DT	CP	WASHINGTON, DC	BLANK0000029879	156.1
	WMPT	D31	DT	BL	ANNAPOLIS, MD	DTVBL65942	150.1
	WATM-TV	D31	DT	CP	ALTOONA, PA	BLANK0000028661	135.5
	WTFX-TV	D31	DT	CP	PHILADELPHIA, PA	BLANK0000034830	142.5
	WBOC-TV	D32	DT	CP	SALISBURY, MD	BLANK0000033790	230.0
	WNLO	D32	DT	LIC	BUFFALO, NY	BLANK0000053502	343.6
	WLIW	D32	DT	CP	GARDEN CITY, NY	BLANK0000034431	244.7
	WPXV-TV	D32	DT	CP	NORFOLK, VA	BLANK0000026979	394.4
	WHUT-TV	D33	DT	CP	WASHINGTON, DC	BPEDT20120627AAD	156.1
	WPSG	D33	DT	CP	PHILADELPHIA, PA	BLANK0000034323	142.2
	WQPX-TV	D33	DT	CP	SCRANTON, PA	BLANK0000034918	154.6

	Service area		Terrain-limited		IX-free, before		IX-free, after		Percent New IX
	33691.4	4,030,693	29465.8	3,538,096	27559.4	3,138,959	27547.5	3,136,942	0.04 0.06

Undesired		Total IX	Unique IX, before	Unique IX, after
WCAV D32 DT BL	251.5	48,389	160.2	19,262
WCAV D32 DT APP	267.3	50,409		172.0 21,279
WETA-TV D31 DT CP	123.2	61,960	0.0	0.0 0
WMPT D31 DT BL	274.0	147,134	23.8	3,875 23.8 3,875
WATM-TV D31 DT CP	75.8	2,368	75.8	2,368 75.8 2,368
WTFX-TV D31 DT CP	262.0	60,672	24.2	3,865 24.2 3,865
WBOC-TV D32 DT CP	1293.3	299,896	697.8	93,691 697.8 93,691
WNLO D32 DT LIC	15.9	46	15.9	46 15.9 46
WLIW D32 DT CP	132.7	39,749	20.1	7,579 20.1 7,579
WPXV-TV D32 DT CP	23.8	19,112	0.0	0 0.0 0
WHUT-TV D33 DT CP	147.0	64,369	11.9	817 11.9 817
WPSG D33 DT CP	475.1	103,089	144.9	27,848 144.9 27,848
WQPX-TV D33 DT CP	12.0	300	12.0	300 12.0 300

-----  
Interference to BLANK000034922 APP scenario 1

	Call	Chan	Svc	Status	City, State	File Number	Distance
Desired:	WPXV-TV	D32	DT	APP	NORFOLK, VA	BLANK0000034922	
Undesireds:	WCAV	D32	DT	BL	CHARLOTTESVILLE, VA	DTVBL363	218.1 km
	WCAV	D32	DT	APP	CHARLOTTESVILLE, VA	WCAV 205kW nonD	218.1
	WBOC-TV	D32	DT	CP	SALISBURY, MD	BLANK0000033790	203.1
	WRPX-TV	D32	DT	CP	ROCKY MOUNT, NC	BLANK0000034408	170.1
	WHP-TV	D32	DT	CP	HARRISBURG, PA	BLANK0000027770	394.4

	Service area		Terrain-limited		IX-free, before		IX-free, after		Percent New IX
	30584.8	1,988,197	30576.9	1,988,126	29122.8	1,943,051	29110.9	1,942,856	0.04 0.01

Undesired		Total IX	Unique IX, before	Unique IX, after
WCAV D32 DT BL	290.9	31,911	255.1	31,340
WCAV D32 DT APP	302.9	32,106		267.1 31,535
WBOC-TV D32 DT CP	624.4	7,003	592.6	6,531 592.6 6,531
WRPX-TV D32 DT CP	578.5	6,732	570.5	6,633 570.5 6,633

-----  
Interference to BLANK000034922 APP scenario 2

	Call	Chan	Svc	Status	City, State	File Number	Distance
Desired:	WPXV-TV	D32	DT	APP	NORFOLK, VA	BLANK0000034922	
Undesireds:	WCAV	D32	DT	BL	CHARLOTTESVILLE, VA	DTVBL363	218.1 km
	WCAV	D32	DT	APP	CHARLOTTESVILLE, VA	WCAV 205kW nonD	218.1
	WBOC-TV	D32	DT	CP	SALISBURY, MD	BLANK0000033790	203.1
	WRPX-TV	D32	DT	CP	ROCKY MOUNT, NC	BLANK0000034408	170.1

**Table 1 WCAV OET Bulletin 69 Interference Study**  
(page 18 of 20) Amendment July, 2018



WHP-TV	D32	DT	APP	HARRISBURG, PA	BLANK0000033781	394.4
Service area	Terrain-limited		IX-free, before		IX-free, after	Percent New IX
30584.8 1,988,197	30576.9	1,988,126	29122.8	1,943,051	29110.9 1,942,856	0.04 0.01
Undesired	Total IX		Unique IX, before		Unique IX, after	
WCAV D32 DT BL	290.9	31,911	255.1	31,340		
WCAV D32 DT APP	302.9	32,106			267.1	31,535
WBOC-TV D32 DT CP	624.4	7,003	592.6	6,531	592.6	6,531
WRPX-TV D32 DT CP	578.5	6,732	570.5	6,633	570.5	6,633
WHP-TV D32 DT APP	7.9	117	0.0	0	0.0	0

-----  
Interference to BLANK0000026979 CP scenario 1

Desired:	Call WPXV-TV	Chan D32	Svc DT	Status CP	City, State NORFOLK, VA	File Number BLANK0000026979	Distance		
Undesireds:	WCAV	D32	DT	BL	CHARLOTTESVILLE, VA	DTVBL363	218.1 km		
	WCAV	D32	DT	APP	CHARLOTTESVILLE, VA	WCAV 205kW nonD	218.1		
	WBOC-TV	D32	DT	CP	SALISBURY, MD	BLANK0000033790	203.1		
	WRPX-TV	D32	DT	CP	ROCKY MOUNT, NC	BLANK0000034408	170.1		
	WHP-TV	D32	DT	CP	HARRISBURG, PA	BLANK0000027770	394.4		
Service area		Terrain-limited		IX-free, before		IX-free, after		Percent New IX	
26104.8	1,893,553	26092.9	1,893,377	25451.5	1,882,969	25431.6	1,881,806	0.08	0.06
Undesired				Total IX		Unique IX, before		Unique IX, after	
WCAV	D32	DT	BL	123.6	3,821	115.6	3,706		
WCAV	D32	DT	APP	143.5	4,984			135.5	4,869
WBOC-TV	D32	DT	CP	210.8	2,319	202.9	2,204	202.9	2,204
WRPX-TV	D32	DT	CP	319.0	4,493	315.0	4,383	315.0	4,383

-----  
Interference to BPEDT20120627AAD CP scenario 1

	Call	Chan	Svc	Status	City, State	File Number	Distance		
Desired:	WHUT-TV	D33	DT	CP	WASHINGTON, DC	BPEDT20120627AAD			
Undesireds:	WCAV	D32	DT	BL	CHARLOTTESVILLE, VA	DTVBL363	162.5 km		
	WCAV	D32	DT	APP	CHARLOTTESVILLE, VA	WCAV 205kW nonD	162.5		
	WBOC-TV	D32	DT	CP	SALISBURY, MD	BLANK0000033790	134.0		
	WHP-TV	D32	DT	CP	HARRISBURG, PA	BLANK0000027770	156.1		
	WPSG	D33	DT	CP	PHILADELPHIA, PA	BLANK0000034323	198.9		
	WTVZ-TV	D33	DT	LIC	NORFOLK, VA	BLCDT20090602ABA	243.3		
	WRC-TV	D34	DT	CP	WASHINGTON, DC	BLANK0000034340	1.2		
Service area		Terrain-limited		IX-free, before		IX-free, after		Percent New IX	
26344.4	8,298,094	25340.7	8,242,676		24261.7	8,140,988	24261.7	8,140,988	0.00 0.00
Undesired				Total IX	Unique IX, before		Unique IX, after		
WCAV D32 DT BL				4.0	51	0.0	0		
WCAV D32 DT APP				4.0	51		0.0 0		
WBOC-TV D32 DT CP				72.4	2,606	8.0	101	8.0	101
WPSG D33 DT CP				840.9	87,071	660.7	78,963	660.7	78,963
WTVZ-TV D33 DT LIC				378.4	22,270	210.2	14,172	210.2	14,172
WRC-TV D34 DT CP				35.8	901	19.9	344	19.9	344

-----  
Interference to BPEDT20120627AAD CP scenario 2

Desired:	Call WHUT-TV	Chan D33	Svc DT	Status CP	City, State WASHINGTON, DC	File Number BPEDT20120627AAD	Distance
Undesireds:	WCAV	D32	DT	BL	CHARLOTTESVILLE, VA	DTVBL363	162.5 km
	WCAV	D32	DT	APP	CHARLOTTESVILLE, VA	WCAV 205kW nonD	162.5
	WBOC-TV	D32	DT	CP	SALISBURY, MD	BLANK0000033790	134.0
	WHP-TV	D32	DT	APP	HARRISBURG, PA	BLANK0000033781	156.1
	WPSG	D33	DT	CP	PHILADELPHIA, PA	BLANK0000034323	198.9
	WTVZ-TV	D33	DT	LIC	NORFOLK, VA	BLCDT20090602ABA	243.3
	WRC-TV	D34	DT	CP	WASHINGTON, DC	BLANK0000034340	1.2
	Service area	Terrain-limited		IX-free, before		IX-free, after	Percent New IX

**Table 1 WCAV OET Bulletin 69 Interference Study**  
(page 19 of 20) Amendment July, 2018

26344.4	8,298,094	25340.7	8,242,676	24257.7	8,140,307	24257.7	8,140,307	0.00	0.00
Undesired			Total IX	Unique IX, before		Unique IX, after			
WCAV D32 DT BL	4.0		51	0.0		0			
WCAV D32 DT APP	4.0		51			0.0		0	
WBOC-TV D32 DT CP	72.4		2,606	8.0		101		8.0	
WHP-TV D32 DT APP	7.9		895	4.0		681		4.0	
WPSG D33 DT CP	840.9		87,071	656.8		78,749		656.8	
WTVZ-TV D33 DT LIC	378.4		22,270	210.2		14,172		210.2	
WRC-TV D34 DT CP	35.8		901	19.9		344		19.9	

-----  
Interference to proposal scenario 1  
\*\*MX: 3.99% interference received

Desired:	Call	Chan	Svc	Status	City, State	File Number	Distance
	WCAV	D32	DT	APP	CHARLOTTESVILLE, VA	WCAV 205kW nonD	
Undesireds:	WBOC-TV	D32	DT	CP	SALISBURY, MD	BLANK0000033790	254.4 km
	WRPX-TV	D32	DT	CP	ROCKY MOUNT, NC	BLANK0000034408	210.7
	WHP-TV	D32	DT	CP	HARRISBURG, PA	BLANK0000027770	296.9
	WPXV-TV	D32	DT	APP	NORFOLK, VA	BLANK0000034922	218.1
	WHUT-TV	D33	DT	APP	WASHINGTON, DC	BLANK0000035679	162.5

Service area		Terrain-limited		IX-free		Percent IX	
23851.0	1,032,270	20508.3	874,886	19525.9	839,992	4.79	3.99
Undesired			Total IX	Unique IX		Prcnt Unique IX	
WBOC-TV D32 DT CP	40.2		189	12.1		0.06	0.00
WRPX-TV D32 DT CP	543.9		15,632	359.3		1.75	1.29
WHP-TV D32 DT CP	20.1		346	0.0		0.00	0.00
WPXV-TV D32 DT APP	599.0		23,596	406.3		1.98	2.18

-----  
Interference to proposal scenario 2  
2.18% interference received

Desired:	Call	Chan	Svc	Status	City, State	File Number	Distance
	WCAV	D32	DT	APP	CHARLOTTESVILLE, VA	WCAV 205kW nonD	
Undesireds:	WBOC-TV	D32	DT	CP	SALISBURY, MD	BLANK0000033790	254.4 km
	WRPX-TV	D32	DT	CP	ROCKY MOUNT, NC	BLANK0000034408	210.7
	WHP-TV	D32	DT	CP	HARRISBURG, PA	BLANK0000027770	296.9
	WPXV-TV	D32	DT	CP	NORFOLK, VA	BLANK0000026979	218.1
	WHUT-TV	D33	DT	APP	WASHINGTON, DC	BLANK0000035679	162.5

Service area		Terrain-limited		IX-free		Percent IX	
23851.0	1,032,270	20508.3	874,886	19768.5	855,854	3.61	2.18
Undesired			Total IX	Unique IX		Prcnt Unique IX	
WBOC-TV D32 DT CP	40.2		189	20.1		0.10	0.01
WRPX-TV D32 DT CP	543.9		15,632	451.6		2.20	1.57
WHP-TV D32 DT CP	20.1		346	0.0		0.00	0.00
WPXV-TV D32 DT CP	256.0		5,198	163.7		0.80	0.37

-----  
Interference to proposal scenario 3  
\*\*MX: 4.96% interference received

Desired:	Call	Chan	Svc	Status	City, State	File Number	Distance
	WCAV	D32	DT	APP	CHARLOTTESVILLE, VA	WCAV 205kW nonD	
Undesireds:	WBOC-TV	D32	DT	CP	SALISBURY, MD	BLANK0000033790	254.4 km
	WRPX-TV	D32	DT	CP	ROCKY MOUNT, NC	BLANK0000034408	210.7
	WHP-TV	D32	DT	APP	HARRISBURG, PA	BLANK0000033781	296.9
	WPXV-TV	D32	DT	APP	NORFOLK, VA	BLANK0000034922	218.1
	WHUT-TV	D33	DT	APP	WASHINGTON, DC	BLANK0000035679	162.5

Service area		Terrain-limited		IX-free		Percent IX	
23851.0	1,032,270	20508.3	874,886	19445.5	831,477	5.18	4.96
Undesired			Total IX	Unique IX		Prcnt Unique IX	
WBOC-TV D32 DT CP	40.2		189	8.0		0.04	0.00

**Table 1 WCAV OET Bulletin 69 Interference Study**  
 (page 20 of 20) Amendment July, 2018



WRPX-TV D32 DT CP	543.9	15,632	319.2	8,527	1.56	0.97
WHP-TV D32 DT APP	241.1	14,016	80.4	8,515	0.39	0.97
WPXV-TV D32 DT APP	599.0	23,596	374.2	18,387	1.82	2.10

-----  
 Interference to proposal scenario 4  
 \*\*MX: 3.18% interference received

Desired:	Call	Chan	Svc	Status	City, State	File Number	Distance
	WCAV	D32	DT	APP	CHARLOTTESVILLE, VA	WCAV 205kW nonD	
Undesireds:	WBOC-TV	D32	DT	CP	SALISBURY, MD	BLANK0000033790	254.4 km
	WRPX-TV	D32	DT	CP	ROCKY MOUNT, NC	BLANK0000034408	210.7
	WHP-TV	D32	DT	APP	HARRISBURG, PA	BLANK0000033781	296.9
	WPXV-TV	D32	DT	CP	NORFOLK, VA	BLANK0000026979	218.1
	WHUT-TV	D33	DT	APP	WASHINGTON, DC	BLANK0000035679	162.5

Service area	Terrain-limited	IX-free	Percent IX
23851.0 1,032,270	20508.3 874,886	19672.1 847,030	4.08 3.18

Undesired	Total IX	Unique IX	Prct Unique IX
WBOC-TV D32 DT CP	40.2 189	8.0 19	0.04 0.00
WRPX-TV D32 DT CP	543.9 15,632	387.3 10,396	1.89 1.19
WHP-TV D32 DT APP	241.1 14,016	96.4 8,824	0.47 1.01
WPXV-TV D32 DT CP	256.0 5,198	147.6 2,834	0.72 0.32

**Channel and  
Facility  
Information**

Section	Question	Response
Proposed Community of License	Facility ID	363
	State	Virginia
	City	CHARLOTTESVILLE
	DTV Channel	32
Facility Type	Facility Type	Commercial
	Station Type	Main
Zone	Zone	1

**Antenna Location  
Data**

Section	Question	Response
Antenna Structure Registration	Do you have an FCC Antenna Structure Registration (ASR) Number?	No
	ASR Number	
Coordinates (NAD83)	Latitude	37° 59' 04.2" N+
	Longitude	078° 28' 51.1" W-
	Structure Type	GTOWER-Guyed Structure Used for Communication Purposes
	Overall Structure Height	58.9 meters
	Support Structure Height	45.4 meters
	Ground Elevation (AMSL)	443.5 meters
Antenna Data	Height of Radiation Center Above Ground Level	51.5 meters
	Height of Radiation Center Above Average Terrain	329.0 meters
	Height of Radiation Center Above Mean Sea Level	495.0 meters
	Effective Radiated Power	205 kW

**Antenna  
Technical Data**

Section	Question	Response
Antenna Type	Antenna Type	Non-Directional
	Do you have an Antenna ID?	
	Antenna ID	
Antenna Manufacturer and Model	Manufacturer:	DIE
	Model	TFU-21ETT-VP-R-O4
	Rotation	
	Electrical Beam Tilt	1
	Mechanical Beam Tilt	Not Applicable
	toward azimuth	
	Polarization	Elliptical
DTV and DTS: Elevation Pattern	Does the proposed antenna propose elevation radiation patterns that vary with azimuth for reasons other than the use of mechanical beam tilt?	No
	Uploaded file for elevation antenna (or radiation) pattern data	