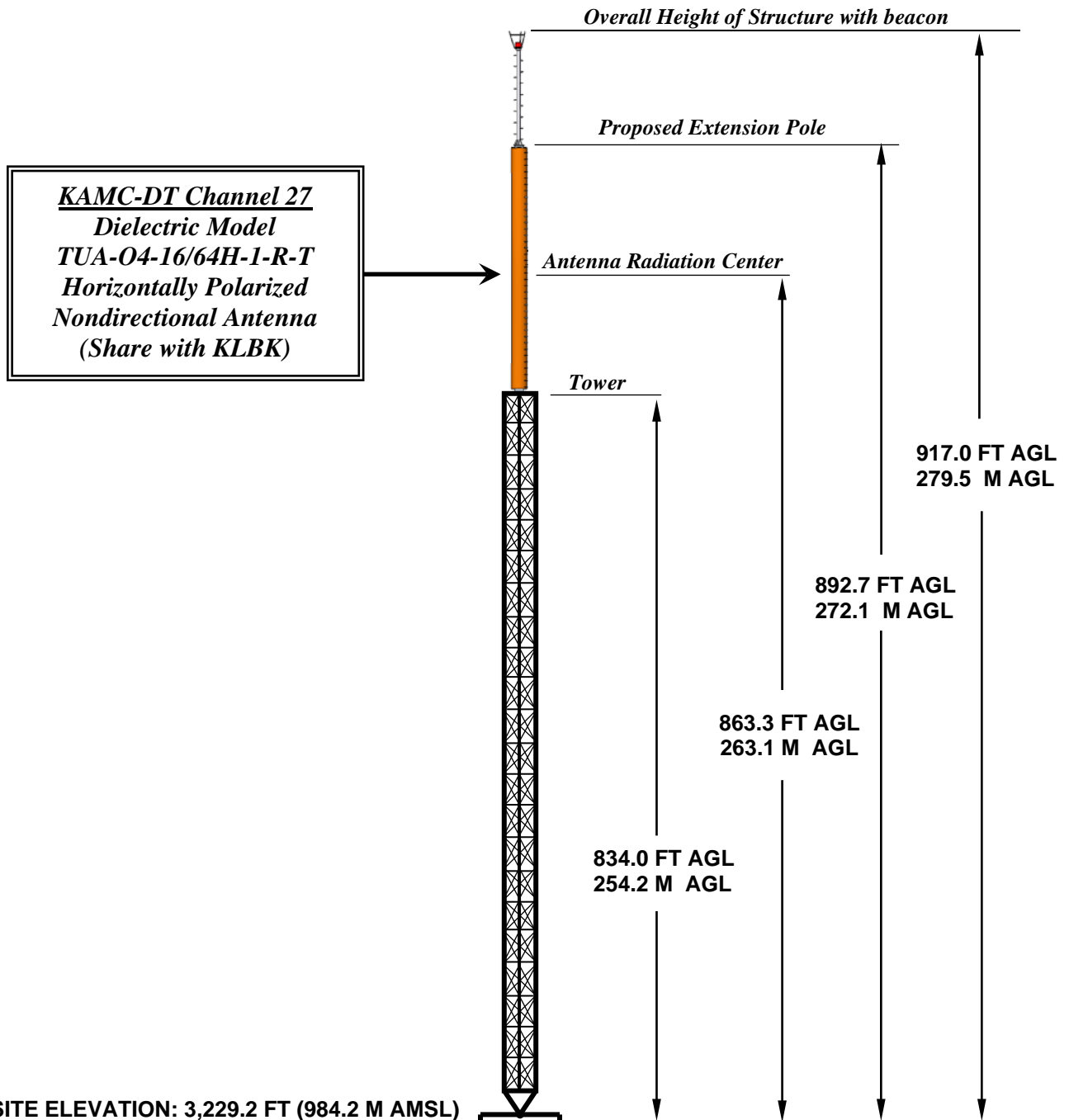


KAMC-DT PROPOSED ELEVATION VIEW



OVERALL HEIGHT AGL: 279.5 M
OVERALL HEIGHT AMSL: 1,263.7 M
RADIATION CENTER AGL: 263.1 M
RADIATION CENTER AMSL: 1,247.3 M
RADIATION CENTER HAAT: 265.9 M
AVG OF ALL NON-ODD RADIALS: 981.4 M
SITE HAAT: 2.8 M

COORDINATES (NAD 83):

N. LATITUDE 33° 31' 33.8"
W. LONGITUDE 101° 52' 08.6"

Antenna Structure Registration Number:
1054347

NOTE: NOT TO SCALE

Kessler and Gehman Associates, Inc.



Consultants • Broadcast • Wireless
507 NW 60th Street, Suite C
Gainesville, FL 32607
www.kesslerandgehman.com

KAMC-DT CHANNEL 27

Lubbock, Texas

20180409

EXHIBIT 1