



Kessler and Gehman Associates
Consultants • Broadcast • Wireless

APPLICATION FOR A NEW POST TRANSITION AUXILIARY STATION FOR WSAV(TV)

Savannah, GA

Prepared For:

Nexstar Broadcasting, Inc.
545 E. John Carpenter Freeway
Suite 700
Irving, TX 75062

Prepared By:

Ryan Wilhour
Consulting Engineering
Kessler and Gehman Associates
507 NW 60th Street, Suite D
Gainesville, FL 32607-2055
352-332-3157 Extension 3
ryan@kesslerandgehman.com
www.kesslerandgehman.com

Prepared On:

February 15, 2018

TABLE OF CONTENTS

1.0	INTRODUCTION AND SCOPE OF WORK.....	2
2.0	PROPOSED AUXILIARY FACILITY.....	2
3.0	PREDICTED COVERAGE CONTOUR	2
4.0	TVSTUDY ANALYSIS	3
5.0	ANTENNA STRUCTURE REGISTRATION AND TOWER MODIFICATION.....	3
6.0	CERTIFICATION.....	3
	Appendix A – 47 CFR Section 73.1675(a)(1) Contour Analysis	4
	Appendix B – TVStudy V2.2.4 Analysis.....	5
	Appendix C – Tower Elevation Profile	7

1.0 INTRODUCTION AND SCOPE OF WORK

Kessler and Gehman Associates, Inc. has been authorized by Nexstar Broadcasting, Inc., licensee of WSAV(TV) to prepare the instant application and associated exhibits in support of an application for construction permit for an auxiliary television broadcast station.

2.0 PROPOSED AUXILIARY FACILITY

Nexstar Broadcasting Inc., seeks authorization for an auxiliary broadcast facility with an ERP of 900kW at a HAAT of 332.4 m on channel 16 located at ASR 1049788 for WSAV(TV). The facility will utilize a side mount Dielectric TFU-16WB C160 horizontally polarized directional antenna rotated to 320 degrees from true north.

3.0 PREDICTED COVERAGE CONTOUR

Appendix A demonstrates the predicted noise limited coverage contours of the proposed auxiliary facility and its associated main construction permitted facility having FCC File No.: 0000027673. The contours were generated in accordance with the method described in 47 CFR Section 73.684 utilizing the appropriate F(50,90) propagate curves.

Appendix A clearly illustrates that the proposed auxiliary contour is 100% subsumed by the construction permitted contour and thus, complies with the coverage requirement of 47 CFR Section 73.1675(a)(1). The instant auxiliary facility shall substantially achieve its goal of providing comparable coverage to its viewers when necessary to use the proposed WSAV(TV) auxiliary facility.

4.0 TVSTUDY ANALYSIS

Appendix B is the interference analysis summary output generated from TVStudy v2.2.4 which indicates that the proposed facility is not predicted to cause or receive interference and is compliant with all other spatial reference checks.

5.0 ANTENNA STRUCTURE REGISTRATION AND TOWER MODIFICATION

The structure to which the WSAV(TV) auxiliary antenna will be mounted to has an antenna structure registration (“ASR”) number of 1049788 and is owned by the instant applicant. The addition of the side mount antenna will not require any modifications to the ASR.

6.0 CERTIFICATION

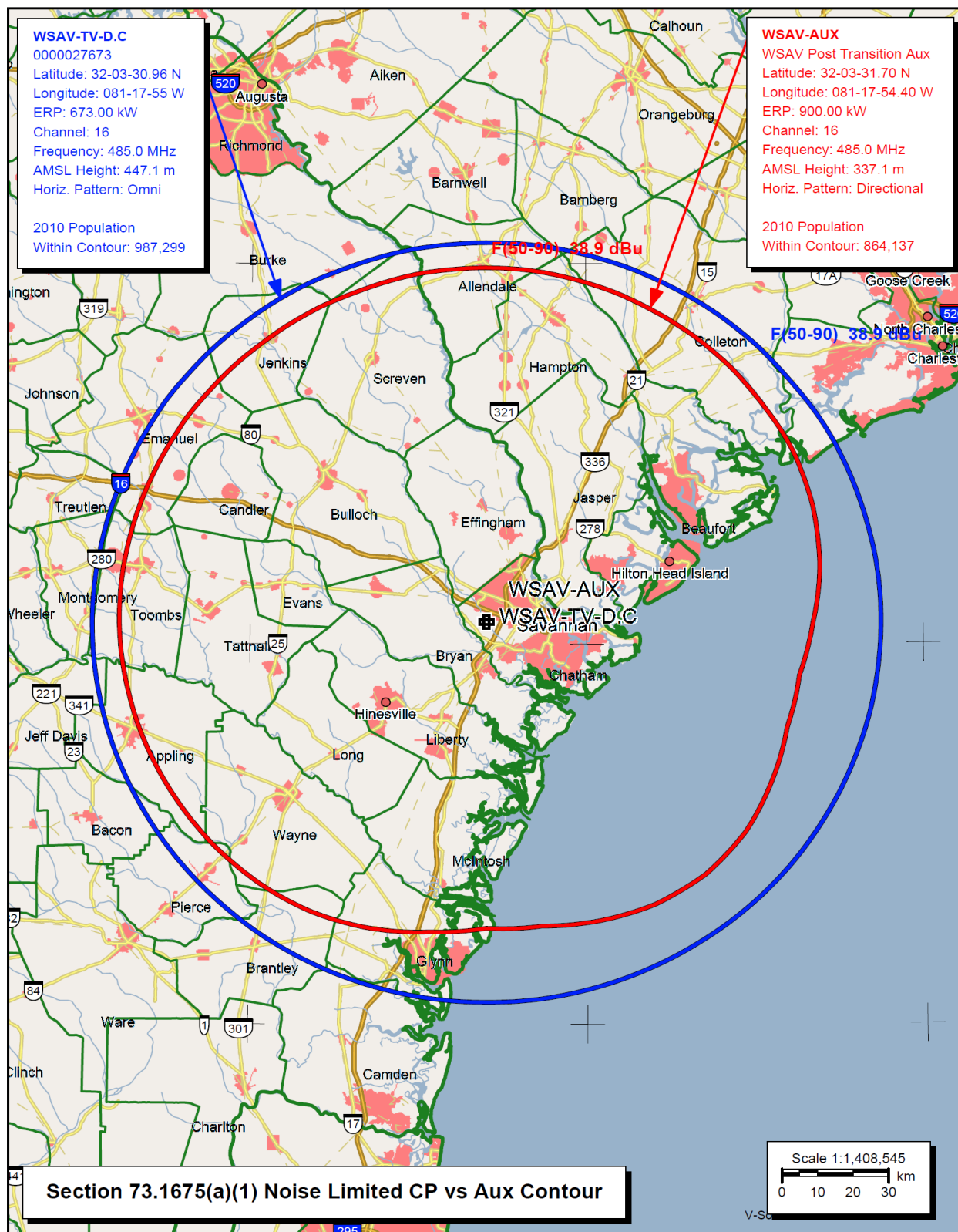
I, Ryan Wilhour, am an engineering associate of Kessler and Gehman Associates, Inc. having offices in Gainesville, Florida and have been working in the field of radio and television broadcast consulting since 1996. I am a graduate of the University of Florida with a Bachelor of Science degree in electrical engineering. I state that I personally conducted the site survey. The foregoing statement and the report regarding the aforementioned engineering work are true and correct to the best of my knowledge.

Ryan Wilhour



Consulting Engineer
February 15, 2018

Appendix A – 47 CFR Section 73.1675(a)(1) Contour Analysis



Appendix B – TVStudy V2.2.4 Analysis

Study created: 2018.02.15 12:03:46

Study build station data: LMS TV 2018-02-14 (9)

Proposal: WSAV-TV D16 DT APP SAVANNAH, GA
File number: WSAV Post Transition AUX
Facility ID: 48662
Station data: User record
Record ID: 90
Country: U.S.
Zone: II

Stations potentially affected by proposal:

IX	Call	Chan	Svc	Status	City, State	File Number	Distance
No	WLTX	D15	DT	CP	COLUMBIA, SC	BLANK0000028035	232.0 km
No	WLTX	D15	DT	BL	COLUMBIA, SC	DTVBL37176	232.0
Yes	WCJB-TV	D16	DT	LIC	GAINESVILLE, FL	BLCDT20071119AJB	299.4
No	WRCF-CD	D16	DC	CP	ORLANDO, FL	BLANK0000034010	386.5
No	WRCF-CD	D16	DC	BL	ORLANDO, FL	DTVBL10549	388.0
No	WJHG-TV	D16	DT	CP	PANAMA CITY, FL	BLANK0000025385	432.8
No	WJHG-TV	D16	DT	BL	PANAMA CITY, FL	DTVBL73136	432.8
Yes	WAGT-CD	D16	DC	LIC	AUGUSTA, GA	BLANK0000001455	171.7
Yes	WAGT-CD	D16	DC	CP	AUGUSTA, GA	BLANK0000035762	158.6
Yes	WDMA-CD	D16	DC	CP	MACON, GA	BLANK0000034487	239.0
Yes	WDMA-CD	D16	DC	BL	MACON, GA	DTVBL21150	239.0
Yes	WPXA-TV	D16	DT	CP	ROME, GA	BLANK0000034338	399.8
Yes	WPXA-TV	D16	DT	BL	ROME, GA	DTVBL51969	399.8
No	WPXU-TV	D16	DT	CP	JACKSONVILLE, NC	BLANK0000026976	450.3
No	WPXU-TV	D16	DT	BL	JACKSONVILLE, NC	DTVBL37971	450.3
Yes	WJPM-TV	D16	DT	CP	FLORENCE, SC	BLANK0000025028	286.2
Yes	WJPM-TV	D16	DT	BL	FLORENCE, SC	DTVBL61008	286.2
Yes	WTAT-TV	D17	DT	CP	CHARLESTON, SC	BLANK0000027762	179.4
Yes	WTAT-TV	D17	DT	APP	CHARLESTON, SC	BLANK0000034503	179.4
Yes	WTAT-TV	D17	DT	BL	CHARLESTON, SC	DTVBL416	179.4

No non-directional AM stations found within 0.8 km

No directional AM stations found within 3.2 km

Record parameters as studied:

Channel: D16
Latitude: 32 3 31.70 N (NAD83)
Longitude: 81 17 54.40 W
Height AMSL: 337.1 m
HAAT: 332.4 m
Peak ERP: 900 kW
Antenna: Dielectric TFU-16WB C160 0.0 deg
Elev Pattn: Generic
Elec Tilt: 0.55

38.9 dBu contour:

Azimuth	ERP	HAAT	Distance
0.0 deg	896 kW	329.6 m	103.2 km
45.0	670	332.1	100.8
90.0	229	333.0	91.6
135.0	352	335.5	95.5
180.0	169	334.5	89.3
225.0	595	334.0	100.0
270.0	871	330.5	103.0
315.0	853	330.3	102.8

Distance to Canadian border: 1073.4 km

Distance to Mexican border: 1660.3 km

WSAV(TV) – Auxiliary Facility
Savannah, GA

Conditions at FCC monitoring station: Powder Springs GA
Bearing: 303.0 degrees Distance: 377.1 km

Proposal is not within the West Virginia quiet zone area

Conditions at Table Mountain receiving zone:
Bearing: 299.4 degrees Distance: 2319.0 km

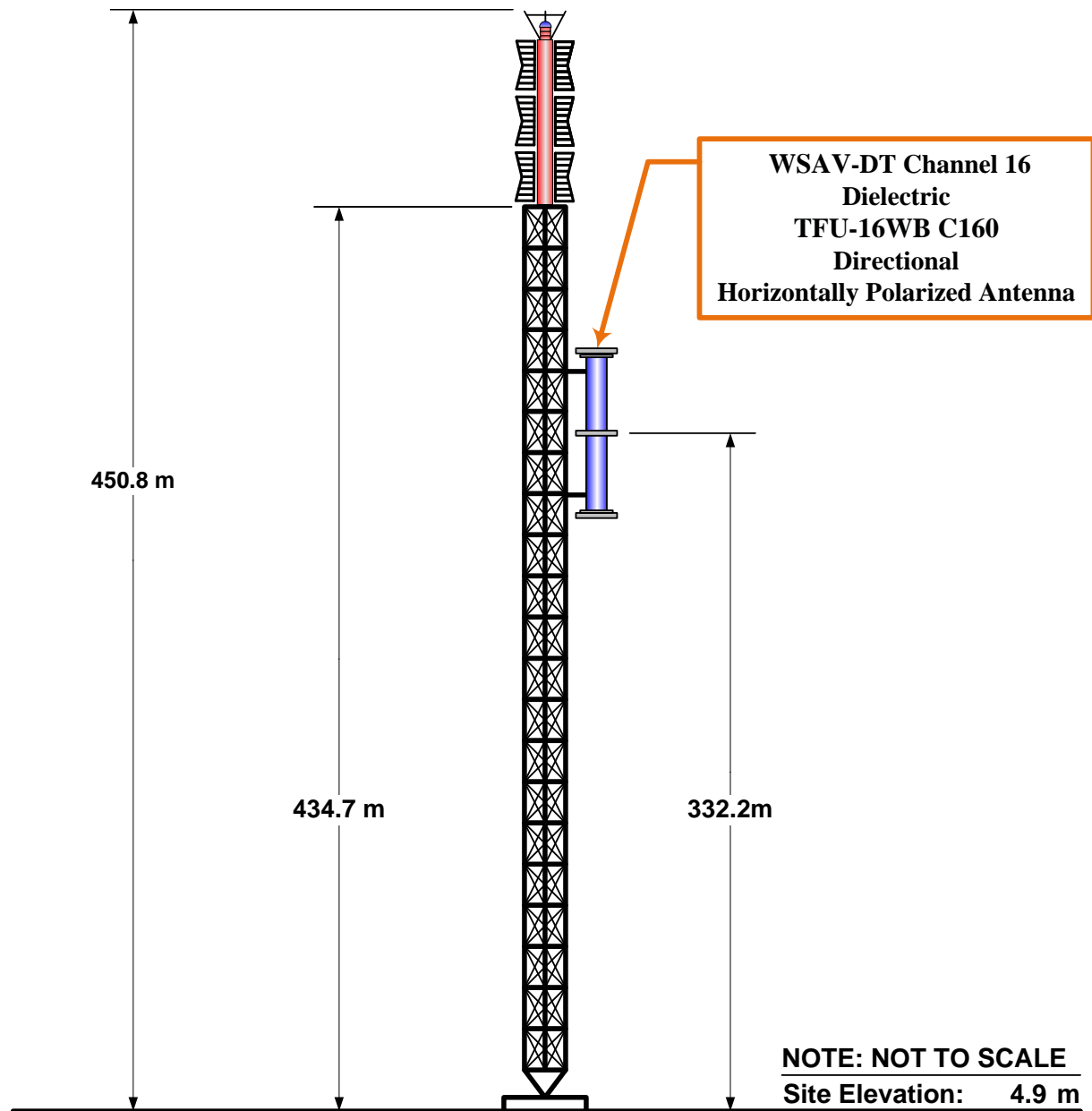
No land mobile station failures found

Study cell size: 2.00 km
Profile point spacing: 1.00 km

Maximum new IX to full-service and Class A: 0.50%
Maximum new IX to LPTV: 2.00%

No IX check failures found.

Appendix C – Tower Elevation Profile



Radiation Center AMSL:	337.1 m
Radiation Center HAAT:	332.4 m
FCC ASR Number:	1049788

ASR Coordinates (NAD 83):	
N. Latitude	32° 03' 31.7"
W. Longitude	81° 17' 54.4"