

**Before the  
FEDERAL COMMUNICATIONS COMMISSION  
Washington, D.C. 20554**

In the Matter of	)	
	)	
Amendment of Section 73.622(i)	)	
Table of Allotments,	)	MB Docket No. _____
Digital Television Table of Allotments	)	RM- _____
(Block Island, Rhode Island and	)	
Newport, Rhode Island)	)	

To: Office of the Secretary  
Attn: Video Division, Media Bureau

**PETITION FOR RULE MAKING**

Ocean State Television, LLC ("Petitioner"), licensee of digital television station WPXQ-TV, by and through its attorneys and pursuant to Section 307(b) of the Communications Act of 1934, as amended, and Section 1.420 of the Commission's rules,<sup>1</sup> hereby submits this Petition for Rulemaking (the "Petition") to request that the Commission amend Section 73.622(i) of its Rules, the DTV Table of Allotments, to delete Channel 17 at Block Island, Rhode Island and substitute Channel 17 at Newport, Rhode Island.<sup>2</sup> Pursuant to Section 1.420, Petitioner further

---

<sup>1</sup> 47 U.S.C. § 307(b); 47 C.F.R. § 1.420(i).

<sup>2</sup> ION recognizes that the Television Table of Allotments has not been updated since the conclusion of Auction 1000 and that the Commission intends to adopt a fully revised Table of Allotments following the repack. *See Expanding the Economic and Innovation Opportunities of Spectrum Through Incentive Auctions, Report and Order*, 29 FCC Rcd 6567, n. 1545 (2014). The requested change should be included in the permanent Television Table of Allotments adopted by the Commission.

requests that the license for WPXQ-TV also be modified to specify the new community of license without allowing competing applications.<sup>3</sup> As set forth herein, grant of this Petition will create a preferential arrangement of allotments by affording Newport, Rhode Island, its first local full-power television service. To the extent necessary, Petitioner requests waiver of the Commission's freeze on the filing of petitions for digital channel substitutions.<sup>4</sup>

**I. REALLOTMENT OF CHANNEL 17 TO NEWPORT, RHODE ISLAND SATISFIES THE FCC'S ALLOTMENT PRIORITIES.**

Pursuant to Section 307(b) of the Communications Act of 1934, as amended, the Commission must provide a "fair, efficient and equitable distribution of radio service" among the various states and communities in the country.<sup>5</sup> In considering a proposal to reallocate a television station from one community to another, the Commission compares the existing allotment and the proposed allotment to determine whether or not the proposal will result in a preferential arrangement of allotments.<sup>6</sup> In making this determination, the Commission has long applied a series of five allotment priorities. Those television allotment priorities are to "(1) provide at least one television service to all parts of the United States; (2) provide each community with at least one television broadcast station; (3) provide a choice of at least two television services to all parts of the United States; (4) provide each community with at least two television broadcast

---

<sup>3</sup> Modification of FM and TV Authorizations to Specify a New Community of License, *Report and Order*, 4 FCC Rcd 4870 (1989), *recon. granted in part*, 5 FCC Rcd 7094 (1990).

<sup>4</sup> Freeze on the Filing of Petitions for Digital Channel Substitutions, Effective Immediately, Public Notice, 26 FCC Rcd 7721 (2011) ("*Freeze Notice*").

<sup>5</sup> 47 U.S.C. §307(b).

<sup>6</sup> See, e.g., North Pole and Plattsburg, New York, *Report and Order*, 26 FCC Rcd 32, 33 (2011), *citing* Amendment of Section 3.606 of the Commission's Rules and Regulations, *Sixth Report and Order*, 41 FCC 148, 167-173 (1952).

stations; and (5) assign any remaining channels to communities based on population, geographic location, and the number of television services available to the community from stations located in other communities.”<sup>7</sup>

Reallotment of WPXQ-TV’s Channel 17 from Block Island to Newport would represent a preferential allotment pursuant to Priority 2, as Newport is a much larger community than is Block Island and the reallotment would provide the larger community of Newport with its first local full-power television service.<sup>8</sup>

Petitioner does not currently propose any change in WPXQ-TV’s permitted facilities. WPXQ-TV is a Channel Sharing station and currently shares facilities with WLWC, New Bedford, MA (FCC Facility ID. No. 3978). As shown in Exhibit A hereto, WPXQ-TV currently broadcasts using host station WLWC’s facilities, and WPXQ-TV will provide a signal that encompasses the entire City of Newport from the station’s currently authorized transmission facilities.<sup>9</sup> WPXQ-TV’s 41 dBu service contour also will continue to fully encompass Block Island, as will the signals of six other full-power television signals.<sup>10</sup> As a result, this proposal does not in any way compromise Priority 1. Nor will the proposed change of community of license create any new interference to any other television station or other licensed operation.

---

<sup>7</sup> *Id.*

<sup>8</sup> According to the 2010 census, Block Island has a population of 1,051 and Newport has a population of 24,027. See United States Census Bureau American Fact Finder, available at [http://factfinder.census.gov/faces/nav/jsf/pages/community\\_facts.xhtml](http://factfinder.census.gov/faces/nav/jsf/pages/community_facts.xhtml).

<sup>9</sup> See Exhibit A.

<sup>10</sup> See Exhibit A.

## **II. THE COMMUNITY OF NEWPORT DESERVES A FIRST LOCAL TELEVISION SERVICE.**

Newport is a seaside town that was established in 1639. Well known for its Gilded-Age mansions, Newport qualifies as a community for allotment purposes. First, Newport has a robust local government. With a 2010 Census population of 24,027 people, the City of Newport is the county seat of Newport County.<sup>11</sup> The City operates under a home rule charter from 1663 and the Charter provides for a Council/City Manager form of government.<sup>12</sup> The Council is comprised of seven members; one representative is elected from each of the City's three voting wards and four are elected at-large, all for two-year terms. The Mayor is elected by the Council from among the four at-large councilors.

The City government oversees municipal services such as the Newport Fire Department, the Newport Police Department, the Newport Harbormaster's Office, the Department of Utilities (including the Water Division and the Water Pollution Control Division), and manages municipal properties such as Easton's Beach (the City of Newport's largest public ocean surf beach), numerous playing fields and a recreation center. Consistent with Newport's historic status, the City also has a Planning Board, a Zoning Board, and numerous Commissions and Committees such as the Historic District Commission, the Waterfront Commission, the Tree and Open Space Commission, and the Accessibility Advisory Committee. Newport also hosts the Newport Public Library.<sup>13</sup> Newport Public Schools include Claiborne Pell Elementary School,

---

<sup>11</sup> See United States Census Bureau American Fact Finder, available at [http://factfinder.census.gov/faces/nav/jsf/pages/community\\_facts.xhtml](http://factfinder.census.gov/faces/nav/jsf/pages/community_facts.xhtml).

<sup>12</sup> Information about the City of Newport is taken from the City's home page, available at <http://www.cityofnewport.com/home>. See Exhibit B for screenshots of the information.

<sup>13</sup> See <http://www.newportlibraryri.org/>.

Frank E. Thompson Middle School, Newport Area Career and Technical Center, and William S. Rogers High School.<sup>14</sup>

Newport also has a diversified local economy, much of which is centered on local tourism.<sup>15</sup> In addition to its well-known oceanfront mansions such as “The Breakers” (1895) and “Rosecliff” (1902), Newport’s “Old Quarter” contains many historically significant buildings from the colonial period including the Redwood Library and Athenaeum (1747), the oldest continuous lending library in the United States; Touro Synagogue (1763), the oldest Synagogue in the United States; Colony House (1741), one of Rhode Island’s four Colonial capitols; and White Horse Tavern (1763), the oldest operating tavern in the United States. Newport is also home to the world famous Newport Jazz Festival and the Newport Folk Festival, as well as the Newport Art Museum and the Museum of Yachting.

As one of the largest and most important Colonial seaports in the British Empire before the American Revolution, Newport’s access to the sea has always been integral to the City’s local character. Today, in addition to being a mecca for sailing, yachting and recreational fishing, Newport also has important ties to the U.S. Navy. In particular, Newport is home to the United States Naval War College, founded in 1884, which is an education and research institution of the United States Navy that specializes in developing ideas for naval warfare and that also houses the United States Naval War College Museum. Newport is also the home to the Naval Undersea Warfare Center, which is the U.S. Navy’s full-spectrum research, development, testing and fleet support center for submarines, autonomous underwater systems, and offensive and defensive weapons systems associated with undersea warfare.

---

<sup>14</sup> See <https://www.npsri.net/domain/63>.

<sup>15</sup> See Exhibit B for screenshots with information about the local economy.

Despite its size and importance, there are currently no full-power television stations licensed to Newport. Accordingly, an allotment at Newport would qualify for consideration under Priority 2 as the community's first local service. While Petitioner acknowledges that the reallocation would result in Block Island losing its first local service, Block Island is a much smaller community (1,000 persons vs. 24,000 persons) and Block Island's primary focus in recent years has been the preservation of its natural lands and rural character.<sup>16</sup> While Block Island prefers to avoid commercial development, grant of the Petition will cause no public harm as Block Island would remain well-served after reallocation of WPXQ-TV to Newport. As shown in Exhibit A hereto, Block Island will continue to be served by 5 full power commercial television stations and 1 full power non-commercial television station. Indeed, the proposed reallocation will not deprive Block Island of any existing reception service, as Petitioner does not propose any change in the station's authorized service area as part of this proposal.

**III. GRANT OF THE REQUESTED REALLOCATION IS AMPLY SUPPORTED BY COMMISSION PRECEDENT.**

Grant of the requested community of license change would be consistent with the FCC's previous applications of its television station allocation priorities. The instant request is similar to the one the Commission granted in *Ardmore, Oklahoma and Sherman, Texas*, where the Commission recognized that moving a first local service from a smaller to a larger community

---

<sup>16</sup> Block Island Conservancy, a local conservation group, has been able to preserve over 45 percent of the land on Block Island and protect it from development. *See, e.g.*, <http://biconservancy.org/>.

created a preferential arrangement of allotments where service to the original community would not be curtailed.<sup>17</sup> The Commission reached a similar result in *Columbia and Edenton, North Carolina*, where it recognized that an “administrative” community of license change was acceptable where service to the original community would not be reduced. The same analysis should apply in this case.<sup>18</sup>

To the extent necessary to enable grant of this Petition, Petitioner requests waiver of the Media Bureau’s current freeze on the filing of petitions for digital channel substitutions. The Media Bureau implemented the freeze in May 2011 in preparation for the incentive auction to “permit the Commission to evaluate its reallocation and repacking proposals and their impact on the Post-Transition Table of DTV Allotments.”<sup>19</sup> Now the auction is now over, repacking is underway, and grant of the instant Petition would have no impact on the Post-Transition Table of DTV Allotments because the proposed change of community of license does not involve any proposed change in facilities. Thus, waiver of the freeze is justified.<sup>20</sup>

---

<sup>17</sup> See 7 FCC Rcd 4846 (1992) (“*Ardmore*”). Like *Ardmore*, this case is easily distinguishable from *Campbellsville and Bardstown, Kentucky*, 19 FCC Rcd 12745 (2004), which involved two communities of roughly equal size and the requesting station was proposing a new tower site that may not have provided service to the original community. Here, Newport is roughly 24 times the size of Block Island and ION is not proposing to operate from a different tower site.

<sup>18</sup> *Columbia and Edenton, North Carolina*, 20 FCC Rcd 12457 (2005).

<sup>19</sup> *Freeze Notice*.

<sup>20</sup> Waiver of the freeze would also be consistent with precedent. In a similar situation during the initial stages of the DTV transition, the Commission recognized that a change in community of license unaccompanied by a change in channel or facilities would not impact the Table of Allotments. See *Johnstown and Jeannette, Pennsylvania, Report and Order*, 12 FCC Red 10300, 10301 (1997), citing *Advanced Television Systems and Their Impact Upon the Existing Television Broadcast Service, Sixth Further Notice of Proposed Rulemaking*, 11 FCC Red 10968, 10992 (1996). More recently, the Video Division waived the freeze to permit a change in community of license for stations that do not propose any change in authorized facilities. See, e.g., *Seaford and Dover, Delaware, Report and Order*, 29 FCC Rcd 4773 (Med. Bur. 2014); *Scottsbluff, Nebraska and Sidney, Nebraska, Report and Order*, 31 FCC Rcd 5204 (Med. Bur. 2016).

#### IV. CONCLUSION

Petitioner respectfully requests that the Commission issue a Notice of Proposed Rulemaking seeking comment on amendment of the DTV Table of Allotments to delete Channel 17 at Block Island, Rhode Island and substitute Channel 17 at Newport, Rhode Island. If this Petition is granted, Petitioner will file all necessary applications to modify Petitioner's authorizations for WPXQ-TV to specify Newport as the station's community of license.

Respectfully submitted,

OCEAN STATE TELEVISION, LLC

By: 

John R. Feore, Jr.  
Jason Rademacher

Its Attorneys

**COOLEY LLP**  
1299 Pennsylvania Avenue, N.W.  
Suite 700  
Washington, D.C. 20004  
(202) 776-2668

November 14, 2017



**EXHIBIT A**

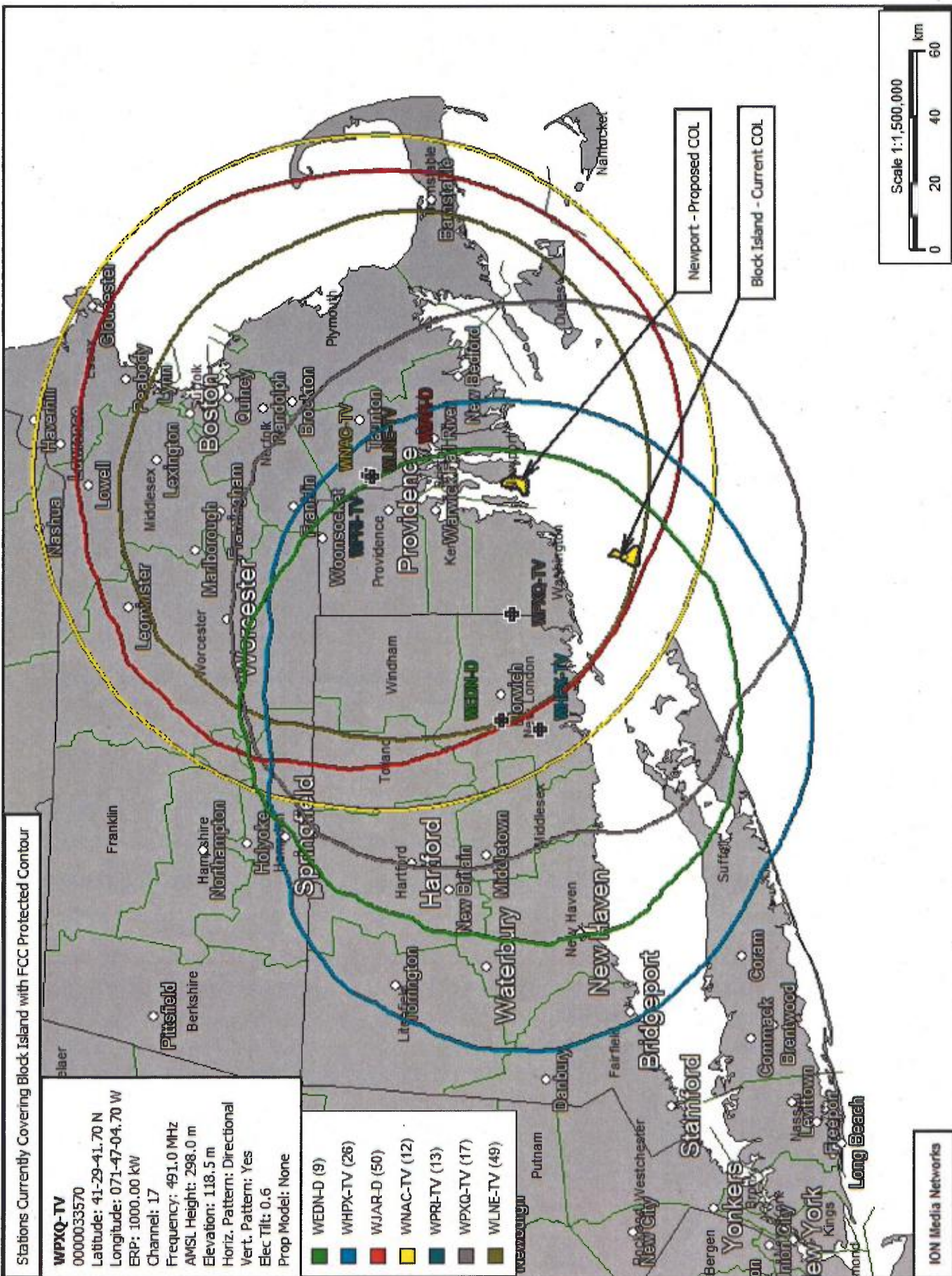
Technical Exhibit – Contour of WPXQ-TV and  
Television Stations Serving Block Island, Rhode Island

# Stations Currently Covering Block Island with FCC Protected Contour

## WPXQ-TV

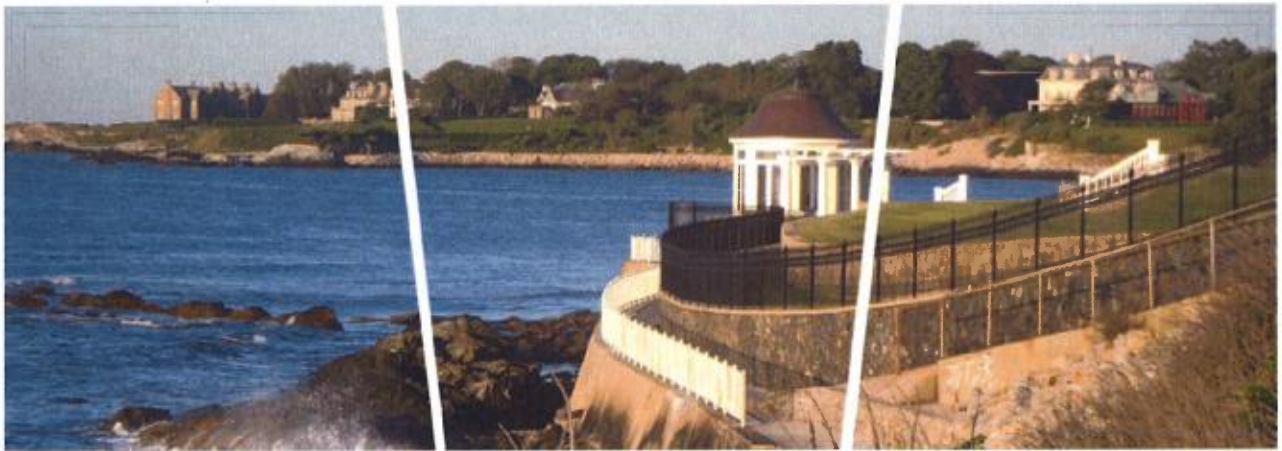
0000033570  
 Latitude: 41-29-41.70 N  
 Longitude: 071-47-04.70 W  
 ERP: 1000.00 kW  
 Channel: 17  
 Frequency: 491.0 MHz  
 AMSL Height: 298.0 m  
 Elevation: 118.5 m  
 Horiz. Pattern: Directional  
 Vert. Pattern: Yes  
 Elec Tilt: 0.6  
 Prop Model: None

- WEDN-D (9)
- WHPX-TV (26)
- WJAR-D (50)
- WNAC-TV (12)
- WPRI-TV (13)
- WPXQ-TV (17)
- WLNE-TV (49)



**EXHIBIT B**

Information About Newport, Rhode Island



## LATEST NEWS

### Department of Utilities Construction Project Updates

The Department of Utilities construction projects update for the week of November 6th is noted below.

[More](#)

### Washington St. CSO Facility Force Main Failure

Force main failure at Gateway Center has been repaired. No service disruption in sanitary sewer system.

[More](#)

### Career Opportunity - NOW HIRING!

Please visit the City of Newport's Human Resources department site for more information.

[More](#)

## MEETINGS

DEC 05

Newport Canvassing Authority Meeting

## UPCOMING EVENTS

There are no Events.

## Government

# Newport City Council

The City of Newport operates under a home rule charter.

The Charter provides for a Council/City Manager form of government.

The Council is comprised of seven members; one representative is elected from the City's three voting wards and four are elected at-large, all for two year terms. (Contact information is listed on the links to the left.)

The Mayor is elected by the Council from among the four at-large councilors.



## Mayor



### Newport City Council - Mayor

Henry F. Winthrop  
49 Bateman Avenue  
Newport, RI 02840

Email: [hwinthrop@cityofnewport.com](mailto:hwinthrop@cityofnewport.com)

Office: (401) 845-5436

Patricia A. Cofield, Administrative Assistant to the City Manager and Mayor

Email: [pcofield@cityofnewport.com](mailto:pcofield@cityofnewport.com)

Office: (401) 845-5437

Mayor Winthrop, a lifelong Newporter, is a graduate of the former De La Salle Academy and Rhode Island College, and did course work at the Sloan School of Management at MIT. Harry held the position of Director of Planning with Electric Boat - General Dynamics Corporation until his retirement in 2007.

From 2007 through 2014, Harry worked as a Defense Industry Consultant with Apollo Professional Solutions in the development of a 20-year facilities master plan for the Electric Boat Manufacturing Facility at Quonset Point, Rhode Island. Harry also performed senior management training and mentoring, developed control strategies for manufacturing and production, created staffing plans, and conducted performance assessments.

In 1990, Harry was elected to the Newport City Council and served terms from 1990-1993, 1995, and then from 2011-2012. In August 2012, Harry was elected Mayor of the City of Newport and held that Office until December 2014. In November 2016, Harry was re-elected to the City Council and is currently serving as Mayor of the City of Newport.

# Fire

## OUR MISSION

The mission of the Newport Fire Department is to preserve lives and property within the community by providing services directed at the prevention and control of fires, accidents, and other emergencies, while maintaining the highest standards of professionalism, efficiency, and effectiveness.

## PERSONNEL

The Newport Fire Department offers Firefighting, ALS Emergency Medical Services, and Fire Prevention Services to over 24,000 citizens. The Fire Department is comprised of 95 personnel divided into three branches: Administration, Fire Prevention and Fire Suppression/EMS personnel.

Administrative personnel include the Fire Chief, who oversees the entire department and the Administrative Officer, who manages daily administrative operations for the department.

The Fire Prevention Office is overseen by the Fire Marshal, and includes: the Captain of Fire Prevention, the Captain Fire Inspector, the Captain Superintendent of Fire Alarm, and the Captain of Fire Suppression Systems.

The Fire Suppression/EMS branch includes four shifts of 22 personnel each, dispersed among 3 stations. Each shift is comprised of: 1 Deputy Chief, 2 Captains, 3 Lieutenants, 15 firefighters & 1 Firefighter Dispatcher.

## STATIONS AND APPARATUS



STATION ONE (Headquarters)- 21 W. Marlborough Street at America's Cup Avenue (Built 1934)

Apparatus- 1 Incident Command vehicle, 1 Engine, 1 Reserve Engine, 1 100' Ladder Truck, 1 ALS Rescue wagon, 1 21' Rigid Hull Inflatable Boat, 1 Rescue Jet-Ski, 1 Water Rescue Trailer, & 1 Reserve ALS Rescue.

[See photos.](#)



**STATION TWO - 100 Old Fort Road (Built 1986)**

Apparatus- 1 Engine, 1 Reserve Engine, 1 100' Ladder Truck, 1 ALS Rescue wagon, 1 Water Rescue Trailer, 1 Rescue Jet-Ski. [See photos.](#)



**STATION FIVE - Touro Street at Mary Street (Built 1867 & renovated in 1895)**

Apparatus- 1 Engine, 1 Reserve Engine, 1 10' Inflatable Boat. [See photos.](#)



Police

## **Newport Police Department**

### ***Police and Community - Partners in Excellence***



2012 Awards 3

**Emergency: (401) 847-1212  
or 911**

**Non-Emergency/General  
Information:**

**(401) 847-1306**

**Anonymous Tips Line: (401)  
846-2606**

**TTY: (401) 849-3930**

### **Welcome!**

Thank you for visiting our website. The links on the left side will provide you with information about the divisions, units and people that make up the police department.

### **"Police and Community-Partners in Excellence"**

As partners with the community, the Police Department encourages the public at large to report crimes or suspicious activity to the Police Department. Remember, if you "See something, Say Something." You can use the main numbers to speak to someone directly or simply dial the Anonymous TIPS Line at 401-849-3930. For crimes in progress, please call 911 or the Police Emergency number at 401-847-1212. To contact a Community Oriented Police Officer directly, you can call COP 1 office located at 2 Park Holm in the City's North End at 401-845-5865, CPO Merrie Scott at her COP 2 office on Broadway at 401-845-5863, COP 3 Office located in Brick Market Place at 401-845-5862 and CPO Joshua Wildes at his COP 4 Office located at 514 Thames Street at 401-845-5864.

## Car Safety Seat Installation

Detective Robert Spellman, Detective Joseph Leonardo, Detective Christopher McGregor, Detective Anson Smith, and CPO Wildes are Department certified Child Safety Seat Inspectors. They can provide you with assistance and instructions for the proper installation of child safety seats in your vehicle. The Officers will be available only by appointment between 7 am and 3 pm Monday through Friday (except Holidays). Please call the department at 401-847-1306 and ask for one of the Officers listed above or leave a message for them.

## Quick Links

- [Request a public record through the Access to Public Records Act](#)
- [Fill out an alarm permit application](#)
- [Request a review of your parking ticket through the Parking Violation Review process](#)
- [Submit a police report online](#)
- [Special Detail Request Form](#)
- [File a commendation, inquiry or complaint against police personnel](#)

## Mission Statement

The mission of the Newport Police Department is to provide excellence in police service through aggressive pursuit of violators of the law and the prevention of crime and disorderliness.

This will be accomplished by forging a partnership with the citizens of Newport to enhance the quality of life, reduce the fear of crime, preserve the peace, and impartially enforce the law, while maintaining a higher standard of integrity than is generally expected of others, and respecting the dignity of each individual.

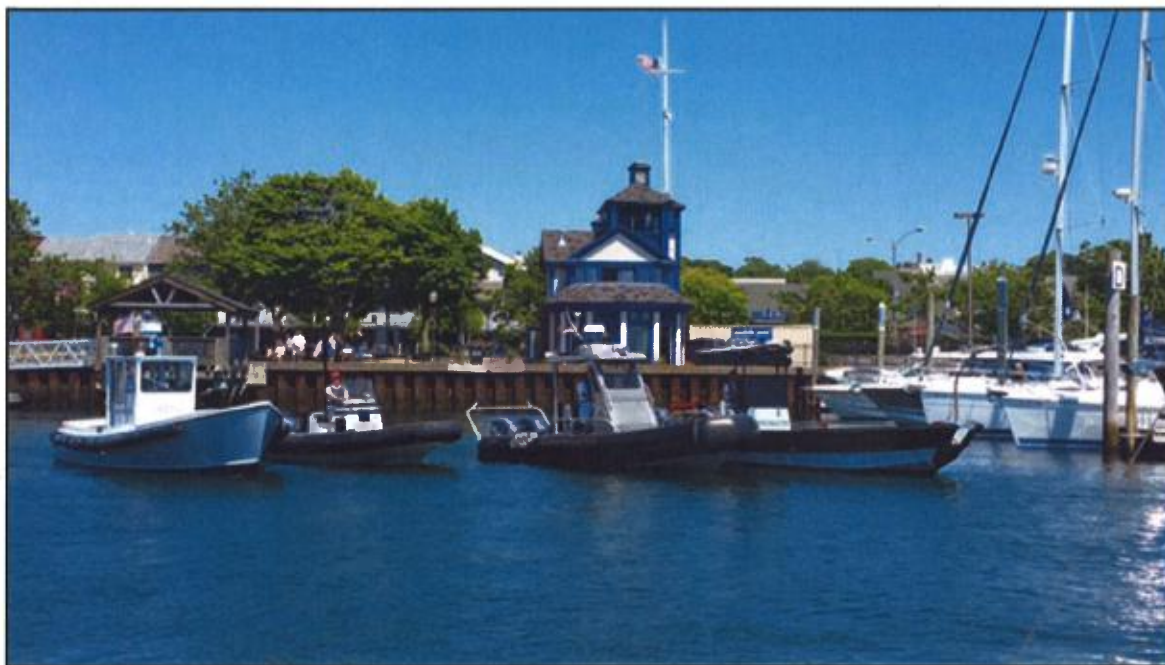
Our services will be rendered with courtesy, civility, and adherence to the provisions of the Constitution of the United States.



Harbor Management

Newport Harbormaster's Office

## Welcome to Newport Harbor



*Newport Harbormaster Fleet in front of the office*

Thanks for visiting the Harbormaster's webpage. Take a moment to explore the different tabs. You will find the following information:

- Contact Information
- Waiting List Procedures
- Transient Dockage
- Dinghy Dock Locations



**Still Have Questions? We are here to help. Click on the "Contact Information" tab to reach us.**

# Utilities



The **Department of Utilities** is comprised of two divisions, the **Water Division** and the **Water Pollution Control Division**. Our office is located at 70 Halsey Street and we can be reached at (401) 845-5600 or [by email](#). Both the Water Division and Water Pollution Control Division operate as enterprise funds of the City.

The Department of Utilities, although a City Department of the City of Newport, is regulated by state and federal agencies in addition to City policies and procedures. The management and operation of each Division is supported by the revenue received from its respective billings.

Certain City Departments provide services that are integral to the operation of the Department of Utilities; examples include the Finance Department and City Solicitor's Office. The City's costs associated for providing these services are allocated to both the Water Fund and Water Pollution Control Fund.

The **Water Division** operates and manages the source water reservoirs, treatment plants, storage tanks and distribution system. The City's water distribution system also services the Town of Middletown and a small portion of the Town of Portsmouth. We also sell water wholesale to the Portsmouth Water and Fire District and Naval Station Newport.

The **Water Division** is responsible for providing drinking water that meets standards established by the US Environmental Protection Agency (EPA) and the Rhode Island Department of Health (RIDOH). The Water Division is licensed by the RIDOH as a Public Water Supplier, License # 1592010. The Water Division is also required to report to the Rhode Island Water Resources Board.

The revenue and rate structure for the Water Division is regulated by the Rhode Island Public Utilities Commission. The Water Division staff is committed to providing our customers the safest and most reliable drinking water possible.

The **Water Pollution Control Division** is responsible for providing wastewater treatment for the residents of Newport. In addition we provide wastewater treatment on a wholesale basis to the Town of Middletown and Naval Station Newport. The Water Pollution Control Division also manages the storm drainage system within the City.

The waste water treatment facilities are operated and maintained in accordance with a service contract with Newport Water Services. The City and Newport Water Services are issued a Rhode Island Pollutant Discharge Elimination System Permit # RI0100293 to operate the wastewater facilities.

The sanitary sewer collection system and storm drainage system are operated and maintained by staff from the Water Pollution Control Division.

The sewer use charge is established by the City Council. Services for wastewater treatment for the Town of Middletown and Naval Station Newport are invoiced in accordance with contractual agreements. The

Water Pollution Control Division is responsible for operating the wastewater and storm drainage systems in accordance with regulations established by the US EPA and the Rhode Island Department of Environmental Management.

The Director of Utilities, Julia A. Forgue, PE, is responsible for the overall administrative management of the Department. Assisting the Director of Utilities is the Deputy Director of Engineering, Robert Schultz, Jr., PE. and the Deputy Director of Finance, William Yost, Jr.



## NEWPORT PUBLIC LIBRARY

Search our catalog (Encore)



[YOUR LIBRARY](#)

[LIBRARY SERVICES](#)

[READING](#)

[RESEARCH](#)

[TEENS @ NPL](#)

[KIDS](#)

[EVENTS](#)



### Library closed on Veterans Day

The library will be closed on Saturday, November 11 in observance of Veterans Day.



Filed Under: [NPL News](#)

[Wonder Book Celebration](#)

[November Adult Crafting Programs](#)



Friday, Nov. 10th @ 3:00pm Ages 6 - 12 Celebrate R.J. Palacio's book, Wonder, before it hits the big screen! Participate in several activities and help promote the book's message of being kind! You do not need to have read the book to ... [\[Continue reading\]](#)

---

Filed Under: [Kids](#), [NPL News](#)

## Meet the Author Series



Saturday, November 4, 2:00-3:00 pm Novelist Sara Baker will talk about her book The Timekeeper's Son. Saturday, November 18, 2:00-3:00 pm Heidi Chiavaroli will discuss her first novel Freedom's Ring. No registration needed. Held in the ... [\[Continue reading\]](#)

---

Filed Under: [NPL News](#)

## November Book Group Selections



Our book groups meet on Tuesday afternoons, Wednesday mornings and Thursday evenings and read both fiction and non-fiction. You're bound to find something to fit your reading tastes and schedule! For more information click ... [\[Continue reading\]](#)

---

Filed Under: [NPL News](#), [Uncategorized](#)



Ages 16+. Registration is required. November 8, 2017- 2:30 PM- Faux Stained Glass November 15, 2017- 2:30 PM- Photo Tile Coasters ... [\[Continue reading\]](#)

---

Filed Under: [NPL News](#)

## TEENS – Scan Your Head & Print It!



Yes, you read that right! Learn to use our 3D scanner to turn your head into a game piece, Christmas ornament for mom, amulet for a sweet heart or more. Ms. Becky is excited to teach you how so bring your buds and meet her in the Maker ... [\[Continue reading\]](#)

---

Filed Under: [NPL News](#)

## Personalized Reading List



Need help choosing what to read next? Let us help! Fill out our personalized reading list form and receive a list of books picked just for you! ... [\[Continue reading\]](#)

---

Filed Under: [NPL News](#)



NEWPORT  
RESTORATION  
FOUNDATION  
*Founded by Doris Duke*

- [Resources](#)
- [Calendar](#)
- [Shop](#)
- [Support](#)
- [Cart \(0\)](#)

<input type="text"/>	Search
----------------------	--------

- [Home](#)
- [Visit](#)
- [Preservation](#)
- [Exhibitions](#)
- [Programs](#)
- [About](#)

401-849-7300

	WHAT'S NEW
	Is your boiler ready for heating season?...
	Doris Duke's ca. 1968 calf-length boots by...
	Couldn't make #historyabovewater...
	Renoir at Rough Point: Knitting Together...
WHAT'S NEW TOURS PROGRAMS	

ROUGH POINT



WHITEHORNE HOUSE



PRESCOTT FARM





Tour Doris Duke's art-filled mansion and enjoy panoramic ocean views from the extensive grounds, designed by Frederick Law Olmsted. Open April to November.

[LEARN MORE](#)

[BUY TICKETS](#)

Relax in the lush city garden after seeing some of the finest examples of 18th-century Newport furniture in this beautifully restored Federal brick mansion.

[LEARN MORE](#)

[BUY TICKETS](#)

See early American history in a charming country setting featuring an 1812 windmill, historic buildings, gardens and walking trails.

[LEARN MORE](#)

#### NEWPORT HISTORY TOURS



Stroll Newport's historic neighborhoods with expert guides, a collaborative program of the Newport Historical Society and NRF.

[LEARN MORE](#)

#### GROUP TOURS

Overview and information about group tours around Newport and Rough Point... [LEARN MORE](#)



#### UPCOMING PROGRAMS

##### UnDecked Halls

Dec 2, 2017 10:00 am

##### UnDecked Halls

Dec 2, 2017 10:30 am

- [Home](#)
- [Visit](#)
- [Preservation](#)
- [Exhibitions](#)
- [Programs](#)
- [About](#)
- [Contact Us](#)
- [Privacy Policy](#)
- [Admin](#)

Touro 2.5 joomla

# TOURO SYNAGOGUE

NATIONAL HISTORIC SITE

*America's Oldest Synagogue  
Loeb Visitors Center  
Colonial Burial Ground*

## Visit



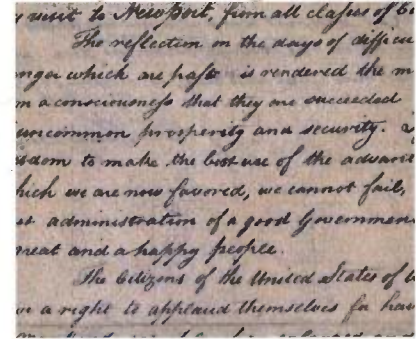
- [Tickets, Tours & Hours >>](#)
- [Directions & Parking >>](#)
- [Trip Planning >>](#)

## Congregation Jeshuat Israel



- [Prayer Services >>](#)
- [Life Cycle Events >>](#)
- [Membership >>](#)

## History & Learning



- [Touro Synagogue History >>](#)
- [Exploration and Exhibits >>](#)
- [Touro Synagogue Foundation >>](#)



Congregation  
Jeshuat Israel



Touro Synagogue  
Foundation



George Washington  
Institute for  
Religious Freedom

## George Washington's Letter to the Hebrews

The next scheduled day of George Washington's historic letter "To the Hebrews"

Donate Now » **Events**  [SEE CALENDAR](#)

[READ MORE >>](#)



[READ MORE >>](#)



Search this site ...

[Webmaster](#) | [Privacy Policy](#) | [Credits](#) | [Site Map](#)

Login

© 2011-2015 Congregation Jeshuat Israel, Touro Synagogue Foundation, George Washington Institute for Religious Freedom.  
All Rights reserved. Portions copyright 2008-2015 Heritage Muse, Inc.

- [The 21st Century Fund](#)
- [Volunteer](#)
- [Fellowship Program](#)
- [Career Opportunities](#)
- News
  - [Press](#)
  - [What's Happening](#)
  - [Staff Blogs](#)
- [Shop](#)
  - [Shop Online](#)
  - [Wedding Favors & Bridal Party Gifts](#)

## Colony House



The Colony House. Photo by Aaron Usher III.

The Newport Colony House is the fourth oldest statehouse still standing in the United States. It was designed by builder/architect Richard Munday, who also designed Trinity Church and the Seventh Day Baptist Meeting House in Newport. The Colony House was built between 1736 and 1739 by Benjamin Wyatt, and tradition maintains that a great number of African-Americans were employed in its construction.

The building replaced a smaller wooden courthouse built about 1687. The Colony House was constructed as part of the movement to bring formal town planning to Newport, which until then had developed in haphazard fashion. It was intended to help transform the Parade, as Washington Square was then named, into an elegant public space in keeping with the traditions of English cities. The design of the Colony House is derived from the English Georgian style popularized by the architect Sir Christopher Wren, but its floor plan follows the customary layout of English town or guild halls, which often had an open marketplace on the ground floor and civic offices on the second floor.

Many important events associated with the shaping of the United States occurred at the Colony House. In 1761, the death of George II and the ascension of George III was announced from the balcony. In 1766, citizens of Newport celebrated the repeal of the Stamp Act in and around the Colony House. In January and May of 1773, the building served as the meeting site of the Commission of Inquiry into the burning of the British revenue schooner Gaspee by Patriots in 1772. On July 20, 1776, Major John Handy read the Declaration of Independence from the front steps. During the British occupation of Newport from 1776 to 1779, the Colony House was used as a barracks.



Second floor of the Colony House. Photo by Aaron Usher III.

After liberating Newport from the British, the French used the building as a hospital. It is often said that a French chaplain celebrated the first public Roman Catholic mass in Rhode Island in the Colony House, although there is no physical evidence of that. In 1781, the Great Hall on the first floor was the location of a banquet given by General Rochambeau to honor George Washington. Throughout the 19th century, the Colony House was used in May of each year for "Lecture Day" festivities. On this day, the results of the Rhode Island April elections were announced, the General Assembly convened ceremonially, and officials were inaugurated. Visitors from all over Rhode Island came to Newport to participate in victory celebrations, political negotiations, and party conflicts. Newporters considered it a more important holiday than Christmas.

The Colony House served as the primary state house of Rhode Island and Providence Plantations from its completion in 1739 until 1901, when the new state house in Providence opened. From 1901 to 1926 it was the Newport County Courthouse. Between 1926 and 1932, the building was restored by architect

Norman Isham, who simultaneously worked on two other nearby colonial buildings: The Brick Market and the Wanton-Lyman-Hazard House. The Colony House contains a portrait of George Washington, painted by Gilbert Stuart. In 1962, the building was designated a National Historic Landmark.

The Colony House is owned by the State of Rhode Island and managed by the Newport Historical Society.

### Rent the Colony House for your next event.



### Contact Us

Newport Historical Society  
82 Touro Street  
Newport RI 02840

401.846.0813

401.846.1853



### Search

Search for:

### Upcoming Events

- [Roques & Scoundrels Walking Tour](#) on November 17, 2017 10:30 AM
- [Discover Colonial Newport Walking Tour](#) on November 18, 2017 10:30 AM
- [Bricks, Sticks & The Vernon House](#) on November 18, 2017 11:00 AM
- [Golden to Gilded Walking Tour](#) on November 19, 2017 10:30 AM
- [Road to Independence Walking Tour](#) on November 20, 2017 10:30 AM

### Archives

Archives

### Links

- [Newport Antiques Show](#)
- [Newport History Tours](#)
- [Newport History Videos](#)
- [Revolution House](#)
- [Rhode Island Colonial Charter: 1663-2013](#)
- [Spectacle of Toleration](#)

### Recent Tweets

- Last week [@TheNewportDaily](#) visited with our Executive Director and local bookbinder James Courier and discussed the... <https://t.co/hOIIQF5tde> about 1 hours ago
- Support us for #MuseumStoreSunday! Sign up now for your own custom silhouette- great gift idea!... <https://t.co/i2ZpijnfsI> about 4 days ago
- RT [@WhatsUpNewp](#): Replica of Volume of Newport's African Union Society Records Produced <https://t.co/5wHQ9vol0w> [@NewportHistory](#) about 4 days ago

### Recent Photos



# Home

The White Horse Tavern, est. 1673

26 Marlborough St • Newport, RI • 401-849-3600

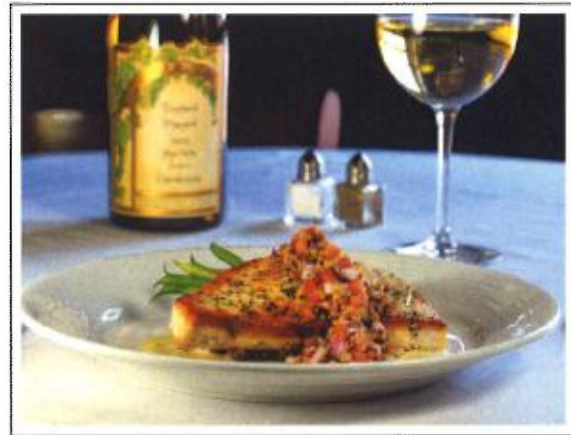
"Best Wine List"

**Newport Life Magazine**

From Local Farms and Waters since 1673

Remember our Dress Code: Business Casual, including collared shirts. Jackets are not required.

At The White Horse Tavern we strive to create a fresh, contemporary culinary experience in America's Oldest Restaurant.



Like generations before us, we serve the freshest fish, clams and lobsters from Narragansett Bay along with just-picked produce from local Rhode Island's farms. We embrace RI's vibrant food scene to bring you the very best artisan cheeses, honeys, prime cuts of beef and local fish right off the boat – all in a Colonial tavern that's been serving America for over 350 years. So join us for a taste of 21st century Rhode Island in our 17th century Tavern; You won't be disappointed!

Proper Dress Required: "Country Club" or "Business Casual" please. Jackets are not

required but collared shirts are expected. Please remove hats in our establishment and mobile phones should be turned off so as not to disturb your fellow diners. Thank you!

## Happy Holidays from the White Horse Tavern!

from **White Horse Hospitality**

00:52



## The White Horse Tavern Awaits You

02:14



### White Horse Store



Welcome to the White Horse Tavern Gift Shop. Offering a

### Book Your Event

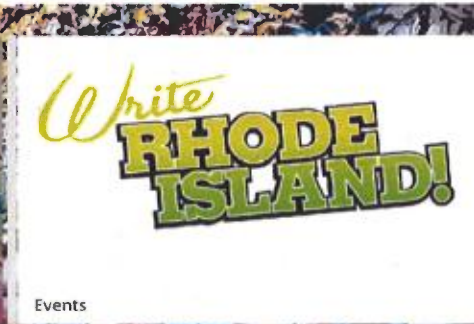
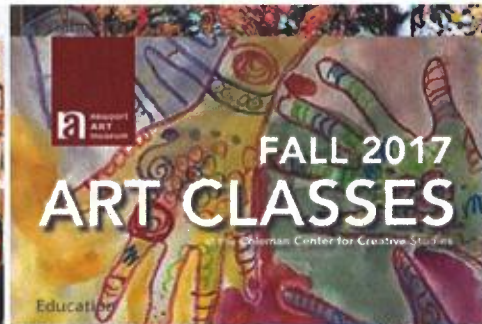


Elegant food and personal service for corporate and family

### Make a Reservation



**HOURS**  
**M-TH:**



**Newport ART Museum**  
@NewportArtMuse

Abstract Art-Making and Art + Design  
Film Festival at the Museum! -  
[mailchi.mp/newportartmuse...](http://mailchi.mp/newportartmuse...)

Nov 7, 2017

**Newport ART Museum**  
@NewportArtMuse  
latest tweets

share



© 2014 Newport Art Museum and Art Association | Privacy Policy | Design: Malcolm Gear Designers

EXHIBITIONS COLLECTION EDUCATION VISIT PROGRAMS & EVENTS

SEARCH CALENDAR CAREERS JOIN GIVING FACILITY RENTAL PRESS ABOUT

## **Composites Technology**

6-month program enrolls in March and September

**Learn more (composite-technology)**

TRAINING  
(/PROGRAMS/COMPOSITE-  
TECHNOLOGY/TRAINING-  
COMPOSITE-  
TECHNOLOGY/)

CAREERS  
(/PROGRAMS/COMPOSITE-  
TECHNOLOGY/CAREERS-  
COMPOSITE-  
TECHNOLOGY/)

Fabricating with modern materials, techniques and processes is the focus of the Composites Technology program at IYRS. Composite parts, products and structures are lighter, faster and stronger, and can be found across manufacturing industries such as aviation, aerospace, marine, medical, automotive, athletics and more.

## **Marine Systems**

6-month program enrolls in March and September

**Learn more (marine-systems)**

TRAINING  
(/PROGRAMS/MARINE-  
SYSTEMS/TRAINING-  
MARINE-  
SYSTEMS/)

CAREERS  
(/PROGRAMS/MARINE-  
SYSTEMS/CAREERS-  
MARINE-  
SYSTEMS/)

IYRS' Marine Systems program is an immersive learning experience with a curriculum guided by the needs of industry-leading companies. Covered over six-months are techniques and skills needed to maintain and repair all essential marine systems, as well as career planning, key certification exam preparation and real-world externship experience.



## **Boatbuilding & Restoration**

20-month program enrolls each September

**Learn more (boatbuilding-restoration)**

### **TRAINING**

(/PROGRAMS/BOATBUILDING-  
RESTORATION/TRAINING-  
BOATBUILDING-  
RESTORATION/)

### **CAREERS**

(/PROGRAMS/BOATBUILDING-  
RESTORATION/CAREERS-  
BOATBUILDING-  
RESTORATION/)

IYRS' Boatbuilding & Restoration program is a comprehensive two-year program which combines the time-honored craft of wooden boatbuilding with the modern problem solving skills to succeed in today's thriving job market. IYRS' curriculum is regarded as the best in the industry, training the next generation of master craftspeople.

## **Digital Modeling & Fabrication**

9-month program that enrolls in September

**Learn more (dmf)**

### **TRAINING**

(/PROGRAMS/DMF/TRAINING/)

### **CAREERS**

(/PROGRAMS/DMF/CAREERS/)

Digital Modeling & Fabrication represents a unique & innovative approach to design education. An immersive 9-month curriculum exposes students to all critical elements of product & industrial design, from design thinking and prototyping to fabricating and machining, all in a brand new 20,000 square foot state-of-the-art build studio.



Naval Station Newport

## Commander, Navy Installations Command Notification

WINTER UNIFORM SHIFT - Navy region commanders have announced winter uniform shifts for their respective areas of responsibility.

For more information: [click here](#).

## Welcome to Naval Station Newport

A World-Class Center of Learning Excellence

Twitter: [@NAVSTANEWPORTRI](#)

Facebook: <https://www.facebook.com/NAVSTANewport>

The command headquarters is co-located with Personnel Service Detachment, Housing and the Joint Personal Property office to make your arrival to Naval Station Newport easier.

## WELCOME

---

### THE NAVY IN NEWPORT

Welcome to Naval Station (NAVSTA) Newport—home to 50 Navy, Marine Corps, Coast Guard and US Army Reserve commands and activities. Newport is the Navy's premier site for training officers, officer candidates, senior enlisted personnel and midshipman candidates, as well as testing and evaluating advanced undersea warfare and development systems.

Naval personnel assigned to Newport come from all parts of the United States and many free nations of the world. The naval installation mirrors a miniature America, flavored with an international touch. Both its military and civilian personnel get deeply

involved in local community affairs and play active roles in local churches, service clubs, Sea Cadets, Boy Scouts and other popular youth activities.

The Navy's economic impact in Rhode Island is legendary. For many years, it was the state's largest single employer—both in terms of personnel and payroll—and is still the largest single employer in Newport County, and third overall in the state.

Approximately 5,800 employees work at the 50 various commands located on Naval Station with an additional 17,000 students annually passing through one of the many schools on base. Naval Station Newport has undergone a period of significant growth as a result of the 2005 Base Realignment and Closure recommendations. NAVSTA is now home to the Navy Supply Corps School, the Center for Service Support and the U.S. Marine Corps Aviation Logistics School, all formerly located in Athens, Ga.

Newport is also the home of the Navy's most prestigious educational institution, the Naval War College. As the oldest such institution in continuous existence anywhere in the world, the college is organized to pursue and integrate both academic and research endeavors. Each year approximately 600 outstanding mid-career level officers of the Navy, all other U.S. services, civilian federal agencies and international naval officers come here to pursue a rigorous 10-month course of postgraduate studies following in the footsteps of such notable War College graduates as Fleet Admirals Chester W. Nimitz, Ernest J. King and William "Bull" Halsey; Admiral Raymond Spruance; Ambassador Christopher R. Hill, Assistant Secretary of State for East Asian Affairs; General Michael Hagee, former Commandant, U.S. Marine Corps; Rear Admiral Alan B. Shepard, first American in space; General John M. Shalikashvili, former Chairman, Joint Chiefs of Staff; Admiral Robert J. Fallon, Commander, U.S. Central Command; and Admiral James G. Stavridis, Commander, U.S. Southern Command.

Over half the graduates of the college's senior international course, the Naval Command College, have gone on to become flag or general officers with many being chosen to head their respective services. The college's Center for Naval Warfare Studies leads the Navy in its maritime strategic thought. The Center's War Gaming facility conducts some 60 major war games annually in support of the college's research efforts, as well as fleet and Department of Defense requirements.

Officer Training Command Newport (OTCN) is the largest officer accessions point in the Navy with a mission to prepare Sailors and Marines through enduring professional and personal development to lead as officers in the fleet. OTCN currently delivers five separate Officer Accession/Indoctrination programs and provides oversight to three of the Navy's technical training facilities.

Another important educational institution is the Surface Warfare Officers School Command (SWOSCOLCOM). This command trains surface warfare officers from the time they are commissioned until they have command at sea.

Newport also has the Naval Justice School, which trains personnel of the Defense Department in military law and related matters.

Another large and prestigious command is the Naval Undersea Warfare Center Division Newport (NUWCDIVNPT), the Navy's principal research, development, test and evaluation center for submarine weapons systems. With headquarters in Newport, R.I., its research facilities stretch from Connecticut to the Bahamas.

The Naval Health Clinic New England—Newport provides general clinical outpatient services for authorized beneficiaries and cooperates with military and civilian authorities in matters of health, sanitation, disaster and other emergencies.

Other commands and activities in Newport include the Command Leadership School; Defense Institute of International Legal Studies; Explosive Ordnance Disposal Mobile Unit TWELVE Detachment, Newport; Naval Academy Preparatory School; Naval Facilities Engineering Command Norfolk—Newport Detachment; Navy Band Northeast; Senior Enlisted Academy; Seventh Naval Construction Regiment; and Space and Warfare Systems Center, Charleston, Newport Technical Services Branch.

Welcome Aboard!

## Interactive Map

---

