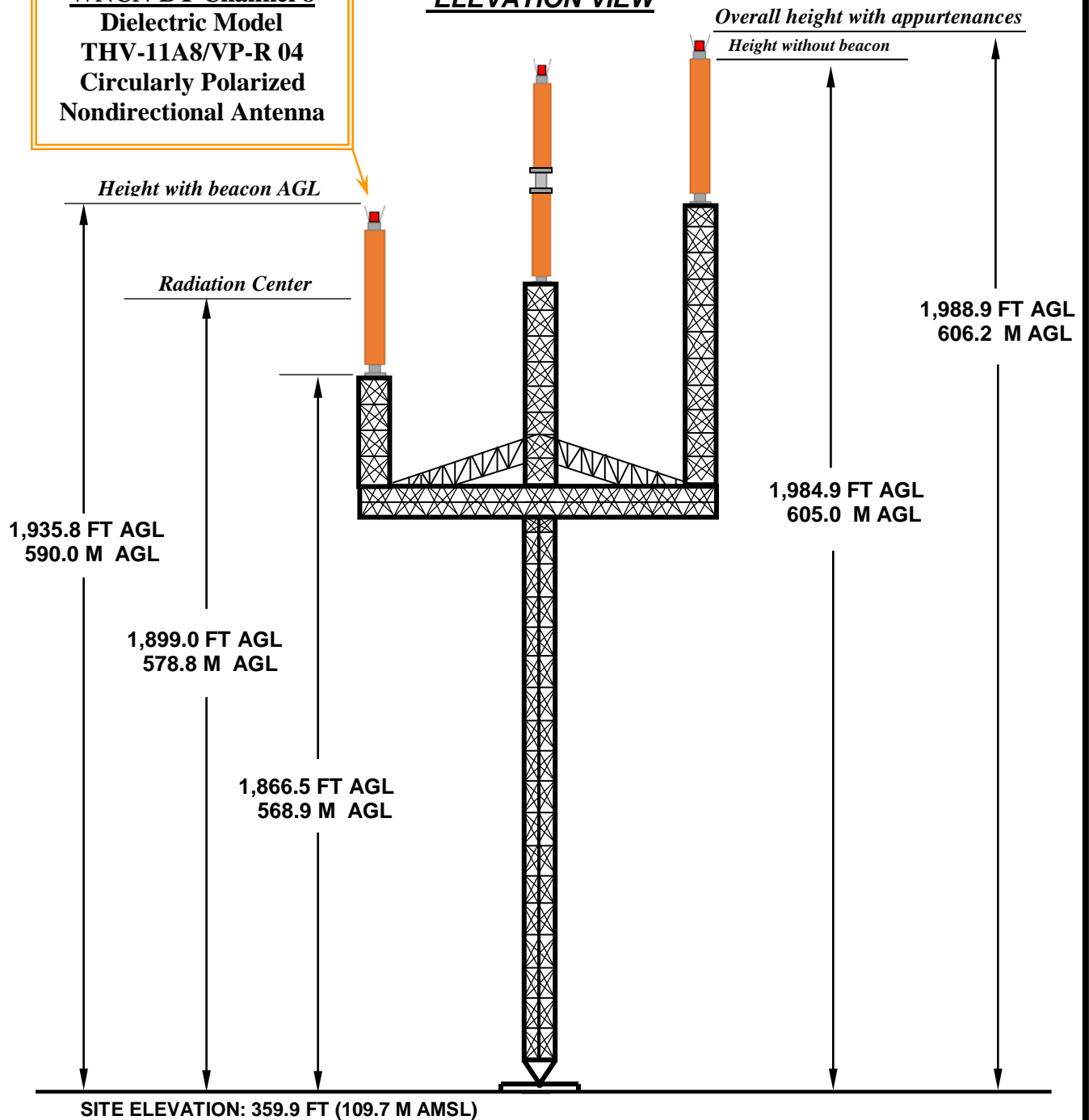


**WNCN-DT Channel 8**  
**Dielectric Model**  
**THV-11A8/VP-R 04**  
**Circularly Polarized**  
**Nondirectional Antenna**

# **WNCN-DT** **ELEVATION VIEW**



**OVERALL HEIGHT AGL:** 606.2 M  
**OVERALL HEIGHT AMSL:** 715.9 M  
**RADIATION CENTER AGL:** 578.8 M  
**RADIATION CENTER AMSL:** 688.5 M  
**RADIATION CENTER HAAT:** 607.8 M  
**AVG OF ALL NON-ODD RADIALS:** 80.7 M  
**SITE HAAT:** 29.0 M

## **COORDINATES (NAD 83):**

**N. LATITUDE** 35° 40' 29"  
**W. LONGITUDE** 78° 31' 39"

**Antenna Structure Registration Number:**  
 1027322

**NOTE: NOT TO SCALE**

**Kessler and Gehman Associates, Inc.**



Consultants • Broadcast • Wireless  
 507 NW 60th Street, Suite C  
 Gainesville, FL 32607  
[www.kesslerandgehman.com](http://www.kesslerandgehman.com)

**WNCN-DT CHANNEL 8**

*Goldsboro, North Carolina*

20171029

**EXHIBIT 1**