

Exhibit 13.1

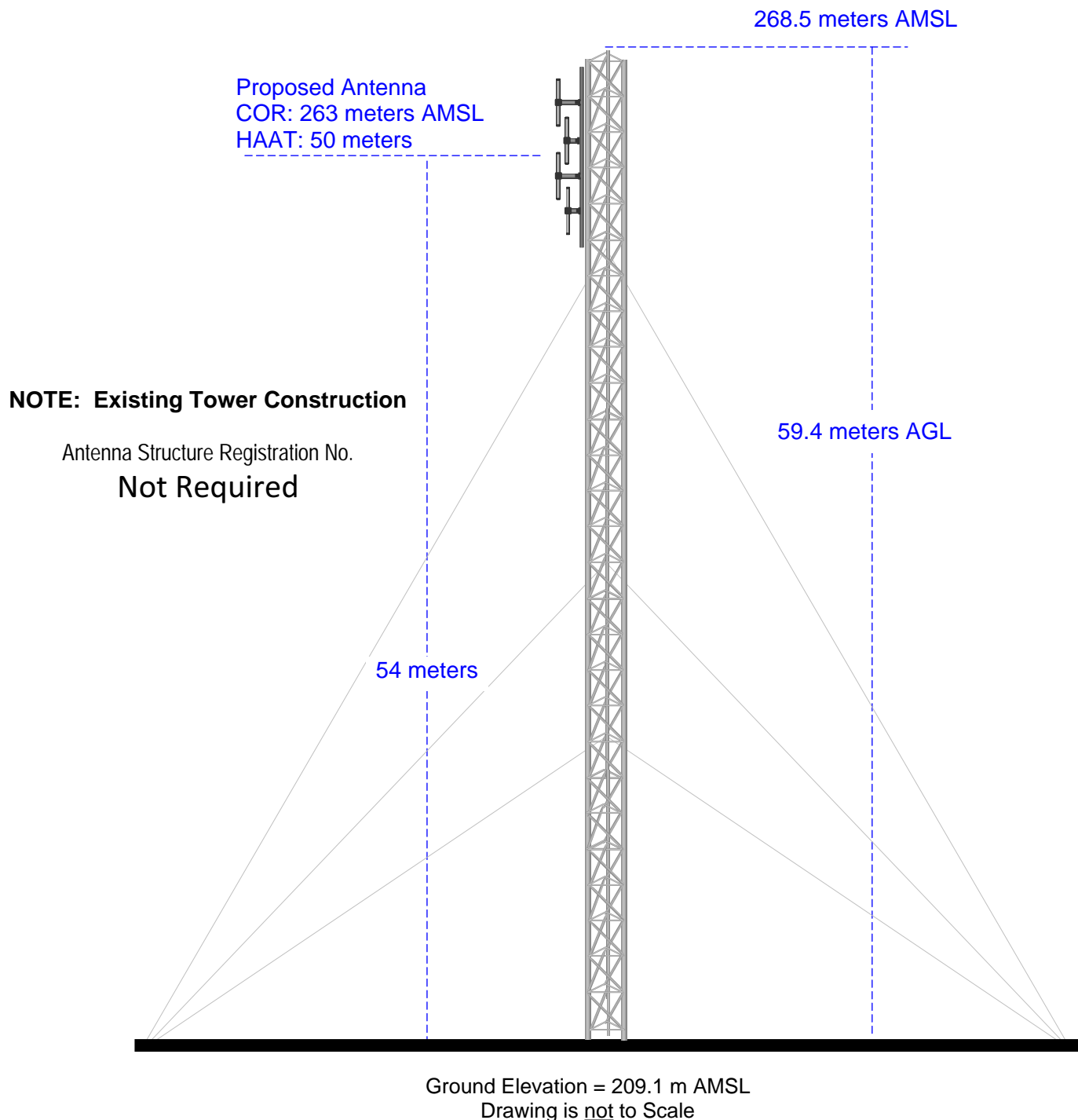
Vertical Plan of Antenna System

The site is located at 2849 Woodward Ave, S.W.,
the city of Wyoming, Kent County, Michigan.

Site Location (NAD 27)

NL: 42° 54' 43"

WL: 85° 41' 00"



MUNN-REESE, INC.

Broadcast Engineering Consultants
Coldwater, MI 49036

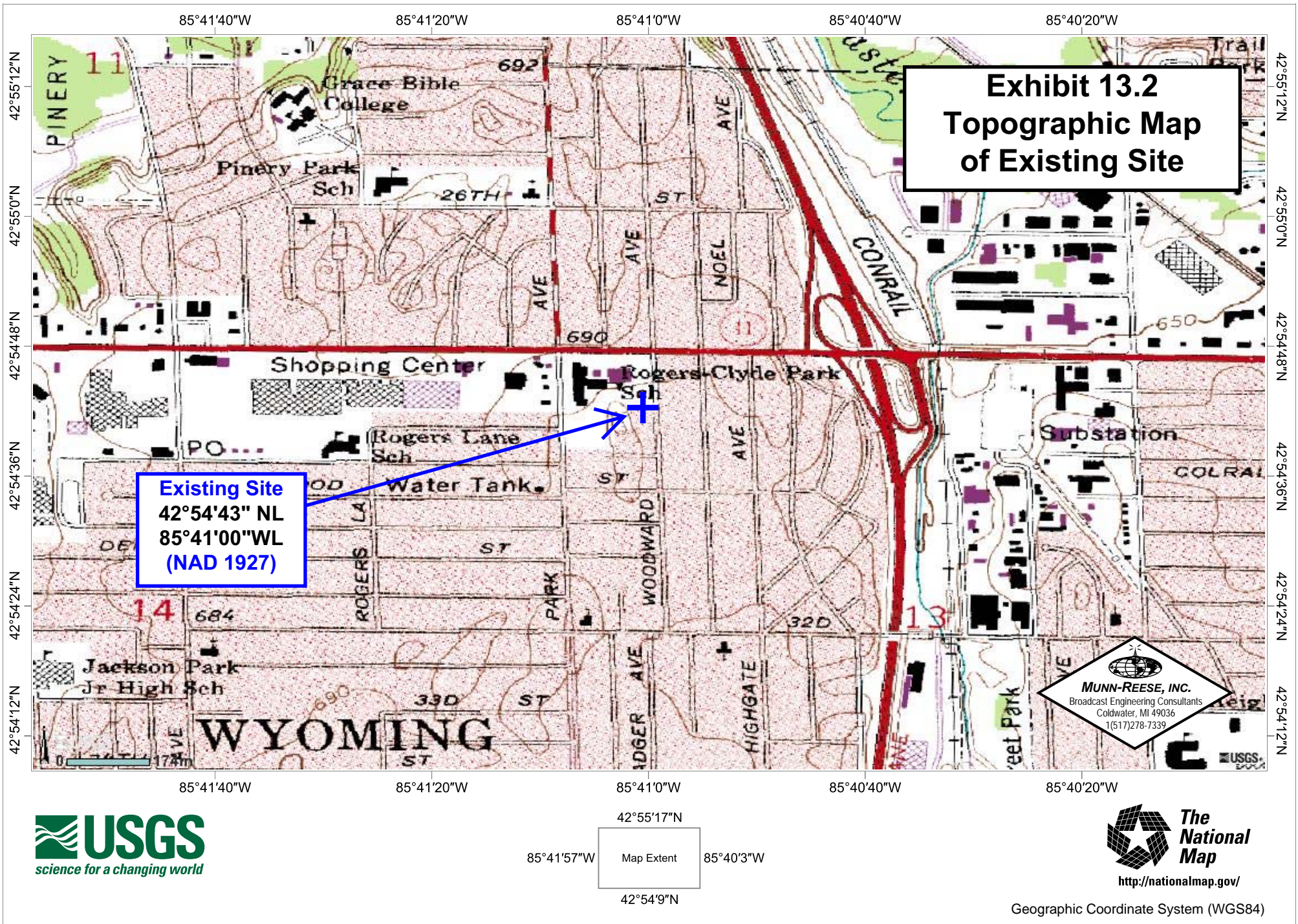


Exhibit 13.3

Proposed FM Operating Specifications

Applicant: Grand Rapids Cable Access Center

Call: WYCE(FM)

City of License: Wyoming, MI

Frequency: 88.1 MHz **Channel:** 201B1 **ERP:** 10.0 kW **HAAT:** 50 M

Transmitter Location: 2849 Woodward Ave. S.W.

City: Wyoming

County: Kent

State: Michigan

Site Coordinates: NL: 42° 54' 43" / WL: 85° 41' 00"

Tower Registration Number: Not Required

Proposed Operation: Class B1

Effective Radiated Power: 0.001 kW (H) 10.0 kW (V)

Height of Antenna Radiation Center Above:

	<u>Average Terrain</u>	<u>Mean Sea Level</u>	<u>Ground</u>
Horizontal	50 meters	263 meters	54 meters
Vertical	50 meters	263 meters	54 meters

Elevation of Tower Site : 209.1 Meters AMSL

Overall Height of Structure Above Ground : 59.4 Meters AGL

Overall Height of Structure Above Mean Sea Level: 268.5 Meters AMSL

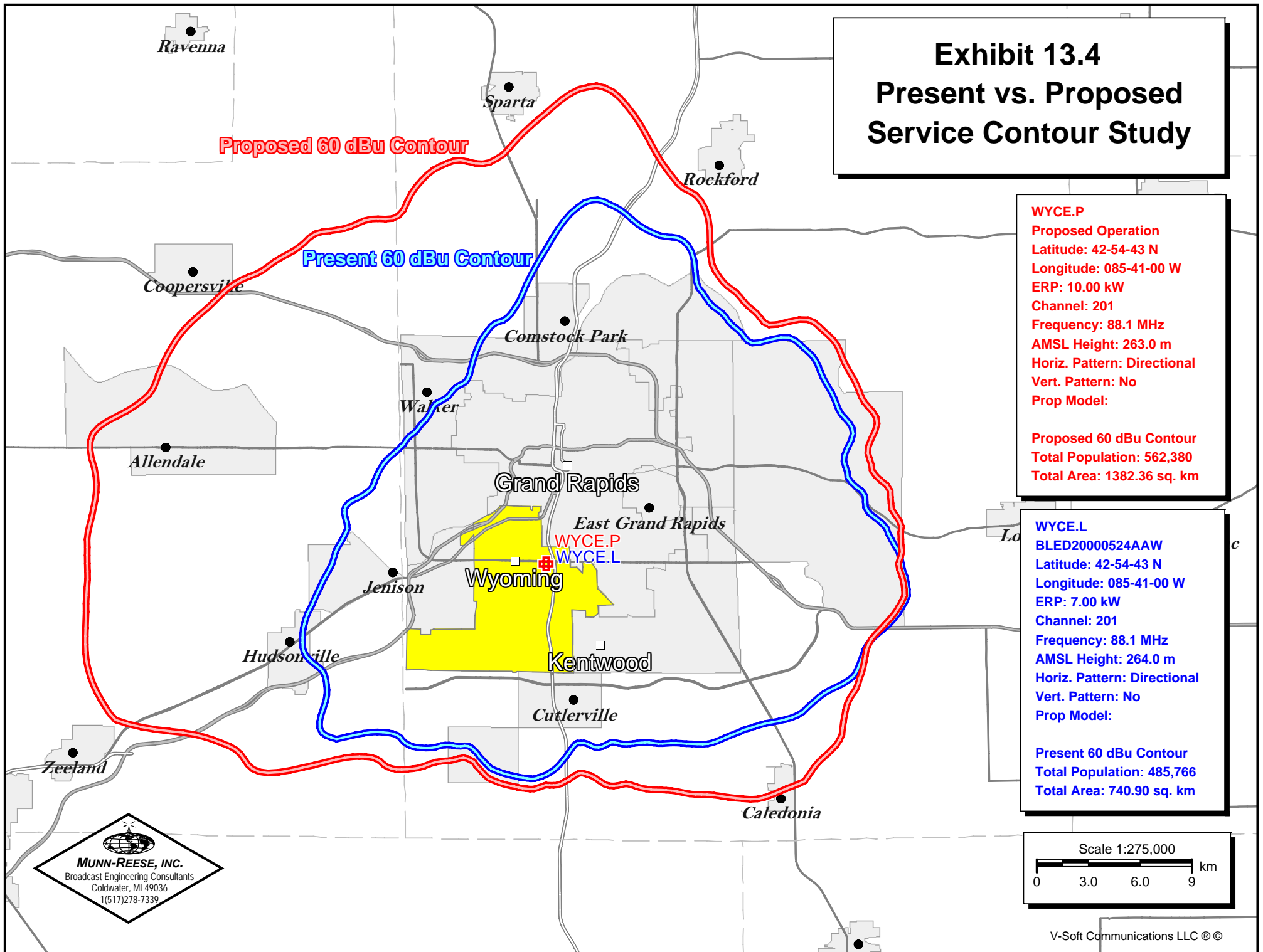
Exhibit 13.4 Present vs. Proposed Service Contour Study

WYCE.P
Proposed Operation
Latitude: 42-54-43 N
Longitude: 085-41-00 W
ERP: 10.00 kW
Channel: 201
Frequency: 88.1 MHz
AMSL Height: 263.0 m
Horiz. Pattern: Directional
Vert. Pattern: No
Prop Model:

Proposed 60 dBu Contour
Total Population: 562,380
Total Area: 1382.36 sq. km

WYCE.L
BLED20000524AAW
Latitude: 42-54-43 N
Longitude: 085-41-00 W
ERP: 7.00 kW
Channel: 201
Frequency: 88.1 MHz
AMSL Height: 264.0 m
Horiz. Pattern: Directional
Vert. Pattern: No
Prop Model:

Present 60 dBu Contour
Total Population: 485,766
Total Area: 740.90 sq. km



Scale 1:275,000
0 3.0 6.0 9 km