

**FM Translator K285FN
Kennewick West, WA Channel 285D
Minor Modification Allocation Study
June 2007**

The instant application proposes modification of the K285FN authorization, while maintaining overlap between the authorized and proposed 60 dBu contours. Therefore, this application qualifies as a minor change.

The attached spacing study shows the spacing between the proposed translator site and the location of cochannel and adjacent channel stations and proposals. This study was made with the Commission's Class A spacing requirements, and individual situations were examined to determine the lack of prohibited contour overlap per the requirements of §74.1204 of the Rules. The proposed facility complies with the Commission's Rules for protection of FM broadcast stations and FM translators as outlined in §74.1204.

The proposed translator transmitter site is located within the licensed 60 dBu protected contours of second-adjacent-channel station KONA-FM287C Kennewick and third-adjacent-channel station K282AA Kennewick. The attached transmitter site map depicts the 100 dBu Free Space contour from the proposed facility as 306 meter radius circle. There is no permanent population within this area, as it encompasses only the transmitter sites on top of Badger Mountain. Therefore, no populated areas will be affected and the proposed facility is believed to satisfy the requirements of §74.1204(d) with respect to KONA-FM and K282AA.

The attached spacing study demonstrates compliance with §73.207 of the Commission's Rules regarding spacing restrictions to stations which are 53 or 54 channels removed from the proposed operation.

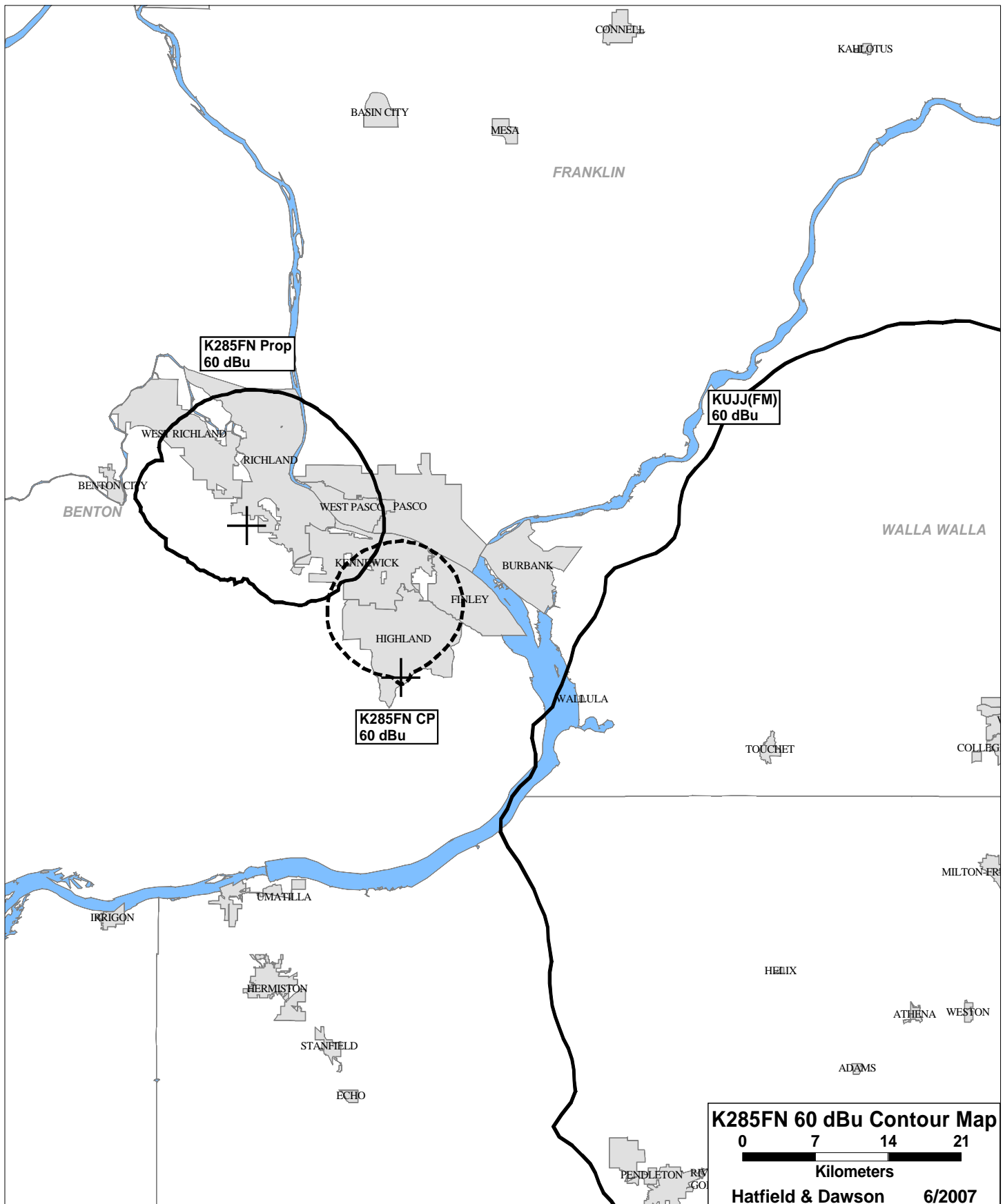
=====

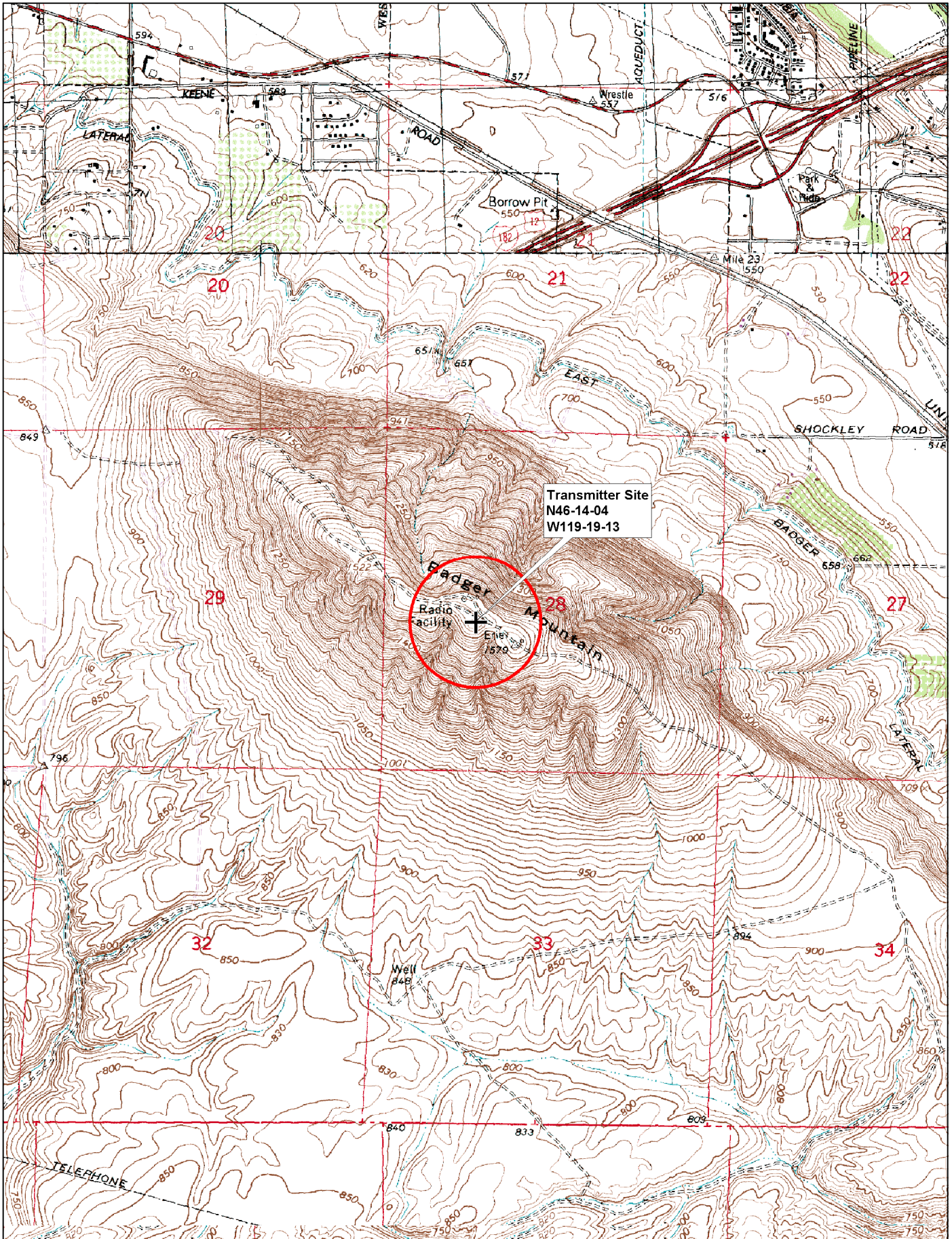
SEARCH PARAMETERS FM Database Date: 070530

Channel: 285A 104.9 MHz
 Latitude: 46 14 4
 Longitude: 119 19 13
 Safety Zone: 32 km
 Job Title: K285FN AT BADGER MTN

Call Status	City St	FCC File No.	Channel Freq.	ERP(kW) HAAT(m)	Latitude Longitude	Bearing deg-True	Dist (km)	Req (km)
NEW-T APP	KENNEWICK WA	BNPFT-030317ELA	231D 94.1	0.030 195.0	46-08-48 119-05-59	119.8	19.62 0.00	0 TRANS
NEW-T APP	KENNEWICK SOUTH WA	BNPFT-030313AGF	231D 94.1	0.050 258.0	46-09-43 119-09-12	122.0	15.20 0.00	0 TRANS
K282AA LIC	KENNEWICK, ETC. (OR) WA	BRFT-840723ND	282D 104.3	0.274 525.0	46-06-15 119-07-46	134.5	20.66 0.00	0 TRANS
KCMB LIC	BAKER OR	BLH-880719KB	284C 104.7	100.000 532.0	45-07-26 117-46-48	135.3	172.15 7.15	165 CLOSE
K285FN CP	KENNEWICK WEST WA	BNPFT-030829AYF	285D 104.9	0.011 540.0	46-06-13 119-07-44	134.6	20.74 0.00	0 TRANS
NEW-T APP	MABTON WA	BNPFT-030317IUF	285D 104.9	0.062 406.0	46-07-36 120-00-12	257.4	54.08 0.00	0 TRANS
KEEH LIC	SPOKANE WA	BLD-021121AAW	285C1 104.9	10.500 472.0	47-34-45 117-17-51	45.0 SS	214.71 14.71	200 CLEAR
NEW-T APP	SUNNYSIDE WA	BNPFT-030317HAA	285D 104.9	0.250 68.0	46-14-30 119-54-47	271.2	45.73 0.00	0 TRANS
VAC	UNION GAP WA	RM-11063	285A 104.9	0.000 0.0	46-31-48 120-27-18	291.1	93.27 -21.73	115 SHORT
KONAaux LIC	KENNEWICK WA	BLH-940812KZ	287C 105.3	10.000 301.0	46-05-51 119-11-30	146.9	18.18 0.00	0 AUX
KONA-FM LIC	KENNEWICK WA	BLH-940525KA	287C 105.3	100.000 347.0	46-05-51 119-11-30	146.9	18.18 -76.82	95 SHORT

44444 END OF FM SPACING STUDY FOR CHANNEL 285 44444





**FM Translator K285FN
Kennewick West, WA Channel 285D
Minor Modification NIER Study
June 2007**

Facilities Proposed

The proposed operation will be on Channel 285D (104.9 MHz) with an effective radiated power of 19 Watts. Operation is proposed with an antenna to be mounted on an existing structure. The FCC Antenna Structure Registration Number is #1028315.

NIER Calculations

Section 1.1307(b)(1) of the Commission's Rules exempts FM translators and boosters operating with an effective radiated power of 100 Watts or less from the requirement to submit an Environmental Assessment to determine compliance with FCC specified guidelines for human exposure to radiofrequency radiation. The applicant proposes operation with an effective radiated power of 38 Watts (19 Watts H + 19 Watts V) and therefore no calculations have been submitted. Nonetheless, public access to the site is restricted and all station personnel and contractors are required to follow appropriate safety procedures, including turning off the transmitter if necessary, prior to commencing work on the antenna tower.