

Larry H. Will, P.E.

Broadcast Engineering

1055 Powderhorn Drive
Glen Mills, PA 19342-9504

PH (610) 399-1826
E-Mail lhwill@verizon.net

MBC GRAND CORPORATION

APPLICANT FOR A

**MINOR MODIFICATION OF CONSTRUCTION PERMIT BXPH-
20100830ABP FOR**

KSTR-FM, CHANNEL 241

Montrose, Colorado

FCC FAC ID 21629

MINOR MODIFICATION TO A CONSTRUCCION PERMIT

FCC FORM 301 EXHIBIT 26

September 26, 2011

MBG GRAND BROADCASTING COMPANY, INCORPORATED

MINOR MODIFICATION TO A CONSTRUCTION PERMIT

FOR AN AUXILIARY FACILITY FOR KSTR-FM

Montrose, Colorado

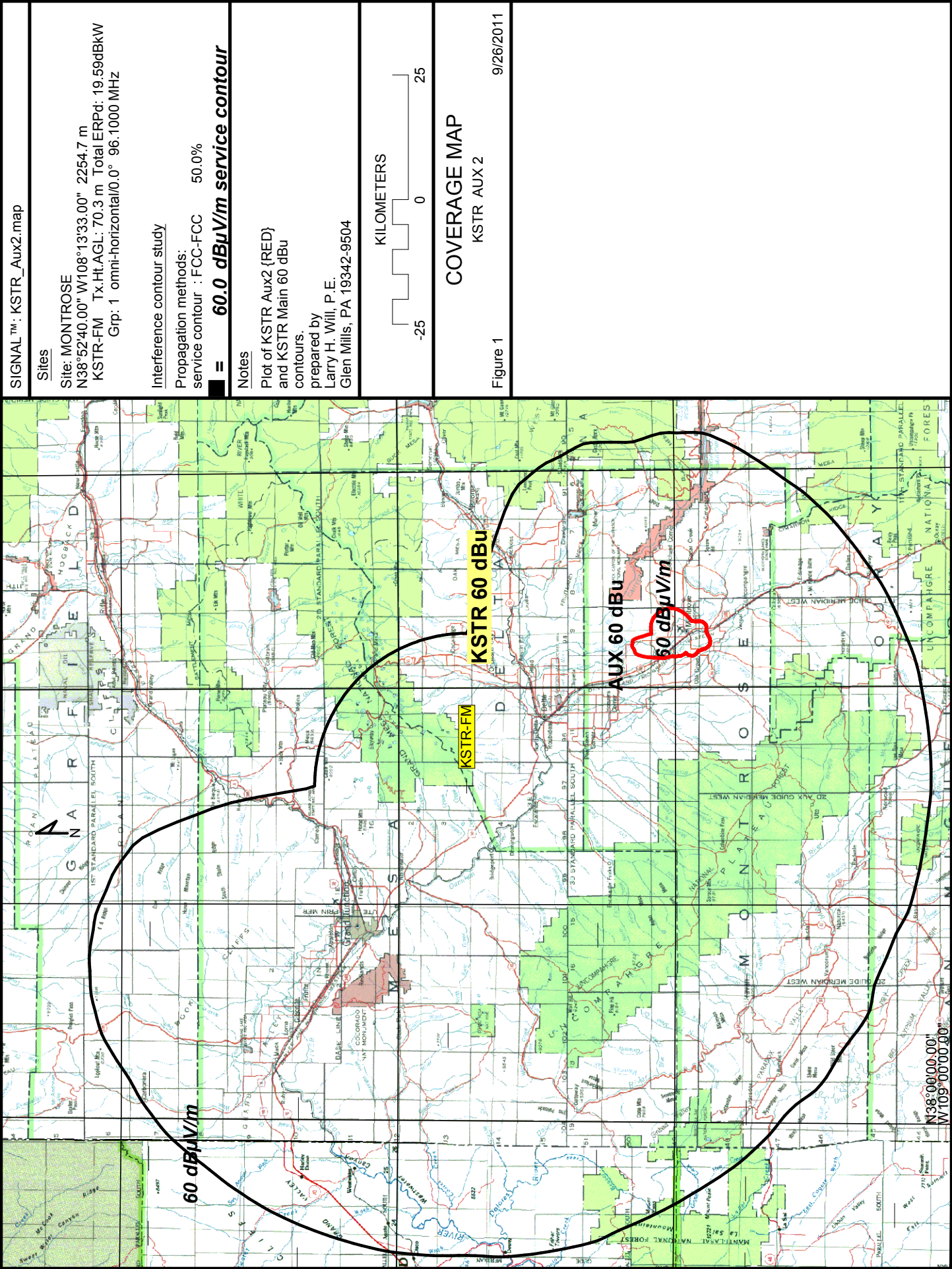
FCC FAC ID 21629

FCC FORM 301 - ENGINEERING EXHIBIT 26

AUXILLARY FACILITY COVERAGE, INTERFERENCE, USE OF DIRECTIONAL ANTENNA, AND WAIVER OF 73.316(b)(2) and 73.316(c)(2)(viii), IF NEEDED

The instant application is submitted to modify the existing Construction Permit (BXPB-20100830ABP) to changing the proposed transmitter location by approximately 50 feet, change antenna supporting structure, change ERP and HAAT, and specify a directional antenna that is not used to protect any other facility as discussed in 73.316(b)(2).

In addition, because the antenna orientation and directivity is not required for the protection of any other facility, we request a waiver, if needed, to eliminate a Construction Permit Special Condition to employ a Licensed Surveyor to confirm the antenna orientation (73.316(c)(2)(viii)). As shown by Figure 1 herein, the instant auxiliary facility 60 dBu contour is wholly contained within the main station 60 dBu contour making protection of other stations and thus requiring including a certified Surveyor statement with the covering License application moot. In addition, the proposed Scala CA-5-FM/CP/RM antenna has a published standard pattern that is widely available. However, we are including the Scala standard data in Form 301 Tech Box 12 for completeness.



CA5-FM/CP/RM

FM YAGI ANTENNA

6 dBd gain
88 to 108 MHz
Circularly polarized

The Scala CA5-FM/CP/RM is a ruggedly built yagi antenna, designed for professional FM transmit and receive applications.

Like all Scala antennas, the CA5-FM/CP/RM is made of the finest materials resulting in superior performance and long service life.

The CA5-FM/CP/RM may be used stand-alone or in stacked arrays for higher gain, increased side-lobe suppression, or custom azimuth patterns.

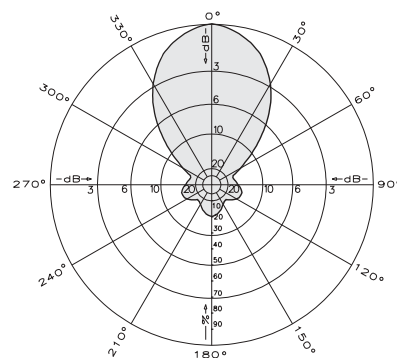
Specifications:

Frequency range	Any specified FM channel 88 to 108 MHz
Gain	6 dBd
Impedance	50 ohms
VSWR	< 1.5:1
Polarization	Circular
Front-to-back ratio	>14 dB
Maximum input power	250 watts
Azimuth pattern	61 degrees (half-power)
Elevation pattern	61 degrees (half-power)
Connector	N female
Weight	35 lb (15.9 kg)
Dimensions	79 x 56 x 50.8 inches maximum (2007 x 1422 x 1290 mm)
Equivalent flat plate area	2.84 ft ² (0.264 m ²) maximum
Wind survival rating*	120 mph (194 kph)
Shipping dimensions	84 x 13 x 8 inches maximum (2134 x 330 x 203 mm)
Shipping weight	38 lb (8.2 kg) maximum
Mounting	For masts of 2.375 inches (60 mm) OD.

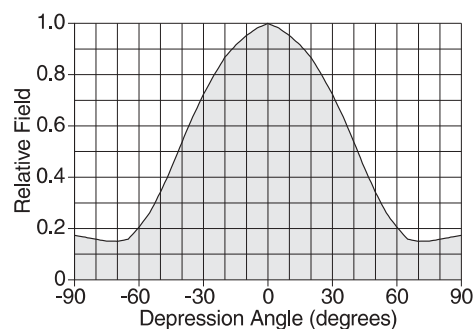
* Mechanical design is based on environmental conditions as stipulated in EIA-222-F (June 1996) and/or ETS 300 019-1-4 which include the static mechanical load imposed on an antenna by wind at maximum velocity. See the Engineering Section of the catalog for further details.

Order Information:

Contact Scala Customer Service for detailed order information.



Azimuth pattern (E-plane)



Elevation pattern (H-plane)



10748-B

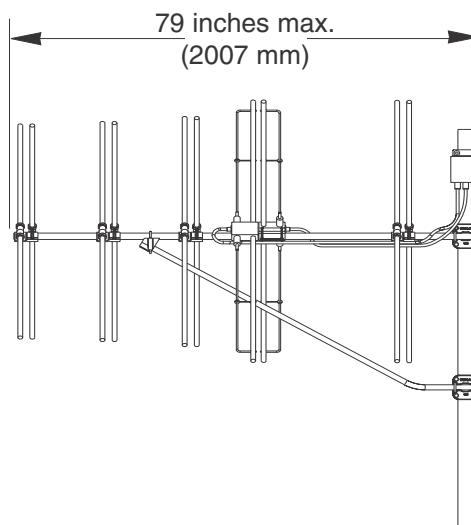
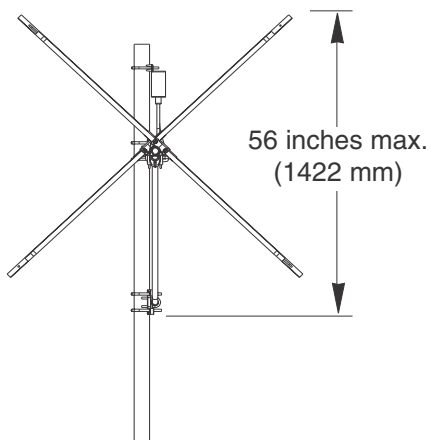
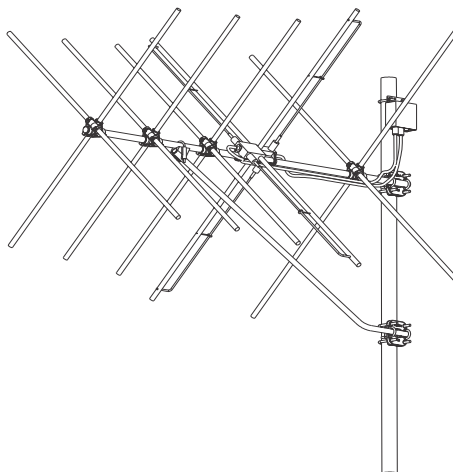
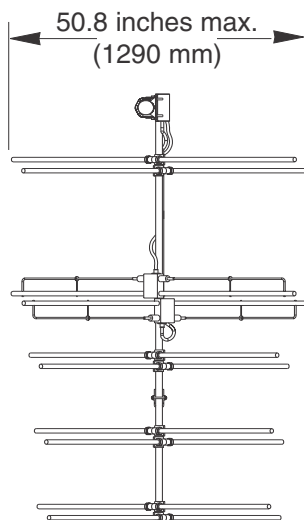
CA5-FM/CP/RM

FM YAGI ANTENNA

6 dBd gain

88 to 108 MHz

Circularly polarized



Order Information:

Contact Scala Customer Service for detailed order information.

All specifications are subject to change without notice