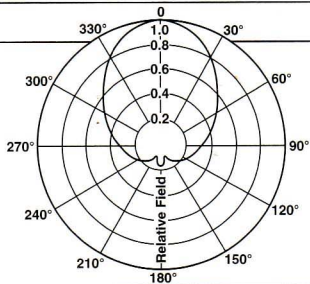


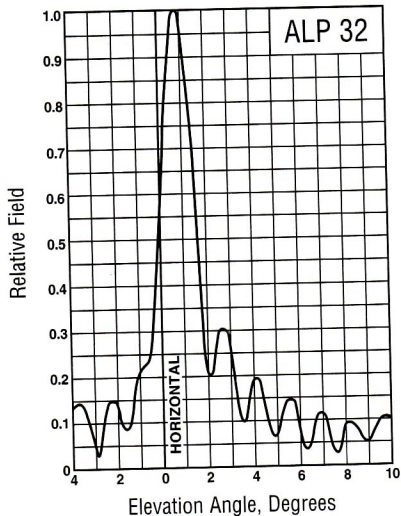
Reduced Rear (H-pol only)

ALP32<sup>†</sup>3-HSNR- (\*)

121.33 (20.84)



Directivity 3.80 (5.80 dB)  
Pattern: NR



## 32 Bay

Directivity 31.93

(15.04 dBd)

Beam Tilt  $0.75^\circ$

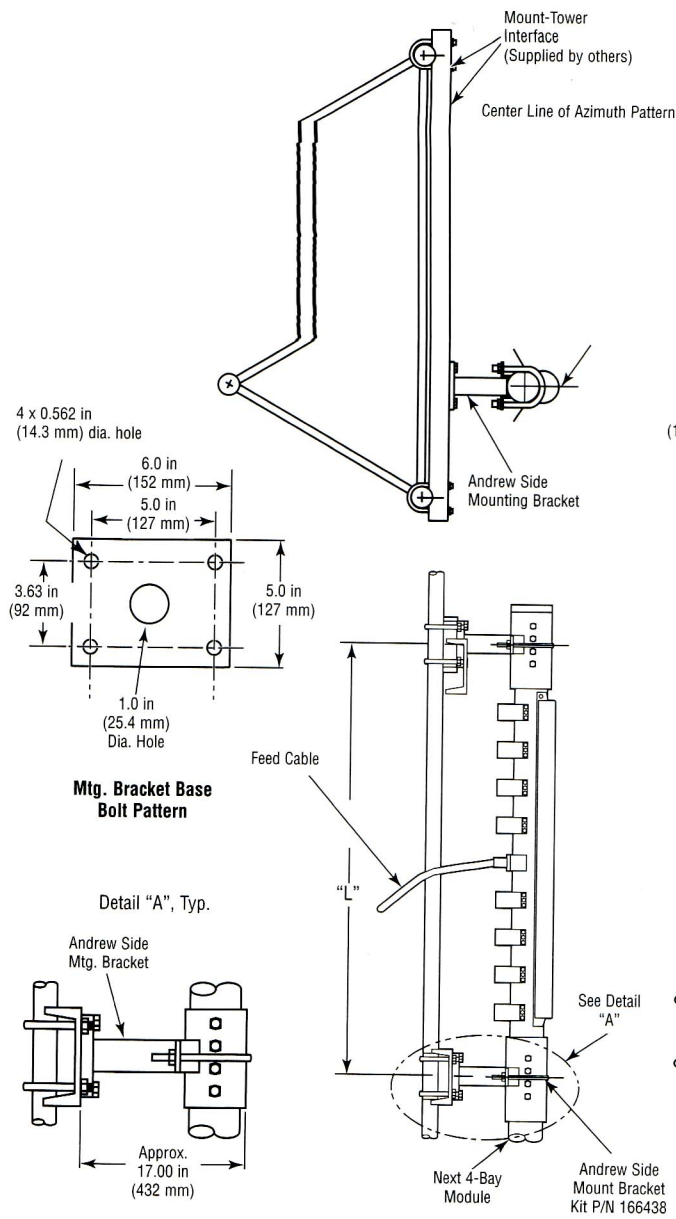


# ALP Series II Antennas Mechanical Drawings

Systems

Broadcast Antenna

## H-Pol Side Mounting Details



## C-Pol Side Mounting Details

