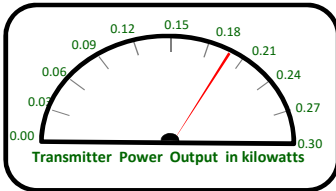
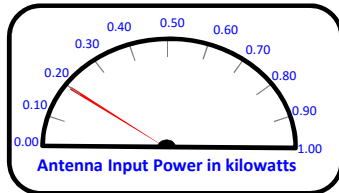


TPO Calculation Summary

Main Antenna Operation

Call letters: W288CQ
City of License: Asheville, NC
Frequency: CH288D (105.5 MHz)
File No: BMPFT-20150318AAU
Facility ID: 155786
Applicant: Saga Communications of North Carolina, LLC



Operating Effective Radiated Power (ERP): 0.250 kW

Antenna Make: Nicom USA Inc.

Antenna Model: BKY3-1DA(Slant45)

No of Elements: One (1)

Antenna COR AGL: 24 meters AGL

Antenna COR AMSL: 1029 meters AMSL

Max Input Power: 1.0 kW

Power Gain: 1.4083 (4.487 dB - 3 dB)

Log[power gain]*10 = Antenna Gain: 1.487 dB

Calculated Antenna Input Power: 0.178 kW

Transmitter Make/Model: TBD

Transmitter Rated Power: 0.300 kW

System Loss Info:

Description	Component Make/Model	Length	Loss
7/8 Inch End Connector	Generic (2@0.02 dB each)		-0.040 dB
Main Antenna Feedline (Tower)	Andrew 7/8" LDF5-50A (Foam)	(0.358 dB/100 ft) 149 ft	-0.533 dB
7/8 Inch End Connector	Generic (2@0.02 dB each)		-0.040 dB

TOTAL SYSTEM GAIN/LOSS: 0.874 dB

1 / [[10^(dB/10)/ERP]] = CALCULATED TRANSMITTER POWER OUTPUT: 0.204 kW