

EXHIBIT 11.1

DESCRIPTION OF PROPOSED ANTENNA SYSTEM

DAYTIME/NIGHTTIME ANTENNA SYSTEM

1. The common daytime/nighttime antenna system consists of one (1) non-directional vertical guyed uniform cross-section steel tower mounted on a base pier and insulator. The tower stands 59.7 meters AGL above a 1.0 meter base pier and insulator for an overall tower height of 60.7 meters AGL. No aviation lighting is believed required. Given the site elevation of 403.9 meters, the tower stands for an overall height of 464.6 meters AMSL. The tower will bear Antenna Structure Registration number 1266012.
2. The proposed ground system will consist of 120 buried copper radials, extending 53.5 meters (175.6 feet) in length, or 90.0° in electrical length, about the base of the tower. Interspersed between each radial will be a stub copper radial extending 13.4 meters (43.9 feet) in length or 22.5° in electrical length about the base of the tower. The material used for the radials will be #10 AWG, soft drawn copper wire or equivalent.
3. The theoretical efficiency for the proposed daytime/nighttime operation will be 312.749 mV/m/kW at 1 km. Given the common daytime and nighttime operating power of 1.0 kW, the theoretical radiation will remain 312.749 mV/m at 1 km.

Exhibit 11.2

Vertical Plan of Antenna System

The site is located 0.5 km southwest of the “+” intersection of Joseph Street and Ehrman Way.
the city Medford, Jackson County, Oregon.

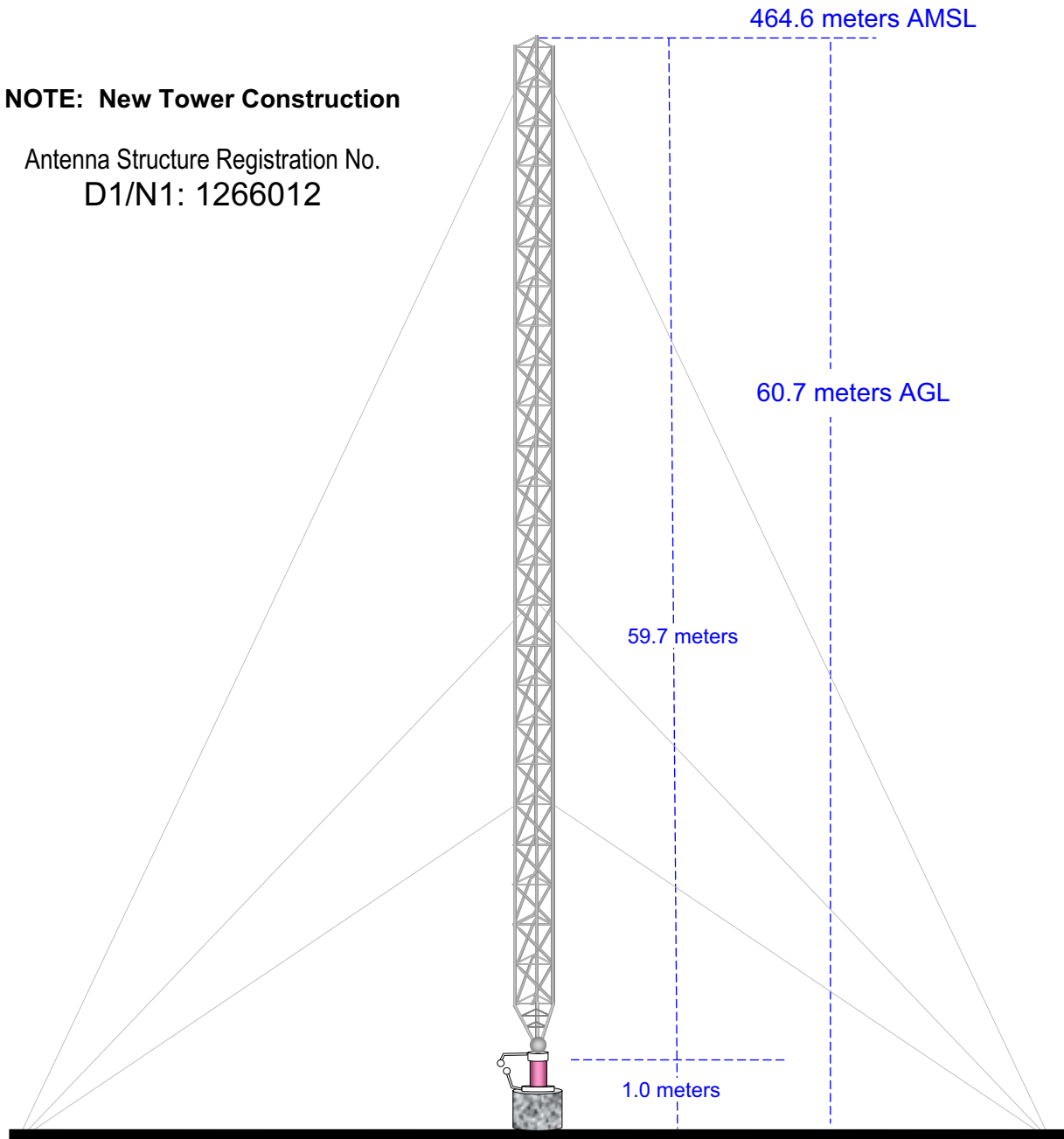
Site Location (NAD 27)

NL: 42° 21' 00"

WL: 122° 54' 27"

NOTE: New Tower Construction

Antenna Structure Registration No.
D1/N1: 1266012

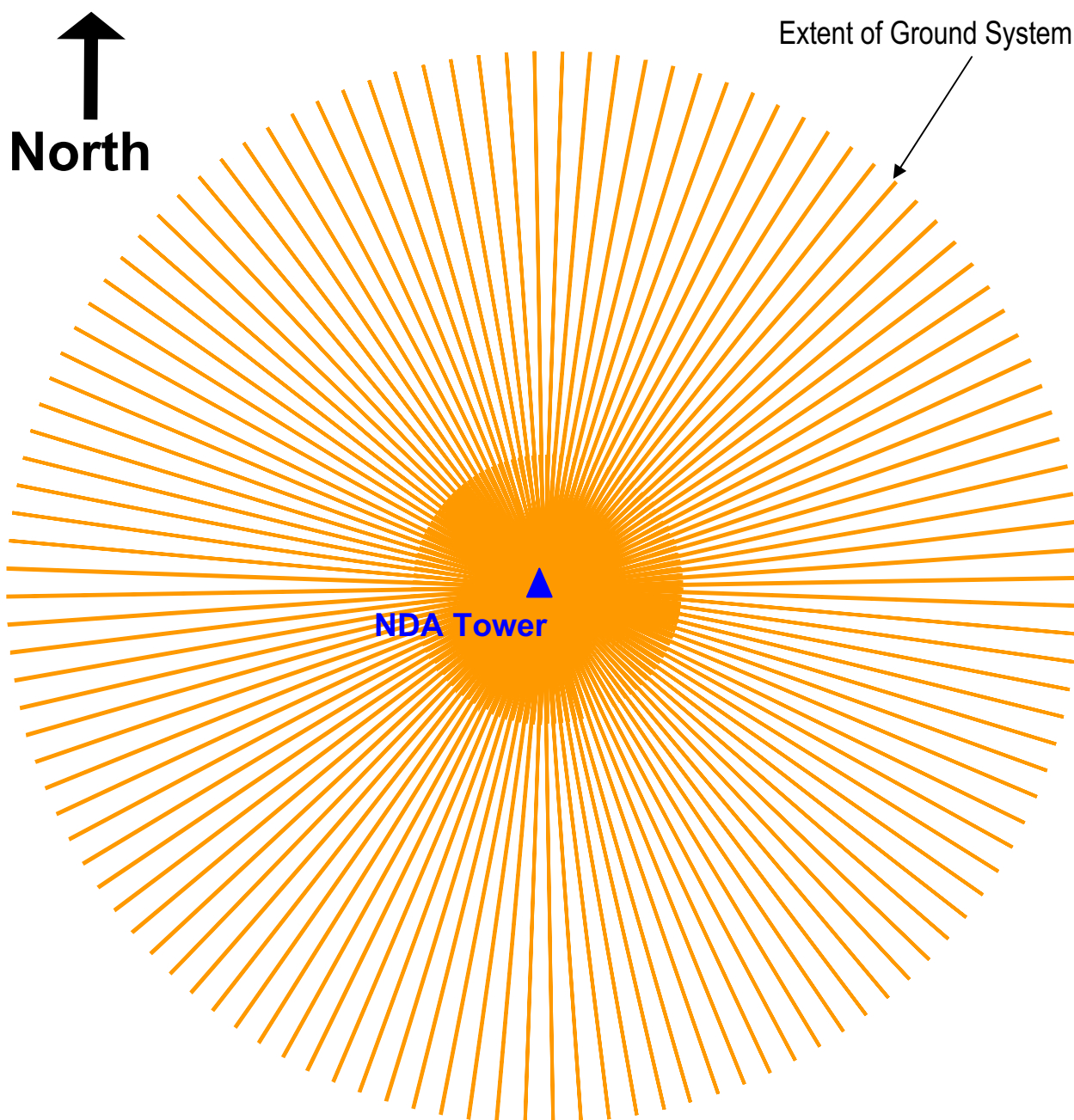


Ground Elevation = 403.9 m AMSL
Drawing is not to Scale

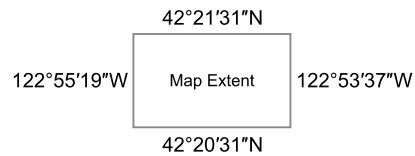
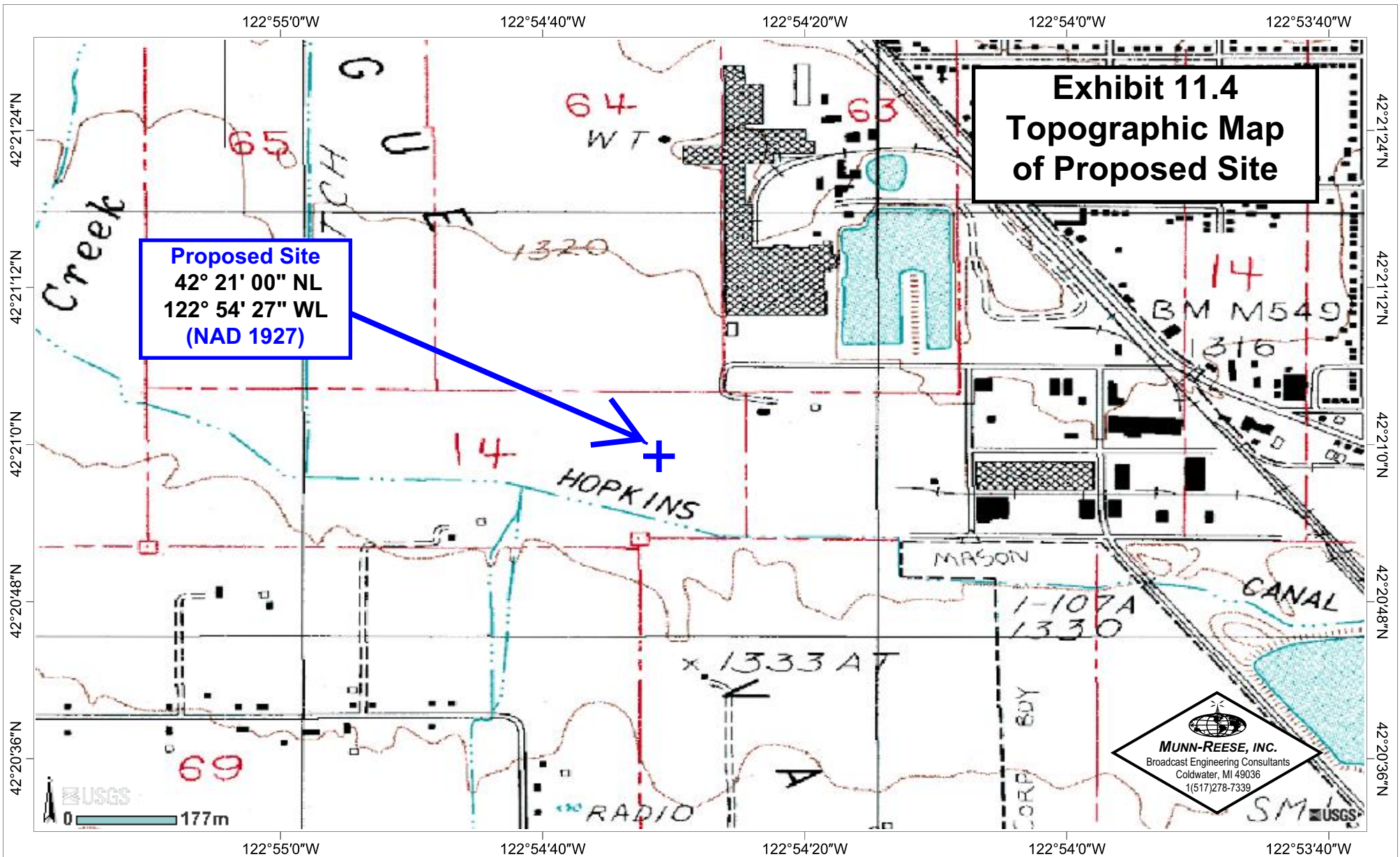
MUNN-REESE, INC.
Broadcast Engineering Consultants
Coldwater, MI 49036

Exhibit 11.3

Horizontal Plat of Antenna Array



The proposed ground system will consist of 120 buried copper radials, extending 53.5 meters (175.6 feet) in length, or 90.0° in electrical length, about the base of the tower. Interspersed between each radial will be a stub copper radial extending 13.4 meters (43.9 feet) in length or 22.5° in electrical length about the base of the tower. The material used for the radials is #10 AWG, soft drawn copper wire or equivalent.



Geographic Coordinate System (WGS84)



NEW.A
Proposed Operation
Freq: 1400 kHz
Class: C
Latitude: 42-21-00 N
Longitude: 122-54-27 W
Power: 1 kW
RMS: 312.749 mV/m @1km
Towers: 1
AUs: 0

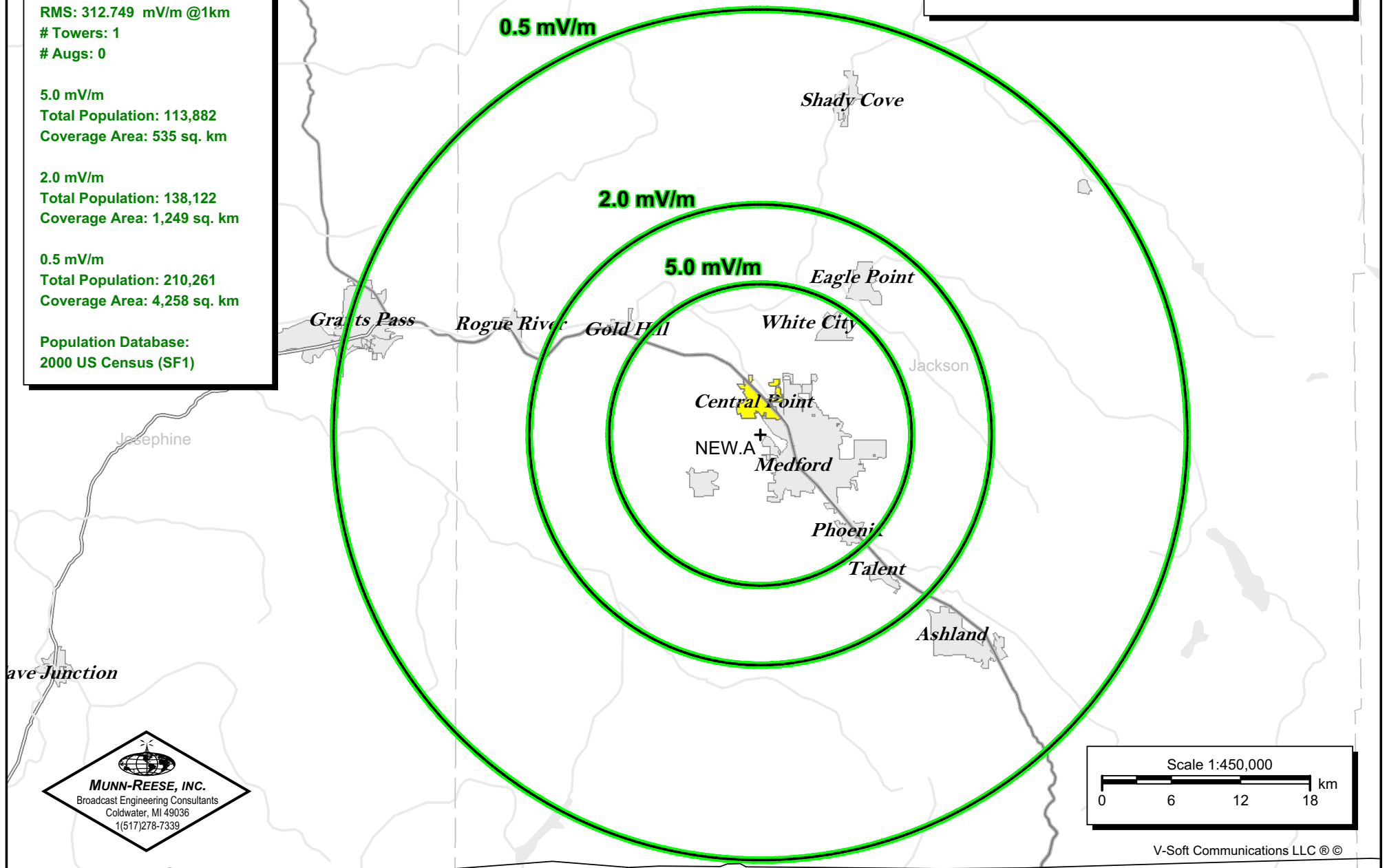
5.0 mV/m
Total Population: 113,882
Coverage Area: 535 sq. km

2.0 mV/m
Total Population: 138,122
Coverage Area: 1,249 sq. km

0.5 mV/m
Total Population: 210,261
Coverage Area: 4,258 sq. km

Population Database:
2000 US Census (SF1)

Exhibit 11.6 Proposed Daytime Service Contour Study



NEW.A
Proposed Operation
Freq: 1400 kHz
Class: C
Latitude: 42-21-00 N
Longitude: 122-54-27 W
Power: 1 kW
RMS: 312.749 mV/m @1km
Towers: 1
Aucs: 0

22.40 mV/m N.I.F. Contour
(Nighttime Interference Free)

Total Population: 68,803
Coverage Area: 108 sq. km

Population Database:
2000 US Census (SF1)

Exhibit 11.7 Proposed Nighttime Service Contour Study



NEW.A
Proposed Operation
Freq: 1400 kHz
Class: C
Latitude: 42-21-00 N
Longitude: 122-54-27 W
Power: 1 kW
RMS: 312.749 mV/m @1km
Towers: 1
Aucs: 0

1.0 V/m "Blanket" Contour
Total Population: None

Population Database:
2000 US Census (SF1)

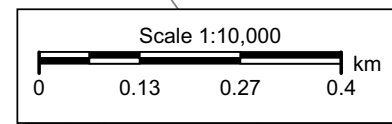
Exhibit 11.8 Proposed Day/Night 1.0 V/m "Blanket" Contour Study

1.0 V/m "Blanket" Contour

+ NEW.A



"+" Represents U.S. Census 2000 Population Centroid Datum (SF1)



V-Soft Communications LLC ©