

Calvary Chapel of Twin Falls, Inc.

W203BG Conway, SC minor channel change 256

Calvary Chapel Of Twin Falls, Inc.

REFERENCE
33 52 23.0 N.
78 57 07.0 W.

CH# 256D - 99.1 MHz, Pwr= 0.07 kW DA, HAAT= 30.2 M, COR= 40 M
Average Protected F(50-50)= 5.16 km
Standard Directional

DISPLAY DATES
DATA 06-19-11
SEARCH 06-23-11

CH CITY	CALL	TYPE STATE	ANT	AZI <--	DIST FILE #	LAT LNG	PWR(kW) HAAT(M)	INT(km) COR(M)	PRO(km) LICENSEE	*IN* (Overlap in km)	*OUT*
256C1 Whiterville	WZFX	LIC_CN NC		8.8 188.9	96.7 BLH19860909KB	34 44 05.0 78 47 25.0	100.000 299	171.5 333	72.0 Wdas License Limited Partn	-76.4*	21.9
258C3 Socastee	WRNN-FM	LIC_C_ SC		162.9 343.0	17.6 BLH20040318AAT	33 43 16.0 78 53 45.0	21.500 108	3.9 112	38.3 Nm Licensing Lic	12.1	-20.7*
253C3 Pawleys Island	WDAI	LIC_NC_ SC		195.9 15.9	32.6 BLH20030207ACI	33 35 27.0 79 02 55.0	6.100 203	3.6 204	38.7 Cumulus Licensing Lic	25.7	-6.4*
255D Myrtle Beach	W255BZ	LIC_C_ SC		145.6 325.6	11.9 BLFT20110222ADJ	33 47 04.0 78 52 44.0	0.013	5.0 42	3.5 Friends Of Public Radio, I	5.3	6.8
255C2 McClintockville	WWIK	LIC_CN SC		216.6 36.2	94.6 BLH19941005KA	33 11 15.0 79 33 31.0	50.000 150	78.1 157	52.2 98.9, Inc.	12.1	36.1
257C3 Kingstree	WWKT-FM	LIC_CX SC		272.2 91.6	96.8 BLH20041216ADI	33 54 07.0 79 59 52.0	11.000 150	58.1 180	39.0 Miller Communications, Inc	33.6	50.7
255D Darlington	W255BD	LIC_C_ SC		298.0 117.5	89.6 BLFT20100415AAA	34 14 51.0 79 48 41.0	0.250 123	21.7 159	14.4 Miller Communications, Inc	63.7	69.3

Terrain database is USGS 03 SEC , R= 73.215 qualifying spacings or FCC minimum Spacings in KM, M= Margin in KM
Contour distances are on direct line to and from reference station. Reference zone= , Co to 3rd adjacent.
Ant Column: (D= DA Standard, Z= DA 73.215, N= Not DA 73.215, _= Omni), Polarization (C,H,V,E), Beamtilt(Y,N,X)
""affixed to 'IN' or 'OUT' values = site inside protected contour.

EXHIBIT 13

Waiver Request of Section 74.1204
Conway SC Minor Channel I.F. Change
Channel 256 70 Watts ERP
Calvary Chapel of Twin Falls, Inc.
June 2011

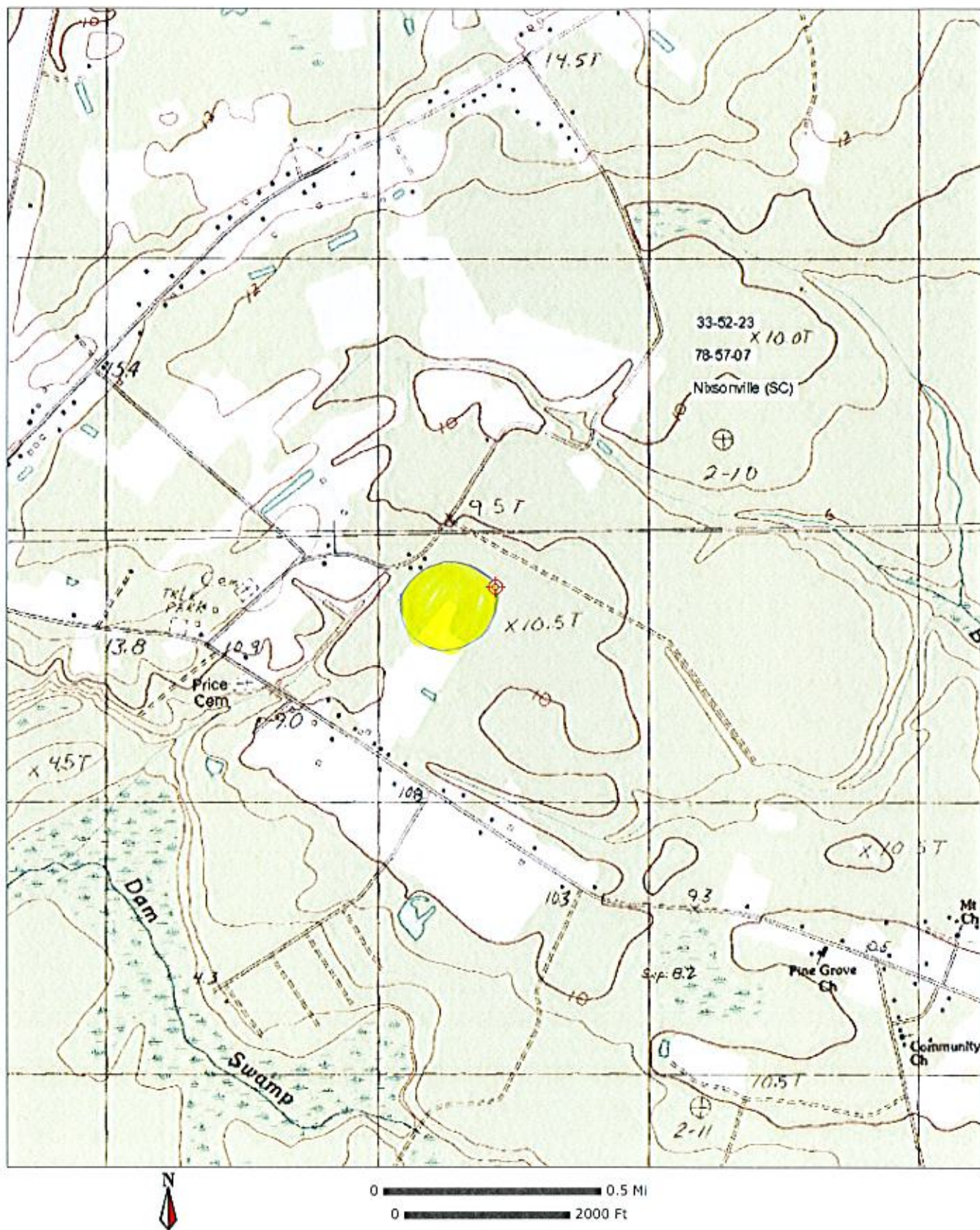
The proposed site is contained entirely inside the service contour third-adjacent WDAI Pawleys Island and second-adjacent WRNN-FM Socastee, SC

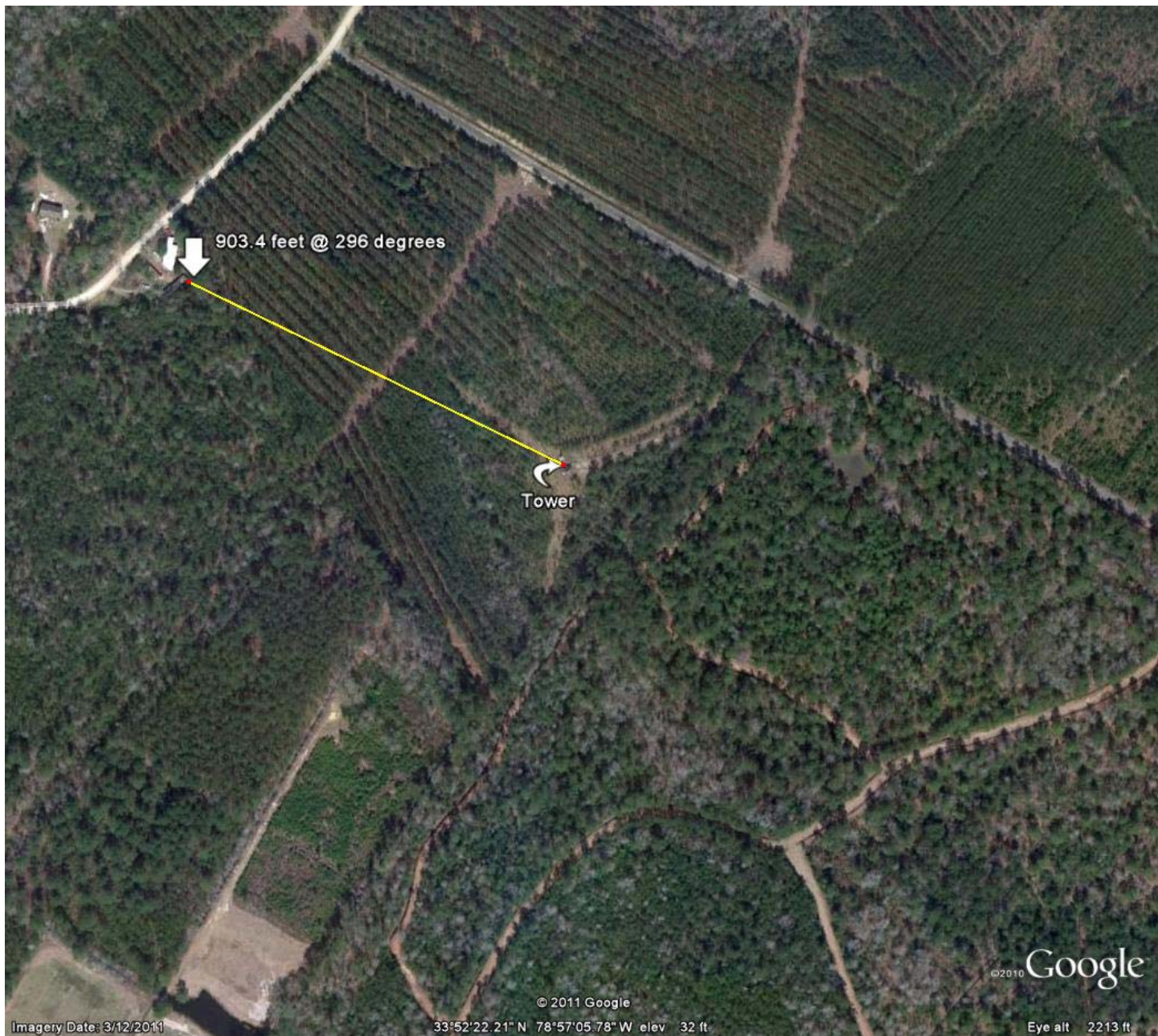
WDAI

The proposed site is contained entirely inside the service contour of third-adjacent station WDAI, 253C3, 6.1kW, Pawleys, SC. The level of least arriving protected F(50,50) signal at the proposed transmitter site is 63.3-dBu. Using the U/D method for calculating proposed interference, the interfering contour is 103.3-dBu (free-space contour method employed). The interfering signal would, in the worst case at the maximum radial, extend 408 meters, or 1340 feet, from the base of the tower, oriented towards the maximum radial of the directional antenna. This tower is located in a sparsely populated area. Attached is the USGS Nixsonville (SC) Quadrangle, with a 103.3 dBu interference contour marked in yellow. Also attached is a Google Earth photo and the calculated nearest point of 903.4 feet from the base of the tower to the closest corner of the nearest residence. Because the interference contour does not affect residences, businesses or major roads, Calvary Chapel of Twin Falls, Inc. respectfully requests a waiver of the FM translator contour overlap regulations with respect to third-adjacent channel station WDAI Pawleys Island, SC.

WRNN-FM

The proposed site is contained entirely inside the service contour of second-adjacent station WRNN-FM, 258C1, 21.5kW, Socastee, SC. The level of least arriving protected F(50,50) signal at the proposed transmitter site is 74.4-dBu. Using the U/D method for calculating proposed interference, the interfering contour is 114.4-dBu (free-space contour method employed). The interfering signal would, in the worst case at the maximum radial, extend 114 meters, or 374 feet, from the base of the tower. This tower is located in a sparsely populated area. Attached is the USGS Nixsonville (SC) Quadrangle, with 103.3 dBu interference contour marked in yellow, which is larger than needed for WRNN-FM. Also attached is a Google Earth photo and the calculated nearest point of 903.4 feet from the base of the tower to the closest corner of the nearest residence. Because the interference contour does not affect residences, businesses or major roads, Calvary Chapel of Twin Falls, Inc. respectfully requests a waiver of the FM translator contour overlap regulations with respect to second-adjacent channel station WRNN-FM Socastee, SC.





Imagery Date: 3/12/2011

© 2011 Google

33°52'22.21" N 78°57'05.78" W elev 32 ft

©2010 Google

Eye alt 2213 ft