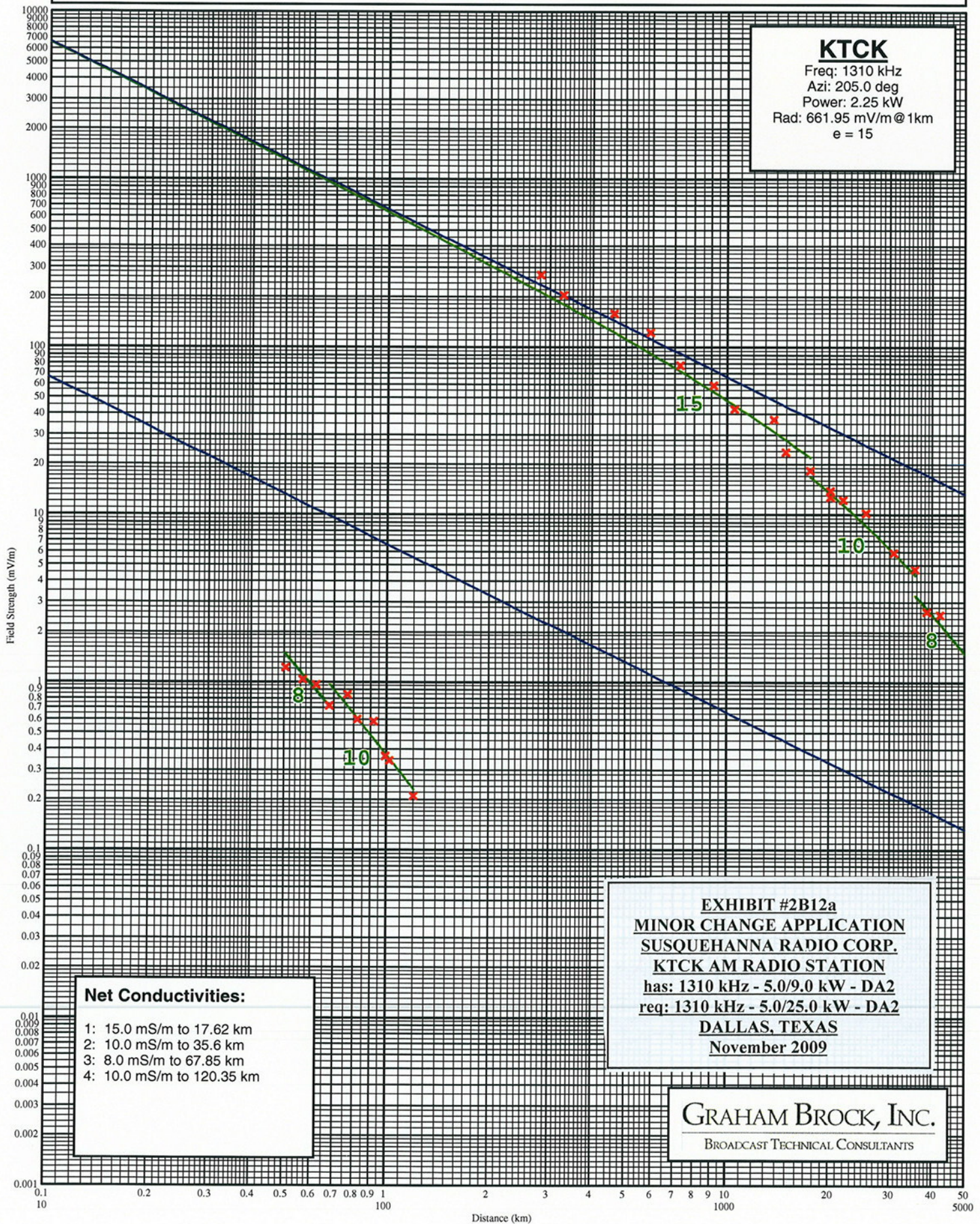


KTCK AM Measured Field Strength

Shown With Matching Conductivity Curves



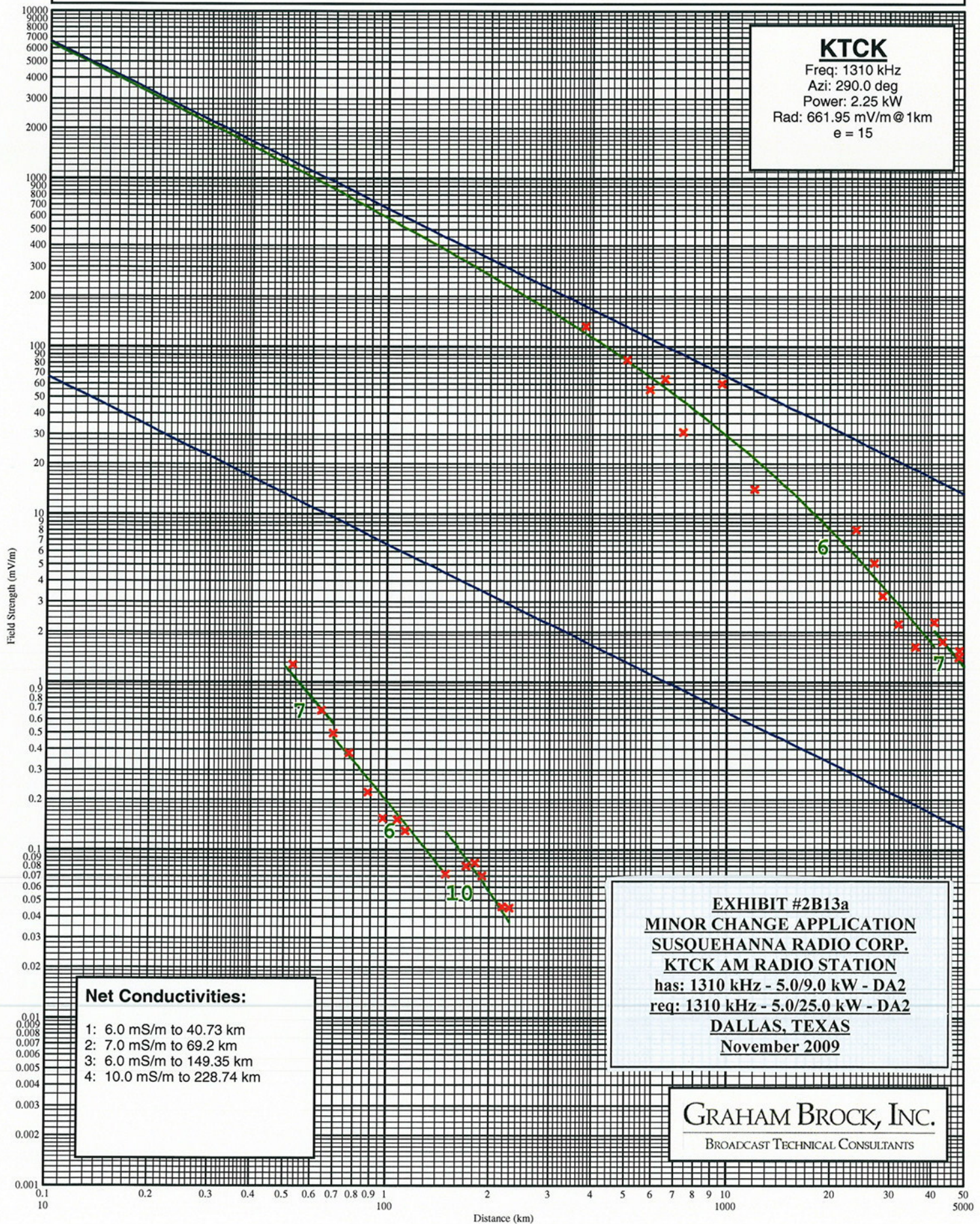
Measurements for 205.0 degrees.

Point Number	Distance		Field	Notes	Date	Time
-----	(km)	(mi)	(mV/m)	-----	-----	-----
1	2.82	1.75	267.000		8/14/2009	1355
2	3.28	2.04	203.000		8/14/2009	1352
3	4.62	2.87	158.000		8/14/2009	1345
4	5.91	3.67	122.000		8/14/2009	1339
5	7.26	4.51	77.800		8/14/2009	1330
6	9.11	5.66	59.000		8/14/2009	1320
7	10.53	6.54	42.500		8/14/2009	1314
8	13.74	8.54	36.900		8/14/2009	1300
9	14.90	9.26	23.500		8/14/2009	1250
10	17.62	10.95	18.300		8/14/2009	1233
11	20.10	12.49	13.800		8/14/2009	1226
12	20.10	12.49	12.700		7/22/2009	1507
13	21.92	13.62	12.200		7/22/2009	1458
14	25.49	15.84	10.200		7/22/2009	1445
15	30.85	19.17	5.900		7/22/2009	1431
16	35.60	22.12	4.700		7/22/2009	1419
17	38.50	23.92	2.640		7/22/2009	1411
18	42.15	26.19	2.520		7/22/2009	1403
19	50.32	31.27	1.220		7/22/2009	1348
20	56.70	35.23	1.030		7/22/2009	1335
21	62.04	38.55	0.960		7/22/2009	1325
22	67.85	42.16	0.720		7/22/2009	1248
23	76.49	47.53	0.840		7/22/2009	1230
24	81.85	50.86	0.600		7/22/2009	1215
25	91.51	56.86	0.580		7/22/2009	1157
26	99.07	61.56	0.360		7/22/2009	1129
27	101.87	63.30	0.340		7/22/2009	1135
28	120.35	74.78	0.210		7/22/2009	1100

EXHIBIT #2B12b
MINOR CHANGE APPLICATION
SUSQUEHANNA RADIO CORP.
KTCK AM RADIO STATION
has: 1310 kHz - 5.0/9.0 kW - DA2
req: 1310 kHz - 5.0/25.0 kW - DA2
DALLAS, TEXAS
November 2009

KTCK AM Measured Field Strength

Shown With Matching Conductivity Curves

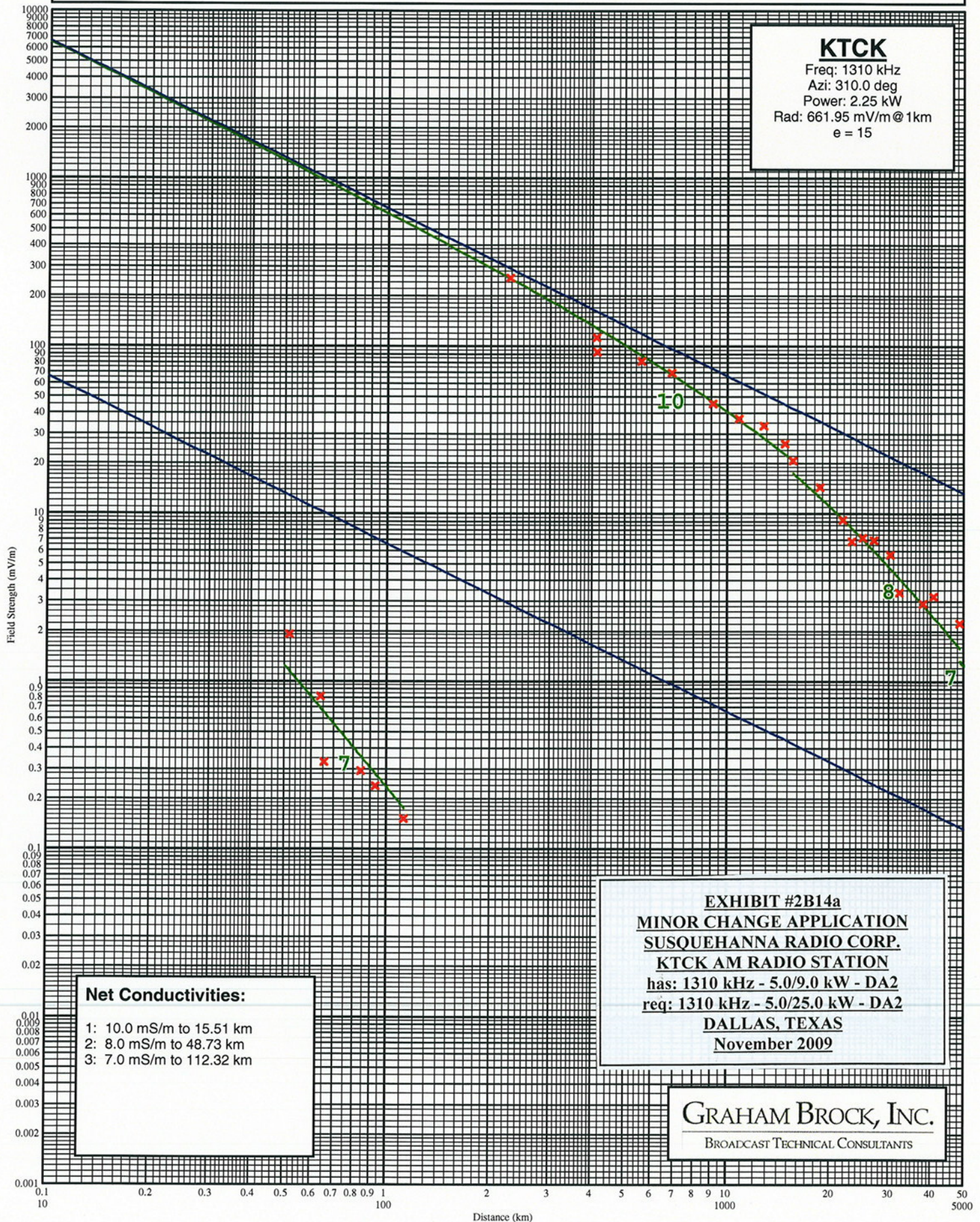


Measurements for 290.0 degrees.

Point Number -----	Distance (km) (mi) -----	Field (mV/m) -----	Notes -----	Date -----	Time -----
1	3.80 2.36	132.000		8/14/2009	0943
2	5.04 3.13	83.500		8/14/2009	0947
3	5.91 3.67	55.000		8/14/2009	0952
4	6.55 4.07	64.000		8/14/2009	0956
5	7.40 4.60	30.800		8/14/2009	1003
6	9.66 6.00	60.000		8/14/2009	1012
7	12.05 7.49	14.100		8/14/2009	1027
8	23.74 14.75	8.100		8/14/2009	1111
9	26.92 16.73	5.100		8/14/2009	1124
10	28.55 17.74	3.250		8/14/2009	1144
11	31.80 19.76	2.220		8/14/2009	1200
12	35.79 22.24	1.620		8/14/2009	1237
13	40.73 25.31	2.280		8/14/2009	1252
14	43.07 26.76	1.740		8/14/2009	1303
15	48.23 29.97	1.400		8/14/2009	1314
16	48.38 30.06	1.530		7/24/2009	1627
17	52.71 32.75	1.270		7/24/2009	1611
18	63.84 39.67	0.681		7/24/2009	1549
19	69.20 43.00	0.495		7/24/2009	1533
20	77.25 48.00	0.377		7/24/2009	1515
21	87.84 54.58	0.220		7/24/2009	1455
22	97.61 60.65	0.154		7/24/2009	1425
23	107.47 66.78	0.152		7/24/2009	1352
24	113.17 70.32	0.130		7/24/2009	1330
25	149.35 92.80	0.072		7/24/2009	1201
26	171.43 106.52	0.080		7/24/2009	1122
27	181.16 112.57	0.084		7/24/2009	1100
28	190.48 118.36	0.070		7/24/2009	1033
29	217.86 135.37	0.046		7/24/2009	1004
30	228.74 142.13	0.045		7/24/2009	0945

KTCK AM Measured Field Strength

Shown With Matching Conductivity Curves

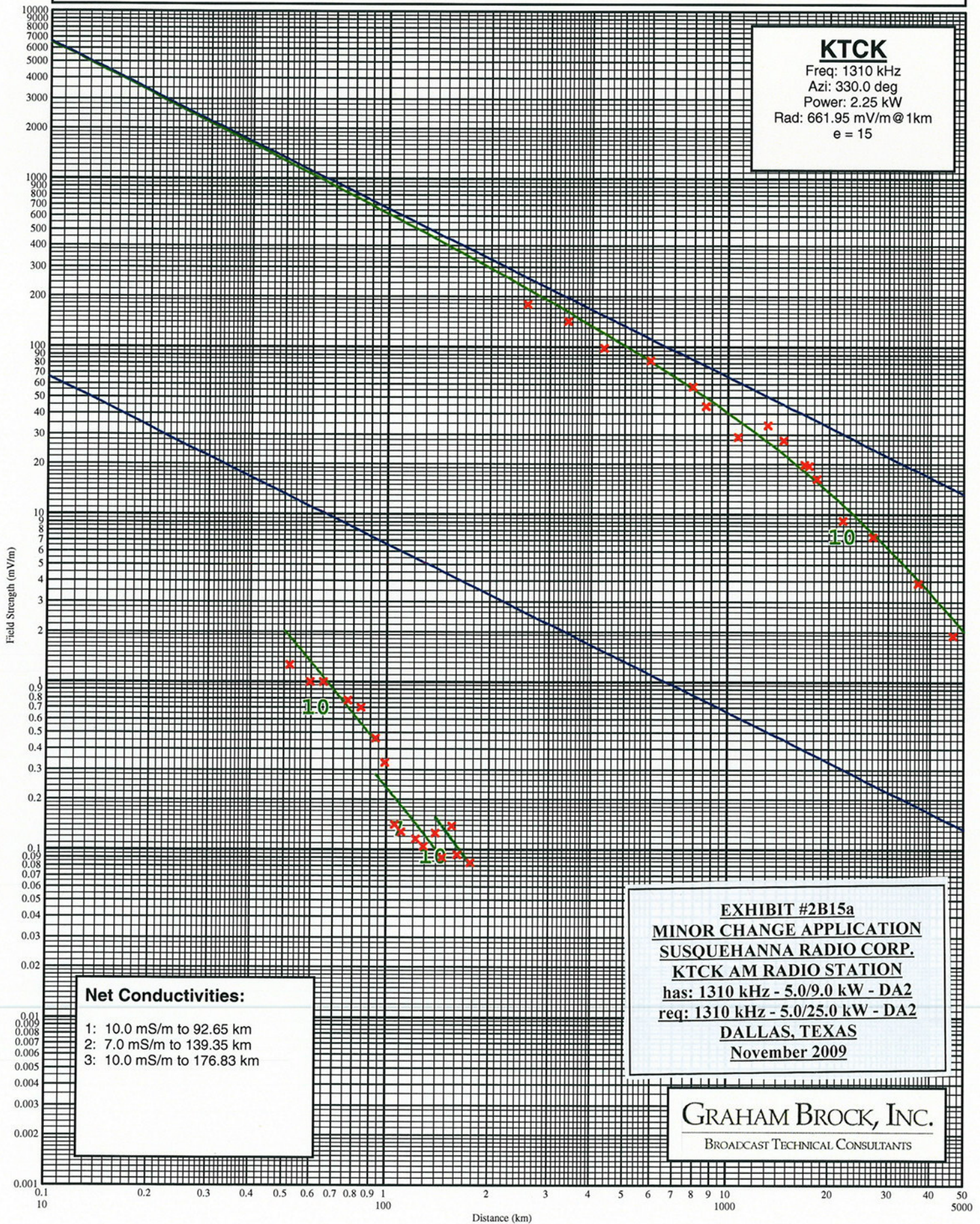


Measurements for 310.0 degrees.

Point Number	Distance (km) (mi)		Field (mV/m)	Notes	Date	Time
-----	-----	-----	-----	-----	-----	-----
1	2.29	1.42	255.000		8/13/2009	1527
2	4.10	2.55	112.000		8/13/2009	1520
3	4.12	2.56	92.000		8/13/2009	1515
4	5.60	3.48	81.000		8/13/2009	1512
5	6.87	4.27	69.000		8/13/2009	1503
6	9.08	5.64	45.500		8/13/2009	1451
7	10.80	6.71	37.000		8/13/2009	1441
8	12.73	7.91	33.500		8/13/2009	1433
9	14.73	9.15	26.100		8/13/2009	1425
10	15.51	9.64	20.700		8/13/2009	1421
11	18.64	11.58	14.400		8/13/2009	1410
12	21.87	13.59	9.150		7/28/2009	1607
13	23.19	14.41	6.800		8/13/2009	1355
14	25.11	15.60	7.200		8/13/2009	1344
15	27.09	16.83	6.950		7/28/2009	1557
16	30.24	18.79	5.700		7/28/2009	1550
17	32.25	20.04	3.390		7/28/2009	1544
18	37.80	23.49	2.900		7/28/2009	1531
19	40.70	25.29	3.200		7/28/2009	1518
20	48.73	30.28	2.220		7/28/2009	1504
21	51.55	32.03	1.910		7/28/2009	1456
22	63.57	39.50	0.810		7/28/2009	1428
23	65.32	40.59	0.331		7/28/2009	1403
24	84.10	52.26	0.291		7/28/2009	1327
25	92.62	57.55	0.237		7/28/2009	1306
26	112.32	69.79	0.151		7/28/2009	1228

KTCK AM Measured Field Strength

Shown With Matching Conductivity Curves



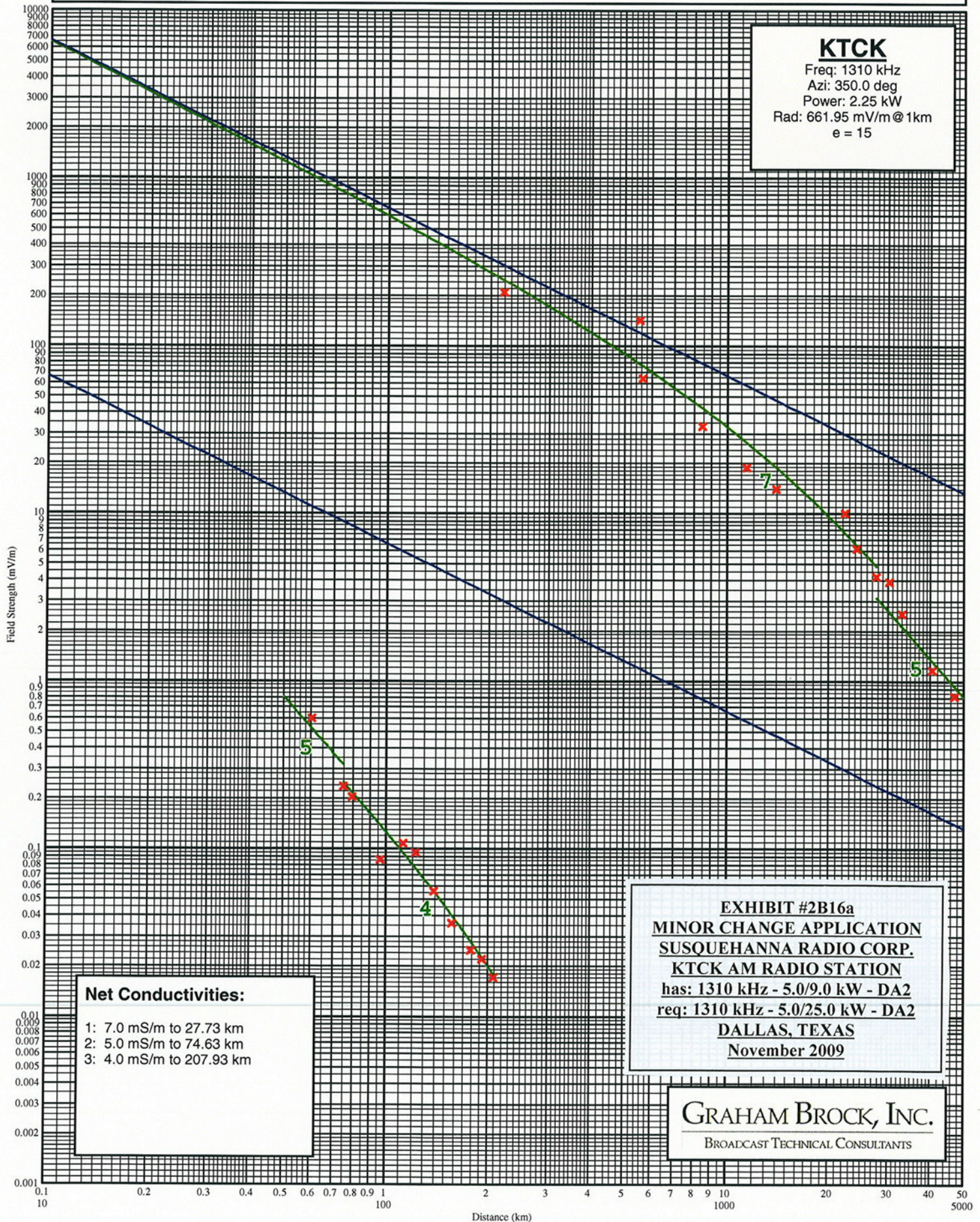
Measurements for 330.0 degrees.

Point Number -----	Distance (km) (mi) -----	Field (mV/m) -----	Notes -----	Date -----	Time -----
1	2.56 1.59	179.000		8/13/2009	1533
2	3.38 2.10	142.000		8/13/2009	1538
3	4.33 2.69	98.000		8/13/2009	1543
4	5.94 3.69	83.000		8/13/2009	1548
5	7.90 4.91	57.800		8/13/2009	1554
6	8.64 5.37	44.000		8/13/2009	1605
7	10.69 6.64	28.900		8/13/2009	1615
8	13.12 8.15	34.000		8/13/2009	1623
9	14.60 9.07	27.700		8/13/2009	1629
10	16.85 10.47	19.800		8/13/2009	1640
11	17.38 10.80	19.500		7/29/2009	1600
12	18.33 11.39	16.300		7/29/2009	1553
13	21.95 13.64	9.200		7/29/2009	1539
14	26.94 16.74	7.310		7/29/2009	1528
15	36.71 22.81	3.880		7/29/2009	1510
16	46.64 28.98	1.890		7/29/2009	1451
17	51.76 32.16	1.260		7/29/2009	1441
18	59.45 36.94	0.995		7/29/2009	1429
19	65.08 40.44	0.993		7/29/2009	1419
20	76.69 47.65	0.775		7/29/2009	1404
21	83.98 52.18	0.700		7/29/2009	1351
22	92.65 57.57	0.460		7/29/2009	1319
23	98.64 61.29	0.332		7/29/2009	1309
24	105.80 65.74	0.141		7/29/2009	1255
25	110.38 68.59	0.128		7/29/2009	1248
26	121.68 75.61	0.116		7/29/2009	1231
27	128.63 79.93	0.105		7/29/2009	1222
28	139.35 86.59	0.125		7/29/2009	1120
29	145.47 90.39	0.090		7/29/2009	1107
30	156.20 97.06	0.138		7/29/2009	1050
31	161.85 100.57	0.093		7/29/2009	1039
32	176.83 109.88	0.084		7/29/2009	0956

EXHIBIT #2B15b
MINOR CHANGE APPLICATION
SUSQUEHANNA RADIO CORP.
KTCK AM RADIO STATION
has: 1310 kHz - 5.0/9.0 kW - DA2
req: 1310 kHz - 5.0/25.0 kW - DA2
DALLAS, TEXAS
November 2009

KTCK AM Measured Field Strength

Shown With Matching Conductivity Curves



Measurements for 350.0 degrees.

Point Number -----	Distance (km) (mi) -----	Field (mV/m) -----	Notes -----	Date -----	Time -----
1	2.19 1.36	208.000		8/14/2009	0914
2	5.50 3.42	142.000		8/14/2009	0931
3	5.63 3.50	64.000		8/14/2009	0933
4	8.43 5.24	33.200		8/14/2009	0954
5	11.38 7.07	18.800		8/14/2009	1015
6	13.92 8.65	14.000		8/14/2009	1035
7	22.32 13.87	10.000		8/10/2009	1637
8	24.16 15.01	6.200		8/10/2009	1630
9	27.73 17.23	4.200		8/10/2009	1620
10	30.26 18.80	3.900		8/10/2009	1615
11	32.96 20.48	2.510		8/10/2009	1604
12	40.59 25.22	1.160		8/10/2009	1545
13	46.96 29.18	0.810		8/10/2009	1529
14	60.40 37.53	0.600		8/10/2009	1436
15	74.63 46.37	0.235		8/10/2009	1414
16	79.13 49.17	0.203		8/10/2009	1400
17	96.05 59.68	0.086		8/10/2009	1334
18	112.64 69.99	0.108		8/10/2009	1316
19	122.26 75.97	0.095		8/10/2009	1303
20	138.74 86.21	0.056		8/10/2009	1228
21	156.78 97.42	0.036		8/10/2009	1208
22	178.09 110.66	0.025		8/10/2009	1122
23	192.85 119.83	0.022		8/10/2009	1051
24	207.93 129.20	0.017		8/10/2009	1020

Groundwave Field Strength vs. Distance

Inverse Distance Field: 100.0 mV/m@1km

Family of Curves

1250 - 1330 kHz

Computed for 1290 kHz
 $e = 15$

EXHIBIT #2B17

MINOR CHANGE APPLICATION

SUSQUEHANNA RADIO CORP.

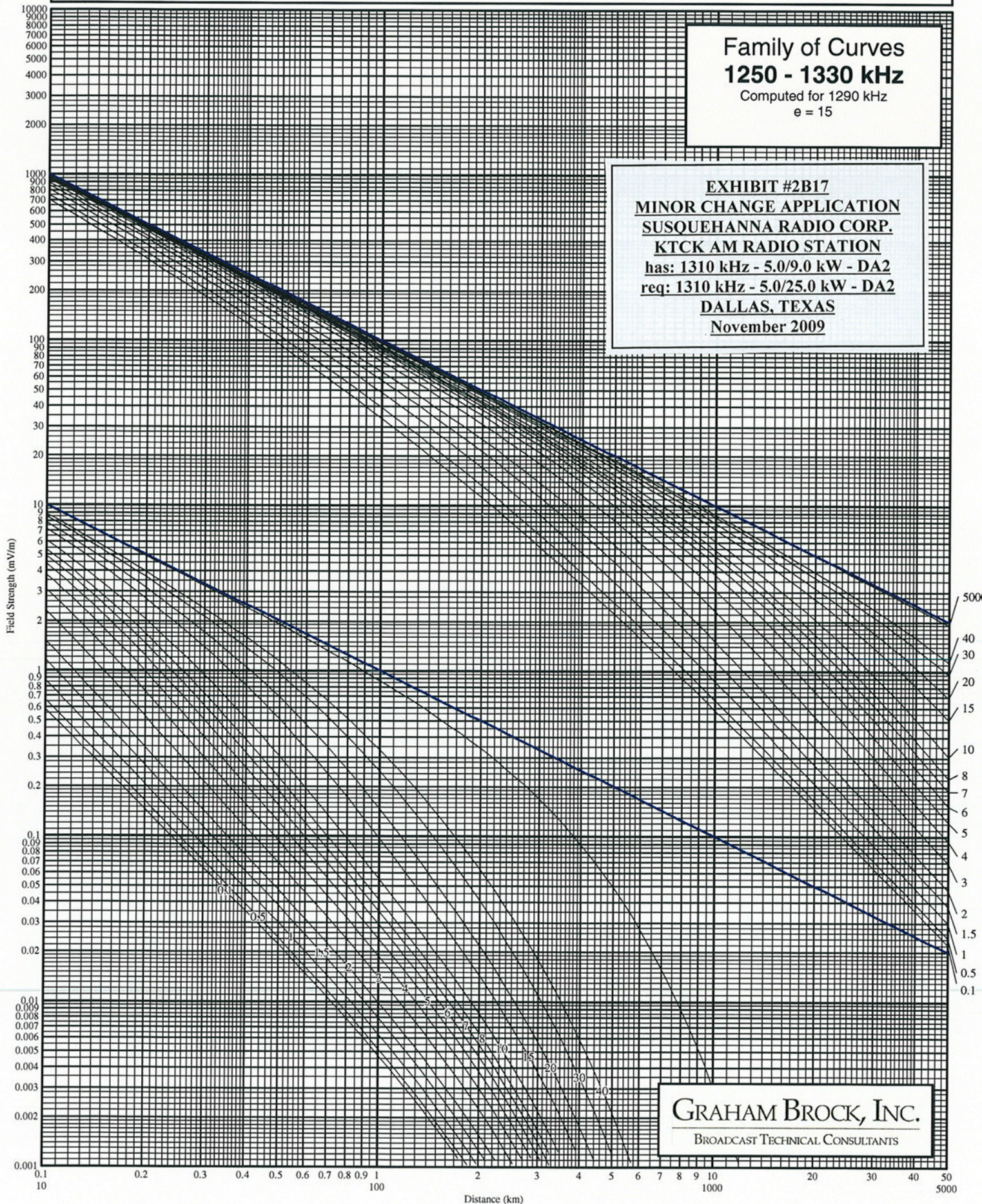
KTCK AM RADIO STATION

has: 1310 kHz - 5.0/9.0 kW - DA2

req: 1310 kHz - 5.0/25.0 kW - DA2

DALLAS, TEXAS

November 2009



GRAHAM BROCK, INC.

BROADCAST TECHNICAL CONSULTANTS