

307(b) EXHIBIT

Global News Consultants, LLC (“Global”), licensee of Station KYTS(FM), hereby submits this application which proposes to allot Channel 289C3 to Manderson, Wyoming as that community’s first local service. As demonstrated in the application, Channel 289C3 can be allotted to Manderson consistent with Section 73.207 of the Commission’s Rules. A 70 dBu signal can be provided to Manderson from the proposed reference coordinates.

Global desires to change KYTS’s community of license from Ten Sleep to Manderson under the guidelines set forth in *Amendment of the Commission’s Rules Regarding Modification of FM and TV Authorizations to Specify a New Community of License*, 4 FCC Rcd 3870 (1989), *recons. granted in part*, 5 FCC Rcd 7094 (1990). There, the Commission stated that a station may change its community of license without subjecting the license to other expressions of interest if (1) the proposed allotment is mutually exclusive with the current allotment; (2) the current community of license will not be deprived of its only local service; and (3) the proposed arrangement of allotments is preferred under the Commission’s allotment priorities. These criteria are met here. First, the proposed use of Channel 289C3 at Manderson is mutually exclusive with the original Channel 286C3 allotment at Ten Sleep. Second, Ten Sleep will not be deprived of potential local service because vacant Channel 267A will remain at Ten Sleep. Finally, the provision of a first local service to Manderson (U.S. 2000 Census pop. 104) under Priority 3, is preferred over (i) the retention of a potential second local service at Ten Sleep (U.S. 2000 Census pop. 304) under Priority 4, and (ii) the creation of gray area

to 25 persons under Priority 2, which as discussed below is *de minimis*.¹ See *Revision of FM Assignment Policies and Procedures*, 90 FCC 2d 88 (1982). The proposed changes will create a *de minimis* gray area of 25 persons in 233 sq. km.²

Manderson is not located in an Urbanized Area, and the proposed 70 dBu signal of the Station will not encompass any Urbanized Area. Therefore, this relocation does not implicate the Commission's policy against migration of stations from rural to urban areas. See *Faye and Richard Tuck*, 3 FCC Rcd 5374 (1988). Manderson enjoys the attributes that the Commission traditionally associates with a community. Manderson is identified in the 2000 U.S. Census and therefore is presumed to have the status of a community for allotment purposes. See *Arnold and Columbia, California*, 7 FCC Rcd 6302 (1992). Manderson is a town that was named after Charles Manderson in 1889. He was chief counsel for the Burlington Railroad. Manderson is home to several local businesses, churches, and schools, including Big Horn Truck & Equipment, Bonanza Valley Ranch, Cowboy Timber, Crowfoot Ranch, Foss Farms & Feedlot, Harmony Ranch Cottage, Hi Way Bar & Café, KCS Field Office, Lloyds Auction Services, Mountain West Telecommunications, Norwood River Hunt Club, Paint Rock Fencing,

¹ Under the FM allotment priorities, the creation of underserved area (Priority 2) and the provision of first local service (Priority 3) are considered coequal with the larger population prevailing. See *Silverton and Bayfield, Colorado*, 14 FCC Rcd 21502 (1999); *Littlefield, Wolfforth and Tahoka, Texas*, 12 FCC Rcd 3215 (1997). A comparison of Manderson's population of 104 outweighs the grey area of 25 persons. See *Littlefield, supra*.

² The Commission has held in numerous cases that the creation of a loss area with a small numbers of people is *de minimis*. See *Eldorado, Mason, Mertzon and Fort Stockton, Texas*, DA 07-61 (2007) (the provision of a first aural service to 124 persons was *de minimis*); *Freer, Hebbroville, and Orange Grove, Texas*, 19 FCC Rcd 4742 (2004) (the provision of a first aural service to 178 persons was *de minimis*); *Wallace, Idaho and Big Fork, Montana*, 19 FCC Rcd 15267 (2004) (the provision of a first aural service to 55 persons and the creation of an underserved area consisting of 150 persons were *de minimis*); *Sparta and Buckhead, Georgia*, 16 FCC Rcd 2169 (2001) (the creation of underserved area consisting of 124 persons was *de minimis*); *Seabrook, Texas, et al.*, 10 FCC Rcd 9360 (1995) (the provision of a second aural service to 455 persons was *de minimis*).

Rairden Motor Company, Whiting Petroleum, and Wind River Seed. Manderson is the site of the Manderson Oil Field, which provide jobs to the community of Manderson. The Manderson Elementary School and Cloud Peak Middle School are both located in Manderson. Among the government offices located in Manderson are the Manderson Town Hall, Big Horn Rural Fire District, and the U.S. Post Office. Manderson has its own zip code (82432). *See* Exhibit 1.

Exhibit 1



Big Horn Rural Fire
District Station

Cloud Peak School

Geographic area	Total population	Race								Hispanic or Latino (of any race)
		One race								
		Total	White	Black or African American	American Indian and Alaska Native	Asian	Native Hawaiian and Other Pacific Islander	Some other race	Two or more races	
Owl Creek CDP, Hot Springs County	11	11	11	0	0	0	0	0	0	0
Parkman CDP, Sheridan County	137	136	130	0	2	0	0	4	1	4
Pavillion town, Fremont County	165	159	155	0	3	0	0	1	6	4
Pine Bluffs town, Laramie County	1,153	1,139	1,106	2	8	2	0	21	14	79
Pinedale town, Sublette County	1,412	1,394	1,369	5	10	2	2	6	18	21
Pine Haven town, Crook County	222	218	214	0	4	0	0	0	4	0
Point of Rocks CDP, Sweetwater County	3	3	3	0	0	0	0	0	0	0
Powder River CDP, Natrona County	51	51	51	0	0	0	0	0	0	0
Powell city, Park County	5,373	5,319	5,128	7	25	21	2	136	54	366
Purple Sage CDP, Sweetwater County	413	353	290	13	3	1	0	46	60	76
Rafter J Ranch CDP, Teton County	1,138	1,125	1,108	4	2	9	0	2	13	21
Ralston CDP, Park County	233	232	223	0	3	0	0	6	1	15
Ranchester town, Sheridan County	701	684	629	0	45	0	1	9	17	30
Ranchettes CDP, Laramie County	4,869	4,823	4,624	43	42	45	1	68	46	233
Rawlins city, Carbon County	8,538	8,312	7,331	69	125	72	8	707	226	1,797
Red Butte CDP, Natrona County	439	431	425	0	1	2	0	3	8	8
Reliance CDP, Sweetwater County	665	647	614	6	3	2	1	21	18	53
Riverside town, Carbon County	59	59	59	0	0	0	0	0	0	0
Riverton city, Fremont County	9,310	9,070	8,082	16	752	44	3	173	240	660
Robertson CDP, Uinta County	59	57	57	0	0	0	0	0	2	0
Rock River town, Albany County	235	235	226	0	8	1	0	0	0	13
Rock Springs city, Sweetwater County	18,708	18,292	17,164	201	160	191	6	570	416	1,676
Rolling Hills town, Converse County	449	441	434	1	2	3	0	1	8	13
Saratoga town, Carbon County	1,726	1,703	1,647	2	14	12	1	27	23	71
Sheridan city, Sheridan County	15,804	15,587	15,161	34	154	73	31	134	217	417
Shoshoni town, Fremont County	635	615	593	1	8	7	0	6	20	25
Sinclair town, Carbon County	423	419	407	2	6	0	0	4	4	11
Slater CDP, Platte County	82	82	82	0	0	0	0	0	0	0
Sleepy Hollow CDP, Campbell County	1,177	1,175	1,123	1	15	12	5	19	2	53
Smoot CDP, Lincoln County	182	177	174	0	1	0	0	2	5	9
South Flat CDP, Washakie County	374	365	312	1	3	0	0	49	9	67
South Greeley CDP, Laramie County	4,201	4,041	3,565	97	63	14	0	302	160	626
South Park CDP, Teton County	864	846	843	0	1	0	1	1	18	6
Star Valley Ranch CDP, Lincoln County	776	767	758	1	6	0	0	2	9	3
Story CDP, Sheridan County	887	885	877	1	3	2	0	2	2	12
Sundance town, Crook County	1,161	1,145	1,122	0	19	2	0	2	16	7
Superior town, Sweetwater County	244	231	203	0	5	0	1	22	13	37
Sweeney Ranch CDP, Sweetwater County	17	17	17	0	0	0	0	0	0	0
Table Rock CDP, Sweetwater County	82	76	71	0	1	1	0	3	6	9
Taylor CDP, Lincoln County	90	87	84	0	1	0	2	0	3	0
Ten Sleep town, Washakie County	304	304	301	0	2	0	0	1	0	2
Teton Village CDP, Teton County	175	175	173	0	0	2	0	0	0	3
Thayne town, Lincoln County	341	335	333	0	1	0	0	1	6	2
The Buttes CDP, Albany County	31	31	31	0	0	0	0	0	0	0
Thermopolis town, Hot Springs County	3,172	3,135	3,042	15	54	8	0	16	37	73
Torrington city, Goshen County	5,776	5,704	5,400	18	52	17	6	211	72	547
Turnerville CDP, Lincoln County	155	150	150	0	0	0	0	0	5	2
Upton town, Weston County	872	849	837	0	6	3	0	3	23	16
Van Tassell town, Niobrara County	18	18	17	0	0	1	0	0	0	0
Veteran CDP, Goshen County	28	28	28	0	0	0	0	0	0	0
Vista West CDP, Natrona County	1,008	984	974	0	4	0	0	6	24	8
Wamsutter town, Sweetwater County	261	255	245	0	2	0	0	8	6	34
Warren AFB CDP, Laramie County	4,440	4,282	3,535	417	22	98	15	195	158	389
Washakie Ten CDP, Washakie County	604	594	553	0	1	9	0	31	10	48
Washam CDP, Sweetwater County	43	43	43	0	0	0	0	0	0	0
West River CDP, Washakie County	321	318	300	1	2	0	0	15	3	27
Westview Circle CDP, Platte County	67	67	67	0	0	0	0	0	0	0
Wheatland town, Platte County	3,548	3,520	3,406	11	24	12	0	67	28	232
Wilson CDP, Teton County	1,294	1,280	1,264	1	2	6	0	7	14	13
Winchester CDP, Washakie County	60	60	59	0	0	0	0	1	0	1
Woods Landing-Jelm CDP, Albany County	100	96	93	0	0	2	0	1	4	1
World city, Washakie County	5,250	5,127	4,697	3	30	44	0	353	123	708
Wright town, Campbell County	1,347	1,333	1,315	0	6	1	0	11	14	31
Yoder town, Goshen County	169	167	158	0	1	0	4	4	2	6
Y-O Ranch CDP, Platte County	242	242	234	0	0	0	0	8	0	14

Source: U.S. Census Bureau, Census 2000 Redistricting Data (Public Law 94-171) Summary File, Matrices PL1 and PL2.

Manderson Town Office

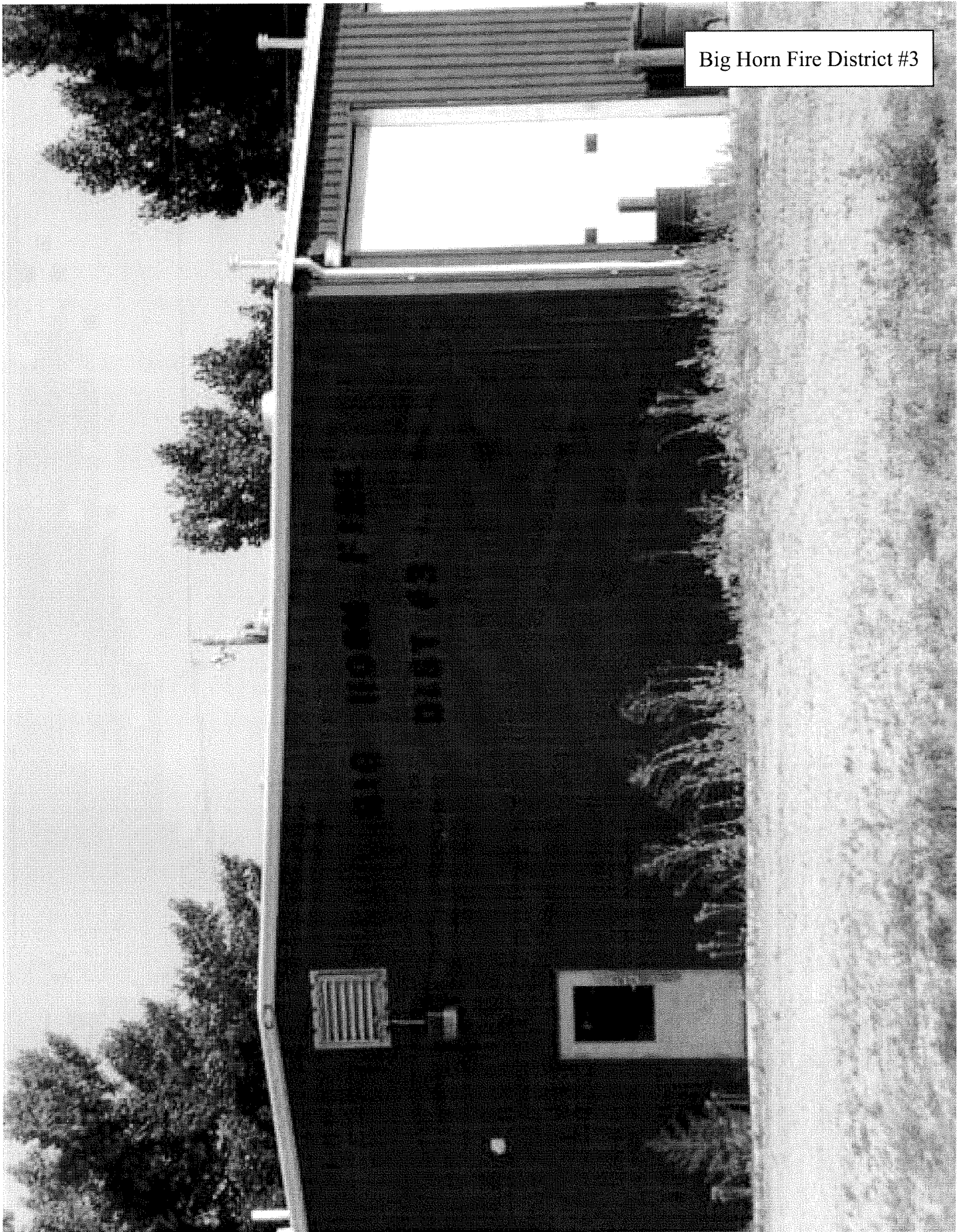


U.S. Post Office, Manderson, WY

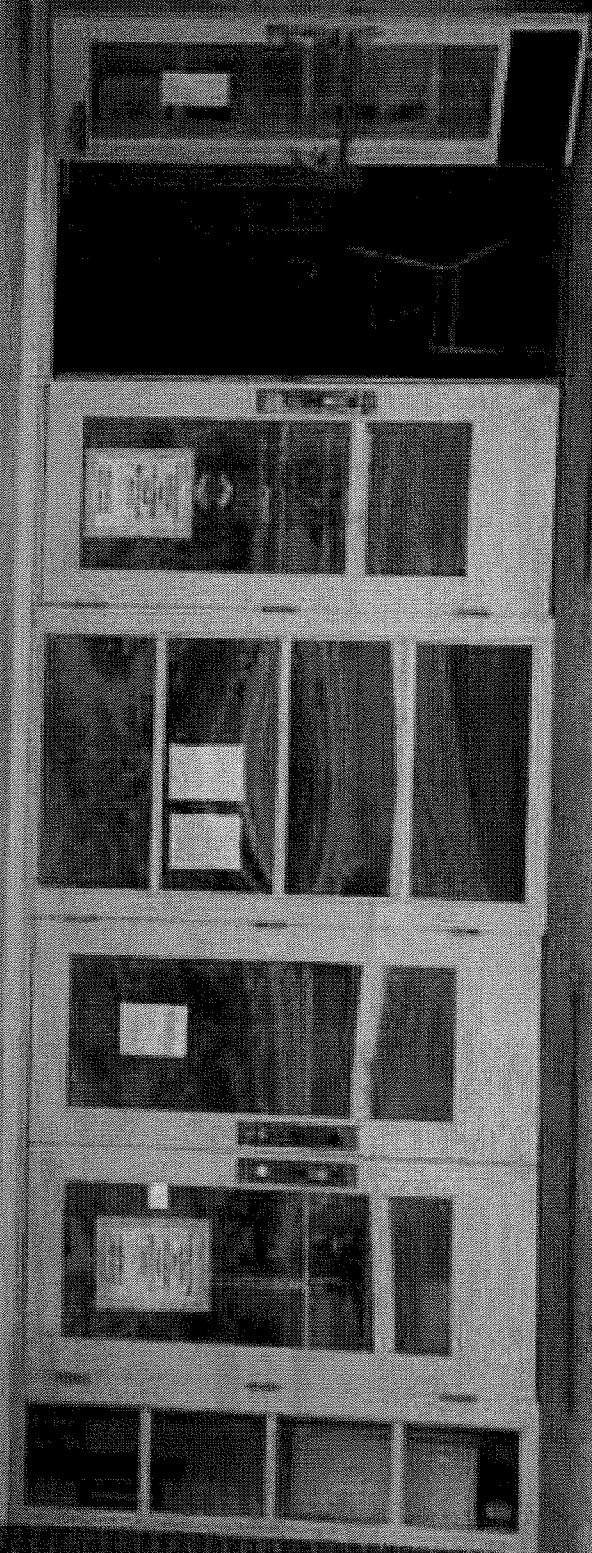
UNITED STATES
POST OFFICE
MANDERSON, WYOMING
82432

1933

Big Horn Fire District #3



CLOUD PEAK SCHOOL





Manderson Kwik Stop

