

TECHNICAL EXHIBIT
MINOR CHANGE COMPANION CHANNEL APPLICATION
LPTV STATION KPBN-LP (FACILITY ID 167737)
BATON ROUGE, LOUISIANA
CH 14 15 KW

Technical Narrative

This Technical Exhibit supports a “long-form” application for LPTV station KPBN-LP. Station KPBN-LP is licensed to operate on analog channel 11 with a directional antenna maximum (visual) effective radiated power (ERP) of 0.195 kW and an antenna height above mean sea level (RCAMSL) of 97 meters (BLTVL-19960409JB).

KPBN-LP filed a companion channel application for channel 14 (BSFDTL-20060630BLK) which is noted on the Commission’s Auction no. 85 non-mutually exclusive proposal list (DA 06-1748). The FCC requires that "long-form" applications be filed by October 30, 2006. Therefore, this application is being filed to cover that “short-form” proposal.

Proposed Facilities

This application proposes digital operation on channel (14), at a new transmitter site. The proposed site coordinates are (NAD27): 30-27-00 N, 91-07-59 W. A Scala (SCA) model SL-8 non-directional antenna, with an ERP of 15 kW and antenna RCAMSL of 65.5 meters is proposed.

The existing 53 meter structure does not require registration as the FCC’s TOWAIR program indicates there are no airports within 8 kilometers (5 miles).

Figure 2 is a map showing the licensed 74 dBu (analog) and proposed 51 dBu (digital) coverage contours. As can be seen on the map, there is common area where both contours overlap.

Allocation Considerations

A study has been conducted to assure that the proposal will not create prohibited interference with other licensed, authorized or pending analog or digital TV, LPTV/translator and Class A TV stations. Using the procedures outlined in the FCC's OET-69 Bulletin, a 1-kilometer cell size resolution and 1990 U.S. Census, the proposal complies with the current FCC policy (i.e., less than 0.5% new interference caused to other pertinent assignments). If necessary, a waiver of the FCC rules is respectfully requested based on use of the procedures outlined in the FCC's OET-69 Bulletin to the remaining LPTV/translator stations.

The applicant recognizes the proposal is secondary to authorized full-service analog and DTV operations. The applicant understands that it must correct and/or eliminate prohibited interference that may result from its proposed operation.

Radiofrequency Electromagnetic Field Exposure

The proposed KPBN-LP facilities were evaluated in terms of potential radio frequency (RF) energy exposure at ground level to workers and the general public. The radiation center for the antenna is located 27 meters above rooftop level. The proposed maximum ERP is 15 kW. Based on a conservative vertical relative field of 0.25, the calculated power density at a point 2 meters (6.6 feet) above rooftop level will not exceed 0.051 mW/cm^2 , which is 16% of the FCC's recommended limit of 0.32 mW/cm^2 for channel 14, applicable to general population/uncontrolled exposure areas. Since there are no other known broadcast operations on the structure, the total contribution from KPBN-LP (16%) is in compliance with the recommended limits (i.e., less than 100%).

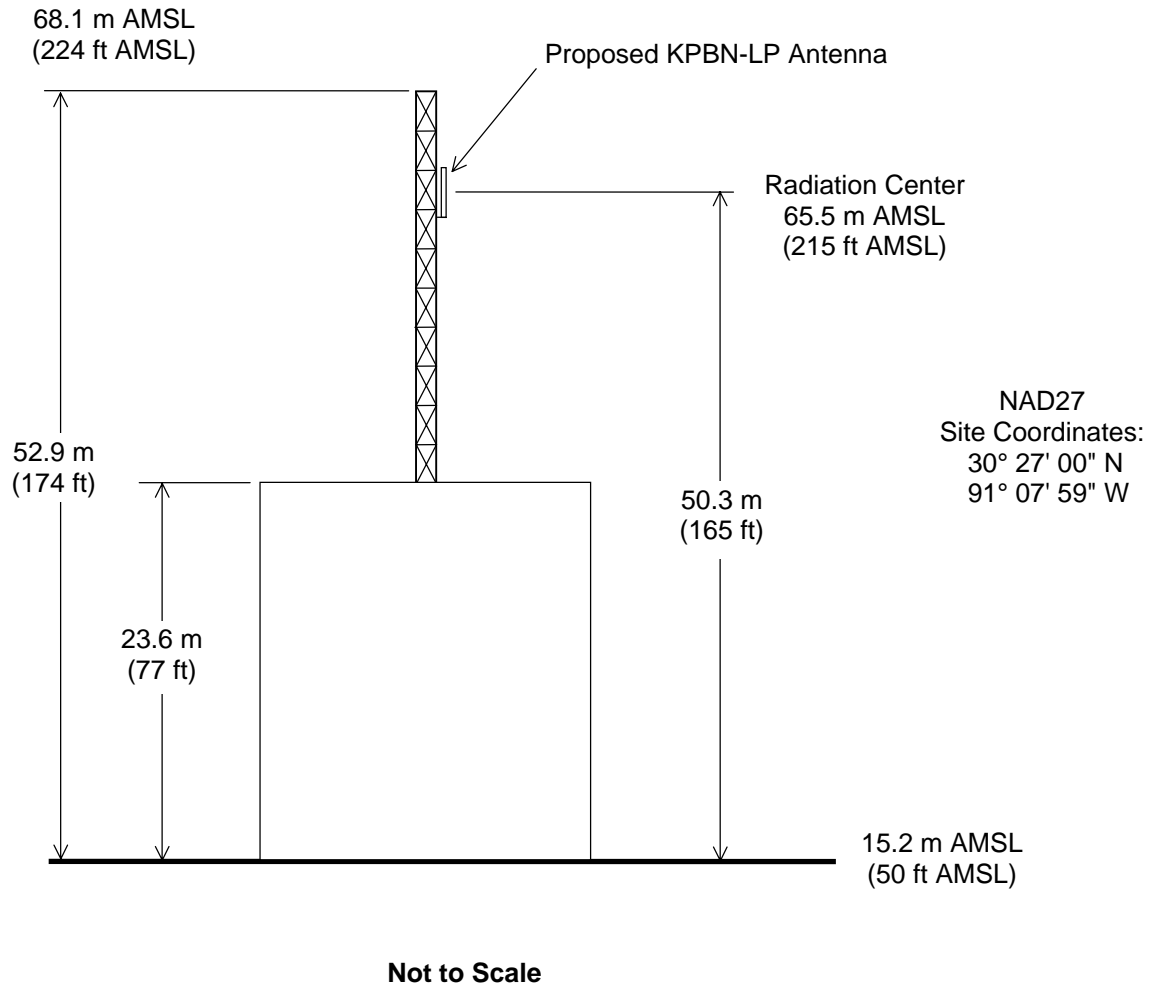
Access to the transmitting site will be restricted and appropriately marked with warning signs. In the event that workers or other authorized personnel enter restricted areas or climb the tower, appropriate measures will be taken to assure worker safety with respect to radio frequency radiation exposure. Such measures include reducing the average exposure by spreading out the work over a longer period of time, wearing "accepted" RFR protective clothing and/or RFR exposure monitors or scheduling work when the stations are at reduced power or shut down. It is noted that this statement only addresses the potential for radiofrequency electromagnetic field exposure.



Jonathan N. Edwards

du Treil, Lundin & Rackley, Inc.
201 Fletcher Avenue
Sarasota, Florida 34237
(941) 329-6000

September 14, 2006

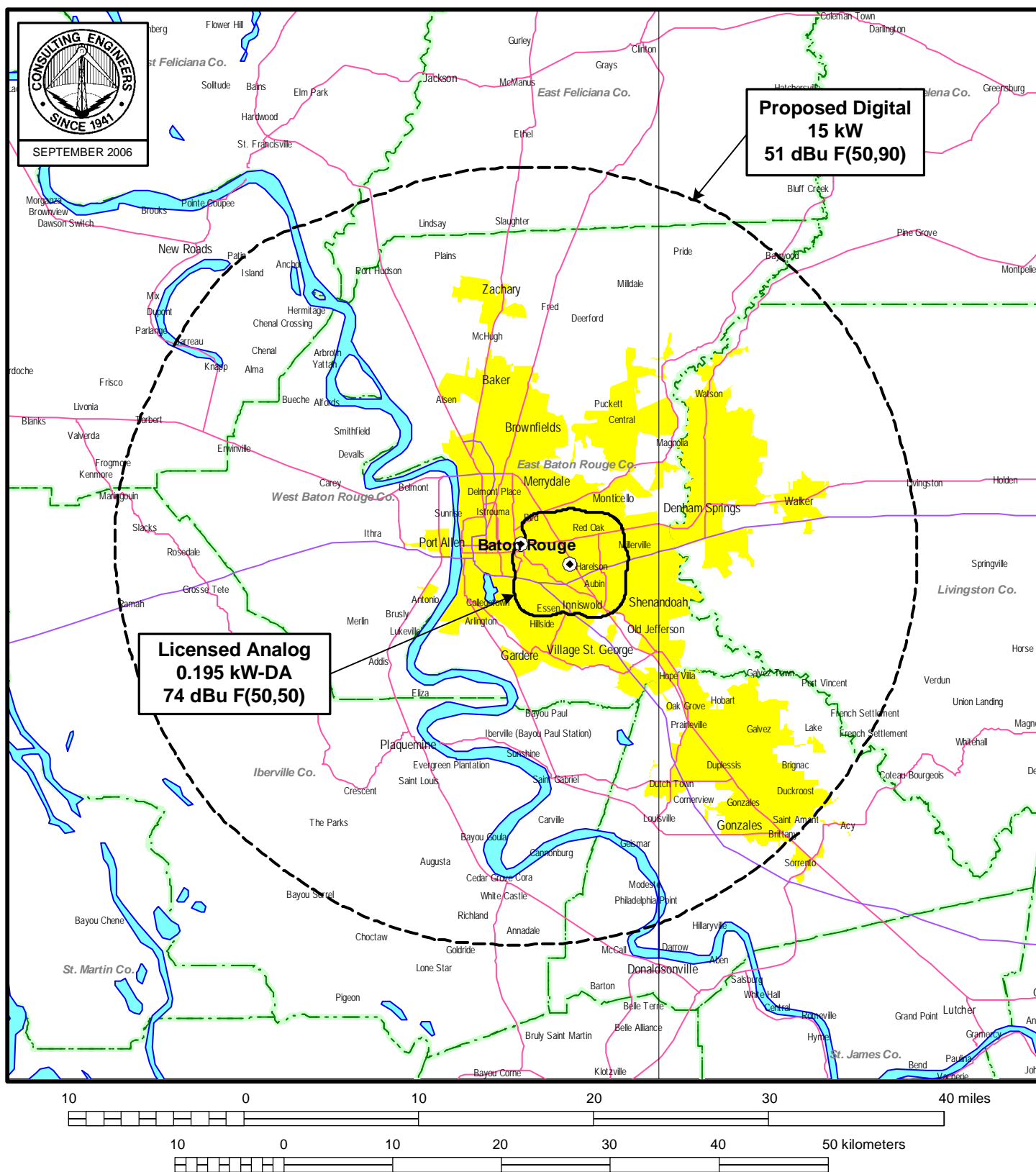


ANTENNA AND SUPPORTING STRUCTURE

STATION KPBN-LP
BATON ROUGE, LOUISIANA
CH 14 15 KW

du Treil, Lundin & Rackley, Inc. Sarasota, Florida

Figure 2



PREDICTED COVERAGE CONTOURS

STATION KPBN-LP

BATON ROUGE, LOUISIANA

CH 14 15 KW

du Treil, Lundin & Rackley, Inc Sarasota, Florida