

Channel Study

REFERENCE		CH# 276D - 103.1 MHz, Pwr= 0.17 kW, HAAT=88.9M, COR= 267 M						DISPLAY DATES		
29 49 51.0 N.		Average Protected F(50-50)= 11.1 km						DATA 03-12-07		
97 53 31.0 W.								SEARCH 03-12-07		
CH CITY	CALL	TYPE STATE	AZI. <--	DIST FILE #	LAT. LNG.	Pwr(kW) HAAT(M)	INT(km) COR(M)	PRO(km) LICENSEE	*IN* (Overlap in km)	*OUT*
278C0 San Marcos	KBPA	LIC CY TX	2.6 182.6	23.77 BLH19880113KA	30 02 42.0 97 52 50.0	100.000 398	11.5 608	79.6 Emmis Austin Radio Broadca	1.80	-56.79*
276C2 Karnes City	KTX	LIC CX TX	166.5 346.6	93.08 BLH20050325AEH	29 00 52.0 97 40 02.0	34.000 157	130.1 293	49.6 Palm Broadcasting Company	-49.16	1.92
276C2 Karnes City	KTX	APP ZVX TX	184.5 4.5	108.25 BPH20070119AEJ	28 51 26.0 97 58 49.0	50.000 167	140.0 267	54.3 Palm Broadcasting Company	-43.56	13.53
276C2 Karnes City	KTX	APP NCX TX	188.1 8.1	100.74 BPH20070119AEJ	28 55 52.0 98 02 20.0	22.000 233	129.6 337	52.6 Palm Broadcasting Company	-40.81	7.36
276C2 Karnes City	KTX	APP NCX TX	188.1 8.1	100.74 BPH20070119AEJ	28 55 52.0 98 02 20.0	22.000 233	129.6 337	52.6 Palm Broadcasting Company	-40.81	7.36
276D San Marcos	K276EL	CP DC TX	286.1 106.1	5.14 BMPFT20060117ABH	29 50 37.0 97 56 35.0	0.000 68	6.3 230	2.0 Educational Media Foundati	-8.64*	-21.98
274C1 San Antonio	KJXK	LIC EX TX	231.4 51.1	73.31 BLH20030818AEV	29 25 06.0 98 29 01.0	100.000 191	8.0 408	62.9 Texas Cbs Radio Broadcasti	54.47	9.47
276C3 Copperas Cove	KSSM	LIC NCX TX	357.7 177.6	139.12 BLH20040730BBW	31 05 05.0 97 57 07.0	8.600 189	105.3 467	40.9 Cumulus Licensing Llc	23.31	62.55
276A Bandera	KEEP	LIC NC TX	271.7 91.1	115.87 BMLH20000823ACP	29 51 21.0 99 05 26.0	3.500 88	76.1 626	23.7 J. & J. Fritz Media, Ltd.	31.29	64.15
222D Austin	AP3066	APP DC TX	11.4 191.4	41.25 BNPFT20030313AUC	30 11 44.0 97 48 25.0	1.400 5	3.5 250	17.0 Faith Pleases God Church C	3.0R	38.3M
222D Austin	AP0506	APP C TX	358.8 178.8	46.41 BNPFT20030314BCV	30 14 58.0 97 54 08.0	1.400 5	3.5 336	17.0 Lisa Lopez	3.0R	43.4M
274D Austin	K274AX	LIC C TX	9.0 189.0	55.28 BLFT20060626AAK	30 19 24.0 97 48 06.0	0.075 128	0.6 348	10.8 Big Bend Broadcasting	44.48	43.55
223D Del Valle	AP9148	APP DC TX	14.2 194.3	51.26 BNPFT20030317EDR	30 16 44.0 97 45 37.0	1.400 5	3.5 228	17.0 Kevin J. Youngers	3.0R	48.3M
223D Bee Cave	AP9559	APP C TX	355.4 175.4	52.70 BNPFT20030317GQP	30 18 17.0 97 56 10.0	1.400 5	3.5 300	17.0 Katherine Pyeatt	3.0R	49.7M
222D Austin	AP8261	APP C TX	9.0 189.0	55.28 BNPFT20030317ADU	30 19 24.0 97 48 06.0	1.400 5	3.5 425	17.0 Bible Broadcasting Network	3.0R	52.3M
278D China Grove	AP9959	APP DC TX	230.4 50.2	64.64 BNPFT20030314AUH	29 27 34.0 98 24 24.0	0.000 100	0.0 329	1.5 Faith Pleases God Church C	53.79	62.24
223A Elgin	KKLB	LIC ZCX TX	47.5 227.8	63.97 BLH20060516ACP	30 13 07.0 97 24 03.0	1.400 5	3.5 273	17.0 Bmp Austin License Company	10.0R	54.0M
222D Greenshores	AP0331	APP C TX	6.7 186.7	57.09 BNPFT20030314BBS	30 20 32.4 97 49 20.7	1.400 5	3.5 207	17.0 Primera Iglesia Evangelica	3.0R	54.1M
274D Smithville	K274BB	LIC C TX	64.9 245.2	68.38 BLFT20060227AHU	30 05 23.0 97 14 56.0	0.170 105	0.9 216	12.0 Jeanne Aultfather	55.86	55.46
223D Comanche Trail	AP0140	APP C TX	0.1 180.1	64.85 BNPFT20030313BNR	30 24 57.0 97 53 25.0	1.400 5	3.5 244	17.0 Big Bend Broadcasting	3.0R	61.8M
279D San Antonio	K279AB	LIC DV TX	241.5 61.2	74.96 BLFT19970804TI	29 30 28.0 98 34 20.0	0.023 125	0.3 378	8.0 Wildcatter Wireless, Llc	64.00	66.08

Terrain database is NGDC 30 SEC

ERP and HAAT on direct-line with reference station.

""affixed to 'IN' or 'Out' values = site inside protected contour.

**Compliance with C.F.R. 74.1204**

The proposed FM Translator is located within the protected 60 dBu contour of second adjacent channel station KBPA, channel 278C0, San Marcos, TX. The predicted F(50-50) field strength of KBPA at the proposed translator site is 87.5 dBu, (see Exhibit 12A-1). Therefore, the respective predicted interfering contour generated by the proposed FM Translator is 127.5 dBu. This interfering contour extends approximately 38.5 meters from the proposed transmit antenna, and the area of overlap does not reach the ground (the antenna will be mounted at the 78 meter level on a 79 meter tower).

To confirm the absence of population within the interference aperture, EMF has examined the attached topographic map (see Exhibit 12A-2), and aerial photo see Exhibit 12A-3), both indicating a lack of structures near the proposed tower, and therefore no structure which could be tall enough to enter the 38.5 meter interference aperture.

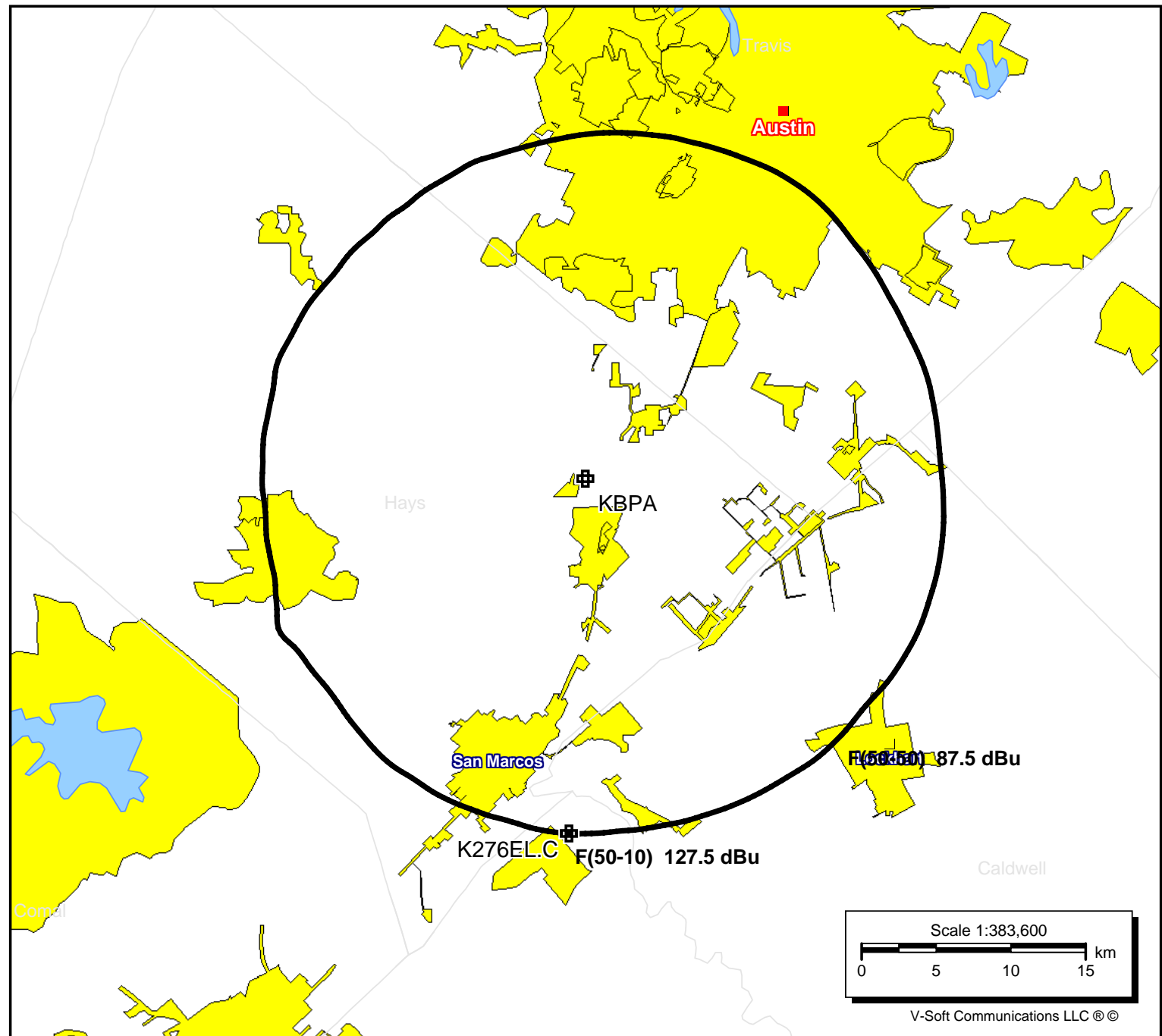
Therefore, EMF respectfully requests a waiver of C.F.R 74.1204 based on no population within the area of predicted interference.

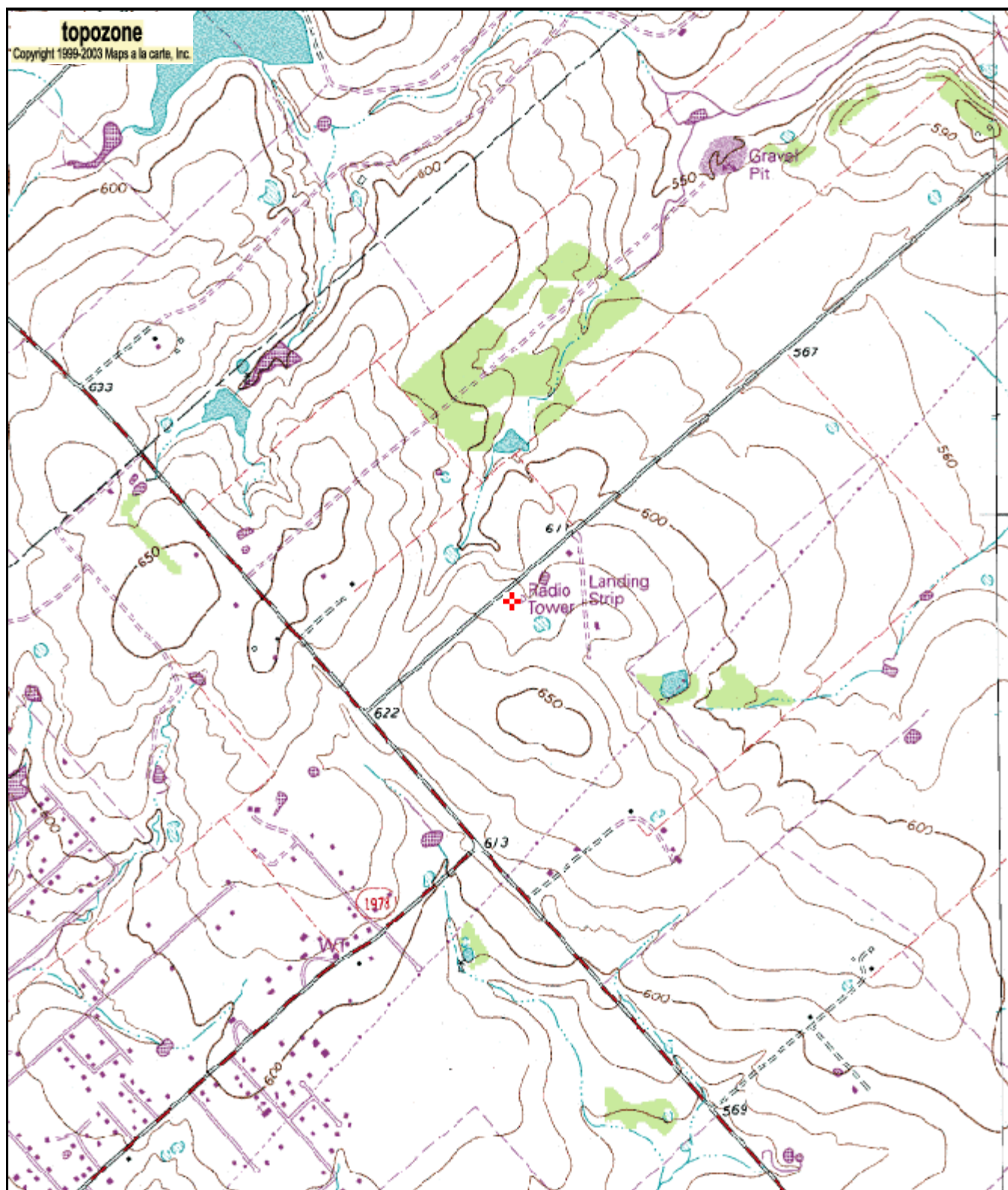
**K276EL.C**

Latitude: 29-49-51 N  
Longitude: 097-53-31 W  
ERP: 0.17 kW  
Channel: 276  
Frequency: 103.1 MHz

**KBPA**

BLH19880113KA  
Latitude: 30-02-42 N  
Longitude: 097-52-50 W  
ERP: 100.00 kW  
Channel: 278  
Frequency: 103.5 MHz





0 0.3 0.6 0.9 1.2 1.5 km  
0 0.2 0.4 0.6 0.8 1 mi

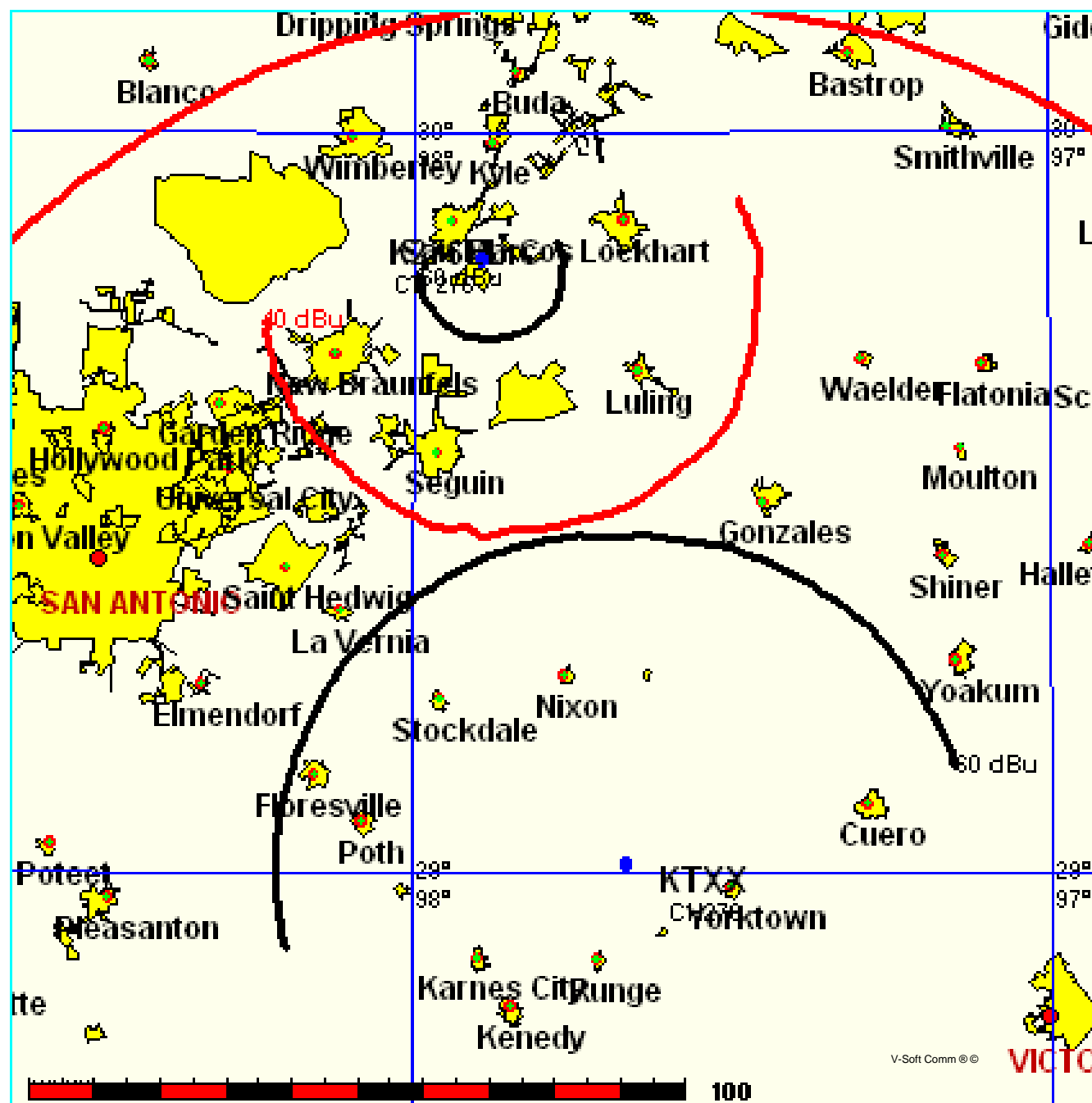
29° 49' 51"N, 97° 53' 31"W (NAD27)  
**USGS San Marcos South (TX) Quadrangle**  
Projection is UTM Zone 14 NAD83 Datum

M=5.543  
G=0.551



FMCommander Single Allocation Study  
03-09-2007K276EL.C CH 276 D  
0.17 kW 267 M COR  
Prot. = 60 dBu  
Intef. = 40 dBuKTXX CH 276 C2 BLH20050325AEH  
34.0 kW, 293 M COR  
Prot. = 60 dBu  
Intef. = 40 dBu

Scale = 1:1,500,000



FMCommander Single Allocation Study  
03-09-2007

K276EL.C CH 276 D  
0.17 kW 267 M COR  
Prot. = 60 dBu  
Intef. = 40 dBu

KTXX-A CH 276 C2 BPH20070119AEJ  
22.0 kW, 337 M COR  
Prot. = 60 dBu  
Intef. = 40 dBu

Scale = 1:2,000,000

