

photographs and maps of the project, and a copy of the State Historic Preservation Office response.

As this project is proposed for development in the very near future, we would appreciate receiving your comments within 10 days of receipt of this letter. If you have any questions regarding the proposed development or wish to discuss this project in more detail, please do not hesitate to contact us.

Your assistance is greatly appreciated and we look forward to hearing from you even if you should decide that this project is of no interest to your tribe.

Very truly yours,
**Dynamic Environmental
Associates, Inc.**



Virginia (M) Janssen
Principal Archaeologist

Contact Information:

Dynamic Environmental Associates, Inc.
3850 Lake Street, Suite C
Macon, GA 31204
Phone: (478) 745-7740
Fax: (478) 745-7415
E-mail: NATC@DynamicEnvironmental.com

enc:



Illinois Historic Preservation Agency

1 Old State Capitol Plaza • Springfield, Illinois 62701-1512 • www.illinois-history.gov

Jackson County

PLEASE REFER TO:

IHPA LOG #006122110

DeSoto

North side of Crane Road, West of Bowlby Road

DEA-21011002

Telecommunication Tower, New Construction

January 26, 2011

Virginia M. Janssen

Dynamic Environmental Associates, Inc.

3850 Lake Street, Suite C

Macon, GA 31204

Dear Ms. Janssen:

We have reviewed the documentation submitted for the referenced project(s) in accordance with 36 CFR Part 800.4. Based upon the information provided, no historic properties are affected. We, therefore, have no objection to the undertaking proceeding as planned.

Please retain this letter in your files as evidence of compliance with section 106 of the National Historic Preservation Act of 1966, as amended. This clearance remains in effect for two (2) years from date of issuance. It does not pertain to any discovery during construction, nor is it a clearance for purposes of the Illinois Human Skeletal Remains Protection Act (20 ILCS 3440).

If you are an applicant, please submit a copy of this letter to the state or federal agency from which you obtain any permit, license, grant, or other assistance.

Sincerely,

Anne E. Haaker

Deputy State Historic

Preservation Officer

ADDITIONAL SITE INFORMATION

New Life Media has proposed to construct a broadcast tower facility in Jackson County, Illinois (Figure 1 and Figure 2). The proposed Site will consist of a 65' x 22' (6.7 x 19.8 m) tower compound area. Within the tower compound area will be a 125' (38.1 m) tall self-support tower and associated equipment. Proposed associated equipment includes a 15' x 12' (4.6 x 3.7 m) transmitter building, a propane tank and emergency generator, and an air conditioning unit. The approximately 15' (4.6 m) wide proposed access easement will extend approximately 165' (50.3 m) north and then east from Crane Road to end at the tower compound area. The approximately 5' wide (1.5 m) proposed utility easement will extend south from the tower compound area approximately 120' (36.6 m) to Crane Road. The direct APE for this project is a total of 0.18 acres.

AREAS OF POTENTIAL EFFECT

APE for Direct Effects

The APE for direct effects is the construction site for the proposed broadcast tower facility, where such construction would result in ground disturbance and dislocation of soil. This area of potential direct effects, determined by an examination of plan maps provided by New Life Media, consists of the 65' x 22' (19.8 x 6.7 m) tower compound area, the proposed 15' x 165' (4.6 x 50.3 m) access easement, and a proposed 5' x 120' (1.5 x 36.6 m) long utility easement.

APE for Visual Effects

The APE for visual effects is the geographic area in which the proposed undertaking has the potential to introduce visual elements that would diminish or alter the setting of any historic property where integrity of setting is a character-defining feature of such property that, in part, makes it eligible for the National Register of Historic Places (National Register). Specifically, this geographic area is the extent to which the proposed broadcast tower would be visible, and if so, would have the potential to introduce visual elements that would alter or diminish the integrity of any historic property's relationship to surrounding features and open space, therefore compromising the ability of such property to convey its historic significance.

In accordance with the Nationwide Programmatic Agreement of March 2005, a one-half mile (.8 km) APE for visual effects is applicable to this 125' (38.1 m) tall broadcast tower (See Figure 4 and Figure 5).

IDENTIFICATION OF HISTORIC PROPERTIES & ASSESSMENT OF DIRECT EFFECTS

A review of records held by the Illinois State Museum indicated that no previously recorded archaeological sites are located within the immediate vicinity of the APE for direct effects. In addition, no previous cultural resource surveys have been conducted within one-half mile of the proposed undertaking.

Archaeological fieldwork, performed primarily to determine the presence of previously unrecorded historic resources within the APE for direct effects, was conducted under the direction of Virginia Janssen on November 22, 2010. The project area consists of a fallow agricultural field located at the top of a small rise.

Both surface inspection and the excavation of subsurface tests were used to investigate the potential for unrecorded historic resources within the APE for direct effects (Figure 3). A single pedestrian transect was used to investigate each of the two proposed easements. Three pedestrian transects, spaced approximately 4 m apart, were utilized to investigate exposed surfaces within the tower compound area. A representative view of the ground surface exposure within the APE for direct effects is presented in Photograph 8.

Ten 30 x 30 cm subsurface tests were used to examine the APE for direct effects. Soils from these tests were dry-screened through 6 mm hardware cloth. Three shovel tests, spaced approximately 7 m apart were used to examine the tower compound area. Four shovel tests, spaced approximately 12 m apart, were used to examine the proposed access drive. Finally, three shovel tests, also spaced approximately 12 m apart, were used to examine the proposed utility easement. The same soil profile was encountered in all ten shovel tests exhibiting 0-20 cm of yellowish brown (Munsell 10YR 5/4) silty clay loam over 30 cm of brown (7.5YR 5/3) silty clay.

No archaeological features were noted on the surface, and no cultural material indicative of an archaeological site was recovered from the subsurface shovel tests. Therefore, it is the opinion of the principal investigator that no NRHP-eligible archeological site will be affected by this undertaking.

Nevertheless, it should be noted that ground disturbing activity should be halted when it is reasonable to believe that an archaeological site has been encountered which will be affected by this undertaking, and that the State Historic Preservation Office be notified of these finds. Also, if human burials or human remains are encountered during ground disturbance, it is imperative that local law enforcement, as well as the district medical examiner and the State Historic Preservation Office, is notified prior to resuming work.

IDENTIFICATION OF HISTORIC PROPERTIES & ASSESSMENT OF VISUAL EFFECTS

According to a review of records held by the Illinois State Museum, and a review of the Illinois Historic Preservation Agency's online Historic Architecture and Archaeological Resources Geographic Information System (HAARGIS) indicates no previously documented historic properties are located within the one-half mile APE for visual effects. Likewise, a review of the online National Register of Historic Places (NRHP) listings indicate no NRHP-listed resources are located within the one-half mile visual APE. In addition, no historic properties have been identified through comments of Indian Tribes, local governments, or members of the public.

PHOTOGRAPHS

The following photographs of the project site are presented herein:

1	View of the proposed tower location, facing north.
2	View of the proposed tower location, facing south.
3	View of the proposed tower location, facing east.
4	View of the proposed tower location, facing west.
5	View of the proposed access easement from the proposed tower compound, facing south.
6	View of the proposed access easement from Crane Road, facing north.
7	View of the proposed utility easement from Crane Road, facing north.
8	Close up view of representative ground surface exposure within the APE for direct effects.

Site photographs were recorded on November 22, 2010 using a lense focal length of 36 mm.



Photo 1 - View of the proposed tower location, facing north.



Photo 2 - View of the proposed tower location, facing south.



Photo 3 - View of the proposed tower location, facing east.



Photo 4 - View of the proposed tower location, facing west.



Photo 5 - View of the proposed access easement from the proposed tower compound, facing south.



Photo 6 - View of the proposed access easement from Crane Road, facing north.



Photo 7 - View of the proposed utility easement from Crane Road, facing north.

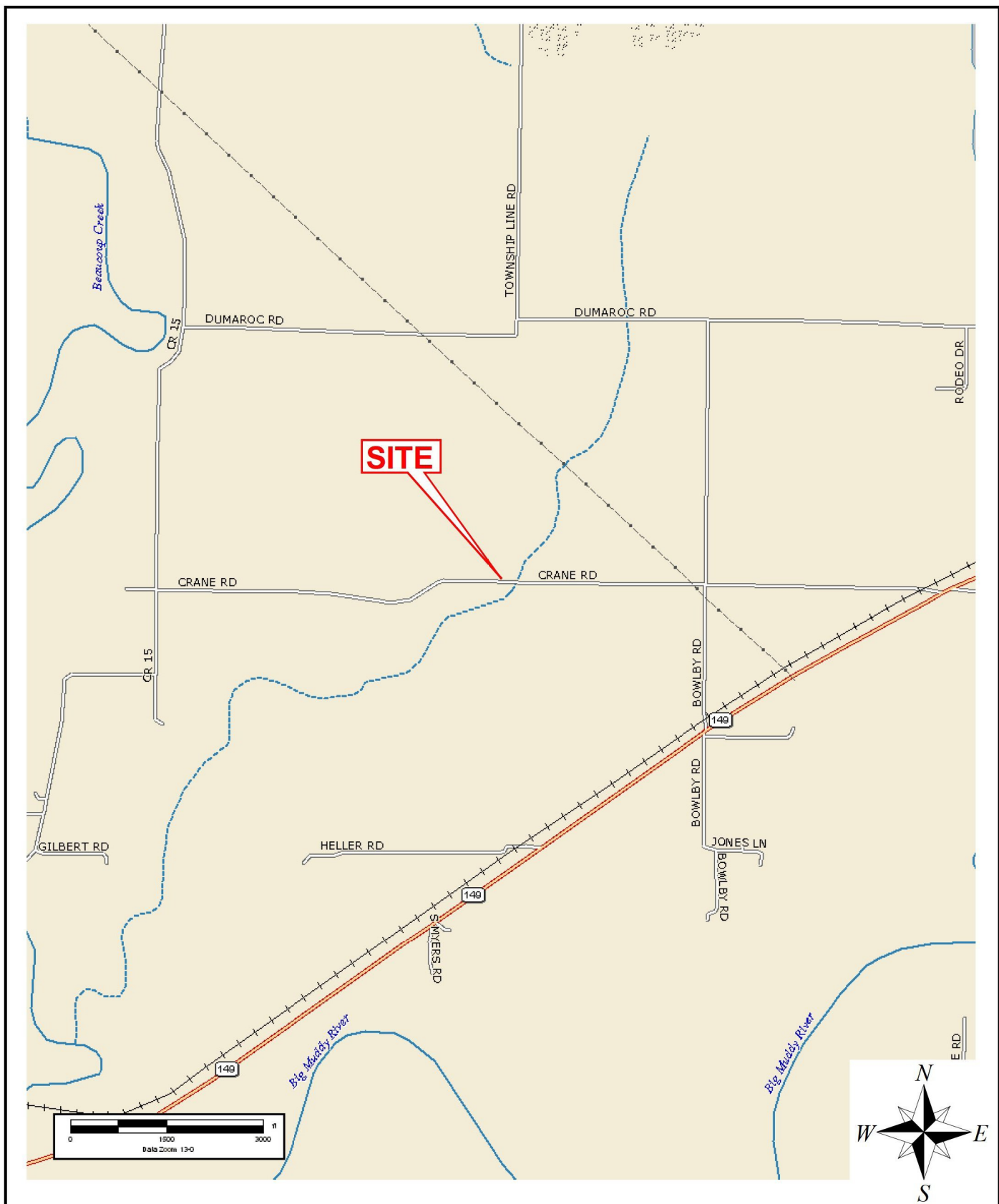


Photo 8 - Close up view of representative ground surface exposure within the APE for direct effects.

FIGURES

The following figures of the project site are presented herein:

Figure No.	<u>Figure Title</u>
1	Site Location Map
2	Site Plan
3	Archaeological Investigation Plan
4	U.S.G.S. Topographic Map, 7.5 Minute Series w/ 1 /2 Mile Visual APE
5	2004 Aerial Photograph w/ 1/2 Mile Visual APE



SITE LOCATION MAP



**DYNAMIC
ENVIRONMENTAL
ASSOCIATES, INC.**

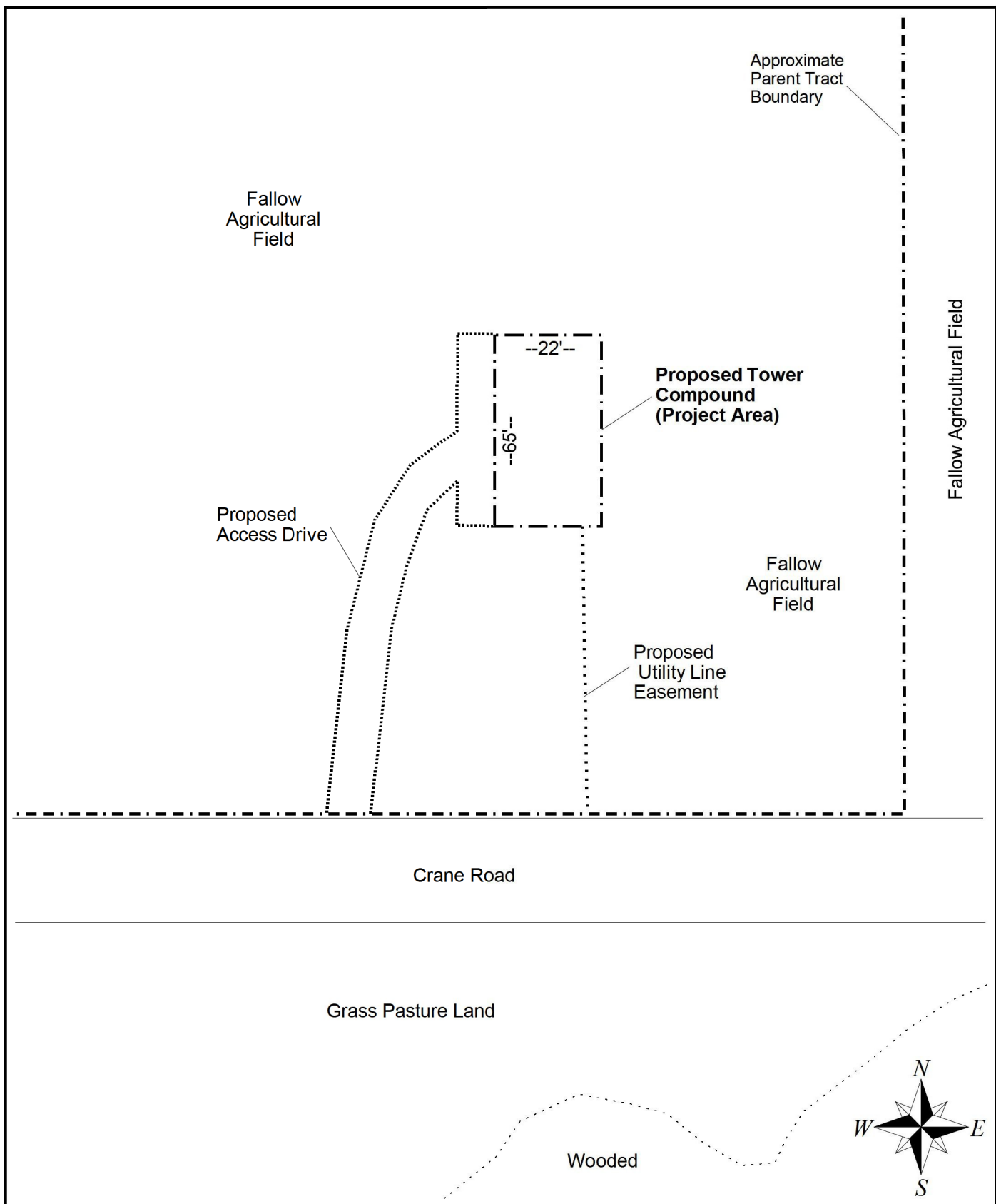
www.DynamicEnvironmental.com

**Section 106 Review
WIBI Murphysboro Tower Site
Jackson County, Illinois**

Figure No.: 1

Date: 12/01/10

DEA No.: 21011002



SITE PLAN



**DYNAMIC
ENVIRONMENTAL
ASSOCIATES, INC.**

www.DynamicEnvironmental.com

Section 106 Review
WIBI Murphysboro Tower Site
Jackson County, Illinois

Figure No.: 2

Date: 12/01/10

DEA No.: 21011002

