

**Exhibit 13.1 - Copy of Existing
Antenna Structure Registration****Registration Detail**

Reg Number	1007402	Status	Constructed
File Number	A0429025	Constructed	06/01/1988
FAA Study	96-AGL-3410-OE	EMI	No
FAA Issue Date	10/24/1996	NEPA	No

Antenna Structure

Structure Type TOWER - Free standing or Guyed Structure used for Communications Purposes

Location (in NAD83 Coordinates)

Lat/Long 45-20-50.0 N 084-58-01.0 W 2095 US HWY 131 S

City, State PETOSKEY , MI

Center of
AM Array**Heights (meters)**

Elevation of Site Above Mean Sea Level	Overall Height Above Ground (AGL)
268.2	131.7
Overall Height Above Mean Sea Level	Overall Height Above Ground w/o Appurtenances
399.9	130.8

Painting and Lighting Specifications

FAA Chapters 3, 4, 5, 9

Paint and Light in Accordance with FAA Circular Number 70/7460-1G

Owner & Contact Information

FRN	0008983033	Licensee ID	L00267268
Assignor FRN	0002764900	Assignor ID	L00086826

Owner

MacDonald Garber Broadcasting, Inc.
 Attention To: Patricia MacDonald
 2095 U.S. 131 South
 Petoskey , MI 49770

P: (231)347-8713
 E: tmac@106khq.com

Contact

P:
 E:

Last Action Status

Status	Constructed	Received	02/12/2005
Purpose	Change Owner	Entered	02/12/2005
Mode	Interactive		

Related Applications

02/12/2005	A0429025 - Change Owner (OC)
11/01/1996	A0008803 - New (NE)

Comments**Comments**

Exhibit 13.2

Vertical Plan of Antenna System

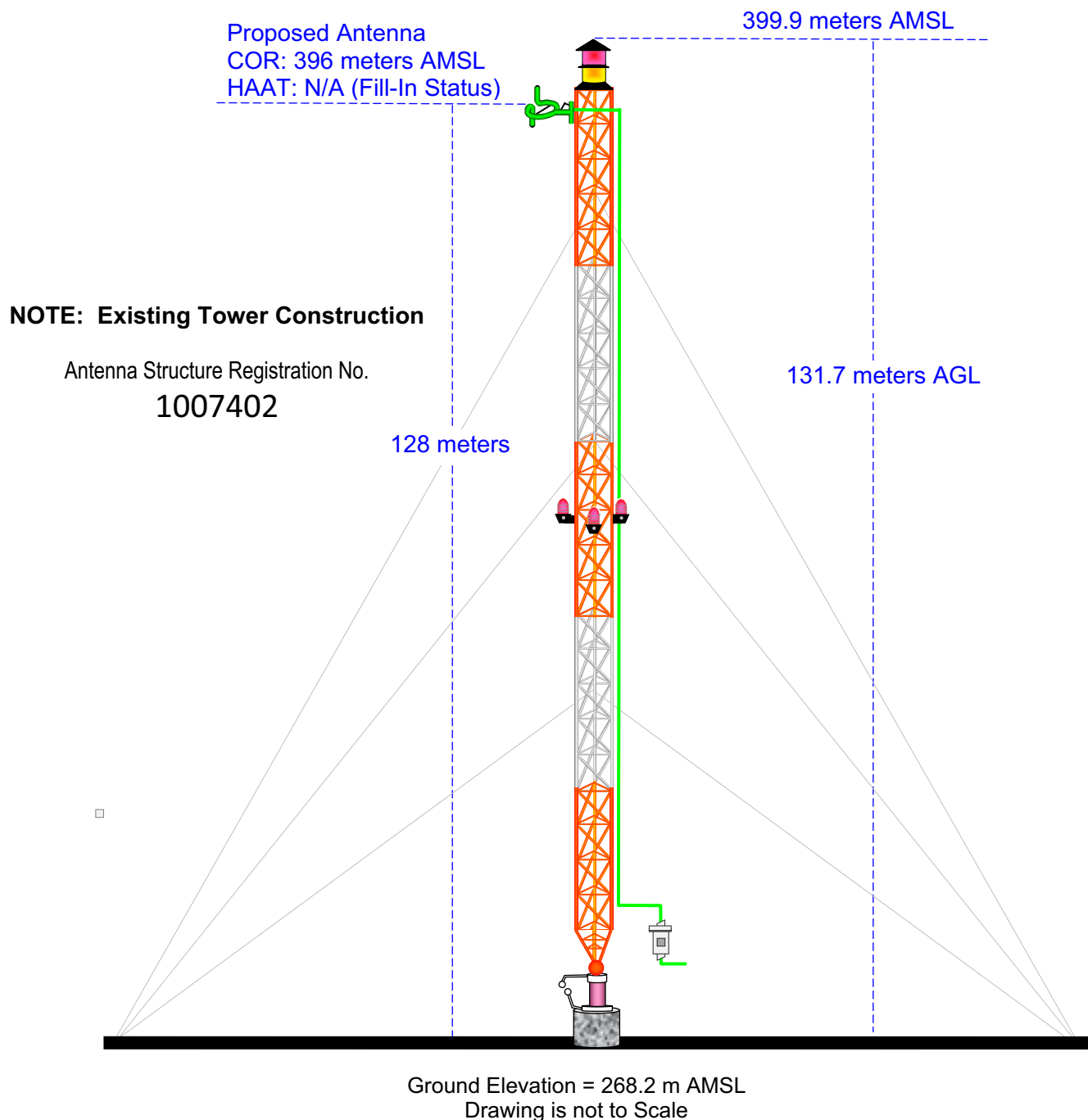
The site is located at 2095 US Highway 131 South,
the city of Petoskey, Emmet County, Michigan.

Site Location (NAD 27)

NL: 45° 20' 50"

WL: 84° 58' 01"

(45-20-50.0NL; 84-58-01.0WL NAD 83)



Terrain
176 403 m

USGS 03 Sec Terrain Database
U.S. Census 2010 PL Database

Exhibit 13.3 Present vs. Proposed Service Contour Study

Proposed 60 dBu F(50:50) Contour

Licensed 60 dBu F(50:50) Contour

W221BQ.P
Proposed Operation
Latitude: 45-20-50 N
Longitude: 084-58-01 W
ERP: 0.026 kW
Channel: 221
Frequency: 92.1 MHz
AMSL Height: 396.0 m
Horiz. Pattern: Omni
Vert. Pattern: No
Prop Model: None

60 dBu Contour
Total Population: 15,846
Total Area: 293 sq. km

W221BQ.P
W221BQ.L

W221BQ.L
BLFT20070525AAA
Latitude: 45-20-50 N
Longitude: 084-58-00.80 W
ERP: 0.01 kW
Channel: 221
Frequency: 92.1 MHz
AMSL Height: 393.0 m
Horiz. Pattern: Omni
Vert. Pattern: No
Prop Model: None

60 dBu Contour
Total Population: 12,764
Total Area: 177 sq. km

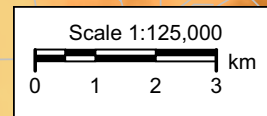


Exhibit 13.4 Proposed vs. Primary Service Contour Study

Terrain
166 469 m

USGS 03 Sec Terrain Database
U.S. Census 2010 PL Database

Call: WMKT(AM)
BL-20060308AMI
Freq: 1270 kHz
CHARLEVOIX, MI, US
Hours: D
Lat: 45-16-22 N
Lng: 085-15-08 W
Power: 27.0 kW
RMS: 294.99 mV/m
@ 1km @ 1kW

W221BQ.P
Proposed Operation
Latitude: 45-20-50 N
Longitude: 084-58-01 W
ERP: 0.026 kW
Channel: 221
Frequency: 92.1 MHz
AMSL Height: 396.0 m
Horiz. Pattern: Omni
Vert. Pattern: No

Proposed 60 dBu F(50:50) Contour

2 mV/m Daytime AM Contour

25 mile AM Site Radius

W221BQ.P

WMKT(AM)
+

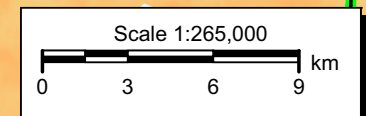


Exhibit 13.5

Tabulation of Proposed Allocation

Macdonald Garber Broadcasting, Inc.											
REFERENCE		CH#	221D	-	92.1 MHz, Pwr= 0.026 kw, HAAT= 169.7 M, COR= 396 M	Average Protected F(50-50)= 9.69 km		Omni-directional		DISPLAY DATES	
45 20 50.0 N.										DATA 08-03-11	
84 58 01.0 W.										SEARCH 08-04-11	
CH	CALL	TYPE	ANT	AZI	DIST	LAT	PWR(kw)	INT(km)	PRO(km)	*IN*	*OUT*
CITY		STATE		<--	FILE #	LNG	HAAT(M)	COR(M)	LICENSEE	(Overlap in km)	
221D	W221BQ	LIC _C_		0.0	0.0	45 20 50.0	0.010	25.0	7.4	-34.4*	-38.8*
Petoskey		MI		270.0	BLFT20070525AAA	84 58 00.8	167	393	Macdonald Garber Broadcast		
221C	AL4884	AL		20.6	148.7	46 35 50.0	100.000	203.3	97.0	-64.3*<	7.0
Sault Ste Marie		ON		201.1		84 16 53.0	600	883			
SPEC. NEGTD SHORT-SPACED ALLOC. - LTD TO 100KW/300M OR EQUIV.											
223C1	WFDX	LIC _CN		127.1	60.7	45 01 00.0	100.000	10.1	72.2	41.4	-12.0*<
Atlanta		MI		307.6	BLH19881107KA	84 21 10.0	265	609	Northern Michigan Radio, I		
219C0	WCML-FM	LIC _CX		110.0	67.2	45 08 17.3	92.000	10.9	76.5	48.8	-9.7*<
Alpena		MI		290.5	BLED20101006AAG	84 09 43.6	364	641	Central Michigan Universit		
221D	W221CA	LIC _C_		144.4	44.5	45 01 16.0	0.013	13.1	4.2	21.7	8.1
Gaylord		MI		324.6	BLFT20080530AGM	84 38 12.0	62	445	Baraga Broadcasting, Inc.		
221A	WTWS	LIC NCX		171.4	118.9	44 17 21.0	0.920	77.8	26.9	31.9	61.2
Houghton Lake		MI		351.5	BLH20080919AFJ	84 44 32.0	228	577	Coltrace Communications, I		
222C2	WBNZ	LIC ZCX		229.3	124.8	44 36 38.0	50.000	58.7	39.2	55.8	71.3
Frankfort		MI		48.5	BLH20110224AAK	86 09 38.0	136	346	Roy E. Henderson		
218C3	WICA	LIC DC_		220.6	86.3	44 45 22.0	4.000	1.0	21.4	75.2	64.5
Traverse City		MI		40.1	BLED20001114AAH	85 40 42.0	228	466	Interlochen Center For The		
220C3	WGCP	APP NCX		206.6	132.9	44 16 33.0	2.100	51.9	34.6	71.5	85.0
Cadillac		MI		26.0	BPED20110726AJI	85 42 48.0	311	659	West Central Michigan Medi		
224C2	WPIQ	LIC _CX		300.8	137.1	45 58 00.0	24.500	5.8	52.2	120.1	84.2
Manistique		MI		119.7	BLH20100504AKS	86 29 17.0	217	425	Todd Stuart Noordyk		
220A	WGCP	LIC ZCX		199.4	125.0	44 17 08.0	2.100	21.7	14.5	93.9	97.3
Cadillac		MI		19.0	BLED20091201ASN	85 29 20.0	44	449	West Central Michigan Medi		
218A	WJOH	LIC _CX		18.3	122.4	46 23 28.0	5.500	2.5	25.8	110.0	96.3
Raco		MI		198.7	BLED20060427AFF	84 27 52.0	100	301	Michigan Community Radio		
220C2	WHDI	CP _CX		266.6	166.5	45 14 19.0	13.000	59.8	40.1	97.2	113.0
Sister Bay		WI		85.1	BPED20100407AAI	87 05 27.0	145	328	State of Wisconsin - Educa		
7/12/2010: Accepted on channel 220-B by Industry Canada in 6/28/2010 letter. Note: not short-spaced.											
220D	W220AJ	LIC _HN		305.2	119.4	45 57 33.0	0.017	7.4	5.3	101.0	98.3
Manistique		MI		124.3	BLFT19920511TC	86 13 45.0	49	240	Bd. of Control Northern Mi		
Translator for WNMUFM, Marquette, MI											

Terrain database is USGS 03 SEC , R= 73.215 qualifying spacings or FCC minimum spacings in KM, M= Margin in KM
 Contour distances are on direct line to and from reference station. Reference zone= East Zone, Co to 3rd adjacent.
 Ant Column: (D= DA Standard, Z= DA 73.215, N= Not DA 73.215, _= Omni), Polarization (C,H,V,E), Beamtilt(Y,N,X)
 "*"affixed to 'IN' or 'OUT' values = site inside protected contour.
 < = Contour Overlap

Blue Highlighted Text denotes the W221BQ facility to be modified by this proposal. As a result, this facility need not be protected.

Yellow highlighted text denotes a §74.1204(d) Waiver Request for given second adjacent channel interference toward WFDX(FM) - Atlanta, MI CH223C1 and WCML-FM - Alpena, MI CH219C0 as included in **Exhibit 13.6**. Full protection will be afforded both facilities as the calculated interference area will not reach the ground nor a 7 meter artificial plane representing a standard two story building when taking into account the downward radiation characteristics of the antenna as supplied by the antenna manufacturer. A copy of the antenna manufacturer specifications have been included in **Exhibit 13.7**.

WFDX(FM) - 103.75 dBu F(50:50)

WCML-FM - 63.75 dBu F(50:50)

✦K275BQ.P - 103.75 dBu F(50:10)

W221BQ.P

W221BQ.P

Proposed Operation

Latitude: 45-20-50 N

Longitude: 084-58-01 W

ERP: 0.026 kW

Channel: 221

Frequency: 92.1 MHz

AMSL Height: 396.0 m

Horiz. Pattern: Omni

Vert. Pattern: No

Prop Model: None

Exhibit 13.6

§74.1204(d) Second Adjacent Channel Given Interference Waiver Request with

WFDX(FM) - CH223C1 - Atlanta, MI

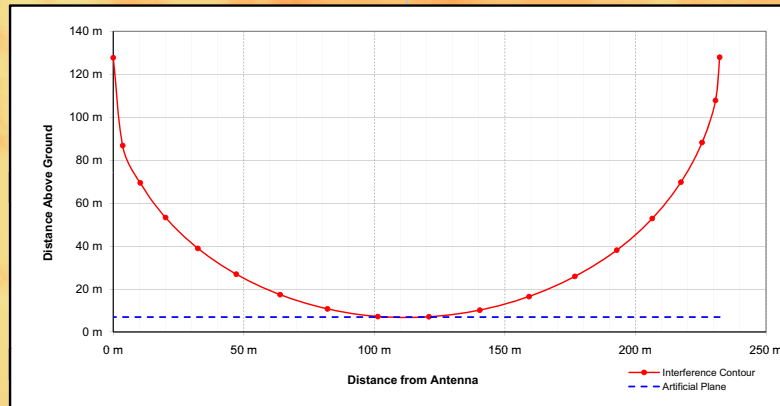
WCML-FM - CH219C0 - Alpena, MI

Terrain

176

470 m

USGS 03 SEC terrain database
U.S. Census 2010 PL1 database



WFDX(FM)

BLH19881107KA

Latitude: 45-01-00 N

Longitude: 084-21-10 W

ERP: 100.00 kW

Channel: 223

Frequency: 92.5 MHz

AMSL Height: 609.0 m

Horiz. Pattern: Omni

Vert. Pattern: No

Prop Model: None

WCML-FM

BLED20101006AAG

Latitude: 45-08-17.30 N

Longitude: 084-09-43.60 W

ERP: 92.00 kW

Channel: 219

Frequency: 91.7 MHz

AMSL Height: 641.0 m

Horiz. Pattern: Omni

Vert. Pattern: No

Prop Model: None

Proposed Antenna: 1 Bay SWR FM1 (FMEC-1) - Fully Spaced
Proposed Power: 0.026 kW
Antenna Height AGL: 128 meters
Interference Contour: 103.75 dBu f(50:10)
Artificial Ground Plane Height: 7 meters
Distance (Free Space) Equation: $\approx (10^{((106.92 - (\text{desired dBu}) + [\text{ERP in dBk}]/20))}) \times 1000$
Field Strength (dBu) Equation: $\approx 106.92 - (20 \times (\text{LOG10}(\text{DistMeters}/1000))) + [\text{ERP in dBk}]$

Depression Angle Below Horizon	Antenna Relative Field	ERP in kW	ERP in dBk	Distance from Ant. to Interference Contour	Distance from Ant. to Artificial Plane	Field Strength in dBu @ Artificial Plane	Distance from Ant. to Ground Level	Field Strength in dBu @ Ground Level
0°	1.000	0.026	-15.85	232.27 m	infinite	---	---	---
-5°	0.997	0.026	-15.88	231.57 m	1388.32 m	88.19 dBu	1468.64 m	87.71 dBu
-10°	0.986	0.025	-15.97	229.01 m	696.81 m	94.08 dBu	737.12 m	93.60 dBu
-15°	0.969	0.024	-16.12	225.07 m	467.51 m	97.40 dBu	494.55 m	96.91 dBu
-20°	0.946	0.023	-16.33	219.72 m	353.78 m	99.61 dBu	374.25 m	99.12 dBu
-25°	0.916	0.022	-16.61	212.76 m	286.31 m	101.17 dBu	302.87 m	100.68 dBu
-30°	0.879	0.020	-16.97	204.16 m	242.00 m	102.27 dBu	256.00 m	101.78 dBu
-35°	0.837	0.018	-17.40	194.41 m	210.96 m	103.04 dBu	223.16 m	102.55 dBu
-40°	0.789	0.016	-17.91	183.26 m	186.24 m	103.56 dBu	199.12 m	103.06 dBu
-45°	0.736	0.014	-18.51	170.95 m	171.12 m	103.74 dBu	181.02 m	103.25 dBu
-50°	0.679	0.012	-19.21	157.71 m	157.95 m	103.74 dBu	167.09 m	103.25 dBu
-55°	0.616	0.010	-20.06	143.08 m	147.71 m	103.47 dBu	156.26 m	102.98 dBu
-60°	0.550	0.008	-21.04	127.75 m	139.72 m	102.97 dBu	147.80 m	102.48 dBu
-65°	0.480	0.006	-22.23	111.49 m	133.51 m	102.18 dBu	141.23 m	101.70 dBu
-70°	0.408	0.004	-23.64	94.76 m	128.77 m	101.09 dBu	136.21 m	100.60 dBu
-75°	0.333	0.003	-25.40	77.34 m	125.27 m	99.56 dBu	132.52 m	99.07 dBu
-80°	0.256	0.002	-27.69	59.46 m	122.87 m	97.45 dBu	129.97 m	96.96 dBu
-85°	0.178	0.001	-30.84	41.34 m	121.46 m	94.39 dBu	128.49 m	93.90 dBu
-90°	0.001	0.000	-75.85	0.23 m	121.00 m	49.41 dBu	128.00 m	48.93 dBu

✦ WCML-FM

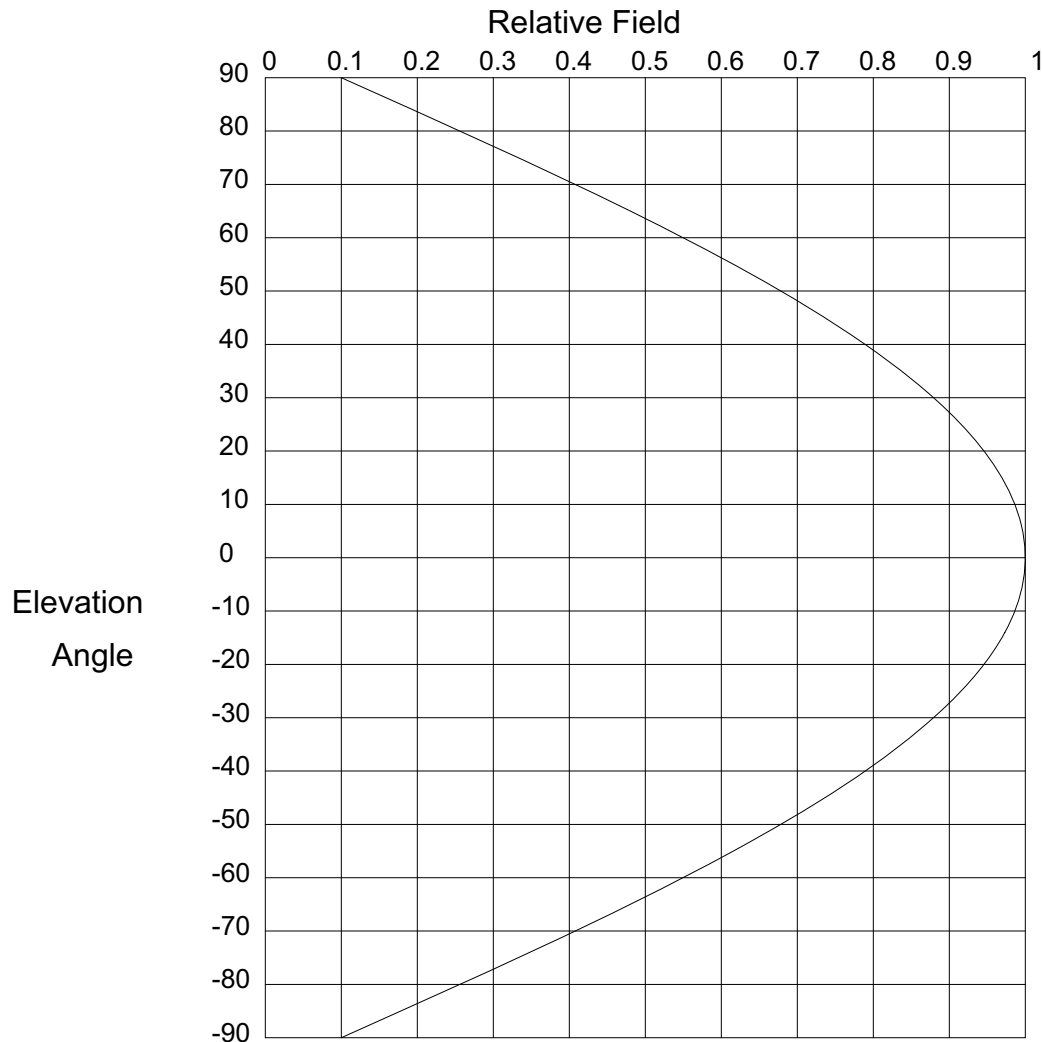
✦ WFDX(FM)



Scale 1:285,000

0 3 6 9 km

Exhibit 13.7 - Copy of Vertical Radiation Pattern from Antenna Manufacturer



Elevation Pattern

Scale: Linear

Units: Field, Relative

Systems With Reliability

CLIENT:
ANTENNA TYPE: FM1
FREQUENCY: 92.1 MHz
PATTERN POL.: Circular
DIRECTIVITY(Peak): 0.883/-0.539 dBd
DIRECTIVITY(Horiz): 0.883/-0.539 dBd

Date: 4/6/2010

Beam Tilt (Deg.) : 0
Null Fill(s)(%) : 0, 0, 0

Exhibit 13.7 - Copy of Vertical Radiation Pattern from Antenna Manufacturer



Relative Field Tabulation

Elev. Angle	Rel. Fld(dB)	Elev. Angle	Rel. Fld(dB)	Elev. Angle	Rel. Fld(dB)
90.0	.10 (-20)	52.0	.654 (-3.687)	14.0	.973 (-0.235)
89.0	.116 (-18.733)	51.0	.666 (-3.525)	13.0	.977 (-0.203)
88.0	.131 (-17.627)	50.0	.679 (-3.369)	12.0	.98 (-0.173)
87.0	.147 (-16.648)	49.0	.69 (-3.217)	11.0	.983 (-0.145)
86.0	.163 (-15.768)	48.0	.702 (-3.071)	10.0	.986 (-0.12)
85.0	.178 (-14.97)	47.0	.714 (-2.928)	9.8	.987 (-0.115)
84.0	.194 (-14.241)	46.0	.725 (-2.791)	9.6	.987 (-0.11)
83.0	.21 (-13.569)	45.0	.736 (-2.658)	9.4	.988 (-0.106)
82.0	.225 (-12.946)	44.0	.747 (-2.529)	9.2	.988 (-0.101)
81.0	.241 (-12.367)	43.0	.758 (-2.404)	9.0	.989 (-0.097)
80.0	.256 (-11.826)	42.0	.769 (-2.283)	8.8	.989 (-0.093)
79.0	.272 (-11.317)	41.0	.779 (-2.167)	8.6	.99 (-0.088)
78.0	.287 (-10.839)	40.0	.789 (-2.054)	8.4	.99 (-0.084)
77.0	.302 (-10.387)	39.0	.799 (-1.944)	8.2	.991 (-0.08)
76.0	.318 (-9.959)	38.0	.809 (-1.839)	8.0	.991 (-0.076)
75.0	.333 (-9.553)	37.0	.819 (-1.737)	7.8	.992 (-0.073)
74.0	.348 (-9.167)	36.0	.828 (-1.638)	7.6	.992 (-0.069)
73.0	.363 (-8.799)	35.0	.837 (-1.543)	7.4	.993 (-0.065)
72.0	.378 (-8.448)	34.0	.846 (-1.451)	7.2	.993 (-0.062)
71.0	.393 (-8.112)	33.0	.855 (-1.363)	7.0	.993 (-0.058)
70.0	.408 (-7.791)	32.0	.863 (-1.277)	6.8	.994 (-0.055)
69.0	.423 (-7.483)	31.0	.871 (-1.195)	6.6	.994 (-0.052)
68.0	.437 (-7.187)	30.0	.879 (-1.116)	6.4	.994 (-0.049)
67.0	.452 (-6.904)	29.0	.887 (-1.04)	6.2	.995 (-0.046)
66.0	.466 (-6.631)	28.0	.895 (-0.967)	6.0	.995 (-0.043)
65.0	.48 (-6.369)	27.0	.902 (-0.897)	5.8	.995 (-0.04)
64.0	.495 (-6.116)	26.0	.909 (-0.83)	5.6	.996 (-0.037)
63.0	.509 (-5.873)	25.0	.916 (-0.765)	5.4	.996 (-0.035)
62.0	.523 (-5.638)	24.0	.922 (-0.704)	5.2	.996 (-0.032)
61.0	.536 (-5.411)	23.0	.928 (-0.645)	5.0	.997 (-0.03)
60.0	.55 (-5.193)	22.0	.934 (-0.589)	4.8	.997 (-0.027)
59.0	.564 (-4.982)	21.0	.94 (-0.535)	4.6	.997 (-0.025)
58.0	.577 (-4.778)	20.0	.946 (-0.485)	4.4	.997 (-0.023)
57.0	.59 (-4.58)	19.0	.951 (-0.437)	4.2	.998 (-0.021)
56.0	.603 (-4.39)	18.0	.956 (-0.391)	4.0	.998 (-0.019)
55.0	.616 (-4.205)	17.0	.961 (-0.348)	3.8	.998 (-0.017)
54.0	.629 (-4.027)	16.0	.965 (-0.308)	3.6	.998 (-0.015)
53.0	.642 (-3.854)	15.0	.969 (-0.271)	3.4	.998 (-0.014)

Systems With Reliability

Page 1 of 3

CLIENT:

Date: 4/6/2010

ANTENNA TYPE: FM1

FREQUENCY: 92.1 MHz

PATTERN POL.: Circular

DIRECTIVITY(Peak): 0.883/-0.539 dBd

Beam Tilt (Deg.): 0

DIRECTIVITY(Horiz): 0.883/-0.539 dBd

Null Fill(s)(%): 0, 0, 0

Exhibit 13.7 - Copy of Vertical Radiation Pattern from Antenna Manufacturer



Relative Field Tabulation

Elev. Angle	Rel. Fld(dB)	Elev. Angle	Rel. Fld(dB)	Elev. Angle	Rel. Fld(dB)
3.2	.999 (-0.012)	-4.4	.997 (-0.023)	-12.0	.98 (-0.173)
3.0	.999 (-0.011)	-4.6	.997 (-0.025)	-12.2	.98 (-0.178)
2.8	.999 (-0.009)	-4.8	.997 (-0.027)	-12.4	.979 (-0.184)
2.6	.999 (-0.008)	-5.0	.997 (-0.03)	-12.6	.978 (-0.19)
2.4	.999 (-0.007)	-5.2	.996 (-0.032)	-12.8	.978 (-0.196)
2.2	.999 (-0.006)	-5.4	.996 (-0.035)	-13.0	.977 (-0.203)
2.0	.999 (-0.005)	-5.6	.996 (-0.037)	-13.2	.976 (-0.209)
1.8	1.00 (-0.004)	-5.8	.995 (-0.04)	-13.4	.975 (-0.215)
1.6	1.00 (-0.003)	-6.0	.995 (-0.043)	-13.6	.975 (-0.222)
1.4	1.00 (-0.002)	-6.2	.995 (-0.046)	-13.8	.974 (-0.229)
1.2	1.00 (-0.002)	-6.4	.994 (-0.049)	-14.0	.973 (-0.235)
1.0	1.00 (-0.001)	-6.6	.994 (-0.052)	-14.2	.973 (-0.242)
.8	1.00 (-0.001)	-6.8	.994 (-0.055)	-14.4	.972 (-0.249)
.6	1.00 (0)	-7.0	.993 (-0.058)	-14.6	.971 (-0.256)
.4	1.00 (0)	-7.2	.993 (-0.062)	-14.8	.97 (-0.263)
.2	1.00 (0)	-7.4	.993 (-0.065)	-15.0	.969 (-0.271)
.0	1.00 (0)	-7.6	.992 (-0.069)	-15.2	.969 (-0.278)
-.2	1.00 (0)	-7.8	.992 (-0.073)	-15.4	.968 (-0.285)
-.4	1.00 (0)	-8.0	.991 (-0.076)	-15.6	.967 (-0.293)
-.6	1.00 (0)	-8.2	.991 (-0.08)	-15.8	.966 (-0.3)
-.8	1.00 (-0.001)	-8.4	.99 (-0.084)	-16.0	.965 (-0.308)
-1.0	1.00 (-0.001)	-8.6	.99 (-0.088)	-16.2	.964 (-0.316)
-1.2	1.00 (-0.002)	-8.8	.989 (-0.093)	-16.4	.963 (-0.324)
-1.4	1.00 (-0.002)	-9.0	.989 (-0.097)	-16.6	.962 (-0.332)
-1.6	1.00 (-0.003)	-9.2	.988 (-0.101)	-16.8	.962 (-0.34)
-1.8	1.00 (-0.004)	-9.4	.988 (-0.106)	-17.0	.961 (-0.348)
-2.0	.999 (-0.005)	-9.6	.987 (-0.11)	-17.2	.96 (-0.357)
-2.2	.999 (-0.006)	-9.8	.987 (-0.115)	-17.4	.959 (-0.365)
-2.4	.999 (-0.007)	-10.0	.986 (-0.12)	-17.6	.958 (-0.374)
-2.6	.999 (-0.008)	-10.2	.986 (-0.124)	-17.8	.957 (-0.383)
-2.8	.999 (-0.009)	-10.4	.985 (-0.129)	-18.0	.956 (-0.391)
-3.0	.999 (-0.011)	-10.6	.985 (-0.134)	-18.2	.955 (-0.4)
-3.2	.999 (-0.012)	-10.8	.984 (-0.14)	-18.4	.954 (-0.409)
-3.4	.998 (-0.014)	-11.0	.983 (-0.145)	-18.6	.953 (-0.418)
-3.6	.998 (-0.015)	-11.2	.983 (-0.15)	-18.8	.952 (-0.427)
-3.8	.998 (-0.017)	-11.4	.982 (-0.156)	-19.0	.951 (-0.437)
-4.0	.998 (-0.019)	-11.6	.982 (-0.161)	-19.2	.95 (-0.446)
-4.2	.998 (-0.021)	-11.8	.981 (-0.167)	-19.4	.949 (-0.456)

Systems With Reliability

Page 2 of 3

CLIENT:

Date: 4/6/2010

ANTENNA TYPE: FM1

FREQUENCY: 92.1 MHz

PATTERN POL.: Circular

DIRECTIVITY(Peak): 0.883/-0.539 dBd

Beam Tilt (Deg.) : 0

DIRECTIVITY(Horiz): 0.883/-0.539 dBd

Null Fill(s)(%) : 0, 0, 0

Exhibit 13.7 - Copy of Vertical Radiation Pattern from Antenna Manufacturer



Relative Field Tabulation

Elev. Angle	Rel. Fld(dB)	Elev. Angle	Rel. Fld(dB)	Elev. Angle	Rel. Fld(dB)
-19.6	.948 (-0.465)	-27.2	.90 (-0.911)	-54.0	.629 (-4.027)
-19.8	.947 (-0.475)	-27.4	.899 (-0.924)	-55.0	.616 (-4.205)
-20.0	.946 (-0.485)	-27.6	.898 (-0.939)	-56.0	.603 (-4.39)
-20.2	.945 (-0.495)	-27.8	.896 (-0.953)	-57.0	.59 (-4.58)
-20.4	.944 (-0.505)	-28.0	.895 (-0.967)	-58.0	.577 (-4.778)
-20.6	.942 (-0.515)	-28.2	.893 (-0.981)	-59.0	.564 (-4.982)
-20.8	.941 (-0.525)	-28.4	.892 (-0.996)	-60.0	.55 (-5.193)
-21.0	.94 (-0.535)	-28.6	.89 (-1.01)	-61.0	.536 (-5.411)
-21.2	.939 (-0.546)	-28.8	.889 (-1.025)	-62.0	.523 (-5.638)
-21.4	.938 (-0.556)	-29.0	.887 (-1.04)	-63.0	.509 (-5.873)
-21.6	.937 (-0.567)	-29.2	.886 (-1.055)	-64.0	.495 (-6.116)
-21.8	.936 (-0.578)	-29.4	.884 (-1.07)	-65.0	.48 (-6.369)
-22.0	.934 (-0.589)	-29.6	.883 (-1.085)	-66.0	.466 (-6.631)
-22.2	.933 (-0.6)	-29.8	.881 (-1.101)	-67.0	.452 (-6.904)
-22.4	.932 (-0.611)	-30.0	.879 (-1.116)	-68.0	.437 (-7.187)
-22.6	.931 (-0.622)	-31.0	.871 (-1.195)	-69.0	.423 (-7.483)
-22.8	.93 (-0.633)	-32.0	.863 (-1.277)	-70.0	.408 (-7.791)
-23.0	.928 (-0.645)	-33.0	.855 (-1.363)	-71.0	.393 (-8.112)
-23.2	.927 (-0.656)	-34.0	.846 (-1.451)	-72.0	.378 (-8.448)
-23.4	.926 (-0.668)	-35.0	.837 (-1.543)	-73.0	.363 (-8.799)
-23.6	.925 (-0.68)	-36.0	.828 (-1.638)	-74.0	.348 (-9.167)
-23.8	.923 (-0.692)	-37.0	.819 (-1.737)	-75.0	.333 (-9.553)
-24.0	.922 (-0.704)	-38.0	.809 (-1.839)	-76.0	.318 (-9.959)
-24.2	.921 (-0.716)	-39.0	.799 (-1.944)	-77.0	.302 (-10.387)
-24.4	.92 (-0.728)	-40.0	.789 (-2.054)	-78.0	.287 (-10.839)
-24.6	.918 (-0.74)	-41.0	.779 (-2.167)	-79.0	.272 (-11.317)
-24.8	.917 (-0.753)	-42.0	.769 (-2.283)	-80.0	.256 (-11.826)
-25.0	.916 (-0.765)	-43.0	.758 (-2.404)	-81.0	.241 (-12.367)
-25.2	.914 (-0.778)	-44.0	.747 (-2.529)	-82.0	.225 (-12.946)
-25.4	.913 (-0.791)	-45.0	.736 (-2.658)	-83.0	.21 (-13.569)
-25.6	.912 (-0.803)	-46.0	.725 (-2.791)	-84.0	.194 (-14.241)
-25.8	.91 (-0.816)	-47.0	.714 (-2.928)	-85.0	.178 (-14.97)
-26.0	.909 (-0.83)	-48.0	.702 (-3.071)	-86.0	.163 (-15.768)
-26.2	.908 (-0.843)	-49.0	.69 (-3.217)	-87.0	.147 (-16.648)
-26.4	.906 (-0.856)	-50.0	.679 (-3.369)	-88.0	.131 (-17.627)
-26.6	.905 (-0.87)	-51.0	.666 (-3.525)	-89.0	.116 (-18.733)
-26.8	.903 (-0.883)	-52.0	.654 (-3.687)	-90.0	.10 (-20)
-27.0	.902 (-0.897)	-53.0	.642 (-3.854)	90.0	.00 (-50)

Systems With Reliability

Page 3 of 3

CLIENT:

Date: 4/6/2010

ANTENNA TYPE: FM1

FREQUENCY: 92.1 MHz

PATTERN POL.: Circular

DIRECTIVITY(Peak): 0.883/-0.539 dBd

Beam Tilt (Deg.) : 0

DIRECTIVITY(Horiz): 0.883/-0.539 dBd

Null Fill(s)(%) : 0, 0, 0